



**PHILIPS**

Party Speaker

3000 Series

TAX3308

# Quick Start Guide

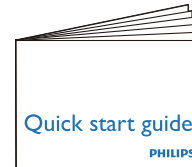
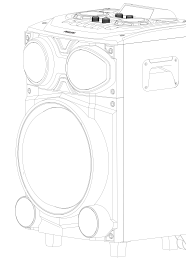


Register your product and get support at  
[www.philips.com/support](http://www.philips.com/support)



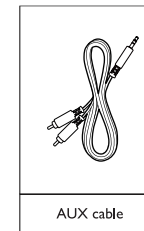
- EN** Before using your product, read all accompanying safety information
- BG** Преди да използвате продукта, прочетете всичката придружаваща информация за безопасност
- BS** Prije upotrebljavanja proizvoda, pročitajte sve prateće sigurnosne informacije
- CS** Před použitím výrobku si přečtěte všechny doprovodné informace týkající se bezpečnosti
- DA** Før du bruger produktet, skal du læse alle ledsagende sikkerhedsoplysninger
- DE** Lesen Sie vor der Verwendung Ihres Geräts alle begleitenden Sicherheitsinformationen
- EL** Πριν χρησιμοποιήσετε το προϊόν σας, διαβάστε όλες τις συνοδευτικές πληροφορίες ασφαλείας
- ES** Antes de usar el producto, lee toda la información sobre seguridad que lo acompaña
- ET** Enne selle toote kasutamist lugege läbi kogu sellega kaasasolev teave
- FI** Ennen tuotteen käyttöä, lue kaikki liitettyt turvallisuusohjeet
- FR** Avant d'utiliser votre produit, lisez toutes les informations de sécurité qui l'accompagnent
- HR** Prije upotrebe proizvoda pročitajte sve popratne sigurnosne informacije
- HU** A termék használatá előtt olvassa el az összes vonatkozó biztonsággal kapcsolatos információt
- IT** Prima di utilizzare il prodotto, leggere tutte le informazioni sulla sicurezza allegate
- KK** Өнімді пайдалану алдында бүкіл ілеске қауіпсіздік туралы ақпаратты оқып шығыңыз
- LT** Prieš naudodami savo gaminį, perskaitykite visą pridėtą saugos informaciją
- LV** Pirms izstrādājuma lietošanas izlasiet visu pievienoto drošības informāciju
- ME** Prije korišćenja proizvoda, pročitajte sve prateće bezbjednosne informacije
- MK** Пред да го користите производот, прочитайте ги сите придружни безбедносни информации

- NL** Lees alle bijbehorende veiligheidsinformatie voordat u het product gebruikt
- NO** Før du bruker produktet, må du lese all medfølgende sikkerhetsinformasjon
- PL** Przed rozpoczęciem użytkowania produktu należy zapoznać się z wszystkimi załączonymi informacjami dotyczącymi bezpieczeństwa
- PT** Antes de utilizar o seu produto, leia todas as informações de segurança que o acompanham
- RO** Înainte de a utiliza acest produs, citiți toate informațiile de siguranță însoțitoare
- RU** Перед использованием вашего продукта прочитайте всю сопроводительную информацию по безопасности
- SK** Pred použitím výrobku si prečítajte všetky priložené bezpečnostné informácie
- SL** Pred uporabo tega izdelka preberite vso priloženo varnostno dokumentacijo
- SQ** Para se ta përdorni produktin, lexoni të gjitha informacionet e dhëna për sigurinë
- SR** Pre korišćenja proizvoda, pročitajte sve prateće bezbednosne informacije
- SV** Läs all bifogad säkerhetsinformation innan du använder produkten
- TR** Ürününüzü kullanmadan önce biriktiret olan tüm güvenlik bilgilerini okuyun.
- UK** Перед використанням пристрою прочитайте всю інформацію з техніки безпеки, що додається
- ID** Sebelum menggunakan produk, baca semua informasi keamanan
- HI** उपरने उत्पाद का उपयोग करने से पहले, सुरक्षा संबंधी सभी जानकारी पढ़ें
- TH** ก่อนใช้ผลิตภัณฑ์ของงอกนอ่านข้อมูลด้านความปลอดภัยที่แนบมาพร้อมทั้งหมด
- MS** Sebelum menggunakan produk anda, baca semua maklumat keselamatan yang disertakan
- AR** قبل استخدام المنتج، اقرأ معلومات السلامة المرفقة بالكامل

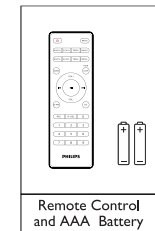


Brazil only

TAX3308/78



AUX cable



Remote Control and AAA Battery

(Power cord vary by regions)



# 1



### AC power

1

2

- Red light Charging battery
- Green light Full charged

Long press

Short press

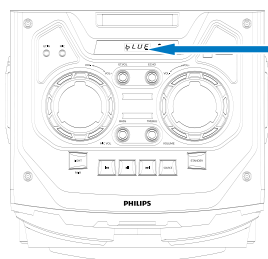
### Battery power

Long press

Short press



2



Battery Symbol



Battery symbol blinked

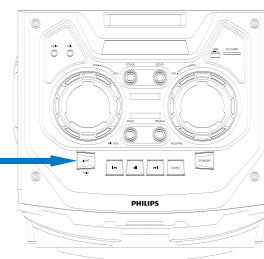


Prompt sound

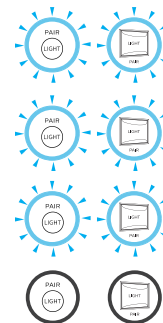
3



Short press



Short press



Light mode 1

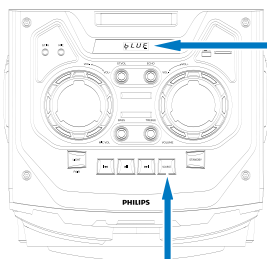
Light mode 2

Light mode 3

Light off



4

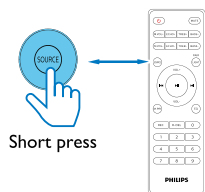


Bluetooth mode

1

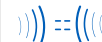
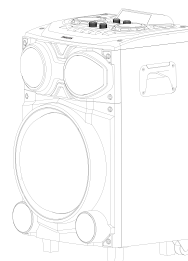
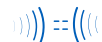
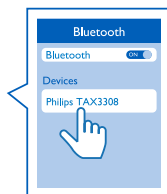


Short press



Short press

2



≤ 10 m  
(≤ 32.8 ft.)

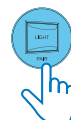
3



4



Long press



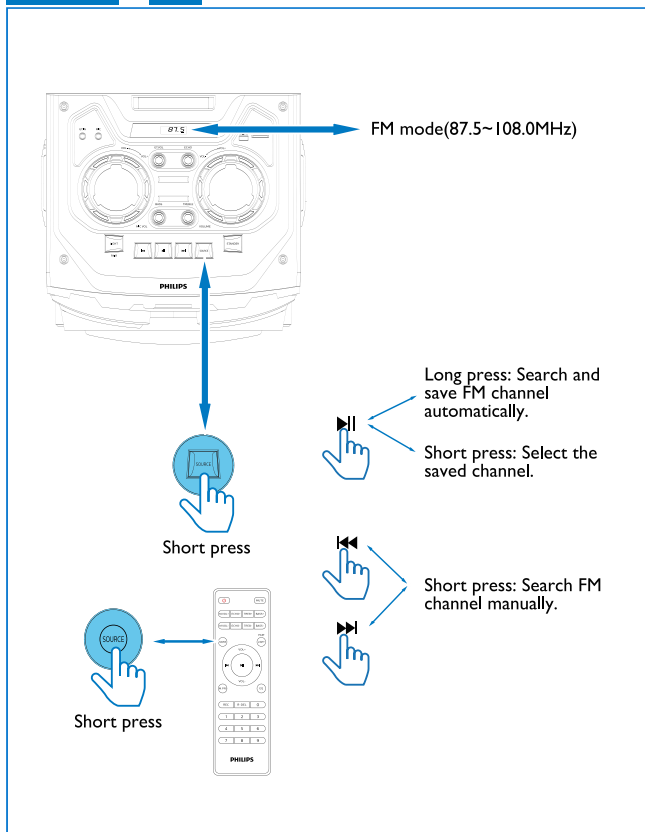
Long press



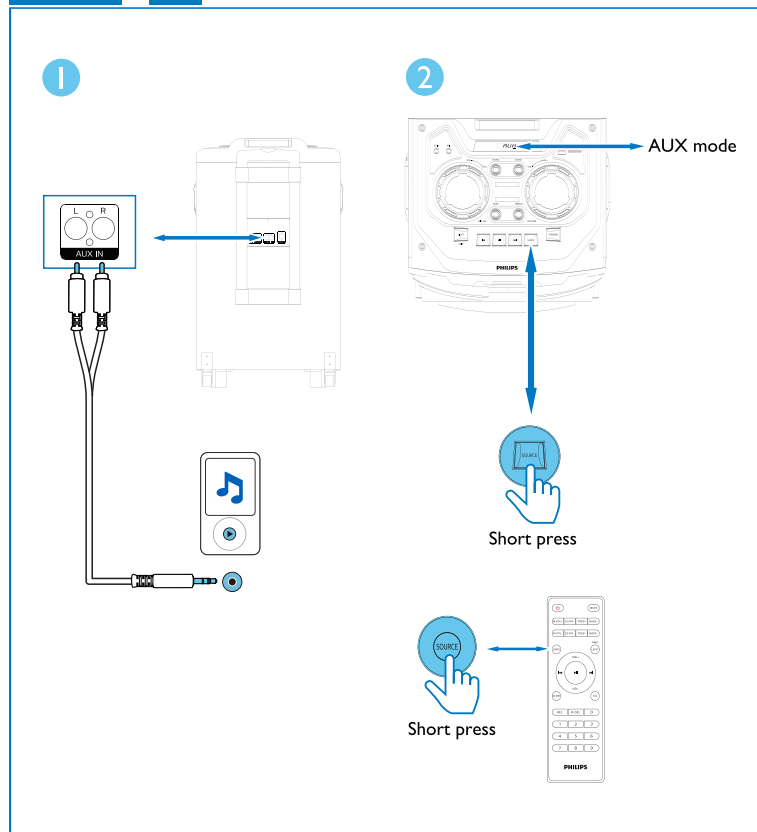


5

FM

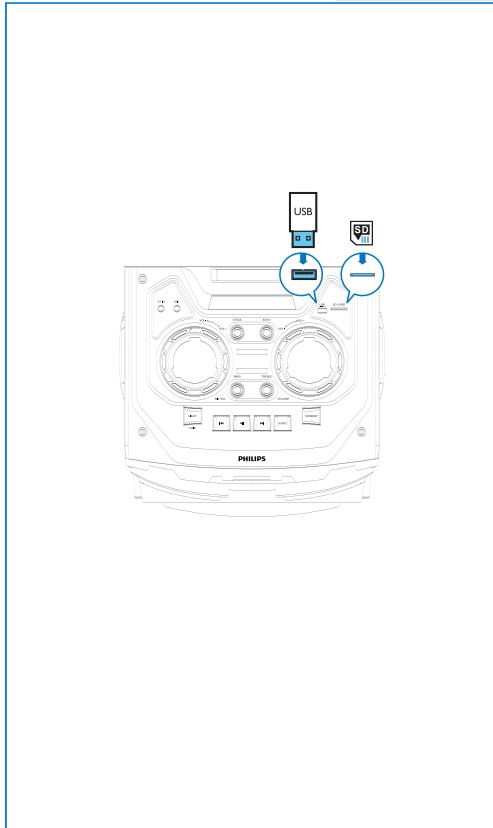


6

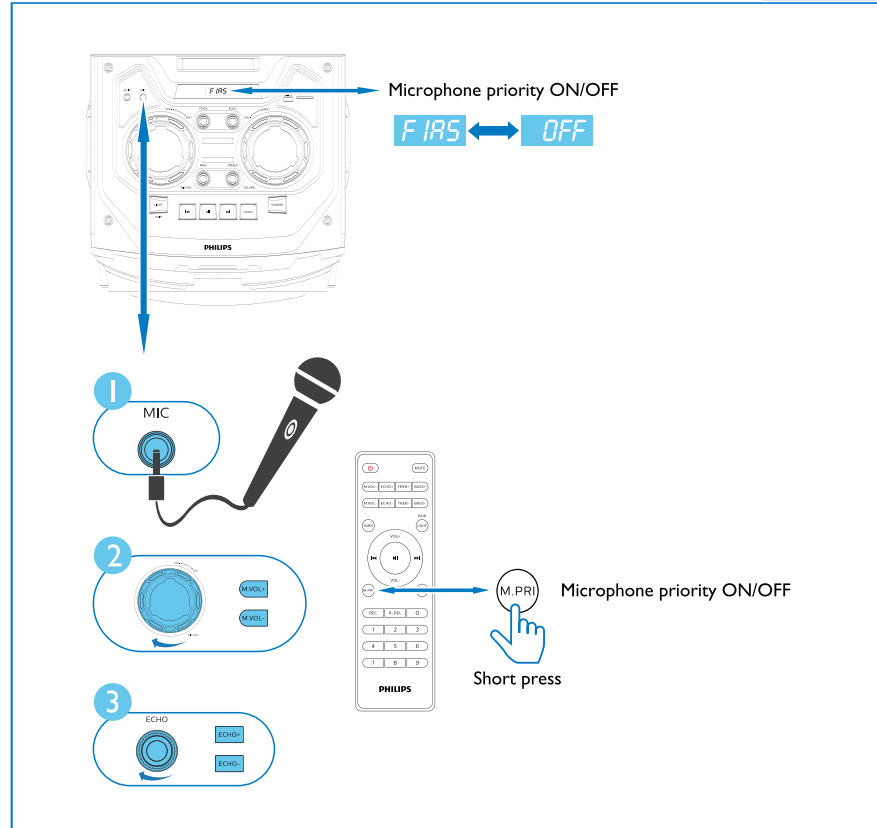




# 7

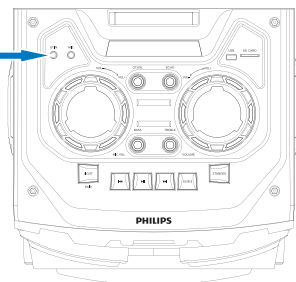
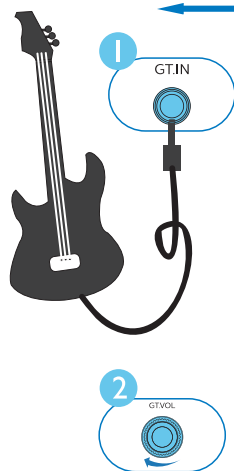


# 8



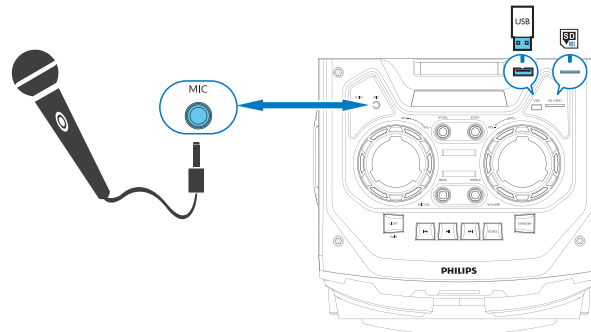






# 9



# 10

Record



-  Short press: Start record the microphone audio to USB or SD device.
-  Long press: Play the record content. Return to the current source when playing the record content.
-  Short press: Stop the recording and return to the current source.
-  Short press: When playing the record content, press to delete the record content.







- EN** For more information about using this product, visit [www.philips.com/support](http://www.philips.com/support)
- BG** За повече информация относно използването на този продукт посетете [www.philips.com/support](http://www.philips.com/support)
- BS** Za više informacija o upotrebi ovog proizvoda posjetite [www.philips.com/support](http://www.philips.com/support)
- CS** Další informace o použití tohoto výrobku naleznete na webu [www.philips.com/support](http://www.philips.com/support)
- DA** For mere information om brugen af dette produkt henvises til [www.philips.com/support](http://www.philips.com/support)
- DE** Weitere Informationen zur Verwendung dieses Geräts finden Sie unter: [www.philips.com/support](http://www.philips.com/support)
- EL** Για περισσότερες πληροφορίες σχετικά με τη χρήση αυτού του προϊόντος, επισκεφθείτε τη σελίδα [www.philips.com/support](http://www.philips.com/support)
- ES** Para obtener más información sobre cómo se utiliza este producto, visita [www.philips.com/support](http://www.philips.com/support)
- ET** Lisateabeks selle toote kasutamise kohta külastage [www.philips.com/support](http://www.philips.com/support)
- FI** Lisätietoa tämän tuotteen käytöstä, ks. [www.philips.com/support](http://www.philips.com/support)
- FR** Pour plus d'informations sur l'utilisation de ce produit, visitez [www.philips.com/support](http://www.philips.com/support)
- HR** Za više informacija o korišćenju ovog proizvoda posjetite [www.philips.com/support](http://www.philips.com/support)



The Bluetooth® word mark and logos are registered trademarks owned by Bluetooth SIG, Inc.

- HU** A termékkel kapcsolatos további információkért látogasson el az alábbi weboldadra: [www.philips.com/support](http://www.philips.com/support)
- IT** Per ulteriori informazioni sull'utilizzo di questo prodotto, visitare [www.philips.com/support](http://www.philips.com/support)
- KK** Осы өнімді пайдалану туралы қосымша ақпарат алу үшін мына бетке кіріңіз: [www.philips.com/support](http://www.philips.com/support)
- LT** Dėl išsamesnės informacijos, kaip naudotis šiuo gaminiu, apsilankykite [www.philips.com/support](http://www.philips.com/support)
- LV** Papildu informāciju par šī izstrādājuma izmantošanu varat iegūt tīmekļa vietnē [www.philips.com/support](http://www.philips.com/support)
- ME** Za više informacija o korišćenju ovog proizvoda posjetite [www.philips.com/support](http://www.philips.com/support)
- MK** Za повеќе информации за користењето на овој производ, посетете [www.philips.com/support](http://www.philips.com/support)
- NL** Ga voor meer informatie over het gebruik van dit product naar [www.philips.com/support](http://www.philips.com/support)
- NO** Du finner mer informasjon om hvordan du bruker dette produktet på [www.philips.com/support](http://www.philips.com/support)
- PL** Aby uzyskać więcej informacji na temat korzystania z tego produktu, odwiedź stronę [www.philips.com/support](http://www.philips.com/support)
- PT** Para obter mais informações sobre a utilização deste produto, visite [www.philips.com/support](http://www.philips.com/support)
- RO** Pentru mai multe informații privind utilizarea acestui produs, accesați [www.philips.com/support](http://www.philips.com/support)
- RU** Для получения дополнительной информации об использовании этого продукта, см. [www.philips.com/support](http://www.philips.com/support)

- SK** Pre ďalšie informácie o používaní tohto výrobku navštívte [www.philips.com/support](http://www.philips.com/support)
- SL** Več informacij o uporabi tega izdelka najdete na naslovu [www.philips.com/support](http://www.philips.com/support)
- SQ** Për më shumë informacion rreth përdorimit të këtij produkti, vizitoni [www.philips.com/support](http://www.philips.com/support)
- SR** Za više informacija o korišćenju ovog proizvoda posetite [www.philips.com/support](http://www.philips.com/support)
- SV** För mer information om hur du använder den här produkten, gå till [www.philips.com/support](http://www.philips.com/support)
- TR** Bu ünitenin kullanımı hakkında daha fazla bilgi için [www.philips.com/support](http://www.philips.com/support) ziyaret edin
- UK** Докладнішу інформацію про цей виріб шукайте на [www.philips.com/support](http://www.philips.com/support)
- ID** Untuk informasi selengkapnya tentang penggunaan produk, kunjungi <http://www.philips.co.id/id/c-m/bantuan-konsumen>
- HI** इस उत्पाद का उपयोग करने के बारे में अधिक जानकारी के लिए, [www.philips.com/support](http://www.philips.com/support) पर जाएं
- TH** สำหรับข้อมูลเพิ่มเติมเกี่ยวกับการใช้ผลิตภัณฑ์นี้ เยี่ยมชมได้ที่ [www.philips.com/support](http://www.philips.com/support)
- MS** Untuk maklumat lebih lanjut tentang cara menggunakan produk ini, sila layari [www.philips.com/support](http://www.philips.com/support)
- AR** لمزيد من المعلومات عن استخدام هذا المنتج، يرجى زيارة الرابط التالي [www.philips.com/support](http://www.philips.com/support)



[www.philips.com/support](http://www.philips.com/support)



Modelo: TAX3308



18949-23-12451

Para maiores informações, consulte a site da ANATEL: [www.anatel.gov.br](http://www.anatel.gov.br)  
Este equipamento não tem direito à proteção contra interferência prejudicial  
e não pode causar interferência em sistemas devidamente autorizados.

Specifications are subject to change without notice. Please visit  
[www.Philips.com/support](http://www.Philips.com/support) for the latest updates and documents.

Philips and the Philips Shield Emblem are registered trademarks of Koninklijke  
Philips N.V. and are used under license.

This product has been manufactured by and is sold under the responsibility of  
MMD Hong Kong Holding Limited or one of its affiliates, and MMD Hong Kong  
Holding Limited is the warrantor in relation to this product.

