

Register your product and get support at

www.philips.com/support

D120



Short user manual

PHILIPS

Important safety instructions



Warning

- The Electrical network is classified as hazardous. The only way to power down the charger is to unplug the power supply from the electrical outlet. Ensure that the electrical outlet is always easily accessible.
- Refer to safety information before using the product.
- This product complies with European R&TTE directive 1999/5/EC.
- Use only the power supply listed in the user instructions.
- Use only the batteries listed in the user instructions.
- Do not allow the product to come into contact with liquids.
- Risk of explosion if battery is replaced by an incorrect type.
- Dispose of used batteries according to the instructions.
- When the handset rings or when the handsfree is activated, keep the handset away from your ear to avoid hearing damage.

1 Overview

In call

- MENU OK** Enter the option menu.
- REDIAL C** Access the redial list.
- ▲▼** Adjust the volume.
- ☎** End calls.
- #** Enter a pause (press and hold).
- R** Recall (network dependent).
- 🔇** Mute/unmute the microphone.

In menu

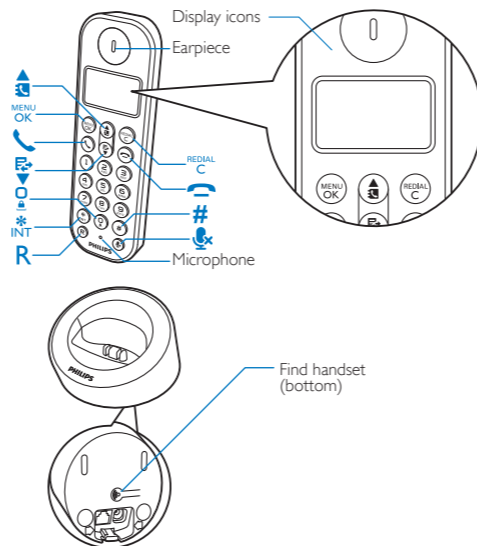
- MENU OK** Confirm / Select / Enter the option menu.
- REDIAL C** Cancel
- ▲▼** Up / down
- ☎** Exit menu.

Standby

- MENU OK** Access the main menu.
- REDIAL C** Access the redial list.
- ☎** Phonebook
- 📞** Call log
- ☎** Make and receive calls.
- ☎** Switch the handset on or off (press and hold).
- *INT** Make intercom call (press and hold).
- 🔒** Lock/unlock the keypad (press and hold).

In text input

- REDIAL C** Delete text.
- ⏏** Enter a space.

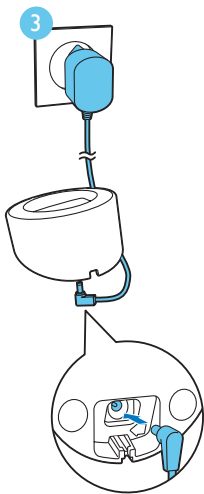
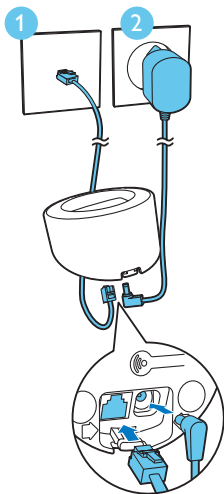


Display icons

- 📶** The number of bars indicates the connection status between the handset and base station. The more bars are shown, the better the signal strength is.
- ☎*** It remains steadily on when browsing incoming calls in the call log.
- ☎** It indicates an outgoing call in the redial list.
- ☎*** It flashes when there is a new missed call or when browsing new missed calls. It remains steadily on when browsing the missed calls in call log that are already read.

- ☎** It flashes when receiving incoming call. It remains steadily on during a call.
- 🔇** The ringer is off.
- ✉** Voice messages indicator: flashes for new messages, is steady for reviewed messages. * This is network dependent.
- ▲▼** It displays when you scroll up/down a list or increase and decrease the volume.
- ▶** There are more digits on the right. Press **REDIAL C** to read.

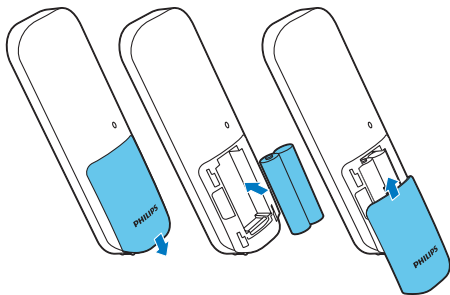
2 Connect



Multi-handset version
only.

3 Get started

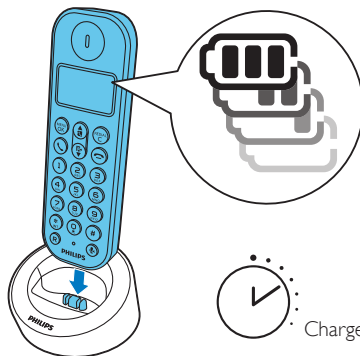
Insert batteries



Configure your phone

- 1 When using your phone for the first time, you see a welcome message (country dependent).
- 2 Set the country and language if prompted.
- 3 Set the date and time.
 - If the time is in 12-hour format, press / to select **[AM]** or **[PM]** (country dependent).

Charge your phone



> 70%



70% - 40%



40% - 10%



< 10%

Flashing: low battery

Scrolling: charging in progress

4 Enjoy

Phonebook

Add record

- 1 Press .
- 2 Select **[PHONEBOOK]** > **[ADD NEW]**.
- 3 Follow on-screen instructions.

Call from the phonebook

- 1 Press .
- 2 Select a record and press .

Call log

Call from the call log

- 1 Press .
- 2 Select a record and press .

View record

Press > > **[VIEW]**.

Save record

- 1 Press > > **[SAVE NUMBER]**.
- 2 Follow on-screen instructions.

Delete record

- 1 Press > > **[DELETE]**.
- 2 Follow on-screen instructions.

Redial list

Call from the redial list

- 1 Press .
- 2 Select a record and press .

Save record

- 1 Press > > **[SAVE NUMBER]**.
- 2 Follow on-screen instructions.

Delete record

- 1 Press > > **[DELETE]**.
- 2 Follow on-screen instructions.

Register additional handsets

You can register additional handsets to the base station.

- 1 Press and hold on the base station for 5 seconds.
- 2 Press .
- 3 Select **[SERVICES]** > **[REGISTER]**, then press to confirm.
- 4 Enter the system PIN/passcode (0000).
- 5 Press to confirm the PIN/passcode.
↳ Registration is complete in less than 2 minutes.

Restore default settings

You can reset your phone settings to the original factory settings.

- 1 Press .
- 2 Select **[SERVICES]** > **[RESET]**, then press to confirm.
- 3 Follow on-screen instructions.



Note

- You may recall the original PIN/passcode by following this procedure.



Technical data

Battery

- Philips: 2 x AAA NiMH 1.2 V Rechargeable 300 mAh batteries

Use only the supplied batteries.

Adapter

Base and charger:

Tenpao: S003GB0600050

Input: 100-240 V~ 50/60 Hz 150 mA

Output: 6 V 500 mA

Phonebook with 50 entries

Call log with 20 entries

Talk time: 10 hours

Standby time: 180 hours



Note

- You can install a DSL (digital subscriber line) filter to prevent noise and caller ID problems caused by the DSL interference.
- You can find the Declaration of Conformity on www.p4c.philips.com.

? Frequently asked questions

No signal bar is displayed on the screen.

- The handset is out of range. Move it closer to the base station.
- If the handset displays **[UNREGISTERED]**, register your handset. (See the section on “Register additional handsets”).

If I fail to pair (register) the additional handsets to the base station, what do I do?

Your base memory is full. Access ^{MENU} **[SERVICES]** > **[UNREGISTER]** to unregister the unused handsets and try again.

My handset is in searching status, what do I do?

- Make sure that the base station has power supply.
- Register the handset to the base station.
- Move the handset closer to the base station.

I cannot change the settings of my voice mail, what do I do?

The voice mail service is managed by your service provider but not the phone itself. Contact your service provider to change the settings.

No display

- Make sure the batteries are charged.
- Make sure there are power and phone connections.

The handset on the charger does not charge.

- Make sure the batteries are inserted correctly.
- Make sure the handset is placed properly on the charger. The battery icon animates when charging.
- Make sure the docking tone setting is turned on. When the handset is placed correctly on the charger, you can hear a docking tone.
- The charging contacts are dirty. Disconnect the power supply first and clean the contacts with a damp cloth.
- Batteries are defective. Purchase new ones with the same specifications.

Bad audio (crackles, echo, etc.)

- The handset is nearly out of range. Move it closer to the base station.
- The phone receives interference from the nearby electrical appliances. Move the base station away from them.
- The phone is at a location with thick walls. Move the base away from them.

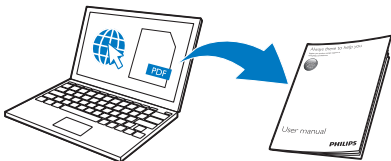
The handset does not ring.

Make sure the handset ringtone is turned on.

The caller ID does not display.

- The service is not activated. Check with your service provider.
- The caller's information is withheld or unavailable.

i



www.philips.com/support

To access the user instructions online, use the reference model number written on the product label at the bottom of the base station.



This symbol on a product means that the product is covered by European Directive 2012/19/EU.

2015 © Gibson Innovations Limited.

All rights reserved.

This product has been manufactured by, and is sold under the responsibility of Gibson Innovations Ltd., and Gibson Innovations Ltd. is the warrantor in relation to this product.

Philips and the Philips Shield Emblem are registered trademarks of Koninklijke Philips N.V. and are used under license from Koninklijke Philips N.V.

CE 0168



UMS_D120
63 90 90_EN_V2.0
WK15295