

3 Get started

! Caution

- Use of controls or adjustments or performance of procedures other than herein may result in hazardous radiation exposure or other unsafe operation.

Always follow the instructions in this chapter in sequence.

If you contact Philips, you will be asked for the model and serial number of this apparatus. The model number and serial number are on the back of the apparatus. Write the numbers here:

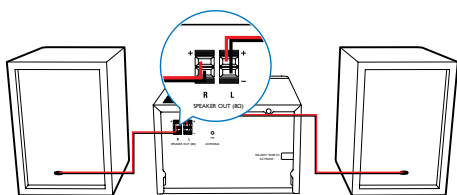
Model No. _____

Serial No. _____

Connect speakers

≡ Note

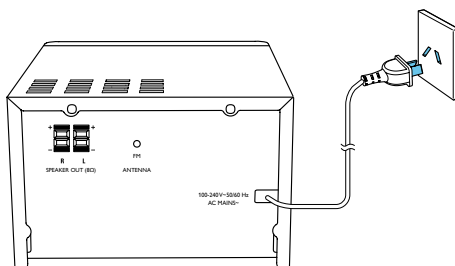
- For optimal sound, use the supplied speakers only.
- Connect only speakers with impedance that is the same or higher than the supplied speakers. Refer to the Specifications section of this manual.



Connect power

! Caution

- Risk of product damage! Ensure that the power supply voltage corresponds to the voltage printed on the back or the underside of the unit.
- Risk of electric shock! When you unplug the AC power cord, always pull the plug from the socket. Never pull the cord.
- Before you connect the AC power cord, ensure that you have completed all other connections.



Demonstrate the features

In the standby mode, you can demonstrate features by pressing ■.

- ↳ The features are displayed one by one across the display panel.
- To turn off the demonstration, press ■ again.

Prepare the remote control

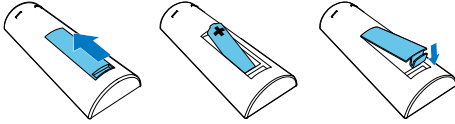
! Caution

- Risk of explosion! Keep batteries away from heat, sunshine or fire. Never discard batteries in fire.
- Risk of decreased battery life! Never mix different brands or types of batteries.
- Risk of product damage! When the remote control is not used for long periods, remove the batteries.

To insert the remote control battery:

- 1 Open the battery compartment.

- 2 Insert the supplied AAA battery with correct polarity (+/-) as indicated.
- 3 Close the battery compartment.



Set clock

- 1 In standby mode, press and hold **CLOCK** on the remote control for more than two seconds.
 - ↳ [24H] or [12H] hour format is displayed.
- 2 Press **◀◀** / **▶▶** to select [24H] or [12H] hour format, and then press **CLOCK**.
 - ↳ The hour digits are displayed and begin to blink.
- 3 Press **◀◀** / **▶▶** to set hour; and then press **CLOCK**.
 - ↳ The minute digits are displayed and begin to blink.
- 4 Repeat step 3 to set minute.

Note

- If no button is pressed in 90 seconds, the system exits clock setting mode automatically.

Tip

- You can view clock information in power-on mode by pressing **CLOCK**.

Turn on

Press **⏻**.

- ↳ The unit switches to the last selected source.

Switch to standby mode

Press **⏻** again to switch the unit to standby mode.

- ↳ The clock (if set) is displayed on the panel.

Switch to ECO standby mode:

Press and hold **⏻** for more than two seconds.

- ↳ The display panel is dimmed.

Note

- The unit switches to Eco Power Standby mode after 15 minutes in standby mode.

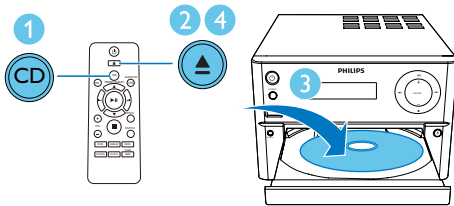
Switch between standby mode and ECO standby mode:

Press and hold **⏻** for more than two seconds.

4 Play

Play from disc

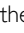
- 1 Press **CD** to select CD source.
- 2 Press **▲** to open the disc compartment.
- 3 Insert a disc with the printed side facing upward.
- 4 Press **▲** to close the disc compartment.
↳ Play starts automatically. If not, press **▶||**.

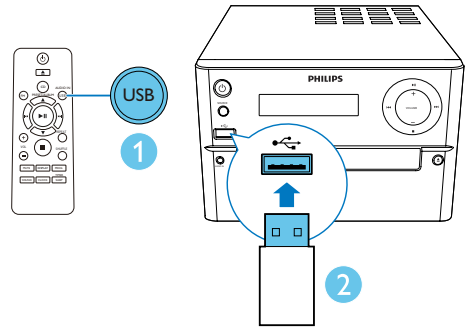


Play from USB

Note

- Make sure that the USB device contains playable audio content.

- 1 Press **USB/AUDIO IN** repeatedly to select USB source.
- 2 Insert a USB device into the  socket.
↳ Play starts automatically. If not, press **▶||**.



Control play

▲ / ▼	Select a folder.
◀◀ / ▶▶	Select an audio file.
▶ 	Pause or resume play.
■	Stop play.
REPEAT (repeat)	Play a track or all tracks repeatedly.
SHUFFLE (shuffle)	Play tracks randomly.
VOL +/-	Increase or decrease the volume.
MUTE (mute)	Mute or restore sound.
SOUND (sound)	Enrich sound effect with DSC: balanced, clear, powerful, warm, and bright.
DISPLAY (display)	Adjust display brightness.

Skip to a track

For CD:

Press **◀◀ / ▶▶** to select another track.

For MP3 disc and USB:

- 1 Press **▲ / ▼** to select an album or a folder.
- 2 Press **◀◀ / ▶▶** to select a track or a file.

Program tracks

You can program a maximum of 20 tracks.

- 1 Press **PROG** to activate the program mode.
- 2 For MP3 tracks, press ▲ / ▼ to select an album.
- 3 Press ◀◀ / ▶▶ to select a track, and then press **PROG** to confirm.
- 4 Repeat steps 2 to 3 to program more tracks.
- 5 Press ▶|| to play the programmed tracks.
 - ↳ During play, [**PROG**] (program) is displayed.
 - To erase the program, in the stop position, press ■.

5 Listen to the radio

Tune to a radio station



Tip

- Position the antenna as far as possible from TV, VCR, or other radiation source.
- For optimal reception, fully extend and adjust the position of the antenna.

- 1 Press **FM** to select FM source.
- 2 Press and hold **◀◀ / ▶▶** for more than two seconds.
↳ The radio tunes to a station with strong reception automatically.

- 3 Repeat step 2 to tune to more stations.

To tune to a weak station:

Press **◀◀ / ▶▶** repeatedly until you find optimal reception.

Program radio stations automatically



Note

- You can program a maximum of 20 preset radio stations (FM).

In tuner mode, press and hold **PROG** for more than two seconds to activate automatic programming.

- ↳ All available stations are programmed in the order of waveband reception strength.
- ↳ The first programmed radio station is broadcast automatically.

Program radio stations manually

- 1 Tune to a radio station.
- 2 Press **PROG**, and then press **▲ / ▼** to select a number from 1–20.
- 3 Press **PROG** to confirm.
↳ The preset number and the frequency of the preset station are displayed.
- 4 Repeat steps 2-3 to program more stations.



Note

- To overwrite a programmed station, store another station in its place.

Select a preset radio station

In tuner mode, press **▲ / ▼** to select a preset number.

6 Other features

Set the alarm timer

This unit can be used as an alarm clock. You can select CD, FM, or USB as alarm source.

Note

- Make sure that you have set the clock correctly.

- 1 In standby mode, press and hold **SLEEP/TIMER** for more than two seconds.
↳ The hour digits are displayed and begin to blink.
- 2 Press **◀◀ / ▶▶** repeatedly to set hour, and then press **SLEEP/TIMER**.
↳ The minute digits are displayed and begin to blink.
- 3 Repeat step 2 to set minute, select a source (**CD**, **FM**, or **USB**), and adjust volume.

Note

- If no button is pressed in 90 seconds, the system exits timer setting mode automatically.

To activate or deactivate the alarm timer:
Press **SLEEP/TIMER** repeatedly to activate or deactivate the alarm.

- ↳ If timer is activated,  is displayed.

Tip

- If CD/USB source is selected, but no disc is placed or no USB connected, the system switches to the tuner source automatically.

Set the sleep timer

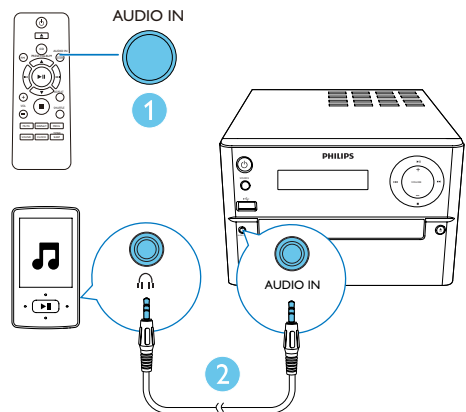
To set the sleep timer; in turn on mode, press **SLEEP/TIMER** repeatedly to select a set period of time (in minutes).

- ↳ When sleep timer is activated, **zZ** is displayed. Otherwise, **zZ** disappears.

Listen to an external device

You can listen to an external device through this unit with an MP3 link cable (not supplied).

- 1 Press **USB/AUDIO IN** repeatedly to select **AUDIO IN** source.
- 2 Connect an MP3 link cable (not supplied) between:
 - **AUDIO IN** jack (3.5 mm) on the unit,
 - and the headphone jack on an external device.
- 3 Start to play the device (see the device user manual).



7 Product information



Note

- Product information is subject to change without prior notice.

Specifications

Amplifier

Maximum Output Power	60 W RMS
Frequency Response	60 Hz - 16 kHz; ±3 dB
Signal to Noise Ratio	≥70 dB
Total Harmonic Distortion	<1%
Aux Input	600 mV RMS

Speakers

Speaker Impedance	8 ohm
Speaker Driver	3.5" + 20 mm
Sensitivity	>84 dB/m/W

Tuner (FM)

Tuning Range	87.5-108 MHz
Tuning grid	50 KHz
Sensitivity	
- Mono, 26dB S/N Ratio	<22 dBu
- Stereo, 46dB S/N Ratio	<45 dBu
Search Selectivity	<30 dBu
Total Harmonic Distortion	<3%
Signal to Noise Ratio	>45 dB

USB

USB Direct Version	2.0 full speed
USB 5 V Power	≤500 mA

Disc

Laser Type	Semiconductor
Disc Diameter	12 cm/8 cm
Support Disc	CD-DA, CD-R, CD-RW, MP3-CD
Audio DAC	24 Bits/44.1 kHz
Total Harmonic Distortion	<1% (1 kHz)
Frequency Response	60 Hz - 16 kHz; ±3 dB
S/N Ratio	>70 dBA

General information

AC power	100-240V, 50/60 Hz
Operation Power Consumption	100 W
Eco Standby Power Consumption	<0.5 W
Dimensions	
- Main Unit (W × H × D)	180 × 121 × 239 mm
- Speaker Box (W × H × D)	140 × 260 × 185 mm
Weight	
- Main Unit	1.6 kg
- Speaker Box	2 × 2.1 kg

USB playability information

Compatible USB devices:

- USB flash memory (USB2.0 or USB1.1)
- USB flash players (USB2.0 or USB1.1)
- memory cards (requires an additional card reader to work with this unit)

Supported formats:

- USB or memory file format: FAT12, FAT16, FAT32 (sector size: 512 bytes)
- MP3 bit rate (data rate): 32-320 Kbps and variable bit rate
- Directory nesting up to a maximum of 8 levels
- Number of albums/ folders: maximum 99
- Number of tracks/titles: maximum 999
- ID3 tag v2.0 or later
- File name in Unicode UTF8 (maximum length: 32 bytes)

Unsupported formats:

- Empty albums: an empty album is an album that does not contain MP3/WMA files, and will not be shown in the display.
- Unsupported file formats are skipped. For example, word documents (.doc) or MP3 files with extension .dlf are ignored and not played.
- WMA, AAC, WAV, PCM audio files
- DRM protected WMA files (.wav, .m4a, .m4p, .mp4, .aac)
- WMA files in Lossless format

Supported MP3 disc formats

- ISO9660, Joliet
- Maximum title number: 128 (depending on file name length)
- Maximum album number: 99
- Supported sampling frequencies: 32 kHz, 44.1 kHz, 48 kHz
- Supported Bit-rates: 32~256 (kbps), variable bit rates

