

Always there to help you  
Register your product and get support at  
[www.philips.com/support](http://www.philips.com/support)



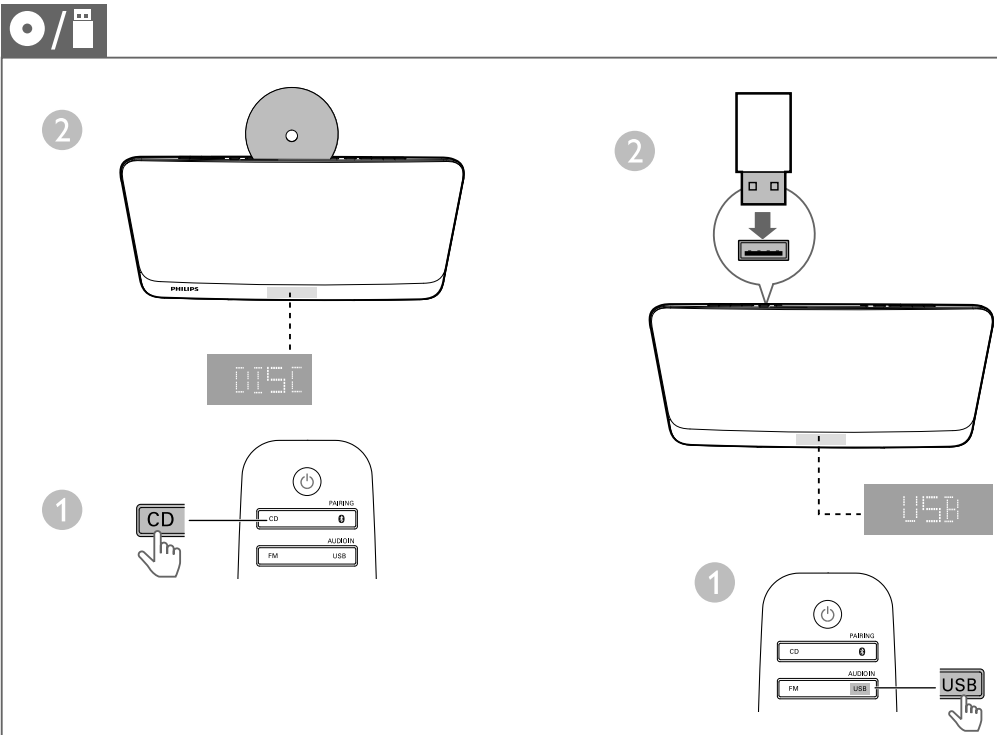
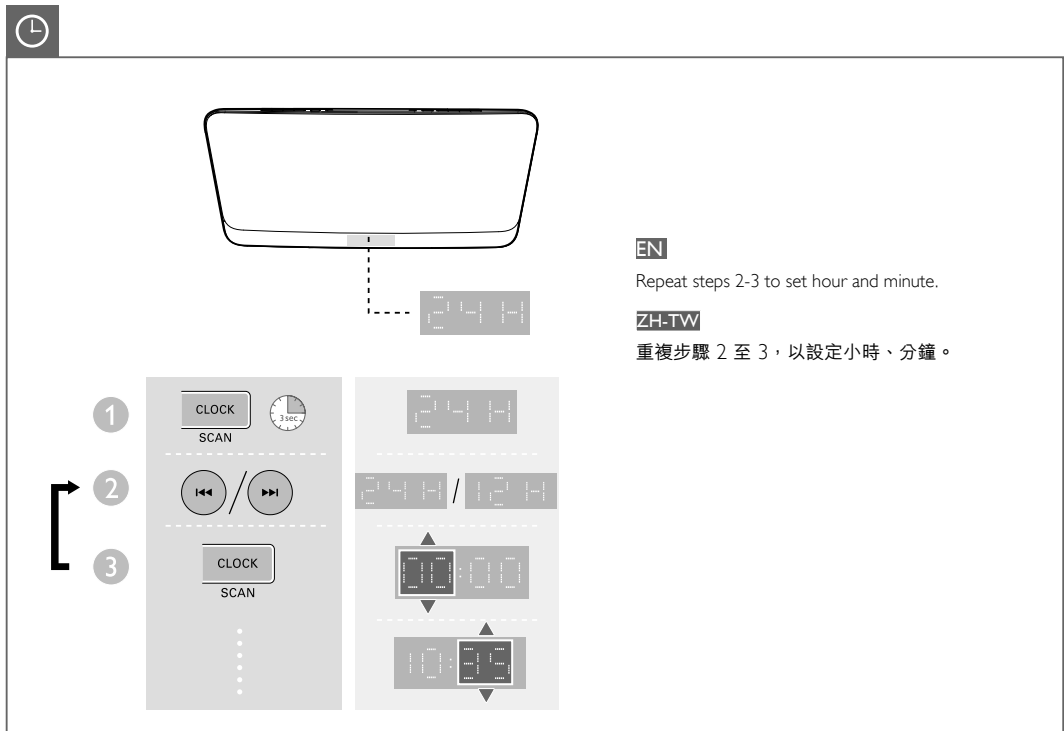
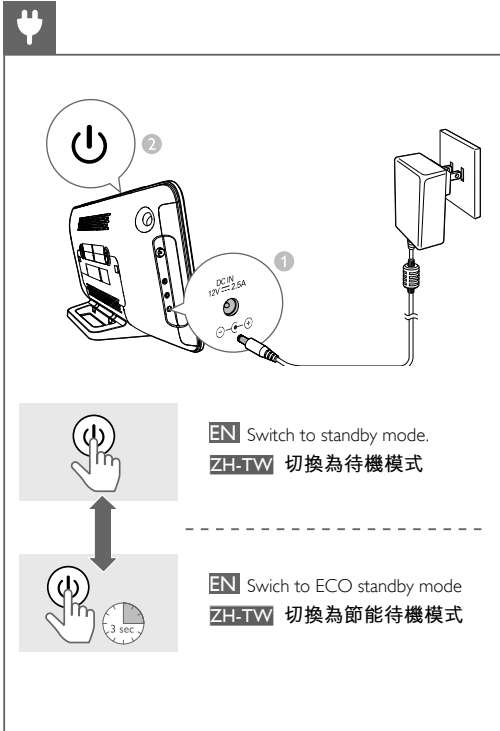
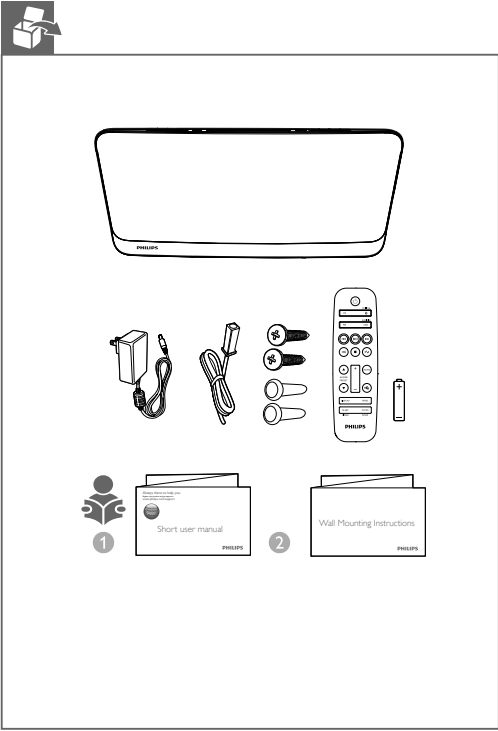
EN Short User Manual    ZH-TW 短版使用手冊

BTM2460

PHILIPS

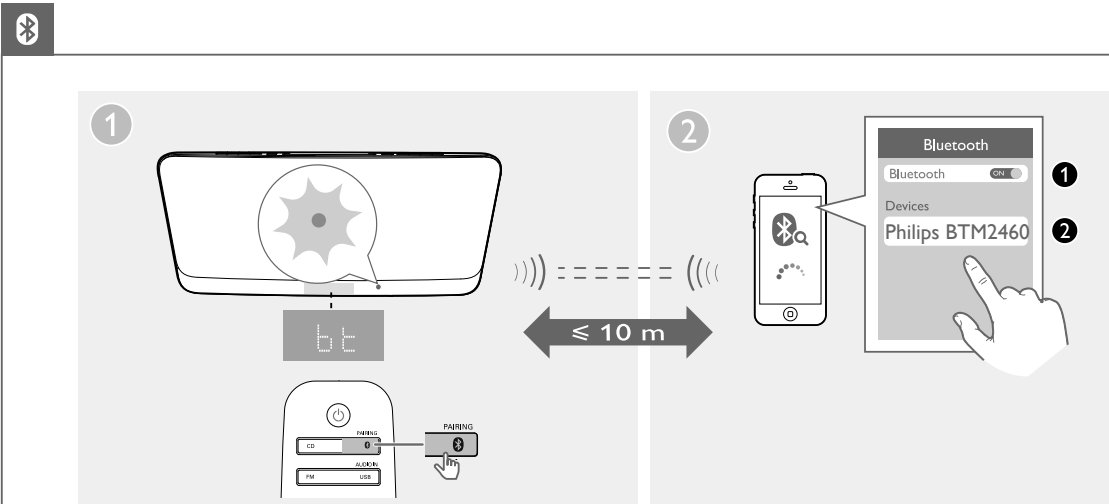


2015 © Gibson Innovations Limited. All rights reserved.  
This product has been manufactured by, and is sold under the responsibility of Gibson Innovations Ltd., and Gibson Innovations Ltd. is the warrantor in relation to this product.  
Philips and the Philips Shield Emblem are registered trademarks of Koninklijke Philips N.V. and are used under license from Koninklijke Philips N.V.  
BTM2460\_96\_Short User Manual\_V1.0

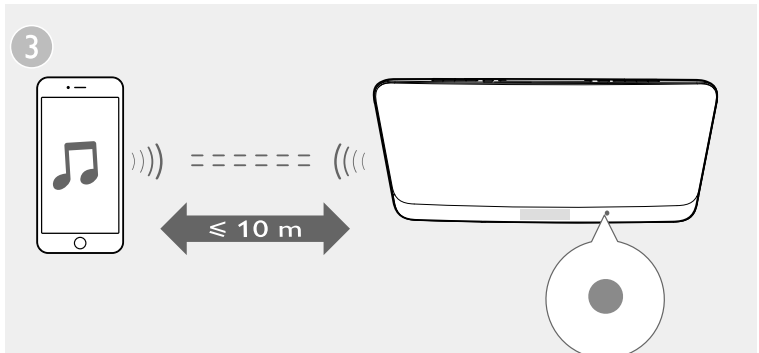


EN	
▲ / ▼	Select a folder.
◀ / ▶	Press to skip to the previous or next track. Press and hold to search backward/forward within a track.
⏸	Pause or resume play.
■	Stop play.
🔄	Play a track or all tracks repeatedly.
🎲	Play tracks randomly (Not applicable for the programmed tracks).

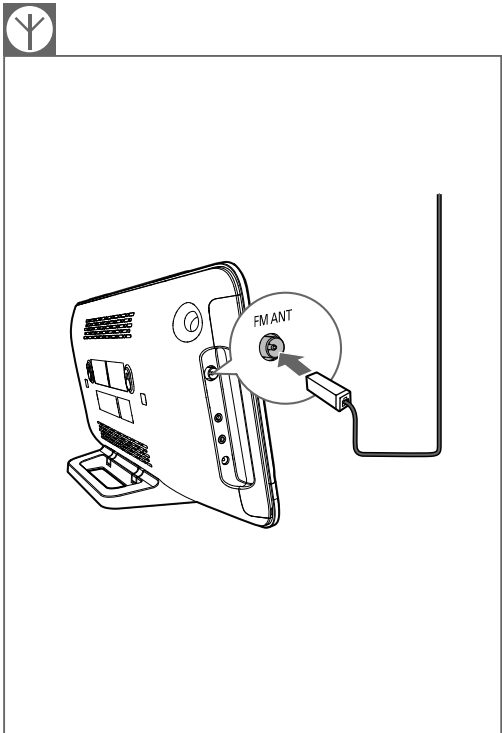
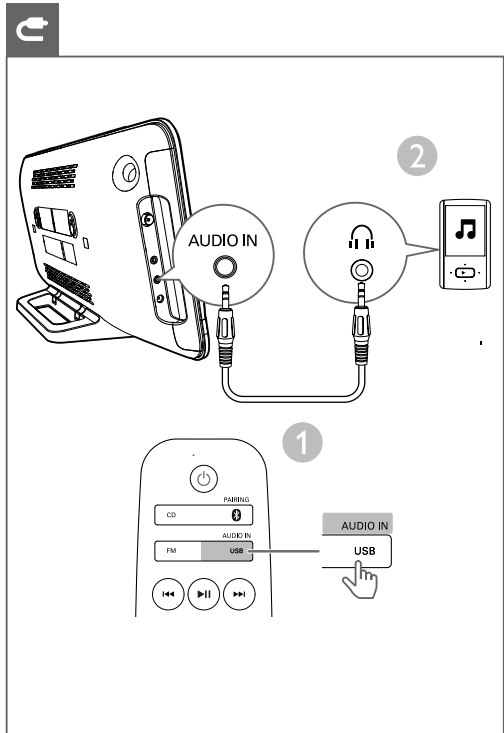
ZH-TW	
▲ / ▼	選擇資料夾。
◀ / ▶	按下可跳至上一/下一曲目。按住可在曲目內倒轉/快轉搜尋。
⏸	暫停或繼續播放。
■	停止播放。
🔄	重複播放一首或所有曲目。
🎲	隨機播放曲目 (不適用於編排曲目)。



- EN
- 1 Press **PAIRING** to select the **Bluetooth** source.
  - 2 On your device, enable Bluetooth and search for Bluetooth devices that can be paired, then select "Philips BTM2460". Input "0000" as the pairing password if necessary.  
→ After successful connection, the Bluetooth indicator turns solid blue, and the unit beeps twice.
  - 3 Play music on the connected device.  
• If you fail to search for "Philips BTM2460" or cannot pair with this unit, press and hold **PAIRING** for three seconds until you hear a single beep sound to enter pairing mode.

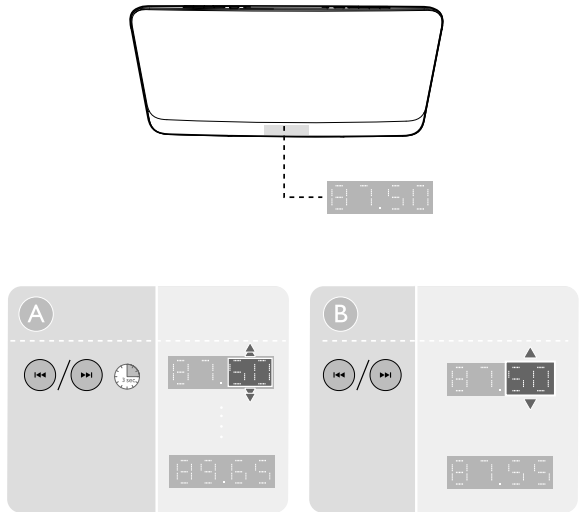


- ZH-TW
- 1 按 **PAIRING** 選擇藍牙來源。
  - 2 在您的裝置上，啟用藍牙並搜尋可配對的藍牙裝置，然後選擇「Philips BTM2460」。如有需要，請輸入配對密碼「0000」。  
→ 成功連線後，藍牙指示燈會持續亮藍燈，且裝置會發出嘟嘟聲。
  - 3 在連線的裝置上播放音樂。  
• 如果您搜尋不到「Philips BTM2460」，或無法與本裝置配對，請按住 **PAIRING** 三秒，直到聽到一次嘟嘟聲，即進入配對模式。





FM

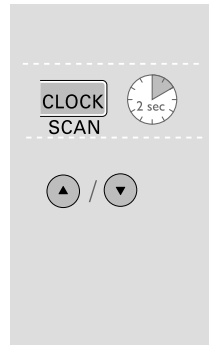


EN Tune to FM radio stations

ZH-TW 調至 FM 廣播電台

1

2



EN Store FM radio stations automatically

ZH-TW 自動儲存 FM 廣播電台

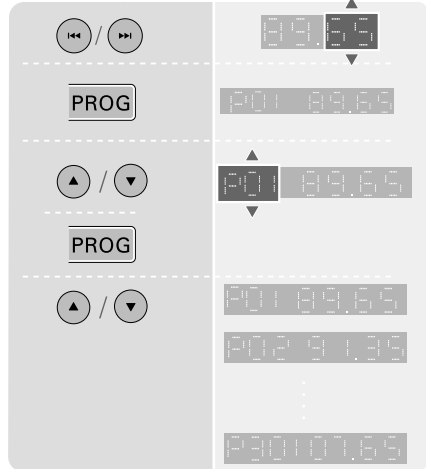
4

1

2

3

5



EN Store FM radio station manually

ZH-TW 手動儲存 FM 廣播電台

EN

## 1 Safety

- Make sure that there is enough free space around the product for ventilation.
- Only use attachments or accessories specified by the manufacturer.
- Battery usage CAUTION – To prevent battery leakage which may result in bodily injury, property damage, or damage to the product:
  - Install the battery correctly, + and - as marked on the product.
  - Remove the battery when the product is not used for a long time.
  - The battery shall not be exposed to excessive heat such as sunshine, fire or the like.
- Use only power supplies listed in the user manual.
- The product shall not be exposed to dripping or splashing.
- Do not place any sources of danger on the product (e.g. liquid filled objects, lighted candles).
- Where the plug of the Direct Plug-in Adapter is used as the disconnect device, the disconnect device shall remain readily operable.



Warning

- Never remove the casing of this device.
- Never lubricate any part of this device.
- Never place this device on other electrical equipment.
- Keep this device away from direct sunlight, naked flames or heat.
- Never look into the laser beam inside this device.
- Ensure that you always have easy access to the power cord, plug, or adaptor to disconnect this device from the power.

Hearing safety



Caution

- To avoid hearing damage, limit the time you use the headphones at high volume and set the volume to a safe level. The louder the volume, the shorter is the safe listening time.

Be sure to observe the following guidelines when using your headphones.

- Listen at reasonable volumes for reasonable periods of time.
- Be careful not to adjust the volume as your hearing adapts.
- Do not turn up the volume so high that you can't hear what's around you.
- You should use caution or temporarily discontinue use in potentially hazardous situations.
- Excessive sound pressure from earphones and headphones can cause hearing loss.

## 2 Notice

Any changes or modifications made to this device that are not expressly approved by Gibson Innovations may void the user's authority to operate the equipment.

### Disposal of your old product

Your product is designed and manufactured with high quality materials and components, which can be recycled and reused. Do not throw away the product with the normal household waste at the end of its life, but hand it in at an official collection point or recycling. By doing this, you help to preserve the environment.

### Environmental information

All unnecessary packaging has been omitted. We have tried to make the packaging easy to separate into three materials: cardboard (box), polystyrene foam (buffer) and polyethylene (bags, protective foam sheet.)

Your system consists of materials which can be recycled and reused if disassembled by a specialized company. Please observe the local regulations regarding the disposal of packaging materials, exhausted batteries and old equipment.



Be responsible  
Respect copyrights

This item incorporates copy protection technology that is protected by U.S. patents and other intellectual property rights of Rovi Corporation. Reverse engineering and disassembly are prohibited.



Bluetooth

The Bluetooth® word mark and logos are registered trademarks owned by Bluetooth SIG, Inc. and any use of such marks by Gibson Innovations Limited is under license. Gibson® is a registered trade mark of Gibson Brands Inc. Other trademarks and trade names are those of their respective owners.

This apparatus includes this label:



CLASS 1  
LASER PRODUCT



Note

- The type plate is located on the back of the device.

ZH-TW

## 1 安全性

- 請確認產品周圍有足夠空間以保持通風。
- 請僅使用原廠指定的附件或配件。
- 電池使用注意事項 – 為防止電池滲漏導致人身傷害、財物受損或產品損壞：
  - 請依照產品上標示的 + 和 - 正確安裝電池。
  - 若有一段長時間不會使用產品，請將電池取出。
  - 請勿讓電池暴露在過熱溫度下，例如日照、火焰等。
- 限用使用手冊上所列的電源供應器。
- 切勿將本產品置於滴水或濕水環境中。
- 請勿在產品上放置危險物品（如盛裝液體的容器、點燃的蠟燭等）。
- 直接插入式電源變壓器的插頭作為中斷連接裝置時，中斷連接裝置應保持隨時可操作。
- 經型式認證合格之低功率射頻電機，非經許可，公司、商號或使用者均不得擅自變更頻率、加大功率或變更原設計之特性及功能。
- 低功率射頻電機之使用不得影響飛航安全及干擾合法通信；經發現有干擾現象時，應立即停用，並改善至無干擾時方得繼續使用。



警告

- 請勿打開裝置外殼。
- 請勿在此裝置的任何部位使用潤滑油。
- 請勿將此裝置放置在其他電器上。
- 請勿讓此裝置直接曝曬於陽光下，或靠近未隔離的火鍋或熱源。
- 請勿直視此裝置內的雷射光。
- 請確保電源線、插頭或變壓器位於容易取得的地方，以方便中斷裝置電源。

聽力安全



注意

- 若要避免損害聽力，請限制以高音量使用耳機的時間，並將音量設定至安全音量。音量愈大，安全聆聽時間愈短。

使用耳機時務必遵守以下準則。

- 音量適中，適時休息。
- 注意勿因聽覺適應而不斷調高音量。
- 勿將音量調高至聽不到週遭聲音的程度。
- 在有潛在危險的環境應提高警覺或暫不使用本產品。
- 長時間使用耳機並暴露在高分貝下可能導致聽覺喪失。

## 2 注意

未經 Gibson Innovations 明示核可即變更或修改本裝置，可能導致使用者操作設備的授權失效。

### 舊產品的處置

您的產品是使用高品質材質和元件所設計製造，可回收和重複使用。本產品使用壽命結束時，請勿與一般家庭廢棄物一併丟棄。請將該產品送至政府指定的回收點或進行回收。此舉能為環保盡一份心力。

### 環境保護資訊

所有非必要之包裝材料均已省略。我們嘗試讓包裝可以輕易拆解成三種材質：厚紙板（外盒）、聚苯乙烯泡綿（防震）以及聚乙烯（包裝袋、保護性泡綿膠紙）。產品本身含有可回收並重複使用的材質，但是需由專業公司拆解。請根據地方法規丟棄包裝材料、廢電池和舊器材。



Be responsible  
Respect copyrights

本物品採用具有版權保護的技術，受到某些美國專利及 Rovi Corporation 的其他智慧財產權保護。禁止進行反向工程或拆解。



Bluetooth

Bluetooth® 文字標記及標誌為 Bluetooth SIG, Inc. 的註冊商標，Gibson Innovations Limited 對這些標記的使用均已獲得授權。Gibson® 是 Gibson Brands Inc. 的註冊商標。其他商標與商品名稱為其各自擁有者所有。本產品包含此標籤：

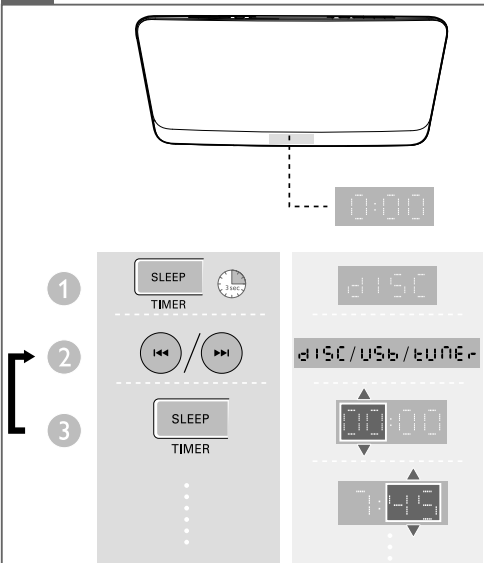


CLASS 1  
LASER PRODUCT



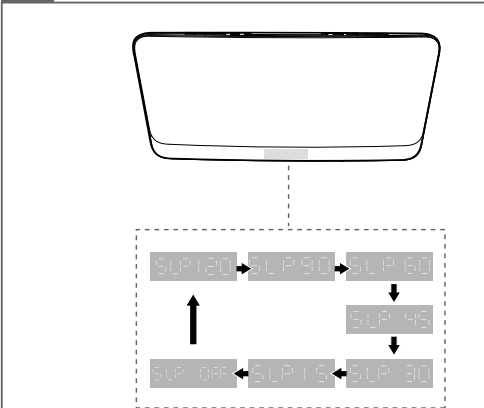
備註

- 機型牌位於產品背面。



EN Repeat steps 2-3 to set the hour, minute, and adjust volume of the alarm.

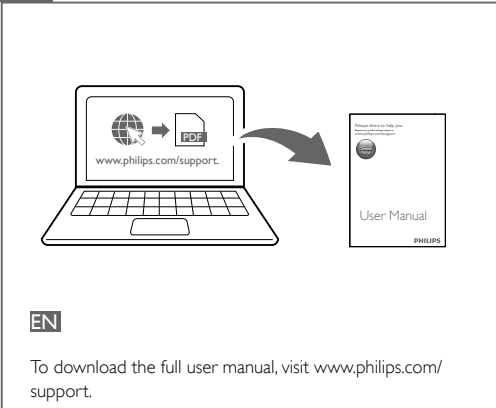
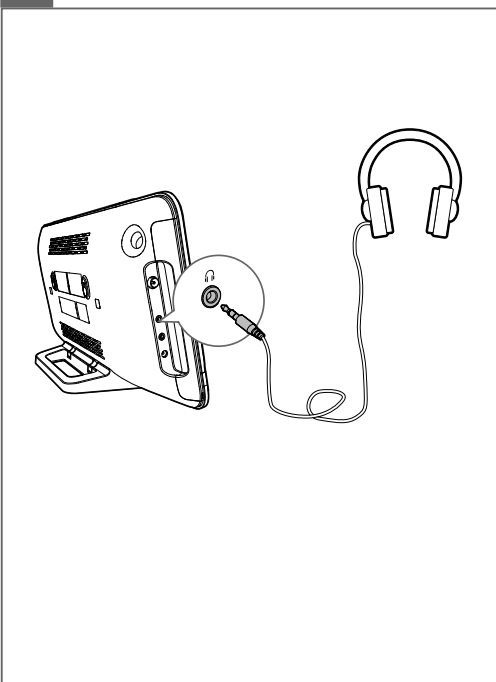
ZH-TW 重複步驟 2 至 3，以設定小時、分鐘並調整鬧鐘音量。



EN Press SLEEP/TIMER repeatedly to select a set period of time (in minutes).  
→ When the sleep timer is activated, [SLEEP] is displayed.

ZH-TW 重複按 SLEEP/TIMER 選擇一段固定的時間（單位為分鐘）。

→ 當睡眠定時器啟用時，會顯示 [SLEEP]。



EN

To download the full user manual, visit [www.philips.com/support](http://www.philips.com/support).

ZH-TW

若要下載完整的使用手冊，請造訪 [www.philips.com/support](http://www.philips.com/support)。



EN Specifications	
Amplifier	
Rated Output Power	2 × 10 W
Frequency Response	63 -20KHz, +/-3dB
Total Harmonic Distortion	<1%(1 KHz)
Signal to Noise Ratio (A-weighted)	>72dBA
Disc	
Audio DAC	24 Bits/44.1 kHz
Frequency Response	63Hz - 20kHz, +/- 3dB
Bluetooth	
Bluetooth version	V3.0 +EDR
Bluetooth frequency band	2.4GHz ~ 2.48GHz ISM Band
Range	10 m (free space)
USB	
USB Direct Version	2.0 full speed
Tuner (FM)	
Tuning Range	87.5-108 MHz
Tuning grid	50 KHz
Preset stations	30

General information	
AC power	Model: AS360-120-AA250 Input: 100-240V~, 50/60 Hz, 1.2A Output: DC 12.0V, 2.5A
Eco Standby Power Consumption	<0.5W
Dimensions - Main Unit (W × H × D)	465 × 233 × 107 mm
- D-Box (W × H × D)	520 × 323 × 123 mm
Weight - Main Unit	2.4 kg
- With Packing	3.6 kg

ZH-TW

## 規格

### 擴大機

額定輸出功率	2 × 10 W
頻率響應	63 - 20kHz, +/-3dB
總諧波失真	<1% (1 KHz)
訊噪比 (A-加權)	>72dBA

### 光碟

音訊 DAC	24 Bits/44.1 kHz
頻率響應	63Hz - 20kHz, +/- 3dB

### 藍牙

藍牙版本	V3.0 +EDR
藍牙頻率波段	2.4GHz ~ 2.48GHz ISM 波段
範圍	10 米 (自由空間)

### USB

USB Direct 版本	2.0 全速
---------------	--------

### 調諧器 (FM)

調諧範圍	87.5-108 MHz
變更調棚	50 KHz
預設電台	30

### 一般資訊

AC 電源	機型：AS360-120-AA250 輸入：100-240V~, 50/60Hz, 1.2A 輸出：DC 12.0V, 2.5A
-------	--

### 節能待機耗電量

尺寸 - 主裝置 (寬 × 高 × 深)	465 × 233 × 107 公釐
- D-Box (寬 × 高 × 深)	520 × 323 × 123 公釐

重量 - 主裝置	2.4 公斤
- 含包裝	3.6 公斤