

# Always there to help you

Register your product and get support at  
[www.philips.com/support](http://www.philips.com/support)



HTB3520  
HTB3550  
HTB3580

# Quick start guide

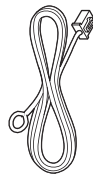
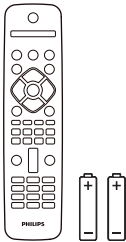
**PHILIPS**



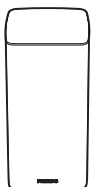
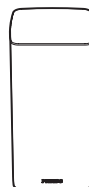
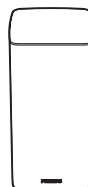
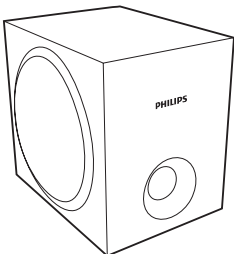
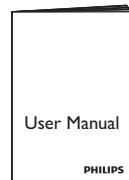
Before using your product, read all accompanying safety information



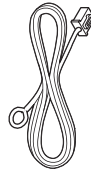
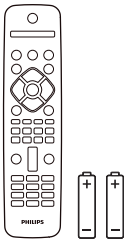
## HTB3520



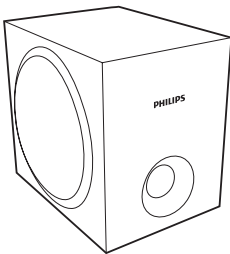
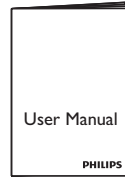
FM Antenna



**HTB3550**



FM Antenna



2x



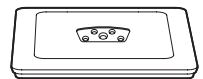
2x



8x

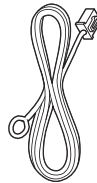
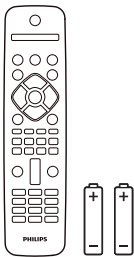


2x

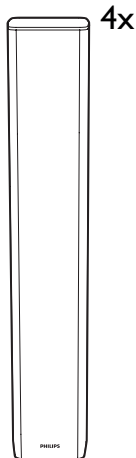
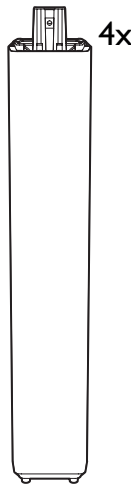
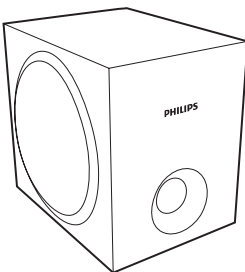
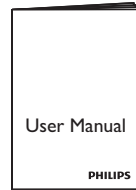


2x

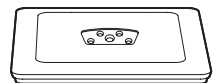
# HTB3580



FM Antenna



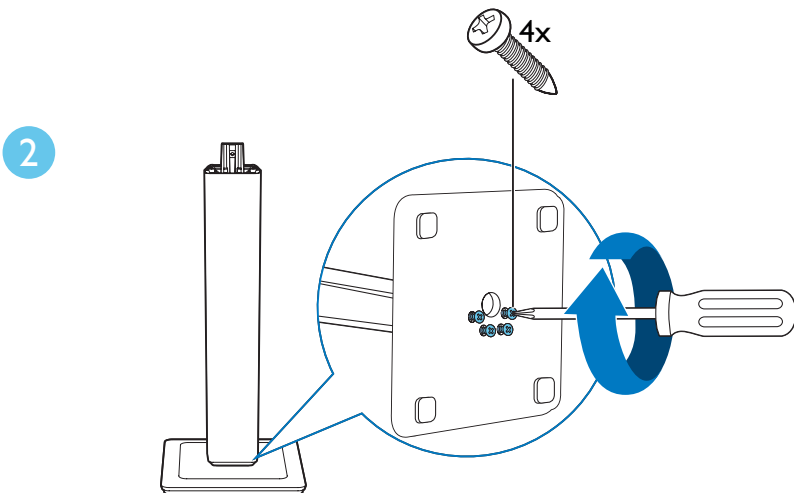
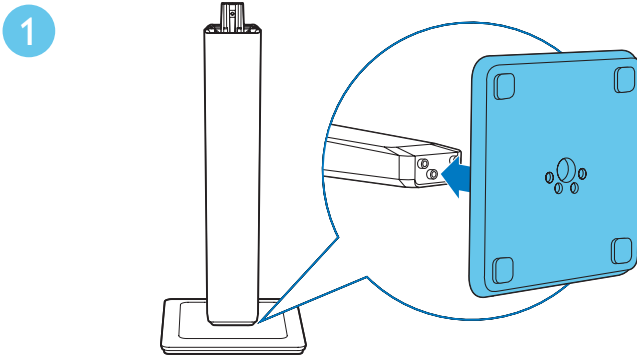
4x



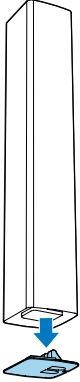
# 1

Stand mount the speakers

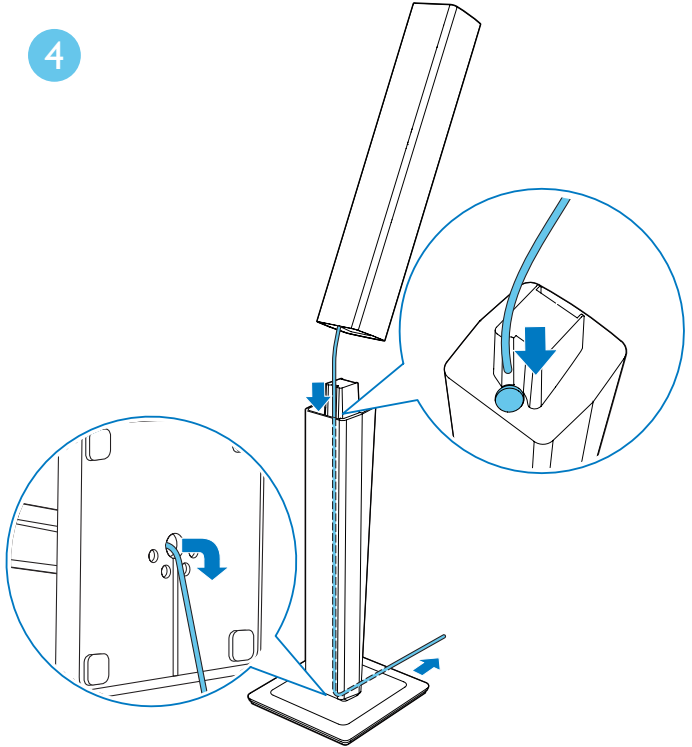
Applied to HTB3550 and HTB3580 only



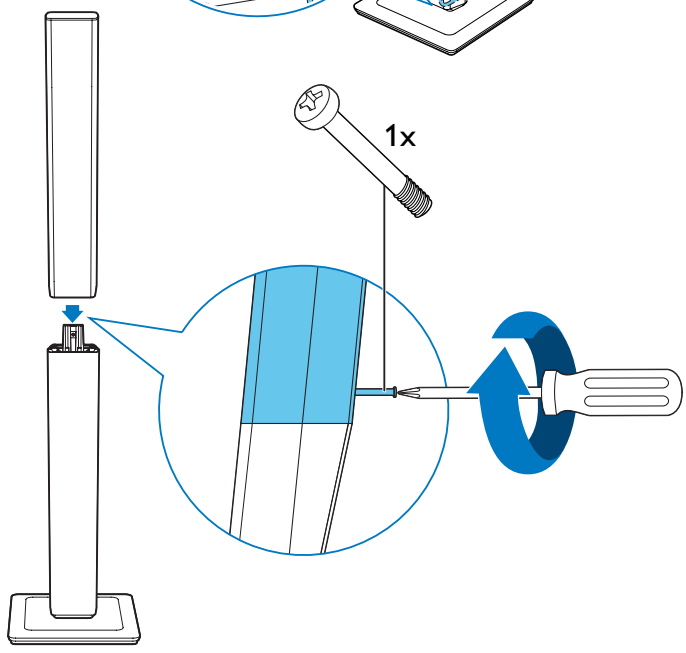
3



4



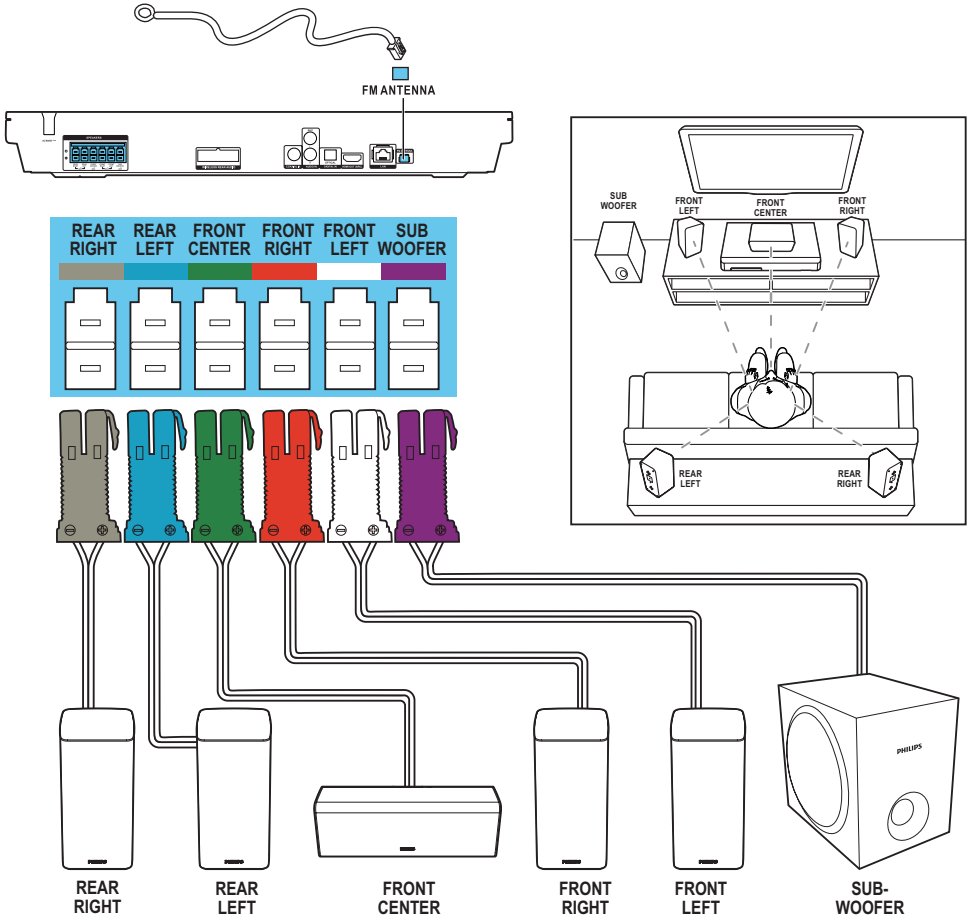
5



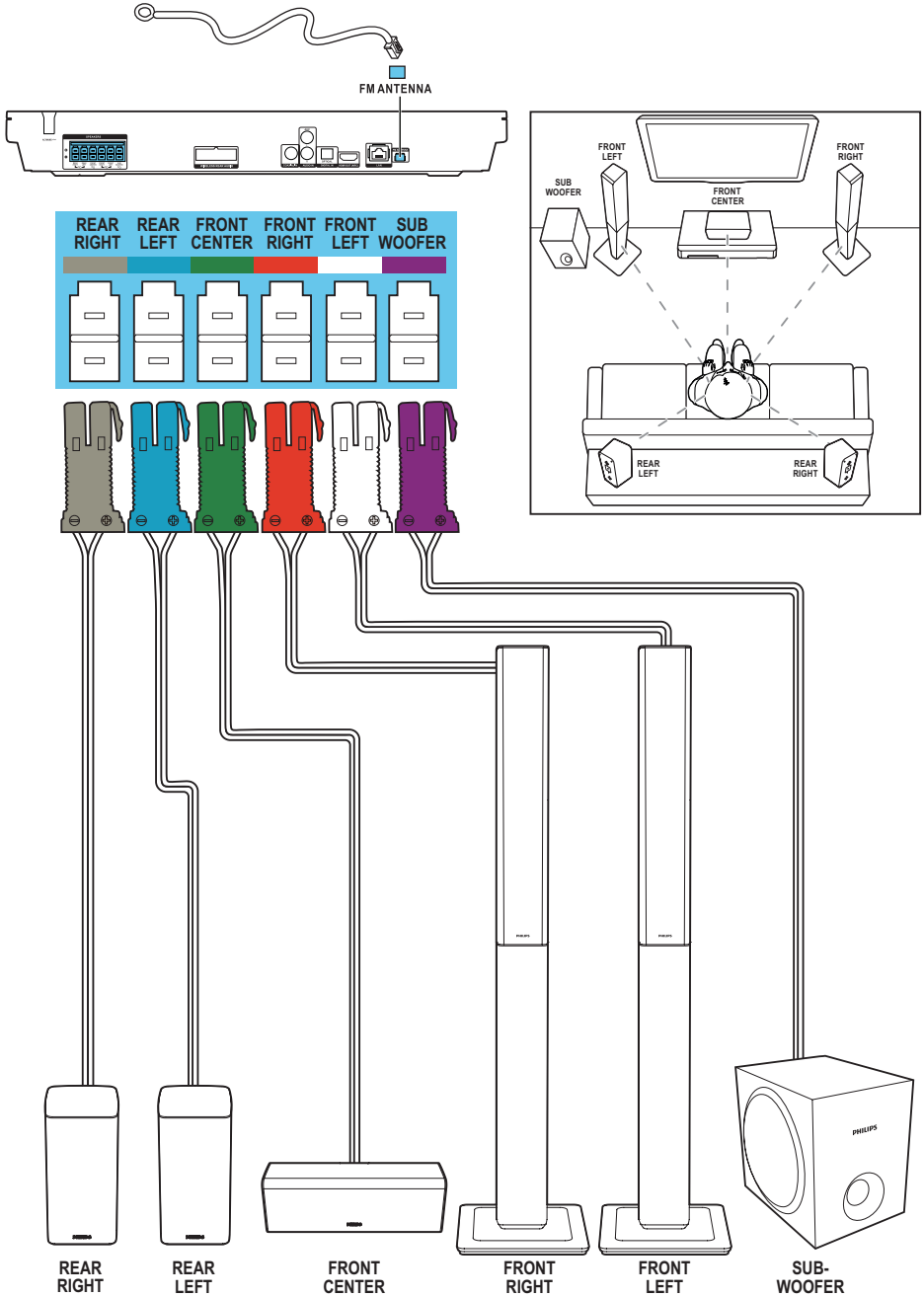
# 2

Connect the home theater

## HTB3520

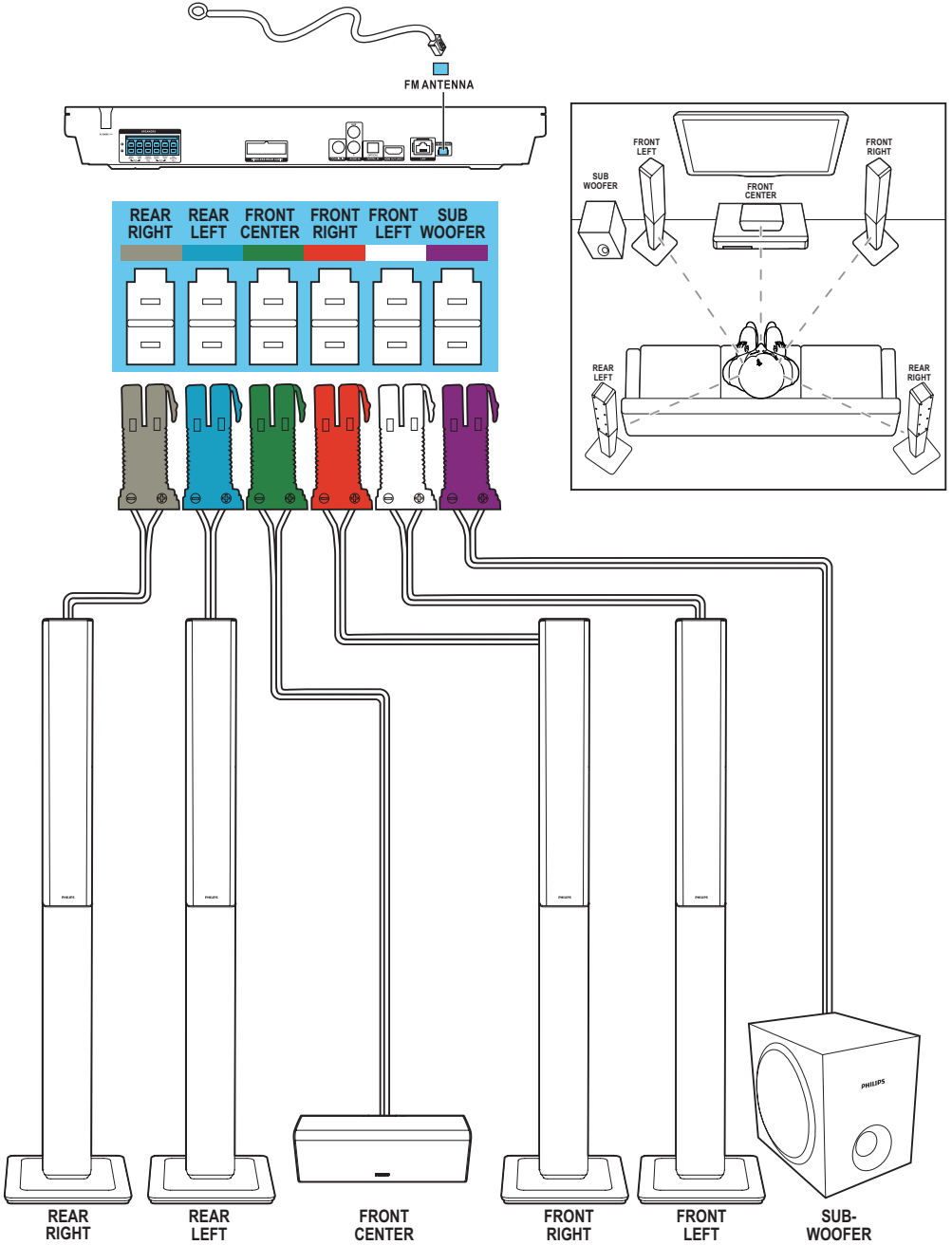


# HTB3550



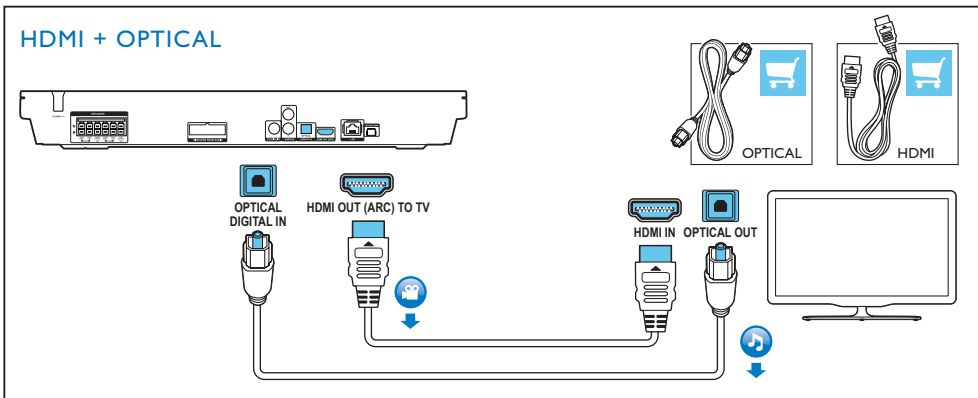
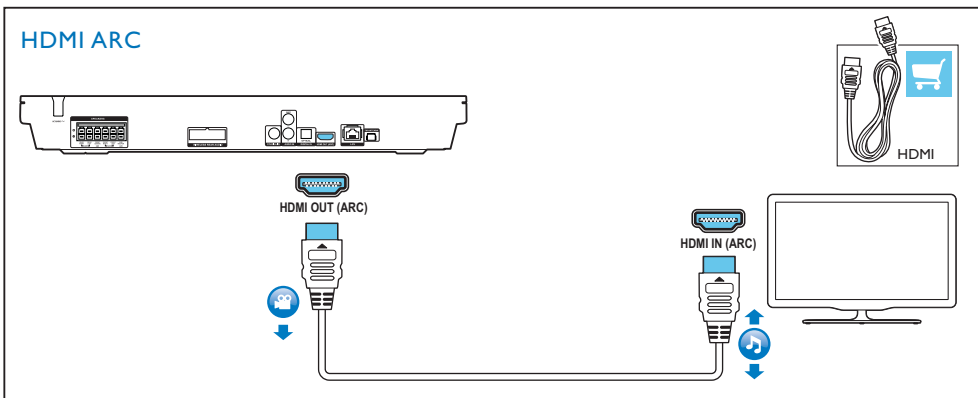


# HTB3580

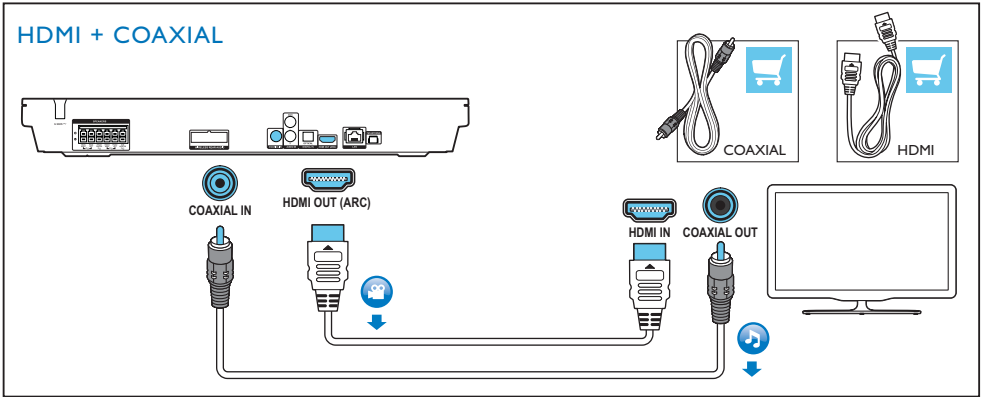


# 3

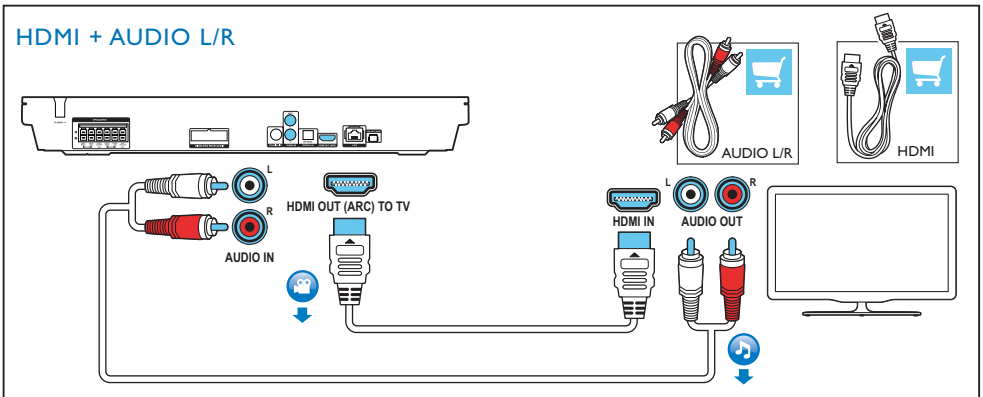
Connect to TV in one of these ways



## HDMI + COAXIAL



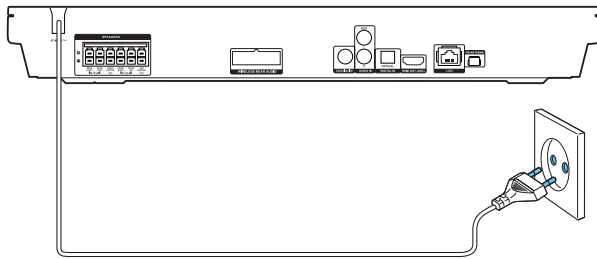
## HDMI + AUDIO L/R



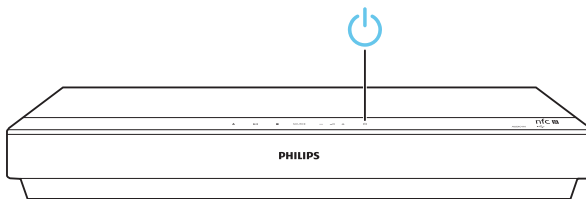
# 4

Switch on the home theater

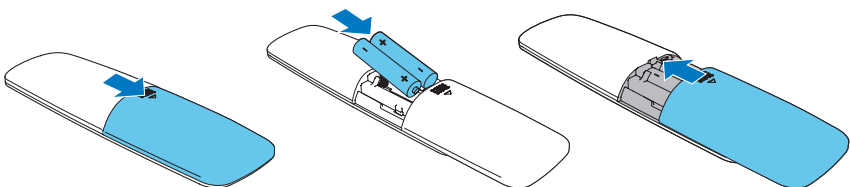
1



2

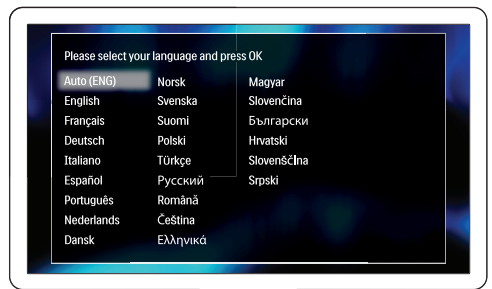
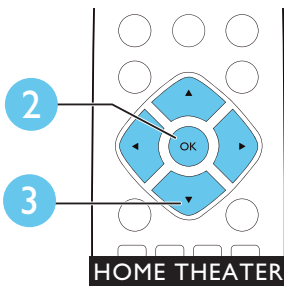
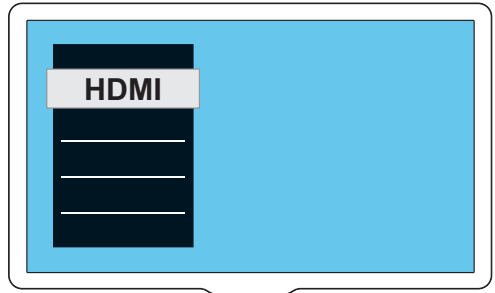
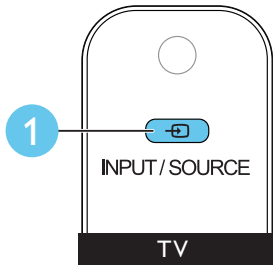


3



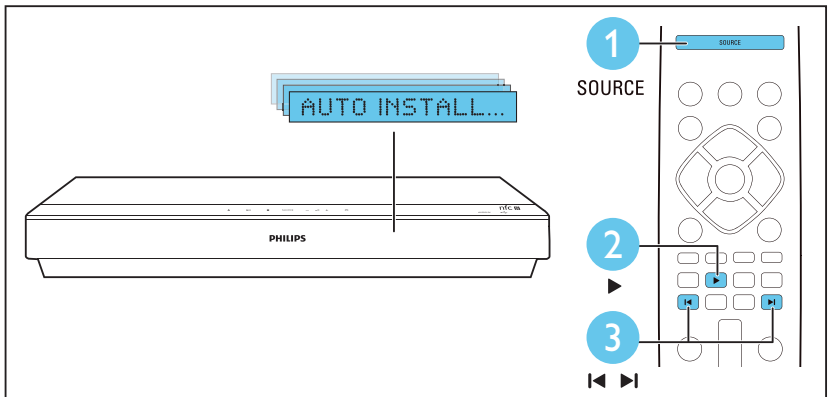
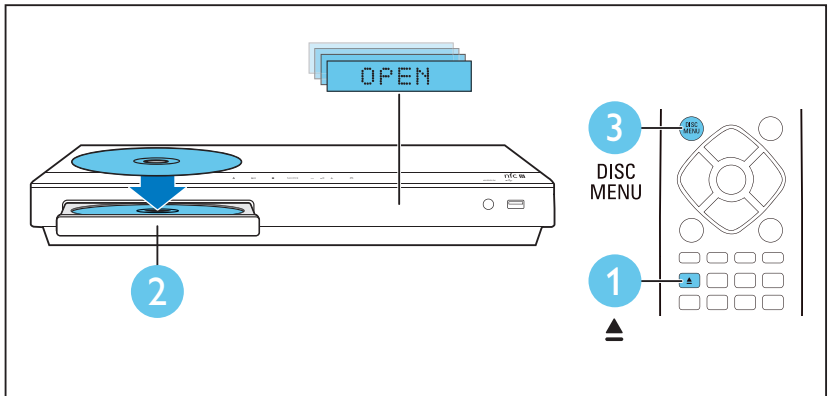
# 5

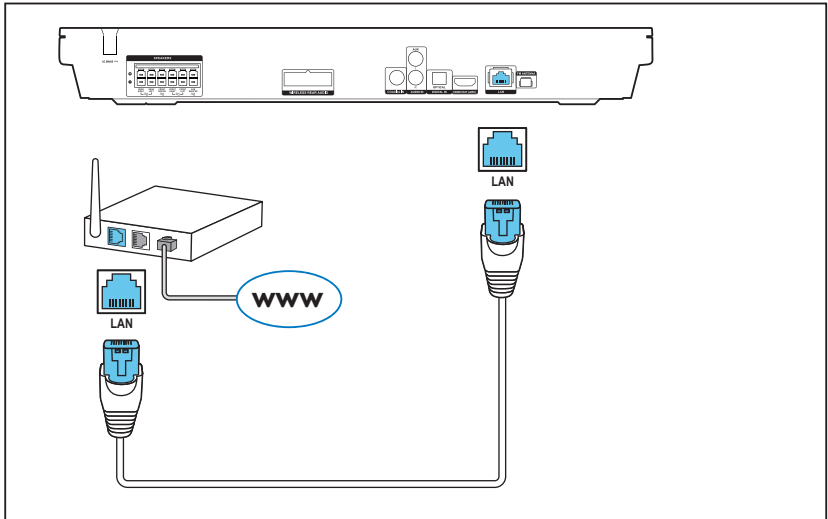
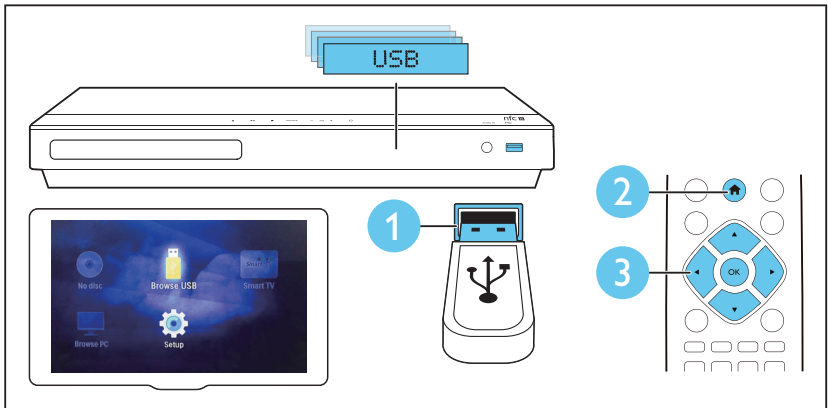
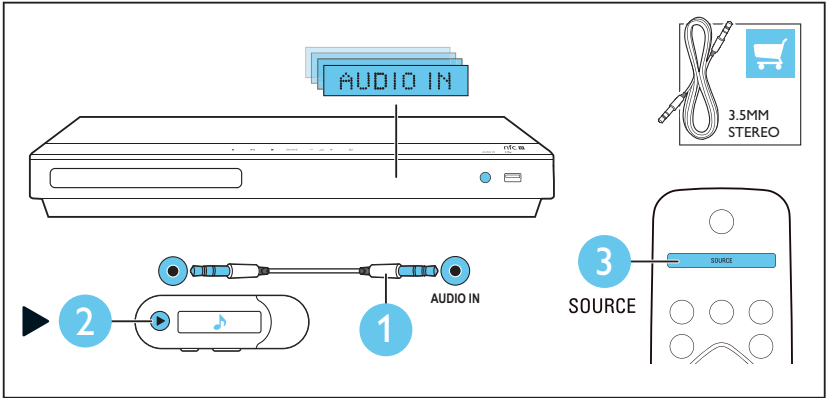
Complete the first time setup



# 6

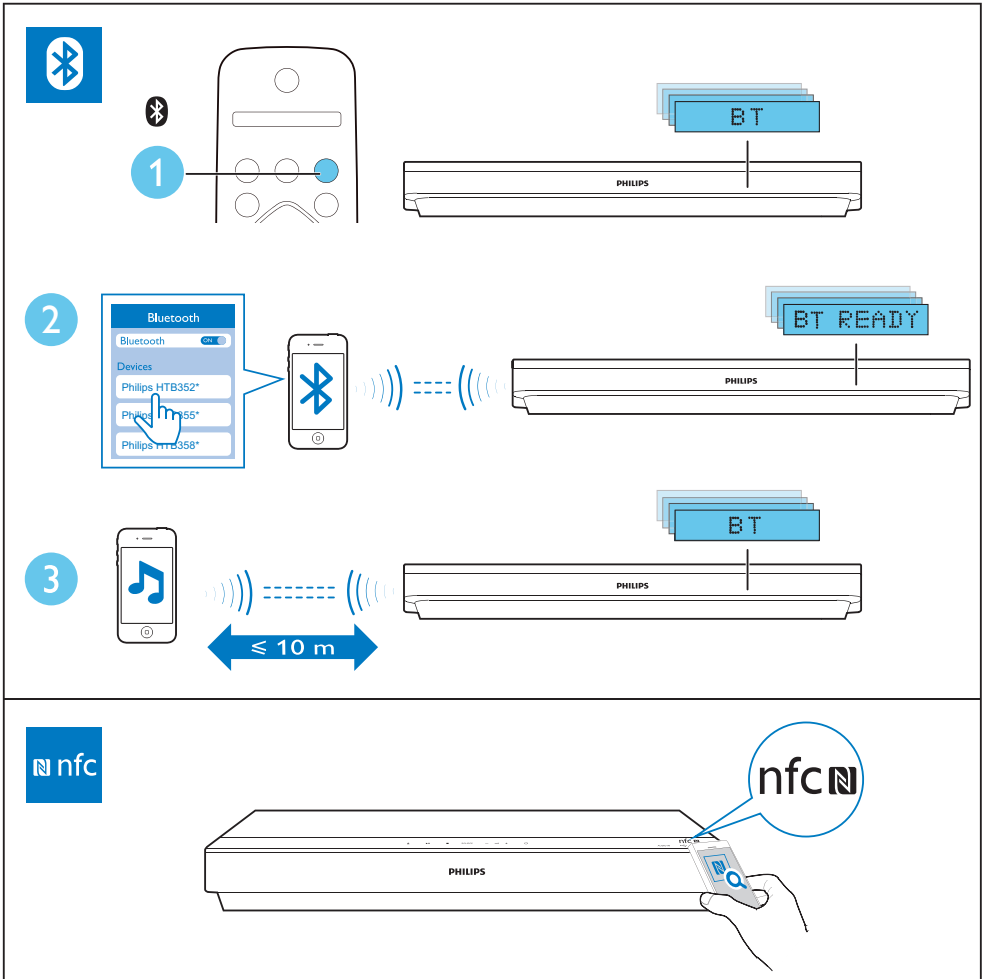
Use your home theater





# 7

Play audio through Bluetooth or connect Bluetooth via NFC







For more information about using this product, visit [www.philips.com/support](http://www.philips.com/support)



[www.philips.com/support](http://www.philips.com/support)



Specifications are subject to change without notice

© 2015 Koninklijke Philips N.V. All rights reserved.

Trademarks are the property of Koninklijke Philips N.V. or their respective owners.

HTB3520/3550/3580\_79\_QSG\_V3.0

