



Philips
In-ear headphones with
mic

13.5-mm drivers/closed-back
In-ear

TX2BK

High-Resolution Sound

Premium drivers with oval sound tubes

The Philips TX2 delivers high resolution sound with extended bass thanks to premium drivers and oval sound tubes. Custom-fit comfy ear caps ensure an immersive experience, while the flat cable keeps you tangle free.

Stay connected to your music and friends

- Built-in microphone switches you from music to phone calls

Sound technology excellence

- High-resolution audio reproduces music in its purest form
- Brass metal ring reduces vibrations for sound clarity
- Hybrid architecture for precise sound and extended bass
- Noise-isolating ear caps to block out ambient noise
- Ultra-lightweight voice coil for extended high frequencies

Design for convenience

- Reinforced cable relief enhances durability and connectivity
- Tangle-free flat cable with slider for convenience on the go

Supreme comfort

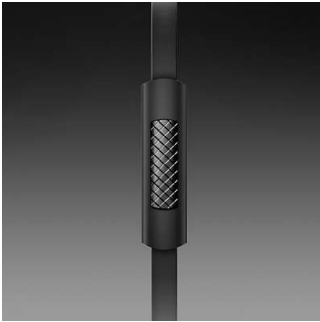
- Choose from 3 pairs of ear caps for the perfect fit
- Ergonomic oval sound tube fits securely and comfortably

PHILIPS

In-ear headphones with mic
13.5-mm drivers/closed-back In-ear

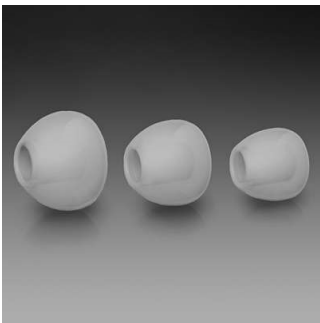
Highlights

Built-in microphone



The built-in microphone lets you switch from listening to music to taking phone calls - easily, so you'll always stay connected with what matters most to you.

Choice of 3 pairs of ear caps



Ear caps come in a choice of 3 sizes – small, medium and large – for a personalised and perfect fit.

Brass metal ring

The lightweight brass metal ring reduces vibration to ensure sound clarity and precision.

Ergonomic oval sound tube

The oval shape of the sound tube came about based on extensive research on the human ear. Designed to fit any ear comfortably, the

ergonomic shape ensures optimal fit and comfort for total music enjoyment.

Hybrid architecture



Hybrid architecture utilises high-power neodymium magnets for high-precision sound and enhanced bass impact. Its hybrid form factor utilises larger 13.5-mm speakers in a compact headphone insert, which results in higher-quality sound along with true comfort.

Noise-isolating ear caps



Noise-isolating ear caps block out the ambient noise so that you can immerse yourself fully in your music, without any disturbance.

Reinforced cable relief

To extend the life of your headphones, a soft rubber relief between them and the cable

TX2BK/00

protects the connection from damage through repeated bending.

Tangle-free flat cable

Flat cable ensures that your cord stays smooth and tangle-free - always. The cable slide adds stylish ease and convenience on the go.

Ultra-lightweight voice coil

The ultra-lightweight voice coil is attached to the speaker, providing the motive force via a magnetic field reaction to the current that passes through it. Because the moving parts of a speaker must be of low mass to accurately reproduce high-frequency sounds, voice coils need to be as lightweight as possible.

High-resolution audio



High-Resolution Audio offers the best in audio performance, reproducing original studio master recordings more faithfully than 16-bit/44.1-kHz CD formats. This uncompromising quality makes High-Resolution Audio the best sound companion for the music lover. These headphones meet the stringent standards required for the Hi-Res Audio stamp of quality.

Specifications

Sound

- Acoustic system: closed
- Frequency response: 6 - 40,000 Hz
- Diaphragm: Mylar
- Magnet type: Neodymium
- Voice coil: CCAW
- Speaker diameter: 13.5 mm
- Sensitivity: 108 dB
- Maximum power input: 30 mW
- Impedance: 32 ohm

Connectivity

- Cable Connection: symmetrical
- Cable length: 1.2 m
- Type of cable: Copper
- Finishing of connector: Gold-plated
- Compatible with: iPhone®, BlackBerry®, HTC, LG, MOTOROLA, NOKIA*, SAMSUNG*, SONY
- * Only for latest models. Extra connector available through customer support for Sony Ericsson, older models from NOKIA and SAMSUNG
- Connector: 3.5 mm

Outer Carton

- Length: 38 cm
- Number of consumer packages: 24
- Width: 19.3 cm
- Gross weight: 2.108 kg
- Height: 25 cm

- GTIN: 1 69 23410 72455 1
- Net weight: 0.4176 kg
- Tare weight: 1.6904 kg

Inner Carton

- Length: 18 cm
- Number of consumer packages: 3
- Width: 8.6 cm
- Height: 10.5 cm
- Net weight: 0.0522 kg
- Gross weight: 0.2275 kg
- Tare weight: 0.1753 kg
- GTIN: 2 69 23410 72455 8

Packaging dimensions

- Height: 17.5 cm
- Packaging type: Carton
- Type of shelf placement: Both
- Width: 9.5 cm
- Depth: 2.6 cm
- Number of products included: 1
- EAN: 69 23410 72455 4
- Gross weight: 0.064 kg
- Net weight: 0.0174 kg
- Tare weight: 0.0466 kg

Design

- Colour: Black



Issue date 2024-03-24

Version: 5.0.5

EAN: 69 23410 72455 4

© 2024 Koninklijke Philips N.V.
All Rights reserved.

Specifications are subject to change without notice.
Trademarks are the property of Koninklijke Philips N.V.
or their respective owners.

www.philips.com