

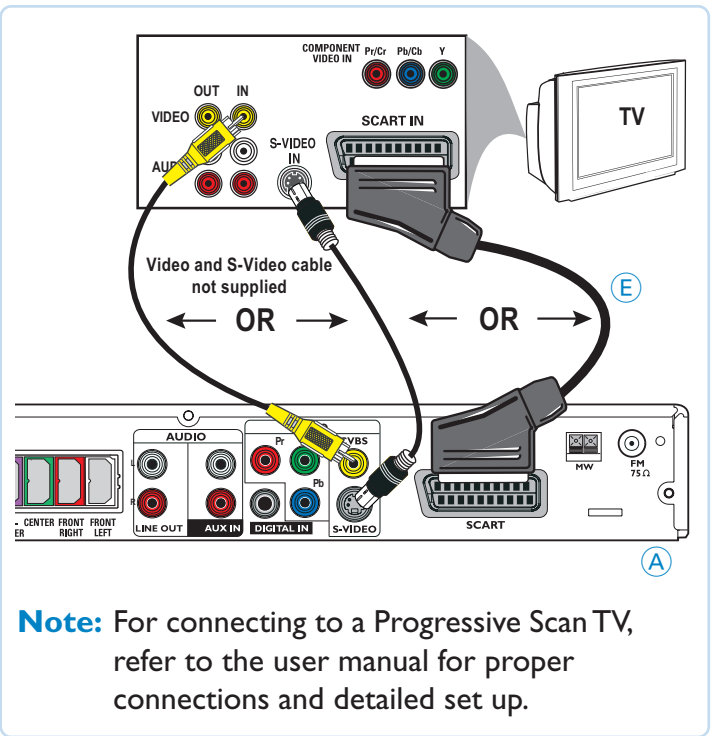
QUICK START GUIDE

HTS5000W
12nc: 3139 115 63522

1 what's in the box

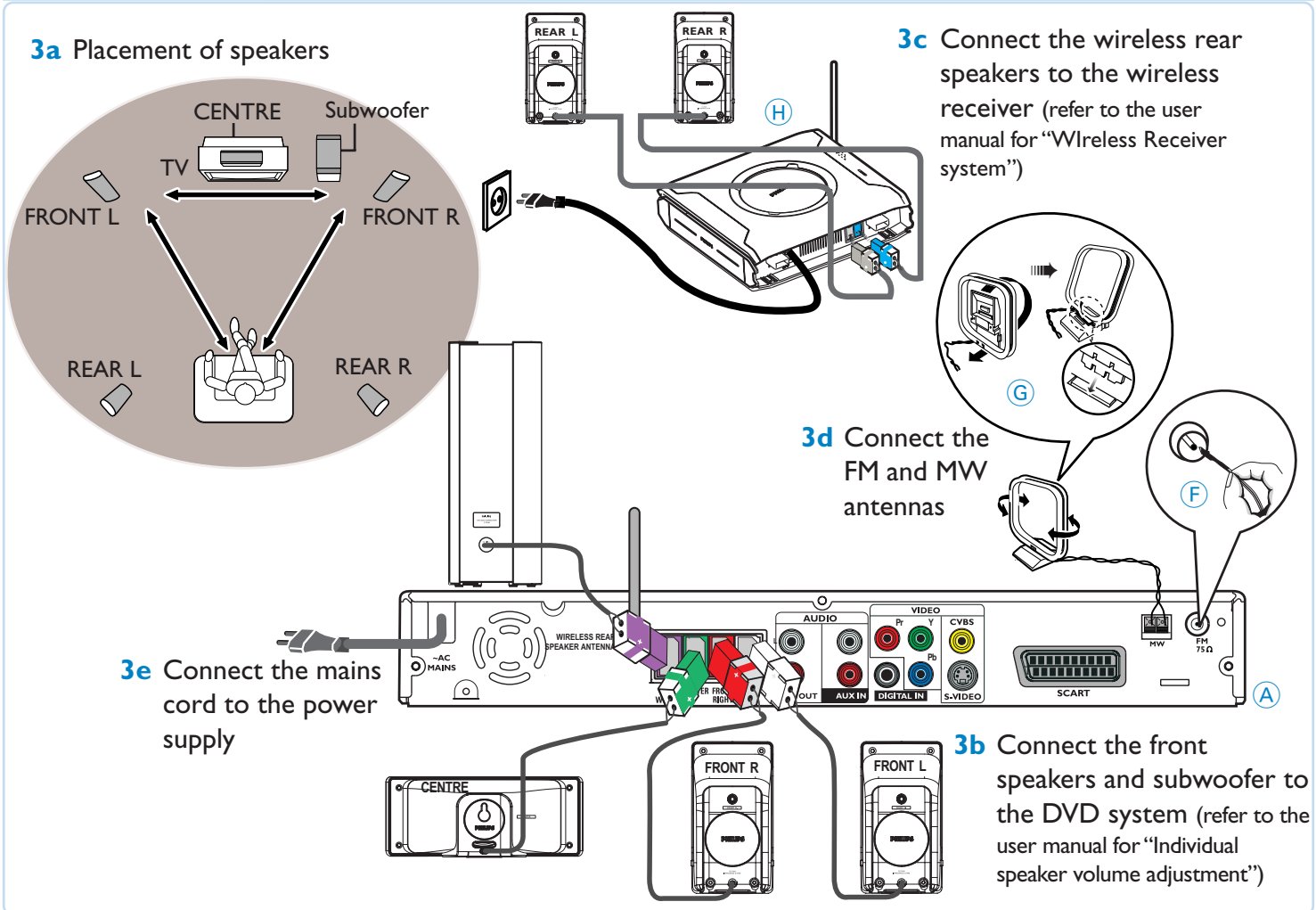


2 connect TV

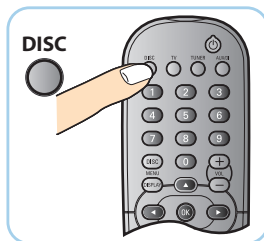


3 connect subwoofer, speakers and antennas

3a Placement of speakers

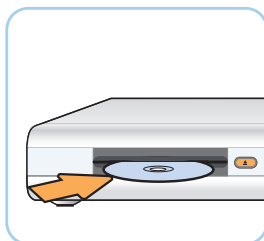


4 play a disc



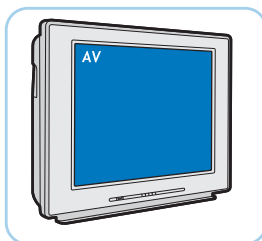
4a Press **DISC**.

Point the remote control towards the DVD system.



4b Insert a disc.

Press **EJECT** to eject in the disc.



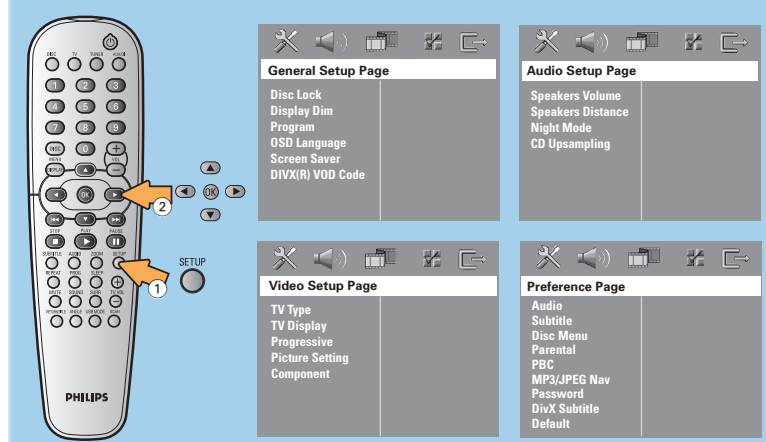
4c Select correct AV In channel

Switch to the correct input source by using the TV remote control.

GET PICTURE

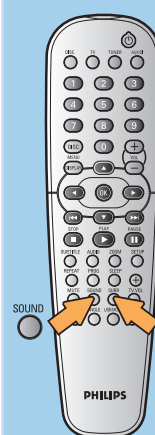
- Check the connection of the DVD system to TV is in place (see [2 Connect TV](#)).
- Check the AV mode on TV. It may be called FRONT, A/V IN, or VIDEO. Choose the different modes using TV remote control.
- Or, use the TV remote control to select Channel 1 on TV, then press Channel down button until you get the picture.
- See your TV manual for more details.

More settings and features



Refer to chapters “DVD Setup Menu Options” in the user manual for detailed descriptions.

GET SOUND



No sound from rear speakers?

Press **SURR** button to select “Multi-Channel”.

To enhance the sound quality

Press **SOUND** button to select a predefined digital sound effect.

Detailed playback features and additional functions are described in the user manual.

5 wireless receiver setup

5a Turn on the DVD system and playback a disc.

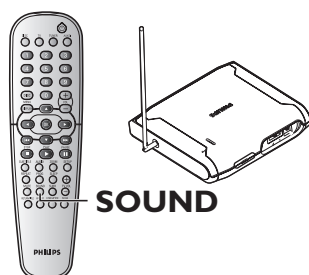
5b Select the same transmission frequency channel for both wireless transmitter and receiver.

The wireless system will automatically turn on when receiving an audio signal and vice versa.)

On the wireless transmitter :

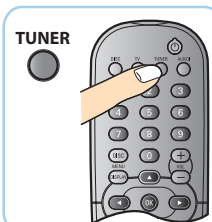
The default preset frequency is (1).

Press and hold **SOUND** button on the remote until the best frequency that obtains optimal reception.



Refer to chapters “Wireless Receiver system” in the user manual for detailed descriptions.

6 programme radio stations



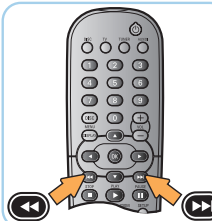
6a Press **TUNER**.

AUTO INSTALL PRESS PLAY

Note: This feature is only available for first time setup.



6b Press **PLAY** ► to start auto installation. It will start to programme all available radio stations.



6c Once complete, use ◀◀ / ▶▶ to select a preset radio station.

NEEDS HELP? Visit our website www.philips.com/support