



Philips Philips Fidelio
SkyQuake soundbar
speaker

5.1.2 CH wireless subwoofer

Dolby Atmos®
Ambisound technology
Bluetooth® aptX, AAC and NFC



B8

Enter a new dimension

Discover 3D cinematic sound with Dolby Atmos®

Experience a whole new audiovisual world of 3D sound with Philips Fidelio SkyQuake. Dolby Atmos® and Ambisound deliver a revolutionary entertainment experience by adding height dimension to sound, for an incredibly realistic 3D soundscape.

High fidelity sound

- 220W Powerful wireless subwoofer for deep and thumping bass
- 5.1.2 Multi-channel for true immersive 3D cinematic sound
- Ambisound technology for wide surround sound experience
- Dedicated centre channel provides true voice clarity
- Dolby Atmos® delivers a new sense of overhead dimension
- Dolby TrueHD and DTS for high fidelity surround sound
- Dolby Surround creates 3D sound from channel-based content
- Premium soft dome tweeters for crystal clear high pitches

Designed to enhance your living space

- Sleek and premium design blends seamlessly with any TV

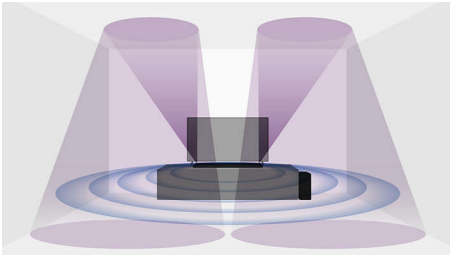
Connect and enjoy all your entertainment

- Bluetooth® (aptX® and AAC) for wireless music streaming
- One-Touch with NFC-enabled smartphones for Bluetooth pairing
- HDMI 4K2K pass-through for ultra HD content enjoyment

PHILIPS
Fidelio

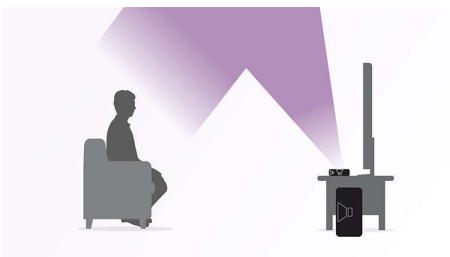
Highlights

5.1.2 Multi-channel



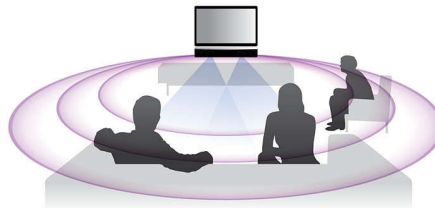
Philips Fidelio B8 is a 5.1.2 multichannel soundbar with a total of 18 speakers (10 highly sensitive racetrack drivers and 8 soft dome tweeters), delivering immersive sound with a sleek form factor. In addition to traditional 5.1, two additional patented up-firing speakers (each comprising 2 racetrack drivers and 3 tweeters) are engineered to beam sound towards the ceiling, bringing the height dimension to the sound experience. By incorporating Dolby Atmos® and Philips proprietary Ambisound technology, B8 delivers an incredibly realistic 3D soundscape.

Dolby Atmos®



Dolby Atmos® adds the dimension of overhead sound — a new sensation of height that puts you in the middle of the action. The full 3D audio atmosphere realistically positions objects moving right above you, rendering everything from quiet conversations to whirlwind action with astonishing clarity, richness and depth. It all comes together as a truly exciting home cinema sound experience, triggering your senses to immerse you deeper in the action than ever before.

Ambisound technology



Philips proprietary Ambisound technology delivers embracing multi-channel surround sound, producing an incredibly sound stage. This is 5.1 sound without the constraining requirements of positioning, room size and complicated setup, and without the clutter of multiple speakers and cables around the room. Ambisound enables panoramic 5.1 sound from a single, slim soundbar by combining three key factors — psychoacoustics, array processing and precisely angled driver positioning.

220W Powerful wireless sub

Philips Fidelio B8 incorporates a powerful 220W wireless subwoofer, carrying a 20.3-cm (8") downfiring driver to deliver deep, thumping bass. Its dome-shaped base reflector not only prevents damping effects when the subwoofer is on a carpet, it also strengthens and enhances bass by radiating low frequency sound waves smoothly in 360 degrees. Feel deep bass spread evenly all around you, no matter where you position the wireless sub in your room.

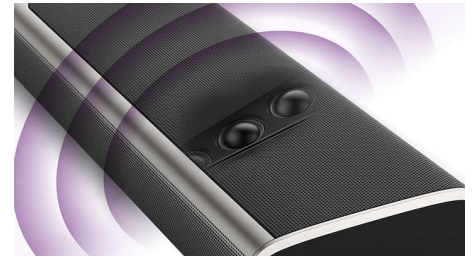
Dedicated centre channel



For most soundbars, the centre channel is down-mixed into 2.1 channel. Therefore, voices are not very clear. Philips Fidelio B8 uses two dedicated drivers to create its centre

channel — with its own amplifier and carrying a different processed sound signal, to provide enhanced vocal precision for crystal clear conversations in movies, TV programmes and news.

Soft dome tweeters



Premium soft dome tweeters provide ultra-clear, distortion-free high frequency sound. Producing pure high pitches with wider dispersion, Philips Fidelio B8's twin side tweeters are angled at 45 degrees to send sound sideways, enlarging the soundstage of high frequencies. With the combination of front positioned drivers, angled tweeters and Ambisound, B8 delivers vast, wide sound effects.

Dolby Surround

The Dolby Surround upmixer brings new life to traditional channel-based surround soundtracks by upmixing native 2.0, 5.1 and 7.1 content to the Dolby Atmos® experience. Unlike previous wideband upmixing technologies, which operate in time domain, the Dolby Surround upmixer, operating in frequency domain, steers frequency bands individually, producing surround sound with precisely located audio elements and a spacious ambience. So you can always enjoy an immersive 3D listening experience, even without a Dolby Atmos® soundtrack.

Dolby TrueHD and DTS

Go digital and get the most out of your music and movies. Dolby TrueHD and DTS Digital Surround deliver the finest superb sound, virtually indistinguishable from the studio master. Hear sound the way the movie's sound engineers intended you to. Dolby TrueHD and DTS Digital Surround enhance entertainment for incredible home cinema sound.



SkyQuake soundbar speaker

5.1.2 CH wireless subwoofer Dolby Atmos®, Ambisound technology, Bluetooth® aptX, AAC and NFC

Specifications

Sound

- Sound Enhancement: Ambisound, Smart Sound, Movie, Music, Voice, Treble and Bass Control, Audio sync, Auto Volume Leveller
- Sound System: Dolby Atmos®, Dolby True HD, Dolby Digital Plus, Dolby Digital, Dolby Surround, DTS Digital Surround
- Subwoofer output power: 220 W
- Speaker output power: 180W (20W x 9)
- Total Power RMS @ 10% THD: 400 W

Loudspeakers

- Subwoofer freq range: 40 - 190 Hz
- Subwoofer driver: 1 x 8" woofer
- Subwoofer type: Wireless subwoofer, Bass reflex system
- Subwoofer impedance: 3 ohm
- Drivers per Soundbar: Total 18 drivers
- Low layer speakers: 2 drivers (Centre channel), 2 drivers (Front L/R), 2 drivers (Surround L/R), 2 soft dome tweeters(Surround)
- Up-firing speakers: L:2drivers+3soft dome tweeters, R:2drivers+3soft dome tweeters
- Soundbar freq range: 190–20k Hz
- Soundbar impedance: 8 ohm

Connectivity

- Integrated Connections: NFC, Bluetooth
- Rear Connections: HDMI IN 1, HDMI IN 2, HDMI 1.4 output (ARC), Digital optical in, Digital coaxial in, Audio-in 3.5 mm jack, USB audio (5 V, 500 mA DC)
- Wireless connection: Bluetooth APT-X and AAC

Outer Carton

- EAN: 48 95185 62344 3
- Length: 112.6 cm
- Number of consumer packages: 1
- Width: 29.9 cm
- Gross weight: 17.1 kg
- Height: 47.9 cm
- Net weight: 12.55 kg
- Tare weight: 4.55 kg

Convenience

- EasyLink (HDMI-CEC): Audio Return Channel, Remote Control-Passthrough, Automatic audio

input mapping

- HDMI Features: Support 4K passthrough (30 fps), Audio Return Channel (ARC), Content Type
- Digital clock display
- USB Playback: Audio (MP3)

Power

- Standby power consumption: <0.5 W
- Subwoofer Power supply: 220–240 V AC, 50/60 Hz
- Main unit power supply: DC 19V, 4.73A, 100–240 V AC, 50/60 Hz

Packaging dimensions

- Height: 47 cm
- Packaging type: Carton
- Type of shelf placement: Laying
- Width: 112 cm
- Depth: 29.5 cm
- Number of products included: 1
- EAN: 48 95185 62344 3
- Gross weight: 16.2 kg
- Net weight: 12.55 kg
- Tare weight: 3.65 kg

Product dimensions

- Height: 5.2 cm
- Width: 105.8 cm
- Depth: 12 cm
- Weight: 12.08 kg

Accessories

- Included accessories: Remote Control, 2 x AAA Batteries, AC-DC adapter for soundbar, AC power cord (x2), HDMI cable, USB adapter, Wall mount brackets (x2), Wall mount paper guide, Quick start guide, Safety and Legal Leaflet, Trademarks Sheet, World Wide Warranty leaflet

Design

- Wall mountable

Dimensions

- Main Unit (W x H x D): 1058 x 52 x 120 (7.2" x 3.2" x 3.4") mm
- Subwoofer (W x H x D): 240 x 510 x 302 (7.2" x 3.2" x 3.4") mm

Issue date 2024-04-18

© 2024 Koninklijke Philips N.V.
All Rights reserved.

Version: 13.0.11

Specifications are subject to change without notice.
Trademarks are the property of Koninklijke Philips N.V.
or their respective owners.

EAN: 48 95229 11233 9

www.philips.com

