

Always there to help you

Register your product and get support at
www.philips.com/support



HTD3520G

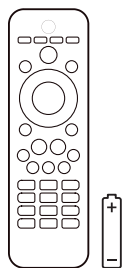


Quick start guide

PHILIPS



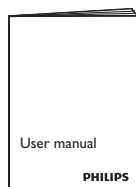
Before using your product, read all accompanying safety information



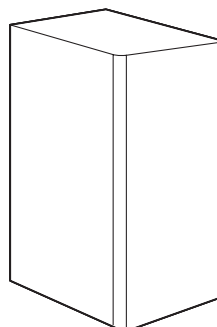
HDMI



FM antenna

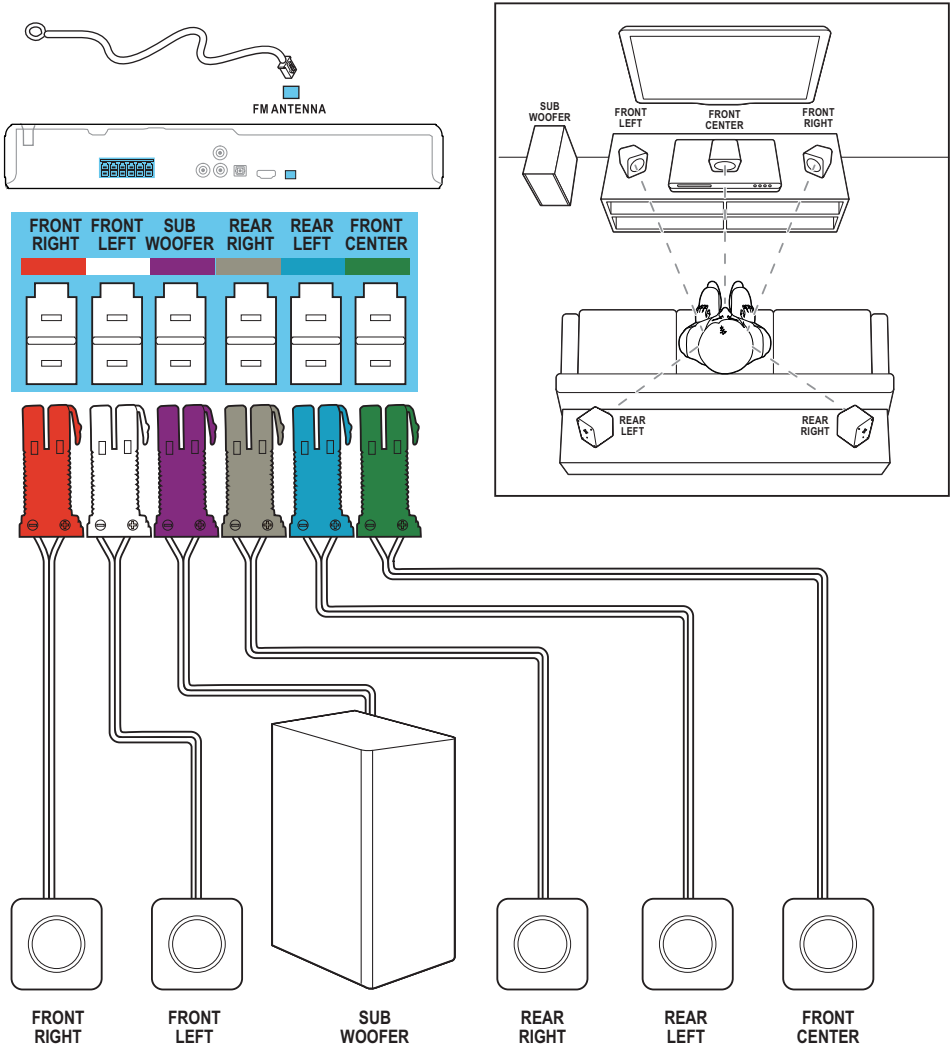


5x



1

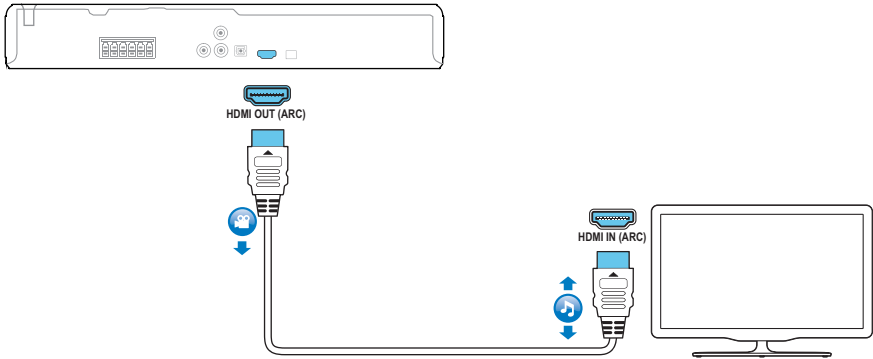
Connect and position the home theater



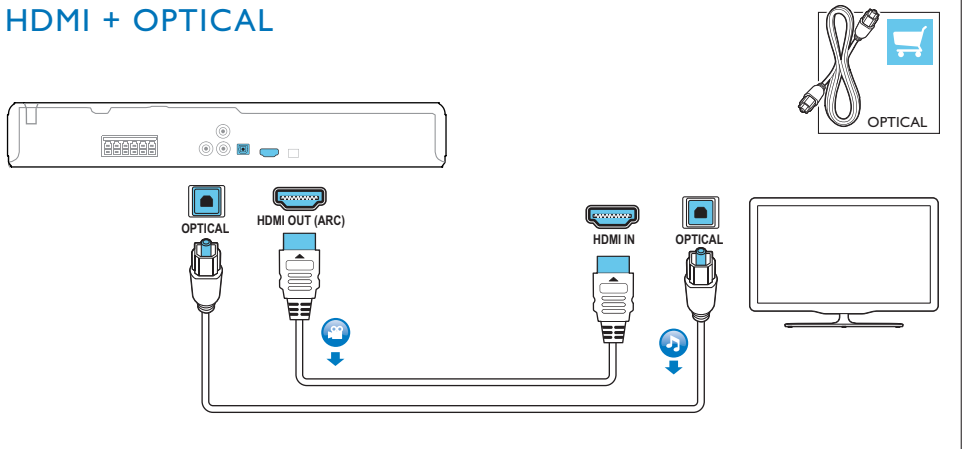
2

Connect to TV in one of these ways

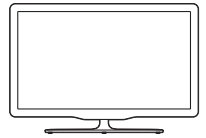
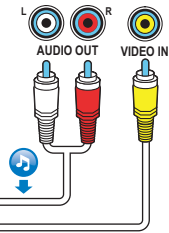
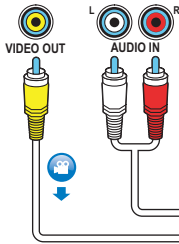
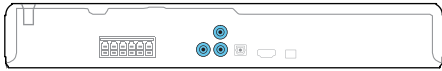
HDMI ARC



HDMI + OPTICAL



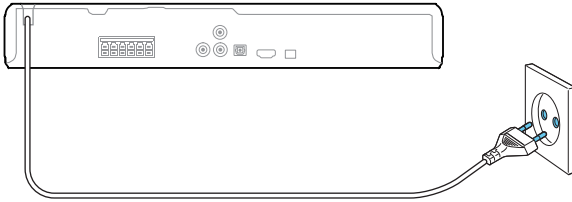
VIDEO + AUDIO L/R



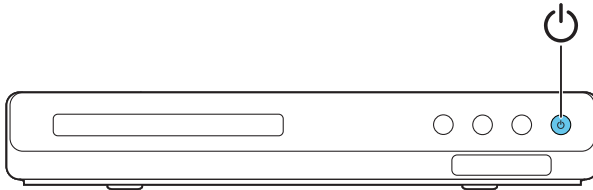
3

Switch on the home theater

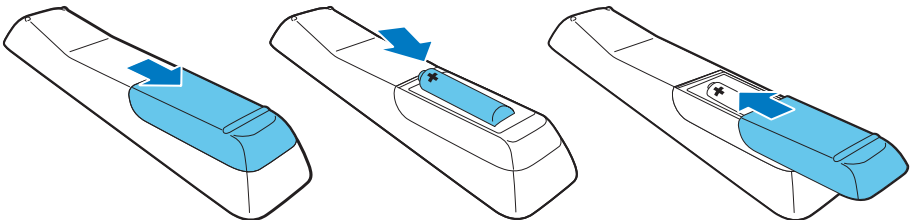
1



2

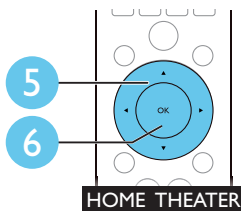
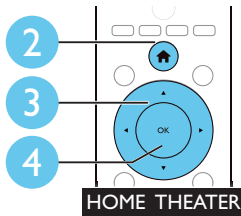
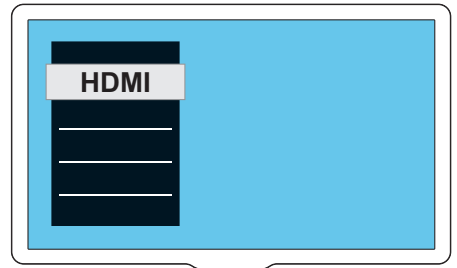
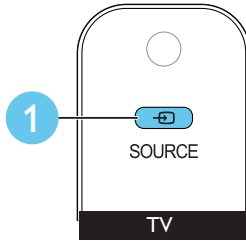


3



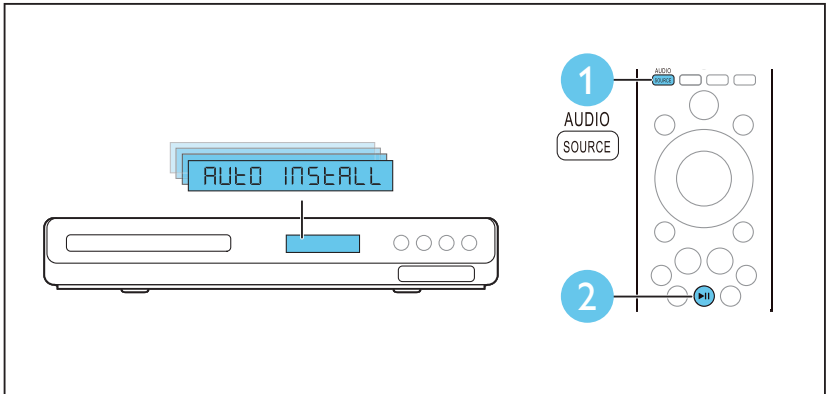
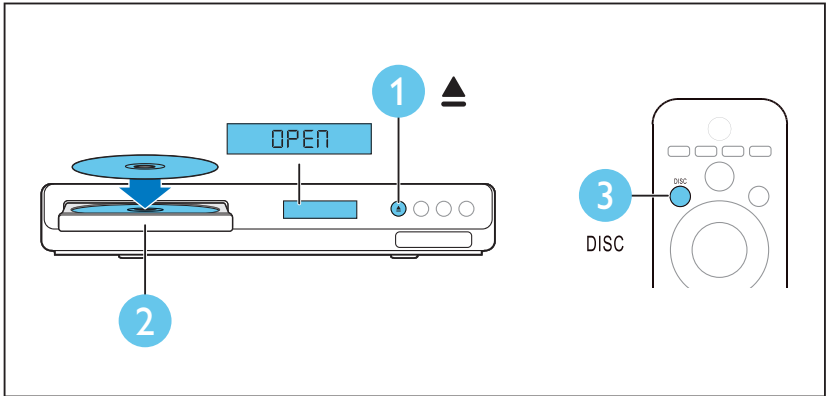
4

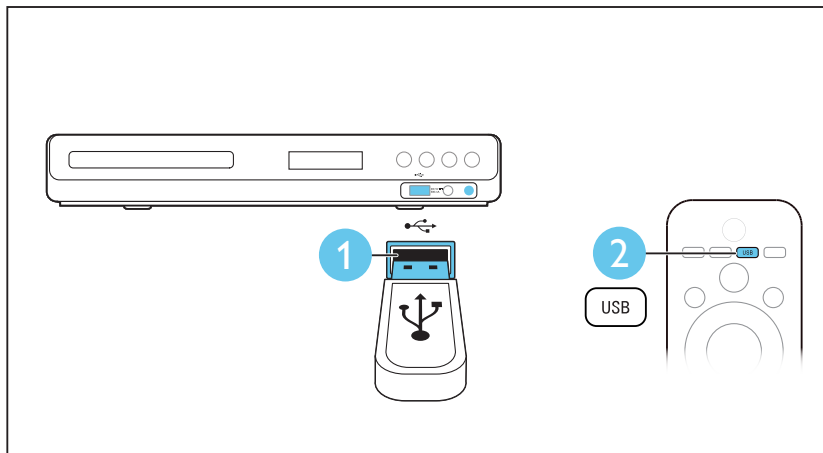
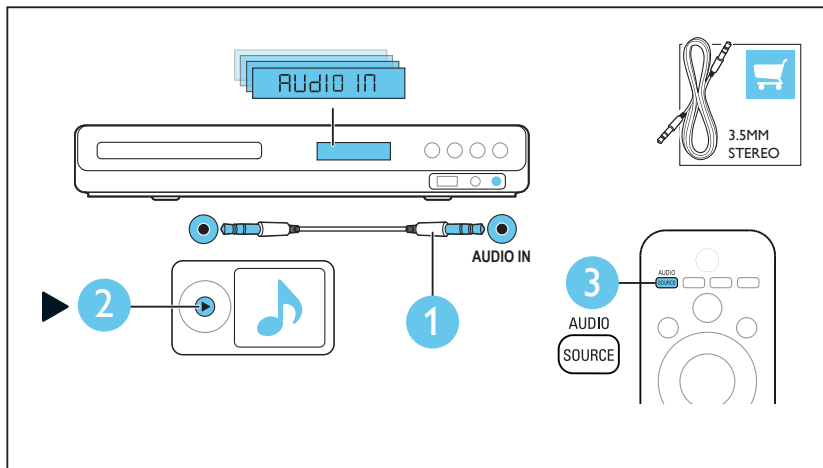
Complete the first time setup



5

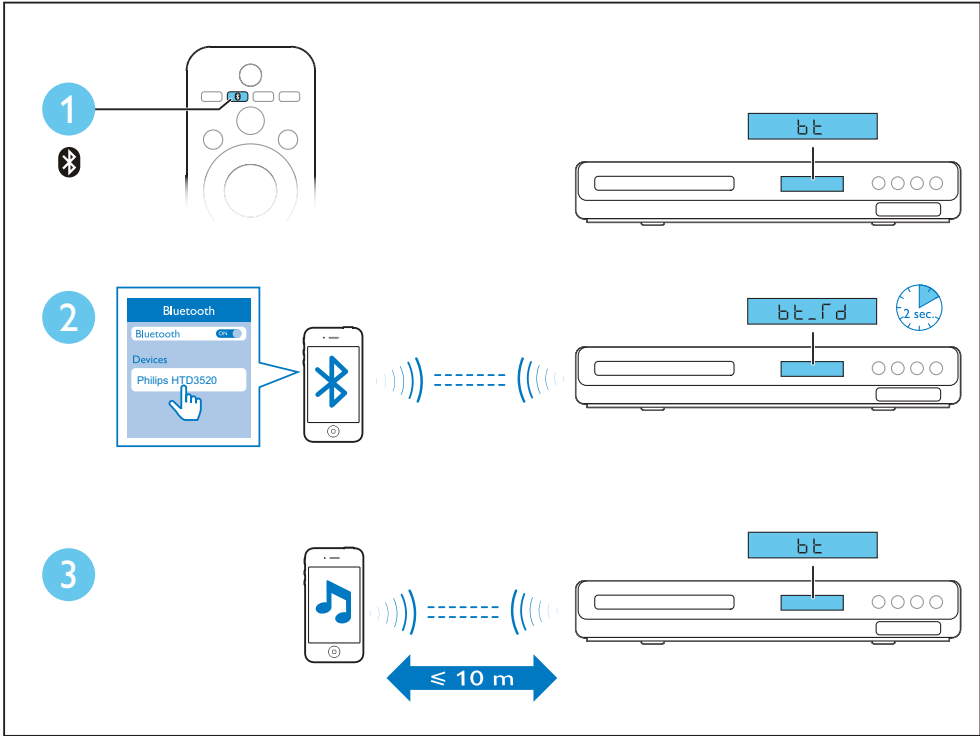
Use your home theater





7

Play audio through Bluetooth





For more information about using this product, visit www.philips.com/support



www.philips.com/support



Specifications are subject to change without notice
© 2014 Koninklijke Philips N.V. All rights reserved.
Trademarks are the property of Koninklijke Philips N.V. or their respective owners.

HTD3520G_94_QSG_V1.0

