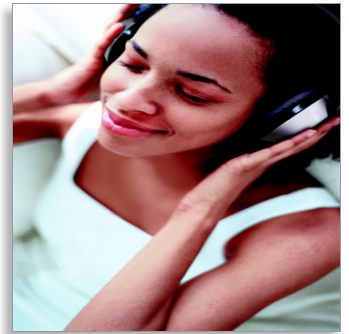




Philips
Wireless hi-fi headphones

Charging dock
FM transmission



SHC8525

Superb wireless music

Freedom to enjoy music around your home. HiFi sound reproduction, this stereo headphone is the ultimate in personal convenience.

You'll forget you're wearing them!

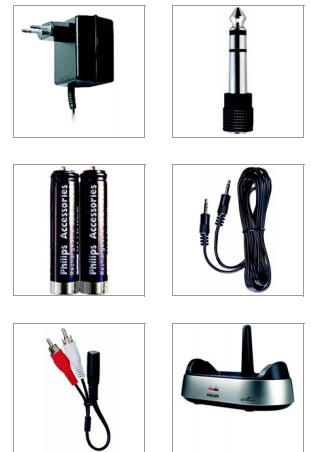
- 3-way adjustment for a better fit and bass performance
- Pre-formed ear-cushions ensure a comfortable fit

The perfect wireless listening experience

- The whole ear is covered to optimize sound quality
- 40mm speaker driver delivers sound without distortion

Always ready to go

- FM Wireless transmission for freedom of movement
- Choose from 3 channels to minimize interference
- Energizing docking station stores and re-charges receiver



PHILIPS

Specifications

Sound

- Acoustic system: closed
- Frequency response: 9 - 21 000 Hz
- Magnet type: Neodymium
- Sensitivity: 100 dB
- Speaker diameter: 40 mm
- Signal/noise ratio: 70 dB

Tuner/Reception/Transmission

- Pilot tone frequency: 19
- Effective range: 100 m
- Carrier frequency range: 863.0 - 865.0 MHz
- Channel separation: >30 dB
- Modulation: FM
- Number of channel: 3

Convenience

- Automatic power off
- Battery charging indicator
- Operating time: +/- 15 hours
- Low battery indicator
- Double PLL

Power

- Power supply headphone: 2 x 1.5 V NiMH R03/AAA
- Power supply transmitter: AC/DC adapter 12V/200mA

Outer Carton

- EAN: 87 10895 95786 1
- Number of consumer packagings: 3
- Gross weight: 4.78 kg
- Outer carton (L x W x H): 40.05 x 35 x 25.15 cm
- Nett weight: 3.09 kg
- Tare weight: 1.69 kg

Packaging dimensions

- EAN: 87 10895 95783 0
- Number of products included: 1
- Packaging type: Carton
- Packaging dimensions (W x H x D): 23.1 x 30.5 x 12.4 cm
- Gross weight: 1.35 kg
- Nett weight: 1.03 kg
- Tare weight: 0.32 kg

Highlights

3-way adjustable ear shells

Enjoy a comfortable fit and experience better bass performance thanks to the three-way adjustable ear shells that fit naturally around your ears.

Ergonomic design earcushions

The ergonomic three-dimensional earcushion shape evenly distributes the load for a better and more comfortable fit.

Full size design

Full-size earshells of these Philips headphones not only cover your whole ear for better sound quality, but also provide space for a larger, higher performance driver.

40 mm speaker driver

The 40 mm speaker driver is made of a composite mylar material for a highly sensitive yet powerful element that delivers sound without audible distortion.

FM Wireless transmission

With high frequency FM wireless transmission, which can even pass through walls, you can even listen to your music when you're in another room.

3 transmission channels

With a choice of three transmission channels, your listening pleasure is assured because you can easily switch to the one with the best reception.

Energizing docking station

The docking station is the most convenient way to store your receiver when not in use. At the same time, it will recharge your receiver unit and have it ready for use at any moment.

