

Register your product and get support at
www.philips.com/welcome

MCM770



EN	User manual	3
DE	Benutzerhandbuch	25
ES	Manual del usuario	48
FR	Mode d'emploi	72

DA	Brugervejledning	97
IT	Manuale utente	120
NL	Gebruiksaanwijzing	145
SV	Användarhandbok	169

PHILIPS

Contents

1 Important	4
Safety	4
Notice	6
2 Your Micro Hi-Fi System	8
Introduction	8
What's in the box	8
Overview of the main unit	9
Overview of the remote control	10
3 Get started	12
Connect speakers	12
Connect FM antenna	12
Connect power	12
Prepare the remote control	13
Set clock	13
Turn on	13
Switch to standby mode	13
4 Play disc/USB	15
Play from disc	15
Play from USB	15
5 Control play	16
Skip to a track	16
Pause/resume play	16
Search within a track	16
Display play information	16
Repeat play	16
Random play	16
Program tracks	16
Scan all tracks	17
6 Adjust volume level and sound effect	18
Adjust volume level	18
Select a preset sound effect	18
Enhance bass	18
Select automatic loudness control	18
Mute sound	18
7 Tune to FM radio stations	19
Program radio stations automatically	19
Program radio stations manually	19
Tune to a preset radio station	19
Show RDS information	19
Set RDS clock	20
8 Use more of your audio system	21
Set the alarm timer	21
Set the sleep timer	21
Connect other devices	21
Listen through other devices	21
Listen to other devices	21
9 Product information	22
Specifications	22
Amplifier	22
Disc	22
Tuner (FM)	22
Speakers	22
General information	22
USB playability information	22
Supported MP3 disc formats	23
RDS program types	23
10 Troubleshooting	24

1 Important

Safety

Know these safety symbols



This 'bolt of lightning' indicates uninsulated material within your unit may cause an electrical shock. For the safety of everyone in your household, please do not remove product covering.

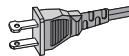
The 'exclamation point' calls attention to features for which you should read the enclosed literature closely to prevent operating and maintenance problems.

WARNING: To reduce the risk of fire or electric shock, this apparatus should not be exposed to rain or moisture and objects filled with liquids, such as vases, should not be placed on this apparatus.

CAUTION: To prevent electric shock, match wide blade of plug to wide slot, fully insert.

- ① Read these instructions.
- ② Keep these instructions.
- ③ Heed all warnings.
- ④ Follow all instructions.
- ⑤ Do not use this apparatus near water.
- ⑥ Clean only with dry cloth.

- ⑦ Do not block any ventilation openings. Install in accordance with the manufacturer's instructions.
- ⑧ Do not install near any heat sources such as radiators, heat registers, stoves, or other apparatus (including amplifiers) that produce heat.
- ⑨ For countries with a polarized mains, do not defeat the safety purpose of the polarized or grounding-type plug. A polarized plug has two blades with one wider than the other. A grounding type plug has two blades and a third grounding prong. The wide blade or the third prong are provided for your safety. If the provided plug does not fit into your outlet, consult an electrician for replacement of the obsolete outlet. **Caution:** To prevent electric shock, match the wide blade of the plug to the wide slot, fully insert.



- ⑩ Protect the power cord from being walked on or pinched, particularly at plugs, convenience receptacles, and the point where they exit from the apparatus.
- ⑪ Only use attachments/accessories specified by the manufacturer.
- ⑫ Use only with the cart, stand, tripod, bracket, or table specified by the manufacturer or sold with the apparatus. When a cart is used, use caution when moving the cart/apparatus combination to avoid injury from tip-over.



- ⑬ Unplug this apparatus during lightning storms or when unused for long periods of time.
- ⑭ Refer all servicing to qualified service personnel. Servicing is required when the apparatus has been damaged in any way, such as power-supply cord or plug is damaged, liquid has been spilled or objects have fallen into the apparatus, the apparatus has been exposed to rain or moisture, does not operate normally, or has been dropped.
- ⑮ **Battery usage CAUTION** – To prevent battery leakage which may result in bodily injury, property damage, or damage to the unit:
- Install all batteries correctly, + and - as marked on the unit.
 - Do not mix batteries (old and new or carbon and alkaline, etc.).
 - Remove batteries when the unit is not used for a long time.
- ⑯ Apparatus shall not be exposed to dripping or splashing.
- ⑰ Do not place any sources of danger on the apparatus (e.g. liquid filled objects, lighted candles).
- ⑱ This product may contain lead and mercury. Disposal of these materials may be regulated due to environmental considerations. For disposal or recycling information, please contact your local authorities or the Electronic Industries Alliance: www.eiae.org.

How to connect a plug

The wires in the mains lead are coloured with the following code: blue = neutral (N), brown = live (L).

As these colours may not correspond with the colour markings identifying the terminals in your plug, proceed as follows:

- Connect the blue wire to the terminal marked N or coloured black.

- Connect the brown wire to the terminal marked L or coloured red.
- Do not connect either wire to the earth terminal in the plug, marked E (or e) or coloured green (or green and yellow). Before replacing the plug cover, make certain that the cord grip is clamped over the sheath of the lead - not simply over the two wires.

Mains plug

This apparatus is fitted with an approved 13 Amp plug. To change a fuse in this type of plug proceed as follows:

- ① Remove fuse cover and fuse.
- ② Fix new fuse which should be a BS13625 Amp, A.S.T.A. or BSI approved type.

- ③ Refit the fuse cover.

If the fitted plug is not suitable for your socket outlets, it should be cut off and an appropriate plug fitted in its place.

If the mains plug contains a fuse, this should have a value of 5 Amp. If a plug without a fuse is used, the fuse at the distribution board should not be greater than 5 Amp.

The severed plug must be disposed off to avoid a possible shock hazard should it be inserted into a 13 Amp socket elsewhere.



Warning

- Never remove the casing of this audio system.
- Never lubricate any part of this audio system.
- Place this audio system on a flat, hard and stable surface.
- Never place this audio system on other electrical equipment.
- Only use this audio system indoors. Keep this audio system away from water, moisture and liquid-filled objects.
- Keep this audio system away from direct sunlight, naked flames or heat.
- Never look into the laser beam inside the audio system.

Norge

Typeskilt finnes på apparatens bakside.

Observer: Nettbryteren er sekundert innkopleet.

Den innebygde nettdelen er derfor ikke fraktopleet nettet så lenge apparatet er tilsluttet nettkontakten.

For å redusere faren for brann eller elektrisk støt, skal apparatet, ikke utsettes for regn eller fuktighet.

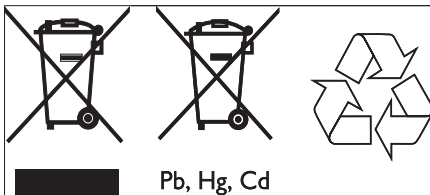
Notice

Any changes or modifications made to this device that are not expressly approved by Philips Consumer Electronics may void the user's authority to operate the equipment.



This product complies with the radio interference requirements of the European Community.

This product complies with the requirements of the following directives and guidelines: 73/23/EEC + 89/336/EEC + 93/68/EEC



Information for Users on Collection and Disposal of Old Equipment and used Batteries

These symbols on the products, packaging, and/or accompanying documents mean that used electrical and electronic products and batteries should not be mixed with general household waste. For proper treatment, recovery and recycling of old products and used batteries, please take them to applicable collection points,

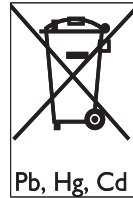
in accordance with your national legislation and the Directives 2002/96/EC and 2006/66/EC. By disposing of these products and batteries correctly, you will help to save valuable resources and prevent any potential negative effects on human health and the environment which could otherwise arise from inappropriate waste handling.

For more information about collection and recycling of old products and batteries, please contact your local municipality, your waste disposal service or the point of sale where you purchased the items.

[Information on Disposal in other Countries outside the European Union]

These symbols are only valid in the European Union. If you wish to discard these items, please contact your local authorities or dealer and ask for the correct method of disposal.

Note for the battery symbol:



This symbol might be used in combination with a chemical symbol. In this case it complies with the requirement set by the Directive for the chemical involved.

Environmental information

All redundant packing material has been omitted. We have done our utmost to make the packaging easily separable into mono materials. Please observe the local regulations regarding the disposal of packing materials.

Recording and playback of material may require consent. See Copyright Act 1956 and The Performer's Protection Acts 1958 to 1972.



Windows Media and the Windows logo are trademarks, or registered trademarks of Microsoft Corporation in the United States and/or other countries.

2 Your Micro Hi-Fi System

Congratulations on your purchase, and welcome to Philips! To fully benefit from the support that Philips offers, register your product at www.Philips.com/welcome.

Introduction

With this audio system, you can enjoy music from audio discs and USB devices directly or listen to FM radio stations.

The audio system offers you multiple sound effect settings that enrich sound with Digital Sound Control (DSC), Dynamic Bass Boost (DBB) and bass/treble enhancement (loudness). The audio system supports the following media formats:

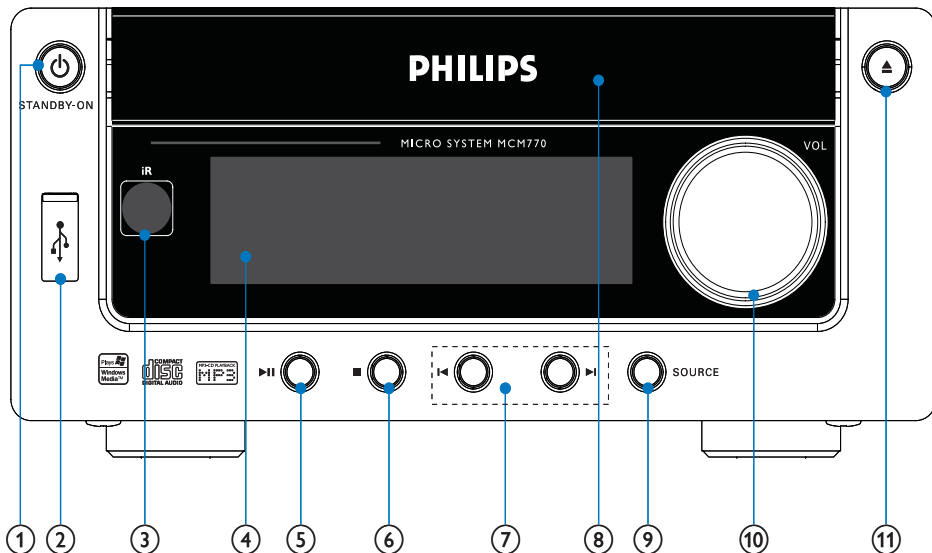


What's in the box

Check and identify the contents of your package:

- Main unit
- Loudspeaker boxes x 2
- Speaker cables x 2
- AC adaptor
- Remote control with battery
- FM wire antenna

Overview of the main unit



① STANDBY-ON

- Turn on the audio system, switch to standby mode, or switch to Eco Power Standby.

②

- Socket for a USB mass storage device.

③ IR sensor

④ Display panel

- Show current status.

⑤

- Start or pause play.

⑥

- Stop play or erase a program.

⑦

- Skip to the previous/next track.
- Select a preset radio station.

⑧ Disc tray

- Load a CD/MP3 disc.

⑨ SOURCE

- Select a source: CD/MP3, USB, AUX or TUNER (FM).

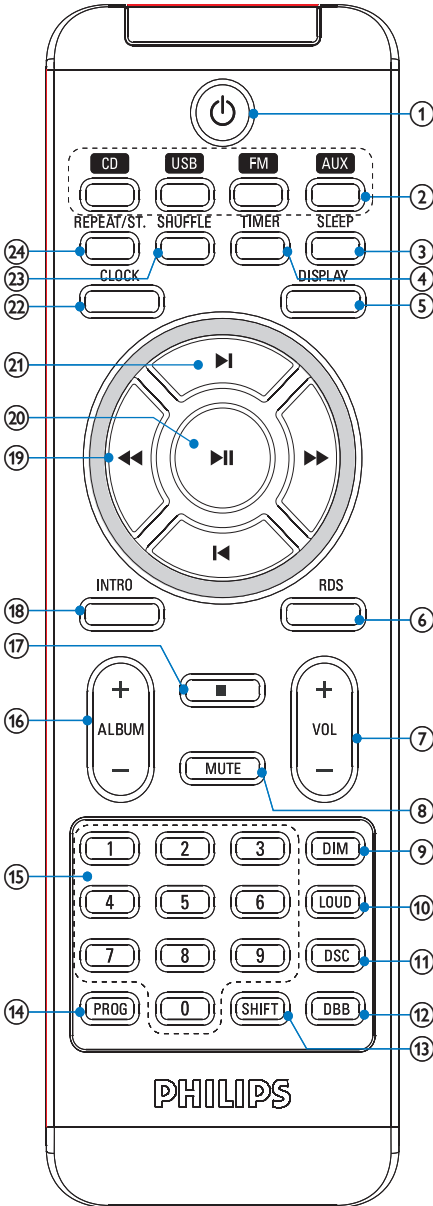
⑩ VOL

- Adjust volume.
- Adjust time.

⑪

- Eject or close the disc tray.

Overview of the remote control



- ① **⏻**
 - Turn on the audio system, switch to standby mode, or switch to Eco Power Standby.
- ② **Source selection keys (CD, USB, FM, AUX)**
 - Select a source: CD/MP3, USB, AUX or TUNER (FM).
- ③ **SLEEP**
 - Set the sleep timer.
- ④ **TIMER**
 - Set the alarm timer.
- ⑤ **DISPLAY**
 - During disc/USB play, select various information display modes.
- ⑥ **RDS**
 - Display available RDS (Radio Data System) information of an FM radio station.
- ⑦ **VOL + / -**
 - Adjust volume.
 - Adjust time.
- ⑧ **MUTE**
 - Mute volume.
- ⑨ **DIM**
 - Adjust brightness of the display panel.
- ⑩ **LOUD**
 - Enable or disable automatic loudness adjustment for bass and treble enhancement.
- ⑪ **DSC**
 - Select a preset sound setting: ROCK, JAZZ, POP, CLASSIC or FLAT.
- ⑫ **DBB**
 - Enable or disable bass enhancement.
- ⑬ **SHIFT**
 - Enter a 2 or 3-digit number (used together with the numeric keypad).

- ⑭ **PROG**
 - Program tracks.
 - Program radio stations.
- ⑮ **Numeric keypad**
 - Select a track from a disc directly.
- ⑯ **ALBUM +/-**
 - Skip to the previous/next album.
- ⑰ **■**
 - Stop play or erase a program.
- ⑱ **INTRO**
 - Scan all tracks.
- ⑲ **◀◀▶▶**
 - Fast reverse or fast forward within a track or disc.
 - Tune to a radio station.
- ⑳ **▶▶**
 - Start or pause play.
- ㉑ **◀▶**
 - Skip to the previous/next track.
 - Select a preset radio station.
- ㉒ **CLOCK**
 - Set the clock.
- ㉓ **SHUFFLE**
 - Play tracks randomly.
- ㉔ **REPEAT/ST.**
 - Select a repeat play mode.
 - Select stereo or mono sound output for an FM radio station.

3 Get started

! Caution

- Use the controls only as stated in this user manual.

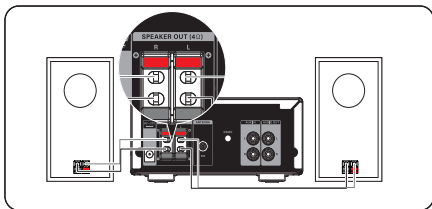
Always follow the instructions in this chapter in sequence.

If you contact Philips, you will be asked for the model and serial numbers. Find the model number and serial number of this audio system at the back or the bottom of your audio system. Write these numbers here:

Model No. _____

Serial No. _____

Connect speakers



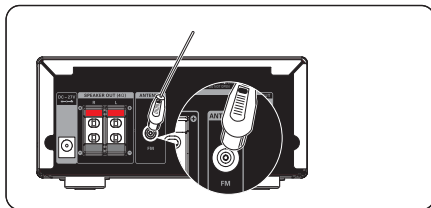
≡ Note

- Insert the stripped portion of each speaker wire into the socket completely.
- For optimal sound, use the supplied speakers only.
- Connect only speakers with impedance that is the same or higher than the supplied speakers. Refer to the Specifications section of this manual.

- 1 Insert fully the red end of the speaker cable into the red (+) socket on the main unit.
- 2 Insert fully the silver end of the speaker cable into the black (-) socket on the main unit.

- 3 Repeat steps 1-2 for the other speaker cable.
- 4 Repeat steps 1 to 3 to connect the other speaker.

Connect FM antenna



* Tip

- For optimal reception, fully extend and adjust the position of the antenna.
- For better FM stereo reception, connect an outdoor FM antenna to the **FM ANTENNA** jack.
- The audio system does not support MW radio reception.

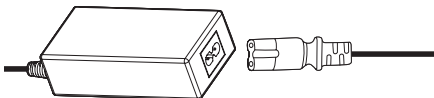
- 1 Connect the supplied FM antenna to the **FM ANTENNA** jack on the main unit.

Connect power

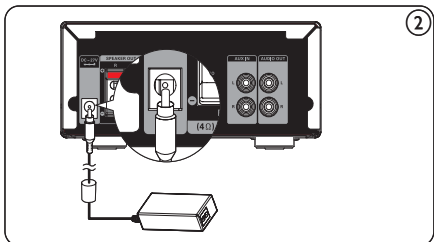
! Caution

- Risk of product damage! Ensure that the power supply voltage corresponds to the voltage printed on the back or the underside of the audio system.
- Risk of electric shock! When you unplug the AC adaptor, always pull the plug from the socket. Never pull the cord.
- Before connecting the AC adaptor, ensure you have completed all other connections.

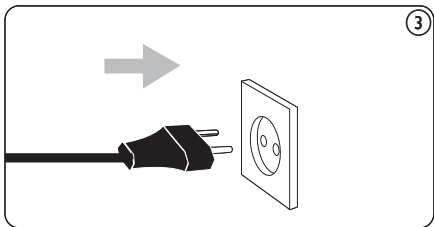
- 1 Prepare the AC adaptor.



- 2 Connect one end to the **DC IN** socket on the main unit.



- 3 Connect the other end to the wall outlet.



Prepare the remote control

! Caution

- Risk of explosion! Keep batteries away from heat, sunshine or fire. Never discard batteries in fire.

For first-time use:

- 1 Remove the protective tab to activate the remote control battery.

To replace the remote control batteries:

- 1 Open the battery compartment.
- 2 Insert one lithium CR2025 battery with correct polarity (+/-) as indicated.
- 3 Close the battery compartment.

≡ Note

- Before pressing any function button on the remote control, first select the correct source with the remote control instead of the main unit.
- If you are not going to use the remote control for a long time, remove the battery.

Set clock

- 1 In the standby mode, press and hold **CLOCK** to enter the clock setting mode.
 - ↳ The hour digits are displayed and begin to blink.
 - ↳ If the hour digits are not displayed, press and hold **⊖** for more than 2 seconds to switch to standby mode, then repeat step 1.
- 2 Press **+VOL -** to set the hour.
 - ↳ The minute digits are displayed and begin to blink.
- 3 Press **+VOL -** to set the minute.
- 4 Press **CLOCK** to confirm the clock setting.

Turn on

- 1 Press **⊖**.
 - ↳ The audio system switches to the last selected source.

Switch to standby mode

- 1 Press **⊖** to switch the audio system to Eco Power Standby mode.

- ↳ The backlight on the display panel turns off.
- ↳ The blue Eco Power indicator turns on.

To switch the audio system to standby mode:

- 1** In Eco Power Standby mode, press and hold Φ for more than 3 seconds.
 - ↳ The clock (if set) appears on the display panel.
 - ↳ The blue Eco Power indicator turns off.

4 Play disc/USB

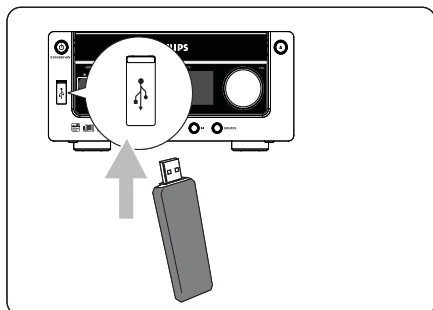
5 Press ◀/▶ to select a file.

6 Press ▶|| to start play.

Play from disc

- 1 Press **CD** to select the CD source.
- 2 Press ▲ on the front panel.
↳ The disc tray opens.
- 3 Place a disc onto the tray and press .
↳ Ensure that the label is facing upwards.
- 4 Play starts automatically.
 - If play does not start, press ◀/▶ to select a track and then press ▶||.

Play from USB



Note

- Ensure that the USB device contains playable music. See USB playability information (see 'USB playability information' on page 22) for supported formats.

- 1 Flip down the cover marked ➔ on the front panel.
- 2 Insert the USB plug of a USB device into the exposed socket.
- 3 Press **USB** to select the USB source.
↳ The total number of tracks is displayed.
- 4 Press **ALBUM +/-** to select a folder.

5 Control play

Skip to a track

For CD:

- 1 Press **⏮/⏭** to select another track.
 - To select a track directly, you can also press a key on the numerical keypad.



Tip

- To enter a 2 or 3-digit number, press **SHIFT**, then enter the number.

For MP3 disc and USB:

- 1 Press **ALBUM +/-** to select an album or folder.
- 2 Press **⏮/⏭** to select a track or file.

Pause/resume play

- 1 During play, press **▶||** to pause/resume play.

Search within a track

- 1 During play, press and hold **◀◀▶▶**.
- 2 Release to resume normal play.

Display play information

For CD:

- 1 Press **DISPLAY** repeatedly to see the following information.
 - ↳ The track number and elapsed play time of the current track
 - ↳ The track number and remaining play time of the current track

- ↳ The track number and total remaining play time

For MP3 disc:

- 1 Press **DISPLAY** to display ID3 information (if available).

Repeat play

- 1 During play, press **REPEAT/ST.** repeatedly to select:
 - ↳ **[REPEAT]** (repeat): play the current track repeatedly.
 - ↳ **[REPEAT ALL]** (repeat all): play all tracks repeatedly.
 - ↳ **[REPEAT]** (repeat) and **[ALB]** (album) (for MP3 and USB only): play the current album repeatedly.
- 2 To return to normal play, press **REPEAT/ST.** until the selected function is no longer displayed.

Random play

- 1 Press **SHUFFLE**.
 - ↳ All tracks are played randomly.
- 2 To return to normal play, press **SHUFFLE** again.



Tip

- The repeat and shuffle functions cannot be activated at the same time.

Program tracks

You can program a maximum of 20 tracks.

- 1 Press **PROGRAM** to activate the programming mode.
 - ↳ A track number flashes.

- 2 Press **◀▶** to select a track number to program, then press **PROGRAM** to confirm.
 - To select a track in an MP3 disc or USB device, first press **ALBUM +/-** to select the album where the track is located.
 - **[P-X]** is displayed, where "X" is the next position in the program.
 - 3 Repeat steps 2 to 3 to select and store all tracks to program.
 - 4 Press **PROGRAM** to complete.
↳ **[PROG]** (program) is displayed.
 - 5 Press **▶||** to play the programmed tracks.
 - To erase the program, press **PROGRAM**.
-

Scan all tracks

- 1 Press **INTRO** to play the first 10 seconds of each track one by one.
 - To stop scan, press **INTRO** again.

6 Adjust volume level and sound effect



Note

- You cannot use the DSC, DBB and Loudness features at the same time.

- 1 During play, press **LOUD** to enable/disable automatic loudness control.

Mute sound

- 1 During play, press **MUTE** to mute/unmute sound.

Adjust volume level

- 1 During play, press **VOL + / -** to increase/decrease the volume level.

Select a preset sound effect

- 1 During play, press **DSC** repeatedly to select:
 - **[ROCK]** (rock)
 - **[JAZZ]** (jazz)
 - **[POP]** (pop)
 - **[CLASSIC]** (classic)
 - **[FLAT]** (flat).

Enhance bass

- 1 During play, press **DBB** to enable/disable bass enhancement.

Select automatic loudness control

The loudness feature enables the system to increase the treble and bass sound effect at low volume automatically (the higher the volume, the lower the treble and bass increase).

7 Tune to FM radio stations

- 1 Ensure that you have connected and fully extended the supplied FM antenna.
 - 2 Press **FM**.
 - 3 Press and hold **◀▶**.
 - 4 When **[SEARCH]** (search) is displayed, release the button.
 - ↳ The FM tuner tunes to a station with strong reception automatically.
 - 5 Repeat steps 3-4 to tune to more stations.
- To tune to a weak station:**
Press **◀▶** repeatedly until you find optimal reception.

Program radio stations automatically

Note

- You can program a maximum of 20 preset radio stations.

- 1 Press **◀▶** to select a preset number to start programming.
- 2 Press and hold **◀▶** for 2 seconds to activate automatic programming.
 - ↳ **[AUTO]** (auto) appears.
 - ↳ All available stations are programmed in the order of waveband reception strength.
 - ↳ The last programmed radio station is played automatically.

Program radio stations manually

Note

- You can program a maximum of 20 preset radio stations.

- 1 Tune to a radio station.
- 2 Press **PROGRAM** to activate programming.
- 3 Press **◀▶** to allocate a number from 1 to 20 to this radio station, then press **PROGRAM** to confirm.
 - ↳ The preset number and the frequency of the preset station are displayed.
- 4 Repeat the above steps to program other stations.

Note

- To overwrite a programmed station, store another station in its place.

Tune to a preset radio station

- 1 Press **◀▶** to select a preset number that you want.

Tip

- You can also use the numerical keypad to select a preset station directly.
- To enter a 2 or 3-digit number, press **SHIFT**, then enter the number.

Show RDS information

RDS (Radio Data System) is a service that allows FM stations to show additional information. If you tune to a RDS station, a RDS icon and the station name are displayed.

When automatic programming is used, RDS stations are programmed first.

- 1 Tune to a RDS station.
- 2 Press **RDS** repeatedly to scroll through the following information (if available):
 - ↳ Station name
 - ↳ Program type such as **[NEWS]** (news), **[SPORT]** (sport), **[POP M]** (pop music)...
 - ↳ Radio text messages
 - ↳ Frequency

Note

- See RDS program types (see 'RDS program types' on page 23) for detailed definition of each possible RDS program type.

Set RDS clock

You can use time signal broadcast together with the RDS signal to set the clock of the audio system automatically.

- 1 Tune to a RDS radio station that transmits time signals.
 - ↳ The audio system reads the RDS time and sets the clock automatically.

Note

- The accuracy of the transmitted time depends on the RDS station that transmits the time signal.

8 Use more of your audio system

Set the alarm timer

- 1 Ensure that you have set the clock correctly.
- 2 In standby mode, press and hold **TIMER**.
 - ↳ The hour digits are displayed and begin to blink.
- 3 Press **+VOL -** to set the hour:
 - ↳ The minute digits are displayed and begin to blink.
- 4 Press **+VOL -** to set the minute.
- 5 Press **TIMER** to confirm.
- 6 To activate the wake-up timer, press **+VOL -** to select **[ON]** (on).
 - ↳ A clock icon appears on the display.
 - ↳ The audio system turns on automatically at the set time and switches to the last selected source.
 - To deactivate the alarm timer, select **[OFF]** (off) at step 6.

Set the sleep timer

- 1 When the audio system is turned on, press **SLEEP** repeatedly to select a set period of time (in minutes).
 - ↳ The audio system turns off automatically after the set period of time.

Connect other devices

! Caution

- Before connecting any other device to the audio system, ensure that you have disconnected the power adaptor of the audio system.

≡ Note

- If the device only provides a mono jack, connect it to the left jack on the audio system. Alternatively, you can also use a "single to double" cinch cable.

Listen through other devices

You can listen to this audio system through other devices.

- 1 Connect the audio output sockets to the **AUDIO OUT (L/R)** sockets on this audio system.

Listen to other devices

You can listen to other devices through this audio system.

- 1 Connect the audio output sockets to the **AUX IN (L/R)** sockets on this audio system.

9 Product information

Note

- Product information is subject to change without prior notice.

Specifications

Amplifier

Rated Output Power	2X30W RMS
Frequency Response	50 - 20000 Hz, ± 3 dB
Signal to Noise Ratio	>65dB
Aux Input	0.5 V RMS 20kohm

Disc

Laser Type	Semiconductor
Disc Diameter	12cm/8cm
Support Disc	CD-DA, CD-R, CD-RW, MP3-CD, WMA-CD
Audio DAC	24Bits / 44.1kHz
Total Harmonic Distortion	<1%
Frequency Response	50Hz - 20kHz (44.1kHz)
S/N Ratio	>65dBA

Tuner (FM)

Tuning Range	87.5 - 108MHz
Tuning grid	50KHz
Sensitivity	
- Mono, 26dB S/N Ratio	<22 dBf
- Stereo, 46dB S/N Ratio	>43 dBf
Search Selectivity	>28dBf
Total Harmonic Distortion	<3%
Signal to Noise Ratio	>55dB

Speakers

Speaker Impedance	4ohm
Speaker Driver	3.5" woofer+0.8" tweeter
Sensitivity	>82dB/m/W

General information

AC power	220 - 230V, 50Hz/ 60Hz
Operation Power Consumption	20W
Standby Power Consumption	<4W
Eco Standby Power Consumption	<1W
Audio Output	1Vpp \pm 0.1Vpp3.5kohm
USB Direct	Version 2.0
Dimensions	
- Main Unit (W x H x D)	160 x 75 x 280mm
- Speaker Box (W x H x D)	130 x 180 x 205mm
Weight	
- With Packing	6.6 kg
- Main Unit	1.7 kg
- Speaker Box	2 x 1.95 kg

USB playability information

Compatible USB devices:

- USB flash memory (USB 2.0 or USB1.1)
- USB flash players (USB 2.0 or USB1.1)
- memory cards (requires an additional card reader to work with this audio system)

Supported formats:

- USB or memory file format FAT12, FAT16, FAT32 (sector size: 512 bytes)
- MP3 bit rate (data rate): 32-320 Kbps and variable bit rate
- WMA v9 or earlier
- Directory nesting up to a maximum of 8 levels
- Number of albums/ folders: maximum 99
- Number of tracks/titles: maximum 999
- ID3 tag v2.0 or later
- File name in Unicode UTF8 (maximum length: 128 bytes)

Unsupported formats:

- Empty albums: an empty album is an album that does not contain MP3/ WMA files, and is not be shown in the display.
- Unsupported file formats are skipped. For example, Word documents (.doc) or MP3 files with extension .dlf are ignored and not played.
- AAC, WAV, PCM audio files
- DRM protected WMA files (.wav, .m4a, .m4p, .mp4, .aac)
- WMA files in Lossless format

Supported MP3 disc formats

- ISO9660, Joliet
- Maximum title number: 512 (depending on file name length)
- Maximum album number: 255
- Supported sampling frequencies: 32 kHz, 44.1kHz, 48 kHz
- Supported Bit-rates: 32~256 (kbps), variable bit rates

RDS program types

NO TYPE	No RDS programme type
NEWS	News services
AFFAIRS	Politics and current affairs
INFO	Special information programs
SPORT	Sports
EDUCATE	Education and advanced training
DRAMA	Radio plays and literature
CULTURE	Culture, religion and society
SCIENCE	Science
VARIED	Entertainment programs
POP M	Pop music
ROCK M	Rock music
MOR M	Light music
LIGHT M	Light classical music
CLASSICS	Classical music
OTHER M	Special music programs
WEATHER	Weather
FINANCE	Finance
CHILDREN	Children's programs
SOCIAL	Social Affairs
RELIGION	Religion
PHONE IN	Phone In
TRAVEL	Travel
LEISURE	Leisure
JAZZ	Jazz Music
COUNTRY	Country Music
NATION M	National Music
OLDIES	Oldies Music
FOLK M	Folk Music
DOCUMENT	Documentary
TES	Alarm Test
ALARM	Alarm

10 Troubleshooting



Caution

- Never remove the casing of this audio system.

To keep the warranty valid, never try to repair the system yourself.

If you encounter problems when using this audio system, check the following points before requesting service. If the problem remains unsolved, go to the Philips web site (www.Philips.com/support). When you contact Philips, ensure that your audio system is nearby and the model number and serial number are available (see 'Get started' on page 12).

No power

- Ensure that the AC adaptor of the audio system is connected properly.
- Ensure that there is power at the AC outlet.
- As a power-saving feature, the system switches off automatically 15 minutes after track play reaches the end and no control is operated.

No sound or poor sound

- Adjust the volume.
- Disconnect the headphones.
- Check that the speakers are connected correctly.
- Check if the stripped speaker wires are clamped.

Left and right sound outputs reversed

Check the speaker connections and location.

No response from the audio system

- Disconnect and reconnect the AC power plug, then turn on the system again.
- As a power-saving feature, the system switches off automatically 15 minutes after track play reaches the end and no control is operated.

Remote control does not work

- Before pressing any function button, first select the correct source with the remote control instead of the main unit.
- Reduce the distance between the remote control and the audio system.
- Insert the battery with its polarities (+/- signs) aligned as indicated.
- Replace the battery.
- Aim the remote control directly at the sensor on the front of the audio system.

No disc detected

- Insert a disc.
- Check if the disc is inserted upside down.
- Wait until the moisture condensation at the lens has cleared.
- Replace or clean the disc.
- Use a finalized CD or correct format disc.

Cannot display some files in USB device

- The number of folders or files in the USB device has exceeded a certain limit. This phenomenon is not a malfunction.
- The formats of these files are not supported.

USB device not supported

The USB device is incompatible with the audio system. Try another one.

Poor radio reception

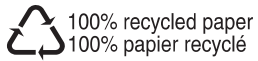
- Increase the distance between the audio system and your TV or VCR.
- Fully extend the FM antenna.
- Connect an outdoor FM antenna instead.

Timer does not work

- Set the clock correctly.
- Switch on the timer.

Clock/timer setting erased

- Power has been interrupted or the power cord has been disconnected.
- Reset the clock/timer.



100% recycled paper
100% papier recyclé