

Always there to help you

Register your product and get support at
www.philips.com/support

AZ1890T



User manual

PHILIPS

Contents

1 Important	2
Know these safety symbols	2
Hearing safety	2
Risk of swallowing batteries	3

2 Your CD Soundmachine	4
Introduction	4
What's in the box	4
Overview of the main unit	5
Overview of the remote control	6

3 Get started	8
Prepare the remote control	8
Power supply	8
Turn on	9
Select a source	9

4 Play from a disc or USB	10
Play a disc	10
Play from a USB device	10
Control play	10
Repeat and random play	11
Program tracks	11

5 Play from Bluetooth-enabled devices	12
Connect a device	12
Play from Bluetooth device	12
Disconnect the Bluetooth-enabled device	13
Connect another Bluetooth-enabled device	13
Reconnect the Bluetooth device	13

6 Adjust volume and sound effect	14
Adjust volume	14
Mute sound	14
Enhance bass	14

7 Listen to radio	15
Tune to FM radio stations	15
Program FM radio stations automatically	15
Program FM radio stations manually	15
Select a preset radio station	15

8 Other features	16
Listen to an external audio device	16
Charge mobile devices	16
Listen through a headphone	16

9 Product information	17
Specifications	17

10 Troubleshooting	19
General	19
About Bluetooth device	19

11 Notice	20
Care of the environment	20
Trademark notice	20

1 Important

Know these safety symbols



This 'bolt of lightning' indicates uninsulated material within your unit may cause an electrical shock. For the safety of everyone in your household, please do not remove product covering.

The 'exclamation point' calls attention to features for which you should read the enclosed literature closely to prevent operating and maintenance problems.

WARNING: To reduce the risk of fire or electric shock, this apparatus should not be exposed to rain or moisture and objects filled with liquids, such as vases, should not be placed on this apparatus.

CAUTION: To prevent electric shock, match wide blade of plug to wide slot, fully insert.

Warning

- Never remove the casing of this product.
- Never lubricate any part of this product.
- Never place this product on other electrical equipment.
- Keep this product away from direct sunlight, naked flames or heat.
- Never look into the laser beam inside the product.
- Make sure that you always have easy access to the power cord, plug or adaptor to disconnect the product from the power.

- Make sure that there is enough free space around the product for ventilation.
- Only use attachments or accessories specified by the manufacturer.
- Use only power supplies listed in the user manual.

- Battery usage **CAUTION** – To prevent battery leakage which may result in bodily injury, property damage, or damage to the product:
 - Install all batteries correctly, + and - as marked on the product.
 - Do not mix batteries (old and new or carbon and alkaline, etc.).
 - Batteries (packed or installed) shall not be exposed to excessive heat such as sunshine, fire or the like.
 - Remove batteries when the product is not used for a long time.
- The product shall not be exposed to dripping or splashing.
- Do not place any sources of danger on the product (e.g. liquid filled objects, lighted candles).
- Where the plug of the Direct Plug-in Adapter is used as the disconnect device, the disconnect device shall remain readily operable.

Caution

- Use of controls or adjustments or performance of procedures other than herein may result in hazardous laser exposure or other unsafe operation.

Hearing safety



Listen at a moderate volume.

- Using headphones at a high volume can impair your hearing. This product can produce sounds in decibel ranges that may cause hearing loss for a normal person, even for exposure less than a minute. The higher decibel ranges are offered for those that may have already experienced some hearing loss.

- Sound can be deceiving. Over time your hearing 'comfort level' adapts to higher volumes of sound. So after prolonged listening, what sounds 'normal' can actually be loud and harmful to your hearing. To guard against this, set your volume to a safe level before your hearing adapts and leave it there.

To establish a safe volume level:

- Set your volume control at a low setting.
- Slowly increase the sound until you can hear it comfortably and clearly, without distortion.

Listen for reasonable periods of time:

- Prolonged exposure to sound, even at normally 'safe' levels, can also cause hearing loss.
- Be sure to use your equipment reasonably and take appropriate breaks.

Be sure to observe the following guidelines when using your headphones.

- Listen at reasonable volumes for reasonable periods of time.
- Be careful not to adjust the volume as your hearing adapts.
- Do not turn up the volume so high that you can't hear what's around you.
- You should use caution or temporarily discontinue use in potentially hazardous situations.

- When you change the batteries, always keep all new and used batteries out of reach of children. Ensure that the battery compartment is completely secure after you replace the battery.
- If the battery compartment cannot be completely secured, discontinue use of the product. Keep out of reach of children and contact the manufacturer.



Note

- The type plate is located on the bottom of the product.

Risk of swallowing batteries

- The product or remote control may contain a button cell battery, which is possible to be swallowed. Keep the battery out of reach of children at all times! If swallowed, the battery can cause serious injury or death. Severe internal burns can occur within two hours of ingestion.
- If you suspect that a battery has been swallowed or placed inside any part of the body, seek immediate medical attention.

2 Your CD Soundmachine

Congratulations on your purchase, and welcome to Philips! To fully benefit from the support that Philips offers, register your product at www.philips.com/welcome.

Introduction

With this product, you can

- enjoy audio from discs, USB devices, your Bluetooth-enabled devices, or other external audio devices;
- listen to FM radio stations; and
- charge your mobile devices.

The product offers you Dynamic Bass Boost (DBB) to enrich sound.

The product supports the following media formats:

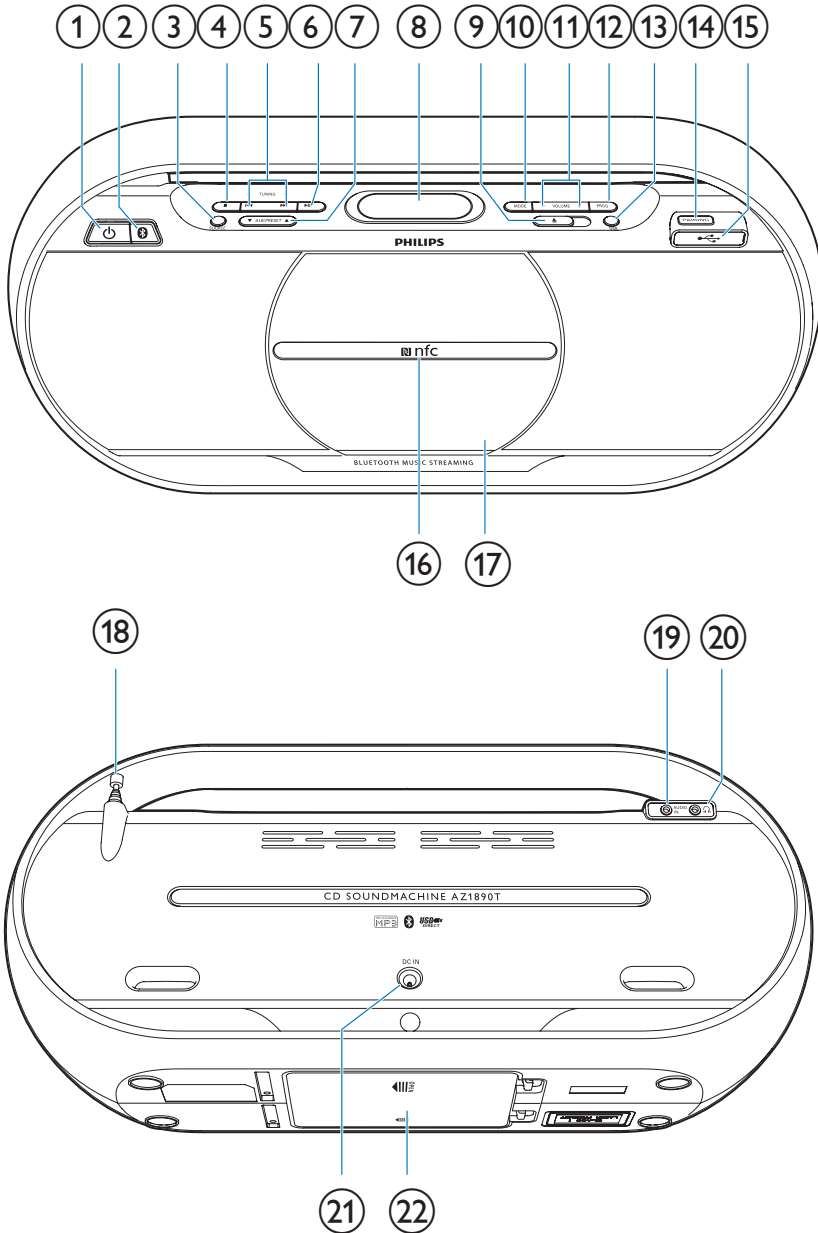


What's in the box

Check and identify the contents of your package:

- Main unit
- Remote control
- Audio-in cable
- Power adapter
- Plug converter (/55)
- Short user manual

Overview of the main unit



①

- Turn the product on or off.

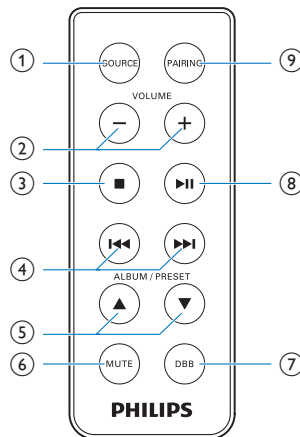
②

- LED indicator.

- ③ **SOURCE**
 - Select an audio source.
- ④ **■**
 - Stop play or erase the programmed list.
- ⑤ **TUNING +/- ◀◀ / ▶▶**
 - Skip to the previous or next track.
 - Search within a track.
 - Tune to a radio station.
- ⑥ **▶||**
 - Start or pause play.
- ⑦ **ALB/PRESET/ ▲ / ▼**
 - Skip to the previous or next album.
 - Select a preset radio station.
- ⑧ **Display panel**
 - Show current status.
- ⑨ **▲**
 - Open the disc compartment.
- ⑩ **MODE**
 - Select a play mode.
- ⑪ **VOLUME + / -**
 - Adjust volume.
- ⑫ **PROG**
 - Program tracks.
 - Program radio stations.
- ⑬ **DBB**
 - Turn dynamic bass enhancement on or off.
- ⑭ **PAIRING**
 - Disconnect Bluetooth connection.
 - Enter Bluetooth pairing mode.
- ⑮ **↔**
 - Connect a USB mass storage device.
 - Charge your mobile devices.
- ⑯ **NFC**
 - Connect a device with NFC feature through Bluetooth.
- ⑰ **CD door**

- ⑱ **FM antenna**
 - Improve FM radio reception.
- ⑲ **AUDIO IN**
 - Connect an external audio device.
- ⑳ **🎧**
 - Connect a headphone.
- ㉑ **DC IN**
 - Connect AC power.
- ㉒ **Battery compartment**

Overview of the remote control



- ① **SOURCE**
 - Select an audio source.
- ② **VOLUME + / -**
 - Adjust volume.
- ③ **■**
 - Stop play or erase the programmed list.
- ④ **◀◀ / ▶▶**
 - Skip to the previous or next track.
 - Search within a track.
 - Tune to a radio station.

- ⑤ **ALBUM/PRESET ▲ / ▼**
 - Skip to the previous or next album.
 - Select a preset radio station.
- ⑥ **MUTE**
 - Mute or resume sound.
- ⑦ **DBB**
 - Turn dynamic bass enhancement on or off.
- ⑧ **▶ ||**
 - Start or pause play.
- ⑨ **PAIRING**
 - Disconnect Bluetooth connection.
 - Enter Bluetooth pairing mode.

3 Get started

Always follow the instructions in this chapter in sequence.

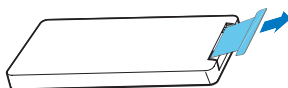
Prepare the remote control

Note

- Battery contains chemical substances, so it should be disposed of properly.

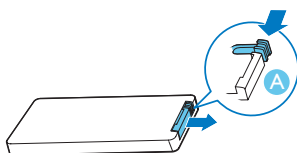
For first-time use:

Remove the protective tab to activate the remote control battery.



To replace the remote control battery:

- 1 Hold the latch towards the direction (A), and then pull the battery tray out.



- 2 Insert one CR2025 battery with correct polarity (+/-) as indicated.



- 3 Close the battery tray.

Power supply

Either AC power or battery can be used as power supply of this product.

Option 1: Battery power

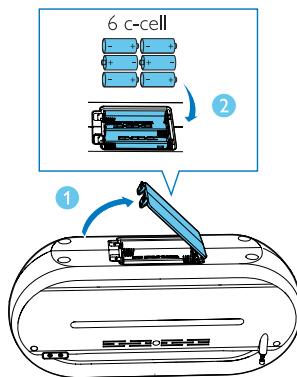
! Caution

- Risk of explosion! Keep batteries away from heat, sunshine or fire. Never discard batteries in fire.
- Batteries contain chemical substances, so they should be disposed of properly.

≡ Note

- Batteries are not supplied with the accessories.

- 1 Open the battery compartment.
- 2 Insert 6 batteries (type: c-cell) with correct polarity (+/-) as indicated.
- 3 Close the battery compartment.



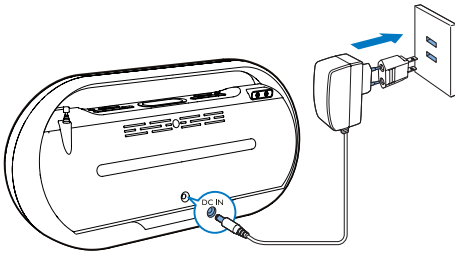
Option 2: AC power

! Warning

- Risk of product damage! Make sure that the power supply voltage corresponds to the voltage printed on the back or the underside of the product.
- Risk of electric shock! When you disconnect the AC power, always pull the plug from the socket. Never pull the cord.

Connect the power adaptor to:

- the **DC IN** socket on the unit.
- the wall outlet.



Turn on

- Press **⏻** to turn the product on.
 - ↳ The product switches to CD source.
 - ↳ The display backlight is turned on.

Turn off

- Press **⏻** again to turn the product off.
 - ↳ The display backlight is turned off.

Switch to Eco standby mode

If there is no operation and audio playback for 15 minutes, the product switches to Eco standby mode automatically.

Select a source

Press **SOURCE** repeatedly to select a source: **CD**, **USB**, **BT** (Bluetooth), **FM tuner**, or **AUDIO IN**.

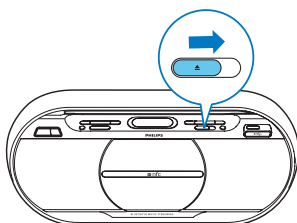
4 Play from a disc or USB

Play a disc

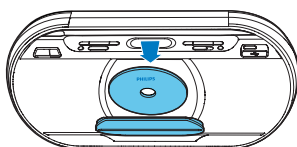
Note

- Make sure that the disc contains playable audio content.

- 1 Slide **▲** to the right to open the disc compartment.



- 2 Insert a disc with the printed side facing up, then close the disc compartment.



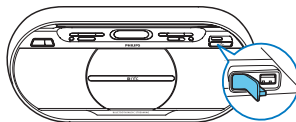
- 3 Press **SOURCE** repeatedly to select the disc source.
↳ Play starts automatically.

Play from a USB device

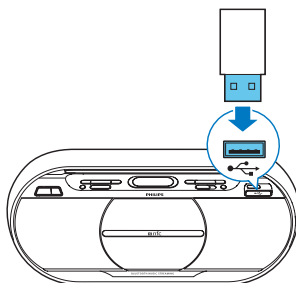
Note

- Make sure that the USB device contains playable audio content.

- 1 Flip open the cover marked **↔** on the front panel.



- 2 Insert the USB plug of a USB device into the exposed socket.




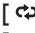

- 3 Press **SOURCE** repeatedly to select the **USB** source.
↳ Play starts automatically. If not, press **▶||**.

Control play

During play, follow the instructions below to control play.

Button	Function
⏮ / ⏭	Press to skip to the previous or next track. Press and hold to fast forward or fast reverse the track during playback, then release to resume play.
▲ / ▼	Press to skip to the previous or next album.
▶ 	Press to start or pause play.
■	Press to stop play.

Repeat and random play

- 1 Press **MODE** on the main unit repeatedly to select a play mode.
 - []: Play the current track repeatedly.
 - []: Play all tracks repeatedly.
 - []: Play all tracks randomly.
- 2 To return to normal play mode, press **MODE** repeatedly until the repeat and shuffle icons disappear.



Note

- Shuffle play cannot be selected when you play the programmed tracks.

Program tracks

In CD or USB mode, you can program a maximum of 20 tracks.

- 1 When playback is stopped, press **PROG** to activate the program mode.
 - ↳ [**PROG**] (program) blinks on the display.
- 2 For MP3 tracks, press **▲** / **▼** to select an album.
- 3 Press **◀◀** / **▶▶** to select a track number, then press **PROG** to confirm.
- 4 Repeat steps 2-3 to program more tracks.
- 5 Press **▶||** to play the programmed tracks.
 - ↳ During play, [**PROG**] (program) is displayed.
 - To erase the program, press **■** twice.

5 Play from Bluetooth-enabled devices

With this product, you can listen to audio from Bluetooth-enabled devices.

Connect a device

Note

- Make sure that your Bluetooth device is compatible with this product.
- Before pairing a device with this product, read its user manual for Bluetooth compatibility.
- The product can memorize a maximum of four paired devices. The fifth paired device will replace the first one.
- Make sure that Bluetooth function is enabled on your device, and your device is set as visible to all other Bluetooth devices.
- The operational range between this product and a Bluetooth device is approximately 10 meters (30 feet).
- Any obstacle between this product and a Bluetooth device can reduce the operational range.
- Keep away from any other electronic device that may cause interference.

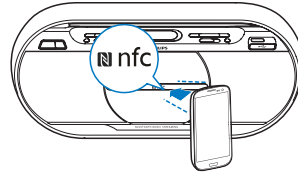
Option 1: Connect a device through NFC

Near Field Communication (NFC) is a technology that enables short-range wireless communication between various NFC compatible devices, such as mobile phones and IC tags.

If your Bluetooth device supports NFC, you can connect it with this product easily.

- 1 Press **SOURCE** repeatedly to select **[BT]** source.
↳ The Bluetooth indicator blinks.
- 2 Enable the NFC feature on your Bluetooth device (refer to the user manual of the device).

- 3 Touch the NFC tag (on the CD door) with the NFC area of your Bluetooth device.



- 4 On your Bluetooth device, accept the pairing request with "AZ1890T". If necessary, input "0000" as the pairing password.
- 5 Follow the on-screen instructions to complete the pairing and connection.
↳ After successful pairing and connection, the product beeps twice, and the LED indicator turns solid blue.

Option 2: Connect a device manually

- 1 Press **SOURCE** repeatedly to select **[BT]** source.
- 2 On your Bluetooth device, enable Bluetooth and search for Bluetooth devices (refer to the user manual of the device).
- 3 When **[AZ1890T]** is displayed on your device, select it to start pairing and connection. If necessary, enter default password "0000".
↳ After successful pairing and connection, the product beeps twice, and the LED indicator turns solid blue.
 - If you fail to find **[AZ1890T]** on your device for pairing, press and hold **PAIRING** until you hear beep sound, and then try again.

Play from Bluetooth device

After successful Bluetooth connection, play audio on the Bluetooth device.

- ↳ Audio streams from your Bluetooth device to the product.

Disconnect the Bluetooth-enabled device

- Press and hold **PAIRING** for 2 seconds;
- Disable Bluetooth on your device; or
- Move the device beyond the communication range.

Connect another Bluetooth-enabled device

- 1 Press and hold **PAIRING** for 2 seconds to enter pairing mode.
- 2 Connect another device.

Reconnect the Bluetooth device

- Next time you turn on the product, the product will reconnect the last connected device automatically; or
- On your Bluetooth device, select "**AZ1890T**" on your Bluetooth menu to start reconnection.

6 Adjust volume and sound effect

Adjust volume

During play, press **VOLUME + / -** to increase or decrease volume.

Mute sound

During play, press **MUTE** to mute or resume sound.

Enhance bass

During play, press **DBB** to turn dynamic bass enhancement on or off.

↳ If DBB is activated, **[DBB]** is displayed.

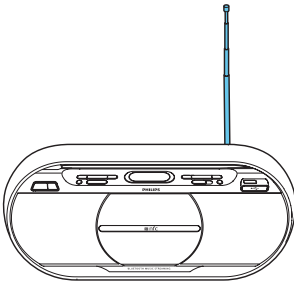
7 Listen to radio

Tune to FM radio stations

Note

- For better reception, adjust the position of the antenna.

- 1 Fully extend the FM antenna.



- 2 Press **SOURCE** repeatedly to select FM tuner source.
- 3 Press and hold **◀◀ / ▶▶** for 2 seconds.
 - ↳ **[SEARCH]** (search) is displayed.
 - ↳ The product tunes to a station with strong reception automatically.
- 4 Repeat step 3 to tune to more stations.
 - To tune to a station manually, press **◀◀ / ▶▶** repeatedly until you find better reception.

Program FM radio stations automatically

Note

- You can program a maximum of 20 preset radio stations.

In FM tuner mode, press and hold **PROG** for 2 seconds to activate automatic programming.

- ↳ **[AUTO]** (auto) is displayed.
- ↳ All available radio stations are stored automatically, then the first stored radio station is broadcast.

Program FM radio stations manually

Note

- To overwrite a programmed radio station, store another station in its place.

- 1 Tune to a radio station.
- 2 Press **PROG** to activate programming.
 - ↳ **[PROG]** blinks on the display.
- 3 Press **▲ / ▼** to allocate a number to this radio station, and then press **PROG** to confirm.
 - ↳ The preset number and the frequency of this radio station are displayed.
- 4 Repeat steps 1-3 to program more stations.

Select a preset radio station

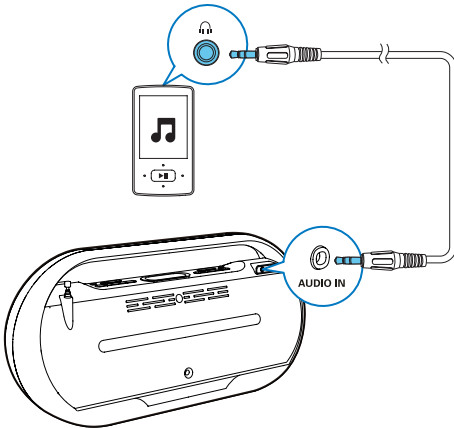
In tuner mode, press **▲ / ▼** to select a preset station.

8 Other features

Listen to an external audio device

With this product, you can listen to an external audio device such as an MP3 player:

- 1 Connect an audio input cable with a 3.5 mm connector on both ends to
 - the **AUDIO IN** socket on this product,
 - and
 - the headphone socket on an external device.

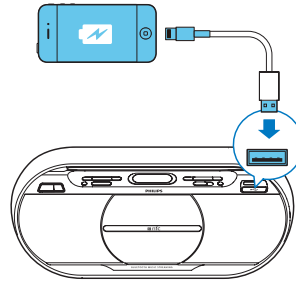


- 2 Press **SOURCE** repeatedly to select the **AUDIO IN** source.
- 3 Play audio on the external device (refer to its user manual).

Charge mobile devices

With this product, you can charge your mobile devices through the micro USB socket.

- 1 Connect this product to AC power supply.
- 2 Connect to your mobile device with a USB cable (not supplied).
 - ↳ Once the device is recognized, the charging starts.



Note

- You cannot charge in Eco standby mode.

Listen through a headphone

Plug a headphone into the  socket on the product.

9 Product information

Note

- Product information is subject to change without prior notice.

Specifications

Amplifier

Max Output Power	Total 10 W
Frequency Response	40 Hz -20 kHz
Signal to Noise Ratio	> 65 dBA
Input Sensitivity (AUX IN)	600 mV/47 kΩ

Disc

Laser Type	Semiconductor
Disc Diameter	12cm/8cm
Support Disc	CD-DA,CD-R,CD-RW,MP3-CD
Audio DAC	24Bits/44.1kHz
Total Harmonic Distortion	<0.8% (1 kHz)
Frequency Response	20 Hz - 20 kHz
S/N Ratio	>65 dBA

Tuner

Tuning Range	FM: 87.5 - 108 MHz
Tuning Grid	FM: 50 KHz
- Mono, 26dB S/N Ratio	<22 dBf
Search Selectivity	<28 dBf
Total Harmonic Distortion	< 2%
Signal to Noise Ratio	>55 dBA

USB

USB Direct	V 1.1
USB charging	5 V \equiv 0.5 A

Speakers

Sensitivity	>85 dB/W/M
-------------	------------

Bluetooth

Bluetooth Version	V3.0
Supported Profiles	A2DP,AVRCP
Range	10 m (Free space)
Bluetooth Frequency Band	2.4GHz ~ 2.48GHz ISM Band

General information

Power Supply	
- AC Power (power adapter)	Brand name: PHILIPS; Model: OH-1028A0901600U-VDE; Input: 100-240V~, 50/60 Hz, 800 mA MAX; Output: 9V \equiv 1.6 A;
- Battery	6 x c-cells
Operation Power Consumption	10 W
Eco Standby Power Consumption	< 0.5 W
Headphone Output	2 X 15 mW 32 ohm
Dimensions	
- Main Unit (W x H x D)	451 X 214 X 132 mm
Weight	
- Main Unit	2.2 kg

USB playability information

Compatible USB devices:

- USB flash memory (USB V2.0 or USB V1.1)
- USB flash players (USB V2.0 or USB V1.1)
- memory cards (requires an additional card reader to work with this unit)

Supported formats:

- USB or memory file format: FAT16, FAT32 (sector size: 512 bytes)
- MP3 bit rate (data rate): 32-192 Kbps and variable bit rate
- Directory nesting up to a maximum of 8 levels
- Number of albums/ folders: maximum 99
- Number of tracks/titles: maximum 999
- File name in Unicode UTF8 (maximum length: 16 bytes)

Unsupported formats:

- Empty albums: an empty album is an album that does not contain MP3/WMA files, and is not be shown in the display.
- Unsupported file formats are skipped. For example, Word documents (.doc) or MP3 files with extension .dlf are ignored and not played.
- AAC, WAV, PCM audio files
- DRM protected WMA files (.wav, .m4a, .m4p, .mp4, .aac)
- WMA files in Lossless format

Supported MP3 disc formats

- ISO9660, Joliet
- Maximum title number: 999 (depending on file name length)
- Maximum album number: 99
- Supported sampling frequencies: 32 kHz, 44.1 kHz, 48 kHz
- Supported Bit-rates: 32~320 (kbps), variable bit rates

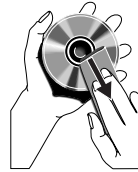
Maintenance

Clean the cabinet

- Use a soft cloth slightly moistened with a mild detergent solution. Do not use a solution containing alcohol, spirits, ammonia or abrasives.

Clean discs

- When a disc becomes dirty, clean it with a cleaning cloth. Wipe the disc from the centre out.



- Do not use solvents such as benzene, thinner, commercially available cleaners, or antistatic spray intended for analogue records.

Clean the disc lens

- After prolonged use, dirt or dust may accumulate at the disc lens. To ensure good play quality, clean the disc lens with Phillips CD lens cleaner or any commercially available cleaner. Follow the instructions supplied with cleaner.

10 Troubleshooting



Warning

- Never remove the casing of this device.

To keep the warranty valid, never try to repair the system yourself.

If you encounter problems when using this device, check the following points before requesting service. If the problem remains unsolved, go to the Philips Web page (www.philips.com/support). When you contact Philips, make sure that the device is nearby and the model number and serial number are available.

General

No power

- Ensure that the AC power plug of the unit is connected properly.
- Ensure that there is power at the AC outlet.
- Insert the batteries with their polarities (+/- signs) aligned as indicated.
- Replace the battery.

No sound or poor sound

- Adjust volume on the product.
- Adjust volume on the connected device.

No response from the unit

- Reinstall the batteries and turn on the unit again.
- Disconnect and reconnect the AC power plug, then turn on the unit again.

Remote control does not work

- Before pressing any function button, first select the correct source with the remote control instead of the main unit.
- Reduce the distance between the remote control and the unit.
- Insert the battery with its polarities (+/- signs) aligned as indicated.
- Replace the battery.
- Aim the remote control directly at the sensor on the front of the unit.

No disc detected

- Insert a disc.
- Check if the disc is inserted upside down.
- Wait until the moisture condensation at the lens has cleared.
- Replace or clean the disc.
- Use a finalized CD or correct format disc.

Poor radio reception

- Increase the distance between the product and other electrical appliances.
- Fully extend and adjust the position of the FM antenna.

Cannot display some files in USB device

- The number of folders or files in the USB device has exceeded a certain limit. This phenomenon is not a malfunction.
- The formats of these files are not supported.

USB device not supported

- The USB device is incompatible with the unit. Try another one.

About Bluetooth device

The audio quality is poor after connection with a Bluetooth-enabled device.

- The Bluetooth reception is poor. Move the device closer to this product or remove any obstacle between them.

Cannot connect with the device.

- The Bluetooth function of the device is not enabled. Refer to the user manual of the device for how to enable the function.
- This product is already connected with another Bluetooth-enabled device. Disconnect that device and then try again.

Fail to find [AZ1890T] on your device for pairing.

- Press and hold **PAIRING** for two seconds, and then try again.

The paired device connects and disconnects constantly.

- The Bluetooth reception is poor. Move the device closer to this product or remove any obstacle between them.
- For some devices, Bluetooth connection may be deactivated automatically as a power-saving feature. This does not indicate any malfunction of this product.

11 Notice

Any changes or modifications made to this device that are not expressly approved by Gibson Innovations may void the user's authority to operate the equipment.

Care of the environment

Disposal of your old product



Your product is designed and manufactured with high quality materials and components, which can be recycled and reused.

Do not throw away the product with the normal household waste at the end of its life, but hand it in at an official collection point or recycling. By doing this, you help to preserve the environment.

Environmental information

All unnecessary packaging has been omitted. We have tried to make the packaging easy to separate into three materials: cardboard (box), polystyrene foam (buffer) and polyethylene (bags, protective foam sheet.)

Your system consists of materials which can be recycled and reused if disassembled by a specialized company. Please observe the local regulations regarding the disposal of packaging materials, exhausted batteries and old equipment.

Trademark notice



The Bluetooth® word mark and logos are registered trademarks owned by Bluetooth SIG, Inc. and any use of such marks by Gibson Innovations Limited is under license. Other trademarks and trade names are those of their respective owners.



The N Mark is a trademark or registered trademark of NFC Forum, Inc. in the United States and in other countries.



The USB-IF Logos are trademarks of Universal Serial Bus Implementers Forum, Inc.

This apparatus includes this label:





Specifications are subject to change without notice.

2015 © Gibson Innovations Limited. All rights reserved.

This product has been manufactured by, and is sold under the responsibility of Gibson Innovations Ltd., and Gibson Innovations Ltd. is the warrantor in relation to this product.

Philips and the Philips Shield Emblem are registered trademarks of Koninklijke Philips N.V. and are used under license from Koninklijke Philips N.V.

AZ1890T_55_85_UM_V2.0

