

# Always there to help you

Register your product and get support at  
[www.philips.com/support](http://www.philips.com/support)



SW700M



## User manual

# PHILIPS



# Contents

---

<b>1 Important</b>	2
Safety	2
Notice	2

---

<b>2 Your Spotify Multiroom Speaker</b>	4
Introduction	4
What's in the box	4
What else you need	4
Overview of the main unit	5

---

<b>3 Prepare</b>	6
Download SpeakerSet Multiroom Manager to your iOS or Android device	6
Connect power and switch on	6

---

<b>4 Connect SW700M to your home Wi-Fi network</b>	8
Option 1: Set up through an iOS device	8
Option 2: Set up through an Android device	9
Option 3: Set up wireless connection to a WPS router directly	10
Option 4: Set up through a PC/Mac (advanced)	11
Rename speakers	12

---

<b>5 Play</b>	13
Enjoy Spotify music services through SW700M	13
Stream music to multiple speakers at the same time	14

---

<b>6 Other features</b>	18
Restore factory settings	18
Upgrade firmware	19

---

<b>7 Product information</b>	20
Specifications	20

---

<b>8 Troubleshooting</b>	21
--------------------------	----

---

<b>9 Appendix: Understand meanings of LED colors</b>	22
--	----

# 1 Important

## Safety

- Only use attachments/accessories specified by the manufacturer.
- Use only power supplies listed in the user manual.
- The product shall not be exposed to dripping or splashing.
- Do not place any sources of danger on the product (e.g. liquid filled objects, lighted candles).
- Where the mains plug or an appliance coupler is used as the disconnect device, the disconnect device shall remain readily operable.



### Warning

- Never remove the casing of this apparatus.
- Never lubricate any part of this apparatus.
- Never place this apparatus on other electrical equipment.
- Keep this apparatus away from direct sunlight, naked flames or heat.
- Ensure that you always have easy access to the power cord, plug or adaptor to disconnect this apparatus from the power.

Risk of overheating! Never install this apparatus in a confined space. Always leave a space of at least four inches around this apparatus for ventilation. Ensure curtains or other objects never cover the ventilation slots on this apparatus.

## Notice

# CE 0890

Hereby, WOOX Innovations declares that this product is in compliance with the essential requirements and other relevant provisions of Directive 1999/5/EC. You can find the Declaration of Conformity on [www.philips.com/support](http://www.philips.com/support).

Any changes or modifications made to this device that are not expressly approved by WOOX Innovations may void the user's authority to operate the equipment.

Philips and the Philips' Shield Emblem are registered trademarks of Koninklijke Philips N.V. and are used by WOOX Innovations Limited under license from Koninklijke Philips N.V.

Specifications are subject to change without notice. WOOX reserves the right to change products at any time without being obliged to adjust earlier supplies accordingly.

### Disposal of your old product



Your product is designed and manufactured with high quality materials and components, which can be recycled and reused.



This symbol on a product means that the product is covered by European Directive 2012/19/EU. Inform yourself about the local separate collection system for electrical and electronic products. Follow local rules and never dispose of the product with normal household waste. Correct disposal of old products helps prevent negative consequences for the environment and human health.

## Environmental information

All unnecessary packaging has been omitted. We have tried to make the packaging easy to separate into three materials: cardboard (box), polystyrene foam (buffer) and polyethylene (bags, protective foam sheet.)

Your system consists of materials which can be recycled and reused if disassembled by a specialized company. Please observe the local regulations regarding the disposal of packaging materials, exhausted batteries and old equipment.

---

## Trademark notice

iPad, iPhone, iPod, iPod classic, iPod nano and iPod touch are trademarks of Apple Inc., registered in the U.S. and other countries. Lightning is a trademark of Apple Inc. Android is a trademark of Google Inc. Use of this trademark is subject to Google permissions.

## Class II equipment symbol:



CLASS II apparatus with double insulation, and no protective earth provided.



### Note

- The type plate is located on the bottom of the apparatus.

## 2 Your Spotify Multiroom Speaker

Congratulations on your purchase, and welcome to Philips! To fully benefit from the support that Philips offers, register your product at [www.philips.com/welcome](http://www.philips.com/welcome).

If you contact Philips, you will be asked for the model and serial number of this apparatus. The model number and serial number are on the bottom of the apparatus. Write the numbers here:

Model No. \_\_\_\_\_

Serial No. \_\_\_\_\_

---

### Introduction

With this Spotify Multiroom Speaker, you can:

- stream Spotify music wirelessly via Spotify Connect with your iOS or Android device as remote control
- listen to Spotify music everywhere at your home through group play (multiple Spotify Multiroom speakers required)

---

### What's in the box

Check and identify the contents of your package:

- Spotify Multiroom Speaker
- 1 x AC power adaptor
- Printed materials

---

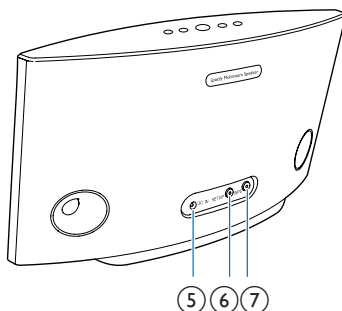
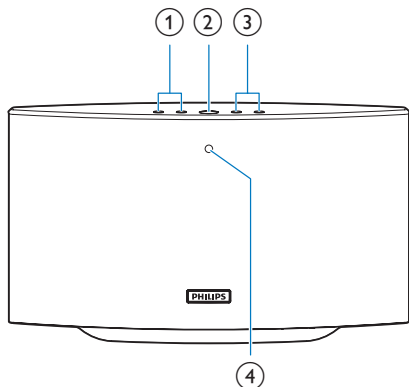
### What else you need

To stream Spotify music wirelessly to SW700M through Wi-Fi, you need:

- a certified Wi-Fi router
- an iOS or Android device, such as an iPod touch/iPhone/iPad or an Android phone or tablet
- the **SpeakerSet** and **Spotify** (with a premium account) apps available on Apple **App Store** (for iOS devices) or Google **Play Store** (for Android devices)

Your SW700M should be connected to the same local network as your iOS or Android device through the Wi-Fi router:

## Overview of the main unit



- ① **⏮ / ⏭**
  - Skip to the previous/next song.
- ② **▶ ||**
  - Start or pause music play.
- ③ **+/-**
  - Adjust volume.
- ④ **System status indicator**
  - Show the current status of the speaker.
- ⑤ **DC IN**
  - Connect the power adaptor.
- ⑥ **SETUP button/indicator**
  - Enter App-Assisted Wi-Fi Setup mode for connection of the speaker to a Wi-Fi network.
  - Show the Wi-Fi setup status.
- ⑦ **WPS button/indicator**
  - Enter WPS Setup mode for connection of the speaker to a Wi-Fi network.
  - Show the Wi-Fi setup status in WPS mode.

## 3 Prepare

Always follow the instructions in this chapter in sequence.

### Download **SpeakerSet Multiroom Manager** to your iOS or Android device

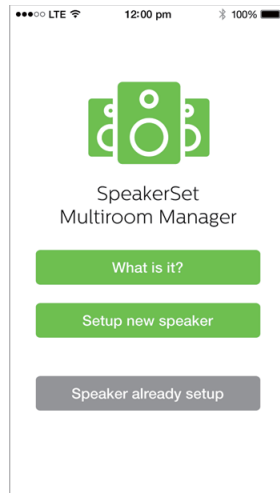
- 1 (For iPod touch/iPhone/iPad users) Install **SpeakerSet** from Apple **App Store**, and then run the app.



(For users of Android smartphones or tablets) Install **SpeakerSet** from Google **Play Store** and then run the app.



- 2 On the initial setup page, tap **Setup a new speaker**.



### Connect power and switch on

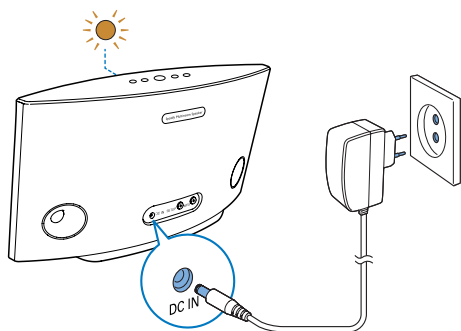


#### Caution

- Risk of product damage! Make sure that the power supply voltage matches the voltage printed on the bottom of the speaker.
  - Risk of electric shock! When you unplug the AC adaptor, always pull the plug from the socket. Never pull the cord.
  - Before you connect the AC adaptor, make sure that you have completed all the other connections.
- 
- As instructed on the app screen, connect the AC power adaptor to
    - the **DC IN** socket on the back of the speaker;
    - the wall power socket.↳ The speaker switches on automatically.



- ↳ The system status indicator on the front panel blinks amber during boot-up.
- ↳ If a Wi-Fi connection has been set up for the speaker, the system status indicator turns solid green after successful connection.



#### Tip

- The speaker enters standby mode automatically after 15 minutes of inactivity.

# 4 Connect SW700M to your home Wi-Fi network

To connect SW700M to your existing home Wi-Fi network, you need to apply your home Wi-Fi settings to SW700M in one of the following ways (depending on the type of your smart device and whether your Wi-Fi router is WPS enabled):

Devices required for speaker setup	Setup method
iOS device + Wi-Fi router	Choose option 1 (see 'Option 1: Set up through an iOS device' on page 8).
Android device + Wi-Fi router	Choose option 2 (see 'Option 2: Set up through an Android device' on page 9).
WPS Wi-Fi router	Choose option 3 (see 'Option 3: Set up wireless connection to a WPS router directly' on page 10).
PC/Mac with Wi-Fi enabled + Wi-Fi router	Choose option 4 (see 'Option 4: Set up through a PC/Mac (advanced)' on page 11).

Before connection of SW700M to your home Wi-Fi network, make sure that:

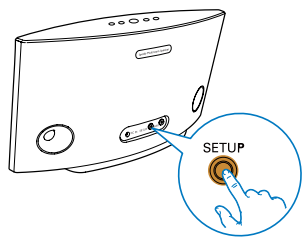
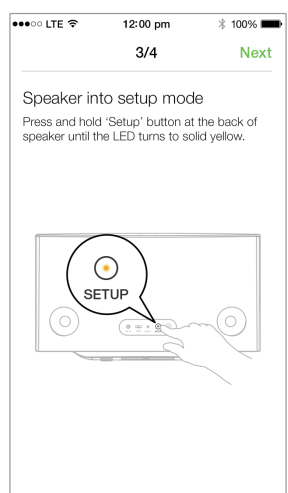
- 1 your Wi-Fi router is powered on and working properly.
- 2 the speaker has been powered on and booted up successfully.
- 3 (for option 1, 2 and 4 only) you have jotted down your Wi-Fi password.

\* If your Wi-Fi password contains such special characters as #/:!;' , you need to change your password.

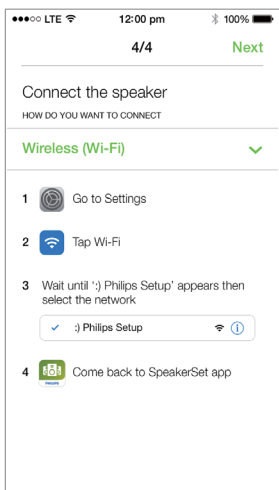
Once connected successfully, SW700M will remember your home Wi-Fi settings. Whenever SW700M is powered on, it is connected to your home Wi-Fi network automatically. Then you can enjoy Spotify music services via the **Spotify** app.

## Option 1: Set up through an iOS device

- 1 Before setup, make sure that your iOS device is connected to your home Wi-Fi network.
- 2 As instructed on the app, press and hold **SETUP** on the back of SW700M for more than 3 seconds.
  - ↳ Both the system status indicator on the front panel and the Wi-Fi status indicator on the **SETUP** button turns solid amber.



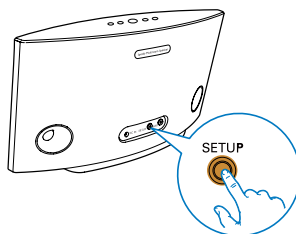
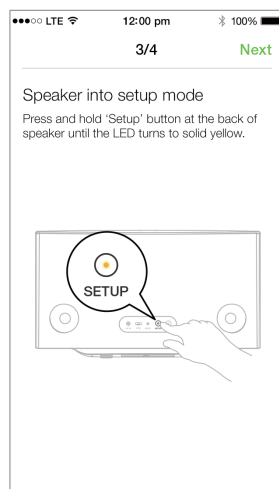
- 3 Tap **Next** on the above app screen, and then read how to proceed with network setup.
- 4 Select **Wireless (WI-FI)** under **HOW DO YOU WANT TO CONNECT?**



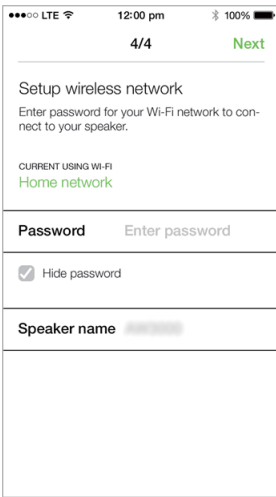
- 5 As instructed, exit the app, and then select **:) Philips Setup** from the list of available Wi-Fi networks.
- 6 After automatic detection of the speaker successfully, open the **SpeakerSet** app again.
- 7 Select the name of your home Wi-Fi network under **Select a network to use speaker**.
- 8 Enter the password of your home Wi-Fi network, and then tap **Done** to finish setup.
- 9 Wait until successful connection of the speaker to your home Wi-Fi network.
  - ↳ The speaker beeps.
  - ↳ The Wi-Fi status indicator on the **SETUP** button turns off.
  - ↳ The system status indicator on the front panel turns solid green.

## Option 2: Set up through an Android device

- 1 Before setup, make sure that your Android device is connected to your home Wi-Fi network.
- 2 As instructed on the app, press and hold **SETUP** on the back of SW700M for more than 3 seconds.
  - ↳ Both the system status indicator on the front panel and the Wi-Fi status indicator on the **SETUP** button turns solid amber.



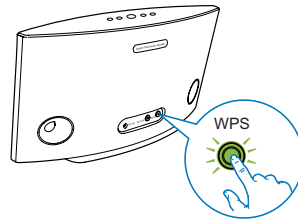
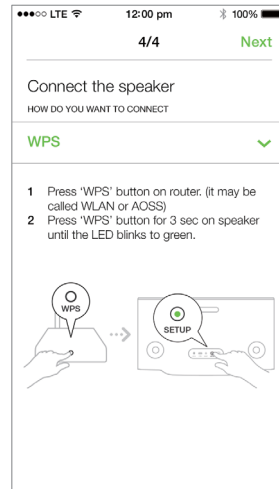
- 3 Tap **Next** on the above app screen, and then read how to proceed with network setup.
- 4 Select **Wireless (WI-FI)** under **HOW DO YOU WANT TO CONNECT?.**
- 5 Select the name of your home Wi-Fi network under **Select a network to use speaker.**
- 6 Enter the password of your home Wi-Fi network, and then tap **Done** to finish setup.



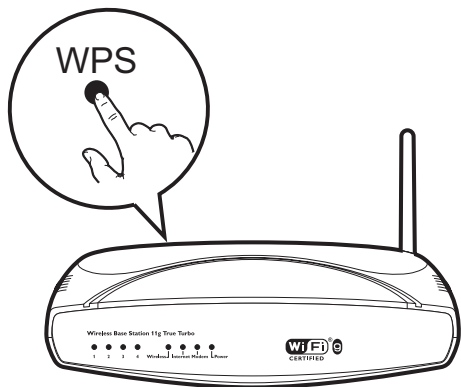
- 7 Wait until successful connection of the speaker to your home Wi-Fi network.
  - ↳ The speaker beeps.
  - ↳ The Wi-Fi status indicator on the **SETUP** button turns off.
  - ↳ The system status indicator on the front panel turns solid green.

## Option 3: Set up wireless connection to a WPS router directly

- 1 As instructed on the app, press and hold **WPS** on the back of SW700M for more than 3 seconds.
  - ↳ The Wi-Fi status indicator on the **WPS** button blinks green.



- 2 Press the WPS button on your home Wi-Fi router.



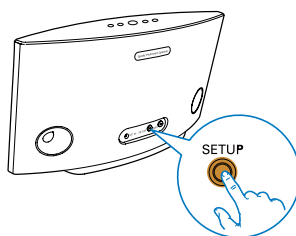
- 3 Wait until successful connection of the speaker to your home Wi-Fi network.
  - ↳ The speaker beeps.
  - ↳ The Wi-Fi status indicator on the **WPS** button turns off.
  - ↳ The system status indicator on the front panel turns solid green.

#### Tip

- Only WPA and WPA2 are supported. If the wireless security is WEP or no security is applied, the WPS method does not work.
- For some Wi-Fi routers, you may need to hold the WPS button for Wi-Fi connection or enable the WPS PBC function from the router configuration pages. See the user manuals of the specific routers for details.

## Option 4: Set up through a PC/Mac (advanced)

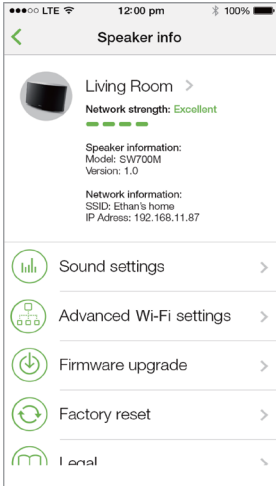
- 1 Go to your Wi-Fi enabled PC/Mac.
- 2 Press and hold **SETUP** on the back of SW700M for more than 3 seconds.
  - ↳ Both the system status indicator on the front panel and the Wi-Fi status indicator on the **SETUP** button turns solid amber.



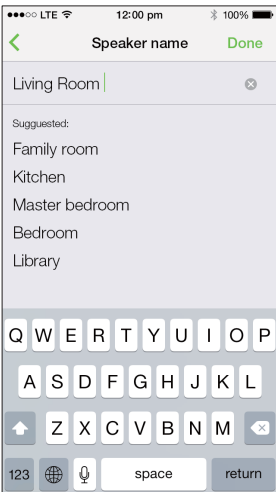
- 3 Select :) **Philips Setup** from the list of available Wi-Fi networks on your PC/Mac.
- 4 After successful connection, open a web browser on your PC/Mac.
- 5 Enter <http://philips.speakers> or **172.24.0.1** at the address bar and click the **Enter** key.
- 6 Make changes on the setup page and confirm your settings.
  - ↳ The speaker beeps.
  - ↳ The Wi-Fi status indicator on the **SETUP** button turns off.
  - ↳ The system status indicator on the front panel turns solid green.

## Rename speakers

- 1 After successful Wi-Fi setup, go to the home page and tap the speaker icon on the app screen.
- 2 Tap > beside the speaker name.



- 3 Rename the speaker as you like.



- 4 Tap **Done** to confirm.

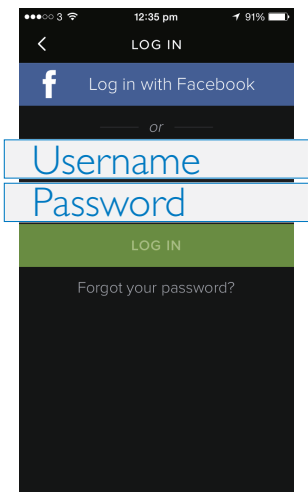
# 5 Play


## Enjoy Spotify music services through SW700M

### Note

- With Spotify, you can enjoy unlimited music on your new device. Thanks to the Spotify Connect feature, you can play and control all this music wirelessly. Choose music on your mobile or tablet, and hear it on your brand new device.
- Make sure that the speaker is connected to your home Wi-Fi network with Internet connection available.

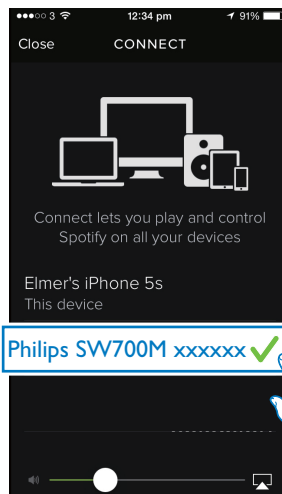
- 1 Switch to the **Spotify** app from **SpeakerSet** or open the **Spotify** app directly.
- 2 Log in to your Spotify premium account.



- 3 Tap the **Connect** icon  on the play screen.



- 4 Select the speaker for music streaming.



5 Stream music from the **Spotify** app to the speaker:

During play, you can:

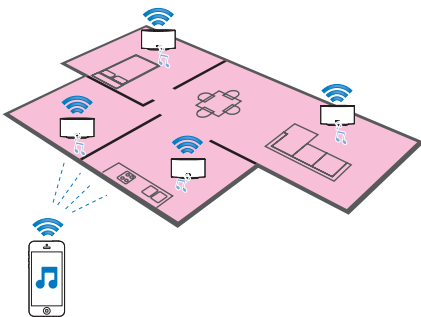
- press ►|| on the speaker to pause/resume music play.
- press ◀/▶ on the speaker to skip to the previous/next song.
- press +/- on the speaker to adjust volume level.

#### Tip


- See the **SpeakerSet** app screen for more advanced settings.
- You can take your iOS or Android device away from the network, or even switch it off. In this case, Spotify music will continue to play on your speaker:

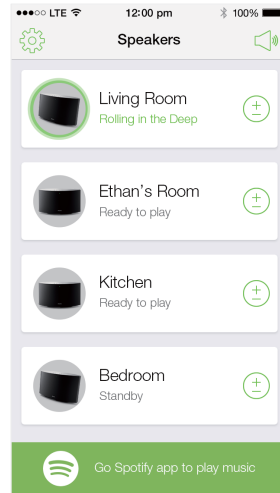
## Stream music to multiple speakers at the same time

You can add multiple Spotify Multiroom Speakers connected to the same Wi-Fi network into a group. Then, you can stream music from Spotify on your iOS or Android device in the same Wi-Fi network to all speakers in the group at the same time. In this way, you can enjoy music everywhere at your home.



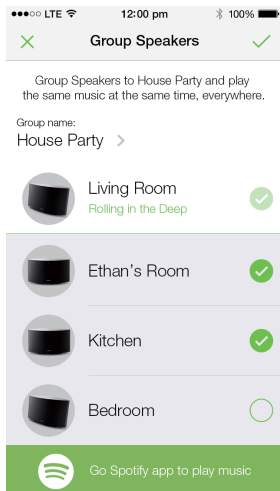
## Group and ungroup speakers

- 1 Connect multiple Spotify Multiroom Speakers to your home Wi-Fi network (see 'Connect SW700M to your home Wi-Fi network' on page 8).
- 2 Run **SpeakerSet** on your iOS/Android smartphone or tablet.
- 3 On the home page, tap  beside a speaker to act as the main speaker of a group.

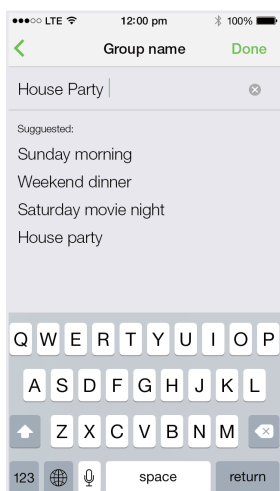




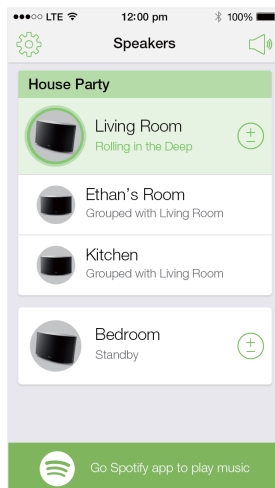
- 4 Tick circles beside the speakers to add them into the group.



- 5 Tap > beside the group name to enter the edit page.
- 6 Edit the group name as you like on the edit page.



- 7 Tap the check mark at the top right on the above app screen, and then wait for more than 10 seconds until the grouping finishes.

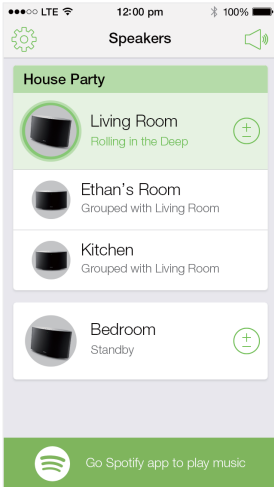


#### To ungroup speakers:

- 1 Tap ⊕ beside the main speaker.
- 2 Untick the box beside the speaker to be removed from the group.


## Enjoy music streamed to the group speakers

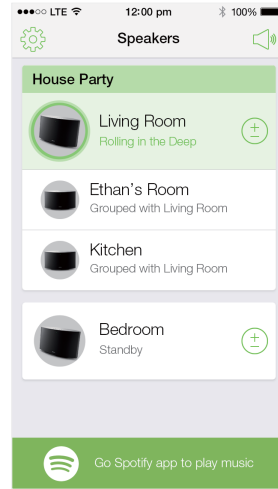
- 1 On the home page, tap the icon of the main speaker on the **SpeakerSet** app screen.
- 2 Tap **Go Spotify app to play music** to switch to the **Spotify** app.



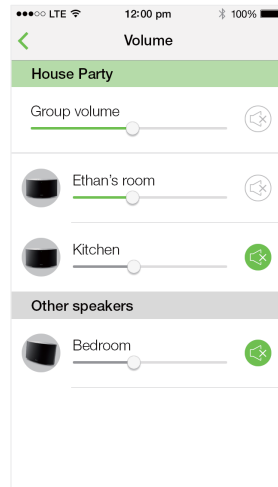
- 3 Log in to your Spotify premium account.
- 4 Tap the **Connect** icon (🔊) to select the main speaker.
- 5 Select and play your favorite music from the **Spotify** app.  
↳ You can enjoy music streamed to all speakers in the same group at the same time.

To adjust volume of all speakers in a group at the same time:

- 1 Open the **SpeakerSet** app, then tap  on the main page to enter the volume adjustment page.



- 2 Move the group volume slider to adjust volume of all speakers in the group at the same time.




**To adjust volume of an individual speaker:**

- Press +/- on the top panel of the speaker.
- Open the **SpeakerSet** app, then move the slider beside the speaker on the above volume adjustment page directly.

**To play/pause music play:**

- Press ►|| on the top panel of any speaker in the group or use controls on the **Spotify** app screen directly.

**Tip**

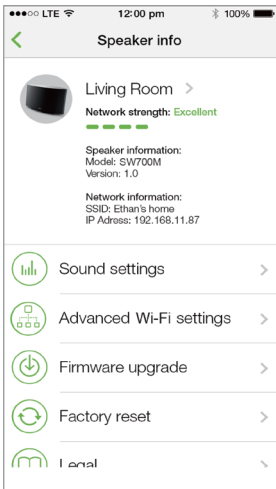
- On the volume adjustment page of the **SpeakerSet** app, you can also tap  beside a speaker to mute/unmute its volume output.
- More music controls and sound settings are available on the **SpeakerSet** app screen.

# 6 Other features

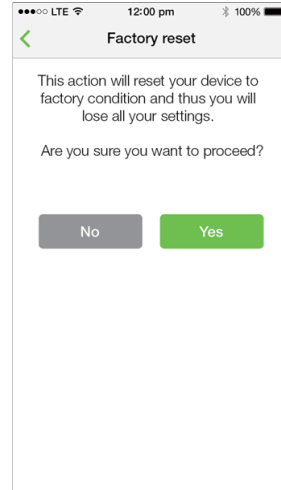
## Restore factory settings

In some cases, you may need to reset the speaker; for example, when you need to reset the Wi-Fi settings or log out from the current Spotify premium account.

- 1 Make sure that SW700M is powered on and connected to the same Wi-Fi network as your smartphone or tablet.
- 2 Make sure that your home Wi-Fi network is connected to the Internet.
- 3 Run **SpeakerSet** on your iOS or Android smartphone or tablet.
- 4 Tap the speaker image to see options available for the speaker:



- 5 Tap **Factory reset** to enter the factory reset page.



- 6 Tap **Yes** to reset your speaker.

If the above operation fails, you can reset the speaker in the following way:

- 1 Unplug the power cable.
- 2 Hold both the **+** and **▶** keys on the top panel and then plug in the power cable again.

### Tip

- The speaker reboots after factory reset.
- Your Spotify account will be logged out after factory reset.
- If the reset speaker is running in a group, it will be ungrouped. When the main speaker is reset, one of the other speakers in the group will serve as the main speaker instead.

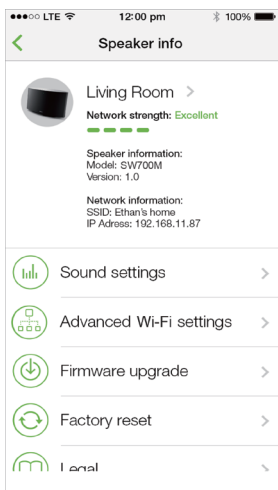
## Upgrade firmware

To improve the performance of SW700M, Philips may offer you new firmware for upgrade of your SW700M.

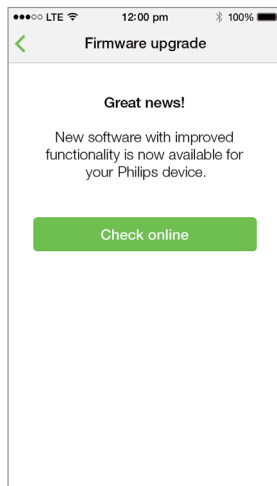
### Warning

- Always connect your SW700M to AC power for firmware upgrade. Never power off your SW700M nor close the app during firmware upgrade.

- 1 Make sure that SW700M is powered on and connected to the same Wi-Fi network as your smartphone or tablet.
- 2 Make sure that your home Wi-Fi network is connected to the Internet.
- 3 Run **SpeakerSet** on your iOS or Android smartphone or tablet.
- 4 Tap the speaker image to see options available for the speaker.



- 5 Tap **Firmware upgrade** to enter the firmware upgrade page.



- 6 Tap **Check online** to see whether any new version of firmware is available.
- 7 If a new version is available, tap **Update** to start firmware upgrade.
  - ↳ The system status indicator on the front panel blinks amber and red alternately during this process.
- 8 Wait until the firmware upgrade process finishes, then tap **OK** to reboot the speaker.

### Tip

- Depending on the network connection, it may take 10 minutes to finish upgrade.

# 7 Product information

## Note

- Product information is subject to change without prior notice.

## Specifications

### Amplifier

Rated Output Power	2 x 2W RMS @ 10%THD
Frequency Response	20 Hz - 20 kHz, ±3 dB
Signal to Noise Ratio	> 85 dB

### Speakers

Speaker Impedance	8 ohm
Speaker Driver	66 mm full range
Sensitivity	83dB/m/W

### Wireless

Wireless standard	802.11b/g/n
Wireless security	WEP 10 or 26 hex digit keys WPA (TKIP) or WPA2 (TKIP / AES) with 8 - 40 ASCII printable characters passphrase
Frequency range	2412 - 2462 MHz (CH1-CH11) (for /79, /37, /55, /97) 2412 - 2472 MHz (CH1-CH13) (for /12, /10, /05)

WPS PBC (one button push)	Yes
---------------------------	-----

## General information

AC power PHILIPS SWITCHING POWER SUPPLY	Model: TPA158B-12150-EU; input: 100 - 240V~, 50/60 Hz 0.5A MAX; output: 15V == 0.8 A Model: OH-1015E1500800U1; input: 100 - 240V~, 50/60Hz, 350mA; output: 15V == 800 mA
Operation Power Consumption	12 W
Power Consumption in Network Standby	< 3 W
Dimensions - Main Unit (L x W x H)	288 x 170 x 95 mm
Weight - Main Unit	1.1 kg

# 8 Troubleshooting



## Warning

- Never remove the casing of this apparatus.

To keep the warranty valid, never try to repair the system yourself.

If you encounter problems when using this apparatus, check the following points before requesting service. If the problem remains unsolved, go to the Philips web site ([www.philips.com/welcome](http://www.philips.com/welcome)). When you contact Philips, ensure that the apparatus is nearby and the model number and serial number are available.

### No power

- Make sure that the AC power plug of the speaker is connected properly.
- Make sure that there is power at the AC outlet.
- Check whether the speaker is in standby mode (see 'Connect power and switch on' on page 6).

### No sound

- Check whether the speaker is muted or the streamed music is still buffering. The system status indicator blinks green when the speaker is muted or during music buffering. If the speaker is muted, adjust volume on the **SpeakerSet** app or on SW700M directly.
- Check the Wi-Fi network connection. Set up the network again if needed (see 'Connect SW700M to your home Wi-Fi network' on page 8).
- If there is no sound from a speaker in a group, check whether the speaker is out of range. You can check whether the wireless connection of the speaker is poor on the app screen directly.

### No response from the speaker

- Restart SW700M, and then set up the Wi-Fi network for SW700M again (see 'Connect SW700M to your home Wi-Fi network' on page 8).

- Disconnect and reconnect the AC power plug to switch on the speaker again.
- If there is no sound from a speaker in a group, check whether the speaker is out of range. You can check whether the wireless connection of the speaker is poor on the app screen directly.

### How can I reconfigure the Wi-Fi settings?

- Reset the speaker (see 'Restore factory settings' on page 17), and then configure the Wi-Fi settings again (see 'Connect SW700M to your home Wi-Fi network' on page 8).

### Occasional breaking of music streaming

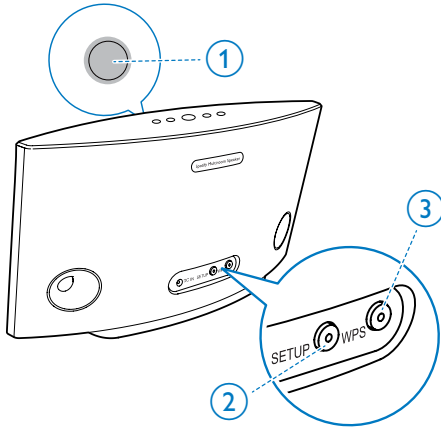
Do one or all of the following:

- Move SW700M closer to your Wi-Fi router.
- Remove any obstacles between SW700M and your Wi-Fi router.
- Avoid using Wi-Fi channel which is overlapped by the nearby Wi-Fi network.
- Check if your network speed is fast enough (in cases where multiple devices share the same router, the wireless performance may be affected). Turn off the other devices connected to your home router.
- Enable the Quality of Service (QoS) option (if available on the Wi-Fi router).
- Turn off other Wi-Fi routers.

### No response from the speaker

- Restart SW700M, and then set up the Wi-Fi network for SW700M again (see 'Connect SW700M to your home Wi-Fi network' on page 8).
- Disconnect and reconnect the AC power plug to switch on the speaker again.
- If there is no sound from a speaker in a group, check whether the speaker is out of range. You can check whether the wireless connection of the speaker is poor on the app screen directly.

# 9 Appendix: Understand meanings of LED colors



- ① System status indicator (on the front panel)
- ② SETUP indicator (on the back panel)
- ③ WPS indicator (on the back panel)

LED colors	LED behavior	Speaker status
	No light	Power off
	1 blinking amber slowly	Booting up
	1 blinking amber quickly	Connecting to a network
	1 and 2 indicators in solid amber	In app-assisted Wi-Fi setup mode

	1 blinking amber quickly, and 3 blinking green	In WPS mode
	1 solid green	Network connection successful
	1 blinking green quickly	During audio buffering
	1 blinking green slowly	Muted or playback paused
	1 dimmed by 50% in solid green	In standby mode with network connection
	1 solid red	In standby mode without network connection
	1 blinking red	Network connection failed
	1 solid red, and 2 solid amber	During factory reset
	1 blinking red and amber	During firmware upgrade
	1 blinking red, amber and green alternately	Firmware upgrade failed



## **Open Source Declaration for Philips SW700M/SW750M/SW100M**

ALAC
FLAC
Iperf
jQuery
JSBN 1.2
Jungo USB DFU Driver
Marvell WPS2 Client
mDNSResponder
OpenSSL
RSA MD5
zlib
getopt
Mongoose
Tremor

### **ALAC**

<http://alac.macosforge.org/>

The Apple Lossless Audio Codec sources are available under the Apache license. Details can be found here <http://www.apache.org/licenses/LICENSE-2.0>.

### **FLAC**

<https://xiph.org/flac/license.html>

The FLAC and Ogg FLAC formats themselves, and their specifications, are fully open to the public to be used for any purpose (the FLAC project reserves the right to set the FLAC specification and certify compliance). They are free for commercial or noncommercial use. That means that commercial developers may independently write FLAC or Ogg FLAC software which is compatible with the specifications for no charge and without restrictions of any kind. There are no licensing fees or royalties of any kind for use of the formats or their specifications, or for distributing, selling, or streaming media in the FLAC or Ogg FLAC formats.

The FLAC project also makes available software that implements the formats, which is distributed according to [Open Source](#) licenses as follows:

The reference implementation libraries are licensed under the New [BSD License](#). In simple terms, these libraries may be used by any application, Open or proprietary, linked or incorporated in whole, so long as acknowledgement is made to Xiph.org Foundation when using the source code in whole or in derived works. The Xiph License is free enough that the libraries have been used in commercial products to implement FLAC, including in the firmware of hardware devices where other Open Source licenses can be problematic. In the source code these libraries are called **libFLAC** and **libFLAC++**.

The rest of the software that the FLAC project provides is licensed under the [GNU General Public License](#) (GPL). This software includes various utilities for converting files to and from FLAC format, plugins for audio players, et cetera. In general, the GPL allows redistribution as long as derived works are also made available in source code form according to compatible terms.

Neither the FLAC nor Ogg FLAC formats nor any of the implemented encoding/decoding methods are covered by any known patent.

FLAC is one of a family of codecs of the Xiph.org Foundation, all created according to the same free ideals. For some other codecs' descriptions of the Xiph License see the [Speex](#) and [Vorbis](#) license pages.

## **lperf**

<http://pirlwww.lpl.arizona.edu/resources/guide/software/lperf/>

Copyright 1999,2000,2001,2002,2003

The Board of Trustees of the University of Illinois

All rights reserved

Permission is hereby granted, free of charge, to any person obtaining a copy of this software (lperf) and associated documentation files (the "Software"), to deal in the Software without restriction, including without limitation the rights to use, copy, modify, merge, publish, distribute, sublicense, and/or sell copies of the Software, and to permit persons to whom the Software is furnished to do so, subject to the following conditions:

Redistributions of source code must retain the above copyright notice, this list of conditions and the following disclaimers.

Redistributions in binary form must reproduce the above copyright notice, this list of conditions and the following disclaimers in the documentation and/or other materials provided with the distribution.

Neither the names of the University of Illinois, NCSA, nor the names of its contributors may be used to endorse or promote products derived from this Software without specific prior written permission.

THE SOFTWARE IS PROVIDED "AS IS", WITHOUT WARRANTY OF ANY KIND, EXPRESS OR IMPLIED, INCLUDING BUT NOT LIMITED TO THE WARRANTIES OF MERCHANTABILITY, FITNESS FOR A PARTICULAR PURPOSE AND NONINFRINGEMENT. IN NO EVENT SHALL THE CONTRIBUTORS OR COPYRIGHT HOLDERS BE LIABLE FOR ANY CLAIM, DAMAGES OR OTHER LIABILITY, WHETHER IN AN ACTION OF CONTRACT, TORT OR OTHERWISE, ARISING FROM, OUT OF OR IN CONNECTION WITH THE SOFTWARE OR THE USE OR OTHER DEALINGS IN THE SOFTWARE.

See [UI License](#) for complete details.

### **jQuery**

<http://jquery.org>

jQuery projects are released under the terms of the [MIT license](#).

The MIT License is simple and easy to understand and it places almost no restrictions on what you can do with a jQuery project.

You are free to use any jQuery project in any other project (even commercial projects) as long as the copyright header is left intact.

### **JSBN**

jsbn is released under a BSD license. See [LICENSE](#) for details.

### Licensing

-----

This software is covered under the following copyright:

```
/*
 * Copyright (c) 2003-2005 Tom Wu
 * All Rights Reserved.
 *
 * Permission is hereby granted, free of charge, to any person obtaining
 * a copy of this software and associated documentation files (the
 * "Software"), to deal in the Software without restriction, including
```

- \* without limitation the rights to use, copy, modify, merge, publish,
- \* distribute, sublicense, and/or sell copies of the Software, and to
- \* permit persons to whom the Software is furnished to do so, subject to
- \* the following conditions:
- \*
- \* The above copyright notice and this permission notice shall be
- \* included in all copies or substantial portions of the Software.
- \*
- \* THE SOFTWARE IS PROVIDED "AS-IS" AND WITHOUT WARRANTY OF ANY KIND,
- \* EXPRESS, IMPLIED OR OTHERWISE, INCLUDING WITHOUT LIMITATION, ANY
- \* WARRANTY OF MERCHANTABILITY OR FITNESS FOR A PARTICULAR PURPOSE.
- \*
- \* IN NO EVENT SHALL TOM WU BE LIABLE FOR ANY SPECIAL, INCIDENTAL,
- \* INDIRECT OR CONSEQUENTIAL DAMAGES OF ANY KIND, OR ANY DAMAGES WHATSOEVER
- \* RESULTING FROM LOSS OF USE, DATA OR PROFITS, WHETHER OR NOT ADVISED OF
- \* THE POSSIBILITY OF DAMAGE, AND ON ANY THEORY OF LIABILITY, ARISING OUT
- \* OF OR IN CONNECTION WITH THE USE OR PERFORMANCE OF THIS SOFTWARE.
- \*
- \* In addition, the following condition applies:
- \*
- \* All redistributions must retain an intact copy of this copyright notice
- \* and disclaimer.
- \*/

Address all questions regarding this license to:

Tom Wu  
tjw@cs.Stanford.EDU

### **Jungo USB DFU Driver**

<http://www.jungo.com/st/products/drivercore-advanced-usb-drivers/>

BSD license

### **Marvell WPS2 client**

<http://www.marvell.com/>

BSD license

### **mDNSResponder**

<http://www.opensource.apple.com/source/mDNSResponder/mDNSResponder-320.10.80/>

The majority of the source code in the mDNSResponder project is licensed under the terms of the Apache License, Version 2.0, available from:

<http://www.apache.org/licenses/LICENSE-2.0>

To accommodate license compatibility with the widest possible range of client code licenses, the shared library code, which is linked at runtime into the same address space as the client using it, is licensed under the terms of the "Three-Clause BSD License".

The Linux Name Service Switch code, contributed by National ICT Australia Ltd (NICTA) is licensed under the terms of the NICTA Public Software Licence (which is substantially similar to the "Three-Clause BSD License", with some additional language pertaining to Australian law).

### **OpenSSL**

<http://www.openssl.org>

OpenSSL is based on the SSLeay library developed by Eric Young and [Tim Hudson](#). The OpenSSL toolkit is licensed under an [Apache-style licence](#) which basically means that you are free to get and use it for commercial and non-commercial purposes.

### **RSA MD5**

```
/* MD5C.C - RSA Data Security, Inc., MD5 message-digest algorithm
*
* Copyright (C) 1991-2, RSA Data Security, Inc. Created 1991. All
* rights reserved.
*
* License to copy and use this software is granted provided that it
* is identified as the "RSA Data Security, Inc. MD5 Message-Digest
* Algorithm" in all material mentioning or referencing this software
* or this function.
*
* License is also granted to make and use derivative works provided
* that such works are identified as "derived from the RSA Data
* Security, Inc. MD5 Message-Digest Algorithm" in all material
* mentioning or referencing the derived work.
*
* RSA Data Security, Inc. makes no representations concerning either
```

- \* the merchantability of this software or the suitability of this
- \* software for any particular purpose. It is provided "as is"
- \* without express or implied warranty of any kind.
- \*
- \* These notices must be retained in any copies of any part of this
- \* documentation and/or software.

## **zlib**

<http://www.zlib.net/>

/\* zlib.h -- interface of the 'zlib' general purpose compression library  
version 1.2.8, April 28th, 2013

Copyright (C) 1995-2013 Jean-loup Gailly and Mark Adler

This software is provided 'as-is', without any express or implied warranty. In no event will the authors be held liable for any damages arising from the use of this software.

Permission is granted to anyone to use this software for any purpose, including commercial applications, and to alter it and redistribute it freely, subject to the following restrictions:

1. The origin of this software must not be misrepresented; you must not claim that you wrote the original software. If you use this software in a product, an acknowledgment in the product documentation would be appreciated but is not required.
2. Altered source versions must be plainly marked as such, and must not be misrepresented as being the original software.
3. This notice may not be removed or altered from any source distribution.

Jean-loup Gailly      Mark Adler  
jloup@gzip.org      madler@alumni.caltech.edu

\*/

## **getopt**

<http://cvsweb.netbsd.org/bsdweb.cgi/src/lib/libc/stdlib/>

BSD license

## **Mongoose**

<https://github.com/cesanta/mongoose/>

Mongoose is released under commercial and [GNU GPL v.2](#) open source licenses. The GPLv2 open source License does not generally permit incorporating this software into non-open source programs. For those customers who do not wish to comply with the GPLv2 open source license requirements, [Cesanta Software](#) offers a full, royalty-free commercial license and professional support without any of the GPL restrictions.

## **Tremor**

<http://wiki.xiph.org/index.php/Tremor>

BSD license







2015 © WOOX Innovations Limited.  
All rights reserved.

Philips and the Philips' Shield Emblem are registered trademarks of Koninklijke Philips N.V. and are used by WOOX Innovations Limited under license from Koninklijke Philips N.V.

SW700M\_UM\_EN\_V3.0

