

Register your product and get support at
www.philips.com/welcome

HTS2511



User manual

PHILIPS

Contents

1 Important	2
Safety	2
Care for your product	3
Care of the environment	3
Help and support	3
2 Your home theatre	4
Main unit	4
Connectors	4
Remote control	5
3 Connect and set up	6
Connect speakers	6
Connect to TV	7
Connect audio from TV and other devices	8
Set up speakers	8
4 Use your home theatre	9
Access the home menu	9
Discs	9
Data files	10
USB storage devices	10
Video and picture options	11
Radio	11
Choose sound	12
5 Change settings	12
Language settings	12
Picture and video settings	13
Audio settings	13
Parental control settings	13
Display settings	13
Energy saving settings	14
Restore default settings	14

6 Update software	14
Check software version	14
Update software through USB	14
7 Product specifications	15
8 Troubleshooting	17
9 Notice	18
Copyright	18
Mains fuse (UK only)	18
Compliance	18
Trademarks	18
10 Index	19

1 Important

Read and understand all instructions before you use your product. If damage is caused by failure to follow instructions, the warranty does not apply.

Safety

Risk of electric shock or fire!

- Never expose the product and accessories to rain or water. Never place liquid containers, such as vases, near the product. If liquids are spilt on or into the product, disconnect it from the power socket immediately. Contact Philips Consumer Care to have the product checked before use.
- Never place the product and accessories near naked flames or other heat sources, including direct sunlight.
- Never insert objects into the ventilation slots or other openings on the product.
- Where the mains plug or an appliance coupler is used as the disconnect device, the disconnect device shall remain readily operable.
- Disconnect the product from the power socket before lightning storms.
- When you disconnect the power cord, always pull the plug, never the cable.

Risk of short circuit or fire!

- Before you connect the product to the power socket, ensure that the power voltage matches the value printed on the back or bottom of the product. Never connect the product to the power socket if the voltage is different.

Risk of injury or damage to the home theatre!

- For wall-mountable products, use only the supplied wall mount bracket. Secure the wall mount to a wall that can support the combined weight of the product and the wall mount. Koninklijke Philips Electronics N.V. bears no responsibility for improper wall mounting that results in accident, injury or damage.
- For speakers with stands, use only the supplied stands. Secure the stands to the speakers tightly. Place the assembled stands on flat, level surfaces that can support the combined weight of the speaker and stand.

- Never place the product or any objects on power cords or on other electrical equipment.
- If the product is transported in temperatures below 5°C, unpack the product and wait until its temperature matches room temperature before connecting it to the power socket.
- Visible and invisible laser radiation when open. Avoid exposure to beam.
- Do not touch the disc optical lens inside the disc compartment.
- Parts of this product can be made of glass. Handle with care to avoid injury and damage.

Risk of overheating!

- Never install this product in a confined space. Always leave a space of at least four inches around the product for ventilation. Ensure curtains or other objects never cover the ventilation slots on the product.

Risk of contamination!

- Do not mix batteries (old and new or carbon and alkaline, etc.).
- Danger of explosion if batteries are incorrectly replaced. Replace only with the same or equivalent type.
- Remove batteries if they are exhausted or if the remote control is not to be used for a long time.
- Batteries contain chemical substances, they should be disposed of properly.

Risk of swallowing batteries!

- The product/remote control may or may not contain a coin/button type battery, which can be swallowed. Keep the battery out of reach of children at all times! If swallowed, the battery can cause serious injury or death. Severe internal burns can occur within two hours of ingestion.
- If the battery has been swallowed, seek immediate medical attention.
- When you change the batteries, always keep all new and used batteries out of reach of children. Ensure that the battery compartment is completely secure after you replace the battery.
- If the battery compartment cannot be completely secured, discontinue use of the product. Keep out of reach of children and contact the manufacturer.

Care for your product

- Do not insert any objects other than discs into the disc compartment.
- Do not insert warped or cracked discs into the disc compartment.
- Remove discs from the disc compartment if you are not using the product for an extended period of time.
- Use only microfibre cloth to clean the product.

Care of the environment



Your product is designed and manufactured with high quality materials and components, which can be recycled and reused.



When this crossed-out wheeled bin symbol is attached to a product it means that the product is covered by the European Directive 2002/96/EC. Please inform yourself about the local separate collection system for electrical and electronic products.

Please act according to your local rules and do not dispose of your old products with your normal household waste.

Correct disposal of your old product helps to prevent potential negative consequences for the environment and human health.



Your product contains batteries covered by the European Directive 2006/66/EC, which cannot be disposed with normal household waste.

Please inform yourself about the local rules on separate collection of batteries because correct disposal helps to prevent negative consequences for the environmental and human health.

Help and support

Philips provides extensive online support. Visit our website at www.philips.com/support to:

- download the complete user manual
- print the quick start guide
- watch video tutorials (available only for selected models)
- find answers to frequently answered questions (FAQs)
- email us a question
- chat with our support representative.

Follow the instructions on the website to select your language, and then enter your product model number.

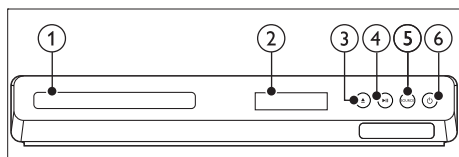
Alternatively, you can contact Philips Consumer Care in your country. Before you contact Philips, note down the model number and serial number of your product. You can find this information on the back or bottom of your product.

2 Your home theatre

Congratulations on your purchase, and welcome to Philips! To fully benefit from the support that Philips offers, register your product at www.philips.com/welcome.

Main unit

This section includes an overview of the main unit.

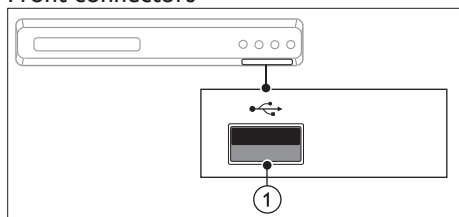


- a **Disc compartment**
- b **Display panel**
- c **▲ (Open/Close)**
Open or close the disc compartment, or eject the disc.
- d **▶|| (Play/Pause)**
Start, pause or resume play.
- e **SOURCE**
Select an audio or video source for the home theatre.
- f **⏻ (Standby-On)**
Switch the home theatre on or to standby.

Connectors

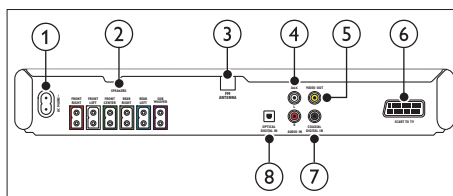
This section includes an overview of the connectors available on your home theatre.

Front connectors



- a **USB**
Audio, video or picture input from a USB storage device.

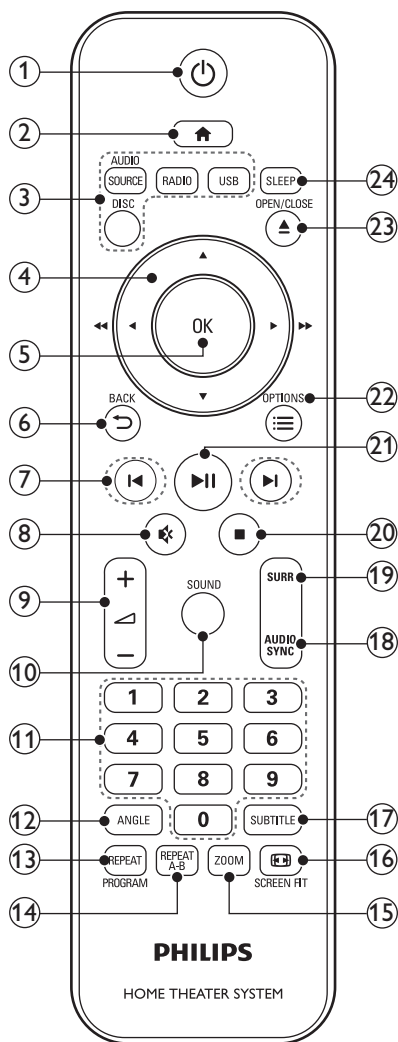
Rear connectors



- a **AC MAINS**
Connect to the power supply.
- b **SPEAKERS**
Connect to the supplied speakers and subwoofer.
- c **FM ANTENNA**
Fixed FM antenna.
- d **AUDIO IN-AUX**
Connect to an analogue audio output on the TV or an analogue device.
- e **VIDEO OUT**
Connect to the composite video input on the TV.
- f **SCART TO TV**
Connect to the scart input on the TV.
- g **DIGITAL IN-COAXIAL**
Connect to a coaxial audio output on the TV or a digital device.
- h **DIGITAL IN-OPTICAL**
Connect to an optical audio output on the TV or a digital device.

Remote control

This section includes an overview of the remote control.



- a **⏻ (Standby-On)**
Switch the home theatre on or to standby.
- b **🏠 (Home)**
Access the home menu.

- c **Source buttons**
- **DISC:** Switch to disc source. Access or exit the disc menu when you play a disc.
 - **AUDIO SOURCE:** Select an audio input source.
 - **RADIO:** Switch to FM radio.
 - **USB:** Switch to USB storage device.
- d **Navigation buttons**
- Navigate menus.
 - In video mode, press left or right to fast backward or fast forward; press up or down to slow forward or slow backward.
 - In radio mode, press left or right to search a radio station; press up or down to fine tune a radio frequency.
- e **OK**
Confirm an entry or selection.
- f **↶ BACK**
Return to a previous menu screen.
- g **⏮ / ⏭ (Previous/Next)**
- Skip to the previous or next track, chapter or file.
 - In radio mode, select a preset radio station.
- h **🔇 (Mute)**
Mute or restore volume.
- i **🔊 +/-**
Increase or decrease volume.
- j **SOUND**
Select a sound mode.
- k **Numeric buttons**
Select an item to play.
- l **ANGLE**
Select video scenes recorded in different camera angles.
- m **REPEAT / Programme**
- Select or turn off repeat mode.
 - In radio mode, press once to access programme mode, and press again to store the radio station.
 - In radio mode, press and hold for three seconds to reinstall the radio stations.
- n **REPEAT A-B**
Mark two points within a chapter or track to repeat play, or turn off the repeat mode.

- o **ZOOM**
Zoom into a video scene or picture. Press the **Navigation buttons** (left/right) to select a zoom factor.
- p **SCREEN FIT**
Fit the picture format to the TV screen.
- q **SUBTITLE**
Select subtitle language for video.
- r **AUDIO SYNC**
 - Select an audio language or channel.
 - Press and hold to access audio delay setting, and then press the **Navigation buttons** to delay the audio to match the video.
- s **SURR**
Select surround sound or stereo sound.
- t **■ (Stop)**
 - Stop play.
 - In radio mode, press and hold to erase the current preset radio stations.
- u **▶|| (Play/Pause)**
Start, pause or resume play.
- v **≡ OPTIONS**
Access more play options while playing a disc or a USB storage device.
- w **▲ OPEN/CLOSE**
Open or close the disc compartment, or eject the disc.
- x **SLEEP**
Switch the home theatre to standby mode after the elapsed time.

3 Connect and set up

This section helps you connect your home theatre to a TV and other devices, and then set it up. For information about the basic connections of your home theatre and accessories, see the quick start guide. For a comprehensive interactive guide, visit www.connectivityguide.philips.com.



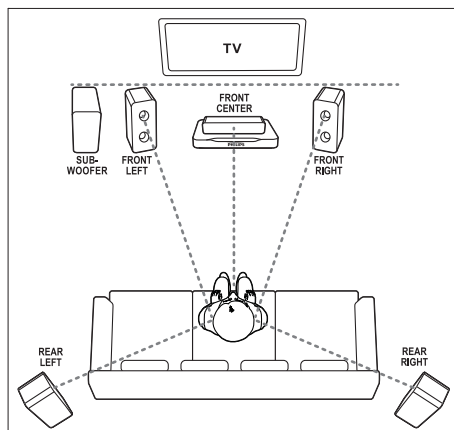
Note

- For identification and supply ratings, see the type plate at the back or bottom of the product.
- Before you make or change any connections, make sure that all devices are disconnected from the power socket.

Connect speakers

The speaker cables are colour-coded for easy connection. To connect a speaker to your home theatre, match the colour on the speaker cable to the colour on the connector:

Speaker position plays a critical role in setting up a surround sound effect. For best effect, position all the speakers towards the seating position and place them close to your ear level (seated).





Note

- Surround sound depends on factors such as room shape and size, type of wall and ceiling, windows and reflective surfaces, and speaker acoustics. Experiment with the speaker positions to find the optimum setting for you.

Follow these general guidelines for speakers placement.

- 1 Seating position:**
This is the centre of your listening area.
- 2 FRONT Centre** (front centre) speaker:
Place the centre speaker directly in front of the seating position, either above or below your TV.
- 3 FRONT LEFT** (front left) and **FRONT RIGHT** (front right) speakers:
Place the left and right speakers in the front, and at equal distance from the centre speaker. Make sure that the left, right, and the centre speakers are at equal distance from your seating position.
- 4 REAR LEFT** (rear left) and **REAR RIGHT** (rear right) speakers:
Place the rear surround speakers to the left and right side of your seating position, either in line with it or slightly behind it.
- 5 SUBWOOFER** (subwoofer):
Place the subwoofer at least one meter to the left or right of the TV. Leave about 10-centimeter clearance from the wall.

Connect to TV

Connect your home theatre to a TV to watch videos. You can listen to the TV audio through your home theatre speakers. Use the best quality connection available on your home theatre and TV.

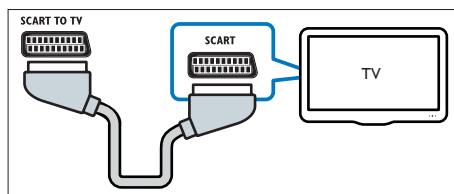
Option 1: Connect to the TV through SCART

Good quality video

A SCART connection combines video and audio signals. A SCART connection can support RGB video but not high-definition video.

- 1** Using a SCART cable, connect the **SCART TO TV** connector on your home theatre to the **SCART IN** connector on the TV.

- 2** When you watch TV programmes, press **SOURCE** on your home theatre repeatedly to select the correct audio input.

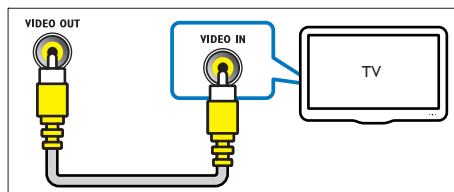


Option 2: Connect to the TV through composite video

Basic quality video

A composite connection does not support high-definition video.

- 1** Using a composite video cable, connect the **VIDEO OUT** connector on your home theatre to the **VIDEO IN** connector on the TV.
 - The video input connector might be labelled **AV IN**, **COMPOSITE**, or **BASEBAND**.
- 2** Connect an audio cable to hear the TV audio through your home theatre (see 'Connect audio from TV and other devices' on page 8).
- 3** When you watch TV programmes, press **SOURCE** on your home theatre repeatedly to select the correct audio input.
- 4** When you watch videos, switch your TV to the correct video input. For details, see the TV user manual.



Connect audio from TV and other devices

Play audio from TV or other devices through your home theatre.
Use the best quality connection available on your TV, home theatre, and other devices.

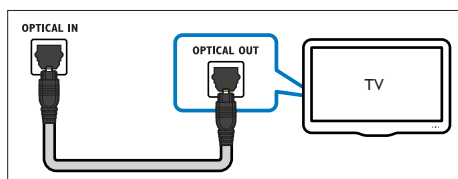
Note

- The audio connections in this user manual are only recommendations. You can use other connections too.

Option 1: Connect audio through a digital optical cable

Best quality audio

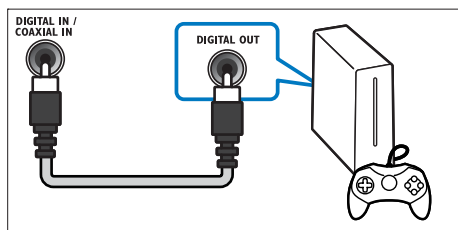
- 1 Using an optical cable, connect the **OPTICAL** connector on your home theatre to the **OPTICAL OUT** connector on the TV or other device.
 - The digital optical connector might be labelled **SPDIF** or **SPDIF OUT**.



Option 2: Connect audio through a digital coaxial cable

Good quality audio

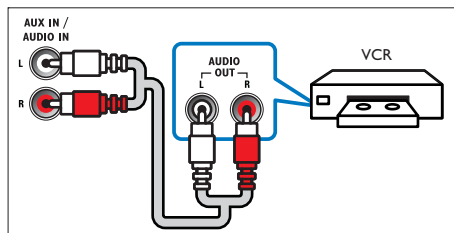
- 1 Using a coaxial cable, connect the **COAXIAL** connector on your home theatre to the **COAXIAL/DIGITAL OUT** connector on the TV or other device.
 - The digital coaxial connector might be labelled **DIGITAL AUDIO OUT**.



Option 3: Connect audio through analogue audio cables

Basic quality audio

- 1 Using an analogue cable, connect the **AUX** connectors on your home theatre to the **AUDIO OUT** connectors on the TV or other device.



Set up speakers

Set up the speakers manually to experience customised surround sound.

Before you start

Make the necessary connections described in the quick start guide, and then switch the TV to the correct source for your home theatre.

- 1 Press **⬆** (Home).
- 2 Select **[Setup]** and then press **OK**.
- 3 Select **[Audio]** > **[Speaker Setup]**.
- 4 Press the **Navigation buttons** and **OK** to select and change:
 - **[Speakers Volume]**: Set the volume level of each speaker.
 - **[Speakers Delay]**: Set the delay time for speakers which are placed closer to the seating position in order to obtain equal audio transmission from all the speakers.

4 Use your home theatre

This section helps you use the home theatre to play media from a wide range of sources.

Before you start

- Make the necessary connections described in the quick start guide and the user manual.
- Switch the TV to the correct source for your home theatre (for example, HDMI, AV IN).

Access the home menu

The home menu provides easy access to connected devices, setup and other useful features in your home theatre.

- 1 Press **⬆ (Home)**.
» The home menu is displayed.
- 2 Press the **Navigation buttons** and **OK** to select the following:
 - **[DISC]**: Start disc play.
 - **[USB]**: Access the USB content browser
 - **[Setup]**: Access menus to change video, audio and other settings.
- 3 Press **⬆ (Home)** to exit.

Discs

Your home theatre can play DVDs, VCDs, and CDs. It can also play discs that you've made at home, such as CD-R discs of photos and music.

- 1 Insert a disc into the home theatre.
- 2 If the disc does not play automatically, press **DISC**.
- 3 Use the remote control to control play.

Play buttons

Button	Action
Navigation buttons	Navigate menus. Up/Down: <ul style="list-style-type: none"> • Video: Slow forward or slow backward (VCD/SVCD can only slow forward). • Picture: Rotate the picture clockwise or anti-clockwise. Left/Right: <ul style="list-style-type: none"> • Video: Fast backward or fast forward. Press repeatedly to change the search speed.
OK	Confirm an entry or selection.
▶ (Play/Pause)	Start, pause or resume play.
■	Stop play.
◀/▶	Skip to the previous or next track, chapter or file.
SUBTITLE	Select subtitle language for video.
AUDIO SYNC	Select an audio language or channel.
DISC	Access or exit the disc menu.
Ⓜ (Fit)	Fit the picture format to the TV screen.
SCREEN FIT	
ZOOM	Zoom into a video scene or picture.
REPEAT	Select or turn off repeat mode.
REPEAT A-B	Mark two points within a chapter or track to repeat play, or turn off the repeat mode.
ANGLE	Select video scenes recorded in different camera angles.
≡ (Options)	Access the advanced options when you play your video, or media files (see 'Video and picture options' on page 11).

Synchronise picture and sound

If the audio and video are not synchronised, delay the audio to match the video.

- 1 While playing video, press and hold **AUDIO SYNC**.
» Audio sync menu is displayed.
- 2 Press the **Navigation buttons** to synchronise the audio with the video, and then press **OK**.

Note

- Picture and sound can be synchronised through the setup menu, press **⬆ (Home)**, select **[Setup]** > **[Audio]** > **[Audio Sync]**.

Data files

Your home theatre can play pictures, audio and video files contained in a disc or a USB storage device. Before you play a file, check that the file format is supported by your home theatre (see 'File formats' on page 15).

- 1 Play the files from a disc or USB storage device.
- 2 To stop play, press **■**.
 - To resume the video from where you stopped, press **▶||**.

Subtitles

If your video has subtitles in multiple languages, select a subtitle language.

Note

- Make sure that the subtitle file has the exact same name as the video file. For example, if the video file is named 'movie.avi', name the subtitle file as 'movie.srt' or 'movie.sub'.
- Your home theatre supports the following file formats: .srt, .sub, .txt, .ssa, .ass, .smi, and .sami. If the subtitles do not appear correctly, change the character set.

- 1 While playing video, press **SUBTITLE** to select a language.
- 2 For DivX video, if the subtitles do not appear correctly, continue the following steps to change the character set.
- 3 Press **⬆ (Home)**.
- 4 Select **[Setup]** and then press **OK**.
- 5 Select **[Preferences]** > **[DivX Subtitle]**.
- 6 Select a character set that supports the subtitle.

Character Set	Language
[Standard]	English, Albanian, Danish, Dutch, Finnish, French, Gaelic, German, Italian, Kurdish (Latin), Norwegian, Portuguese, Spanish, Swedish and Turkish
[Central Eur]	Albanian, Croat, Czech, Dutch, English, German, Hungarian, Irish, Polish, Romanian, Slovak, Slovene and Sorbian
[Hebrew]	English, Modern Hebrew
[Cyrillic]	Bulgarian, Belorussian, English, Macedonian, Moldavian, Russian, Serbian and Ukrainian
[Greek]	Greek

VOD code for DivX

Before you purchase DivX videos and play them on your home theatre, register the home theatre on www.divx.com using the DivX VOD code.

- 1 Press **⬆ (Home)**.
- 2 Select **[Setup]** and then press **OK**.
- 3 Select **[General]** > **[DivX(R) VOD Code]**.
 - » The DivX VOD registration code for your home theatre is displayed.

USB storage devices


Enjoy pictures, audio, and video stored on a USB storage device such as an MP4 player or digital camera.

What you need

- A USB storage device that is formatted for FAT file system, and complies with the Mass Storage Class.

Note


- If you use a USB extension cable, USB HUB or USB multi-reader, the USB storage device may not be recognised.
- You can connect to a digital camera if they can play the files without using a special computer programme.

- 1 Connect a USB storage device to the  (USB) connector on your home theatre.
- 2 Press **USB**.
 - » A content browser is displayed.
- 3 Select a file and then press **OK**.
- 4 Use the play buttons to control play (see 'Play buttons' on page 9).




Video and picture options

Use advanced features when you play pictures and video files from a disc or a USB storage device.

Video options




- 1 Press  **OPTIONS**.
 - » The video options menu is displayed. Depending on the video source, some options are not available.
- 2 Press the **Navigation buttons** and **OK** to select and change:
 - **[Info]**: Display the play information.
 - **[PBC]**: Enable or disable the content menu navigation of VCD and SVCD discs with Play Back Control feature.
 - **[Aspect ratio]**: Select a display ratio of picture that matches your TV screen.
 - **[Audio]**: Select audio language for video.
 - **[Subtitle]**: Select subtitle language for video.
 - **[Angle]**: Select video scenes recorded in different camera angels.

Picture options

- 1 Press  **OPTIONS**.
- 2 Press the **Navigation buttons** and **OK** to select and change:
 - **[Colour]**: Turn on or off the colour mode.
 - **[Photo preview]**: Display the thumbnail of photos.
- 3 Press  /  to go to previous or next preview page.
- 4 Press the **Navigation buttons** and **OK** to select a picture.

Musical slideshow

If the picture and audio files are from the same disc or USB storage device, you can create a musical slideshow.


- 1 Select an audio track and then press **OK**.
- 2 Press  **BACK** and then go to the picture folder.
- 3 Select a picture and then press **OK** to start the slideshow.
- 4 Press  to stop slideshow.
- 5 Press  again to stop music.



Radio


Listen to FM radio on your home theatre, and store up to 40 radio stations.

Note

- AM and digital radio are not supported.
- If no stereo signal is detected, or if fewer than five stations are found, you are prompted to install the radio stations again.

- 1 Extend the FM antenna at the back of your home theatre and place it away from the TV or other sources of radiation.
- 2 Press **RADIO**.
 - » If you have already installed the radio stations, the last channel that you listened to is played.
 - » If you have not installed any radio stations, the message **AUTO INSTALL...PRESS PLAY** appears on the display panel. press .
- 3 Use the remote control to listen or to change radio stations.

Button	Action
Numeric buttons,  / 	Select a preset radio station.
Navigation buttons	Left/Right: Search for a radio station. Up/Down: Fine tune a radio frequency.

Button	Action
	Press to stop the installation of radio stations. Press and hold to erase the preset radio station.
PROGRAM	Manual: 1) Press PROGRAM . 2) Press ◀ / ▶ to select your preset. 3) Press PROGRAM again to store the radio station. Automatic: Press and hold for three seconds to reinstall the radio stations.

Choose sound

This section helps you choose the ideal sound for your video or music.

Sound mode

Select predefined sound modes to suit your video or music.

- 1 Press **SOUND** repeatedly to select a sound mode.
 - **moVIE**: Enjoy a cinematic audio experience, specially enhanced for movies.
 - **muSic**: Recreate the original recording environment of your music, in the studio or at a concert.
 - **gAmIng**: Enjoy thrilling arcade sounds, ideal for action-packed video games or loud parties.
 - **nEwS**: Hear every word with optimised speech and clear vocals.
 - **origInAL**: Experience the original sound of your movies and music, without added sound effects.

Surround sound mode

Experience an immersive audio experience with surround sound modes.

- 1 Select **SURR** repeatedly to select a surround mode.
 - **Surround (muL-cH)**: 5.1-channel surround sound, best cinematic experience.
 - **StErEo**: Two-channel stereo sound. Ideal for listening to music.

5 Change settings

The home theatre settings are already configured for optimal performance. Unless you have a reason to change a setting, we recommend that you keep the default setting.



Note

- You cannot change a setting that is grayed out.
- To return to the previous menu, press **↶** **BACK**. To exit the menu, press **⬆** **(Home)**.

Language settings

Onscreen display language

- 1 Press **⬆** **(Home)**.
- 2 Select **[Setup]** and then press **OK**.
- 3 Select **[General]** and then press **OK**.
 - **[OSD Language]**: Select a display language for menu.

Disc language

- 1 Press **⬆** **(Home)**.
- 2 Select **[Setup]** and then press **OK**.
- 3 Select **[Preferences]** and then press **OK**.
 - **[Audio]**: Select an audio language for discs.
 - **[Subtitle]**: Select a subtitle language for discs.
 - **[Disc Menu]**: Select a menu language for discs.



Note

- If your preferred disc language is not available, select **[Others]** from the list, and enter the 4-digit language code found at the end of this user manual.
- If you select a language that is not available on a disc, the home theatre uses the default language of the disc.

Picture and video settings

- 1 Press **⬆** (Home).
- 2 Select **[Setup]** and then press **OK**.
- 3 Select **[Video]** and then press **OK**.
 - **[TV System]**: Select a video format supported by the TV.
 - **[TV Display]**: Select a picture format to fit the TV screen.
 - **[SCART Setting]**: Select the SCART output to support RGB or CVBS video quality.
 - **[Picture Setting]**: Select animation for the slide show.



Note

- If you change a setting, make sure that the TV supports the new setting.

Audio settings

- 1 Press **⬆** (Home).
- 2 Select **[Setup]** and then press **OK**.
- 3 Select **[Audio]** and then press **OK**.
 - **[Sound Mode]**: Select a predefined sound mode to suit your video and music.
 - **[Night Mode]**: Select quiet or full dynamic sound. Night mode decreases the volume of loud sounds and increases volume of sounds such as speech. Applicable to Dolby Digital encoded DVD discs only.
 - **[Treble]/[Bass]**: Set the high frequency (treble) and low frequency (bass) settings of the home theatre.

Parental control settings

Password and Ratings

- 1 Press **⬆** (Home).
- 2 Select **[Setup]** and then press **OK**.
- 3 Select **[Preferences]** and then press **OK**.
 - **[Password]**: Set or change your password for parental control access. If you do not have a password or have forgotten your password, enter **0000**.
 - **[Parental Control]**: Enable maturity-based restricted access for playback of DVD-video that are recorded with ratings. To play discs irrespective of the rating, select **[8 Adult]**.

Lock disc

- 1 Press **⬆** (Home).
- 2 Select **[Setup]** and then press **OK**.
- 3 Select **[General]** and then press **OK**.
 - **[Disc Lock]**: Lock the disc to restrict play. You can lock up to 20 discs on your home theatre.



Note

- To play a locked disc, follow the onscreen instructions to enter the password, and then press **OK**.

Display settings

- 1 Press **⬆** (Home).
- 2 Select **[Setup]** and then press **OK**.
- 3 Select **[Preferences]** and then press **OK**.
 - **[PBC]**: Enable or disable the content menu navigation of VCD and SVCD discs with Play Back Control feature.

Energy saving settings

- 1 Press **⬆** (Home).
- 2 Select **[Setup]** and then press **OK**.
- 3 Select **[General]** and then press **OK**.
 - **[Display Dim]**: Set the brightness of the home theatre front panel display.
 - **[Sleep Timer]**: Switch the home theatre to standby mode after the elapsed time.
 - **[Auto Standby]**: Switch the home theatre to standby mode after 30 minutes of no activity when in disc or USB mode.

Restore default settings

- 1 Press **⬆** (Home).
- 2 Select **[Setup]** and then press **OK**.
- 3 Select **[Preferences]** > **[Default]**, and then press **OK**.
- 4 Select **[OK]** and then press **OK** to confirm.
 - » Your home theatre is reset to its default settings, except for password, parental control and disc lock settings.

6 Update software

Philips continually tries to improve its products. To get the best features and support, update your home theatre with the latest software.

Compare the version of your current software with the latest version on www.philips.com/support. If the current version is lower than the latest version available on the Philips support website, upgrade your home theatre with the latest software.



Caution

- Do not install a lower version of software than the current version installed on your product. Philips is not liable for problems caused due to software downgrade.

Check software version

Check the version of the current software installed on your home theatre.

- 1 Press **⬆** (Home).
- 2 Select **[Setup]** and then press **OK**.
- 3 Select **[Preferences]** > **[Version Info]**.
 - » The software version is displayed.

Update software through USB

What you need

- A USB flash drive that is FAT-formatted, with at least 75MB of memory. Do not use a USB hard drive.
- A computer with Internet access.
- An archive utility that supports the ZIP file format.

Step 1: Download the latest software

- 1 Connect a USB flash drive to your computer.
- 2 In your web browser, go to www.philips.com/support.
- 3 At the Philips Support website, find your product and locate the **Software and drivers**.
 - » The software update is available as a zip file.
- 4 Save the zip file in the root directory of your USB flash drive.
- 5 Use the archive utility to extract the software update file in the root directory.
- 6 Disconnect the USB flash drive from your computer.

Step 2: Update the software



Caution

- Do not switch off the home theatre or remove the USB flash drive during the update.

- 1 Connect the USB flash drive containing the downloaded file to your home theatre.
 - Make sure that the disc compartment is closed and there is no disc inside.
- 2 Switch your TV to the correct source for your home theatre.
- 3 Follow the onscreen instructions to confirm the update.
 - » Once complete, the home theatre automatically switches off and restarts. If it does not, disconnect the power cord for a few seconds and then reconnect it.

7 Product specifications




Note

- Specifications and design are subject to change without notice.

Region codes

The type plate on the back or bottom of the home theatre shows which regions it supports.

Country	DVD
Europe, United Kingdom	
Asia Pacific, Taiwan, Korea	
Latin America	
Australia, New Zealand	
Russia, India	
China	

Media formats

- DVD-Video, DVD+R/+RW, DVD-R/-RW, DVD+R/-R DL, CD-R/CD-RW, Audio CD, Video CD/SVCD, Picture files, MP3 media, WMA media, DivX media, USB storage device

File formats

- Audio: .mp3, .wma
- Video: .avi, .divx, .mpg, .mpeg
- Picture: .jpg, .jpeg

Amplifier

- Total output power: 300W RMS (30% THD)
- Frequency response: 20 Hz-20 kHz / ± 3 dB
- Signal-to-noise ratio: > 65 dB (CCIR) / (A-weighted)
- Input sensitivity:
 - AUX: 2 V

Video

- Signal system: PAL / NTSC
- SCART output: 100 mV

Audio

- S/PDIF Digital audio input:
 - Coaxial: IEC 60958-3
 - Optical: TOSLINK
- Sampling frequency:
 - MP3: 32 kHz, 44.1 kHz, 48 kHz
 - WMA: 44.1 kHz, 48 kHz
- Constant bit rate:
 - MP3: 32 kbps - 320 kbps
 - WMA: 128 bps - 192 kbps

Radio

- Tuning range:
 - Europe/Russia/China: FM 87.5-108 MHz (50 kHz)
 - Asia Pacific/Latin America: FM 87.5-108 MHz (50/100 kHz)
- Signal-to-noise ratio: FM >45 dB
- Frequency response: FM 200 Hz-12.5 kHz / ± 6 dB

USB

- Compatibility: Hi-Speed USB (2.0)
- Class support: USB Mass Storage Class (MSC)
- File system: FAT16, FAT32

Main unit

- Power supply:
 - Europe/China/Russia/India: 220-240V~, 50 Hz
 - Latin America/Asia Pacific: 110-240V~, 50-60 Hz
- Power consumption: 55 W
- Standby power consumption: ≤ 0.9 W
- Dimensions (WxHxD): 360 x 58 x 325 mm
- Weight: 2.35 kg

Subwoofer

- Output power: 50 W RMS (30% THD)
- Impedance: 8 ohm
- Speaker drivers: 133 mm (5.25") woofer
- Dimensions (WxHxD): 160 x 267.5 x 265 mm
- Weight: 2.61 kg

Speakers

Centre speaker:

- Output power: 50 W RMS (30% THD)
- Speaker impedance: 4 ohm
- Speaker drivers: 1 x 70 mm (2.75") woofer
- Dimensions (WxHxD): 84.5 x 89 x 89 mm
- Weight: 0.27 kg

Front/Rear speaker:

- Output power: 4 x 50 W RMS (30% THD)
- Speaker impedance: 4 ohm
- Speaker drivers: 1 x 70 mm (2.75") woofer
- Dimensions (WxHxD): 84.5 x 89 x 89 mm
- Weight: 0.25-0.29 kg/each

Remote control batteries

- 2 x AAA-R03-1.5 V

Laser

- Type: Semiconductor laser GaAlAs (CD)
- Wave length: 645 - 665 nm (DVD), 770 - 800 nm (CD)
- Output power: 6 mW (DVD), 7 mW (VCD/CD)
- Beam divergence: 60 degrees.

8 Troubleshooting



Warning

- Risk of electric shock. Never remove the casing of the product.

To keep the warranty valid, never try to repair the product yourself.

If you have problems using this product, check the following points before you request service. If you still have a problem, get support at www.philips.com/support.

Main unit

The buttons on the home theatre do not work.

- Disconnect the home theatre from the power supply for a few minutes, then reconnect.

Picture

No picture.

- Make sure that the TV is switched to the correct source for the home theatre.
- If this happens when you change the TV system, press **▲** to open the disc compartment, and then **439** on the remote control to restore the default TV system.

Sound

No sound from home theatre speakers.

- Connect the audio cable from your home theatre to your TV or other devices (see 'Connect audio from TV and other devices' on page 8).
- Reset your home theatre to its factory settings (see 'Restore default settings' on page 14), then switch it off and switch on again.
- On your home theatre, press **SOURCE** repeatedly to select the correct audio input.

Distorted sound or echo.

- If you play audio from the TV through the home theatre, make sure that the TV is muted.

Audio and video are not synchronised.

- 1) Press and hold **AUDIO SYNC**. 2) Press the **Navigation buttons** within 5 seconds to synchronise the audio with the video.

Play

Cannot play a disc.

- Clean the disc.
- Make sure that the home theatre supports the type of disc (see 'Media formats' on page 15).
- Make sure that the home theatre supports the region code of the disc.
- If the disc is a DVD±RW or DVD±R disc, make sure that it is finalised.

Cannot play a DivX file.

- Make sure that the DivX file is encoded according to the 'Home Theatre Profile' with the DivX encoder.
- Make sure that the DivX file is complete.

DivX subtitles do not display correctly.

- Make sure that the subtitle file name is the same as the movie file name (see 'Subtitles' on page 10).
- Select the correct character set (see 'Subtitles' on page 10).

Cannot read the contents of a USB storage device.

- Make sure that the format of the USB storage device is compatible with the home theatre.
- Make sure that the file system on the USB storage device is supported by the home theatre.

'No entry' or 'x' sign appears on the TV.

- The operation is not possible.

9 Notice

This section contains the legal and trademark notices.

Copyright



**Be responsible
Respect copyrights**

This item incorporates copy protection technology that is protected by U.S. patents and other intellectual property rights of Rovi Corporation. Reverse engineering and disassembly are prohibited.

Copyright in the UK

Recording and playback of material may require consent. See Copyright Act 1956 and The Performers Protection Acts 1958 to 1972.

Mains fuse (UK only)

This information applies only to products with a UK mains plug.

This product is fitted with an approved molded plug. If you replace the fuse, use one with:

- the ratings shown on the plug,
- a BS 1362 approval, and
- the ASTA approval mark.

Contact your dealer if you are not sure about what type of fuse to use.

Caution: To conform with the EMC directive (2004/108/EC), do not detach the plug from the power cord.

Compliance



This product is in compliance with the essential requirements and other relevant provisions of Directives 2006/95/EC (Low Voltage), 2004/108/EC (EMC).

Trademarks



Manufactured under license from Dolby Laboratories. Dolby and the double-D symbol are trademarks of Dolby Laboratories.



DivX®, DivX Ultra®, DivX Certified® and associated logos are trademarks of Rovi Corporation or its subsidiaries and are used under license.

DivX Ultra® Certified to play DivX® video with advanced features and premium content.

ABOUT DIVX VIDEO: DivX® is a digital video format created by DivX, LLC, a subsidiary of Rovi Corporation. This is an official DivX Certified® device that plays DivX video. Visit divx.com for more information and software tools to convert your files into DivX videos.

ABOUT DIVX VIDEO-ON-DEMAND: This DivX Certified® device must be registered in order to play purchased DivX Video-on-Demand (VOD) movies. To obtain your registration code, locate the DivX VOD section in your device setup menu. Go to vod.divx.com for more information on how to complete your registration.

**CLASS 1
LASER PRODUCT**

10 Index

A

audio from TV and other devices	8
audio language for discs	12
auto standby	14

B

batteries	16
-----------	----

C

change password	13
character set	10
check current version	14
connect analogue audio cable	8
connect coaxial audio cable	8
connect coaxial audio cable	8
connect FM antenna	4, 11
connect home theatre	6
connect optical audio cable	8
connect speakers	6
connect to TV	7
connectors	4
consumer support	3
control play buttons	9

D

disc menu	12
discs	9
display brightness	14
display menu for MP3/JPEG	13
display menu for VCD/SVCD	13
disposal	3
DivX	10, 15
DivX subtitles	10

H

Home menu	9
-----------	---

L

language settings	12
lock disc	13

M

main unit overview	4
menu language for discs	12
musical slideshow	11

N

night mode	13
------------	----

O

onscreen menu language	12
------------------------	----

P

parental control	13
parental ratings	13
password	13
PBC (play back control)	13
picture options	11
picture settings	13
product serial number	3
programme radio stations	11

R

radio	11
recycling	3
remote control overview	5
repeat mode	9
restore default settings	14
rotate pictures	9

S

screen saver	14
setup menu	12
sleep timer	14
slideshow	11
sound mode	12
speakers placement	6
speakers setup	8
specifications	15
subtitle language for discs	12
supported file format	15
supported media formats	15
surround sound	12
synchronise picture and sound	9

T

time search	11
titles	11
trademarks	18
troubleshooting	17

U

update software	14
USB storage device	10

V

video options	11
video resolution	13
VOD code for DivX	10

Language Code

Abkhazian	6566
Afar	6565
Afrikaans	6570
Amharic	6577
Arabic	6582
Armenian	7289
Assamese	6583
Avestan	6569
Aymara	6589
Azerbaijani	6590
Bahasa Melayu	7783
Bashkir	6665
Belarusian	6669
Bengali	6678
Bihari	6672
Bislama	6673
Bokmål, Norwegian	7866
Bosanski	6683
Brezhoneg	6682
Bulgarian	6671
Burmese	7789
Castellano, Español	6983
Catalán	6765
Chamorro	6772
Chechen	6769
Chewa; Chichewa; Nyanja	7889
中文	9072
Chuang; Zhuang	9065
Church Slavonic; Slavonic	6785
Chuvash	6786
Corsican	6779
âesky	6783
Dansk	6865
Deutsch	6869
Dzongkha	6890
English	6978
Esperanto	6979
Estonian	6984
Euskara	6985
ᐃᐣᐣᐣᐣᐣᐣ	6976
Faroese	7079
Français	7082
Frysk	7089
Fijian	7074
Gaelic; Scottish Gaelic	7168
Gallegan	7176
Georgian	7565
Gikuyu; Kikuyu	7573
Guarani	7178
Gujarati	7185
Hausa	7265
Herero	7290
Hindi	7273
Hiri Motu	7279
Hrvatski	6779
Ido	7379
Interlingua (International)	7365
Interlingue	7365
Inuktitut	7385

Inupiaq	7375
Irish	7165
Íslenska	7383
Italiano	7384
Ivrit	7269
Japanese	7465
Javanese	7486
Kalaallisut	7576
Kannada	7578
Kashmiri	7583
Kazakh	7575
Kernewek	7587
Khmer	7577
Kinyarwanda	8287
Kirghiz	7589
Komi	7586
Korean	7579
Kuanyama; Kwanyama	7574
Kurdish	7585
Lao	7679
Latina	7665
Latvian	7686
Letzeburgesch;	7666
Limburgan; Limburger	7673
Lingala	7678
Lithuanian	7684
Luxembourgish;	7666
Macedonian	7775
Malagasy	7771
Magyar	7285
Malayalam	7776
Maltese	7784
Manx	7186
Maori	7773
Marathi	7782
Marshallese	7772
Moldavian	7779
Mongolian	7778
Nauru	7865
Navaho; Navajo	7886
Ndebele, North	7868
Ndebele, South	7882
Ndonga	7871
Nederlands	7876
Nepali	7869
Norsk	7879
Northern Sami	8369
North Ndebele	7868
Norwegian Nynorsk;	7878
Occitan; Provençal	7967
Old Bulgarian; Old Slavonic	6785
Oriya	7982
Oromo	7977
Ossetian; Ossetic	7983
Pali	8073
Panjabi	8065
Persian	7065
Polski	8076
Português	8084

Pushto	8083
Russian	8285
Quechua	8185
Raeto-Romance	8277
Romanian	8279
Rundi	8278
Samoan	8377
Sango	8371
Sanskrit	8365
Sardinian	8367
Serbian	8382
Shona	8378
Shqip	8381
Sindhi	8368
Sinhalese	8373
Slovensky	8373
Slovenian	8376
Somali	8379
Sotho; Southern	8384
South Ndebele	7882
Sundanese	8385
Suomi	7073
Swahili	8387
Swati	8383
Svenska	8386
Tagalog	8476
Tahitian	8489
Tajik	8471
Tamil	8465
Tatar	8484
Telugu	8469
Thai	8472
Tibetan	6679
Tigrinya	8473
Tonga (Tonga Islands)	8479
Tsonga	8483
Tswana	8478
Türkçe	8482
Turkmen	8475
Twi	8487
Uighur	8571
Ukrainian	8575
Urdu	8582
Uzbek	8590
Vietnamese	8673
Volapuk	8679
Walloon	8765
Welsh	6789
Wolof	8779
Xhosa	8872
Yiddish	8973
Yoruba	8979
Zulu	9085

