

Register your product and get support at
www.philips.com/welcome

HTS5591



EN User manual

PHILIPS

Contents

1 Using help	4	7 Use your home theater	18
Navigate the onscreen help	4	Choose sound	18
2 Help and support	5	Discs	20
Update your onscreen help	5	USB storage devices	22
Tutorials	6	Audio, video, and picture options	23
FAQs	6	Radio	24
Contact Philips	6	MP3 player	25
3 Notice	6	iPod or iPhone	25
Open source software	6	Use smartphone	26
RMVB end user agreement (Asia Pacific and China only)	6	Karaoke	27
Trademarks	7	Browse PC through DLNA	28
4 Important	8	EasyLink	29
Safety	8	8 Change settings	30
Care for your product	9	Picture	30
Care of the environment	9	Sound	31
3D health warning	9	Language	32
5 Your home theater	10	Parental control	32
Main unit	10	Energy saving	33
Remote control	10	Apply factory settings	33
6 Connect your home theater	12	9 Update software	34
Speakers	12	Check software version	34
Connectors	13	Update software through the Internet	34
Connect to TV	14	Update software through USB	34
Connect audio from TV and other devices	15	10 Product specifications	35
Computers and the Internet	16	11 Troubleshooting	39
Name your home theater	18	12 Language code	41
		13 Index	42

1 Using help

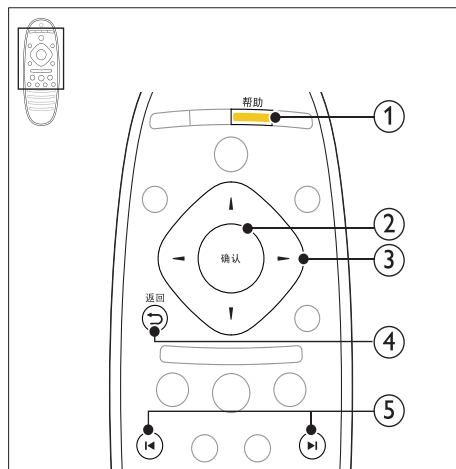
Philips is committed to develop products that contribute to a greener environment. To save paper and the environment, access the help on your home theater through the onscreen interface. The onscreen help contains all the information that you need to set up your home theater. However, if you prefer to print the user manual, download the PDF version from www.philips.com/support. Follow the instructions on the website to select your language, and then enter your model number.

Access the onscreen help by pressing **帮助** (yellow button) on your remote control.

The onscreen help has two panels.

- The left panel contains the **Contents** and **Index**. Navigate the **Contents** or **Index** to select a page.
- The right panel contains the content of each page. Select **Related topics** for additional help on the content.

Navigate the onscreen help



- ① **帮助**
Access the onscreen help.
- ② **确认**
Display the selected page.
- ③ **Navigation buttons**
 - Up: Scroll up or move to the previous page.
 - Down: Scroll down or move to the next page.
 - Right: Navigate to the right panel or next index entry.
 - Left: Navigate to the left panel or previous index entry.
- ④ **返回**
Move up in the **Contents** or **Index**.
From the right panel, move to the **Contents** on the left panel.
- ⑤ **◀ / ▶ (Previous/Next)**
 - **◀**: Display the last viewed page in history.
 - **▶**: Display the next page from history.

2 Help and support

Watch video tutorials, download a software update, and find answers to many frequently answered questions (FAQs) on your product at www.philips.com.

Update your onscreen help

Philips continually tries to improve its products. To make sure that your onscreen help is up to date with the latest information, update your home theater with the latest onscreen help. Download the latest help from www.philips.com/support.

What you need

- A USB flash drive, with at least 35MB of memory. The USB flash drive must be FAT or NTFS formatted. Do not use a USB hard drive.
- A computer with Internet access.
- An archive utility that supports the ZIP file format (for example, WinZip® for Microsoft® Windows® or StuffIt® for Macintosh®).

Step 1: Check the current version of help

Check the current version of onscreen help installed in your home theater. If the version is lower than the version available at www.philips.com/support, download and install the latest onscreen help.

The last two digits indicate the version of the onscreen help installed in your home theater. For example, if the version in the home theater is 'Subsystem SW: 35-00-00-05', '05' represents the version of the onscreen help currently installed.

Check the current version of onscreen help installed in your home theater. If the version is lower than the version available at www.philips.com/support, download and install the latest onscreen help.

The last two digits indicate the version of the onscreen help installed in your home theater. For example, if the version in the home theater is 'Subsystem SW: 35-00-00-05', '05' represents the version of the onscreen help currently installed.

- 1 Press **⬆** (Home).

- 2 Select **[Setup]**, and then press **确认**.
- 3 Select **[Advanced]** > **[Version Info.]**, and then press **确认**.

Step 2: Download the latest onscreen help

- 1 Connect a USB flash drive to your computer.
- 2 In your web browser, go to www.philips.com/support.
- 3 At the Philips support website, find your product and click on **User manuals**, and then locate the **User Manual Upgrade Software**.
 ↳ The help update is available as a zip file.
- 4 Save the zip file in the root directory of your USB flash drive.
- 5 Use the archive utility to extract the help update file in the root directory of the USB flash drive.
 ↳ A file named 'HTSxxxxxDFU.zip' is extracted under the **UPG_ALL** folder of your USB flash drive, 'xxxx' being the model number of your home theater.
- 6 Disconnect the USB flash drive from your computer.

Step 3: Update onscreen help



Caution

- Before you connect the USB flash drive to your home theater, make sure that there is no disc in the disc compartment, and the disc compartment is closed.

- 1 Switch on the TV.
- 2 Connect the USB flash drive containing the downloaded file to your home theater.
- 3 Press **⬆** (Home).
- 4 Enter **338** on the remote control.
 ↳ Follow the instructions on the TV to confirm the update. Do not switch off the home theater or remove the USB flash drive during the update.
- 5 Disconnect the USB flash drive from the home theater.



Warning

- If power fails during the update, do not remove the USB flash drive from the home theater.
- If an error occurs during the update, retry the procedure. If the error reoccurs, contact Philips Consumer Care.

Tutorials

To set up your home theater and get additional information, refer to the video tutorials at www.philips.com/support.

FAQs

If you have a problem, refer to the frequently asked questions (FAQs) for this home theater at www.philips.com/support.

If you still need help, contact Philips Consumer Care in your country.



Warning

- Do not attempt to repair your home theater yourself. This may cause severe injury, irreparable damage to your home theater, or void your warranty.

Contact Philips

If you contact Philips, you will be asked for the model and serial number of your product. The model number and serial number are on the back or bottom of your product. Note the numbers before you call Philips:

Model No. _____

Serial No. _____

3 Notice

This section contains the legal and trademark notices.

Open source software

Philips Electronics Singapore Pte Ltd hereby offers to deliver, upon request, a copy of the complete corresponding source code for the copyrighted open source software packages used in this product for which such offer is requested by the respective licenses. This offer is valid up to three years after product purchase to anyone in receipt of this information. To obtain source code, please contact open.source@philips.com. If you prefer not to use email or if you do not receive confirmation receipt within a week after mailing to this email address, please write to "Open Source Team, Philips Intellectual Property & Standards, P.O. Box 220, 5600 AE Eindhoven, The Netherlands". If you do not receive timely confirmation of your letter, please email to the email address above. The texts of the licenses and acknowledgements for open source software used in this product are included in the user manual.

RMVB end user agreement (Asia Pacific and China only)

Notes to End User:

By using this product with RealNetworks software and services, the end user agrees to the following terms of REALNETWORKS, INC:

- End User may only use the software for private, non-commercial use in accordance with the terms of RealNetworks EULA.
- End User is not allowed to modify, translate, reverse engineer, decompile, disassemble or use other means to discover the source code or otherwise replicate the functionality of the Real Format Client Code, except to the extent that this restriction is expressly prohibited by applicable law.

- RealNetworks Inc. disclaims all warranties and conditions other than those set forth in this Agreement which are in lieu of all other warranties, whether express and implied, including but not limited to any implied warranties or conditions of merchantability and fitness for a particular purpose; and effectively exclude all liability for indirect, special, incidental and consequential damages, such as but not limited to lost profits.

Trademarks



"Blu-ray 3D" and "Blu-ray 3D" logo are trademarks of Blu-ray Disc Association.



BONUSVIEW™

'BD LIVE' and 'BONUSVIEW' are trademarks of Blu-ray Disc Association.



'DVD Video' is a trademark of DVD Format/Logo Licensing Corporation.



Java and all other Java trademarks and logos are trademarks or registered trademarks of Sun Microsystems, Inc. in the United States and/or other countries.

x.v.Colour

'x.v.Colour' is a trademark of Sony Corporation.



Manufactured under license under U.S. Patent #'s: 5,451,942; 5,956,674; 5,974,380; 5,978,762; 6,226,616; 6,487,535; 7,392,195; 7,272,567; 7,333,929; 7,212,872 & other U.S. and worldwide patents issued & pending. DTS and the Symbol are registered trademarks, & DTS-HD, and DTS-HD Master Audio | Essential and the DTS logos are trademarks of DTS, Inc. Product includes software. © DTS, Inc. All Rights Reserved.



Dolby, Pro Logic, and the double-D symbol are trademarks of Dolby Laboratories.



DivX®, DivX Certified®, DivX Plus™ HD and associated logos are trademarks of DivX, Inc. and are used under license.

ABOUT DIVX VIDEO: DivX® is a digital video format created by DivX, Inc. This is an official DivX Certified® device that plays DivX video. Visit divx.com for more information and software tools to convert your files into DivX video.

ABOUT DIVX VIDEO-ON-DEMAND: This DivX Certified® device must be registered in order to play purchased DivX Video-on-Demand (VOD) movies. To obtain your registration code, locate the DivX VOD section in your device setup menu. Go to vod.divx.com for more information on how to complete your registration.



HDMI, the HDMI logo, and High-Definition Multimedia Interface are trademarks or registered trademarks of HDMI licensing LLC in the United States and other countries.

I 类
激光产品

4 Important

Read and understand all instructions before you use your home theater. If damage is caused by failure to follow instructions, the warranty does not apply.

Safety

Risk of electric shock or fire!

- Never expose the product and accessories to rain or water. Never place liquid containers, such as vases, near the product. If liquids are spilt on or into the product, disconnect it from the power outlet immediately. Contact Philips Consumer Care to have the product checked before use.
- Never place the product and accessories near naked flames or other heat sources, including direct sunlight.
- Never insert objects into the ventilation slots or other openings on the product.
- Where the mains plug or an appliance coupler is used as the disconnect device, the disconnect device shall remain readily operable.
- Disconnect the product from the power outlet before lightning storms.
- When you disconnect the power cord, always pull the plug, never the cable.

Risk of short circuit or fire!

- Before you connect the product to the power outlet, ensure that the power voltage matches the value printed on the back or bottom of the product. Never connect the product to the power outlet if the voltage is different.

Risk of injury or damage to the home theater!

- For wall-mountable products, use only the supplied wall mount bracket. Secure the wall mount to a wall that can support the combined weight of the product and the wall mount. Koninklijke Philips Electronics N.V. bears no responsibility for improper wall mounting that results in accident, injury or damage.
- For speakers with stands, use only the supplied stands. Secure the stands to the speakers tightly. Place the assembled stands on flat, level surfaces that can support the combined weight of the speaker and stand.

- Never place the product or any objects on power cords or on other electrical equipment.
- If the product is transported in temperatures below 5°C, unpack the product and wait until its temperature matches room temperature before connecting it to the power outlet.
- Visible and invisible laser radiation when open. Avoid exposure to beam.
- Do not touch the disc optical lens inside the disc compartment.
- Parts of this product can be made of glass. Handle with care to avoid injury and damage.

Risk of overheating!

- Never install this product in a confined space. Always leave a space of at least four inches around the product for ventilation. Ensure curtains or other objects never cover the ventilation slots on the product.

Risk of contamination!

- Do not mix batteries (old and new or carbon and alkaline, etc.).
- Remove batteries if they are exhausted or if the remote control is not to be used for a long time.
- Batteries contain chemical substances, they should be disposed of properly.

Risk of swallowing batteries!

- The product/remote control may contain a coin type battery, which can be swallowed. Keep the battery out of reach of children at all times!

Your product is designed and manufactured with high quality materials and components, which can be recycled and reused.



When this crossed-out wheeled bin symbol is attached to a product it means that the product is covered by the European Directive 2002/96/EC. Please inform yourself about the local separate collection system for electrical and electronic products.

Please act according to your local rules and do not dispose of your old products with your normal household waste.

Correct disposal of your old product helps to prevent potential negative consequences for the environment and human health.



Your product contains batteries covered by the European Directive 2006/66/EC, which cannot be disposed with normal household waste.

Please inform yourself about the local rules on separate collection of batteries because correct disposal helps to prevent negative consequences for the environmental and human health.

Care for your product

- Do not insert any objects other than discs into the disc compartment.
- Do not insert warped or cracked discs into the disc compartment.
- Remove discs from the disc compartment if you are not using the product for an extended period of time.
- Use only microfiber cloth to clean the product.

Care of the environment



3D health warning

If you or your family has a history of epilepsy or photosensitive seizures, consult a medical professional before exposing yourself to flashing light sources, rapid image sequences or 3D viewing.

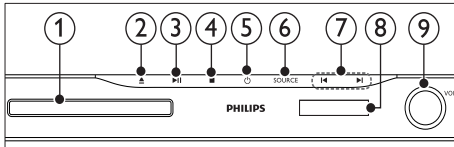
To avoid discomfort such as dizziness, headache or disorientation, we recommend not watching 3D for extended periods of time. If you experience any discomfort, stop watching 3D and do not immediately engage in any potentially hazardous activity (for example driving a car) until your symptoms have disappeared. If symptoms persist, do not resume watching 3D without consulting a medical professional first.

Parents should monitor their children during 3D viewing and ensure they do not experience any discomfort as mentioned above. Watching 3D is not recommended for children under six years of age as their visual system is not fully developed yet.

5 Your home theater

Congratulations on your purchase, and welcome to Philips! To fully benefit from the support that Philips offers, register your home theater at www.philips.com/welcome.

Main unit



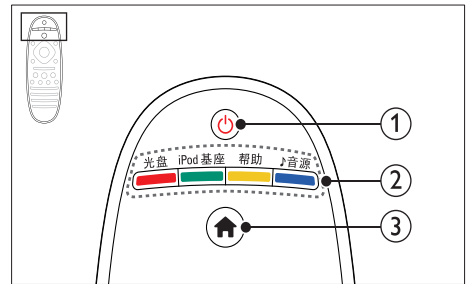
- ① **Disc compartment**
- ② **▲ (Open/Close)**
Press and hold for three seconds to open or close the disc compartment, or eject the disc.
- ③ **▶|| (Play/Pause)**
Start, pause or resume play.
- ④ **■ (Stop)**
Stop play.
- ⑤ **⏻ (Standby-On)**
Switch the home theater on or to standby.
- ⑥ **SOURCE**
Select an audio or video source for the home theater.
- ⑦ **⏮ / ⏭**
 - Skip to the previous or next track, chapter or file.
 - In radio mode, select a preset radio station.
- ⑧ **Display panel**
- ⑨ **Volume control wheel**

Remote control

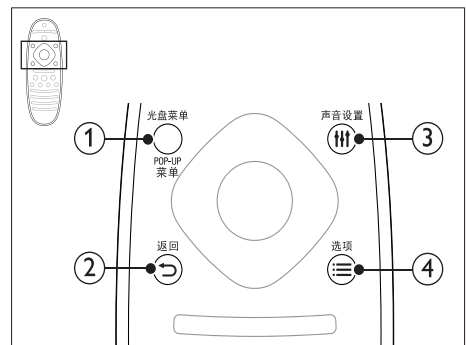
This section includes an overview of the remote control.

Overview

Control your home theater with the remote control.

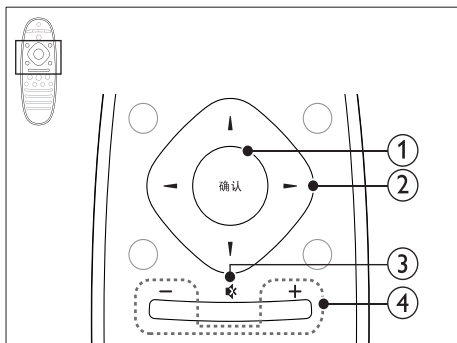


- ① **⏻ (Standby-On)**
 - Switch the home theater on or to standby.
 - When EasyLink is enabled, press and hold for at least three seconds to switch all connected HDMI CEC compliant devices to standby.
- ② **Source buttons / Color buttons**
 - Color buttons:** Select tasks or options for Blu-ray discs.
 - 光盘 : Switch to disc source.
 - iPod 基座 : Switch to Philips dock for iPod or iPhone.
 - 帮助 : Access the on-screen help.
 - 音源 : Select an audio input source or radio source.
- ③ **🏠 (Home)**
Access the home menu.

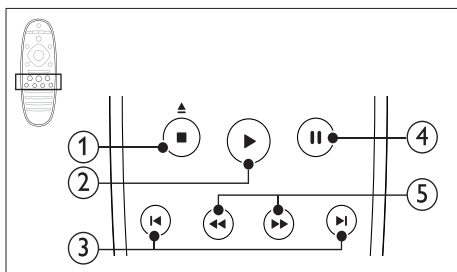


- ① **光盘菜单 / POP-UP 菜单**
Access or exit the disc menu when you play a disc.
- ② **↶ 返回**
 - Return to a previous menu screen.
 - In radio mode, press and hold to erase the current preset radio stations.

- ③ **声音设置**
Access or exit sound options.
- ④ **选项**
- Access more play options while playing a disc or a USB storage device.
 - In radio mode, set a radio station.

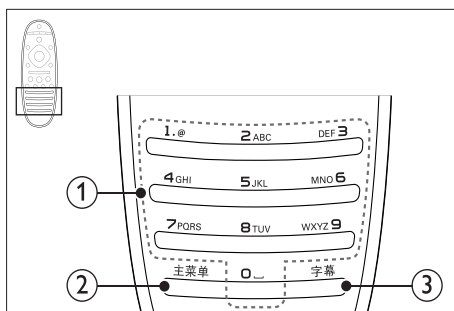


- ① **确认**
Confirm an entry or selection.
- ② **Navigation buttons**
- Navigate menus.
 - In radio mode, press left or right to start auto search.
 - In radio mode, press up or down to tune the radio frequency.
- ③ **※ (Mute)**
Mute or restore volume.
- ④ **+/- (Volume)**
Increase or decrease volume.



- ① **■ (Stop) / ▲ (Eject/ Open/Close)**
- Stop play.
 - Press and hold for three seconds to open or close the disc compartment, or eject the disc.

- ② **▶ (Play)**
Start or resume play.
- ③ **◀ / ▶ (Previous/Next)**
- Skip to the previous or next track, chapter or file.
 - In radio mode, select a preset radio station.
- ④ **⏸ (Pause)**
Pause play.
- ⑤ **◀◀ / ▶▶ (Fast Backward/Fast Forward)**
Search backwards or forward. Press repeatedly to change the search speed.



- ① **Alphanumeric buttons**
Enter values or letters (using SMS style entry).
- ② **主菜单**
Access the main menu of a video disc.
- ③ **字幕**
- Select subtitle language for video.
 - In radio mode, toggle between the stereo and mono sounds.

EasyLink controls

With Easylink, you can control your home theater and the TV with the following buttons on your home theater remote control (see 'EasyLink' on page 29).

- ⏻ (Standby-On):** Press and hold to switch your home theater, TV and the connected devices to standby.
- ▶ (Play):** When a video disc is in the disc compartment, wake up the TV from standby, and then play a disc.

6 Connect your home theater

This section helps you connect your home theater to a TV and other devices.

For information about the basic connections of your home theater and accessories, see the quick start guide. For a comprehensive interactive guide, see www.connectivityguide.philips.com.

Note

- For identification and supply ratings, refer to the type plate at the back or bottom of the product.
- Before you make or change any connections, make sure that all devices are disconnected from the power outlet.

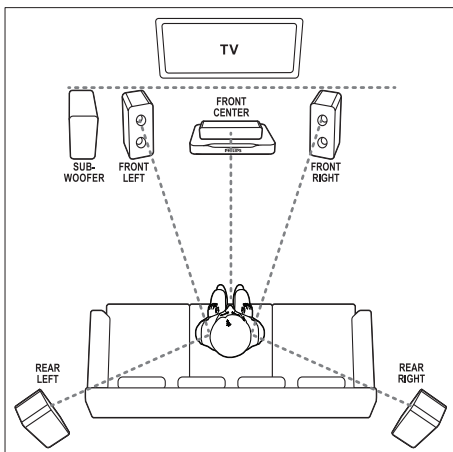
Speakers

Position, connect, and set up your speakers for best surround sound.

Position

Speaker position plays a critical role in setting up a surround sound effect.

For best results, place your speakers and the subwoofer as shown below.



Note

- Surround sound depends on factors such as room shape and size, type of wall and ceiling, windows and reflective surfaces, and speaker acoustics. Experiment with the speaker positions to find the optimum setting for you.

Follow these general guidelines, and then set up your speakers.

- 1 Seating position:**
This is the center of your listening area.
- 2 FRONT CENTER (front center) speaker:**
Place the center speaker directly in front of the seating position, either above or below your TV. Make sure that it is close to your ear height when you are seated.
- 3 FRONT LEFT (front left) and FRONT RIGHT (front right) speakers:**
Place the left and right speakers in the front, and equidistant from the center speaker in an arc, so that all the three speakers are at same distance from your seating position. For best effect, point the speakers towards the seating position and place the speakers close to the ear level (when seated).
- 4 REAR LEFT (rear left) and REAR RIGHT (rear right) speakers:**
Place the rear surround speakers to the left and right side of your seating position, either in line with it or slightly behind it. For best effect, point the speakers towards the seating position and place the speakers just above the ear level (when seated).
- 5 SUBWOOFER (subwoofer):**
Place the subwoofer at least one meter to the left or right of the TV. Leave about ten centimeter clearance from the wall.

Connect

Connect your speakers and the subwoofer to your home theater as described in the quick start guide.

Setup

Set up your speakers through the speaker setup menu.

- 1 Connect your speakers and subwoofer as described in the Quick start guide.
- 2 Press **⬆** (**Home**) on your home theater remote control, and select **[Setup] > [Audio] > [Speaker Setup]**.
- 3 Enter the distance for each speaker, and then listen to the test tones and change the volume. Experiment a little with the speaker positions to find the ideal setting.

Wireless rear speakers

Convert the rear speakers of your home theater into wireless speakers by using a wireless module.

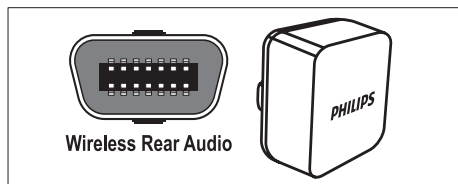
- The wireless transmitter connects to the **Wireless Rear Audio** connector on your home theater.
- The wireless receiver connects to the rear surround speakers and the power supply.

For more information, refer to the user manual of your wireless module.

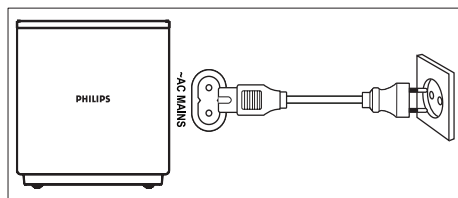
Wireless module - RWSS5510

Purchase the wireless module RWSS5510 (sold separately) from a Philips authorized dealer.

Wireless transmitter:



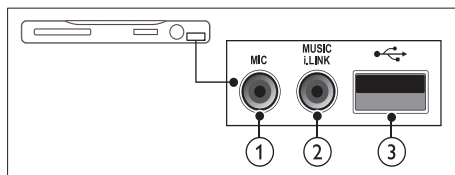
Wireless receiver:



Connectors

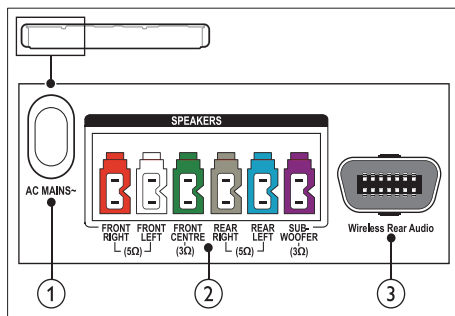
Connect other devices to your home theater.

Front



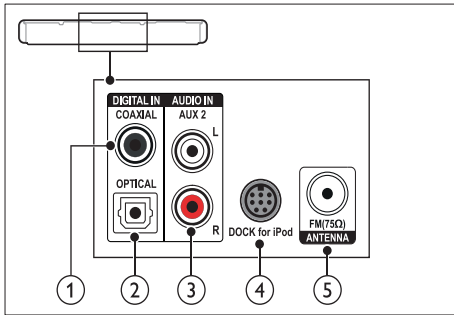
- ① **MIC (Available only in Asia Pacific and China)**
Audio input from a microphone.
- ② **MUSIC iLINK**
Audio input from an MP3 player.
- ③ **↔ (USB)**
 - Audio, video or picture input from a USB storage device.
 - Connect to a Wi-Fi dongle (Model: Philips WUB110, sold separately).

Rear left



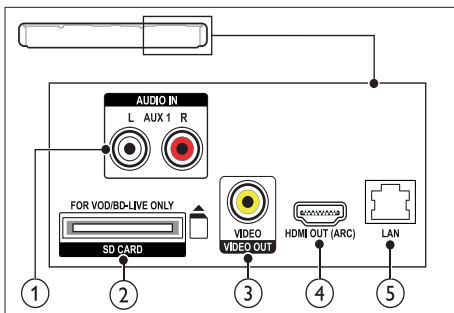
- ① **AC MAINS~ (□□□□)**
Connect to the power supply.
- ② **SPEAKERS**
Connect to the supplied speakers and subwoofer.
- ③ **Wireless Rear Audio**
Connect to a Philips wireless module. (Model: Philips RWSS5510, sold separately)

Rear center



- ① **DIGITAL IN-OPTICAL**
Connect to an optical audio output on the TV or a digital device.
- ② **DIGITAL IN-COAXIAL**
Connect to a coaxial audio output on the TV or a digital device.
- ③ **AUDIO IN-AUX 2**
Connect to an analog audio output on the TV or an analog device.
- ④ **DOCK for iPod**
Connect to a Philips dock for iPod or iPhone. (Model: Philips DCK3060/DCK3061)
- ⑤ **ANTENNA FM 75 Ω**
Signal input from an antenna, cable or satellite.

Rear right



- ① **AUDIO IN-AUX 1**
Connect to an analog audio output on the TV or an analog device.
- ② **VIDEO OUT-VIDEO**
Connect to the composite video input on the TV.

- ③ **HDMI OUT (ARC)**
Connect to the HDMI input on the TV.
- ④ **LAN**
Connect to the LAN input on a broadband modem or router.

Connect to TV

Connect your home theater to a TV to watch videos. You can listen to audio from TV programs through your home theater speakers. Use the best quality connection available on your home theater and TV.

Option 1: Connect to TV through HDMI (ARC)

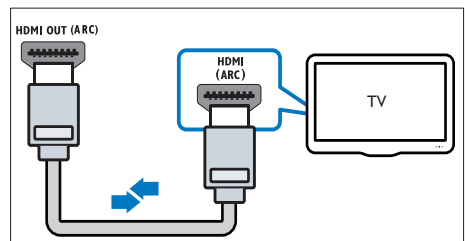
Best quality video

Your home theater supports HDMI version 1.4 - Audio Return Channel (ARC). If your TV is HDMI ARC compliant, connect your home theater to the TV through the HDMI ARC connection for easy and quick setup.

With HDMI ARC, you do not need an additional audio cable to play audio from TV through your home theater.

- 1 Using a High Speed HDMI cable, connect the **HDMI OUT (ARC)** connector on your home theater to the **HDMI ARC** connector on the TV.

The **HDMI ARC** connector on the TV might be labeled **HDMI IN** or **HDMI**. For details on TV connectors, see the TV user manual.



- 2 On your TV, turn on HDMI-CEC. For details, see the TV user manual.
 - ↳ When you play a disc on your home theater, the video is automatically displayed on TV and the audio is automatically played on the home theater.

- 3 If audio from the TV does not play automatically on your home theater, set up the audio manually (see 'Set up audio for connected devices' on page 16).

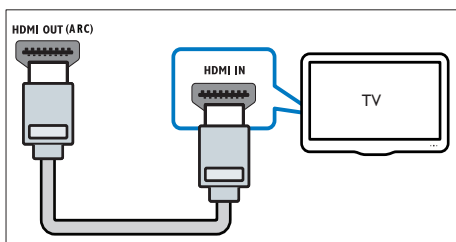
Option 2: Connect to TV through HDMI

Best quality video

If your TV is not HDMI ARC compliant, connect your home theater to the TV through a standard HDMI connection.

With a standard HDMI connection, you need an additional audio cable to play the audio from the TV through your home theater (see 'Connect audio from TV and other devices' on page 15).

- 1 Using a High Speed HDMI cable, connect the **HDMI OUT (ARC)** connector on your home theater to the **HDMI IN** connector on the TV.
The HDMI connector on the TV might be labeled **HDMI IN**.



- 2 On your TV, turn on HDMI-CEC. For details, see the TV user manual.
↳ When you play a disc on your home theater, the video is automatically displayed on TV and the audio is automatically played on the home theater.
- 3 To play audio from TV programs through your home theater, connect an additional audio cable (see 'Connect audio from TV and other devices' on page 15).
- 4 If audio from the TV does not play automatically on your home theater, set up the audio manually (see 'Set up audio for connected devices' on page 16).



Note

- If your TV has a DVI connector, you can use an HDMI/DVI adapter to connect to TV.

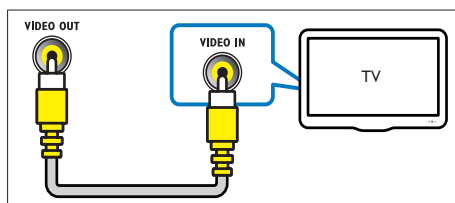
Option 3: Connect to the TV through composite video

Basic quality video

If your TV does not have HDMI connectors, connect your home theater to the TV through a composite connection. A composite connection does not support high-definition video.

With a composite connection, you need an additional audio cable to play the audio from the TV through your home theater (see 'Connect audio from TV and other devices' on page 15).

- 1 Using a composite video cable, connect the **VIDEO** connector on your home theater to the composite video connector on the TV.
The composite video connector might be labeled **AV IN**, **VIDEO IN**, **COMPOSITE**, or **BASEBAND**.



- 2 On your TV, switch to the correct video input.
- 3 To play audio from TV programs through your home theater, connect an additional audio cable (see 'Connect audio from TV and other devices' on page 15).

On your home theater, press **SOURCE** repeatedly to select the correct audio input.

Connect audio from TV and other devices

Play audio from TV or other devices through your home theater.

Use the best quality connection available on your TV, home theater, and other devices.



Note

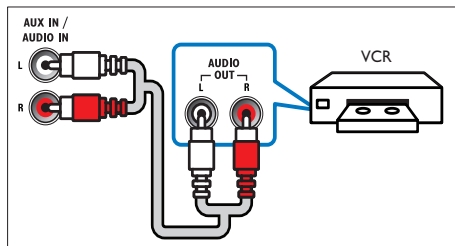
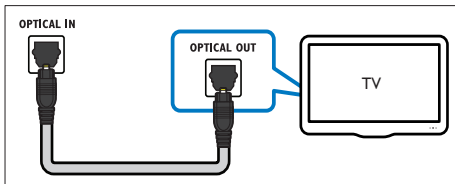
- The audio connections in this user manual are only recommendations. You can use other connections too.
- When your home theater and TV are connected through **HDMI ARC**, an audio connection is not required.

Option 1: Connect audio through a digital optical cable

Best quality audio

Using an optical cable, connect the **OPTICAL** connector on your home theater to the **OPTICAL OUT** connector on the TV or other device.

The digital optical connector might be labeled **SPDIF**, **SPDIF OUT**, or **OPTICAL**.

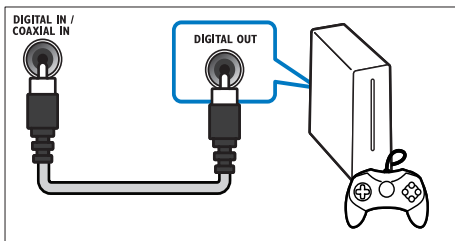


Option 2: Connect audio through a digital coaxial cable

Good quality audio

Using a coaxial cable, connect the **COAXIAL** connector on your home theater to the **COAXIAL/DIGITAL OUT** connector on the TV or other device.

The digital coaxial connector might be labeled **DIGITAL AUDIO OUT**.



Option 3: Connect audio through analog audio cables

Basic quality audio

Using an analog cable, connect the **AUX** connectors on your home theater to the **AUDIO OUT** connectors on the TV or other device.

Set up audio for connected devices

When you connect a device to your home theater, check the audio settings.

- 1 On your TV and other devices, turn on HDMI-CEC. For details, see the user manual of the TV and the other device.
- 2 Select 'Amplifier' from the TV speakers menu. For details, see the TV user manual.
- 3 On your home theater, turn on System Audio Control, and then map the audio of the connected device to the correct connectors on your home theater (see 'Play audio from home theater' on page 30).

If the connected device is not HDMI-CEC compliant, press **SOURCE** repeatedly on your home theater to select the correct audio input.

Computers and the Internet

Connect your home theater to your computer network and the internet, and enjoy:

- **Multimedia content streamed from your computer:** Play music, photo, and video from a computer or other media server on your network (see 'Browse PC through DLNA' on page 28).
- **Software update:** Update the home theater software through the network (see 'Update software through the Internet' on page 34).



Caution

- Before you try to connect the home theater to a computer network, familiarize yourself with the network router, media server software and networking principles. If necessary, read documentation that accompanies the network components. Philips is not responsible for lost, damaged, or corrupt data.

Wired connection

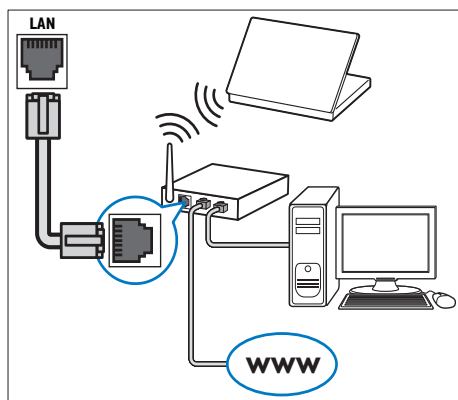
Connect your home theater to your router through a network cable.

What you need

- A network router (with DHCP enabled).
- A network cable (RJ45 straight cable).
- A computer with media server software installed (see 'Browse PC through DLNA' on page 28).
- For software update, make sure that the network router has access to the Internet, and is not restricted by firewalls or other security systems.

Set up the wired network

Connect your home theater to your router as shown below, and then switch on the devices.



- 1 Connect the home theater to a network router through a wired connection (see 'Wired connection' on page 17).
- 2 Turn on your TV, and switch to the correct source for the home theater.
- 3 Press **⬆** (Home).
- 4 Select **[Setup]**, and then press **确认**.
- 5 Select **[Network]** > **[Network Installation]** > **[Wired (Ethernet)]**, and then press **确认**.
- 6 Follow the instructions on the TV to complete the setup.
 - ➔ The home theater connects to the internet. If connection fails, select **[Retry]**, and then press **确认**.
- 7 Select **[Finish]**, and then press **确认** to exit.

Check wired network settings

- 1 Press **⬆** (Home).
- 2 Select **[Setup]**, and then press **确认**.
- 3 Select **[Network]** > **[View Network Settings]**, and then press **确认**.
 - ➔ The current network settings are displayed.

Wireless connection

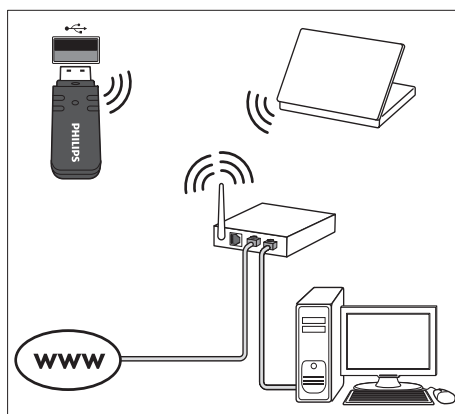
Connect your home theater to your router through a wireless connection.

What you need

- A network router (with DHCP enabled).
- A Wi-Fi dongle (Model: Philips WUB1110).
- A computer with media server software installed (see 'Browse PC through DLNA' on page 28).
- For software update, make sure that the network router has access to the Internet and is not restricted by firewalls or other security systems.

Set up the wireless network

Connect your home theater to your router as shown below, and then switch on the devices.



- 1 Connect the home theater to a network router through a wireless connection (see 'Wireless connection' on page 17).
- 2 Turn on your TV, and switch to the correct source for the home theater.
- 3 Press **⬆** (Home).

- 4 Select **[Setup]**, and then press 确认.
- 5 Select **[Network] > [Network Installation] > [Wireless (Wi-Fi)]**, and then press 确认.
- 6 Follow the instructions on the TV to complete the setup.
 - ↳ The home theater connects to the internet. If connection fails, select **[Retry]**, and then press 确认.
- 7 Select **[Finish]**, and then press 确认 to exit.

Check wireless network settings

- 1 Press **⬆ (Home)**.
- 2 Select **[Setup]**, and then press 确认.
- 3 Select **[Network] > [View Wireless Settings]**, and then press 确认.
 - ↳ The current Wi-Fi settings are displayed.

Name your home theater

To easily identify your home theater on a network, name your home theater.

- 1 Turn on your TV, and switch to the correct source for the home theater.
- 2 Press **⬆ (Home)**.
- 3 Select **[Setup]**, and then press 确认.
- 4 Select **[Network] > [Name your Product:]**, and then press 确认.
- 5 Press the **Alphanumeric buttons** to enter the name.
- 6 Select **[Done]**, and then press 确认 to exit.

7 Use your home theater

This section helps you use the home theater to play media from a wide range of sources.

Before you start

- Make the necessary connections described in the Quick start guide and the user manual.
- Switch the TV to the correct source for the home theater.

Choose sound

This section helps you choose the ideal sound for your video or music.

- 1 Press **⌂ 声音设置**.
- 2 Press **Navigation buttons** (left/ right)to access the sound options on the display.

Sound settings	Description
SOUND	Select a sound mode.
SURROUND	Select surround sound or stereo sound.
TREBLE	Change the high frequency output.
MID	Change the middle frequency output.
BASS	Change the low frequency output.
AUD SYNC	Delay the audio to match the video.

- 3 Select an option, and then press 确认.
- 4 Press **↶ 返回** to exit.

If you do not press a button within one minute, the menu exits automatically.

DivX

Play DivX videos from :

- a disc (see 'Discs' on page 20),
- a USB storage device (see 'USB storage devices' on page 22).



Note

- To play DivX DRM protected files from a disc or a USB storage device, connect your home theater to a TV through an HDMI cable.

VOD code for DivX

Before you purchase DivX videos and play them on your home theater, register the home theater on www.divx.com using the DivX VOD code.

- 1 Press **⬆** (Home).
- 2 Select **[Setup]**, and then press **确认**.
- 3 Select **[Advanced]** > **[DivX® VOD Code]**, and then press **确认**.
 - ➡ The DivX VOD registration code for your home theater is displayed.

Subtitles

If your video has subtitles in multiple languages, select a subtitle language.

- 1 While playing video, press **字幕** to select a language.



Note

- Make sure that the subtitle file has the exact same name as the video file. For example, if the video file is named "movie.avi", save the subtitle file as "movie.srt" or "movie.sub".
- Your home theater can play subtitle files in the following formats - .srt, .sub, .txt, .ssa, .ass, smi, and .sami. These files do not appear on the file navigation menu.
- If the subtitles do not appear correctly, change the character set.

Subtitle character set

If the subtitles do not appear correctly, change the character set that supports the DivX or RMVB/RM subtitle.

- 1 Press **≡ 选项**.
 - ➡ The options menu is displayed.
- 2 Press the **Navigation buttons** to select **[Character Set]**, and then press **确认**.
- 3 Select a character set.

Asia Pacific and China

Character Set	Language
[Standard]	Albanian, Danish, Dutch, English, Finnish, French, Gaelic, German, Italian, Kurdish (Latin), Norwegian, Portuguese, Spanish, Swedish, Turkish
[Chinese]	Simplified Chinese
[Chinese-Traditional]	Traditional Chinese
[Korean]	English and Korean

Sound mode

Select predefined sound modes to suit your video or music.

- 1 Press **≡ 声音设置**.
- 2 Select **SOUND**, and then press **确认**.
- 3 Press the **Navigation buttons** (up/down) to select a setting on the display:
 - **MOVIE**: Enjoy a truly cinematic audio experience, specially enhanced for movies.
 - **MUSIC**: Recreate the original recording environment of your music, in the studio or at a concert.
 - **ORIGINAL**: Experience the original sound of your movies and music, without added sound effects.
 - **NEWS**: Hear every word with optimized speech and clear vocals.
 - **GAMING**: Enjoy thrilling arcade sounds, ideal for action-packed video games or loud parties.
- 4 Press **确认** to confirm.

Surround sound mode

Experience an immersive audio experience with surround sound modes.

- 1 Press **III** 声音设置.
- 2 Select **SURROUND**, and then press **确认**.
- 3 Press the **Navigation buttons** (up/down) to select a setting from your display:
 - **AUTO**: Surround sound based on the audio stream.
 - **5CH STER**: Enhanced stereo sound. Ideal for party music.
 - **MULTI-CH**: Immersive multi-channel sound for an enhanced movie experience.
 - **STEREO**: Two-channel stereo sound. Ideal for listening to music.
- 4 Press **确认** to confirm.

Equalizer

Change the high frequency (treble), mid frequency (mid), and low frequency (bass) settings of the home theater.

- 1 Press **III** 声音设置.
- 2 Select **TREBLE**, **MID** or **BASS**, and then press **确认**.
- 3 Press the **Navigation buttons** (up/down) to change the frequency.
- 4 Press **确认** to confirm.

Discs

Your home theater can play DVDs, VCDs, CDs, and Blu-ray discs. It can also play discs that you've made at home, such as CD-R discs of photos and music.

What you need

For audio or 2D video:

- Audio and video connection between your home theater and the TV.
- An audio or a video disc.

For 3D video:

- A 3D TV.
- An HDMI connection between your home theater and the TV.
- A Blu-ray 3D disc.
- A pair of 3D glasses that are compatible with your 3D TV.

Play discs

- 1 Insert a disc into the home theater.
 - ↳ Your TV switches to the correct source and the disc plays automatically.
- 2 If the disc does not play automatically, press **DISC** or select **[play Disc]** in the home menu, and then press **确认**.
- 3 For a 3D video, put on your 3D glasses.
- 4 Press the play buttons to control play (see 'Play buttons' on page 21).

Note

- For a 3D video, during search forward or backward, and in some other play modes, the video displays in 2D. It returns to 3D display when you play normally again.

Tip

- To avoid flickering, change the brightness of the display (see 'Display panel' on page 33).

Play RMVB or RM file

Available only in Asia Pacific and China

An Real Media Variable Bitrate (RMVB) and RealMedia (RM) file contains both audio and video. You can copy an RMVB or RM file from your computer onto a recordable disc or USB storage device, and play them from your home theater.

- 1 Play a disc (see 'Play discs' on page 20) or USB storage device (see 'Play files' on page 22) that contains a RMVB or RM file.

Note

- Make sure that the file extension is '.RMVB' or '.RM'.
- Make sure that the subtitle file has the exact same name as the video file (see 'Subtitles' on page 19).
- If the subtitles do not appear correctly, change the character set (see 'Subtitle character set' on page 19).

Play buttons

Button	Action
Navigation buttons	Navigate menus.
确认	Confirm an entry or selection.
▶ (Play)	Start or resume play.
⏸	Pause play.
■	Stop play.
◀ / ▶	Skip to the previous or next track, chapter or file.
◀◀ / ▶▶	Fast backwards or fast forwards. Press repeatedly to change the search speed.
Navigation buttons (up/down)	Rotate the picture clockwise or counter-clockwise.
字幕	Select subtitle language for video.
光盘菜单 / POP-UP 菜单	Access or exit the disc menu.
≡ 选项	Access the advanced options when you play your audio, video, or media files (see 'Audio, video, and picture options' on page 23).

For video formats such as DivX and WMV:

- To stop play, press ■.
- To resume the video from where you stopped, press ▶ (Play).
- To play the video from the start, press 确认.

Play 3D discs in 2D mode

If you do not have a 3D TV, watch the 3D disc in 2D mode.

- 1 Press ⬆ (Home).
- 2 Select **[Setup]** > **[Video]** > **[Watch 3D video]** > **[Off]**.
- 3 Press 确认.
- 4 Play your Blu-ray 3D disc.
↳ The 3D video is displayed in 2D.

Display menu for VCD and SVCD

Display the content menu on VCD and SVCD discs.

- 1 Press ⬆ (Home).

- 2 Select **[Setup]** > **[Preference]**, and then press 确认.
- 3 Select **[VCD PBC]** > **[On]**, and then press 确认.

Note

- To skip the content menu, select **[Off]**.

Synchronize picture and sound

If the audio and video are not synchronized, delay the audio to match the video.

- 1 Press 声音设置.
- 2 Select **AUD SYNC**, and then press 确认.
- 3 Press the **Navigation buttons (up/down)** to synchronize the audio with the video.
- 4 Press 确认 to confirm.

Bonus View on Blu-ray

On Blu-ray discs that support the Bonus View, enjoy extra content, such as a director's commentary, while you watch the main feature. Bonus View is also known as picture-in-picture.

- 1 Enable BonusView (or Picture-In-Picture) in the Blu-ray disc menu.
- 2 While you play the main feature, press ≡ 选项.
↳ The options menu is displayed.
- 3 Select **[PIP Selection]** > **[PIP]**, and then press 确认.
↳ PIP options [1]/[2] depend on the video content.
↳ The picture-in-picture video is displayed in a small window.
- 4 Select **[2nd Audio Language]** or **[2nd Subtitle Language]**, then press 确认.
- 5 Select the language, and then press 确认.

Note

- To switch off Bonus View, press ≡ 选项, select **[PIP Selection]** > **[Off]**, and then press 确认.

BD-Live on Blu-ray

On Blu-ray discs with BD-Live content, access additional features, such as internet chats with the director, latest movie trailers, games, wallpaper, and ringtones.

What you need

- a Blu-ray disc with BD-Live content
- an internet connection
- a USB storage device, with at least 1GB of memory

Note

- BD-Live services vary from country to country, and depend on the disc.
- When you use BD-Live, data on the disc and home theater are accessed by the content provider.

Access BD-Live with a USB storage device

- 1 Connect your home theater to the home network and internet (see 'Computers and the Internet' on page 16).
- 2 Connect the USB storage device to the home theater.
 - The USB storage device is used to store the downloaded BD-Live content.
- 3 Select the BD-Live icon in the disc menu, and then press **确认**.
↳ BD-Live starts to load. The loading time depends on the disc and your internet connection.
- 4 Press the **Navigation buttons** to navigate BD-Live, and then press **确认** to select an item.

Clear memory

If your storage device does not have enough memory for the BD-Live content, clear the memory on the storage device.

- 1 Press **⬆ (Home)**.
- 2 Select **[Setup]**, and then press **确认**.
- 3 Select **[Advanced] > [Clear memory]**, and then press **确认**.
↳ This clears the local memory and deletes the BD-Live files that you downloaded on your storage device.

Disable BD-Live

To restrict access to BD-Live, turn on the BD-Live security.

- 1 Press **⬆ (Home)**.
- 2 Select **[Setup]**, and then press **确认**.
- 3 Select **[Advanced] > [BD-Live security] > [On]**, and then press **确认**.
↳ BD-Live access is restricted.

Note

- You cannot restrict internet access on commercial Blu-ray discs.

USB storage devices

Enjoy pictures, audio and video on a USB storage device.

What you need

- A USB storage device that is formatted for FAT or NTFS file systems, and complies with the Mass Storage Class.
- A USB extension cable, if the USB storage device does not fit into the connector.

Note

- You can use digital cameras connected by USB if they can play the files without using a special computer program.
- To play DivX DRM - protected files from a USB storage device, connect your home theater to a TV through an HDMI cable.

Play files

- 1 Connect the USB storage device to the home theater.
- 2 Press **⬆ (Home)**.
↳ The home menu is displayed.
- 3 Select **[browse USB]**, and then press **确认**.
↳ A content browser is displayed.
- 4 Select a file, and then press **确认**.
- 5 Press the playback buttons to control play.

Play buttons

Button	Action
Navigation buttons	Navigate menus.
确认	Confirm an entry or selection.
▶ (Play)	Start or resume play.
II	Pause play.
■	Stop play.
◀ / ▶	Skip to the previous or next track, chapter or file.
◀◀ / ▶▶	Fast backwards or fast forwards. Press repeatedly to change the search speed.
Navigation buttons (up/down)	Rotate the picture clockwise or counter-clockwise.
字幕	Select subtitle language for video.
≡ 选项	Access the advanced options when you play your audio, video, or media files (see 'Audio, video, and picture options' on page 23).

For video formats such as DivX and WMV:

- To stop play, press ■.
- To resume the video from where you stopped, press ▶ (Play).
- To play the video from the start, press 确认.

Audio, video, and picture options

Use advanced features when you play audio, video, or media files from a disc or a USB storage device.

Audio options

While playing audio, repeat an audio track, a disc, or a folder.

- 1 Press ≡ 选项 repeatedly to cycle through the following functions:
 - **RPT TRAC / RPT FILE:** Repeat the current track or file.
 - **RPT DISC / RPT FOLD:** Repeat all the tracks on the disc or the folder.
 - **RPT RAND:** Play audio tracks in random order.
 - **RPT OFF:** Turn off the repeat mode.

Video options

While watching video, select options such as subtitles, audio language, time search, and picture settings. Depending on the video source, some options are not available.

- 1 Press ≡ 选项.
 - ↳ The video options menu is displayed.
- 2 Press the **Navigation buttons** and 确认 to select and change:
 - **[Audio Language]:** Select audio language for video.
 - **[Subtitle Language]:** Select subtitle language for video.
 - **[Subtitle Shift]:** Change the subtitle position on the screen.
 - **[Info]:** Display information about what is playing.
 - **[Character Set]:** Select a character set that supports the DivX subtitle.
 - **[Time Search]:** Skip to a specific part of the video by entering the time of the scene.
 - **[2nd Audio Language]:** Select the second audio language for Blu-ray video.
 - **[2nd Subtitle Language]:** Select the second subtitle language for Blu-ray video.
 - **[Titles]:** Select a specific title.
 - **[Chapters]:** Select a specific chapter.
 - **[Karaoke]** (Available only in Asia Pacific and China): Change the karaoke settings.
 - **[Angle List]:** Select a different camera angle.
 - **[Menus]:** Display the disc menu.
 - **[PIP Selection]:** Display Picture-in-Picture window when playing a Blu-ray disc that supports the Bonus View.
 - **[Zoom]:** Zoom into a video scene or picture. Press the **Navigation buttons** (left/right) to select a zoom factor.
 - **[Repeat]:** Repeat a chapter or title.
 - **[Repeat A-B]:** Mark two points within a chapter or track to repeat play, or turn off the repeat mode.
 - **[Picture Settings]:** Select a predefined color setting.

Picture options

While viewing a picture, zoom into the picture, rotate it, add animation to a slideshow, and change the picture settings.

- 1 Press 选项.
↳ The picture options menu appears.
- 2 Press the **Navigation buttons** and 确认 to select and change the following settings:
 - **[Rotate +90]**: Rotate the picture 90 degree clockwise.
 - **[Rotate -90]**: Rotate the picture 90 degree counter-clockwise.
 - **[Zoom]**: Zoom into a video scene or picture. Press the **Navigation buttons** (left/right) to select a zoom factor.
 - **[Info]**: Display picture information.
 - **[Duration per slide]**: Select the display speed for each picture in a slide show.
 - **[Slide Animation]**: Select animation for the slide show.
 - **[Picture Settings]**: Select a predefined color setting.
 - **[Repeat]**: Repeat a selected folder.

Slideshows

While playing audio, access fun features such as picture and musical slideshows.

Picture slideshows

View a slideshow of your pictures stored in your disc or a USB storage device.

- 1 Select a picture from a disc or USB storage device, and then press ► (Play).
- 2 Press 选项.
- 3 Press **Navigation buttons** and 确认 to select the following settings:
 - **[Slide Animation]**: Select an animation for the slideshow.
 - **[Duration per slide]**: Select a display speed for each picture in a slideshow.
- 4 Press to stop the slideshow.

Musical slideshows

Create a musical slideshow to play music and pictures at the same time.

- 1 Select a music track, and then press 确认.
- 2 Press 返回, and go to the picture folder.
- 3 Select a picture, and then press ► (Play) to start the slideshow.
- 4 Press to stop slideshow.
- 5 Press again to stop music.

Radio

Listen to FM radio on your home theater, and store up to 40 radio stations.

What you need

- FM antenna.

Note

- AM and digital radio are not supported.
- If no stereo signal is detected, you are prompted to install the radio stations again.
- For the best reception, place the antenna away from the TV or other sources of radiation.

Tune stations

- 1 Connect the FM antenna as described in the Quick start guide.
- 2 Press 音源 repeatedly until **RADIO** appears on the display panel.
 - ↳ If you have already installed the radio stations, the last channel that you listened to is played.
 - ↳ If you have not installed any radio stations, the message **AUTO INSTALL... PRESS PLAY** appears on the display panel. Press ► (Play).
- 3 Press the following buttons to listen or to change radio stations:

Button	Action
◀ / ▶	Select a preset radio station.
Navigation buttons (left/right)	Search for a radio station.
Navigation buttons (up/down)	Fine tune a radio frequency.
■	Press to stop the installation of radio stations.
↶ 返回	Press and hold to erase the preset radio station.
☰ 选项	Manual: Press once to access program mode, and press again to store the radio station. Automatic: Press and hold for three seconds to reinstall the radio stations.
字幕	Toggle between the stereo and mono sounds.

Listen to radio

- 1 Press **♪音源** repeatedly until **RADIO** appears on the display panel.
 - To listen to a preset station, press **◀** or **▶**.
 - To search for a radio station, and then listen, press **Navigation buttons** (left/right).
- 2 Press **+/- (Volume)** to change the volume.

Tuning grid

In some countries, you can toggle the FM tuning grid between 50 kHz and 100 kHz. Switching the tuning grid erases all preset radio stations.

- 1 Press **♪音源** repeatedly until **RADIO** appears on the display panel.
- 2 Press and hold **▶ (Play)** to toggle between 50 kHz or 100 kHz.

MP3 player

Connect your MP3 player to play your audio files or music.

What you need

- An MP3 player.
- A 3.5mm stereo audio cable.

Play music

- 1 Connect the MP3 player to the home theater as described in the Quick start guide.
- 2 Press **♪音源** repeatedly until **MUSIC I-LINK** appears on the display panel.
- 3 Press the buttons on the MP3 player to select and play audio files or music.

iPod or iPhone

When you connect a Philips dock for iPod/iPhone, you can use the home theater to play music, movies and photos from your iPod or iPhone.

What you need

- A Philips dock (Model: Philips DCK3060/DCK3061).
- A yellow composite cable.



Note

- Charge your iPod/iPhone on the dock while the home theater is in iPod mode.

Dock your iPod or iPhone

- 1 Move the slide at the bottom of the dock to **STANDARD**, and then connect the dock to the home theater.
- 2 Connect the yellow composite cable to the dock and TV.
- 3 Switch on the iPod or iPhone, and place it on the dock.

Play music

- 1 Dock your iPod or iPhone (see 'Dock your iPod or iPhone' on page 25).
- 2 Press **DOCK for iPod** on the home theater remote control.
- 3 Browse on the iPod or iPhone screen to select music tracks.
 - To view the playlist on your TV and use the home theater remote control to select a track, press **DOCK for iPod** again.

Play video and slideshows

- 1 Dock your iPod or iPhone (see 'Dock your iPod or iPhone' on page 25).
- 2 On the home theater remote control, press **⬆ (Home)**.
- 3 Select [**browse iPod**], and then press **OK**.
- 4 Switch the TV to the **AV/VIDEO** source (corresponding to the yellow composite cable).
 - ↳ The TV screen goes blank.
- 5 Browse on the iPod or iPhone screen to select videos or photos.
- 6 Press **▶ (Play)** to play the videos or photos.

Use smartphone

Turn your iPhone or Android smartphone into a virtual remote control, or use it to browse the contents of a disc or USB storage device on your home theater.

What you need

- An iPhone (iOS 3.1.3 and above) or Android (Android 2.1 and above) smartphone.
- A wired or wireless home network.

Before you start

- Connect your home theater to your home network (see 'Computers and the Internet' on page 16).
- Name your home theater (see 'Name your home theater' on page 18).
- Connect your smartphone to the same home network. For details, see your smartphone user manual.

Download MyRemote application

Download the Philips application, **MyRemote** (MyRemote) to your smartphone. This application is free.



Note

- Philips **MyRemote** is only available for iPhones and Android smartphones.

- 1 Tap the **App Store** (App Store) icon on the iPhone or the **Market** (Market) icon on the Android smartphone.
- 2 Search for 'Philips **MyRemote**' application.
- 3 Follow the instructions on your smartphone to download the application.
 - ↳ The **MyRemote** (MyRemote) icon is added to the home screen of your smartphone.

Access MyRemote application

Access the **MyRemote** application from your smartphone, and then identify your home theater on the home network.

- 1 Tap **MyRemote** (AV Remote) on your iPhone.
 - ↳ Your home theater and the other devices on the network are displayed on your smartphone. A browsing bar with **Devices**, **Remote**, and **Source** tabs is also displayed.
- 2 If your home theater is not found, check the network connection (see 'Computers and the Internet' on page 16).
Then, tap the **Devices** (Devices) tab on your smartphone to search again.
- 3 Tap your home theater icon on the smartphone.
 - ↳ The virtual remote control is displayed on the smartphone.
- 4 To exit the application, press the home button on your smartphone.

Use your smartphone as a remote control

The virtual remote control is displayed in multiple screens on the smartphone. To access the buttons, swipe the smartphone screen to the left or right.

Only the control buttons that are relevant to the play mode are enabled on your smartphone. For example, if you play pictures, only the remote control buttons that are used to control the pictures are enabled. However, if you play a video, additional buttons, such as **SUBTITLE** and **TOP MENU**, are enabled on your smartphone.

- 1 Launch the application on your smartphone (see 'Access MyRemote application' on page 26).
 - ↳ Depending on the play mode, the relevant remote control buttons are enabled.
- 2 If the remote control buttons do not appear, tap the **Remote** (Remote) tab on your smartphone.
- 3 Swipe to the left or right screen to access more buttons.



Note

- Some control functions are not available on smartphones.

Browse a disc or USB storage device

Browse a disc or USB storage device from your smartphone, and play an audio, video, or multimedia file.

- 1 Launch the remote control application on your smartphone (see 'Access MyRemote application' on page 26).
- 2 Load a data disc or connect a USB storage device into your home theater.
- 3 On your smartphone, tap the **Source** (Source) tab, and then select **DISC** (DISC) or **USB** (USB).
 - ↳ The folders in your disc or USB storage device are displayed.
- 4 Select a folder to browse, and then select a file to play.
 - ↳ The relevant remote control buttons are enabled on your smartphone.

- 5 To access the remote control while you browse the contents, tap the **Remote** (Remote) tab on your smartphone.

Karaoke

Available only in Asia Pacific and China

Play a Karaoke disc on your home theater and sing along with the music.

What you need

- A Karaoke microphone.
- Karaoke discs.



Note

- To prevent loud feedback or unexpected noise, turn the microphone volume to the minimum before you connect the microphone to your home theater.

Play karaoke music

- 1 While playing a karaoke disc, press **≡ 选项**.
 - ↳ The options menu is displayed.
- 2 Press the **Navigation buttons** to select **[Karaoke]**, and then press **确认**.
 - ↳ The karaoke setup menu is displayed.
- 3 Press the **Navigation buttons** (up/down) and **确认** to change the following settings:
 - **[Microphone]**: Turn the microphone on or off.
 - **[Microphone volume]**: Change the microphone volume.
 - **[Echo]**: Change the echo level.
 - **[Key]**: Change the pitch to match your voice.
 - **[Vocal support]**: Turn the vocals on or off.

Browse PC through DLNA

When you connect your home theater to your home network, you can enjoy music, photo, and video stored on a computer or other media server on the network.

What you need

- A wired or wireless home network, connected with a Universal Plug and Play (uPnP) router.
- A Philips wireless USB adapter or a LAN cable to connect your home theater to your home network.
- A media server such as:
 - PC running Windows Media Player 11 or higher; or
 - Mac running Twonky Media Server.



Note

- For help to use other media servers, such as TVersion, see the web site of the media server.

Set up media server software

To enable media sharing, set up the media server software.

Before you start

- Connect your home theater to your home network (see 'Computers and the Internet' on page 16).
- Connect your computer to the same home network.
- Make sure that your PC firewall allows you to run Windows Media Player programs.
- Switch on your computer and the router.

Microsoft Windows Media Player 11

- 1 Start Windows Media Player on your PC.
- 2 Click the **Library** tab, and then select **Media Sharing**.
- 3 The first time you select **Media Sharing** on your PC, a pop-up screen appears. Check the **Share my media box** and click **OK**.
↳ The **Media Sharing** screen is displayed.
- 4 In the **Media Sharing** screen, make sure that you see a device marked as **Unknown Device**.
↳ If you don't see an unknown device after a minute or so, check that your PC firewall is not blocking the connection.

- 5 Select the unknown device and click **Allow**.
↳ A green tick appears next to the device.
- 6 By default, Windows Media Player shares from these folders: **My Music**, **My Pictures**, and **My Videos**. If your files are in other folders, select **Library > Add to Library**.
↳ The **Add to Library** screen is displayed.
↳ If necessary, select **Advanced options** to display a list of monitored folders.
- 7 Select **My folders and those of others I can access**, and then click **Add**.
- 8 Follow the onscreen instructions to add the other folders that contain your media files.

Microsoft Windows Media Player 12

- 1 Start Windows Media Player on your PC.
- 2 In Windows Media Player, click the **Stream** tab, and then select **Turn on media streaming**.
↳ The **Media streaming options** screen is displayed.
- 3 Click **Turn on media streaming**.
↳ You return to Windows Media Player screen.
- 4 Click the **Stream** tab and select **More streaming options**.
↳ The **Media streaming options** screen is displayed.
- 5 Make sure that you see a media program in the **Local network** screen.
↳ If you don't see a media program, check that your PC firewall is not blocking the connection.
- 6 Select the media program and click **Allowed**.
↳ A green arrow appears next to the media program.
- 7 By default, Windows Media Player shares from these folders: **My Music**, **My Pictures**, and **My Videos**. If your files are in other folders, click the **Organize** tab and select **Manage libraries > Music**.
↳ The **Music Library Locations** screen is displayed.
- 8 Follow the onscreen instructions to add the other folders that contain your media files.

Macintosh OS X Twonky Media (v4.4.2)

- 1 Visit www.twonkymedia.com to purchase the software, or download a free 30-day trial to your Macintosh.
- 2 Start Twonky Media on the Macintosh.
- 3 In the Twonky Media Server screen, select **Basic Setup** and **First Steps**.
↳ The First steps screen is displayed.
- 4 Type a name for your media server, and then click Save changes.
- 5 Back in the Twonky Media screen, select **Basic Setup** and **Sharing**.
↳ The **Sharing** screen is displayed.
- 6 Browse and select folders to share, and then select **Save Changes**.
↳ Your Macintosh rescans the folders automatically so that they are ready to share.

Play files from your PC



Note

- Before you play multimedia content from the computer, make sure that the home theater is connected to the home network, and the media server software is properly set up.

- 1 Switch your TV to the correct HDMI source for your home theater.
- 2 Press **⬆ (Home)**.
↳ The home menu is displayed.
- 3 Select **[browse PC]**, and then press **确认**.
↳ A content browser is displayed.
- 4 Select a file, and then press **确认**.
- 5 Press the playback buttons to control play.

EasyLink

The home theater supports Philips EasyLink, which uses the HDMI-CEC (Consumer Electronics Control) protocol. EasyLink-compliant devices that are connected through HDMI can be controlled by a single remote control.

Philips does not guarantee 100% interoperability with all HDMI-CEC devices.

What you need

- HDMI-CEC compliant devices.
- An HDMI connection between the connected devices.

Switch on

- 1 Switch on the HDMI-CEC operations on the TV and other connected devices. For information, refer to the manual of the TV or other devices.
- 2 Press **⬆ (Home)**.
- 3 Select **[Setup]**, and then press **确认**.
- 4 Select **[EasyLink] > [EasyLink]**, and then press **确认**.
- 5 Select **[On]**, and then press **确认**.

Control devices

Control the home theater and the other connected HDMI-CEC compliant devices with a single remote control.

One-touch play

If you enable One-touch play, the TV automatically switches to the correct channel when you play a disc in your home theater.

One-touch standby

When you press and hold **⏻ (Standby)** on the remote control, the home theater and all the connected HDMI-CEC devices (that support one-touch standby) switch to the standby mode.

If one-touch standby is enabled on your home theater, you can switch to standby with the remote control of the TV or other HDMI-CEC devices.

System Audio Control

When you play a device that has its audio output routed to the home theater, the home theater switches to the corresponding audio source automatically.

To use one-touch audio, turn on System Audio Control and follow the instructions on the TV to map connected devices to the audio input connectors of the home theater.

Audio Input Mapping

When you connect a new device to your home theater, map the device to the audio input connector (see 'Play audio from home theater' on page 30).

Play audio from home theater

Play the audio from a connected device through your home theater.

- 1 Press **⬆️** (Home).
- 2 Select **[Setup]**, and then press **确认**.
- 3 Select **[EasyLink]** > **[System Audio Control]** > **[On]**, and then press **确认**.
 - To play the audio from the TV speakers, select **[Off]**, and skip the following steps.
- 4 Select **[EasyLink]** > **[Audio Input Mapping]**, and then press **确认**.
- 5 Follow the instructions on the TV to map the audio of the connected device to the audio inputs on your home theater.

Note

- If you connect your home theater to the TV through an HDMI ARC connection, make sure that the TV audio is mapped to the ARC input on your home theater.

8 Change settings

This section helps you to change the settings of your home theater.

Caution

- Most of the settings are already configured with the best value for your home theater. Unless you have a reason to change a setting, it is best to leave it at the default value.

Note

- You cannot change a setting that is grayed out.
- To return to the previous menu, press **⬅️** 返回. To exit the menu, press **⬆️** (Home).

Picture

Change the picture settings to suit your preferences.

Note

- The best setting is automatically selected for the TV. If you change the setting, make sure that the TV supports the new settings.

Picture settings and format

- 1 Press **⬆️** (Home).
- 2 Select **[Setup]**, and then press **确认**.
- 3 Select **[Video]**, and then press **确认**.
- 4 Change the following settings, and then press **确认**:
 - **[TV Display]**: Picture format.
 - **[Picture Settings]**: Predefined color settings.

Picture color

Deep Color recreates the natural world on your TV screen and displays vivid images in over a billion of colors.

If your TV supports Deep Color and is connected to your home theater through an HDMI cable, you can change the Deep Color.

- 1 Press **⬆** (Home).
- 2 Select **[Setup]**, and then press **确认**.
- 3 Select **[Video] > [HDMI Deep Color]**, and then press **确认**.
- 4 Select the following options, and then press **确认** :
 - **[Auto]**: Automatically select HDMI Deep Color.
 - **[On]**: View vivid images.
 - **[Off]**: Display standard 24-bit color.

Picture resolution

For HDMI video settings, connect your home theater to the TV through an HDMI cable.

- 1 Press **⬆** (Home).
- 2 Select **[Setup]**, and then press **确认**.
- 3 Select **[Video] > [HDMI Video]**, and then press **确认**.
- 4 Change the HDMI resolution setting, and then press **确认**.

Blu-ray 3D video

To play 3D video, connect your home theater to a 3D TV through an HDMI cable.

- 1 Press **⬆** (Home).
- 2 Select **[Setup]**, and then press **确认**.
- 3 Select **[Video] > [Watch 3D video] > [Auto]**, and then press **确认**.

Subtitle position

Automatically change the position of the subtitles to fit your TV screen.

- 1 Press **⬆** (Home).
- 2 Select **[Setup]**, and then press **确认**.
- 3 Select **[Preference] > [Auto Subtitle Shift] > [On]**, and then press **确认**.

Sound

Change the sound settings to suit your preference.

HDMI audio

To enjoy HDMI audio output from your TV, connect your home theater to the TV through an HDMI cable.

- 1 Press **⬆** (Home).
- 2 Select **[Setup]**, and then press **确认**.
- 3 Select **[Audio] > [HDMI Audio]**, and then press **确认**.
- 4 Select the following options, and then press **确认** :
 - **[Bitstream]**: Enable bitstream output over HDMI.
 - **[Auto]**: Automatically select the best supported audio format.
 - **[Off]**: Disable audio from the TV.

Audio post processing

To select a predefined sound mode, enable audio post processing at the speaker (see 'Sound mode' on page 19).

- 1 Press **⬆** (Home).
- 2 Select **[Setup]**, and then press **确认**.
- 3 Select **[Advanced] > [Enhanced Audio] > [On]**, and then press **确认**.

Note

- To play the original audio of the disc, select **[Off]**.

Night mode

For quiet listening, decrease the volume of loud sounds when you play discs. Night mode is only available for Dolby-encoded DVD and Blu-ray discs.

- 1 Press **⬆** (Home).
- 2 Select **[Setup]**, and then press **确认**.
- 3 Select **[Audio] > [Night Mode] > [On]**, and then press **确认**.

Restore sound mode settings

Restore the equalizer settings of all the sound modes to the default values.

- 1 Press **⬆** (Home).
- 2 Select **[Setup]**, and then press **确认**.
- 3 Select **[Audio]** > **[Default sound settings]**, and then press **OK**.

Language

Select a language for the home menu, audio, and subtitles.

Home menu

- 1 Press **⬆** (Home).
- 2 Select **[Setup]**, and then press **确认**.
- 3 Select **[Preference]** > **[Menu language]**, and then press **确认**.
- 4 Select a menu language, and then press **确认**.

Disc audio

- 1 Press **⬆** (Home).
- 2 Select **[Setup]**, and then press **确认**.
- 3 Select **[Preference]** > **[Audio]**, and then press **确认**.
- 4 Select an audio language for discs, and then press **确认**.

Note

- If your preferred disc language is not available, select **[Others]** from the list, and enter the 4-digit language code found at the end of this user manual (see 'Language code' on page 41).
- If you select a language that is not available on a disc, the home theater uses the default language of the disc.

Disc subtitle

- 1 Press **⬆** (Home).
- 2 Select **[Setup]**, and then press **确认**.
- 3 Select **[Preference]** > **[Subtitle]**, and then press **确认**.
- 4 Select a subtitle language for discs, and then press **确认**.

Disc menu

- 1 Press **⬆** (Home).
- 2 Select **[Setup]**, and then press **确认**.
- 3 Select **[Preference]** > **[Disc Menu]**, and then press **确认**.
- 4 Select a menu language for discs, and then press **确认**.

Note

- If your preferred disc language is not available, select **[Others]** from the list, and enter the 4-digit language code found at the end of this user manual (see 'Language code' on page 41).
- If you select a language that is not available on a disc, the home theater uses the default language of the disc.

Parental control

Restrict access to discs that are recorded with ratings.

Password

You can set or change your password to play a restricted disc.

- 1 Press **⬆** (Home).
- 2 Select **[Setup]**, and then press **确认**.
- 3 Select **[Preference]** > **[Change Password]**, and then press **确认**.
→ A change password menu is displayed.
- 4 Follow the instructions on the TV to set or change password.
 - If you do not have a password or you have forgotten, enter **'0000'**.
- 5 Press **确认**.

Ratings

Some discs are recorded with ratings according to age. You can set up your home theater to play only discs with an age rating lower than your child's age.

- 1 Press **⬆** (Home).
- 2 Select **[Setup]**, and then press **确认**.

- 3 Select **[Preference]** > **[Parental Control]**, and then press 确认.
 - ↳ A message prompts you to enter the password.
- 4 Enter the password with the **Numeric buttons**.
- 5 Select an age rating, and then press 确认.
 - To play all discs irrespective of the rating, select level **8** or **[Off]**.

Energy saving

Save energy by changing the following settings.

Auto standby

When playing a disc or a USB storage device, automatically switch your home theater to standby if:

- it is in pause or stop mode, and
 - no button is pressed for 30 minutes.
- 1 Press **⬆ (Home)**.
 - 2 Select **[Setup]**, and then press 确认.
 - 3 Select **[Preference]** > **[Auto Standby]** > **[On]**, and then press 确认.

Sleep timer

Set timers to switch the home theater to standby after a specified time.

- 1 Press **⬆ (Home)**.
- 2 Select **[Setup]**, and then press 确认.
- 3 Select **[Preference]** > **[Sleep Timer]**, and then press 确认.
- 4 Select the duration of the sleep timer:
 - ↳ The sleep timer can be set up to 60 minutes. If the sleep timer is set to **[Off]**, it switches off.
- 5 Press 确认 to activate.
 - ↳ The home theater switches to standby after the specified time.

Screen saver

Automatically switch your home theater to screen saver mode if:

- it is in pause or stop mode, and
 - no button is pressed for 10 minutes.
- 1 Press **⬆ (Home)**.
 - 2 Select **[Setup]**, and then press 确认.
 - 3 Select **[Preference]** > **[Screen Saver]** > **[On]**, and then press 确认.

Display panel

Change the brightness of the home theater display panel.

- 1 Press **⬆ (Home)**.
- 2 Select **[Setup]**, and then press 确认.
- 3 Select **[Preference]** > **[Display Panel]**, and then press 确认.
- 4 Select the brightness, and then press 确认.

Apply factory settings

Reset your home theater to the default settings. You cannot reset the parental control settings.

- 1 Press **⬆ (Home)**.
- 2 Select **[Setup]**, and then press 确认.
- 3 Select **[Advanced]** > **[Restore default settings]**, and then press 确认.
- 4 Select **[OK]**, and then press 确认.

9 Update software

To continue to get the best features and support for your home theater, update the software regularly. Compare the version of your current software with the latest version on www.philips.com/support.

Check software version

- 1 Press **⬆** (Home).
- 2 Select **[Setup]**, and then press **确认**.
- 3 Select **[Advanced]** > **[Version Info.]**, and then press **确认**.
↳ The software version is displayed.

Update software through the Internet

- 1 Connect your home theater to the network. Use a
 - wired network connection (see 'Set up the wired network' on page 17), or
 - wireless network connection (see 'Set up the wireless network' on page 17).
- 2 Press **⬆** (Home).
- 3 Select **[Setup]**, and then press **确认**.
- 4 Select **[Advanced]** > **[Software Update]** > **[Network]**.
↳ If an upgrade media is detected, you are prompted to start or cancel the update.
- 5 Follow the instruction on the TV to confirm the update.
↳ When the software update is complete, the home theater automatically switches off and restarts. If it does not, disconnect the power cord for a few seconds and then reconnect it.

Note

- If the home theater cannot connect to the Philips server, press **⬆** (Home), and then select **[Setup]** > **[Network]** > **[Network Installation]** to set up the network.

Update software through USB

What you need

- A USB flash drive, with at least 75MB of memory. The USB flash drive must be FAT or NTFS formatted. Do not use a USB hard drive.
- A computer with Internet access.
- An archive utility that supports the ZIP file format (for example, WinZip® for Microsoft® Windows® or StuffIt® for Macintosh®).

Step 1: Download the latest software

- 1 Connect a USB flash drive to your computer.
- 2 In your web browser, go to www.philips.com/support.
- 3 At the Philips Support website, find your product and locate the **Software and drivers**.
↳ The software update is available as a zip file.
- 4 Save the zip file in the root directory of your USB flash drive.
- 5 Use the archive utility to extract the software update file in the root directory of the USB flash drive.
↳ The files are extracted under the **UPG_ALL** folder of your USB flash drive.
- 6 Disconnect the USB flash drive from your computer.

Step 2: Update the software

! Caution

- Before you connect the USB flash drive to your home theater, make sure that there is no disc in the disc compartment, and the disc compartment is closed.

- 1 Connect the USB flash drive to your home theater.
- 2 Switch your TV to the correct source for your home theater.
- 3 Press **▲** (Home), and then select **[Setup]**.
- 4 Select **[Advanced]** > **[Software Update]** > **[USB]**.
- 5 Follow the instructions on the TV to confirm the update.
 - ➔ When the software update is complete, the home theater automatically switches off and restarts. If it does not, disconnect the power cord for a few seconds, and then reconnect it.

≡ Note

- When the software update is in progress, do not turn off the power or remove the USB flash drive.

10 Product specifications

≡ Note

- Specifications and design are subject to change without notice.

Region codes

The type plate on the back or bottom of the home theater shows which regions it supports.

Country	DVD	BD
Europe, United Kingdom		
Asia Pacific, Taiwan, Korea		
Latin America		
Australia, New Zealand		
Russia, India		
China		

Media formats

- AVCHD, BD, BD-R/ BD-RE, BD-Video, DVD-Video, DVD+R/+RW, DVD-R/-RW, DVD+R/-R DL, CD-R/CD-RW, Audio CD, Video CD/SVCD, Picture files, MP3 media, WMA media, DivX Plus HD media, USB storage device

File formats

- Audio: .aac, .mka, .mp3, .wma, .wav, .mp4, .m4a
- Video:
 - .avi, .divx, .mp4, .mkv, .asf, .wmv, .mpg, .mpeg,
 - .rmvb, .rm (Available only in Asia Pacific and China)
- Picture: .jpg, .jpeg, .gif, .png

Audio formats

Your home theater supports the following audio files.

Extension	Container	Audio codec	Bit rate
.mp3	MP3	MP3	32 kbps ~ 320 kbps
.wma	ASF	WMA	64 kbps ~ 160 kbps
.aac	AAC	AAC, HE-AAC	192 kbps
.wav	WAV	PCM	1.4 Mbps
.m4a	MKV	AAC	192 kbps
.mka	MKA	PCM	27.648 Mbps
.mka	MKA	Dolby Digital	640 kbps
.mka	MKA	DTS core	1.54 Mbps
.mka	MKA	MPEG	912 kbps
.mka	MKA	MP3	32 kbps ~ 320 kbps
.mka	MKA	WMA	64 kbps ~ 160 kbps
.mka	MKA	AAC, HE-AAC	192 kbps

Video formats

If you have a high definition TV, your home theater allows you to play your video files with:

- Resolution: 1920 × 1080 pixels at
- Frame rate: 6 ~ 30 frames per second.

.avi files in AVI container

Audio codec	Video codec	Bit rate
PCM, Dolby Digital, DTS core, MP3, WMA	DivX 3.11, DivX 4.x, DivX 5.x, DivX 6.x	10 Mbps max
	MPEG 1, MPEG 2	20 Mbps (peak 40 Mbps)
	MPEG 4 ASP	10 Mbps max
	H.264/AVC HP@4.1/4.0; MP@3.2/3.1/3.0	20 Mbps (peak 40 Mbps)
	WMV9	20 Mbps

.divx files in AVI container

Audio codec	Video codec	Bit rate
PCM, Dolby Digital, MP3, WMA	DivX 3.11, DivX 4.x, DivX 5.x, DivX 6.x	10 Mbps max
	MPEG 1, MPEG 2	20 Mbps (peak 40 Mbps)
	MPEG 4 ASP	10 Mbps max

.mp4 or .m4v files in MP4 container

Audio codec	Video codec	Bit rate
Dolby Digital, MPEG, MP3, AAC, HE-AAC	MPEG 1, MPEG 2	20 Mbps (peak 40 Mbps)
	MPEG 4 ASP	10 Mbps max
	H.264/AVC HP@4.1/4.0; MP@3.2/3.1/3.0	20 Mbps (peak 40 Mbps)

.mkv files in MKV container

Audio codec	Video codec	Bit rate
PCM, Dolby Digital, DTS core, MPEG, MP3, WMA, AAC, HE-AAC	MPEG 1, MPEG 2	20 Mbps (peak 40 Mbps)
	MPEG 4 ASP	10 Mbps max
	H.264/AVC HP@4.1/4.0; MP@3.2/3.1/3.0	20 Mbps (peak 40 Mbps)
	WMV9	20 Mbps

.asf and .wmv files in ASF container

Audio codec	Video codec	Bit rate
PCM, Dolby Digital, MP3, WMA	MPEG 4 ASP	10 Mbps max
	H.264/AVC HP@4.1/4.0; MP@3.2/3.1/3.0	20 Mbps (peak 40 Mbps)
	WMV9	20 Mbps

.mpg and .mpeg files in PS container

Audio codec	Video codec	Bit rate
PCM, DTS core, MPEG, MP3	MPEG 1, MPEG 2	20 Mbps (peak 40 Mbps)
	MPEG 1, MPEG 2	20 Mbps (peak 40 Mbps)

.rm and .rmvb files in RM container (Available only in Asia Pacific and China)

Audio codec	Video codec	Bit rate
AAC, COOK	RV30, RV40	20 Mbps (peak 40 Mbps)

Amplifier

- Total output power:
 - Europe and Asia: 1000W RMS (30% THD)
 - Latin America: 800W RMS (+/- 0.5 dB, 10% THD)
- Frequency response: 20 Hz-20 kHz / ± 3 dB
- Signal-to-noise ratio: > 65 dB (CCIR) / (A-weighted)
- Input sensitivity:
 - AUX1, AUX2: 1000 mV
 - Music iLink: 500 mV

Video

- Signal system: PAL / NTSC
- HDMI output: 480i/576i, 480p/576p, 720p, 1080i, 1080p, 1080p24

Audio

- S/PDIF Digital audio input:
 - Coaxial: IEC 60958-3
 - Optical: TOSLINK
- Sampling frequency:
 - MP3: 32 kHz, 44.1 kHz, 48 kHz
 - WMA: 44.1 kHz, 48 kHz
- Constant bit rate:
 - MP3: 32 kbps - 320 kbps
 - WMA: 48 kbps - 192 kbps

Radio

- Tuning range:
 - Europe/China: FM 87.5-108 MHz (50 kHz)
 - Asia Pacific/Russia/Latin America: FM 87.5-108 MHz (50/100 kHz)
- Signal-to-noise ratio: FM 50 dB
- Frequency response: FM 180 Hz-12.5 kHz / ± 3 dB

USB

- Compatibility: Hi-Speed USB (2.0)
- Class support: USB Mass Storage Class (MSC)
- File system: FAT16, FAT32, NTFS
- Maximum memory support: < 160 GB

Main unit

- Power supply:
 - Europe/China: 220-240 V~, 50 Hz
 - Latin America/Asia Pacific: 110-127 V/220-240 V~, 50-60 Hz
 - Russia/India: 220-240 V~, 50 Hz
 - Power consumption: 105 W
 - Standby power consumption: ≤ 0.5 W
 - Dimensions (WxHxD): 435 x 57 x 356.5 mm
 - Weight: 3.69 kg
-

Subwoofer

- Output power:
 - Europe and Asia: 230W RMS (30% THD)
 - Latin America: 184W RMS (+/- 0.5 dB, 10% THD)
 - Impedance: 3 ohm
 - Speaker drivers:
 - Europe and Asia: 165 mm (6.5") woofer
 - India and Latin America: 203 mm (8") woofer
 - Dimensions (WxHxD):
 - HTS4561/HTS4562: 123x 309 x 369 mm
 - HTS5561/HTS5562/HTS5581/HTS5582/HTS5591/HTS5592: 196 x 395 x 342 mm
 - Weight:
 - HTS4561/HTS4562: 3.6 kg
 - HTS5561/HTS5562/HTS5581/HTS5582/HTS5591/HTS5592: 4.8 kg
 - Cable length: 3 m
-

Speakers

Center speaker:

- Output power:
 - Europe and Asia: 230W RMS (30% THD)
 - Latin America: 184W RMS (+/- 0.5 dB, 10% THD)
- System: full range satellite
- Speaker impedance: 3 ohm
- Speaker drivers:
 - HTS4561/HTS4562: 1 x 76.2 mm (3") full range
 - HTS5561/HTS5562/HTS5581/HTS5582/HTS5591/HTS5592: 2 x 76.2 mm (3") full range

- Dimensions (WxHxD):
 - HTS4561/HTS4562 : 161 x 95 x 92 mm
 - HTS5561/HTS5562/HTS5581/HTS5582/HTS5591/HTS5592: 280 x 95 x 92 mm
 - Weight:
 - HTS4561/HTS4562: 0.8kg
 - HTS5561/HTS5562/HTS5581/HTS5582/HTS5591/HTS5592: 1.40 kg
 - Cable length: 2 m
- Front / rear speakers:
- Output power:
 - Europe and Asia: 4 x 135W RMS (30% THD)
 - Latin America: 4 x 108W RMS (+/- 0.5 dB, 10% THD)
 - Speaker impedance: 5 ohm
 - Speaker drivers:
 - HTS4561/HTS4562: 2 x 76.2 mm (3") full range
 - HTS5561/HTS5562/HTS5581/HTS5582/HTS5591/HTS5592: 2 x 76.2 mm (3") full range
 - Dimensions (WxHxD):
 - HTS4561/HTS4562: 95 x 161 x 87 mm
 - HTS5561/HTS5562/HTS5581/HTS5582/HTS5591/HTS5592 small speakers: 100 x 280 x 104 mm
 - HTS5561/HTS5562/HTS5581/HTS5582/HTS5591/HTS5592 tall speakers: 260 x 1101 x 260 mm
 - Weight:
 - HTS4561/HTS4562: 0.6 kg each
 - HTS5561/HTS5562/HTS5581/HTS5582/HTS5591/HTS5592 small speakers: 0.98-1.07 kg each
 - HTS5561/HTS5562/HTS5581/HTS5582/HTS5591/HTS5592 tall speakers: 3.81-3.89 kg each
 - Cable length (front speakers): 4 m
 - Cable length (rear speakers): 10 m
-

Remote control batteries

- 2 x AAA-R03-1.5 V
-

Laser

- Laser Type (Diode): InGaN/AlGaIn (BD), AlGaInP (DVD/CD)
- Wave length: 405 +7 nm/-7 nm (BD), 655 +10 nm/-10 nm (DVD), 790 +10 nm/-20 nm (CD)
- Output power (Max. ratings): 20 mW (BD), 6 mW (DVD), 7 mW (CD)

11 Troubleshooting



Warning

- Risk of electric shock. Never remove the casing of the product.

To keep the warranty valid, never try to repair the product yourself.

If you have problems using this product, check the following points before you request service. If you still have a problem, register your product and get support at www.philips.com/welcome.

Main unit

The buttons on the home theater do not work.

- Disconnect the home theater from the power supply for a few minutes, then reconnect.

Picture

No picture.

- Make sure that the TV is switched to the correct source for the home theater.

No picture on a TV connected through HDMI.

- Make sure that you use a High Speed HDMI cable to connect the home theater and TV. Some Standard HDMI cables do not display properly for some images, 3D video, or Deep Color.
- Make sure that the HDMI cable is not faulty. If it is faulty, replace it with a new cable.
- Press **Home** and then **731** on the remote control to restore the default picture resolution.
- Change the HDMI video setting, or wait for 10 seconds for auto recovery (see 'Picture resolution' on page 31).

Disc does not play high-definition video.

- Make sure that the disc contains high-definition video.
- Make sure that the TV supports high-definition video.
- Use an HDMI cable to connect to the TV.

Sound

No sound from home theater speakers.

- Connect the audio cable from your home theater to your TV or other devices. You do not need a separate audio connection when:
 - the home theater and TV are connected through an **HDMI ARC** connection, or
 - a device is connected to the **HDMI IN** connector on your home theater.
- Set up the audio for the connected device (see 'Set up audio for connected devices' on page 16).
- Reset your home theater to its factory settings (see 'Apply factory settings' on page 33), and then switch it off and switch on again.
- On your home theater, press **SOURCE** repeatedly to select the correct audio input.

Distorted sound or echo.

- If you play audio from the TV through the home theater, make sure that the TV is muted.

Audio and video are not synchronized.

- 1) Press **III 声音设置**. 2) Press the **◀ / ▶** (**Previous/Next**) to select **AUD SYNC**, and then press **确认**. 3) Press the **Navigation buttons** (up/down) to synchronize the audio with the video.

Play

Cannot play a disc.

- Clean the disc.
- Make sure that the home theater supports the type of disc (see 'Media formats' on page 35).
- Make sure that the home theater supports the region code of the disc (see 'Region codes' on page 35).
- If the disc is a DVD±RW or DVD±R disc, make sure that it is finalized.

Cannot play a DivX file.

- Make sure that the DivX file is encoded according to the 'Home Theater Profile' with the DivX encoder.
- Make sure that the DivX file is complete.

DivX or RMVB/RM subtitles do not display correctly.

- Make sure that the subtitle file name is the same as the movie file name (see 'Subtitles' on page 19).

- Select the correct character set: 1) Press **⋮** 选项. 2) Select **[Character Set]**. 3) Select the supported character set. 4) Press **确认**.

Cannot read the contents of a USB storage device.

- Make sure that the format of the USB storage device is compatible with the home theater.
- Make sure that the file system on the USB storage device is supported by the home theater.

'No entry' or 'x' sign appears on the TV.

- The operation is not possible.

EasyLink does not work.

- Make sure that the home theater is connected to a Philips brand EasyLink TV, and the EasyLink option is on (see 'EasyLink' on page 29).

When you switch on the TV, the home theater automatically switches on.

- This behavior is normal when you are using Philips EasyLink (HDMI-CEC). To make the home theater work independently, switch off EasyLink.

Cannot access BD-Live features.

- Make sure that the home theater is connected to the network. Use a wired network connection (see 'Wired connection' on page 17) or wireless network connection (see 'Wireless connection' on page 17).
- Make sure that the network is set up. Use a wired network installation (see 'Set up the wired network' on page 17) or wireless network installation (see 'Set up the wireless network' on page 17).
- Make sure that the Blu-ray disc supports BD-Live features.
- Clear memory storage (see 'Clear memory' on page 22).

Cannot play video or photos from an iPod or iPhone on the TV.

- Browse and select videos and photos from the iPod or iPhone screen, and play them on your TV.
- Make sure that the iPod or iPhone software has not been tampered with or illegally modified.

Cannot view pictures from an iPod or iPhone on the TV.

- Connect a yellow composite cable to the iPod dock and the TV.
- Switch the TV to the **AV/VIDEO** source (corresponding to the yellow composite cable).
- Press the play button on the iPod or iPhone to start a slideshow.
- Make sure that the iPod or iPhone software has not been tampered with or illegally modified.

Play 3D video in 2D mode.

- Make sure that your home theater is connected to a 3D TV through an HDMI cable.
- Make sure that the disc is a Blu-ray 3D disc, and the Blu-ray 3D video option is on (see 'Blu-ray 3D video' on page 31).

TV screen is black when you play a Blu-ray 3D video or a DivX copy protected video.

- Make sure that the home theater is connected to the TV through an HDMI cable.
- Switch to the correct HDMI source on the TV.

Network

Wireless network distorted or not found.

- Make sure that the wireless network is not disturbed by microwave ovens, DECT phones, or other neighboring Wi-Fi devices.
- If the wireless network does not work properly, try a wired network installation (see 'Set up the wired network' on page 17).

12 Language code

Abkhazian	6566	Inupiaq	7375	Pushto	8083
Afar	6565	Irish	7165	Russian	8285
Afrikaans	6570	Íslenska	7383	Quechua	8185
Amharic	6577	Italiano	7384	Raeto-Romance	8277
Arabic	6582	Ivrit	7269	Romanian	8279
Armenian	7289	Japanese	7465	Rundi	8278
Assamese	6583	Javanese	7486	Samoan	8377
Avestan	6569	Kalaallisut	7576	Sango	8371
Aymara	6589	Kannada	7578	Sanskrit	8365
Azerbaijani	6590	Kashmiri	7583	Sardinian	8367
Bahasa Melayu	7783	Kazakh	7575	Serbian	8382
Bashkir	6665	Kernewek	7587	Shona	8378
Belarusian	6669	Khmer	7577	Shqip	8381
Bengali	6678	Kinyarwanda	8287	Sindhi	8368
Bihari	6672	Kirghiz	7589	Sinhalese	8373
Bislama	6673	Komi	7586	Slovensky	8373
Bokmål, Norwegian	7866	Korean	7579	Slovenian	8376
Bosanski	6683	Kuanyama; Kwanyama	7574	Somali	8379
Brezhoneg	6682	Kurdish	7585	Sotho; Southern	8384
Bulgarian	6671	Lao	7679	South Ndebele	7882
Burmese	7789	Latina	7665	Sundanese	8385
Castellano, Español	6983	Latvian	7686	Suomi	7073
Catalán	6765	Letzeburgesch;	7666	Swahili	8387
Chamorro	6772	Limbungan; Limburger	7673	Swati	8383
Chechen	6769	Lingala	7678	Svenska	8386
Chewa; Chichewa; Nyanja	7889	Lithuanian	7684	Tagalog	8476
中文	9072	Luxembourgish;	7666	Tahitian	8489
Chuang; Zhuang	9065	Macedonian	7775	Tajik	8471
Church Slavic; Slavonic	6785	Malagasy	7771	Tamil	8465
Chuvash	6786	Magyar	7285	Tatar	8484
Corsican	6779	Malayalam	7776	Telugu	8469
Česky	6783	Maltese	7784	Thai	8472
Dansk	6865	Manx	7186	Tibetan	6679
Deutsch	6869	Maori	7773	Tigrinya	8473
Dzongkha	6890	Marathi	7782	Tonga (Tonga Islands)	8479
English	6978	Marshallese	7772	Tsonga	8483
Esperanto	6979	Moldavian	7779	Tswana	8478
Estonian	6984	Mongolian	7778	Türkçe	8482
Euskara	6985	Nauru	7865	Türkmen	8475
Ελληνικά	6976	Navaho; Navajo	7886	Twí	8487
Faroese	7079	Ndebele, North	7868	Uighur	8571
Français	7082	Ndebele, South	7882	Ukrainian	8575
Frysk	7089	Ndonga	7871	Urdu	8582
Fijian	7074	Nederlands	7876	Uzbek	8590
Gaelic; Scottish Gaelic	7168	Nepali	7869	Vietnamese	8673
Gallegan	7176	Norsk	7879	Volapuk	8679
Georgian	7565	Northern Sami	8369	Walloon	8765
Gikuyu; Kikuyu	7573	North Ndebele	7868	Welsh	6789
Guarani	7178	Norwegian Nynorsk;	7878	Wolof	8779
Gujarati	7185	Occitan; Provençal	7967	Xhosa	8872
Hausa	7265	Old Bulgarian; Old Slavonic	6785	Yiddish	8973
Herero	7290	Oriya	7982	Yoruba	8979
Hindi	7273	Oromo	7977	Zulu	9085
Hiri Motu	7279	Ossetian; Ossetic	7983		
Hrwatski	6779	Pali	8073		
Ido	7379	Panjabi	8065		
Interlingua (International)	7365	Persian	7065		
Interlingue	7365	Polski	8076		
Inuktitut	7385	Português	8084		

13 Index

2

2D video 21

3

3D
 3D disc in 2D mode 21
 3D safety 9
 3D video 20

A

advanced
 BD-Live security 22
 enhanced audio 31
 restore default settings 33
 software update 34
 software version 34
amplifier 37
audio
 formats 36
 HDMI audio 31
 input mapping 29
 language 32
 night mode 31
 options 23
 post processing 31
 predefined modes 19
 quality 15
 settings 31
 source 16
 speaker setup 13
 specifications 37
audio formats 36
audio input mapping 30
audio language 32
audio options 23
auto standby 33

B

bass 20
BD-Live
 BD-Live 22
 clear memory 22
 disable 22
 troubleshooting 39
Blu-ray 20
Bonus View 21
brightness 33
browse

disc 21
 from iPhone 27
 from iPod 26
 USB storage device 22

C

care
 environment 9
 health 9
 product 9
close disc compartment 10
computer
 connect to 16
 DLNA 28
connect
 audio (analog cable) 16
 audio (coaxial cable - digital) 16
 audio (optical cable - digital) 16
 audio from TV and other devices 15
 computer 28
 home network 16
 speakers 12
 TV (Composite) 15
 TV (HDMI ARC) 14
 TV (HDMI) 15
 wireless speakers 13
connectors
 back connectors - center 14
 back connectors - left 13
 back connectors - right 14
 front connectors 13
control
 disc play 21
 Easylink (HDMI-CEC) 11
 main unit 10
 parental control 32
 radio 24
 USB storage device 23

D

disable
 audio post processing 31
 BD-Live 22
 HDMI-CEC 29
discs
 2D video 21
 3D disc in 2D mode 21
 3D video 20
 audio 23
 audio language 32
 BD-Live 22
 Bonus View 21

control buttons	21
DivX	19
eject disc	10
menu language	32
options	23
picture	24
picture-in-picture	21
play	20
subtitle	32
synchronize picture and sound	21
time search	23
titles	23
display panel	10
DivX	
subtitles	19
VOD code	19
DLNA	28
dock your iPod or iPhone	25

E

EasyLink (HDMI-CEC)	
audio input mapping	30
control buttons	11
one-touch play	29
one-touch standby	29
system audio control	29
eject disc	10
enable	
auto standby	33
auto subtitle shift	31
BD-Live	22
HDMI-CEC	29
predefined sound mode	31
screen saver	33
energy	
auto standby	33
brightness	33
screen saver	33
sleep timer	33

F

factory settings	33
FAQs	6
FM antenna	14
format	37
front connectors	13

H

HDMI	
audio	31
Deep color	31

TV (HDMI ARC)	14
TV (HDMI)	15
video	31
HDMI-CEC	29
help	
navigate	4
read	4
update	5

I

Internet	
BD-Live	22
connect to	16
update home theater software	34
iPod and iPhone	
dock your iPod or iPhone	25
music	26
Philips dock	14
video and slideshow	26

L

language	
2nd audio language	21
2nd subtitle language	21
audio	32
disc menu	32
language code	41
onscreen menu	32
subtitle	32
legal notices	6

M

main unit	
overview	10
specifications	38
troubleshooting	39
manually setup speakers	13
media formats	35
microphone	13
Microsoft Windows Media Player 11	28
Microsoft Windows Media Player 12	28
MP3	
connector	13
play	25
multimedia content	
from disc	20
from PC	28
from USB storage device	22

S		
safety		
disposal	9	
use of the product	8	
watching 3D	9	
screen saver	33	
settings		
3D video	31	
audio	31	
auto subtitle shift	31	
default	33	
disc language	32	
HDMI audio	31	
HDMI video	31	
HDMI-CEC	29	
menu language	32	
parental rating	32	
password	32	
picture	30	
power	33	
ratings	32	
resolution	31	
restore	33	
screen saver	33	
sleep timer	33	
subtitle language	32	
video	30	
setup speakers		
manually	13	
sleep timer	33	
slideshows		
animation	24	
duration	24	
musical	24	
picture	24	
smartphone		
browse disc or USB from smartphone	27	
smartphone as remote control	27	
software		
check current version	34	
electronic user manual	5	
update	34	
sound		
bass	20	
equalizer	20	
predefined sound mode	19	
surround sound	20	
synchronize picture and sound	21	
treble	20	
troubleshooting	39	
speaker setup		
predefined modes	19	
settings	31	
speakers		
5.1 speakers	12	
connect	12	
manual setup	13	
position	12	
setup	13	
specifications	38	
surround sound	20	
wireless	13	
specifications	35	
standby	33	
subtitle		
language	32	
position	31	
subwoofer		
specifications	38	
synchronize picture and sound	21	
system audio control	29	
T		
time search	23	
titles	23	
trademarks	7	
treble	20	
troubleshooting		
connection	39	
main unit	39	
network	40	
picture	39	
play	39	
serial number	6	
sound	39	
tuning grid	25	
tutorials	6	
U		
update software		
check current version	34	
electronic user manual	5	
from a USB storage device	34	
from network	34	
USB storage device		
control buttons	23	
options	23	
play	22	
specifications	37	
update home theater software	34	
user manual		
download	5	
navigate	4	
read	4	
update	5	

V

video

HDMI deep color	31
picture resolution	31
picture settings	30
specifications	37
synchronize picture and sound	21
video and slideshow	26
VOD code for DivX	19
watch 3D	21
video formats	37
video options	23
VOD code for DivX	19

W

wired network

settings	17
wired connection	17

wireless network

settings	18
Wi-Fi	17
Wi-Fi dongle	17
wireless connection	17

wireless speakers	13
--------------------------	----

