

Always there to help you

Register your product and get support at
www.philips.com/welcome



HTD3500



User manual

PHILIPS

Contents

1 Important	3	8 Troubleshooting	27
Safety	3		
Care for your product	4	9 Notice	29
Care of the environment	4	Copyright	29
		Compliance	29
		Trademarks	29

2 Your home theater	5	10 Language code	30
Main unit	5		
Remote control	5		

3 Connect and setup	8	11 Index	31
Speakers	8		
Connectors	9		
Connect to TV	10		
Connect audio from TV and other devices	11		

4 Use your home theater	13		
Choose sound	13		
Discs	13		
USB storage devices	14		
DivX	15		
Audio, video, and picture options	16		
Radio	17		
MP3 player	17		
Create MP3 files	18		
EasyLink	18		

5 Change settings	20		
Picture	20		
Sound	20		
Language	21		
Parental control	21		
Energy saving	22		
Apply factory settings	23		

6 Update software	24		
Check software version	24		
Update software through USB or CD-R	24		

7 Product specifications	25		
---------------------------------	----	--	--

1 Important

Read and understand all instructions before you use your home theater. If damage is caused by failure to follow instructions, the warranty does not apply.

Safety

Risk of electric shock or fire!

- Never expose the product and accessories to rain or water. Never place liquid containers, such as vases, near the product. If liquids are spilt on or into the product, disconnect it from the power outlet immediately. Contact Philips Consumer Care to have the product checked before use.
- Never place the product and accessories near naked flames or other heat sources, including direct sunlight.
- Never insert objects into the ventilation slots or other openings on the product.
- Where the mains plug or an appliance coupler is used as the disconnect device, the disconnect device shall remain readily operable.
- Disconnect the product from the power outlet before lightning storms.
- When you disconnect the power cord, always pull the plug, never the cable.

Risk of short circuit or fire!

- Before you connect the product to the power outlet, ensure that the power voltage matches the value printed on the back or bottom of the product. Never connect the product to the power outlet if the voltage is different.

Risk of injury or damage to the home theater!

- For wall-mountable products, use only the supplied wall mount bracket. Secure the wall mount to a wall that can support the combined weight of the product and the

wall mount. Koninklijke Philips Electronics N.V. bears no responsibility for improper wall mounting that results in accident, injury or damage.

- For speakers with stands, use only the supplied stands. Secure the stands to the speakers tightly. Place the assembled stands on flat, level surfaces that can support the combined weight of the speaker and stand.
- Never place the product or any objects on power cords or on other electrical equipment.
- If the product is transported in temperatures below 5°C, unpack the product and wait until its temperature matches room temperature before connecting it to the power outlet.
- Visible and invisible laser radiation when open. Avoid exposure to beam.
- Do not touch the disc optical lens inside the disc compartment.
- Parts of this product can be made of glass. Handle with care to avoid injury and damage.

Risk of overheating!

- Never install this product in a confined space. Always leave a space of at least four inches around the product for ventilation. Ensure curtains or other objects never cover the ventilation slots on the product.

Risk of contamination!

- Do not mix batteries (old and new or carbon and alkaine, etc.).
- Danger of explosion if batteries are incorrectly replaced. Replace only with the same or equivalent type.
- Remove batteries if they are exhausted or if the remote control is not to be used for a long time.
- Batteries contain chemical substances, they should be disposed of properly.

Risk of swallowing batteries!

- The product/remote control may contain a coin/button type battery, which can be swallowed. Keep the battery out of reach

of children at all times! If swallowed, the battery can cause serious injury or death. Severe internal burns can occur within two hours of ingestion.

- If you suspect that a battery has been swallowed or placed inside any part of the body, seek immediate medical attention.
- When you change the batteries, always keep all new and used batteries out of reach of children. Ensure that the battery compartment is completely secure after you replace the battery.
- If the battery compartment cannot be completely secured, discontinue use of the product. Keep out of reach of children and contact the manufacturer.



This is CLASS II apparatus with double insulation, and no protective earth provided.

Care for your product

- Do not insert any objects other than discs into the disc compartment.
- Do not insert warped or cracked discs into the disc compartment.
- Remove discs from the disc compartment if you are not using the product for an extended period of time.
- Use only microfiber cloth to clean the product.

Care of the environment



Your product is designed and manufactured with high quality materials and components, which can be recycled and reused.



When this crossed-out wheeled bin symbol is attached to a product it means that the product is covered by the European Directive 2002/96/EC. Please inform yourself about the local separate collection system for electrical and electronic products.

Please act according to your local rules and do not dispose of your old products with your normal household waste.

Correct disposal of your old product helps to prevent potential negative consequences for the environment and human health.

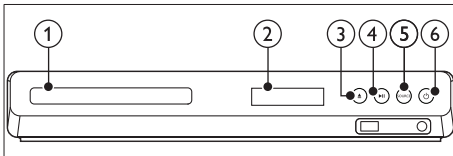


Your product contains batteries covered by the European Directive 2006/66/EC, which cannot be disposed with normal household waste. Please inform yourself about the local rules on separate collection of batteries because correct disposal helps to prevent negative consequences for the environmental and human health.

2 Your home theater

Congratulations on your purchase, and welcome to Philips! To fully benefit from the support that Philips offers, register your home theater at www.philips.com/welcome.

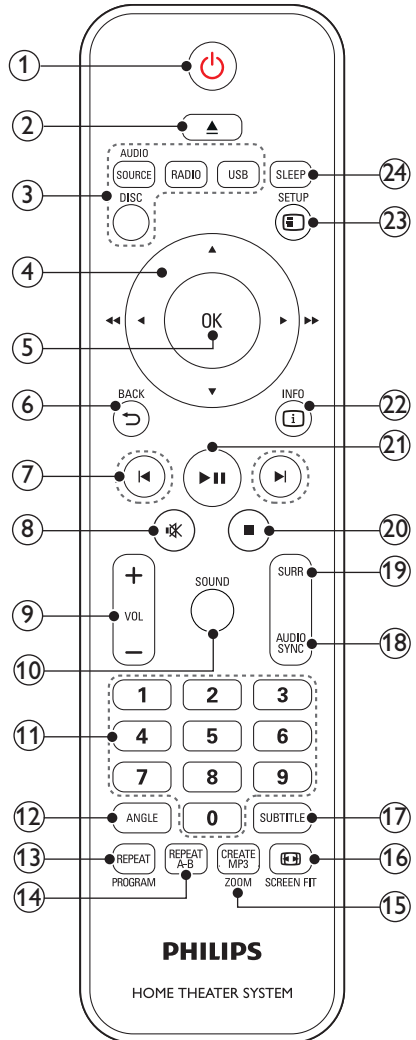
Main unit





- ① Disc compartment
- ② Display panel
- ③ ▲ (Open/Close)
Open or close the disc compartment, or eject the disc.
- ④ ►|| (Play/Pause)
Start, pause or resume play.
- ⑤ SOURCE
Select an audio or video source for the home theater.
- ⑥ ⏻ (Standby-On)
Switch the home theater on or to standby.

Remote control

This section includes an overview of the remote control.





- ① ⏻ (Standby-On)
 - Switch the home theater on or to standby.

- When EasyLink is enabled, press and hold for at least three seconds to switch all connected HDMI CEC compliant devices to standby.
- ② ▲ (Open/Close)
Open or close the disc compartment, or eject the disc.
 - ③ Source buttons
 - **DISC:** Switch to disc source. Access or exit the disc menu when you play a disc.
 - **AUDIO SOURCE:** Select an audio input source.
 - **RADIO:** Switch to FM radio.
 - **USB:** Switch to USB storage device.
 - ④ Navigation buttons
 - Navigate menus.
 - In video mode, press left or right to fast backward or fast forward; press up or down to slow forward or slow backward.
 - In radio mode, press left or right to search a radio station; press up or down to fine tune a radio frequency.
 - ⑤ OK
Confirm an entry or selection.
 - ⑥ ↶ BACK
Return to a previous menu screen.
 - ⑦ ◀ / ▶ (Previous/Next)
 - Skip to the previous or next track, chapter or file.
 - In radio mode, select a preset radio station.
 - ⑧ 🔇 (Mute)
Mute or restore volume.
 - ⑨ VOL +/-
Increase or decrease volume.
 - ⑩ SOUND
Select a sound mode.
 - ⑪ Numeric buttons
Select an item to play.
 - ⑫ ANGLE
Select video scenes recorded in different camera angles.
 - ⑬ REPEAT / PROGRAM
 - Select or turn off repeat mode.
 - In radio mode, set a radio station.
 - ⑭ REPEAT A-B
Mark two points within a chapter or track to repeat play, or turn off the repeat mode.
 - ⑮ CREATE MP3/ZOOM
 - Access the create MP3 menu.
 - Zoom into a video scene or picture. Press the **Navigation buttons** (left/right) to select a zoom factor.
 - ⑯  SCREEN FIT
Fit the picture format to the TV screen.
 - ⑰ SUBTITLE
Select subtitle language for video.
 - ⑱ AUDIO SYNC
 - Select an audio language or channel.
 - Press and hold to access audio delay setting, then press +/- to delay the audio to match the video.
 - ⑲ SURR
Select surround sound or stereo sound.
 - ⑳ ■ (Stop)
Stop play.
 - ㉑ ▶ || (Play/Pause)
Start, pause or resume play.
 - ㉒ ⓘ INFO
Access more play options while playing a disc or a USB storage device.
 - ㉓  SETUP
Access or exit the setup menu.
 - ㉔ SLEEP
Switch the home theater to standby mode after the elapsed time.

EasyLink controls

With Easylink, you can control your home theater and the TV with the following buttons on your home theater remote control (see 'EasyLink' on page 18).

-  (**Standby-On**): Press and hold to switch your home theater, TV and the connected devices to standby.
-  (**Play/Pause**): When a video disc is in the disc compartment, wake up the TV from standby, and then play a disc.

3 Connect and setup

This section helps you connect your home theater to a TV and other devices, and then set it up.

For information about the basic connections of your home theater and accessories, see the quick start guide.

Note

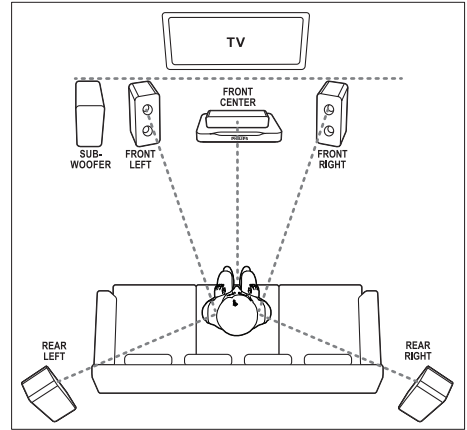
- For identification and supply ratings, refer to the type plate at the back or bottom of the product.
- Before you make or change any connections, make sure that all devices are disconnected from the power outlet.

Speakers

Position, connect, and set up your speakers for best surround sound.

Position

Speaker position plays a critical role in setting up a surround sound effect. For best results, place your speakers and the subwoofer as shown below.



Note

- Surround sound depends on factors such as room shape and size, type of wall and ceiling, windows and reflective surfaces, and speaker acoustics. Experiment with the speaker positions to find the optimum setting for you.

Follow these general guidelines, and then set up your speakers.

- 1 Seating position:**
This is the center of your listening area.
- 2 FRONT CENTER (front center) speaker:**
Place the center speaker directly in front of the seating position, either above or below your TV. Make sure that it is close to your ear height when you are seated.
- 3 FRONT LEFT (front left) and FRONT RIGHT (front right) speakers:**
Place the left and right speakers in the front, and equidistant from the center speaker in an arc, so that all the three speakers are at same distance from your seating position. For best effect, point the speakers towards the seating position and place the speakers close to the ear level (when seated).
- 4 REAR LEFT (rear left) and REAR RIGHT (rear right) speakers:**

Place the rear surround speakers to the left and right side of your seating position, either in line with it or slightly behind it. For best effect, point the speakers towards the seating position and place the speakers just above the ear level (when seated).

5 SUBWOOFER (subwoofer):

Place the subwoofer at least one meter to the left or right of the TV. Leave about ten centimeter clearance from the wall.

Connect

Connect your speakers and the subwoofer to your home theater as described in the quick start guide.

Setup

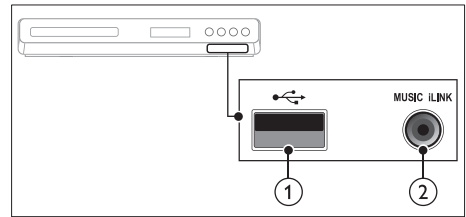
Set up your speakers through the speaker setup menu.

- 1 Connect your speakers and subwoofer as described in the Quick start guide.
- 2 Turn on your TV, and switch to the correct source for the home theater.
- 3 Press **SETUP** on your home theater remote control.
- 4 Select **[Audio Setup]**, and then press **OK**.
- 5 Change the following settings, and then press **OK**.
 - **[Speakers Volume]:** Set the volume level of each speaker.
 - **[Speakers Delay]:** Set the delay time for speakers which are placed closer to the seating position in order to obtain equal audio transmission from all the speakers.

Connectors

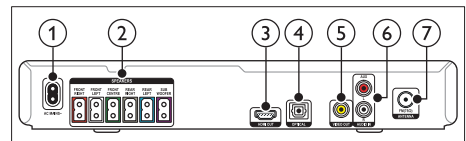
Connect other devices to your home theater:

Front



- ① **USB**
Audio, video or picture input from a USB storage device.
- ② **MUSIC iLINK**
Audio input from an MP3 player.

Back connectors



- ① **AC MAINS**
Connect to the power supply.
- ② **SPEAKERS**
Connect to the supplied speakers and subwoofer.
- ③ **HDMI OUT**
Connect to the HDMI input on the TV.
- ④ **OPTICAL**
Connect to an optical audio output on the TV or a digital device.
- ⑤ **VIDEO OUT**
Connect to the composite video input on the TV.
- ⑥ **AUDIO IN-AUX**
Connect to an analog audio output on the TV or an analog device.
- ⑦ **ANTENNA FM**
Signal input from an antenna, cable or satellite.

Connect to TV

Connect your home theater to a TV to watch videos. You can listen to audio from TV programs through your home theater speakers. Use the best quality connection available on your home theater and TV.

Option 1: Connect to TV through HDMI (ARC)

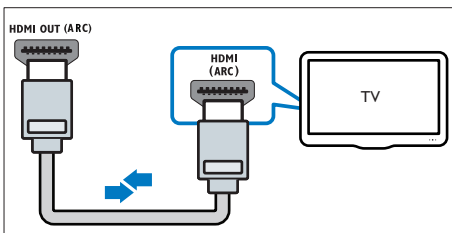
Best quality video

Your home theater supports HDMI version with Audio Return Channel (ARC). If your TV is HDMI ARC compliant, connect your home theater to the TV through the HDMI ARC connection for easy and quick setup.

With HDMI ARC, you do not need an additional audio cable to play audio from TV through your home theater.

- 1 Using a High Speed HDMI cable, connect the **HDMI OUT (ARC)** connector on your home theater to the **HDMI ARC** connector on the TV.

The **HDMI ARC** connector on the TV might be labeled **HDMI IN** or **HDMI**. For details on TV connectors, see the TV user manual.



- 2 On your TV, turn on HDMI-CEC. For details, see the TV user manual.
 - ↳ When you play a disc on your home theater, the video is automatically displayed on TV and the audio is automatically played on the home theater.

- 3 If audio from the TV does not play automatically on your home theater, set up the audio manually (see 'Set up audio for connected devices' on page 12).

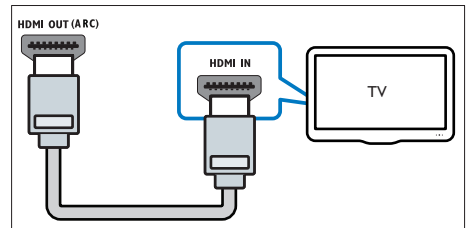
Option 2: Connect to TV through HDMI

Best quality video

If your TV is not HDMI ARC compliant, connect your home theater to the TV through a standard HDMI connection.

With a standard HDMI connection, you need an additional audio cable to play the audio from the TV through your home theater (see 'Connect audio from TV and other devices' on page 11).

- 1 Using a High Speed HDMI cable, connect the **HDMI OUT (ARC)** connector on your home theater to the **HDMI** connector on the TV.
The HDMI connector on the TV might be labeled **HDMI IN**.



- 2 On your TV, turn on HDMI-CEC. For details, see the TV user manual.
 - ↳ When you play a disc on your home theater, the video is automatically displayed on TV and the audio is automatically played on the home theater.
- 3 To play audio from TV programs through your home theater, connect an additional audio cable (see 'Connect audio from TV and other devices' on page 11).
- 4 If audio from the TV does not play automatically on your home theater, set up

the audio manually (see 'Set up audio for connected devices' on page 12).

Note

- If your TV has a DVI connector, you can use an HDMI/DVI adapter to connect to TV.

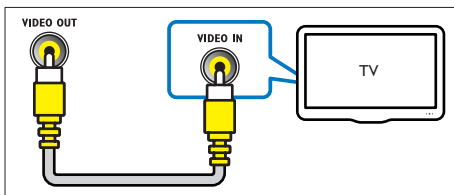
Option 3: Connect to the TV through composite video

Basic quality video

If your TV does not have HDMI connectors, connect your home theater to the TV through a composite connection. A composite connection does not support high-definition video. With a composite connection, you need an additional audio cable to play the audio from the TV through your home theater (see 'Connect audio from TV and other devices' on page 11).

- 1 Using a composite video cable, connect the **VIDEO OUT** connector on your home theater to the composite video connector on the TV.

The composite video connector might be labeled **AV IN**, **VIDEO IN**, **COMPOSITE**, or **BASEBAND**.



- 2 On your TV, switch to the correct video input.
- 3 To play audio from TV programs through your home theater; connect an additional audio cable (see 'Connect audio from TV and other devices' on page 11). On your home theater, press **SOURCE** repeatedly to select the correct audio input.

Connect audio from TV and other devices

Play audio from TV or other devices through your home theater.

Use the best quality connection available on your TV, home theater, and other devices.

Note

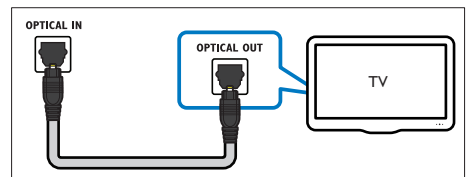
- The audio connections in this user manual are only recommendations. You can use other connections too.

Option 1: Connect audio through a digital optical cable

Best quality audio

Using an optical cable, connect the **OPTICAL** connector on your home theater to the **OPTICAL OUT** connector on the TV or other device.

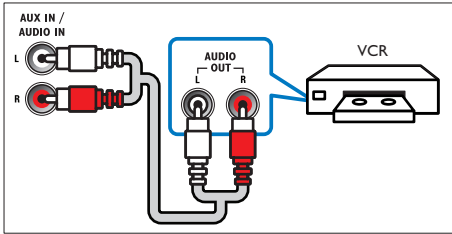
The digital optical connector might be labeled **SPDIF**, **SPDIF OUT**, or **OPTICAL**.



Option 2: Connect audio through analog audio cables

Basic quality audio

Using an analog cable, connect the **AUX** connectors on your home theater to the **AUDIO OUT** connectors on the TV or other device.



Set up audio for connected devices

When you connect a device to your home theater, check the audio settings.

- 1 On your TV and other devices, turn on HDMI-CEC. For details, see the user manual of the TV and the other device.
- 2 Select 'Amplifier' from the TV speakers menu. For details, see the TV user manual.
- 3 On your home theater, turn on System Audio Control, and then map the audio of the connected device to the correct connectors on your home theater (see 'Play audio from home theater' on page 19).

If the connected device is not HDMI-CEC compliant, press **SOURCE** repeatedly on your home theater to select the correct audio input.

4 Use your home theater

This section helps you use the home theater to play media from a wide range of sources.

Before you start

- Make the necessary connections described in the Quick start guide and the user manual.
- Switch the TV to the correct source for the home theater.

Choose sound

This section helps you choose the ideal sound for your video or music.

Sound mode

Select predefined sound modes to suit your video or music.

- 1 Press **SOUND** repeatedly to select a sound mode.
 - **MOVIE**: Enjoy a cinematic audio experience, specially enhanced for movies.
 - **MUSIC**: Recreate the original recording environment of your music, in the studio or at a concert.
 - **ORIGINAL**: Experience the original sound of your movies and music, without added sound effects.
 - **NEWS**: Hear every word with optimized speech and clear vocals.
 - **GAMING**: Enjoy thrilling arcade sounds, ideal for action-packed video games or loud parties.

Surround sound mode

Experience an immersive audio experience with surround sound modes.

- 1 Press **SURR** repeatedly to select a surround mode.
 - **MULTI-CH**: Traditional 5.1 channel for a more relaxing cinematic experience.
 - **STEREO**: Two-channel stereo sound. Ideal for listening to music.

Note

- If the audio source is a 2.1 channel, multi-channel mode will output 5-channel stereo sound.

Discs

Your home theater can play DVDs, VCDs, and CDs. It can also play discs that you've made at home, such as CD-R discs of photos and music.

What you need

- Audio and video connection between your home theater and the TV.
- An audio or a video disc.

Play discs

- 1 Insert a disc into the home theater.
 - ↳ Your TV switches to the correct source and the disc plays automatically. If it does not, press **DISC**.
- 2 Press the play buttons to control play (see 'Play buttons' on page 13).

Play buttons

Button	Action
Navigation buttons	Navigate menus.
OK	Confirm an entry or selection.
▶ (Play/Pause)	Start, pause or resume play.
■	Stop play.
◀ / ▶	Skip to the previous or next track, chapter or file.

Button	Action
◀◀ / ▶▶	Fast backwards or fast forwards. Press repeatedly to change the search speed.
Navigation buttons (left/right)	Rotate the picture clockwise or counter-clockwise.
Navigation buttons (up/down)	Flip the picture vertically or horizontally.
SUBTITLE	Select subtitle language for video.
DISC	Access or exit the disc menu.
AUDIO SYNC	Select an audio language or channel.
◻ FIT	Fit the picture format to the TV screen.
ZOOM	Zoom into a video scene or picture.
REPEAT	Select or turn off repeat mode.
REPEAT A-B	Mark two points within a chapter or track to repeat play, or turn off the repeat mode.
ANGLE	Select video scenes recorded in different camera angles.
◻ INFO	Access the advanced options when you play your audio, video, or media files.

Display menu for VCD and SVCD

Display the content menu on VCD and SVCD discs.

- 1 Press **◻ SETUP**.
- 2 Select **[Preference Setup]**, and then press **OK**.
- 3 Select **[PBC] > [On]**, and then press **OK**.

≡ Note

- To skip the content menu, select **[Off]**.
- While playing a VCD/SVCD, you can press **DISC** to turn off or on the PBC (playback control).

Display menu for MP3/JPEG

You can choose how you want the MP3 contents to display.

- 1 Press **◻ SETUP**.
- 2 Select **[Preference Setup]**, and then press **OK**.
- 3 Select **[MP3/JPEG Display]**, and then press **OK**.
- 4 Select the following options, then press **OK**.
 - **[View Folders]**: Display the MP3 folders.
 - **[View Files]**: Display the MP3 files.

Synchronize picture and sound

If the audio and video are not synchronized, delay the audio to match the video.

- 1 Press **◻ SETUP**.
- 2 Select **[Audio Setup]**, and then press **OK**.
- 3 Select **[Audio Sync]**, and then press **OK**.
- 4 Press the **Navigation buttons** (left/right) to synchronize the audio with the video.
- 5 Press **OK** to confirm.

≡ Note

- Press and hold **AUDIO SYNC** on the remote control for quick access to the audio sync setup menu.

USB storage devices

Enjoy pictures, audio and video on a USB storage device.

What you need

- A USB storage device that is formatted for FAT, and complies with the Mass Storage Class.
- A USB extension cable, if the USB storage device does not fit into the connector.

Note

- You can use digital cameras connected by USB if they can play the files without using a special computer program.

Play files

- 1 Connect the USB storage device to the home theater.
- 2 Press **USB**.
↳ A content browser is displayed.
- 3 Select a file, and then press **OK**.
- 4 Press the playback buttons to control play (see 'Play buttons' on page 13).

DivX

Play DivX videos from :

- a disc (see 'Discs' on page 13),
- a USB storage device (see 'USB storage devices' on page 14).

VOD code for DivX

Before you purchase DivX videos and play them on your home theater, register the home theater on www.divx.com using the DivX VOD code.

- 1 Press **SETUP**.
- 2 Select **[General Setup]**, and then press **OK**.
- 3 Select **[DivX(R) VOD Code]**, and then press **OK**.
↳ The DivX VOD registration code for your home theater is displayed.

Subtitles

If your video has subtitles in multiple languages, select a subtitle language.

- 1 While playing video, press **SUBTITLE** to select a language.

Note

- Make sure that the subtitle file has the same name as the video file. For example, if the video file is named 'movie.avi', save the subtitle file as 'movie.srt' or 'movie.sub'.
- Your home theater can play subtitle files in the following formats: .srt, .sub, .txt, .ssa, .ass, .smi, and .sami. These files do not appear in the file navigation menu.
- If the subtitles do not appear correctly, change the character set.

Subtitle character set

If the subtitles do not appear correctly, change the character set that supports the DivX subtitle.

- 1 Press **SETUP**.
- 2 Select **[Preference Setup]**, and then press **OK**.
- 3 Select **[DivX Subtitle]**, and then press **OK**.
- 4 Select a character set, and then press **OK**.

Character Set	Language
[Standard]	English, Albanian, Danish, Dutch, Finnish, French, Gaelic, German, Italian, Kurdish (Latin), Norwegian, Portuguese, Spanish, Swedish and Turkish
[Central Europe]	Albanian, Croat, Czech, Dutch, English, German, Hungarian, Irish, Polish, Romanian, Slovak, Slovene and Sorbian
[Cyrillic]	Bulgarian, Belorussian, English, Macedonian, Moldavian, Russian, Serbian and Ukrainian
[Greek]	Greek
[Hebrew]	Hebrew
[Chinese(Simp)]	Simplified Chinese

Audio, video, and picture options

Use advanced features when you play audio, video, or media files from a disc or a USB storage device.

Audio options

- 1 Press **INFO** repeatedly to cycle through the following options:
 - Show the current track information and time.
 - **[Disc Go To:%c%2d:%2d%C]**: Skip to a specific part of the disc by entering the disc time.
 - **[Track Go To:%c%2d:%2d%C]**: Skip to a specific part of the track by entering the track time.
 - **[Select Track:%c%2d%C/%2d]**: Select a specific track.

Video options

- 1 Press **INFO**.
↳ The video options menu is displayed.
- 2 Press the **Navigation buttons** and **OK** to select and change:
 - **[Title]**: Select a specific title.
 - **[Chapter]**: Select a specific chapter.
 - **[Track]**: Select a specific track (for VCD/SVCD only).
 - **[Audio]**: Select audio language for video.
 - **[Subtitle]**: Select subtitle language for video.
 - **[Angle]**: Select video scenes recorded in different camera angles.
 - **[TT Time]**: Skip to a specific part of the video by entering the title time.
 - **[Ch Time]**: Skip to a specific part of the video by entering the chapter time.
 - **[Disc Time]**: Skip to a specific part of the video by entering the disc time (for VCD/SVCD only).

- **[Track Time]**: Skip to a specific part of the video by entering the track time (for VCD/SVCD only).
- **[Preview]**: Select a content preview for disc.
- **[Repeat]**: Select a repeat mode.
- **[Time Disp.]**: Select the information of time display.

Picture options

- 1 Press **INFO** to access picture preview mode.
↳ 12 thumbnail pictures are displayed.
- 2 Press **◀ / ▶** to go to previous or next preview page.
- 3 Press the **Navigation buttons** and **OK** to select a picture.

Slideshows

While playing audio, access fun features such as picture and musical slideshows.

Picture slideshows

View a slideshow of your pictures stored in your disc or a USB storage device.

- 1 Select a picture from a disc or USB storage device, and then press **▶||**.
- 2 Press **■** to stop the slideshow.

Musical slideshows

Create a musical slideshow to play music and pictures at the same time.

- 1 Select a music track, and then press **OK**.
- 2 Press **↵ BACK**, and go to the picture folder.
- 3 Select a picture, and then press **OK** to start the slideshow.
- 4 Press **■** to stop slideshow.
- 5 Press **■** again to stop music.

Radio

Listen to FM radio on your home theater, and store up to 40 radio stations.

What you need

- FM antenna.



Note

- AM and digital radio are not supported.
- If no stereo signal is detected, you are prompted to install the radio stations again.
- For the best reception, place the antenna away from the TV or other sources of radiation.

Tune stations

- 1 Connect the FM antenna as described in the Quick start guide.
- 2 Press **RADIO**.
 - ↳ If you have already installed the radio stations, the last channel that you listened to is played.
 - ↳ If you have not installed any radio stations, the message **AUTO INSTALL...PRESS PLAY** appears on the display panel. Press **▶ (Play)**.
- 3 Press the following buttons to listen or to change radio stations:

Button	Action
◀ / ▶	Select a preset radio station.
Navigation buttons (left/right)	Search for a radio station.
Navigation buttons (up/down)	Fine tune a radio frequency.
■	Press to stop the installation of radio stations. Press and hold to erase the preset radio station.

-
- PROGRAM** Manual:
- 1) Press **PROGRAM**.
 - 2) Press **Numeric buttons** to select a preset number.
 - 3) Press **OK** to store the radio station.
 - 4) Repeat the steps above to store other radio stations.
- Automatic: Press and hold for three seconds to reinstall the radio stations
-

Listen to radio

- 1 Press **RADIO**.
 - To listen to a preset station, press **◀** or **▶**.
 - To search for a radio station, and then listen, press **Navigation buttons** (left/right).
- 2 Press **+/- (Volume)** to change the volume.

MP3 player

Connect your MP3 player to play your audio files or music.

What you need

- An MP3 player.
- A 3.5mm stereo audio cable.

Play music

- 1 Connect the MP3 player to the home theater as described in the Quick start guide.
- 2 Press **AUDIO SOURCE** repeatedly until '**MUSIC I-LINK**' appears on the display panel.
- 3 Press the buttons on the MP3 player to select and play audio files or music.

Create MP3 files

Use your home theater to convert audio CDs into MP3 files.

What you need

- An audio disc.
- A USB storage device

- 1** Connect a USB storage device to the home theater.
- 2** Play your audio CD (CDDA/HDCD).
- 3** Press **CREATE MP3**.
↳ The create MP3 screen is displayed.
- 4** Press the **Navigation buttons** and **OK** to select and change:
 - **[Speed]**: Select the write-to-file speed.
 - **[Bitrate]**: Select the conversion quality.
 - **[Device]**: Select the USB storage device which you use to store the MP3 files.
- 5** Navigate to the right panel, and then select the audio tracks and press **OK**.
 - To select all tracks, navigate to **[Select All]**, and then press **OK**.
- 6** Select **[Start]**, and then press **OK** to start the MP3 conversion.
↳ A new folder which contains the MP3 files is created in the USB storage device.
 - To exit the menu, select **[Exit]**, and then press **OK**.

Note

- When the conversion is in process, do not press any buttons.
- DTS CDs and copy-protected CDs cannot be converted.
- Write-protected or password-protected USB storage device cannot be used to store MP3 files.

EasyLink

The home theater supports Philips EasyLink, which uses the HDMI-CEC (Consumer Electronics Control) protocol. EasyLink-compliant devices that are connected through HDMI can be controlled by a single remote control.

Philips does not guarantee 100% interoperability with all HDMI-CEC devices.

What you need

- HDMI-CEC compliant devices.
- An HDMI connection between the connected devices.

Switch on

- 1** On the TV and other connected devices, turn on the HDMI-CEC operations. For details, see the manual of the TV or other devices.
- 2** Press **⏏** **SETUP**.
- 3** Select **[Video Setup]**, and then press **OK**.
- 4** Select **[HDMI Setup]** > **[EasyLink Setup]** > **[EasyLink]**, and then press **OK**.
- 5** Select **[On]**, and then press **OK**.

Control devices

Control the home theater and the other connected HDMI-CEC compliant devices with a single remote control.

One-touch play

If you enable One-touch play, the TV automatically switches to the correct channel when you play a disc in your home theater.

One-touch standby

When you press and hold **⏻ (Standby)** on the remote control, the home theater and all the connected HDMI-CEC devices (that support one-touch standby) switch to the standby mode.

If one-touch standby is enabled on your home theater, you can switch to standby with the remote control of the TV or other HDMI-CEC devices.

System Audio Control

When you play a device that has its audio output routed to the home theater, the home theater switches to the corresponding audio source automatically.

To use one-touch audio, turn on System Audio Control and follow the instructions on the TV to map connected devices to the audio input connectors of the home theater.

Audio Input Mapping

When you connect a new device to your home theater, map the device to the audio input connector (see 'Play audio from home theater' on page 19).

Play audio from home theater

Play the audio from a connected device through your home theater:

- 1 Press **⏻ SETUP**.
- 2 Select **[Video Setup]**, and then press **OK**.
- 3 Select **[HDMI Setup] > [EasyLink Setup] > [System Audio Control] > [On]**, and then press **OK**.
 - To play the audio from the TV speakers, select **[Off]**, and skip the following steps.
- 4 Select **[HDMI Setup] > [EasyLink Setup] > [Audio Input Mapping]**, and then press **OK**.
- 5 Follow the instructions on the TV to map the audio of the connected device to the audio inputs on your home theater.



5 Change settings

This section helps you to change the settings of your home theater.

Caution

- Most of the settings are already configured with the best value for your home theater. Unless you have a reason to change a setting, it is best to leave it at the default value.

Note

- You cannot change a setting that is grayed out.
- To return to the previous menu, press  BACK. To exit the menu, press  SETUP.


Picture

Change the picture settings to suit your preferences.

Note


- The best setting is automatically selected for the TV. If you change the setting, make sure that the TV supports the new settings.

Picture settings and format

- 1 Press  SETUP.
- 2 Select **[Video Setup]**, and then press **OK**.
- 3 Change the following settings, and then press **OK**:
 - **[TV System]**: For TV supported video format.
 - **[TV Display]**: For TV picture display format.
 - **[Picture Settings]**: Predefined color settings.


Picture resolution

To enjoy high definition HDMI video output, set the HDMI video settings that best match up with your TV capability.

- 1 Press  SETUP.
- 2 Select **[Video Setup]**, and then press **OK**.
- 3 Select **[HDMI Setup]**, and then press **OK**.
- 4 Change the following settings, and then press **OK**:
 - **[Wide Screen Format]**: For 16:9 wide screen TV display setting.
 - **[HDMI Video]**: HDMI resolution.

High definition picture

Support high definition JPEG pictures.


- 1 Press  SETUP.
- 2 Select **[Video Setup]**, and then press **OK**.
- 3 Select **[HD JPEG] > [On]**, and then press **OK**.

Sound

Change the sound settings to suit your preference.

HDMI audio

HDMI audio is automatically down-mixed to two channel for TV speakers. If you do not want to output audio through your TV, disable the HDMI audio.

- 1 Press  SETUP.
- 2 Select **[Audio Setup]**, and then press **OK**.
- 3 Select **[HDMI Audio] > [Off]**, and then press **OK**.

Night mode

For quiet listening, decrease the volume of loud sounds when you play discs. Night mode is only available for Dolby-encoded DVD and Blu-ray discs.

- 1 Press **⏏** **SETUP**.
- 2 Select **[Audio Setup]**, and then press **OK**.
- 3 Select **[Night Mode]** > **[On]**, and then press **OK**.

Language

Select a language for the home menu, audio, and subtitles.

Home menu

- 1 Press **⏏** **SETUP**.
- 2 Select **[General Setup]**, and then press **OK**.
- 3 Select **[OSD Language]**, and then press **OK**.
- 4 Select a menu language for your home theater, and then press **OK**.

Disc audio

- 1 Press **⏏** **SETUP**.
- 2 Select **[Preference Setup]**, and then press **OK**.
- 3 Select **[Audio]**, and then press **OK**.
- 4 Select an audio language for discs, and then press **OK**.

Note

- If your preferred disc language is not available, select **[Others]** from the list, and enter the 4-digit language code found at the end of this user manual (see 'Language code' on page 30).
- If you select a language that is not available on a disc, the home theater uses the default language of the disc.

Disc subtitle

- 1 Press **⏏** **SETUP**.
- 2 Select **[Preference Setup]**, and then press **OK**.
- 3 Select **[Subtitle]**, and then press **OK**.
- 4 Select a subtitle language for discs, and then press **OK**.

Disc menu

- 1 Press **⏏** **SETUP**.
- 2 Select **[Preference Setup]**, and then press **OK**.
- 3 Select **[Disc Menu]**, and then press **OK**.
- 4 Select a menu language for discs, and then press **OK**.

Note

- If your preferred disc language is not available, select **[Others]** from the list, and enter the 4-digit language code found at the end of this user manual (see 'Language code' on page 30).
- If you select a language that is not available on a disc, the home theater uses the default language of the disc.

Parental control

Restrict access to discs.

Password

You can set or change your password to play a restricted disc.

- 1 Press **⏏** **SETUP**.
- 2 Select **[Preference Setup]**, and then press **OK**.
- 3 Select **[Password]**, and then press **OK**.
↳ A change password menu is displayed.
- 4 Follow the instructions on the TV to set or change password.

- If you do not have a password or you have forgotten, enter **0000**.

5 Press **OK**.

Ratings

Some discs are recorded with ratings according to age. You can set up your home theater to play only discs with an age rating lower than your child's age.

- 1** Press **⏏ SETUP**.
- 2** Select **[Preference Setup]**, and then press **OK**.
- 3** Select **[Parental]**, and then press **OK**.
- 4** Select an age rating, and then press **OK**.
 - To play all discs irrespective of the rating, select level **8**.
- 5** Use the **Numeric buttons** to enter the password.

Lock disc

To restrict access to discs that are not encoded with ratings and parental control, lock the disc manually. You can lock up to 20 discs on your home theater.

- 1** While playing a disc, press **⏏ SETUP**.
- 2** Select **[General Setup]**, and then press **OK**.
- 3** Select **[Disc Lock] > [Lock]**, and then press **OK**.
 - ↳ A message prompts you to enter the password.
- 4** Enter the password with the **Numeric buttons**.
 - ↳ The disc is locked.
 - To play the locked disc, enter the password.

Energy saving

Save energy by changing the following settings.

Auto standby

When playing a disc or a USB storage device, automatically switch your home theater to standby if:

- it is in pause or stop mode, and
- no button is pressed for 30 minutes.

- 1** Press **⏏ SETUP**.
- 2** Select **[General Setup]**, and then press **OK**.
- 3** Select **[Auto Standby] > [On]**, and then press **OK**.

Sleep timer

Set timers to switch the home theater to standby after a specified time.

- 1** Press **⏏ SETUP**.
- 2** Select **[General Setup]**, and then press **OK**.
- 3** Select **[Sleep Timer]**, and then press **OK**.
- 4** Select the duration of the sleep timer.
 - ↳ The sleep timer can be set up to 60 minutes. If the sleep timer is set to **[Off]**, it switches off.
- 5** Press **OK** to activate.
 - ↳ The home theater switches to standby after the specified time.

Screen saver

Automatically switch your home theater to screen saver mode if:

- it is in pause or stop mode, and
- no button is pressed for 10 minutes.

- 1** Press **⏏ SETUP**.
- 2** Select **[General Setup]**, and then press **OK**.
- 3** Select **[Screen Saver] > [On]**, and then press **OK**.

Display panel

Change the brightness of the home theater display panel.

- 1 Press **⏏** **SETUP**.
- 2 Select [**General Setup**], and then press **OK**.
- 3 Select [**Display Dim**], and then press **OK**.
- 4 Select the brightness, and then press **OK**.

Apply factory settings

Reset your home theater to the default settings. You cannot reset the parental control settings.

- 1 Press **⏏** **SETUP**.
- 2 Select [**Preference Setup**], and then press **OK**.
- 3 Select [**Default**], and then press **OK**.
- 4 Select [**Reset**], and then press **OK**.

6 Update software

To continue to get the best features and support for your home theater, update the software regularly. Compare the version of your current software with the latest version on www.philips.com/support.

Check software version

- 1 Press **⏏** **SETUP**.
- 2 Select [**Preference Setup**], and then press **OK**.
- 3 Select [**Version Info.**], and then press **OK**.
↳ The software version is displayed.

Update software through USB or CD-R

What you need

- A CD-R or a USB flash drive with at least 75MB of memory. The USB flash drive must be FAT formatted. Do not use a USB hard drive.
- A computer with Internet access.
- An archive utility that supports the ZIP file format (for example, WinZip® for Microsoft® Windows® or StuffIt® for Macintosh®).

Step 1: Download the latest software

- 1 Connect a USB flash drive or insert a CD-R to your computer.
- 2 In your web browser, go to www.philips.com/support.
- 3 At the Philips Support website, find your product and locate the **Software and drivers**.

↳ The software update is available as a zip file.

- 4 Save the zip file in the root directory of your USB flash drive or CD-R.
- 5 Use the archive utility to extract the software update file in the root directory.
- 6 Remove the USB flash drive or CD-R from your computer.

Step 2: Update the software



Warning

- If you use a USB flash drive, make sure that there is no disc in the disc compartment, and the disc compartment is closed.

- 1 Connect the USB flash drive or insert the CD-R to your home theater.
- 2 Switch your TV to the correct source for your home theater.
- 3 Follow the instructions on the TV to complete the update.
↳ When the software update is complete, the home theater automatically switches off. If it does not, disconnect the power cord for a few seconds, and then reconnect it.



Note

- When the software update is in progress, do not turn off the power, or remove the USB flash drive or CD-R.

7 Product specifications

Note

- Specifications and design are subject to change without notice.

Region codes

The type plate on the back or bottom of the home theater shows which regions it supports.

Country	DVD
Europe, United Kingdom	
Asia Pacific, Taiwan, Korea	
Latin America	
Australia, New Zealand	
Russia, India	
China	

Media formats

- DVD-Video, DVD+R/+RW, DVD-R/-RW, DVD+R/-R DL, CD-R/CD-RW, Audio CD, Video CD/SVCD, Picture files, MP3 media, WMA media, DivX media, USB storage device

File formats

- Audio: .mp3, .wma

- Video: .avi, .divx, .mpg, .mpeg,
- Picture: .jpg, .jpeg

Amplifier

- Total output power: 300W RMS (30% THD)
- Frequency response: 20 Hz-20 kHz / ± 3 dB
- Signal-to-noise ratio: > 65 dB (CCIR) / (A-weighted)
- Input sensitivity:
 - AUX: 2 V
 - Music iLink: 1 V

Video

- Signal system: PAL / NTSC/Multi
- HDMI output: 480i/576i, 480p/576p, 720p, 1080i, 1080p

Audio

- S/PDIF Digital audio input:
 - Optical: TOSLINK
- Sampling frequency:
 - MP3: 32 kHz, 44.1 kHz, 48 kHz
 - WMA: 44.1 kHz, 48 kHz
- Constant bit rate:
 - MP3: 32 kbps - 320 kbps
 - WMA: 64 kbps - 192 kbps

Radio

- Tuning range:
 - Europe/Russia/China: FM 87.5-108 MHz (50 kHz)
 - Asia Pacific/Latin America: FM 87.5-108 MHz (50/100 kHz)
- Signal-to-noise ratio: FM 50 dB
- Frequency response: FM 200 Hz-12.5 kHz / ± 6 dB

USB

- Compatibility: Hi-Speed USB (2.0)

- Class support: USB Mass Storage Class (MSC)
- File system: FAT16, FAT32
- Maximum memory support: < 160 GB

- Cable length (rear): 7 m

Main unit

- Power supply:
 - Europe/China/Russia/India: 220-240V~, 50 Hz
 - Latin America/Asia Pacific: 110-240V~, 50-60 Hz
- Power consumption: 55 W
- Standby power consumption: ≤ 0.5 W
- Dimensions (WxHxD): 360 x 58 x 325 mm
- Weight: 2.3 kg

Remote control batteries

- 2 x AAA-R03-1.5 V

Laser

- Type: Semiconductor laser GaAlAs (CD)
- Wave length: 645 - 665 nm (DVD), 770 - 800 nm (CD)
- Output power: 6 mW (DVD), 7 mW (VCD/CD)
- Beam divergence: 60 degrees.

Subwoofer

- Output power: 50 W RMS (30% THD)
- Impedance: 4 ohm
- Speaker drivers: 133 mm (5.25") woofer
- Dimensions (WxHxD): 160 x 265 x 265 mm
- Weight: 2.50 kg
- Cable length: 3 m

Speakers

Center speaker:

- Output power: 50 W RMS (30% THD)
- System: 1 x 63.5 mm (2.5") full range
- Speaker impedance: 4 ohm
- Speaker drivers: 1 x 63.5 mm (2.5") woofer
- Dimensions (WxHxD): 84.5 x 89 x 89 mm
- Weight: 0.27 kg
- Cable length: 2 m

Front/Rear speaker:

- Output power: 4 x 50 W RMS (30% THD)
- Speaker impedance: 4 ohm
- Speaker drivers: 1 x 63.5 mm (2.5") full range
- Dimensions (WxHxD): 84.5 x 89 x 89 mm
- Weight (front): 0.27 kg/each
- Weight (rear): 0.27 kg/each
- Cable length (front): 3 m

8 Troubleshooting



Warning

- Risk of electric shock. Never remove the casing of the product.

To keep the warranty valid, never try to repair the product yourself.

If you have problems using this product, check the following points before you request service.

If you still have a problem, get support at www.philips.com/support.

Main unit

The buttons on the home theater do not work.

- Disconnect the home theater from the power supply for a few minutes, then reconnect.

Picture

No picture.

- Make sure that the TV is switched to the correct source for the home theater.

No picture on a TV connected through HDMI.

- Make sure that the HDMI cable is not faulty. If it is faulty, replace it with a new cable.
- If this happens when you change the HDMI video resolution, switch to its default mode: Press **▲** to open the disc compartment, and then press **304** on the remote control.
- Wait for 10 seconds for auto recovery, or change the HDMI video setting (see 'Picture resolution' on page 20).

Disc does not play high-definition video.

- Make sure that the disc contains high-definition video.

- Make sure that the TV supports high-definition video.
- Use an HDMI cable to connect to the TV.

Sound

No sound from home theater speakers.

- Connect the audio cable from your home theater to your TV or other devices (see 'Connect audio from TV and other devices' on page 11).
- Reset your home theater to its factory settings (see 'Apply factory settings' on page 23), then switch it off and switch on again.
- On your home theater, press **SOURCE** repeatedly to select the correct audio input.

Distorted sound or echo.

- If you play audio from the TV through the home theater, make sure that the TV is muted.

Audio and video are not synchronized.

- 1) Press and hold **AUDIO SYNC**. 2) Press **+/-** within five seconds to synchronize the audio with the video.

Play

Cannot play a disc.

- Clean the disc.
- Make sure that the home theater supports the type of disc (see 'Media formats' on page 25).
- Make sure that the home theater supports the region code of the disc (see 'Region codes' on page 25).
- If the disc is a DVD±RW or DVD±R disc, make sure that it is finalized.

Cannot play a DivX file.

- Make sure that the DivX file is encoded according to the 'Home Theater Profile' with the DivX encoder.
- Make sure that the DivX file is complete.

DivX subtitles do not display correctly.

- Make sure that the subtitle file name is the same as the movie file name (see 'Subtitles' on page 15).
- Select the correct character set: 1) Press **⏏ SETUP**. 2) Select **[Preference Setup] > [DivX Subtitle]**. 3) Select the supported character set. 4) Press **OK**.

Cannot read the contents of a USB storage device.

- Make sure that the format of the USB storage device is compatible with the home theater.
- Make sure that the file system on the USB storage device is supported by the home theater.

'input invalid' or 'x' sign appears on the TV.

- The operation is not possible.

EasyLink does not work.

- Make sure that the home theater is connected to a Philips brand EasyLink TV, and the EasyLink option is on (see 'EasyLink' on page 18).

When you switch on the TV, the home theater automatically switches on.

- This behavior is normal when you are using Philips EasyLink (HDMI-CEC). To make the home theater work independently, switch off EasyLink.

9 Notice

This section contains the legal and trademark notices.

Copyright



This item incorporates copy protection technology that is protected by U.S. patents and other intellectual property rights of Rovi Corporation. Reverse engineering and disassembly are prohibited.

Compliance



This product complies with the radio interference requirements of the European Community.

Trademarks



Manufactured under license from Dolby Laboratories. Dolby and the double-D symbol are trademarks of Dolby Laboratories.



DivX ®, DivX Ultra ®, DivX Certified ® and associated logos are trademarks of Rovi Corporation or its subsidiaries and are used under license.

DivX Ultra ® Certified to play DivX ® video with advanced features and premium content. ABOUT DIVX VIDEO: DivX ® is a digital video format created by DivX, LLC, a subsidiary of Rovi Corporation. This is an official DivX Certified ® device that plays DivX video. Visit divx.com for more information and software tools to convert your files into DivX videos. ABOUT DIVX VIDEO-ON-DEMAND: This DivX Certified ® device must be registered in order to play purchased DivX Video-on-Demand (VOD) movies. To obtain your registration code, locate the DivX VOD section in your device setup menu. Go to vod.divx.com for more information on how to complete your registration.



HDMI, and HDMI logo, and High-Definition Multimedia Interface are trademarks or registered trademarks of HDMI licensing LLC in the United States and other countries.



10 Language code

Abkhazian	6566	Inupiaq	7375	Pushto	8083
Afar	6565	Irish	7165	Russian	8285
Afrikaans	6570	Íslenska	7383	Quechua	8185
Amharic	6577	Italiano	7384	Raeto-Romance	8277
Arabic	6582	Ivrit	7269	Romanian	8279
Armenian	7289	Japanese	7465	Rundi	8278
Assamese	6583	Javanese	7486	Samoan	8377
Avestan	6569	Kalaallisut	7576	Sango	8371
Aymara	6589	Kannada	7578	Sanskrit	8365
Azerhijani	6590	Kashmiri	7583	Sardinian	8367
Bahasa Melayu	7783	Kazakh	7575	Serbian	8382
Bashkir	6665	Kernewek	7587	Shona	8378
Belarusian	6669	Khmer	7577	Shqip	8381
Bengali	6678	Kinyarwanda	8287	Sindhi	8368
Bihari	6672	Kirghiz	7589	Sinhalese	8373
Bislama	6673	Komi	7586	Slovensky	8373
Bokmål, Norwegian	7866	Korean	7579	Slovenian	8376
Bosanski	6683	Kuanyama; Kwanyama	7574	Somali	8379
Brezhoneg	6682	Kurdish	7585	Sotho; Southern	8384
Bulgarian	6671	Lao	7679	South Ndebele	7882
Burmese	7789	Latina	7665	Sundanese	8385
Castellano, Español	6983	Latvian	7686	Suomi	7073
Catalán	6765	Letzeburgesch;	7666	Swahili	8387
Chamorro	6772	Limburgan; Limburger	7673	Swati	8383
Chechen	6769	Lingala	7678	Svenska	8386
Chewa; Chichewa; Nyanja	7889	Lithuanian	7684	Tagalog	8476
中文	9072	Luxembourgish;	7666	Tahitian	8489
Chuang; Zhuang	9065	Macedonian	7775	Tajik	8471
Church Slavic; Slavonic	6785	Malagasy	7771	Tamil	8465
Chuvash	6786	Magyar	7285	Tatar	8484
Corsican	6779	Malayalam	7776	Telugu	8469
Česky	6783	Maltese	7784	Thai	8472
Dansk	6865	Manx	7186	Tibetan	6679
Deutsch	6869	Maori	7773	Tigrinya	8473
Dzongkha	6890	Marathi	7782	Tonga (Tonga Islands)	8479
English	6978	Marshallese	7772	Tsonga	8483
Esperanto	6979	Moldavian	7779	Tswana	8478
Estonian	6984	Mongolian	7778	Türkçe	8482
Euskara	6985	Nauru	7865	Türkmen	8475
Ελληνικά	6976	Navaho; Navajo	7886	Twí	8487
Faroese	7079	Ndebele, North	7868	Uighur	8571
Français	7082	Ndebele, South	7882	Ukrainian	8575
Frysk	7089	Ndonga	7871	Urdu	8582
Fijian	7074	Nederlands	7876	Uzbek	8590
Gaelic; Scottish Gaelic	7168	Nepali	7869	Vietnamese	8673
Gallegan	7176	Norsk	7879	Volapuk	8679
Georgian	7565	Northern Sami	8369	Walloon	8765
Gikuyu; Kikuyu	7573	North Ndebele	7868	Welsh	6789
Guarani	7178	Norwegian Nynorsk;	7878	Wolof	8779
Gujarati	7185	Occitan; Provençal	7967	Xhosa	8872
Hausa	7265	Old Bulgarian; Old Slavonic	6785	Yiddish	8973
Herero	7290	Oriya	7982	Yoruba	8979
Hindi	7273	Oromo	7977	Zulu	9085
Hiri Motu	7279	Ossetian; Ossetic	7983		
Hrwatski	6779	Pali	8073		
Ido	7379	Panjabi	8065		
Interlingua (International)	7365	Persian	7065		
Interlingue	7365	Polski	8076		
Inuktitut	7385	Português	8084		

11 Index

A	
amplifier	25
audio	
HDMI audio	20
predefined modes	13
quality	11
settings	20
speaker setup	9
specifications	25
audio input mapping	19
audio language	21
audio options	16
auto standby	22
<hr/>	
B	
brightness	23
<hr/>	
C	
care	
environment	4
product	4
connect	
speakers	9
TV (Composite)	11
TV (HDMI)	10
connectors	
front connectors	9
control	
disc play	13
Easylink (HDMI-CEC)	7
main unit	5
parental control	21
radio	17
create MP3	18
<hr/>	
D	
disable	
HDMI-CEC	18
discs	
audio language	21
audio options	16
<hr/>	
control buttons	
DivX	15
lock/unlock	22
menu language	21
options	16
picture	16
play	13
subtitle	21
synchronize picture and sound	14
time search	16
titles	16
display	
MP3/JPEG menu	14
VCD/SVCD menu	14
display panel	
DivX	5
<hr/>	
DivX	
character set	15
subtitles	15
VOD code	15
<hr/>	
E	
EasyLink (HDMI-CEC)	
audio input mapping	19
control buttons	7
one-touch play	18
one-touch standby	18
play audio	19
system audio control	18
enable	
auto standby	22
HDMI-CEC	18
screen saver	22
energy	
auto standby	22
brightness	23
screen saver	22
sleep timer	22
<hr/>	
F	
factory settings	23
FM antenna	9
<hr/>	
H	
HDMI	
audio	20

video settings	20
HDMI-CEC	18

L

language	
audio	21
disc menu	21
language code	30
onscreen menu	21
subtitle	21

M

main unit	
overview	5
specifications	26
troubleshooting	27
manually setup speakers	9
media formats	25
MP3	
connector	9
create MP3	18
display contents	14
play	17

O

one-touch play	18
one-touch standby	18
overview	
connectors	9
HDMI-CEC	18
main unit	5
remote control	5
settings	20
speaker setup	9

P

parental control	
lock disc	22
password	21
ratings	22
password	21
Philips Easylink	18
picture	
high resolution JPEG	20

settings	20
slideshows	16
troubleshooting	27
picture options	16
play	
discs	13
MP3	17
radio	25
slideshows	16
troubleshooting	27
USB	14
position	
connectors	9
position	8
preference	
audio	20
auto standby	22
change password	21
disc menu	21
display panel	23
menu language	21
screen saver	22
sleep timer	22
subtitle	21
product specifications	25

R

radio	
control buttons	17
FM antenna	9
listen to radio	17
specifications	25
tune stations	17
ratings	22
recycling	4
region codes	25
remote control	
batteries	26
overview	5
repeat	16

S

safety	
disposal	4
use of the product	3
screen saver	22

settings	
audio	20
auto standby	22
default	23
disc language	21
HDMI audio	20
HDMI video	20
HDMI-CEC	18
menu language	21
parental rating	22
password	21
picture	20
power	22
restore	23
screen saver	22
sleep timer	22
subtitle language	21
video	20
setup speakers	
manually	9
sleep timer	22
slideshows	
musical	16
picture	16
software	
check current version	24
update	24
sound	
predefined sound mode	13
surround sound	13
synchronize picture and sound	14
troubleshooting	27
sound mode	13
speakers	
connect	9
manual setup	9
position	8
setup	9
specifications	26
surround sound	13
subtitle	
character set	15
language	21
subwoofer	
specifications	26
synchronize picture and sound	14
system audio control	18

T	
time search	16
titles	16
trademarks	29
troubleshooting	
connection	27
main unit	27
picture	27
play	27
sound	27

U	
update software	
check current version	24
update	24
USB	
format	25
USB storage device	
options	16
play	15
specifications	25

V	
video	
picture settings	20
synchronize picture and sound	14
VOD code for DivX	15
video formats	25
video options	16
VOD code for DivX	15



Specifications are subject to change without notice
© 2012 Koninklijke Philips Electronics N.V.
All rights reserved.

HTD3500_12_UM_V1.0

