

PHILIPS

TV Wall Mount

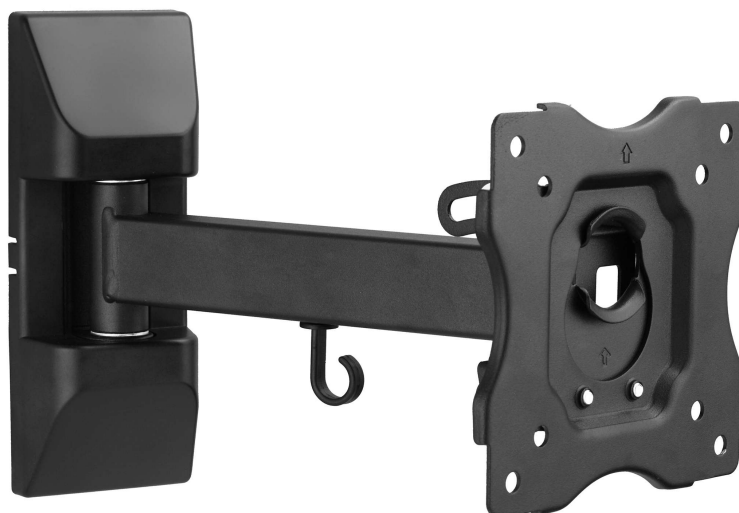
Universal

Articulating

LCD/LED/OLED/QLED compatible

Flat and curved TV compatible

SQM9112



Universal articulating wall mount

for TV sizes between 13" and 28"

Designed to fit most brands of TV with a focus on safety and ease of use. Easy installation kit includes the necessary hardware. Slim design that's still strong, with a weight capacity up to 11 kg (24 lbs). Supports full 180-degree motion.

Easy installation

- Mounting hardware included
- Standard VESA mounting hole pattern
- Up to VESA 100 x 100 mounting
- Level correction
- TV cable management to hide cables for a neater look

Safely mount your TV

- Supports screen sizes between 13" to 28"

Highlights

Screen sizes 13" - 28"

The TV size can exceed the listed average TV size if the TV fits the specified maximum VESA pattern and weight that this wall mount can support.

Up to VESA 100 x 100 mounting

Up to VESA 100 x 100 mounting

Mounting hardware included

Includes all necessary screws, anchors and bolts for different types of walls, ensuring the right type of hardware is readily available for the particular type of wall the support is being mounted on.

Level correction

If the wall mount is slightly off-level after it is installed, it allows for level corrections to horizontally mount the TV.

Specifications

Outer Carton

Number of consumer packages: 2

GTIN: 1 48 95229 12513 8

Inner Carton

Number of consumer packages: 1

GTIN: 2 48 95229 12513 5

Packaging dimensions

Packaging type: Carton

Type of shelf placement: Laying

Number of products included: 1

EAN: 48 95229 12513 1

Accessories

Mounting material included

Dimensions

Wall-mount compatible: 100 x 100 mm, 75 x 75 mm

