

Registre seu produto e obtenha suporte em

www.philips.com/welcome

Immersive

Série 5000

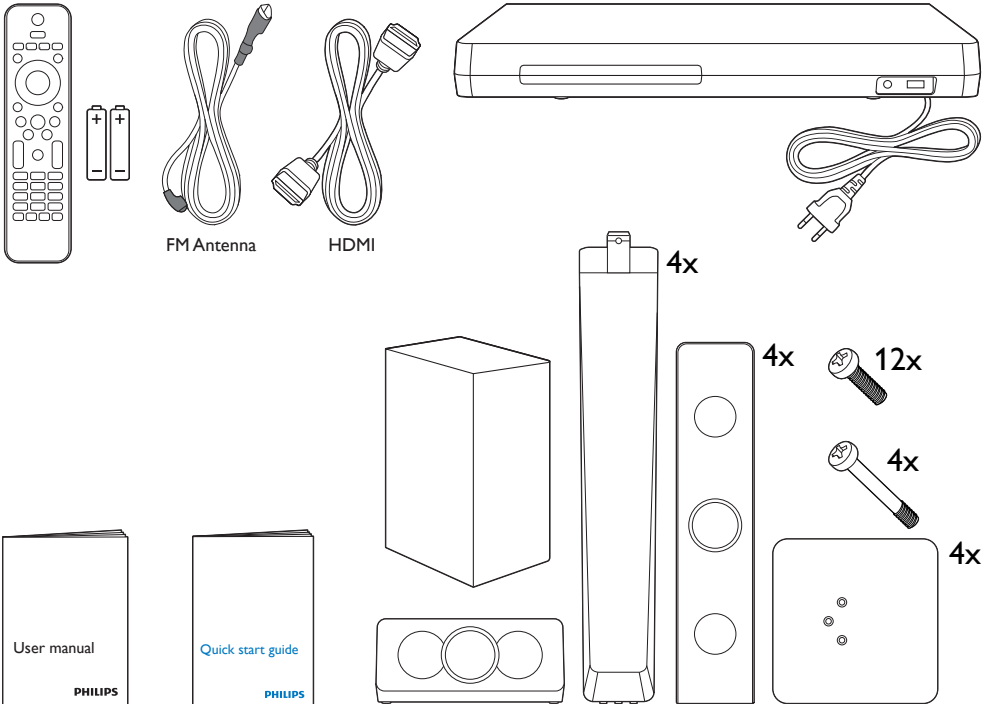


Instruções básicas de uso

PHILIPS



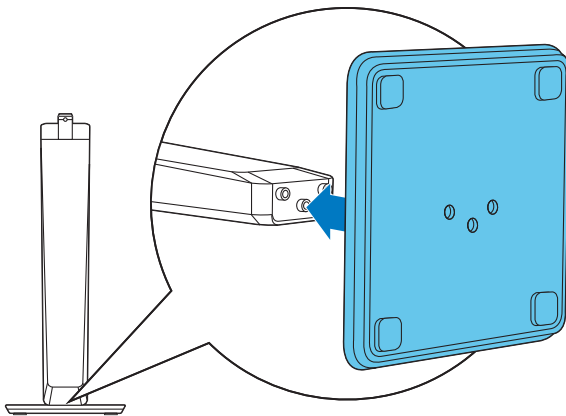
PT Antes de usar o produto, leia todas as informações de segurança em anexo.



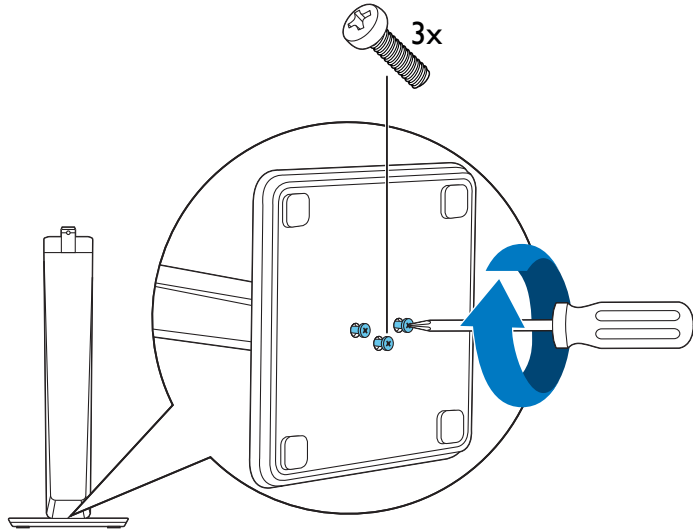
1

PT Montar as caixas acústicas

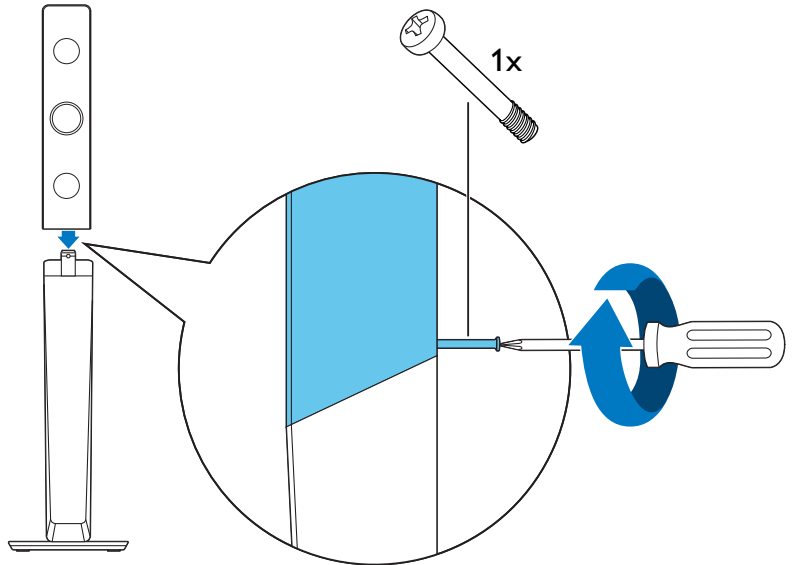
1



2

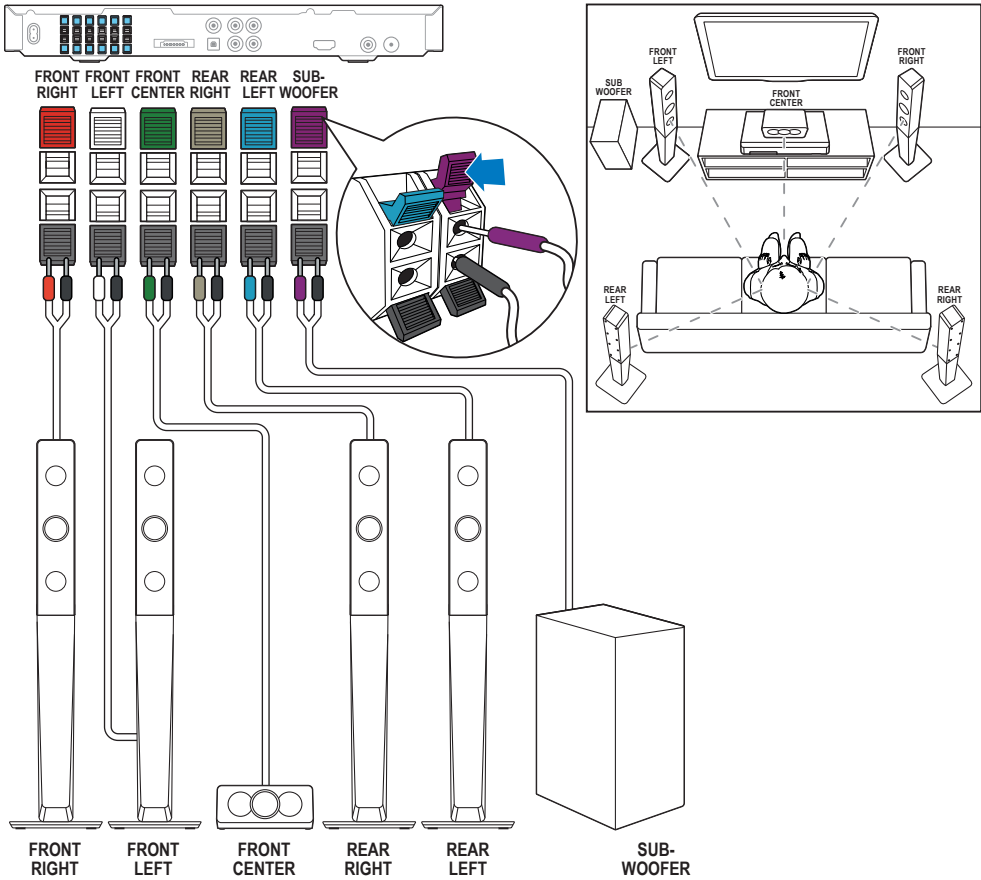


3



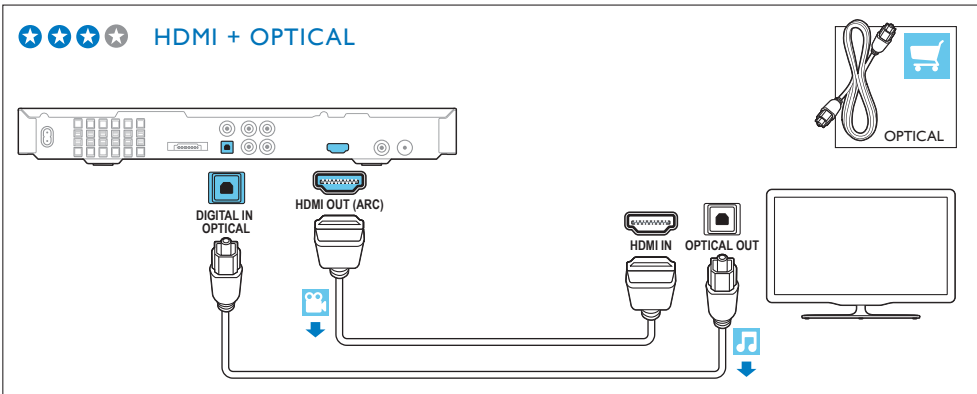
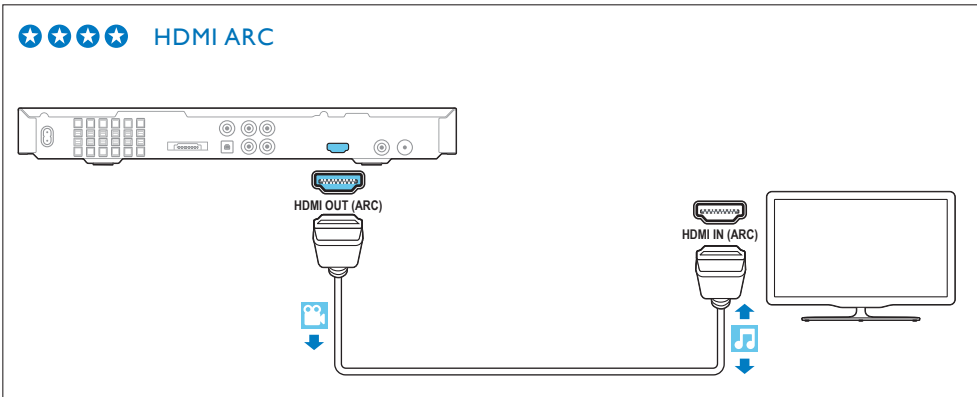
2

PT Conectar o Home Theater

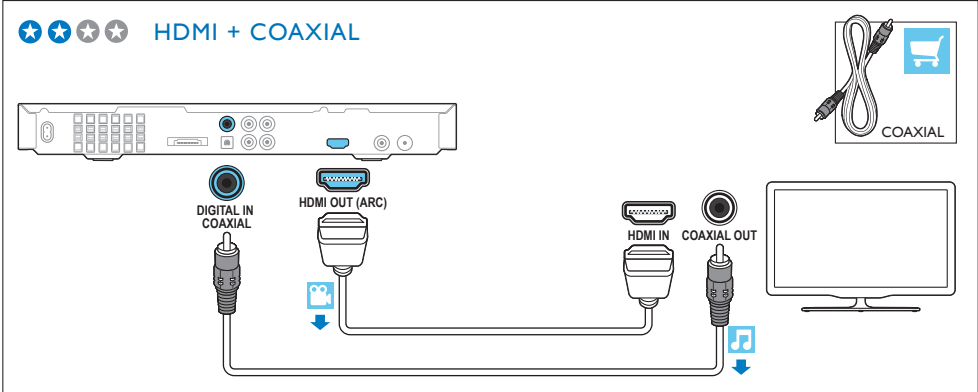


3

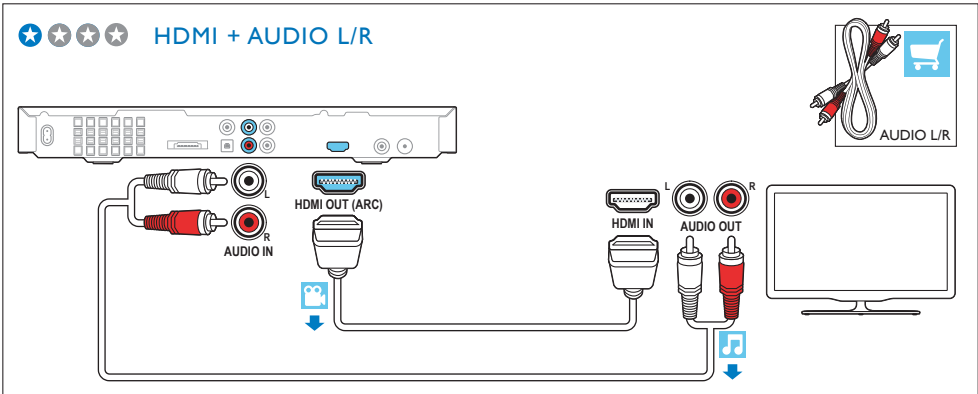
PT Conecte à TV de uma destas maneiras



★ ★ ★ ★ HDMI + COAXIAL



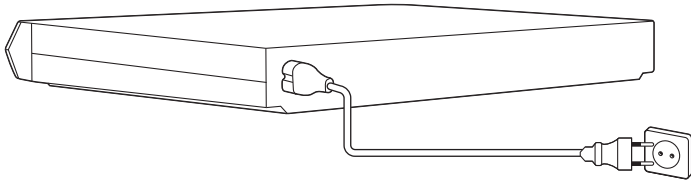
★ ★ ★ ★ HDMI + AUDIO L/R



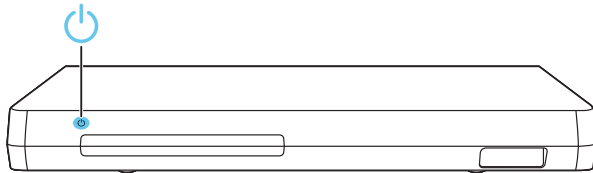
4

PT Ligar o Home Theater

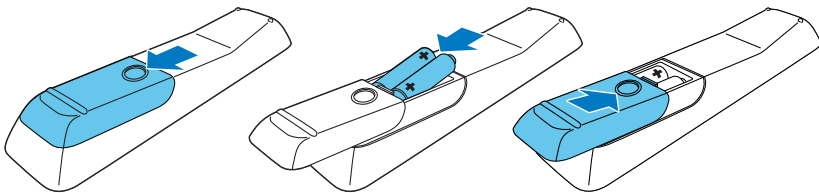
1



2

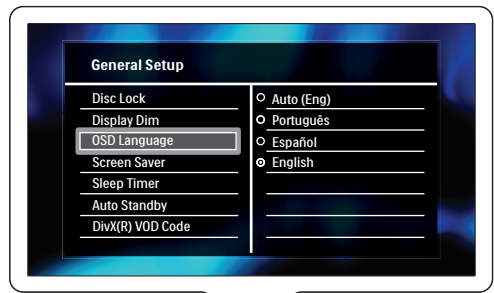
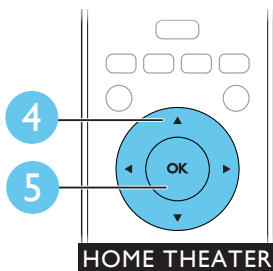
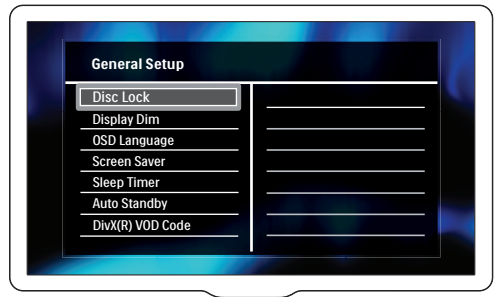
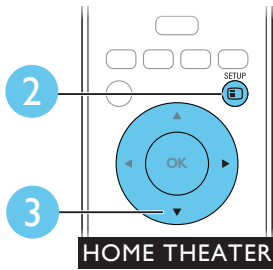
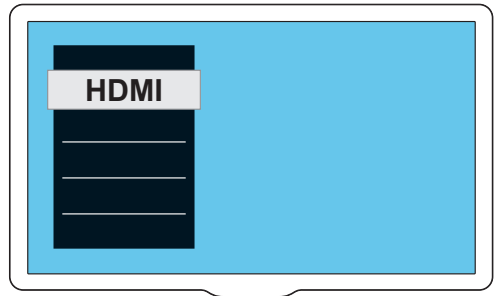
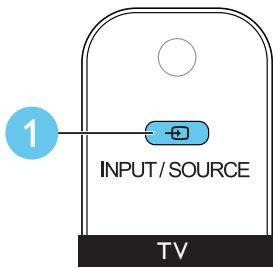


3



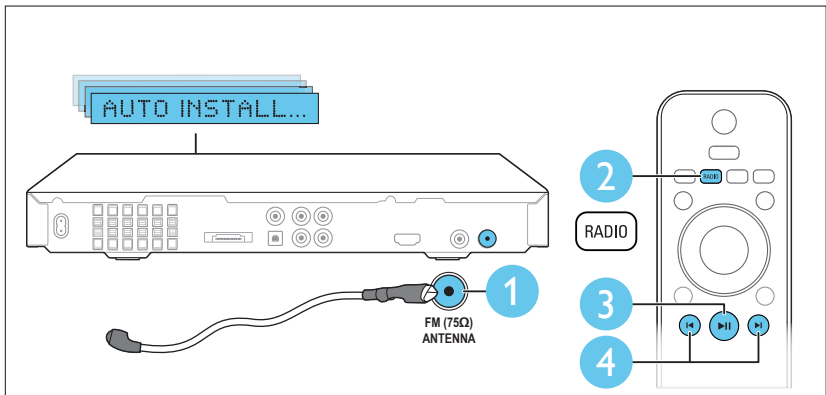
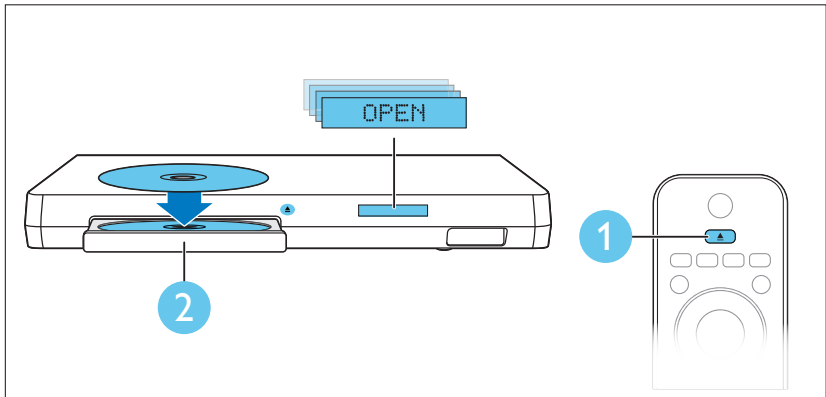
5

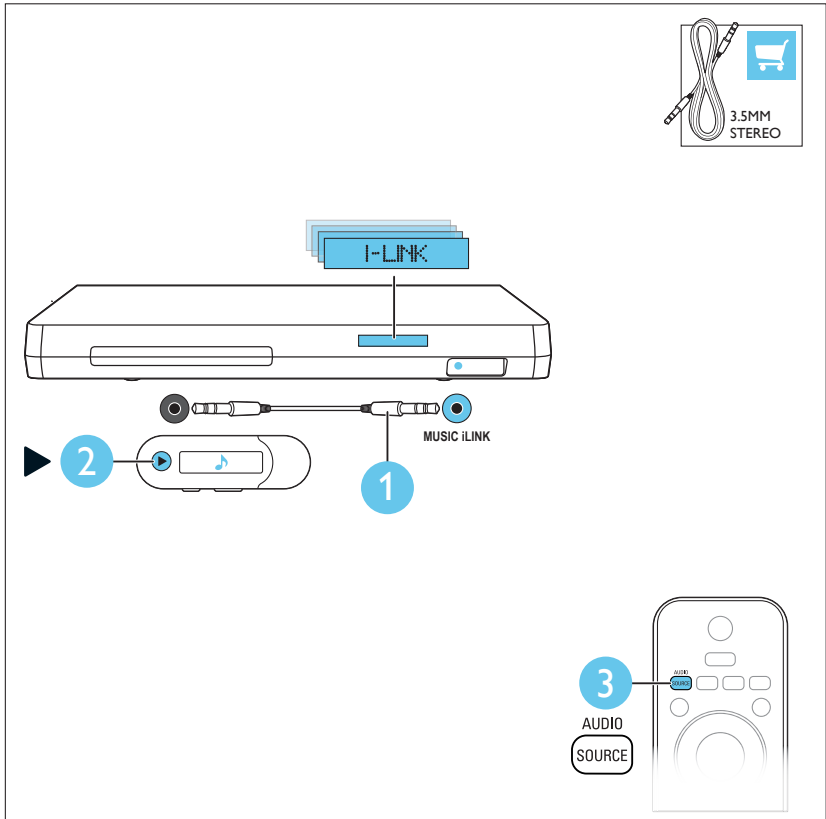
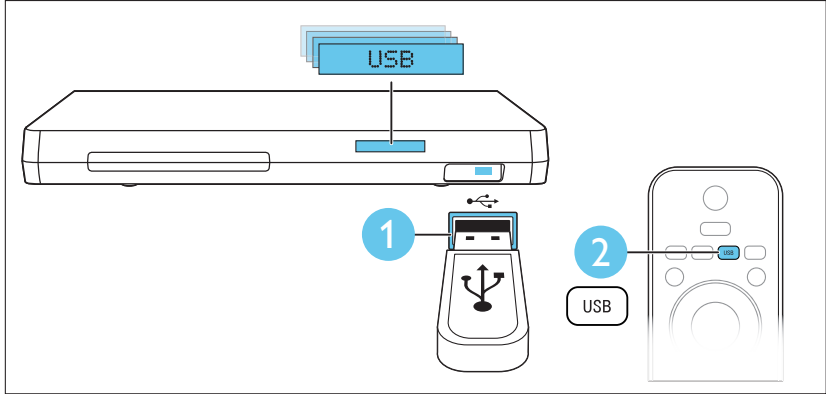
PT Fazer a configuração inicial



6

PT Usar o Home Theater







PT Para obter mais informações sobre o uso deste produto, visite o site www.philips.com/support



www.philips.com/support



Non-contractual images. / Images non contractuelles. /
Außervertragliche Bilder.

All registered and unregistered trademarks are property
of their respective owners.

Specifications are subject to change without notice
Trademarks are the property of Koninklijke Philips Electronics
N.V. or their respective owners
2012 © Koninklijke Philips Electronics N.V. All rights reserved
www.philips.com
sgsn_1205/78_v1

Evite o uso prolongado do aparelho
com volume superior a 85 decibéis, pois
isto poderá prejudicar a sua audição.
Potência total de saída de
800W RMS (+/- 0.5dB, 10% THD)



Be responsible
Respect copyrights

