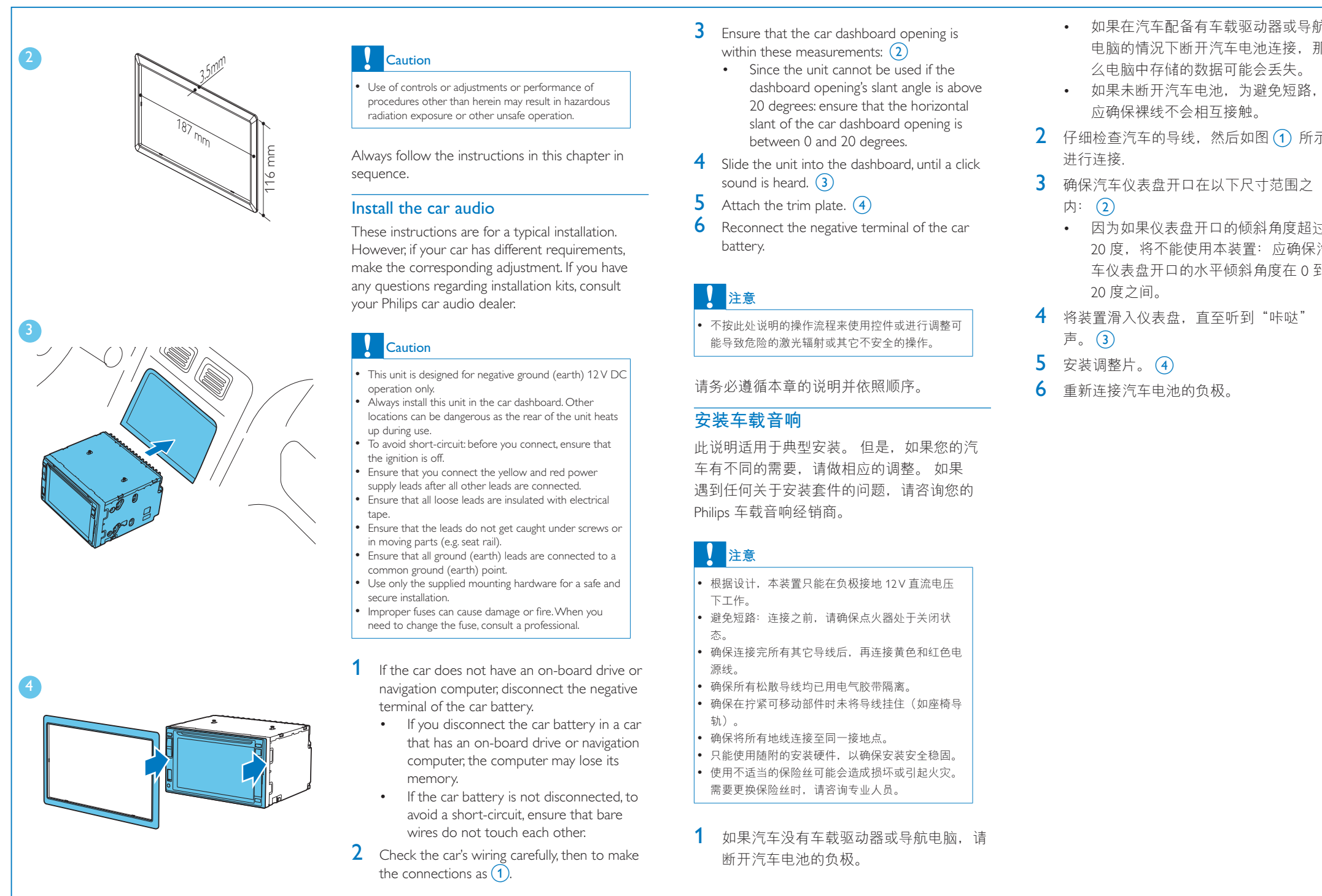
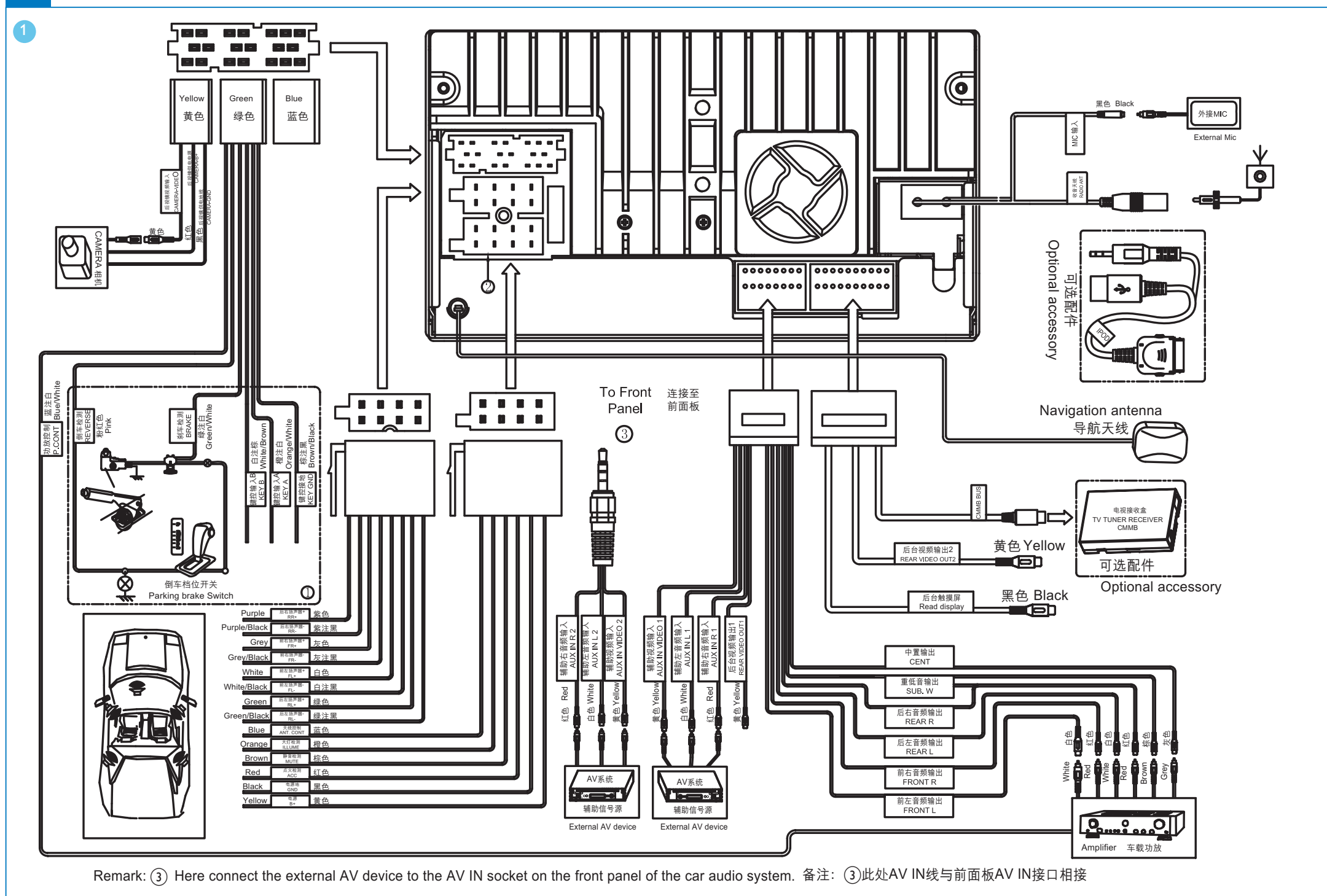


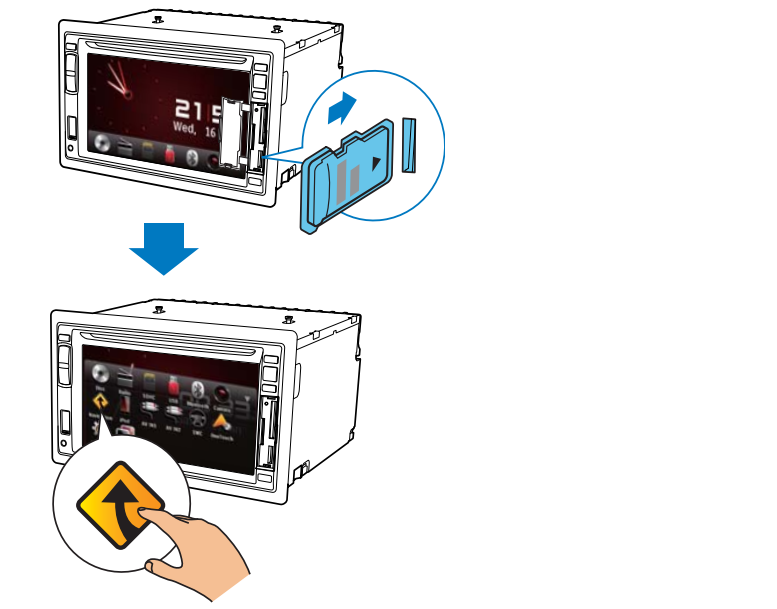
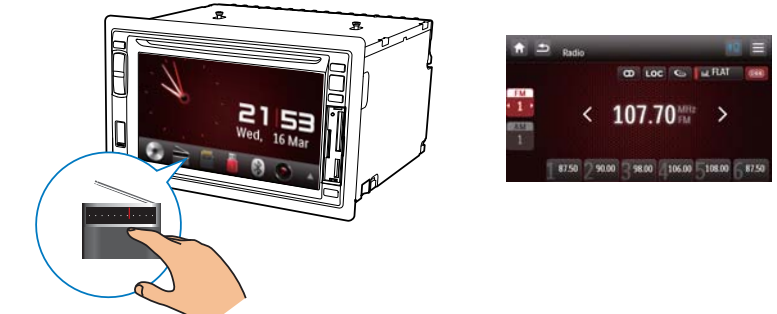
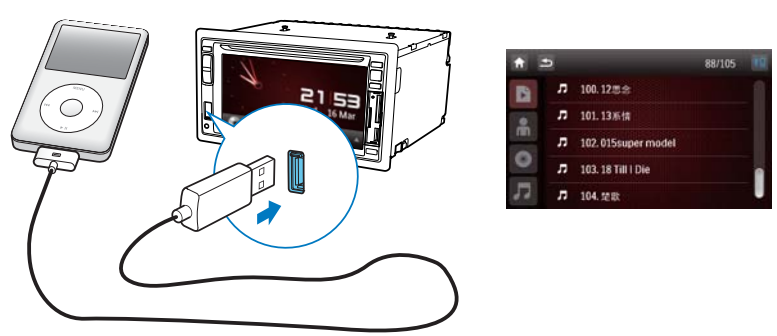
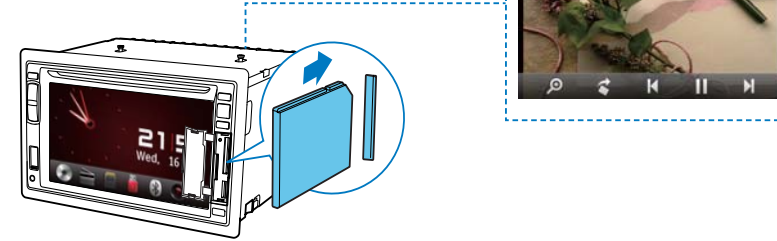
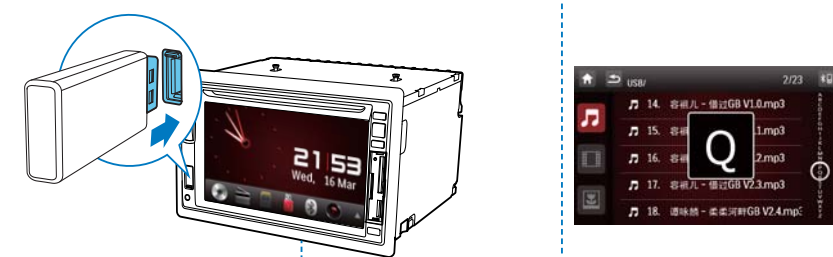
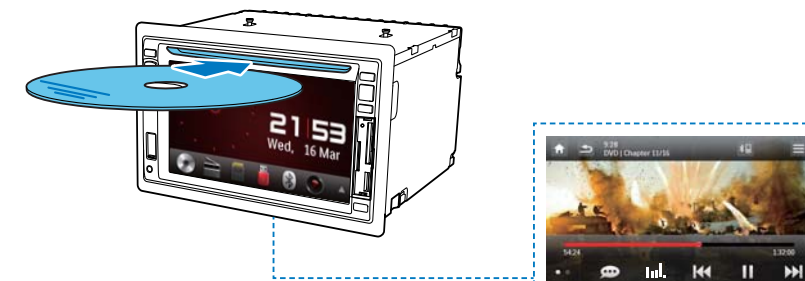
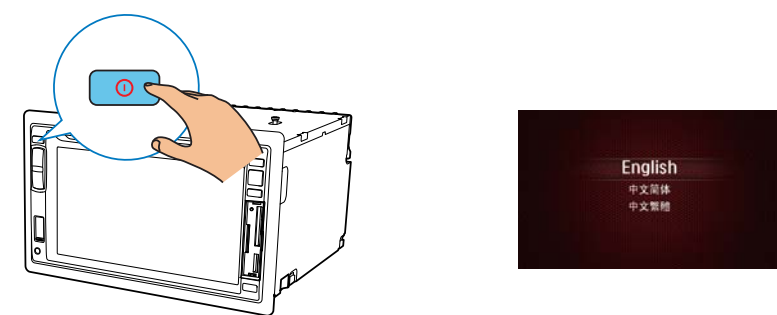
Quick Start Guide 快速使用指南

- 1 Install 安装
- 2 Enjoy 使用



1 Install 安装





Pair the Bluetooth-enabled devices

- 1 Turn on the Bluetooth function on the device.
- 2 Search for Bluetooth device with the device.
- 3 Select "CID2780" in the pairing list.
- 4 Enter default password "0000".
↳ if pairing succeeds, phone call record is displayed.



Make a call

- 1 Pair the phone with the unit.
- 2 Tap to display the home menu.
- 3 Tap .
↳ List of available Bluetooth devices is displayed.
- 4 Tap on the name of your mobile phone.
↳ The Bluetooth menu is displayed.
- 5 Tap , , or to select a phone number.
- 6 Tap on a phone number from the list.
↳ Phone calling starts.
- 7 If connection failed, tap to re-dial .
- 8 When conversation ends, tap .

配对蓝牙设备

- 1 打开设备的蓝牙功能。
- 2 用本设备搜索蓝牙设备。
- 3 选择配对列表中的“CID2780”。
- 4 输入默认密码“0000”。
↳ 如果配对成功。将显示通话记录。

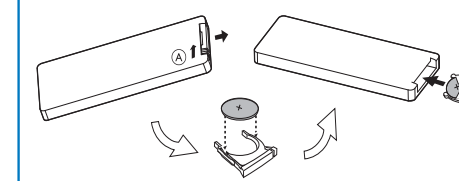


打电话

- 1 将电话与本装置配对。
- 2 按 显示主菜单。
- 3 轻击 。
↳ 将显示可用蓝牙设备的列表。
- 4 轻击手机的名称。
↳ 将显示蓝牙菜单。
- 5 轻击 , 或 以选择电话号码。
- 6 轻击列表中的电话号码。
↳ 电话呼叫开始。
- 7 如果连接失败，请轻击 重复拨打。
- 8 通话结束时，轻击 .

Install remote control battery

- 1 Open the battery compartment.
- 2 Insert one CR2025 battery with correct polarity (+/-) as indicated.
- 3 Close the battery compartment.



安装遥控器电池

- 1 打开电池仓。
- 2 按照指示，以正确的极性 (+/-) 插入一节 CR2025 电池。
- 3 闭合电池仓。

