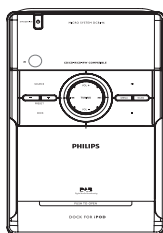
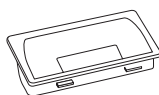


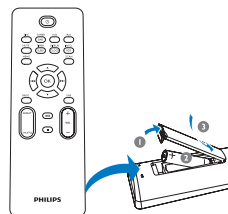
Quick Start Guide



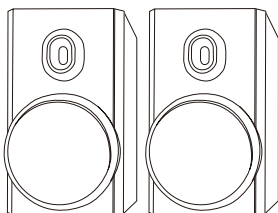
Main unit



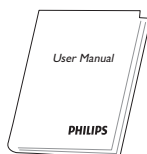
4 x iPod adaptors



Remote Control



2 x Loudspeaker boxes

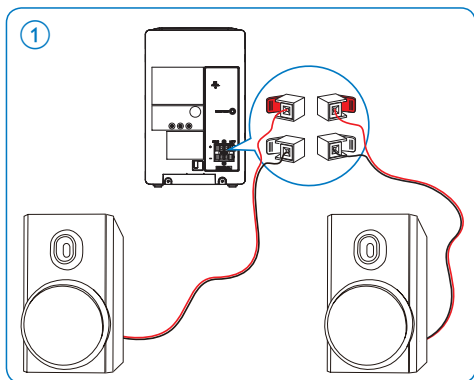


User Manual

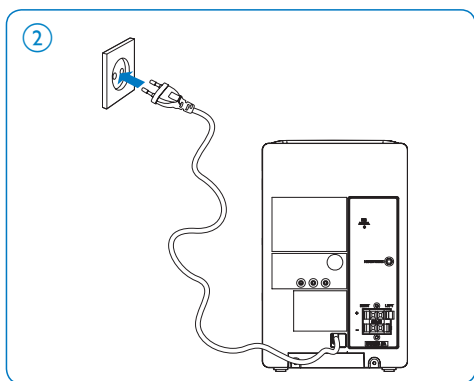


Quick Start Guide

A Connect

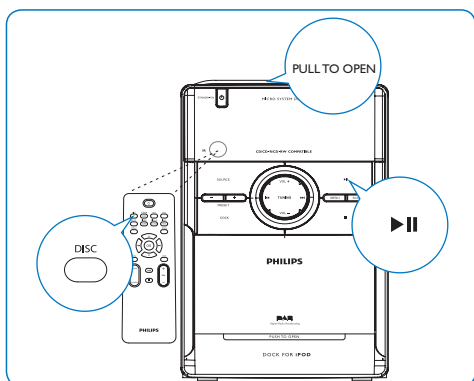


- 1 For the right speaker, find the sockets on the main unit marked 'RIGHT'.
- 2 Insert the red wire to the red (+) socket.
- 3 Insert the black wire into the black (-) socket.
- 4 For the left speaker, find the sockets on the main unit marked 'LEFT'.
- 5 Repeat steps 2-3.



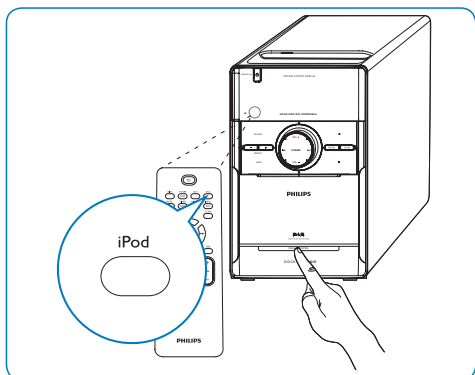
- 1 Connect the power adaptor to the wall outlet.

B Play a disc



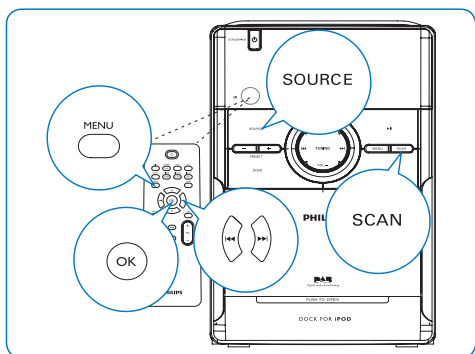
- 1 Press **DISC** to select the disc source.
- 2 Lift the CD door on the top of the system to open the CD compartment.
- 3 Insert a disc with the printed side facing up and press down the CD door to close the CD compartment.
- 4 Press ▶|| to start playback.

C Play from iPod



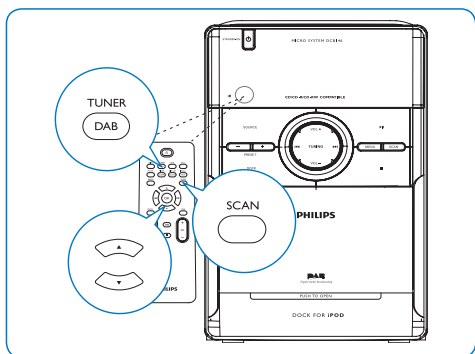
- 1 Select a dock adaptor (supplied) that matches your iPod type.
- 2 Press **PUSH TO OPEN** to open the dock on the main unit.
- 3 Snap the suitable dock adaptor into the dock on the main unit.
- 4 Plug your iPod into the dock adaptor.
- 5 Press **iPod** on the remote control to select iPod source.
↳ The connected iPod plays automatically.

D Tune to DAB stations



- 1 Press **SOURCE** to select DAB to start an automatic search of available DAB stations.
- 2 Press **◀▶** to change the DAB stations.
- 3 Press **OK** to confirm a selection.
- 4 To perform a scan, press briefly **SCAN**.
- 5 To access setup options, press **MENU** then use the navigation control buttons to select.

E Program and tune to FM stations



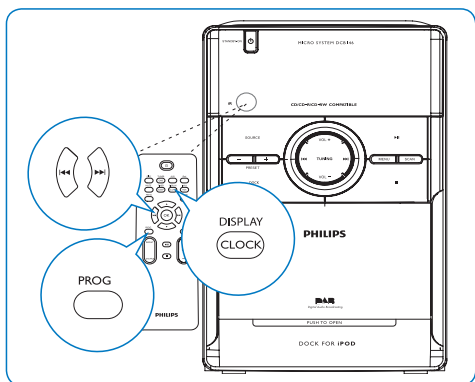
- 1 Select **TUNER** source.
- 2 Press **SCAN** for more than two seconds to program all available stations (FM only).
- 3 Press **▼/▲** to select the desired preset station.



Tip

- Detailed playback features and additional functions are described in the accompanied user manual.

F Set clock



- 1 Press and hold **CLOCK/DISPLAY** on the remote control for 2 seconds.
- 2 Press **PROG** repeatedly to select 12 hour or 24 hour format.
- 3 Press **CLOCK/DISPLAY** to confirm the selection.
- 4 Press **◀◀▶▶** to set the hour.
- 5 Press **CLOCK/DISPLAY** to confirm the hour setting.
- 6 Press **◀◀▶▶** to set the minute.
- 7 Press **CLOCK/DISPLAY** to confirm the setting.



© 2010 Koninklijke Philips Electronics N.V.
All rights reserved.

