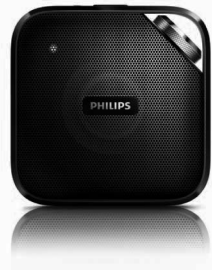


Always there to help you
Register your product and get support at
www.philips.com/welcome



BT2500



CN 简明用户手册

EN Short User Manual

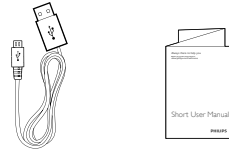
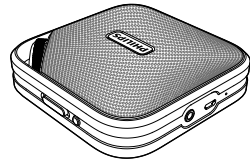
PHILIPS



Specifications are subject to change without notice
2014 © WOOX Innovations Limited. All rights reserved. Philips
and the Philips' Shield Emblem are registered trademarks of
Koninklijke Philips N.V. and are used by WOOX Innovations
Limited under license from Koninklijke Philips N.V.

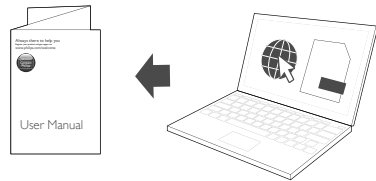


BT2500_93_Short User Manual_V1.0



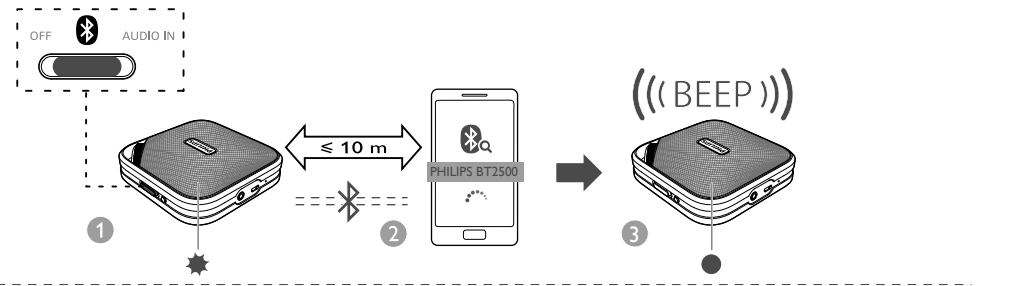
使用产品之前，请先阅读所有随附的安全信息。

Before using your product, read all accompanying safety information.



要下载完整用户手册，请访问 www.philips.com/support。

To download the full user manual, visit
www.philips.com/support.



蓝牙指示灯
顶部的 LED 指示灯指示蓝牙连接的状态。

按钮	蓝牙连接
呈蓝色闪烁	正在连接或等待连接
呈蓝色持续亮起	已连接

播放音频
播放音频和控制蓝牙设备的内容播放。
打电话

按钮	功能
	按下可接听来电。
	按下可结束当前通话。
	按住可拒接来电。
	通话时，按住可将通话转接至手机。
	通话时有另一来电时，您可以
	• 按下可结束当前通话并接听另一来电。
	• 按两次可拒接另一来电。
	• 按住 2 秒钟可保持当前通话并接听另一来电。

注意：连接其它设备之前，断开当前设备与扬声器的连接。您可以禁用当前设备的蓝牙功能，或在其未通话时按住该扬声器上的



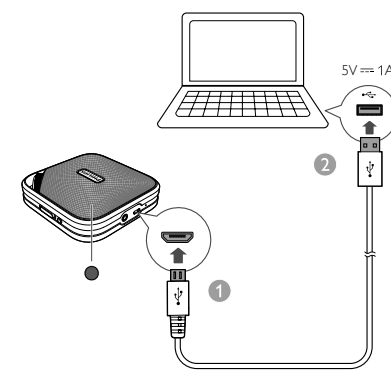
Bluetooth indicator
The LED indicator on the top indicates the status of Bluetooth connection.

Indicator	Bluetooth connection
Blinking blue	Connecting or waiting for connection
Solid blue	Connected

Play audio
Play audio and control play on your Bluetooth device.
Make a call

Button	Functions
	Press to answer an incoming call.
	Press to end the current call.
	Press and hold to reject an incoming call.
	During a call, press and hold to transfer the phone call to your mobile.
	When there is another incoming call during a call, you can
	• press to end the current call and answer the another call.
	• press twice to reject the another call.
	• press and hold for two seconds to hang on the current call and answer the another call.

Note: Before connecting another device, disconnect the current device from the speaker. You can disable the Bluetooth function on the current device, or press and hold on this speaker when its not during a call.

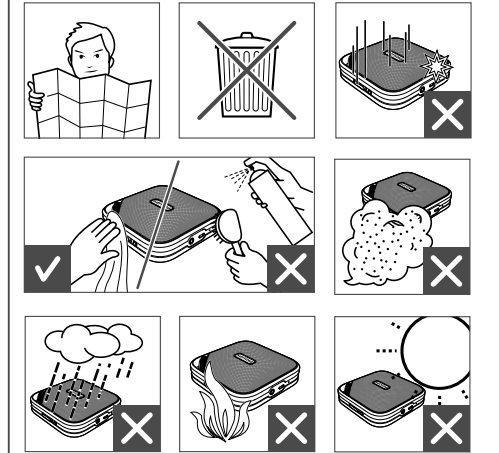
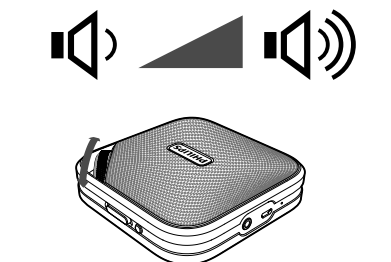
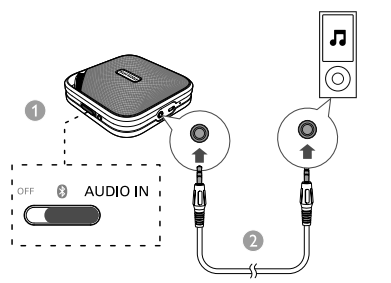


注意：1) 使用之前，为内置电池充满电。2) 使用后，将滑块切换至 **OFF** 可关闭扬声器。
电量不足指示
顶部的 LED 指示灯可指示电池状态。

指示灯	电池
呈红色持续亮起	正在充电
关	充满电
蓝牙模式下呈红色闪烁	电量不足

Note: 1) Before use, fully charge the built-in battery. **2)** After use, switch the slider to **OFF** to turn off the speaker.
Battery indicator
The LED indicator on the top indicates the battery status.

Indicator	Battery
Solid red	Under charging
Off	Fully charged
Blinking red in Bluetooth mode	Low power





简体中文

1 安全

- 不要在靠近水的地方使用本装置。
 - 不要放置在任何热源附近，如散热器、蓄热器、炉具或其它发热设备（包括功放器）。
 - 仅使用制造商指定的附件/配件。
 - 切勿将产品暴露在漏水或溅水环境下。
 - 不要将任何危险源放在本产品上（例如装有液体的物体、点燃的蜡烛）。
 - 不可将电池置于高温环境，如阳光直射处、明火或类似环境。
 - 电池安装不正确会有爆炸危险。 只能用相同或相当的型号更换。
 - 电池含有化学物质，因此应正确处理。
- 小心: **1)** 拆卸内置电池将使保修失效，并可能毁坏产品。 **2)** 这些维修说明仅限由合格的维修人员使用。 为降低触电风险，除非您有资格，否则不得执行操作说明内容以外的任何维修。 **3)** 务必让专业人员拆卸产品中的内置电池。
注意: 充电电池的充电次数有限。 电池使用寿命和充电次数会因使用情况和设置而有所不同。
- 小心: **1)** 切勿拆下本产品的外壳。 **2)** 切勿润滑本产品的任何部件。 **3)** 切勿将本装置置于其他电器设备上面。 **4)** 应让本产品远离阳光直射、明火或高温。

2 注意

如果用户未经 WOOX Innovations 的明确许可而擅自对此设备进行更改或修改，则可能导致其无权操作此设备。

旧产品和电池的处理

本产品采用可回收利用的高性能材料和组件制造而成。

切勿将本产品与其它生活垃圾一起处理。 请自行了解当地关于分类收集电子、电气产品及电池的规定。 正确弃置这些产品有助于避免对环境和人体健康造成潜在的负面影响。

本产品所含的电池不能与一般的生活垃圾一同弃置。

请自行了解当地关于分类收集电池的规定。 正确弃置电池有助于避免对环境和人类健康造成潜在的负面影响。

关于您所在地区回收中心的更多信息，请访问 www.recycle.philips.com。

环境信息

已省去所有不必要的包装。 我们努力使包装易于分为三种材料：纸板（盒）、泡沫塑料（缓冲物）和聚乙烯（袋、保护性泡沫片）。

您的系统包含可回收利用的材料（如果由专业公司拆卸）。 请遵守当地有关包装材料、废电池和旧设备的处理的规定。

商标声明

蓝牙® 字样和徽标均为 Bluetooth SIG, Inc. 所有， WOOX Innovations 对这些字样和徽标的任何使用均属合法。

3 产品信息

一般信息

电源（通过 USB 插孔）	5 伏 == 1 安
内置电池	锂电池（750 毫安时， 3.7 伏）
尺寸 - 主装置（宽 x 高 x 深）	101 X 34 X 101 毫米
重量 - 主装置	0.22 千克

蓝牙

蓝牙规格	V3.0
支持的模式	HFP、HSP、A2DP
范围	10 米（开阔空间）

功放器

额定输出功率	3 瓦 RMS
信噪比	> 60 dBA

AUDIO IN（音频输入） 650 毫伏 RMS， 22 千欧

English

1 Safety

- Do not use this apparatus near water.
- Do not place near any heat sources such as radiators, heat registers, stoves, or other apparatus (including amplifiers) that produce heat.
- Only use attachments/accessories specified by the manufacturer.

- The product shall not be exposed to dripping or splashing.
- Do not place any sources of danger on the product (e.g. liquid filled objects, lighted candles).
- Battery shall not be exposed to excessive heat such as sunshine, fire or the like.
- Danger of explosion if battery is incorrectly replaced. Replace only with the same or equivalent type.
- Batteries contain chemical substances, so they should be disposed of properly.

Caution: 1) Removal of the built-in battery invalidates the warranty and may destroy the product. **2)** These servicing instructions are for use by qualified service personnel only. To reduce the risk of electric shock do not perform any servicing other than that contained in the operating instructions unless you are qualified to do so. **3)** Always bring your product to a professional to remove the built-in battery.

Note: Rechargeable batteries have a limited number of charge cycles. Battery life and number of charge cycles vary by use and settings.

Warning: 1) Never remove the casing of this product. **2)** Never lubricate any part of this product. **3)** Never place this product on other electrical equipment. **4)** Keep this product away from direct sunlight, naked flames or heat.

2 Notice

Any changes or modifications made to this device that are not expressly approved by WOOX Innovations may void the user's authority to operate the equipment.

Disposal of your old product and batteries

Your product is designed and manufactured with high quality materials and components, which can be recycled and reused.

Never dispose of your product with other household waste. Please inform yourself about the local rules on the separate collection of electrical and electronic products and batteries. The correct disposal of these products helps prevent potentially negative consequences on the environment and human health.

Your product contains batteries, which cannot be disposed of with normal household waste. Please inform yourself about the local rules on separate collection of batteries. The correct disposal of batteries helps prevent potentially negative

consequences on the environment and human health.

Please visit www.recycle.philips.com for additional information on a recycling center in your area.

Environmental information

All unnecessary packaging has been omitted. We have tried to make the packaging easy to separate into three materials: cardboard (box), polystyrene foam (buffer) and polyethylene (bags, protective foam sheet.)

Your system consists of materials which can be recycled and reused if disassembled by a specialized company. Please observe the local regulations regarding the disposal of packaging materials, exhausted batteries and old equipment.

Trademark notice

The Bluetooth® word mark and logos are registered trademarks owned by Bluetooth SIG, Inc. and any use of such marks by WOOX Innovations is under license.

3 Product information

General information

Power Supply (through USB socket)	5 V == 1 A
Built-in Battery	Lithium battery (750 mAh, 3.7 V)
Dimensions - Main Unit (W x H x D)	101 X 34 X 101 mm
Weight - Main Unit	0.22 kg

Bluetooth

Bluetooth specification	V3.0
Supported profiles	HFP, HSP, A2DP
Range	10 m (Free space)

Amplifier

Rated Output Power	3 W RMS
Signal to Noise Ratio	> 60 dBA
AUDIO IN	650 mV RMS, 22 kOhm




部件名称 Name of the Parts	有毒有害物质或元素 Hazardous/toxic Substance					
	铅 (Pb, Lead)	汞 (Hg, Mercury)	镉 (Cd, cadmium)	六价铬(Chromium 6+)	多溴联苯 (PBB)	多溴二苯醚 (PBDE)
Housing 外壳	○	○	○	○	○	○
Loudspeakers 喇叭单元	○	○	○	○	○	○
PWBs 电路板组件	x	○	○	○	○	○
Accessories (cables) 附件（连接线）	x	○	○	○	○	○

○：表示该有毒有害物质在该部件所有均质材料中的含量均在SJ/T11363 - 2006 标准规定的限量要求以下。
○: Indicates that this toxic or hazardous substance contained in all of the homogeneous materials for this part is below the limit requirement in SJ/T11363 – 2006.

x：表示该有毒有害物质至少在该部件的某一均质材料中的含量超出SJ/T11363 – 2006 标准规定的限量要求。

X: Indicates that this toxic or hazardous substance contained in at least one of the homogeneous materials used for this part is above the limit requirement in SJ/T11363 - 2006.

 环保使用期限 Environmental Protection Use Period

This logo refers to the period (10 years)

电子信息产品中含有的有毒有害物质或元素在正常使用的条件下不会发生外泄或突变，电子信息产品用户使用该电子信息产品不会对环境造成严重污染或对其人身、财产造成严重 损害的期限。

This logo refers to the period (10 years) during which the toxic or hazardous substances or elements contained in electronic information products will not leak or mutate so that the use of these [substances or elements] will not result in any severe environmental pollution, any bodily injury or damage to any assets.