

Troubleshooting

Problem

Solution

No sound

- Check if the audio cable is well connected
- Check if the power cable of the speakers is well connected
- Check if Pipe Speaker power is turned on.

No any response after pressed the buttons on the remote control

- Check if the power cord to the docking station is well connected
- Point the remote control to the docking station. The remote control is designed for the docking station instead of your iPod or GoGear.
- Check if the plastic protective sheet has been removed
- Check if the battery of the remote control is used up. If yes, replace it with a new one
- Some functions buttons do not applicable for GoGear (see **Enjoy** section for details.)

Sound can't be adjusted

- Check if the audio cable is properly connected: the audio cable should be connected to the black 3.5mm jack in the middle of the backside of the docking station.

Sound distorted

- Set EQ to 'Off' status:
 - a. Press MENU
 - b. Press ▲ or ▼ to select EQ and then press OK to confirm
 - c. Press ▲ or ▼ to select Off and then press OK to confirm

Sound isn't loud enough

- The voltage output level of your iPod decided the pipe speaker's maximum volume

Specifications

Sound

- Output Power : 2 x 15 Watts RMS
- Sound Enhancement : Class "D" Amplifier

Loudspeakers

- Main Speaker : 4 x Nano Speakers, front firing with adjustable angle.
- Subwoofer : 4 x Pipe Shaped Woofers

Dock Connectivity

- Audio Out : 3.5 mm (Cable Provided)
- AV Out : 3.5 mm for Audio/Video Out (Cable Optional)
- DC in for iPod : 3mm (Cable Provided)
- DC in for GoGear and iPod : 9 pins (Cable Optional)
- USB : Mini USB (Cable Optional)
- Remote Control : IR build-in

Remote Control

- 10 Keys Remote Control for iPod and GoGear Portable Player

Need help?

Online help: www.philips.com/support
Contact line: | 800 531 0039

Country	Helpdesk	Tariff / min	Keep ready
österreich	0820 901115	€0,20	Das Kaufdatum, Modellnummer und Seriennummer
Belgique	070 253 010	€0,17	La date d'achat la référence et le numéro de série du produit
Canada	1-800-661-6162 (Francophone) 1-888-744-5477 (English / Spanish)	Free	Date of Purchase, Model number and Serial number
Danmark	3525 8761	Local tariff	Forbrugeren's indkøbsdato, type/model-og serienummer
Suomi	09 2290 1908	Local tariff	Ostojäivä ja tarkka mallinnumero ja sarjanumero
France	08 9165 0006	€0,23	La date d'achat la référence et le numéro de série du produit
Deutschland	0180 5 007 532	€0,20	Das Kaufdatum, Modellnummer und Serial nummer
Ελλάδα	0 0800 3122 1223	Free	Την ημερομηνία αγοράς και τον ακριβή κωδικό μοντέλου και τον αριθμό σειράς του προϊόντος σας
Ireland	01 601 1161	Local tariff	Date of Purchase, Model number and Serial number
Italia	199 404 042	€0,21	La data di acquisto, numero di modello e numero di serie
Luxembourg	26 84 30 00	Local tariff	La data d'achat, la référence et le numéro de série du produit
Nederland	0900 0400 063	€0,20	De datum van aankoop, modelnummer en serienummer
Norge	2270 8250	Local tariff	Datoen da du kjøpte produktet & modellnummer & serienummeret
Portugal	2 1359 1440	Local tariff	A data de compra, número do modelo e número de série
España	902 888 785	€0,15	Fecha de compra e número del modelo e número de serie
Sveden	08 632 0016	Local tariff	Inköpsdatum, modellnummer och serienummer
Schweiz	02 2310 2116		Das Kaufdatum und Modellnummer und Seriennummer
UK	0906 1010 017	£0,15	Date of Purchase, Model number and Serial number
USA	1-888-744-5477	Free	Date of Purchase, Model number and Serial number



Be responsible
Respect copyrights

Specifications are subject to change without notice.
Trademarks are the property of Koninklijke Philips Electronics N.V. or their respective owners.
2006 © Koninklijke Philips Electronics N.V. All rights reserved.

www.philips.com



Docking Cradle Speaker System

waDC700

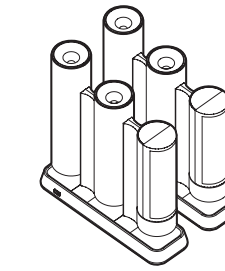
Quick Start guide

- Connect
- Install
- Enjoy

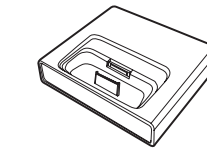


PHILIPS

What's in the box



Pipe speaker



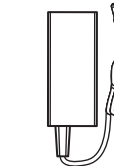
Docking cradle



8 x iPod dock adaptor



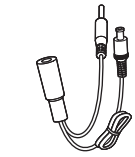
3 x GoGear dock adaptors



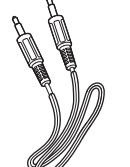
AC adapter



AC Power cord



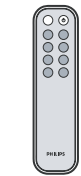
DC Cable



Audio Cable



Quick Start Guide



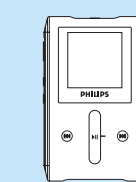
Remote control with one CR2032 battery pre-installed

What else you'll need



iPod

or



GoGear

Important!

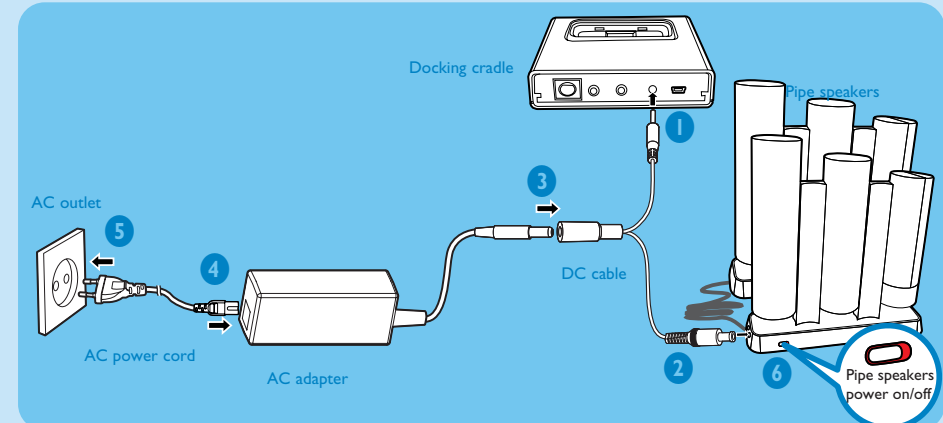
The docking cradle only supports the devices listed below. Do not try it on any other device!

- Apple iPod (iPod video, iPod nano, iPod Photo and iPod mini)
- Philips GoGear HDD players (Charge function optional)

A Connect

Connect AC power

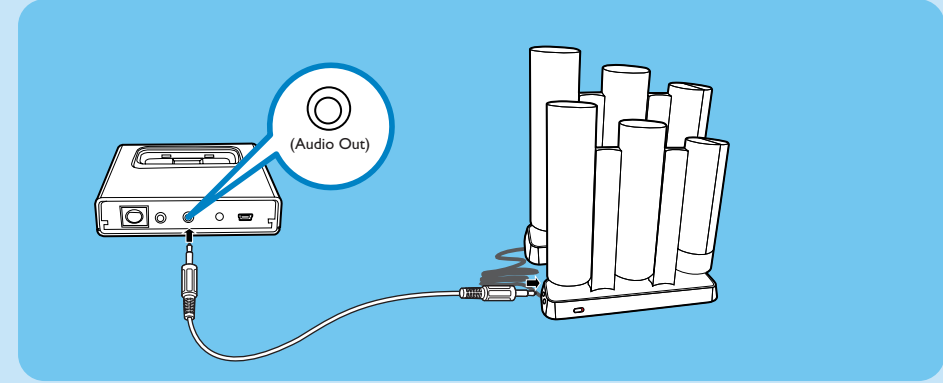
Connect the DC cable with the docking cradle and Pipe speaker first, then connect it with the AC adapter, and then connect the adapter with the AC power cord. Then plug the AC plug into a standard AC outlet.



CAUTION:
This product is powered by a specified power supply unit SA1460-240200 (I/P: AC 100-240 V~, 50/60 Hz, 1.5 A; O/P: DC 24V ---, 2.0 A).

Connect audio cable

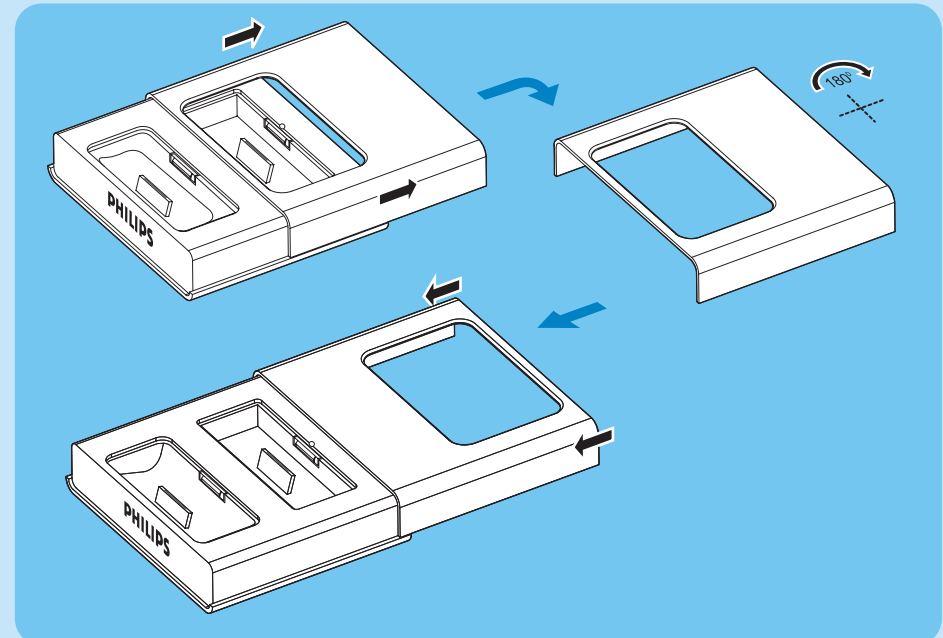
Plug one end of the audio cable to the black 3.5mm Audio Out jack, and the other end to the audio in jack on the pipe speaker.



B₁ Install

1 Change the docking cradle to match with your portable player

The docking cradle can support both iPod and GoGear. Follow steps below to change it into desired mode
 - Default position is prepared for iPod
 - Go to **B₂ Install** for iPod user.

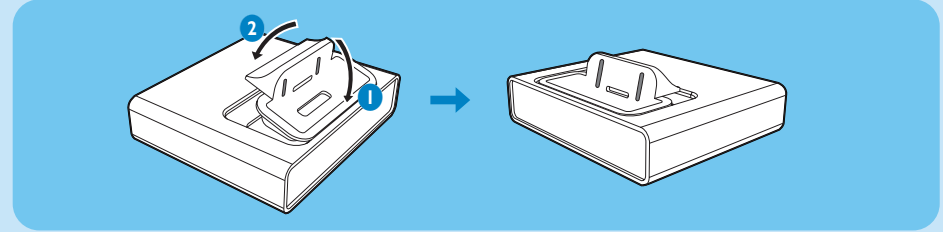


1. Slide the front cover horizontally in the direction shown above to open the front cover
2. Rotate the front cover in 180 degree
3. Slide the front cover back onto the docking cradle

B₂ Install

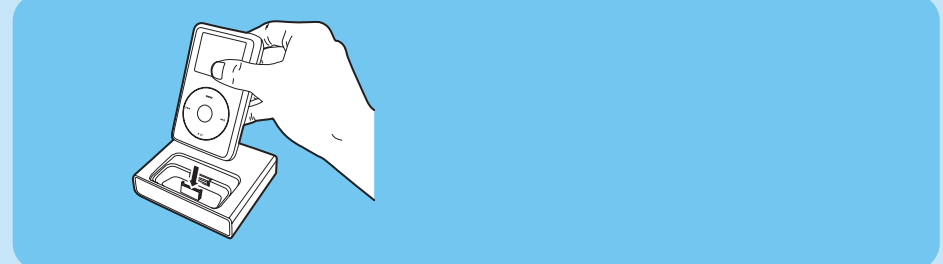
2 Install dock adaptor

Insert a dock adaptor that matches with your portable player (take iPod adaptor as example).



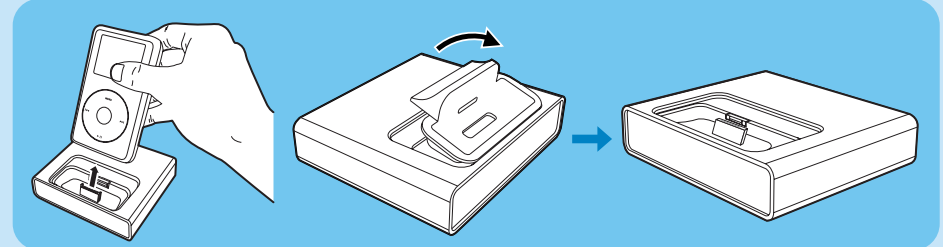
3 Install portable player

Plug your portable player into the cradle (take iPod as example).
 - Turn on the power of pipe speakers.



Un-install

To connect with a different iPod portable players, dismount the iPod first, then pop up the corresponding dock adaptor and replace with a new one of the matching type.



C Enjoy

You can use the controls on your iPod/GoGear to playing music. However, with the supplied remote control, you can enjoy music in a more easy and comfortable way.

Power on/off

Press **Power** to turn the iPod on or off

Note: This function isn't applicable for GoGear

Play

Press **Play** to start playing
 • While playing, press **Play** to stop playing temporarily. Press **Play** again to resume playing.

Adjust volume

Press **Volume +/-** to increase or reduce volume

Skip to the previous or next track

• Press **Left Arrow** to skip to the previous track
 • Press **Right Arrow** to skip to the next track

Searching for desired track

1. Press **MENU** button
 - The **MENU** screen is shown on the iPod
2. Press **Up Arrow** or **Down Arrow** to select desired folder, then press Select (**OK**) button to confirm the selection

Note: This function isn't applicable for GoGear

Charging iPod using the docking station

When the iPod is properly connected on the docking cradle and the power supply to the docking cradle is connected, battery charging start automatically.

Helpful hint:

• You can also use a USB cable (not supplied) to connect the docking cradle with your PC to charge your iPod or GoGear

