

# 3 Enjoy

Mini Hi-Fi System

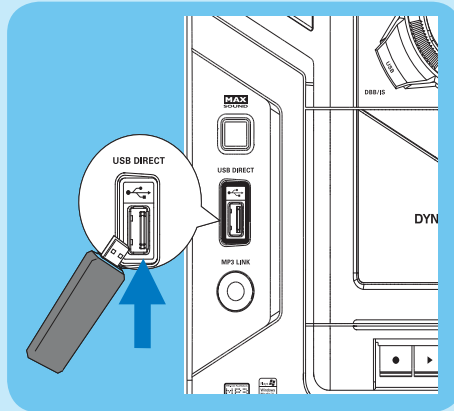
FWM387

## Play from USB

### Note

With the Hi-Fi system, you can use USB flash memory (USB 2.0 or USB1.1), USB flash players (USB 2.0 or USB1.1), memory cards (requires an additional card reader to work with this Hi-Fi system).

- 1 Insert the USB device's USB plug into the socket on the main unit.
- 2 Press **USB** to select USB.
- 3 Play the USB's audio files as you do with the albums/tracks on a CD.



## Listen to radio

- 1 Press **TUNER** (or **TUN** on the remote control) repeatedly to select FM or MW.
- 2 Press **PROG** for more than two seconds to program all available stations in order of waveband.
- 3 In tuner mode, press **ALBUM/PRESET +/-** (or **ABL/PRESET +/-** on the remote control) to select a preset number.

### Tip

Detailed features and additional functions are described in the user manual.



# Quick start guide

- 1 Connect
- 2 Setup
- 3 Enjoy



© Royal Philips Electronics N.V. 2009  
All rights reserved.

Specifications are subject to change without notice.  
Trademarks are the property of Koninklijke Philips  
Electronics N.V. or their respective owners.

Printed in China

PDCC-2009

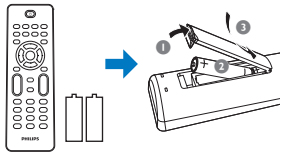


100% recycled paper  
100% papier recyclé

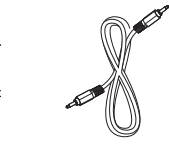
# PHILIPS

EN

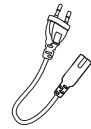
# What's in the box



Remote control with 2 AAA batteries



MP3 link cable



AC power cable



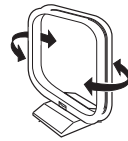
User manual



Quick start guide




FM wire antenna

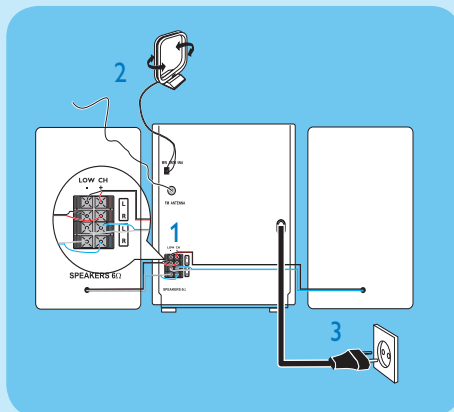


MW loop antenna

## 1 Connect

- 1 Connect speaker cables.
- 2 Connect the MW and FM antennas.
- 3 Connect the AC power cable to the main unit and the wall socket.

 **Tip**  
See the User Manual on how to connect other equipment to this system.



## 2 Setup

### Set clock

- 1 In the standby mode, press **DISPLAY/CLOCK** to activate the clock setting mode.  
↳ The 12 hour or 24 hour format is displayed.
- 2 Press **ALBUM/PRESET+/-** (**ALB/PRE-SET+/-** on the remote control) repeatedly to select 12 hour or 24 hour format.
- 3 Press **DISPLAY/CLOCK** to confirm.  
↳ The clock digits are displayed and begin to blink.
- 4 Press **ALBUM/PRESET+/-** (**ALB/PRE-SET+/-** on the remote control) to set the hour.

- 5 Press **◀/▶** (**◀/▶** on the remote control) to set the minute.
- 6 Press **DISPLAY/CLOCK** to confirm.



## 3 Enjoy

### Play disc

- 1 Press **DISC 1/2/3** to select the disc source.
- 2 Press **OPEN/CLOSE** on the main unit to open the disc compartment.
- 3 Load up to two discs on the disc trays, with the printed side facing up
  - To load the third disc, press **DISC CHANGE** on the main unit to rotate to the disc tray.
- 4 Press **OPEN/CLOSE** on the main unit to close the disc compartment.
- 5 Press **▶▶** to start play.
- 6 To stop play, press **■**.

