

Always there to help you

始终如一地为您提供帮助

Register your product and get support at

在以下网址注册您的产品并获得支持

www.philips.com/support

有疑问？
请联系飞利浦



AJT3300

Short User Manual

简明用户手册

PHILIPS



Specifications are subject to change without notice.
2014 © WOOX Innovations Limited. All rights reserved.
Philips and the Philips' Shield Emblem are registered trademarks
of Koninklijke Philips N.V. and are used by WOOX Innovations
Limited under license from Koninklijke Philips N.V.

AJT3300_93_Short User Manual_V2.0

EN

1 Important

Know these safety symbols



This 'bolt of lightning' indicates uninsulated material within your unit may cause an electrical shock. For the safety of everyone in your household, please do not remove product covering.

The 'exclamation point' calls attention to features for which you should read the enclosed literature closely to prevent operating and maintenance problems.

WARNING: To reduce the risk of fire or electric shock, this apparatus should not be exposed to rain or moisture and objects filled with liquids, such as vases, should not be placed on this apparatus.

CAUTION: To prevent electric shock, match wide blade of plug to wide slot, fully insert.

Warning

- Never remove the casing of this clock radio.
- Never lubricate any part of this clock radio.
- Never place this clock radio on other electrical equipment.
- Keep this clock radio away from direct sunlight, naked flames or heat.
- Make sure that you always have easy access to the power cord, plug or adaptor to disconnect the clock radio from the power.

- Make sure that there is enough free space around the product for ventilation.

Battery usage CAUTION – To prevent battery leakage which may result in bodily injury, property damage, or damage to the product:

- Install the batteries correctly, + and - as marked on the product.
- Do not mix batteries (old and new or carbon and alkaline, etc.).
- Remove the batteries when the product is not used for a long time.
- The batteries shall not be exposed to excessive heat such as sunshine, fire or the like.
- Use only power supplies listed in the user manual.
- The product shall not be exposed to dripping or splashing.
- Do not place any sources of danger on the product (e.g. liquid filled objects, lighted candles).
- Where the plug of the Direct Plug-in Adapter is used as the disconnect device, the disconnect device shall remain readily operable.

2 Notice

Any changes or modifications made to this device that are not expressly approved by WOOX Innovations may void the user's authority to operate the equipment.

Disposal of your old product

Your product is designed and manufactured with high quality materials and components, which can be recycled and reused. Do not throw away the product with the normal household waste at the end of its life, but hand it in at an official collection point or recycling. By doing this, you help to preserve the environment.

Environmental information

All unnecessary packaging has been omitted. We have tried to make the packaging easy to separate into three materials: cardboard (box), polystyrene foam (buffer) and polyethylene (bags, protective foam sheet). Your system consists of materials which can be recycled and reused if disassembled by a specialized company. Please observe the local regulations regarding the disposal of packaging materials, exhausted batteries and old equipment.

The Bluetooth® word mark and logos are registered trademarks owned by Bluetooth SIG, Inc. and any use of such marks by WOOX Innovations is under license.



Note

- The type plate is located on the bottom of the apparatus.

This is CLASS II apparatus with double insulation, and no protective earth provided.

ZH-CN

1 注意事项

了解这些安全标志

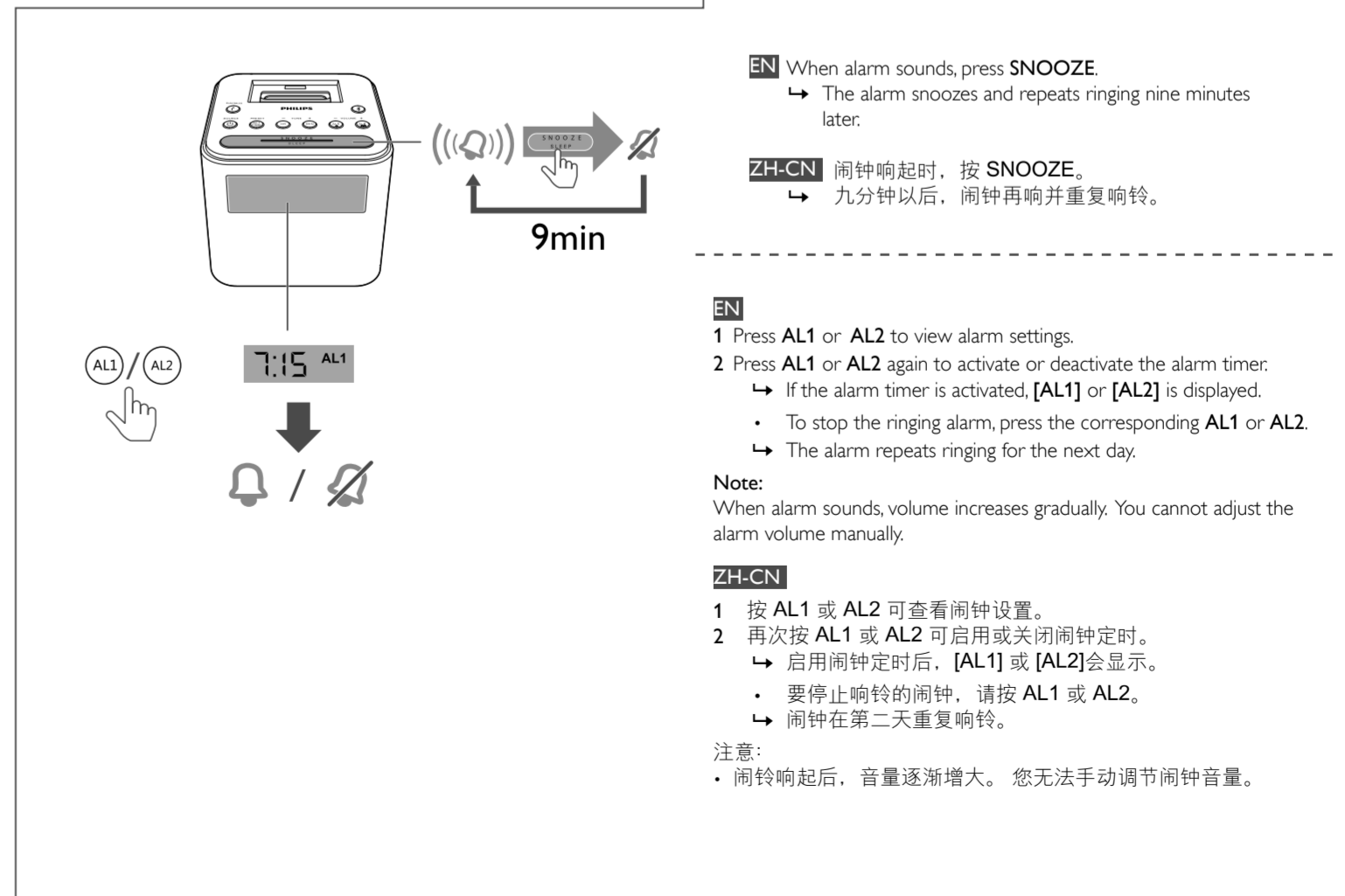
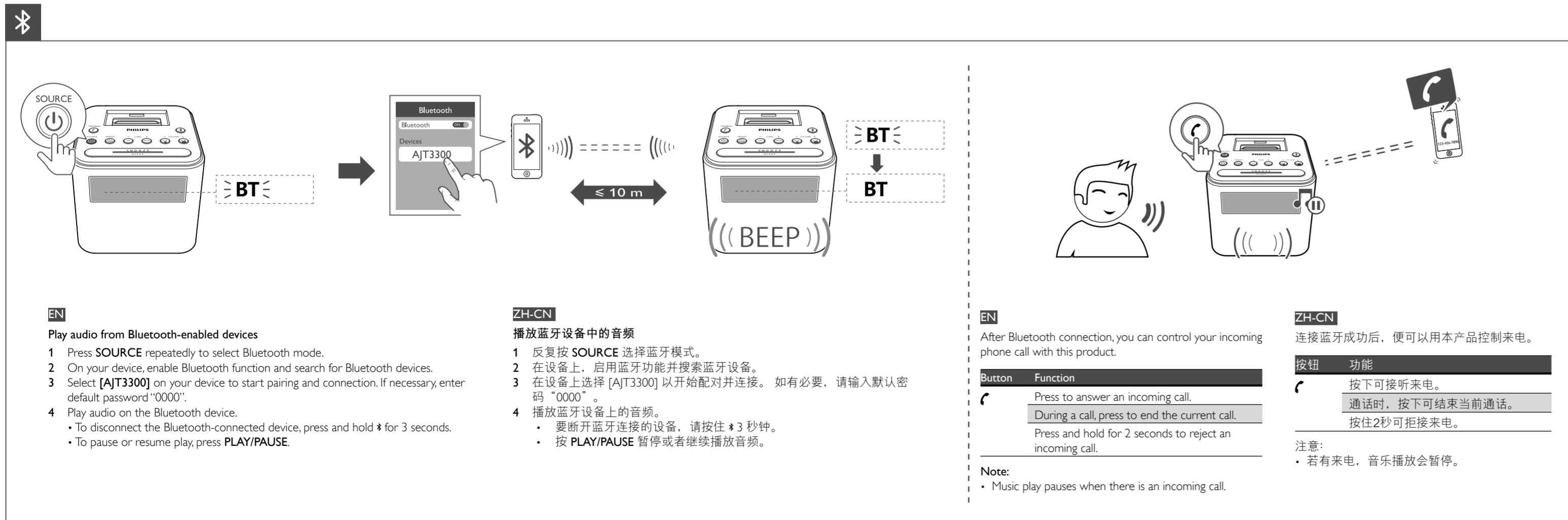
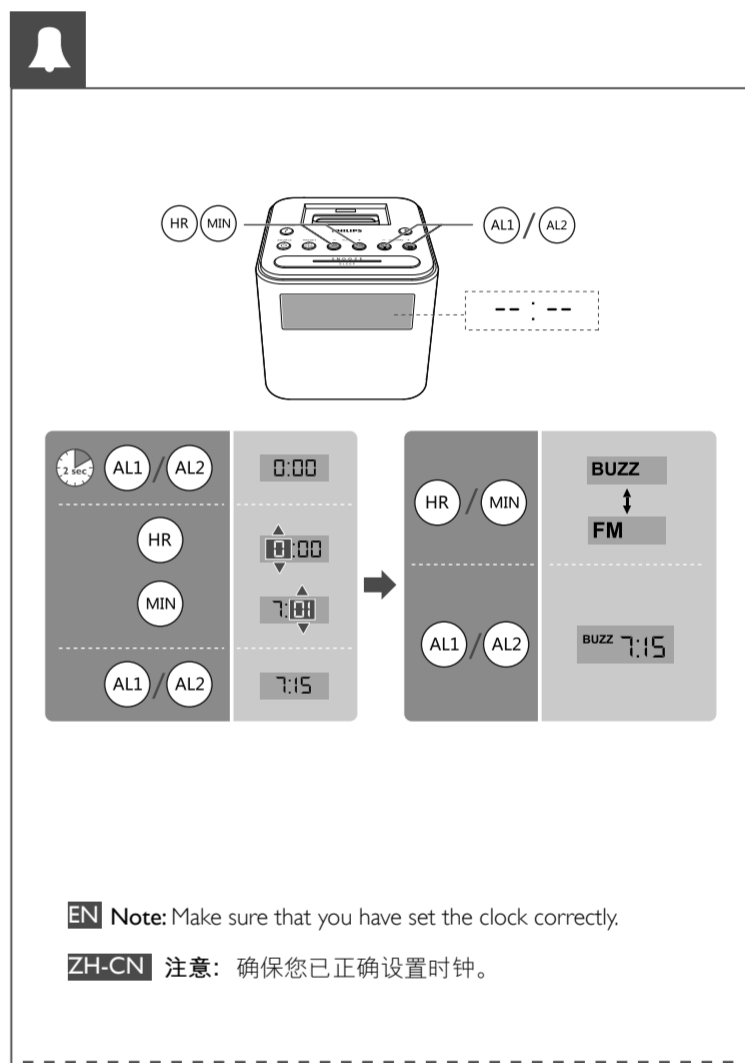
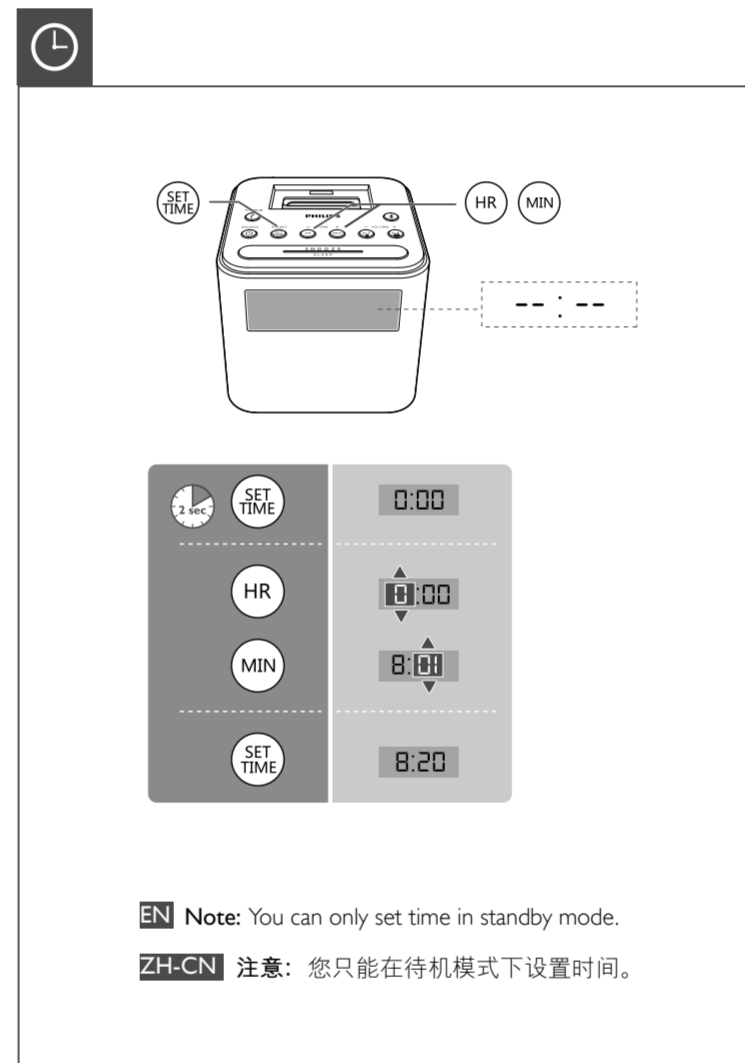
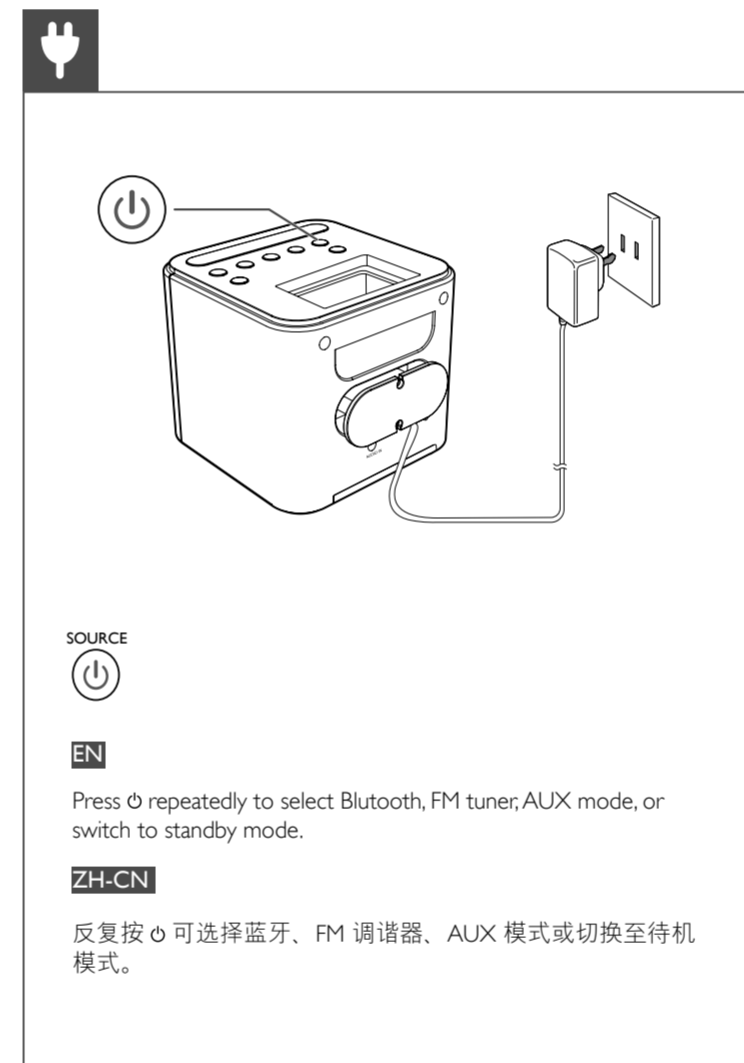
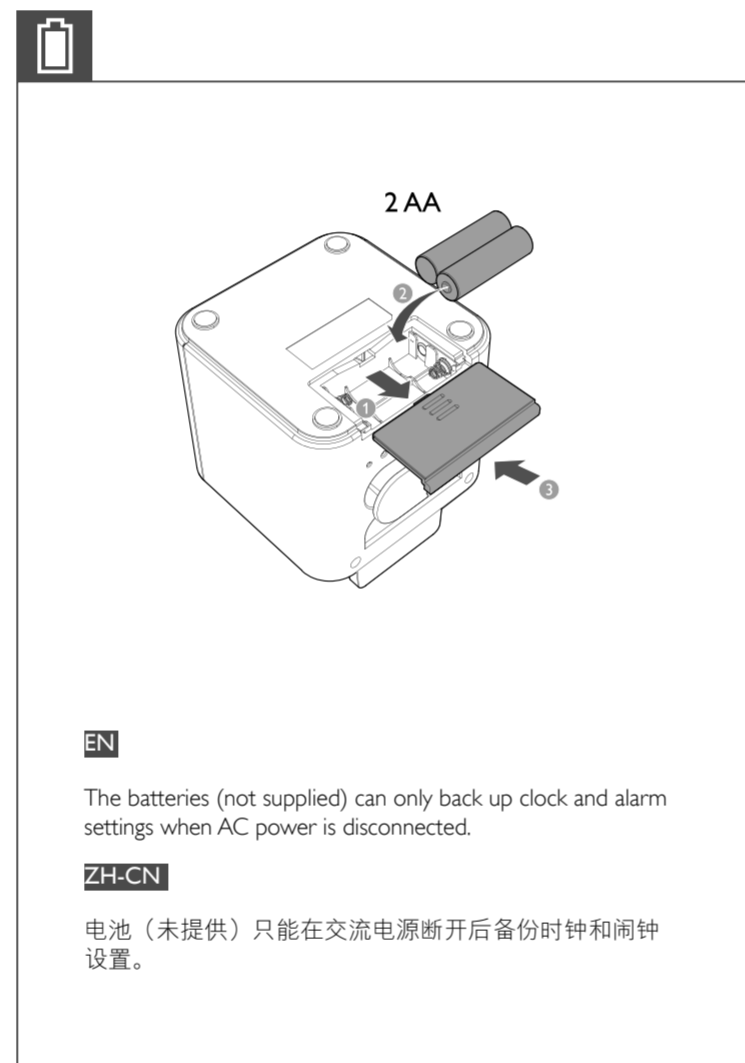
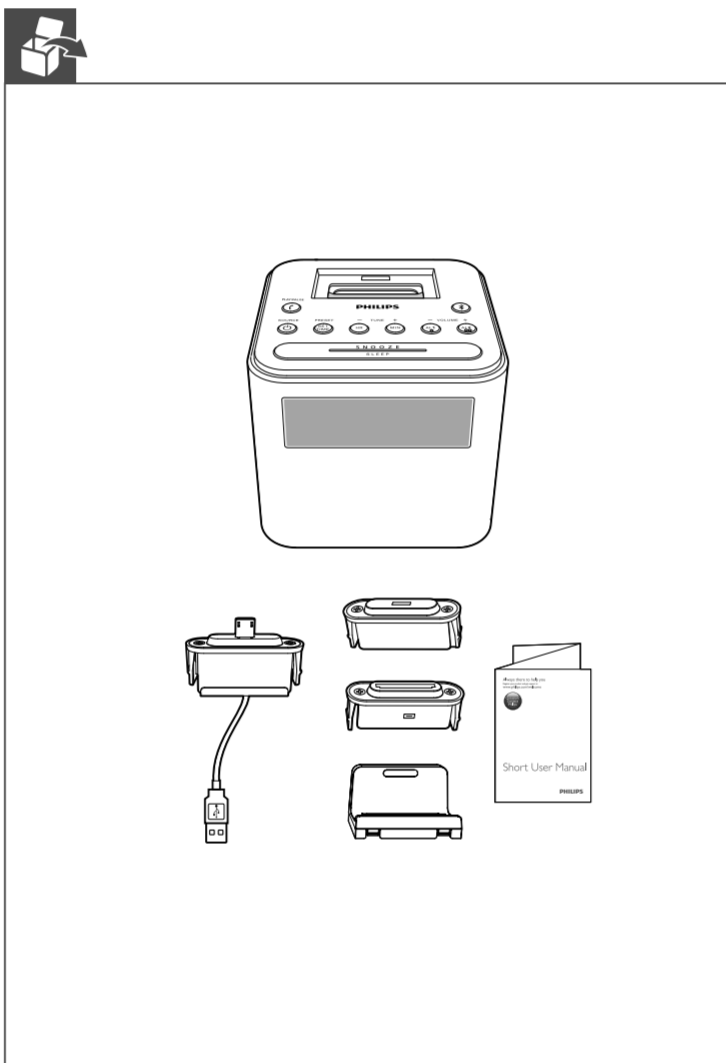


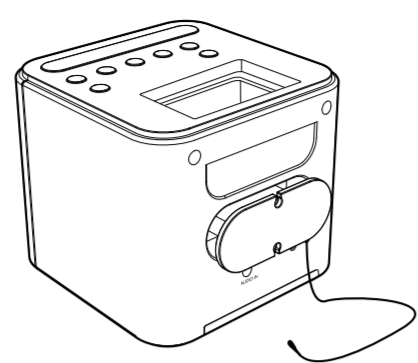
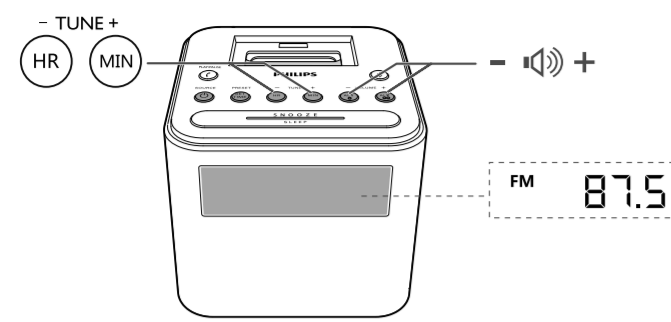
此“闪电标志”表示设备中的未绝缘材料可能导致触电。为了您家中每个人的安全，请勿卸下产品外壳。

“惊叹号”表示需要对某些功能多加注意，您应仔细阅读附带的说明书以防止出现操作和维护问题。

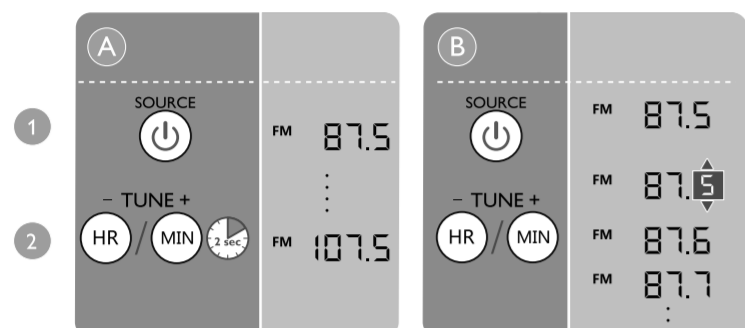
警告：为减少火灾或触电危险，此设备应避免淋雨或受潮，不得将装有液体的物体（如花瓶）放在此设备上。

注意：为防止触电，请将插头的宽插片完全插入宽插槽。





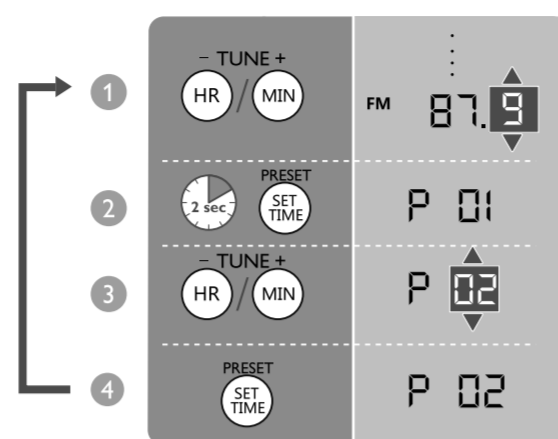
EN Tune to FM radio stations
ZH-CN 调谐至 FM 电台



EN
Tip: For better reception, fully extend and adjust the position of the antenna.

ZH-CN
提示: 要获得更好的接收效果, 请完全展开天线并调整其位置。

EN Store radio stations
ZH-CN 存储电台

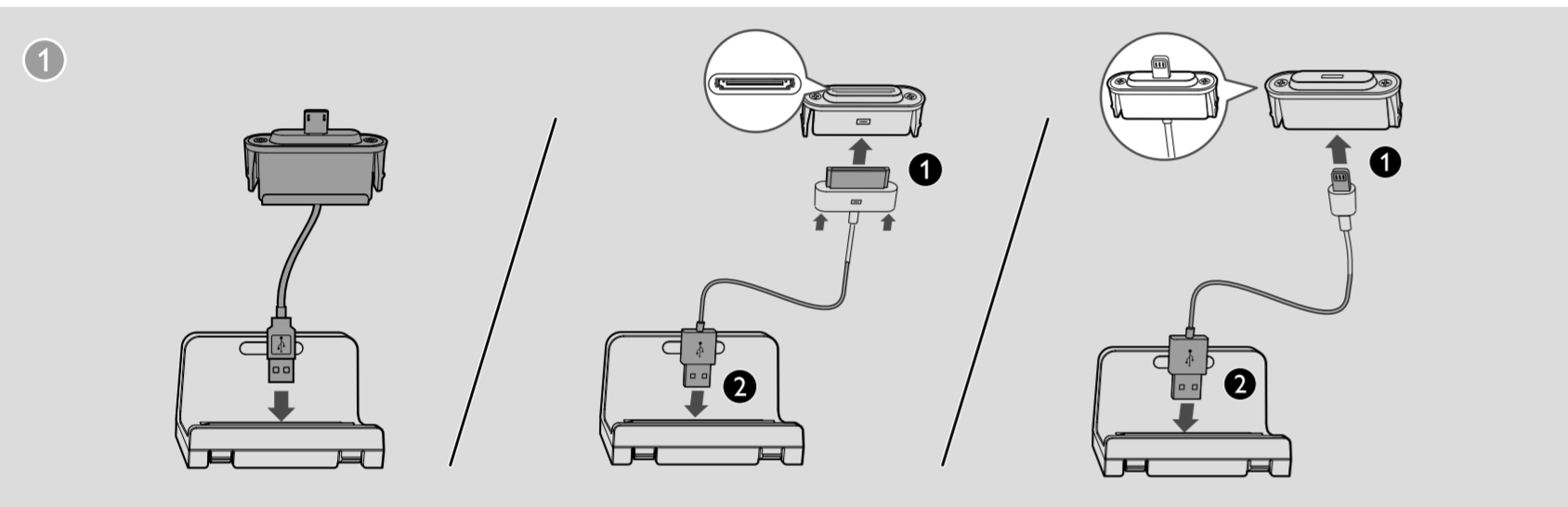


EN Select a preset radio station
ZH-CN 选择预设电台

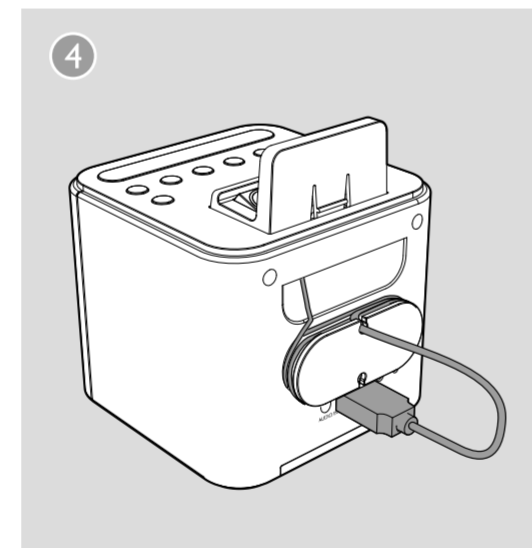
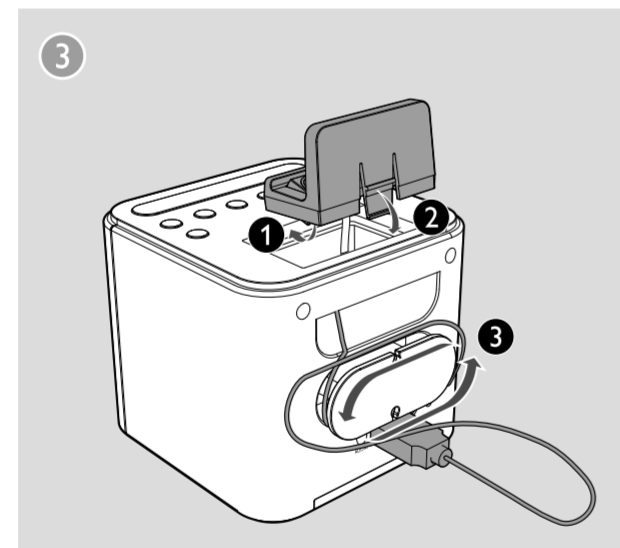
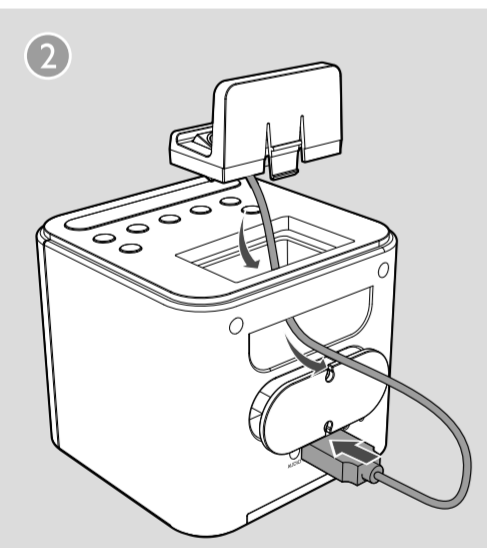


EN
Note:
• You can store a maximum of 10 preset radio stations.
• To overwrite a pre-stored radio station, store another one with its sequence number.

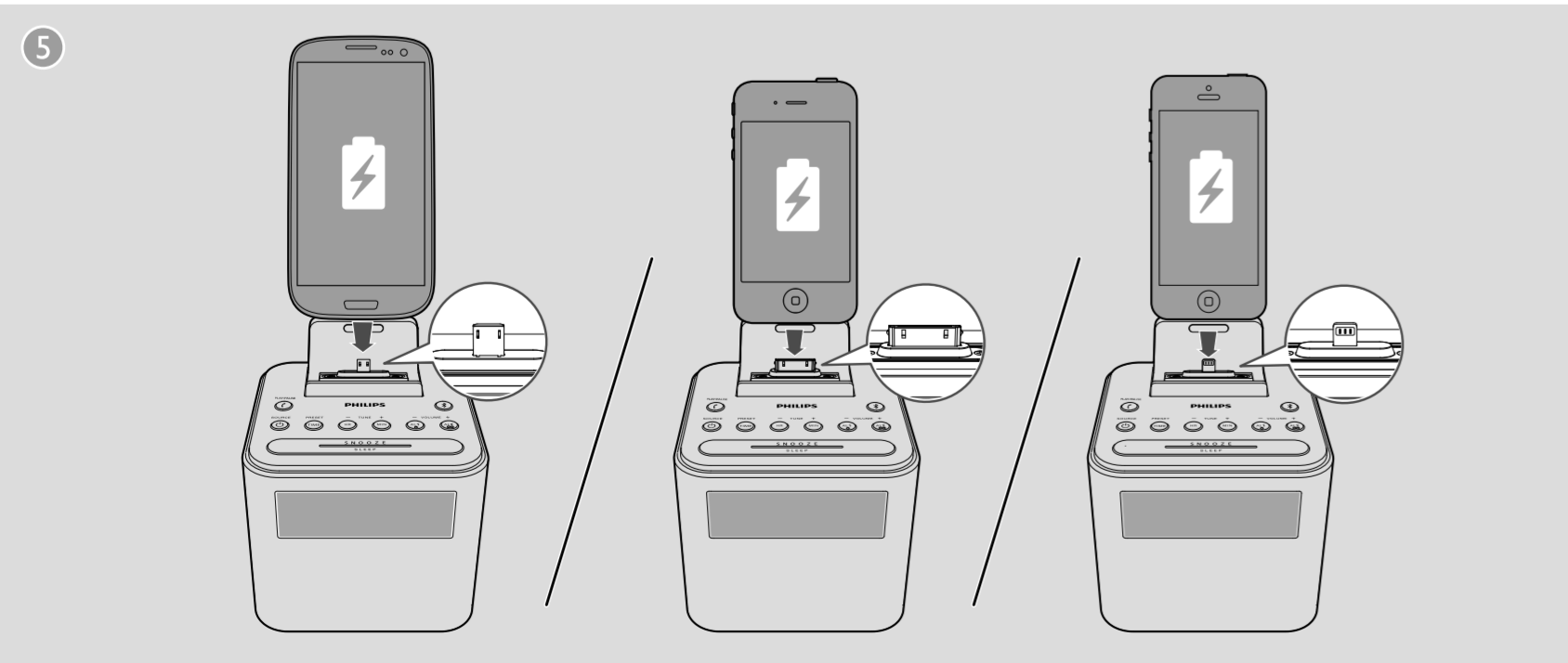
ZH-CN
注意:
• 您最多可存储 10 个预设电台。
• 要覆盖预存储的电台, 请用其序号存储其他电台。



EN
Charge your mobile devices
1 Connect the clock radio with your mobile device.
• For Android-powered mobile device with a micro USB socket: use the supplied cable to connect the product with the mobile device;
• For Apple device with a lightning or 30-pin connector: use the charging cable of the Apple device (not supplied) to connect the product with the mobile device.
2 Connect the clock radio to AC power.
• The mobile device begins to charge.



ZH-CN
为移动设备充电
1 将时钟收音机与移动设备相连。
• 对于具有微型 USB 插孔的 Android 移动设备: 用随附的线缆将产品与移动设备相连, 如图所示。
• 具有 Lightning 或 30 针接口的 Apple 设备: 用 Apple 设备的充电线缆 (未提供) 将产品与移动设备相连, 如图所示。
2 将时钟收音机连接至交流电源。
• 移动设备将开始充电。

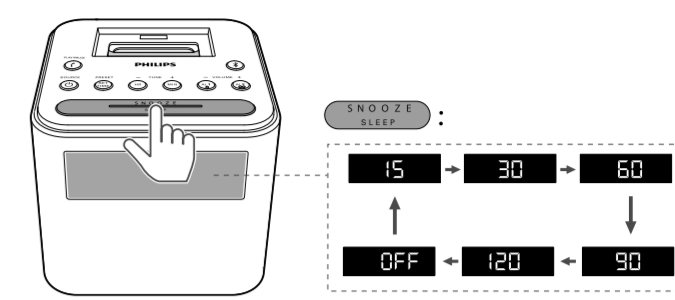
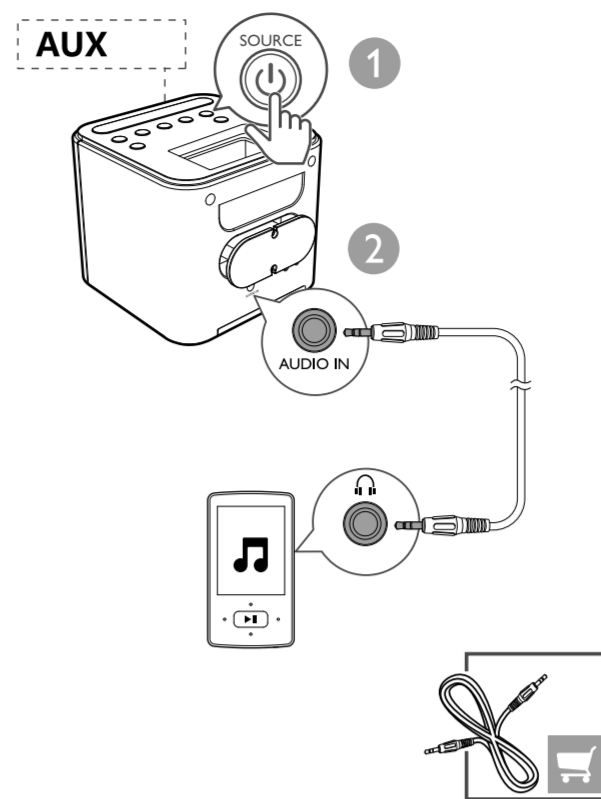


EN Specifications
Amplifier

Total Output Power	2W
Tuner (FM)	
Tuning Range	87.5-108 MHz
Tuning Grid	50 KHz
Sensitivity - Mono, 26 dB S/N Ratio	<22 dBf
Total Harmonic Distortion	<3%
Signal to Noise Ratio	>50 dBA
Bluetooth	
Bluetooth version	V3.0
Supported profiles	HFP, A2DP, AVRCP
Range	10 m (Free space)
General information	
AC power (power adapter)	Brand name: PHILIPS; Model: OH-1015A0551800U-CCC; Input: 100-240 V~, 50/60 Hz, 350 mA; Output: 5.5 V = 1.8 A
USB Port	5 V = 1 A
Operation Power Consumption	10 W
Standby Power Consumption	<1 W
Dimensions: - Main Unit (W x H x D)	112 x 101 x 125 mm
Weight - Main Unit	0.5 kg

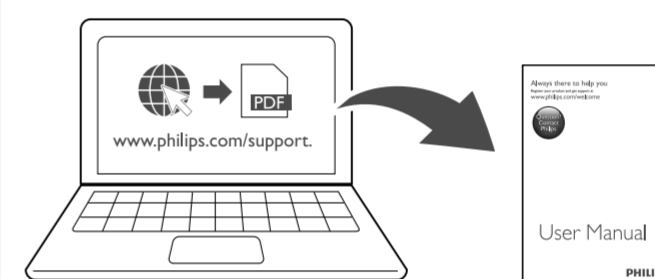
ZH-CN 规格
功放器

总输出功率	2 瓦
调谐器 (FM)	
调谐范围	87.5-108 兆赫
调谐栅	50 千赫
灵敏度	<22 dBf
- 单声道, 26 dB 信噪比	<22 dBf
总谐波失真	<3%
信噪比	>50 dBA
蓝牙	
蓝牙版本	V3.0
支持的模式	HFP, A2DP, AVRCP
范围	10 米 (开阔空间)
一般信息	
交流电源 (电源适配器)	品牌名称: 飞利浦; 型号: OH-1015A0551800U-CCC; 输入: 交流 100-240 伏, 50/60 赫兹, 350 毫安; 输出: 5.5 伏 = 1.8 安
USB 端口	5 伏 = 1 安
操作功耗	10 瓦
待机功耗	<1 瓦
尺寸: - 主装置 (宽 x 高 x 厚)	112 x 101 x 125 毫米
重量: - 主装置	0.5 千克

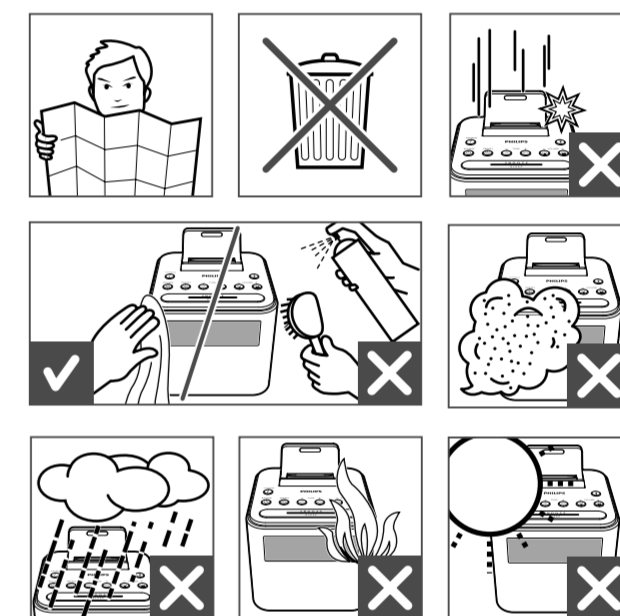


EN Press SLEEP repeatedly to select a period (in minutes).
After the set period, the product switches to standby mode automatically.
• To deactivate the sleep timer, press SLEEP repeatedly until [OFF] (off) is displayed.

ZH-CN 反复按 SLEEP 可选择时长 (以分钟为单位)。
预设时长结束后, 时钟收音机会自动切换至待机模式。
• 要禁用定时关机, 反复按 SLEEP 直到出现 [OFF] (关闭)。



EN
To download the full user manual, visit www.philips.com/support.
ZH-CN
要下载完整用户手册, 请访问 www.philips.com/support.



部件名称 Name of the Parts	有害有毒物质或元素 Hazardous/toxic substance			
	汞 (Hg) Mercury	镉 (Cd) Cadmium	六价铬 (Chromium 6+) (PBB)	多溴联苯 醚 (PBDE)
Housing 外壳	O	O	O	O
LCD Panel 液晶面板	X	O	O	O
Loudspeakers 喇叭单元	O	O	O	O
PWBs 电路板组件	X	O	O	O
Accessories (Cables) 附件 (电源线, 连接线)	X	O	O	O

O: 表示该有害有毒物质在该部件中的含量均在 SJ/T11363 - 2006 标准限定的限量要求以下。
X: 表示该有害有毒物质在该部件中的含量超出 SJ/T11363 - 2006 标准限定的限量要求。
x: 表示该有害有毒物质至少在该部件的某一均质材料中的含量超出 SJ/T11363 - 2006 标准限定的限量要求。
X: 表示该有害有毒物质至少在该部件的某一均质材料中的含量超出 SJ/T11363 - 2006 标准限定的限量要求。

环保使用期限 Environmental Protection Use Period
This logo refers to the period (10 years) during which the toxic or hazardous substances or elements contained in electronic information products will not leak or mutate so that the use of these substances or elements will not result in any severe environmental pollution, any bodily injury or damage to any assets.

This logo refers to the period (10 years) during which the toxic or hazardous substances or elements contained in electronic information products will not leak or mutate so that the use of these substances or elements will not result in any severe environmental pollution, any bodily injury or damage to any assets.