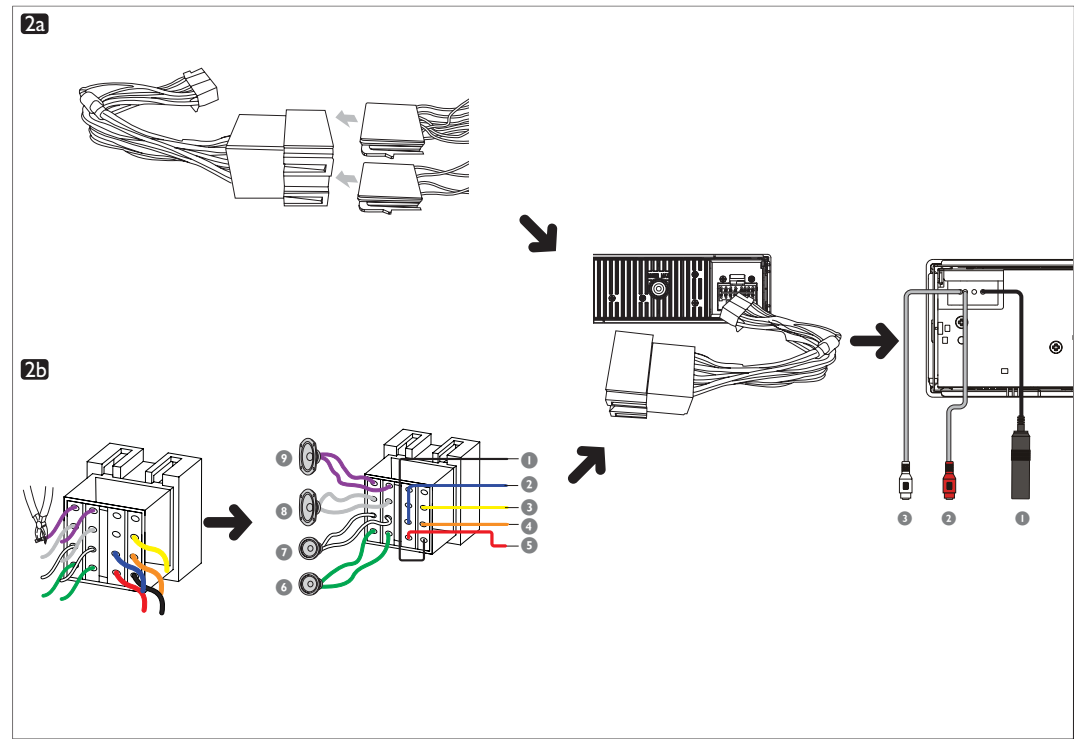
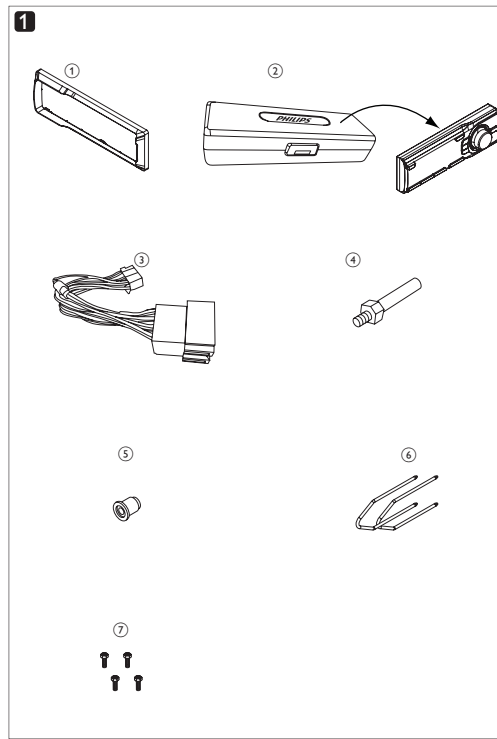




EN Installation/Connection Guide

**PHILIPS**



**English**

These instructions are for a typical installation. However, if your car has different requirements, make the corresponding adjustment. If you have any questions regarding installation kits, consult your Philips car audio dealer.

**! Caution**

- This unit is designed for negative ground (earth) 12V DC operation only.
- Always install this unit in the car dashboard. Other locations can be dangerous as the rear of the unit heats up during use.
- To avoid short-circuit before you connect, ensure that the ignition is off.
- Ensure that you connect the yellow and red power supply leads after all other leads are connected.
- Ensure that all loose leads are insulated with electrical tape.
- Ensure that the leads do not get caught under screws or in parts that will move (e.g. seat rail).
- Ensure that all ground (earth) leads are run to a common ground (earth) point.
- Use only the supplied mounting hardware for a safe and secure installation.
- Improper fuses can cause damage or fire. When you need to change the fuse, consult a professional.

**Note on the power supply lead (yellow)**

- When you connect other devices to this unit, ensure that the rating of the car circuit is higher than the total fuse value of all the connected devices.

**Notes on speaker connection**

- Never connect speaker wires to the metal body or chassis of the car.
- Never connect speaker wires with stripes to one another.

**Overview of parts 1**

These are the supplied parts needed to connect and install this unit.

- Carry case with front panel stored inside
- Trim plate
- Standard connector
- Disassembly tool x 2 pcs
- Rubber cushion
- Screw x 4 pcs
- Mounting bolt

**Connect wires: ISO connectors 2a**

**! Caution**

- Ensure that all loose leads are insulated with electrical tape.

- Pull out the ISO connectors from car dashboard and connect them to the bigger end of the supplied standard connector.
- Connect the other end of the supplied standard connector to the unit.
- Do the other connections, if applicable.

1	Antenna	To antenna
2	Rear line out (right)	To amplifier line in (right)
3	Rear line out (left)	To amplifier line in (left)

**Connect wires: without ISO connectors 2b**

**! Caution**

- Ensure that all loose leads are insulated with electrical tape.

- Cut off the bigger end of the supplied standard connector.
- Check the car's wiring carefully and connect them to the supplied standard connector.

1	Black	To a metal surface of the car First connect the black ground (earth) lead, then connect the yellow and red power supply leads.
2	Blue	To the electric antenna control lead or power supply lead of the antenna booster If there is no electric antenna or antenna booster, or it is manually operated telescopic antenna, it is not necessary to connect this lead.
3	Yellow	To the +12V car battery which is energized at all times.
4	Pink	To telephone mute terminal (if any).
5	Red	To the +12V power terminal of the ignition switch If there is no accessory position, connect to the +12V car battery terminal that is always live. Be sure to connect the black ground (earth) lead to a metal surface of the car first.
6	Green/black strip	Left speaker (Rear)
7	White/black strip	Left speaker (Front)
8	Gray/black strip	Right speaker (Front)
9	Purple/black strip	Right speaker (Rear)

- Do the other connections, if applicable.

1	Antenna	To antenna
2	Rear line out (right)	To amplifier line in (right)
3	Rear line out (left)	To amplifier line in (left)

**Attach the front panel 3**

- Attach the trim plate.
- Insert the left side of the panel in the chassis until it is correctly engaged.
- Press the right side of the panel until it is locked into place.

**Mount into the dashboard 4**

- Ensure that car dashboard opening is within these measurements:
  - If the car dashboard is bigger the supplied mounting sleeve is not suitable for the car. Remove the mounting sleeve with the removal keys and consult a professional for advice.
- If the car does not have an on-board drive or navigation computer, disconnect the negative terminal of the car battery.
  - If you disconnect the car battery in a car that has an on-board drive or navigation computer, the computer may lose its memory.
  - If the car battery is not disconnected, to avoid short-circuit, ensure that bare wires do not touch each other.
- Connect the supplied mounting bolt to the unit.
- Place the supplied rubber cushion over the end of the mounting bolt.
- Slide the unit into the dashboard until you hear a click sound.

- Reconnect the negative terminal of the car battery.

**Detach the front panel 5**

You can detach the front panel to deter theft.

- Press to release the panel.
- Pull the panel towards you to detach it from the chassis.
- Store the panel in the supplied carry case to protect it from dirt or damage.

**Replace fuse 6**

If there is no power, the fuse may have broken and need to be replaced.

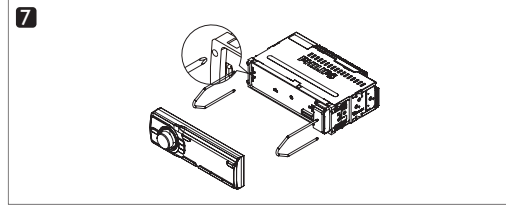
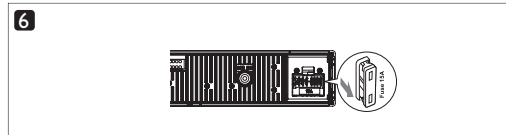
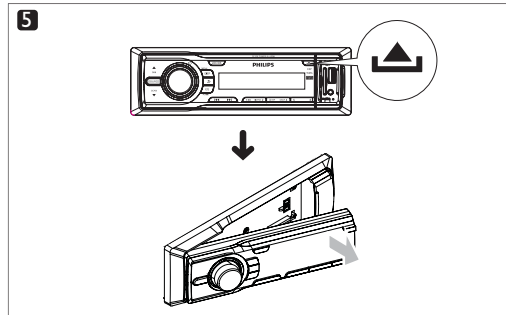
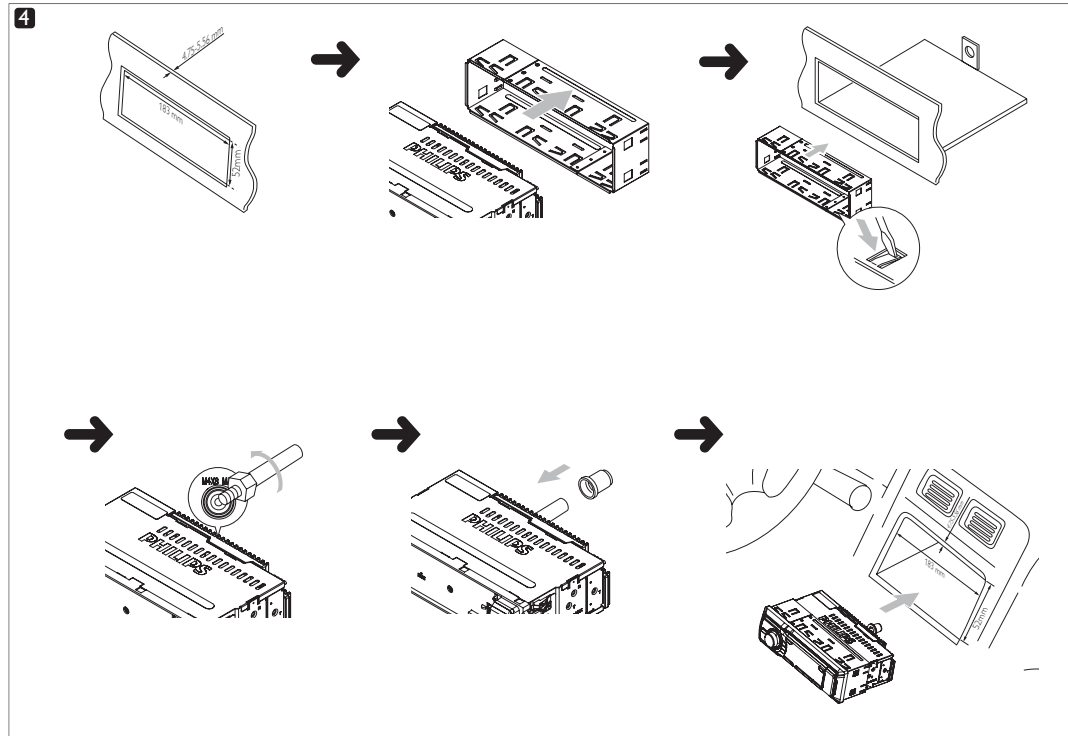
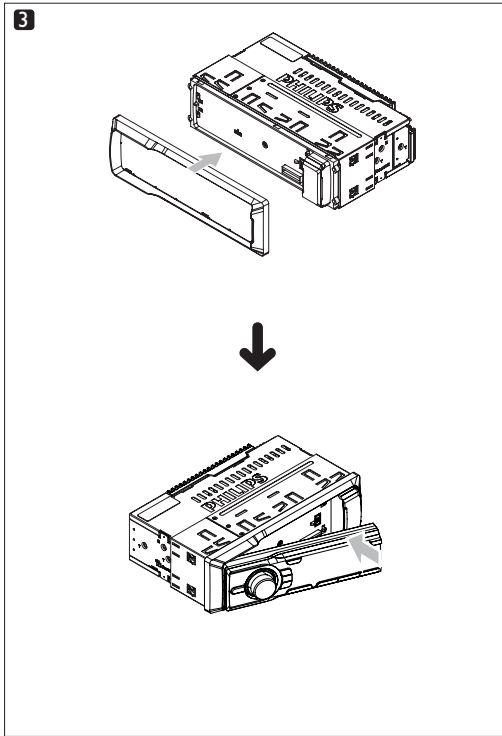
- Detach the front panel and take out the unit. (see 'Remove the unit' on page 23)
- Check the electric connection.
- Buy a fuse that matches the voltage of the damaged fuse (15A)
- Replace the fuse.

If the fuse is broken again after replacement, there might have internal malfunction. In such case, consult your Philips dealer.

**Remove the unit 7**

To repair or replace the unit, remove it from the dashboard.

- Detach the front panel.
- Pull out the unit by using the removal keys.



**English**

These instructions are for a typical installation. However, if your car has different requirements, make the corresponding adjustment. If you have any questions regarding installation kits, consult your Philips car audio dealer.

**Caution**

- This unit is designed for negative ground (earth) 12V DC operation only.
- Always install this unit in the car dashboard. Other locations can be dangerous as the rear of the unit heats up during use.
- To avoid short-circuit before you connect, ensure that the ignition is off.
- Ensure that you connect the yellow and red power supply leads after all other leads are connected.
- Ensure that all loose leads are insulated with electrical tape.
- Ensure that the leads do not get caught under screws or in parts that will move (e.g. seat rail).
- Ensure that all ground (earth) leads are run to a common ground (earth) point.
- Use only the supplied mounting hardware for a safe and secure installation.
- Improper fuses can cause damage or fire. When you need to change the fuse, consult a professional.

**Note on the power supply lead (yellow)**

- When you connect other devices to this unit, ensure that the rating of the car circuit is higher than the total fuse value of all the connected devices.

**Notes on speaker connections**

- Never connect speaker wires to the metal body or chassis of the car.
- Never connect speaker wires with stripes to one another.

**Overview of parts 1**

These are the supplied parts needed to connect and install this unit.

- Carry case with front panel stored inside
- Trim plate
- Standard connector
- Disassembly tool x 2 pcs
- Rubber cushion
- Screw x 4 pcs
- Mounting bolt

**Connect wires: ISO connectors 2a**

**Caution**

- Ensure that all loose leads are insulated with electrical tape.

- Pull out the ISO connectors from car dashboard and connect them to the bigger end of the supplied standard connector.
- Connect the other end of the supplied standard connector to the unit.
- Do the other connections, if applicable.

1	Antenna	To antenna
2	Rear line out (right)	To amplifier line in (right)
3	Rear line out (left)	To amplifier line in (left)

**Connect wires: without ISO connectors 2b**

**Caution**

- Ensure that all loose leads are insulated with electrical tape.

- Cut off the bigger end of the supplied standard connector.
- Check the car's wiring carefully and connect them to the supplied standard connector.

1	Black	To a metal surface of the car
---	-------	-------------------------------

First connect the black ground (earth) lead, then connect the yellow and red power supply leads.

2	Blue	To the electric antenna control lead or power supply lead of the antenna booster
---	------	--

If there is no electric antenna or antenna booster, or it is manually operated telescopic antenna, it is not necessary to connect this lead.

3	Yellow	To the +12V car battery which is energized at all times.
---	--------	--

4	Pink	To telephone mute terminal (if any).
---	------	--------------------------------------

5	Red	To the +12V power terminal which is energized in the accessory (ACC) position of the ignition switch
---	-----	--

If there is no accessory position, connect to the +12V car battery terminal that is always live. Be sure to connect the black ground (earth) lead to a metal surface of the car first.

6	Green/black strip	Left speaker (Rear)
---	-------------------	---------------------

7	White/black strip	Left speaker (Front)
---	-------------------	----------------------

8	Gray/black strip	Right speaker (Front)
---	------------------	-----------------------

9	Purple/black strip	Right speaker (Rear)
---	--------------------	----------------------

- Connect the supplied standard connector to the unit.

- Do the other connections, if applicable.

1	Antenna	To antenna
2	Rear line out (right)	To amplifier line in (right)
3	Rear line out (left)	To amplifier line in (left)

**Attach the front panel 3**

- Attach the trim plate.
- Insert the left side of the panel in the chassis until it is correctly engaged.
- Press the right side of the panel until it is locked into place.

**Mount into the dashboard 4**

- Ensure that car dashboard opening is within these measurements:
  - If the car dashboard is bigger, the supplied mounting sleeves is not suitable for the car. Remove the mounting sleeve with the removal keys and consult a professional for advice.
  - If the car does not have an on-board drive or navigation computer, disconnect the negative terminal of the car battery.
  - If you disconnect the car battery in a car that has an on-board drive or navigation computer, the computer may lose its memory.
  - If the car battery is not disconnected, to avoid short-circuit, ensure that bare wires do not touch each other.
- Connect the supplied mounting bolt to the unit.
- Place the supplied rubber cushion over the end of the mounting bolt.
- Slide the unit into the dashboard until you hear a click sound.

- Reconnect the negative terminal of the car battery.

**Detach the front panel 5**

You can detach the front panel to deter theft.

- Press to release the panel.
- Pull the panel towards you to detach it from the chassis.
- Store the panel in the supplied carry case to protect it from dirt or damage.

**Replace fuse 6**

If there is no power, the fuse may broke and need to be replaced.

- Detach the front panel and take out the unit. (see 'Remove the unit' on page 23)
- Check the electric connection.
- Buy a fuse that matches the voltage of the damaged fuse (15A)
- Replace the fuse.

If the fuse is broken again after replacement, there might be internal malfunction. In such case, consult your Philips dealer.

**Remove the unit 7**

To repair or replace the unit, remove it from the dashboard.

- Detach the front panel.
- Pull out the unit by using the removal keys.