

Quick Start Guide



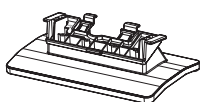
Step A **Install**

Step B **Prepare**

Step C **Enjoy**

What's in the Box?

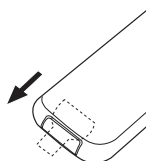
You should find these items upon opening the box.



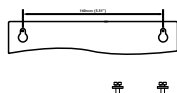
Stand



Remote control with
1 x CR2025 battery



Pull out the plastic
protective sheet
before use.



Mounting kit
(1x template, 2 x screws)



Quick start guide



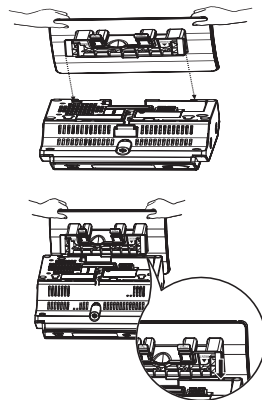
User manual

PHILIPS

Step A *Install*

Mounting stand onto the set

- 1 Put MCB275 on a flat and firm surface, rear side facing up.
- 2 As shown, align the stand to the slots at set's bottom, ▼ **FRONT** facing down.
- 3 Push the stand down into the slots.

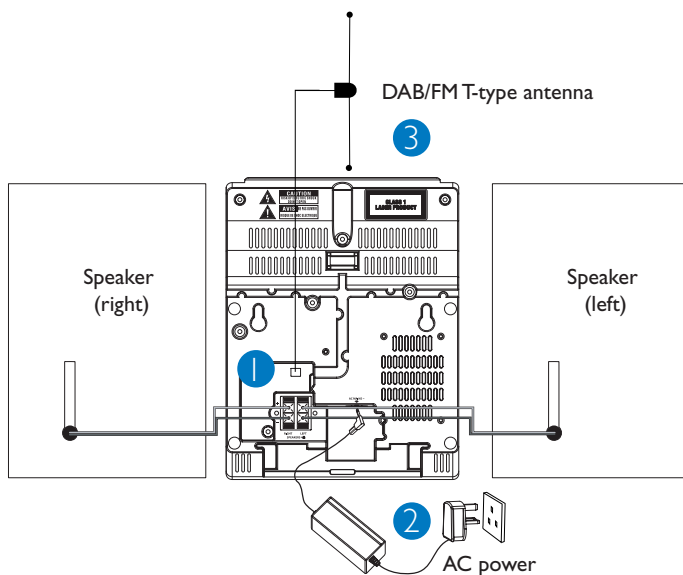


Note:

- For wall mounting, please refer to the **User Manual, Appendix: How to mount your MCB275 onto Walls**. You may need assistance from the qualified service personnel.

Rear connections

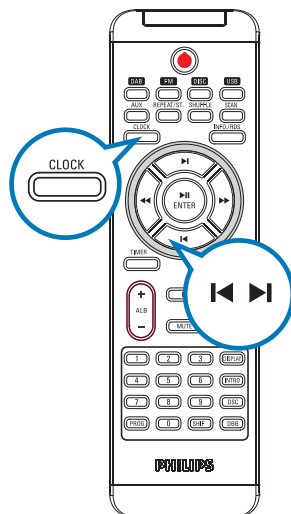
- 1 Connect the speaker cables.
- 2 Connect the power adaptor of the system.
- 3 Hang up one end of the T-shape DAB/FM antenna and keep the other end at horizontal angle to it to ensure sound DAB reception.



Step B Setup

Setting the clock

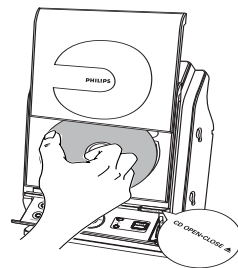
- 1 In the standby mode, press and hold **CLOCK** on the remote control.
→ The clock digits for the hours continue to flash.
- 2 Press **◀◀ / ▶▶** (or **◀ / ▶** on the remote control) repeatedly to set the hours.
- 3 Press **CLOCK** to confirm.
→ The minute digits start flashing.
- 4 Press **◀◀ / ▶▶** (or **◀ / ▶** on the remote control) repeatedly to set the minutes.
- 5 Press **CLOCK** to confirm the time.



Step C Enjoy

Playing a disc

- 1 Insert a disc into the disc loader.
→ Make sure the label side is facing you.
- 2 Press **▶||** to start playback.
- 3 To stop playback, press **■**.



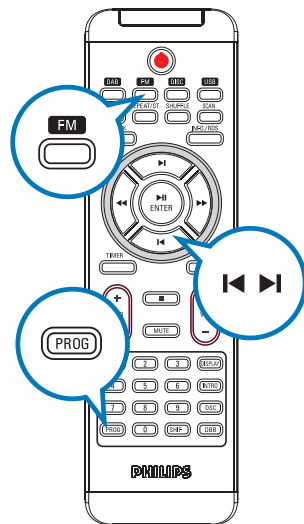
Playing a USB mass storage device

With the Hi-Fi system, you can use USB flash memory (USB 2.0 or USB1.1), USB flash players (USB 2.0 or USB1.1), memory cards (requires an additional card reader to work with this Hi-Fi system).

- 1 Insert the USB device's USB plug into the socket **↗** on the set.
- 2 Press **SOURCE** once or more (or **USB** on the remote control) to select **USB**.
- 3 Play the USB's audio files as you do with the albums/tracks on a CD.

Programming and tuning to FM radio stations

- 1 Press **SOURCE** repeatedly (or **FM** on the remote control) to select the tuner source.
- 2 Press **SCAN/PROGRAM** (or **PROG** on the remote control) for more than two seconds to program all available stations in order of waveband.
- 3 Press **ALBUM/PRESET +/-** (or **◀ / ▶** on the remote control) until the desired preset station is displayed.



Tuning to DAB stations

- 1 Press **SOURCE** on the system to select DAB (or press **DAB** on the remote control) to start automatic search for available DAB stations.
- 2 Press **SCAN** to search for all band III frequencies.
- 3 At the completion of full scan, press **ALBUM/PRESET +/-** (or **◀ / ▶** on the remote control) to select your desired DAB channels backward/forward.
- 4 Press **ENTER/▶ ||** to confirm and tune to your selected channel.

Tip

– See the User Manuals for detailed instructions on DAB operations.

