



Philips
Speaker System

1000W
NX



NTX400

The ultimate sound machines

Party like at the club with up to 1000W power and thumping bass boosted by NX Bass technology. Start playing wirelessly from Bluetooth compatible devices, MP3 CD, USB and other devices through audio in.

Designed to party

- 260K LED lights for great party atmosphere

Engineered for powerful sound

- NX bass button for instant sound boost & light effects
- 1000W RMS total output power

Enjoy your music from multiple sources

- Stream music via Bluetooth®
- Enjoy MP3 music directly from your portable USB devices
- Pair with your NFC enabled device with one touch
- Rip music from CDs onto a USB device

PHILIPS

Specifications

Sound

- Total Sound Power (RMS): 1000 W
- Sound enhancement: NX Bass, Dynamic Bass Boost 3 steps, Digital sound control 5 modes
- Output Power: 11800W PMPO

Loudspeakers

- Number of speaker boxes: 1
- Speaker drivers: 2 x 6.5" woofer, 2" tweeter x 2
- Speaker types: bass reflex speaker system

Audio playback

- Playback media: CD, CD-R, CD-RW, MP3-CD
- Disc playback modes: repeat/one/all/program, repeat/shuffle/program
- USB Direct playback modes: fast backward/fast forward, play/pause, previous/next, repeat, shuffle, stop

Audio recording

- Recording media: USB device
- USB recording sources: CD, tuner, AUX, USB, Bluetooth
- USB recording modes: instant record, programmed tracks, schedule radio program, single disc, single track

Tuner/Reception/Transmission

- Station presets: 20FM, 10AM
- Tuner bands: FM, MW
- Antenna: FM antenna, MW antenna
- Tuner enhancement: auto digital tuning, auto scan,

Easy set (plug & play)

Connectivity

- USB
- Audio in: 3.5mm stereo line in
- Aux in: 2xRCA (Audio)

Convenience

- Number of discs: 1
- Loader type: tray
- Light Effect: Peace, Passion, Power, Samba, Fiesta, Cielo, Custom

Accessories

- Remote control: 28-key with 2xAAA batteries
- Others: batteries for remote control, FM/MW antenna, Quick start guide
- User Manual: English
- Warranty: World Wide Guarantee booklet

Dimensions

- Main unit width: 287 mm
- Main unit height: 818 mm
- Main unit depth: 303 mm
- Packaging depth: 387 mm
- Packaging height: 390 mm
- Packaging width: 900 mm
- Gross Weight: 15.3 lb
- Net Weight: 13 kg

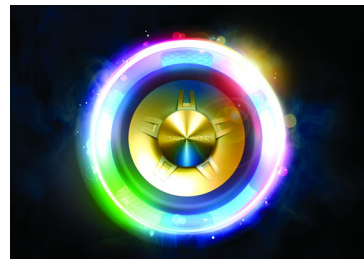
Power

- Power supply: 100 - 240V AC, 50/60Hz



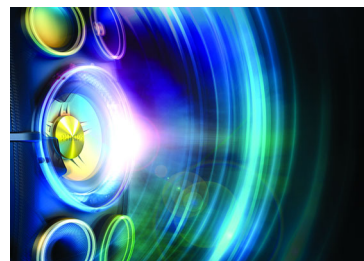
Highlights

260K LED lights



Add the ultimate atmosphere, ambiance and passion to any party, with thousands of colored lights that flicker, flash and flow in time with your music. Easily choose light colors to match your theme, or just pick one of the systems many presets. Flick the NX bass button to make the light show even more intense.

NX bass button



Available throughout the range, NX bass temporarily boosts bass and loudness to the extreme. Hit the NX bass button to instantly juice up your sound, make lighting effects go wild, and feel the immense bass of the subwoofers thundering through your bones.

Stream music via Bluetooth®



If you've got a big music collection stored away on a smartphone, tablet or computer, stream it to a NITRO system using digital Bluetooth® wireless music streaming and make it sound incredible. Powerful sound is rarely this easy or this convenient.

Easy NFC pairing

Pair with any NFC enabled device effortlessly. Gone is complicated wireless headphone pairing. Our new NFC technology is user friendly and easy to use, with one touch pairing for any NFC enabled smart device.



Issue date 2016-07-14

Version: 6.0.2

12 NC: 8670 001 30719
EAN: 48 95185 61759 6

© 2016 Koninklijke Philips N.V.
All Rights reserved.

Specifications are subject to change without notice.
Trademarks are the property of Koninklijke Philips N.V.
or their respective owners.

www.philips.com

* Avoid extensive use of the set in a volume higher than 85 decibel because this may damage your hearing.