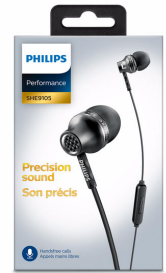
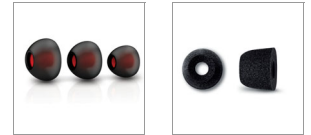




Philips
Headphones with mic

8.6mm drivers/semi-closed back
In-ear

SHE9105BK



Precision sound

with solid metal housing

The Philips SHE9105 headphones boasts premium drivers and precision-crafted metal housing for detailed yet pure sound. Oval sound tubes & choice of 3 ear-tips ensure comfort and fit, while in-line mic lets you switch from music to calls.

Enjoy quality sound

- Fine-tuned neodymium drivers for high frequency clarity
- Sturdy aluminum housing prevents vibration for sound clarity

Ultimate wearing comfort

- Curved housing and oval sound tubes for ergonomic comfort
- Silicon caps in choice of three sizes for customized fit

Always ready to go

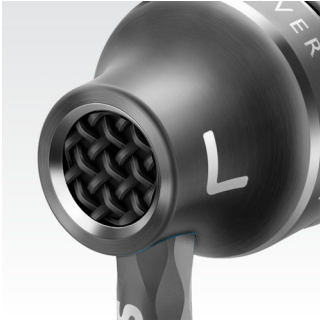
- Anti-tangle slider keeps your cables together neatly
- Durable Flexi-grip for strong headphone-to-cable connection
- Featuring in-line remote with mic for music and calls

PHILIPS

Headphones with mic
8.6mm drivers/semi-closed back In-ear

Highlights

Aluminum housing



The headphone's housing is crafted from sturdy aluminum, which prevents vibration for the purest sound performance. In addition, it protects the earphones from the wear and tear of everyday use.

Anti-tangle slider



The smart anti-tangle slider helps you easily keep the two earpiece cables neatly together, simply by gliding it up. No more hassles with tangles or knots!

Durable Flexi-grip connection

This soft yet durable and flexible connector between the earphone and cable helps protect against potential damage from repeated bending.

Finely tuned neodymium driver



Neodymium is the ideal material that produces strong magnetic field for greater sensitivity in a voice

coil, better bass response and higher overall sound quality. It features re-engineered 8.6mm neodymium drivers that are responsive to high frequencies and ensure pure sound clarity.

In-line remote with mic

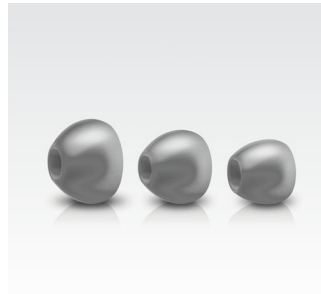


The built-in microphone lets you easily switch from music listening to taking phone calls - easily, so you'll always stay connected

Oval sound tubes

Your in-ear headphones are precisely designed to fit any ear. Its ergonomic oval sound tube and curved architecture ensure an optimized, secure and comfortable fit – always.

Silicon caps in three sizes



Your in-ear headphones come with a choice of 3 ear caps – from small to large – so you can select the perfect fit for your ears.

SHE9105BK/00

Specifications

Design

- Color: Black

Sound

- Acoustic system: Semi-closed
- Diaphragm: Mylar dome
- Impedance: 16 Ohm
- Magnet type: Neodymium
- Voice coil: Copper
- Sensitivity: 108 dB
- Speaker diameter: 8.6 mm
- Maximum power input: 30 mW
- Frequency response: 7 - 25 000 Hz
- Type: dynamic

Connectivity

- Connector: 3.5 mm stereo
- Type of cable: OFC
- Cable Connection: two-parallel, symmetric
- Cable length: 1.2 m
- Finishing of connector: gold-plated

Inner Carton

- Gross weight: 0.384 lb
- Gross weight: 0.174 kg
- GTIN: 2 69 25970 70046 1
- Inner carton (L x W x H): 18 x 8.2 x 10.5 cm
- Inner carton (L x W x H): 7.1 x 3.2 x 4.1 inch
- Nett weight: 0.089 lb
- Nett weight: 0.0402 kg
- Number of consumer packagings: 3
- Tare weight: 0.1338 kg
- Tare weight: 0.295 lb

Outer Carton

- Gross weight: 3.693 lb
- Gross weight: 1.675 kg
- GTIN: 1 69 25970 70046 4
- Outer carton (L x W x H): 38 x 18.1 x 24.8 cm
- Outer carton (L x W x H): 15 x 7.1 x 9.8 inch
- Nett weight: 0.709 lb
- Nett weight: 0.3216 kg
- Number of consumer packagings: 24
- Tare weight: 1.3534 kg
- Tare weight: 2.984 lb

Packaging dimensions

- Packaging type: Carton
- Type of shelf placement: Both
- Packaging dimensions (W x H x D): 9.5 x 17.5 x 2.5 cm
- Packaging dimensions (W x H x D): 3.7 x 6.9 x 1 inch
- EAN: 69 25970 70046 7
- Gross weight: 0.0474 kg
- Gross weight: 0.104 lb
- Nett weight: 0.029 lb
- Nett weight: 0.0134 kg
- Number of products included: 1
- Tare weight: 0.075 lb
- Tare weight: 0.034 kg

Product dimensions

- Product dimensions (W x H x D): 1.2 x 3.1 x 1.2 inch
- Product dimensions (W x H x D): 3 x 8 x 3 cm
- Weight: 0.030 lb
- Weight: 0.0134 kg



Issue date 2018-01-24

Version: 3.1.8

12 NC: 8670 001 21472
EAN: 69 25970 70046 7

© 2018 Koninklijke Philips N.V.
All Rights reserved.

Specifications are subject to change without notice.
Trademarks are the property of Koninklijke Philips N.V.
or their respective owners.

www.philips.com