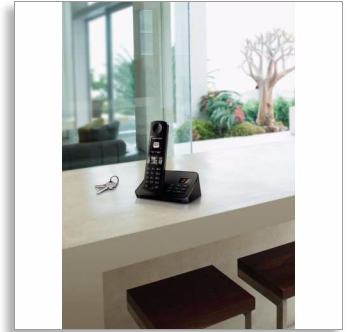




Philips
Cordless phone

30 min answering machine
1.7" display/ white backlight
Speakerphone



D6051B

Rich set of features

Outstanding sound quality of HQ-Sound meets ergonomic and modern design. With large, full-color display and rich set of features like keypad backlight, privacy settings, baby monitor and answering machine, this phone has all that you need.

As simple as ever

- High contrast, 4.3cm (1.7") TFT color display
- Up to 30 min. message on your answering machine
- Privacy settings: call barring, silence mode with filtering
- Baby monitor alerts you when baby needs your attention
- Keypad backlight for fast access even in dark room
- Textured back cover for non-slip grip
- Up to 18 hours talk time

Exceptional sound

- HQ-Sound: high quality acoustic engineering for superb sound
- MySound profiles to match your sound preference
- Full-duplex echo cancellation ensures a smooth conversation
- Freestanding handset with a speaker for easy handsfree calls

Eco-conscious product

- Low radiation (ECO and ECO+ modes) and power consumption



PHILIPS

Cordless phone
30 min answering machine 1.7" display/ white backlight, Speakerphone

D6051B/BR

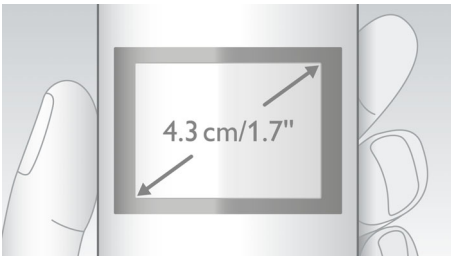
Highlights

Full-duplex echo cancellation



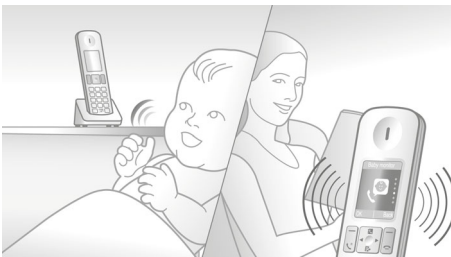
Natural conversation does not involve taking turns – there is always some natural overlap. Now thanks to our full-duplex echo cancellation, you can hear perfectly, even if you are both talking at the same time.

4.3cm (1.7") TFT color display



High contrast, 4.3cm (1.7") TFT color display

Baby monitor



Receive an alert when your baby needs you. Just place the DECT handset in the baby room and receive an alert on your base or on another DECT phone (i.e.. another landline number) or mobile phone (when you're out) when the baby starts to cry.

Eco-conscious model with ECO+



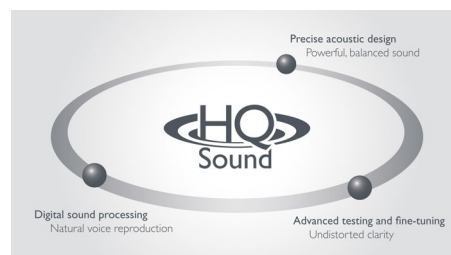
Philips phones are energy efficient and designed to be respectful to the environment. When ECO mode is activated the emitted radiation is reduced by up to 60%, and up to 95% when the phone is charging. With ECO+ mode activation the radiation drops to zero.

Handset speakerphone



Handsfree mode uses a built-in loud speaker to amplify the voice of the caller, allowing you to speak and listen during a call without holding the phone to your ear. This is especially useful if you want to share the call with others or simply multitask.

HQ-Sound



Philips cordless phones with HQ-Sound: build upon decades of experience and breakthrough innovations in developing Hi-Fi audio products and high-end headphones to deliver excellent voice clarity on our DECT phones. When it comes to improving sound quality, our acoustics engineers and architects have thought of everything – high quality

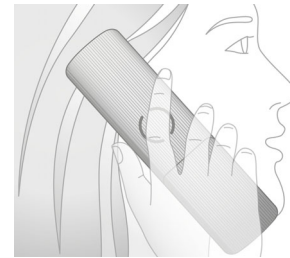
components, digital signal processing, precise acoustic design, advanced testing and fine-tuning. The result is sound that is crisp, clear and authentic. Sound so good and natural, it is almost like being there in person.

Keypad backlight



The soft amber backlight makes keys easy to read in low light conditions and at night.

Non-slip grip



The rear of the handset is treated with a special texture for added comfort and better grip.

Privacy modes



Value your privacy and quiet at home? Easily disable the ringtones for specific "no call" times to enjoy peace and silence. An additional filtering function allows any number chosen from the phone book to still ring when calling, making sure that only "right" people can reach you. Thanks to call barring you can avoid expensive phone bill surprises by blocking calls to specific numbers, to numbers starting with certain digits (for example pay per call numbers) or to specific area codes.

Specifications

Picture/Display

- Display size: 4.3cm / 1.7"
- Display type: TFT color 262K
- Backlight: Yes
- Backlight color: White

Answering Machine

- Recording time capacity: up to 30 minutes
- Pre-recorded OGM
- Message counter on base: Amber counter (2 x 7 segments)
- Answering machine control: from base & handset
- Loud speaker on base

Memory Capacity

- VIP Caller Identification
- Phonebook: 100 names and numbers
- Redial List Capacity: 20 last numbers
- Call log entries: 50 entries
- Phonebook store in the base

Sound

- HQ-Sound
- Sound Profile: MySound
- Volume control on handset
- Ringtones on handset: 15 polyphonic

Convenience

- Menu structure in the handset: Icon Menu
- Speakerphone - talk handsfree
- Personalization: Silence mode and Night mode
- Call barring: Restrict the phone from making specific outgoing calls
- Signal strength indicator: 3- bar indicator
- Battery level indicator: 5- bar battery icon
- Intercom - multiple handsets
- Room monitoring
- Date / Time display
- Alarm Clock
- Event light on the handset
- Programmable hot keys: Keys 1 to 9
- Call Management: Call Waiting*, Caller ID*, Microphone mute, Missed Calls, Received Calls
- Key tone on/off
- Auto Registration
- Auto hang up
- Multi base capability: 1
- Multi handset capability: Up to 4

- Number of keys: 22
- Backlit keypad: Soft Amber
- Enlarge dialing digit
- Base Station keys: Paging key
- Charge time: 8 hours
- Line cord length: 1.8m
- Power cord length: 1.8m
- Range: Open field <300m; indoor <50m
- Base ringer
- Keypad lock
- Non-slip grip: Pinstripe
- Up to 18 hrs talk time
- Up to 250 hrs standby time

Power

- Battery capacity: 550 mAh
- Battery type: AAA NiMH Rechargeable
- Mains power: AC 100-240V ~50/60Hz
- Power Consumption: < 0.75 W

Security

- Transmission encryption : Yes

Network Features

- Compatible: GAP

SAR Value

- Philips handsets: <0.1 W/kg

Eco Design

- EcoMode: automatic & manual
- Eco+

Packaging dimensions

- EAN: 87 12581 66617 0
- Type of shelf placement: Dummy
- Number of products included: 1
- Packaging type: Dummy
- Packaging dimensions (W x H x D): 7,3 x 5,4 x 3,1 inch
- Packaging dimensions (W x H x D): 18,5 x 13,6 x 8 cm
- Gross weight: 0,994 lb
- Gross weight: 0,451 kg
- Nett weight: 0,780 lb
- Nett weight: 0,354 kg
- Tare weight: 0,214 lb
- Tare weight: 0,097 kg



Issue date 2015-04-24

Version: 3.1.3

12 NC: 8670 000 97141
EAN: 87 12581 66617 0

© 2015 Koninklijke Philips N.V.
All Rights reserved.

Specifications are subject to change without notice.
Trademarks are the property of Koninklijke Philips N.V.
or their respective owners.

www.philips.com