

Mini Hi-Fi System

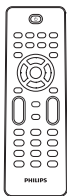
FWM153



Quick start guide

- 1 Connect
- 2 Setup
- 3 Enjoy

What's in the box



Remote Control MP3 link cable AC power adaptor

User manual

Quick Start Guide

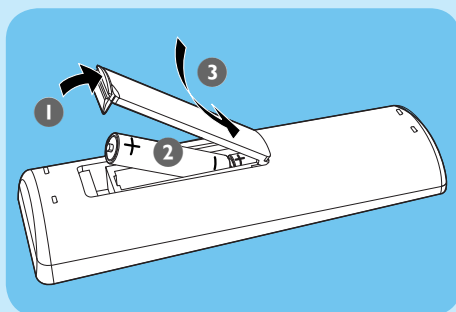
1 Connect

A Prepare the remote control

- 1 Open the battery compartment.
- 2 Insert 2 AAA batteries with correct polarity (+/-) as indicated.
- 3 Close the battery compartment.

Note

- Before you press any function button on the remote control, press a source button to select source with the remote control.



B Connect Speaker

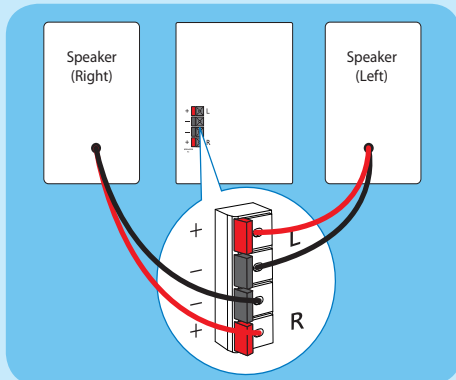
Note

- Ensure that the colors of the speaker wires and terminals are matched.

- 1 Connect the speaker wires to the matching speaker terminals on the main unit.

Tip

- See the User Manual for how to connect other equipment to this system.



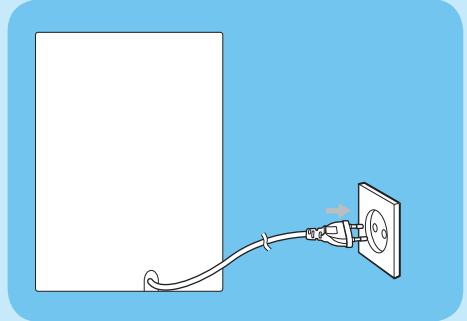
1

Connect

C Connect power

! Caution

- If your power supply voltage is 110V-127V, adjust the voltage selector (on the back of the main unit) to 110V-127V.
- Risk of electric shock! When you unplug the AC power cord, always pull the plug from the socket. Never pull the cord.
- Before connecting the AC power cord, ensure you have completed all other connections.



- 1 Connect the power cord to the wall outlet.

2

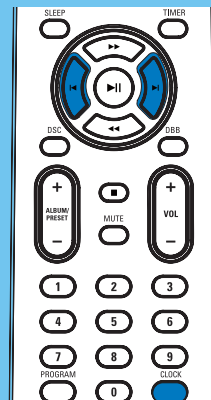
Setup

A Set clock

- 1 In standby mode, press and hold **CLOCK**.
↳ The hour digits are displayed and begin to blink.
- 2 Press **◀/▶** on the remote control to set the hours.
- 3 Press **CLOCK**.
↳ The minute digits are displayed and begin to blink.
- 4 Press **◀/▶** to set the minutes.
- 5 Press **CLOCK** to confirm the time.

* Tip

- During play, you can press **DISPLAY** on the remote control to view the clock.

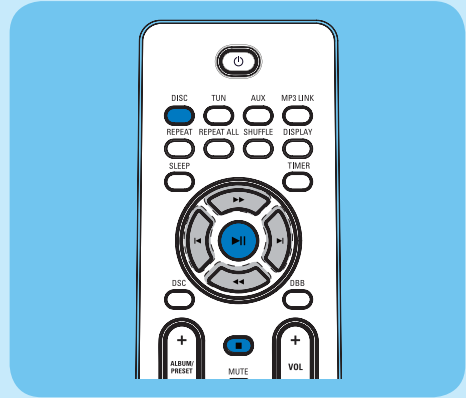


3

Enjoy

A Play disc

- 1 Press **DISC** to select the disc source.
- 2 Press **OPEN/CLOSE**▲ on the front panel to open the disc tray.
- 3 Insert a disc with the printed side facing up, then close the disc tray.
 - ↳ Play starts automatically.
 - To pause/resume play, press ►||.
 - To stop play, press ■.
 - To skip to a track, press ◀/▶.
 - To search within a track, press and hold ◀◀/▶▶. Release to resume normal play.



B Program radio stations automatically

Note

You can program a maximum of 40 preset radio stations (20 FM radio stations and 20 AM radio stations).

- 1 In tuner mode, press and hold **PROGRAM** for 2 seconds to activate automatic program mode.
 - ↳ [AUTO] (auto) begins to blink.
 - ↳ All available stations are programmed in the order of waveband reception strength.

↳ The first programmed radio station is broadcast automatically.

Tip

Detailed features and additional functions are described in the user manual.



© Royal Philips Electronics N.V. 2009
All rights reserved.

Specifications are subject to change without notice.
Trademarks are the property of Koninklijke Philips Electronics N.V. or their respective owners.