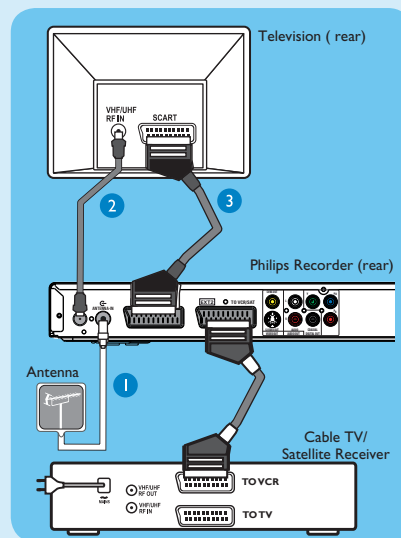


1 Connect

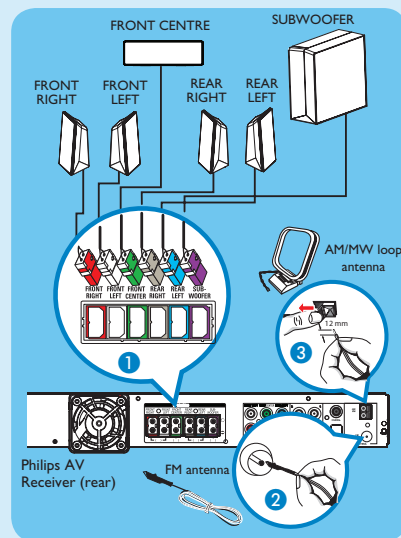
A Connecting Recorder and TV



- 1 Unplug the existing antenna cable from your TV and connect it to the **ANTENNA IN** socket on the recorder.
- If you have a Cable Box or Satellite Receiver, connect a scart cable from the **EXT2-TO VCR/SAT** scart socket on the recorder to the SCART (TO VCR) socket on the Cable Box/Satellite Receiver.
- Note** The antenna connection may not be required, depending on the capabilities of your Cable Box / Satellite Receiver. Refer to its user manual for more information.
- 2 Connect an RF antenna cable (supplied) from the **TV-OUT** socket on the recorder to the Antenna In socket on the TV.
- 3 Connect a scart cable (supplied) from the **EXT1-TO TV** scart socket on the recorder to the SCART socket on your TV.
- 4 Plug in the power cable from the recorder to an AC power outlet.

Note Refer to the accompanying User Manual for other possible connections.

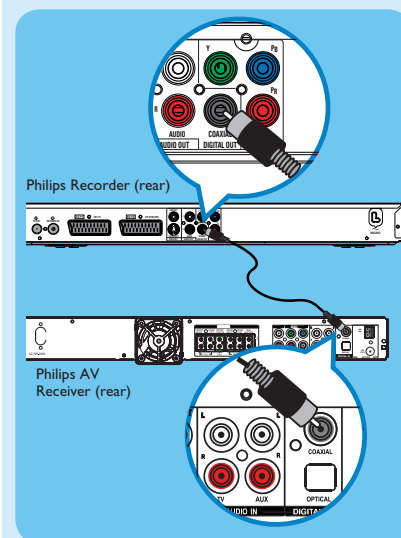
B Connecting Speakers and radio antennas to AV Receiver



- 1 Connect the various coloured plugs from the speakers and subwoofer to the same coloured sockets on the AV Receiver.
- 2 Connect the FM antenna to the inner pin of the FM 75 Ω socket. Extend the antenna for optimum reception.
- 3 Unfold the AM/MW loop antenna and fix the claw into the slot. Push the tabs and insert the wires into the AM/MW sockets.
- 4 Plug in the power cable from the AV Receiver to an AC power outlet.

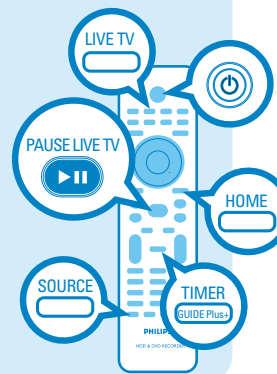
Note Keep the antennas away from the electronic devices to prevent unwanted interference.

C Connecting Recorder and AV Receiver



This connection enables you to hear the recorder playback from the AV Receiver. It supports multi-channel surround sound output.

- Connect the coaxial cable (supplied) between the **COAXIAL OUT** socket on the recorder and **COAXIAL IN** socket on the AV Receiver.



2 Set up

A Finding the viewing channel

- 1 Press **STANDBY-ON** on the recorder.
- 2 Turn on the TV. You should see the installation menu.



- 3 In case you don't see the recorder's setting menu, press the Channel Down button on the TV's remote control repeatedly (or AV, SELECT, - button) until you see the menu. This is the correct viewing channel for the recorder.

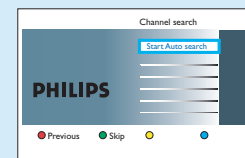
B Start initial installation

Use the recorder's remote control and follow the on-screen instructions to complete the installation.

- 1 Select the desired menu language, your country and the TV shape.

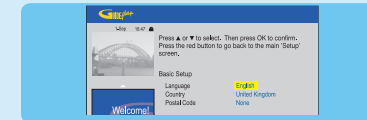
Note Press **OK** or the **Green** button on the remote control to go to the next screen.

- 2 Press **OK** to start automatic analogue channel search.



- 3 Once complete, press the **Green** button to continue.
- 4 Enter the correct time in the entry field, press **OK** followed by the **Green** button to continue. Proceed the same for date entry.
- 5 To continue with the GUIDE Plus+ installation, press the **Green** button.
- Otherwise, press the **Red** button to skip.

C Install the GUIDE Plus+ system



- Follow the on-screen instructions to select your language, country and enter the postal code of your area.
- Note** If no or wrong postal code is entered, it will cause no GUIDE Plus+ (EPG) service information.

D Load the TV listing data

- 1 Press **TIMER (GUIDE Plus+)** to exit GUIDE Plus+ system. Leave the recorder in 'standby' mode and turn 'on' the set-top box overnight to collect the TV listing data, this may take up to 24 hours.

Note If you tune to your Host Channel before going to 'standby' mode, this recorder will start downloading the TV listings data immediately.

- 2 Check the { Editor } screen the next day to ensure the source and programme numbers are matching for all channels.

F Turn on the AV Receiver and fine-tune the speakers

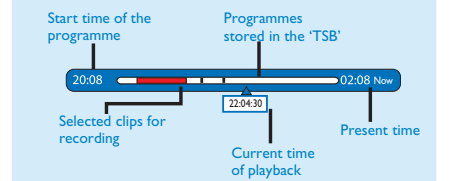
- 1 Press **STANDBY-ON** on the AV Receiver.
- If you cannot hear the playback from the recorder, press **SOURCE** on the AV Receiver repeatedly until 'COAX IN' appears on the display panel.
- To adjust or fine-tune the speaker settings**
- 2 Press and hold **PROGRAM** on the AV Receiver for more than five seconds.
- 3 Press **LEFT** or **RIGHT** to toggle between 'CENTER DELAY', 'REAR DELAY', 'TEST TONE' and 'EXIT' setting options.
- 4 Press **PROGRAM** to select an option.
- 5 Rotate the **VOL** control to scroll through the various delay time options, then press **PROGRAM** to confirm your setting.
- Repeat steps 3-5 for other settings options.
- 6 To exit the speaker setting mode, press **LEFT** or **RIGHT** until 'EXIT' appears.

3 Enjoy

About the Time Shift Buffer (TSB)

Once you turn on the recorder, the selected TV programme will be stored in a temporary hard disk storage called Time Shift Buffer 'TSB'. The 'TSB' can store up to 6 hours of programmes temporarily.

Press **INFO** to display the Time Shift video bar.



Notes:

- The contents in the time shift video bar will be cleared when you press **STANDBY ON**.
- The blue LED on the recorder will be lit up when the Time Shift Buffer is active or when you playback a recording from the hard disk drive.

Watch TV – Pause live TV

Your Philips Recorder allows you to control the TV programme. You can **PAUSE** it as if you were in control of the live broadcast.

- 1 Turn on your recorder to the live TV mode and press **P +/-** to select a TV programme.
- To hear recorder playback from the AV Receiver, turn on the AV Receiver. If no sound, press **SOURCE** repeatedly to change the input source mode for the AV Receiver to 'COAX IN'.
- 2 Press **PAUSE LIVE TV** to suspend it.
- 3 Press **PAUSE LIVE TV** again to continue.
- 4 To return to live broadcast, press **LIVE TV**.

About the internal hard disk drive

This recorder's hard disk drive can be used as a Media Jukebox, allowing you to store and playback your TV programmes, videos, music and photos files.

Press **HOME** on the remote control to access your contents stored in the { Hard Disk }.

3 Enjoy

Record to hard disk

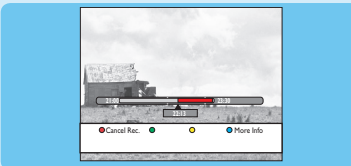
A Record current TV programme

- 1 Press **REC** to start recording. It can record up to 6 hours.

Note To set the recording time length, press **REC** repeatedly to extend the recording time in 30-minute increments, up to 6 hours.

- 2 To stop the recording before the scheduled time, press **STOP**.

B Mark a specific content in the Time Shift Buffer for recording



- 1 Press **left** or **right** to search for the scene where you want to record.

- 2 Press **REC** to start recording from here.

Note Pressing the **Red** button will cancel the recording.

- 3 Press **right** to search for the scene to end the recording, then press **STOP**.

Note The title will be marked in red and the recording will only take effect when you turn off the recorder.

C Using the GUIDE Plus+ system

Make sure that the GUIDE Plus+ TV listing data download is completed.

- 1 Press **TIMER (GUIDE Plus+)**. It shows the list of TV programmes that are currently broadcast and the next 8 days of TV programmes.



- 2 Press **down** to select a TV channel.

Notes

- To see an overview of all the available channels, press the **Yellow** button on the remote control.
- To go directly to the previous day's or the next day's TV listing, press **left/right**.
- To scroll up or down a page, press **up/down**.

- 3 Press **left** or **right** to select a TV programme.

- 4 Press the **Red** button on the remote control to set the highlighted programme for recording.

Note You can store up to 25 programmes for recording.

Copy TV programmes or files

A Copy TV programmes from hard disk

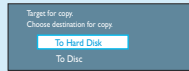
- 1 Insert a recordable DVD into the recorder.
- 2 Press **HDD LIST** on the remote control.
- 3 Select a title to copy and press the **Green** button on the remote control for **Copy**.
- 4 The making disc copy information appears. Press the **Green** button again to start copying.

Note It is not possible to copy the TV recordings to USB device.

B Copy files from USB

You can only copy the data files (MP3, WMA, DivX and JPEG) from your USB device to the recorder's hard disk drive or recordable DVD.

- 1 Insert your USB device to the USB port at the front panel of the recorder.
- 2 Press **HOME** and select **{ USB }**.
- 3 Use **left/right/up/down** keys to reach the file you want to copy.
- 4 Press the **Green** button for **{ Copy }**.



- 5 Select the destination for copying and press **OK**.

Note If select **{ To Disc }**, insert an empty recordable DVD into the recorder.

- 6 Press **OK** again to start copying.

C Copy files from Disc

Copy prohibited contents cannot be copied to this recorder.

- 1 Insert a CD/DVD into the recorder.
- 2 Press **HOME** and select **{ Disc Tray }**.
- 3 Use **left/right/up/down** keys to reach the title/file you want to copy.
- 4 Press the **Green** button for **{ Copy }**.



- 5 Select the destination for copying and press **OK**.

Note Only data files are able to copy to USB device.

- 6 Press **OK** again to start copying.

Need help?

User Manual

See the user manual that came with your Philips Recorder or AV Receiver

Online

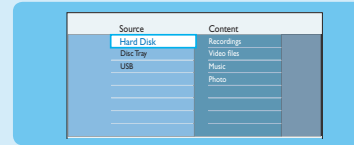
Register your product and get support at www.philips.com/welcome



Start playback

A Playback from hard disk

- 1 Press **HOME**.



- 2 Select **{ Hard Disk }** and press **right**.

- 3 Select the contents type and press **right**.

- 4 Use **left/right/up/down** keys to reach the title/file you want to play and press **right** to start playback.

B Playback from disc

- 1 Hold down **STOP** until the disc tray opens. Load a disc and close the disc tray.

- 2 Press **HOME** and select **{ Disc Tray }**.

- 3 Use **left/right/up/down** keys to reach the title/file you want to play and press **right** to start playback.

C Playback from USB device

- 1 Insert the USB device to the USB port.

- 2 Press **HOME** and select **{ USB }**.

- 3 Use **left/right/up/down** keys to reach the contents list.

- 4 Select the contents type and press **right**.

- 5 Select a data file (MP3, WMA, DivX and JPEG) and press **right** to start playback.

Quick Start Guide



- 1 Connect
- 2 Set up
- 3 Enjoy

What's in the box?

