

Register your product and get support at
www.philips.com/welcome

SPC I300NC

User manual



PHILIPS

Your WebCam

Congratulations on your purchase and welcome to Philips!

To fully benefit from the support that Philips offers, register your product at www.philips.com/welcome

What's in the box

Please check that the following items are packed in the Philips SPC1300NC box. They are provided to help you set up and use your Philips SPC1300NC.

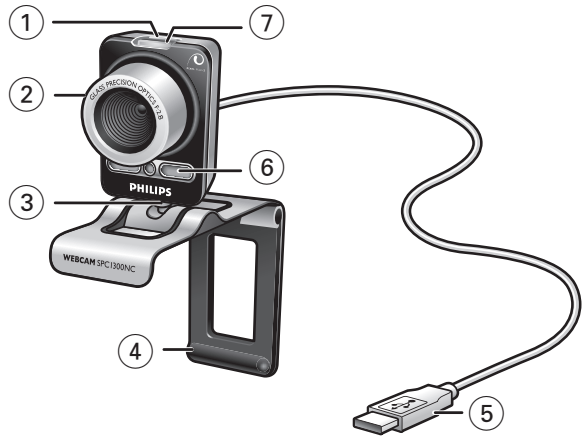


*Philips SPC1300NC
WebCam*



*Installation CD-ROM
including manual*

Legend of functions



1 Snapshot button

Enables you to take photos without using your mouse.

2 Focus ring

For manually adjusting the focus of the lens.

3 Rotating foot

For manually changing the vertical angle of the WebCam.

4 Clamp with rubber rims / camera foot

For attaching the WebCam to your (flat panel) PC monitor or laptop screen.

The clamp can be folded when the WebCam is placed on a desk or (large) desktop monitor.

5 USB connector

For connecting the WebCam to the USB port of the laptop or desktop PC.

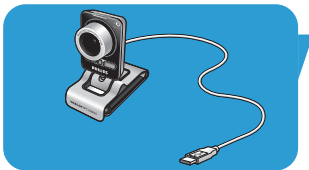
The WebCam will derive its power from the laptop or desktop PC when a USB connection is made.

6 Digital microphone

For adding voice and sound when video calling and video recording.

7 Power LED

Lights up blue when the WebCam is in use.



3	What's in the box?
4	Legend of functions
5	Contents
6	Welcome
7	Things you should know
7	Safety precautions
7	Copyright
8	Installation
8	Installing the WebCam software
10	Connecting the WebCam to your PC / laptop
11	WebCam settings
11	General settings
12	Video settings
15	Audio settings
16	Features settings
19	Operating the WebCam
19	VLounge
19	Selecting your WebCam
20	Capturing images / making video recordings
21	Instant messaging and Internet calling (video chatting, video calling and VOIP)
22	Motion detection
24	Broadcasting your videos over the Internet
25	Technical specifications
26	Important information
26	Disclaimer
26	FCC compliance
27	Environmental information
27	System requirements
27	Disclaimer of warranty
27	Limitations of damages

The Philips SPC1300NC WebCam you have just purchased is manufactured to the highest standards and will give you years of trouble-free use. Brilliant images and blazing colors, that's what you get with the SPC1300NC WebCam.

After installation, the new WebCam can be used for all sorts of applications, such as:

- **Video:** use the Philips SPC1300NC WebCam for video chatting and video calling. The WebCam works with Skype, Windows® Live Messenger, Yahoo! Messenger, AOL Messenger, QQ and other free instant messaging and VoIP (Voice over Internet Protocol) services;
- **Video e-mail / Video capture:** create your own video presentations, video mail, product demonstrations, training videos, Internet clips etc.;
- **Snapshot images:** use images in presentations, create postcards, or send them via e-mail.
- **Editing and special effects:** after recording the images you want with the Philips SPC1300NC WebCam, the images can be easily edited using image or video editing programs.

The following sections in this manual give a step-by-step description of the installation process and explain how to use the Philips SPC1300NC WebCam.

Please read the following instructions carefully, and retain them for future reference. It may be helpful to have the instructions for use for the PC at hand for reference.

Safety precautions

Observe the following guidelines to ensure that the WebCam will operate safely and to prevent defects.

- Do not use your WebCam in environments outside the following range: temperature: 0°C to 40°C, relative humidity: 45% ~ 85%.
- Do not use or store your WebCam in/under:
 - direct sunlight exposure;
 - very humid and dusty environment;
 - near any kind of heat sources.
- If your WebCam gets wet, dry it with soft cloth as soon as possible.
- If the lens is dirty, Do NOT touch the lens with your fingers.
- Clean the outside of the WebCam with a soft cloth.
- Do NOT use cleaning fluids based on alcohol, methylated spirit, ammonia, etc.
- Do NOT attempt to disassemble or repair your WebCam by yourself. Do not open the WebCam. In the event of technical difficulties return it to your Philips retailer.
- Do NOT use your WebCam in the water.
- Protect the WebCam from oil, vapour, steam, moisture, and dust.
- Never point the WebCam lens at the sun.

Copyright

Copyright© 2003 by Philips Consumer Electronics B.V. All rights reserved. No part of this publication may be reproduced, transmitted, transcribed, stored in a retrieval system or translated into any language or computer language, in any form or by any means, electronic, mechanical, magnetic, optical, chemical, manual or otherwise, without prior written permission from Philips. Brands and product names are trademarks or registered trademarks of their respective companies.

Installing the WebCam software

The software supplied only works on PCs with the operating systems Microsoft® Windows® XP and Vista.

Notes!

- Unplug all your USB devices (except USB keyboard and USB mouse) before you start.
- Do not plug in your WebCam yet. Run the Installation CD-ROM first.
- Have your Windows® CD-ROM at hand.

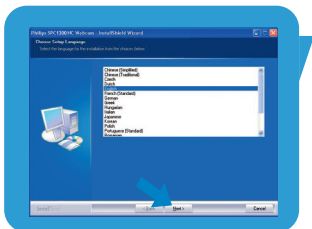


1 Place the installation CD-ROM in your PC's / laptop's CD-ROM / DVD drive.

> After a couple of seconds the 'Language selection' screen appears.

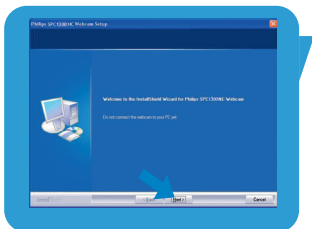
Note!

If the 'Language selection' screen does not appear automatically, open 'My computer', double click on the CD, then double click on the 'Setup.exe' icon.



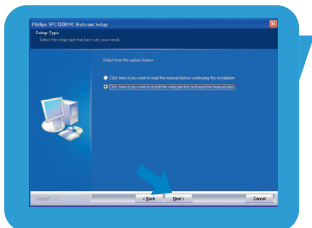
2 Select your language.

> Installation continues automatically.



> The 'Welcome' screen appears.

3 Click 'Next' to continue.



> The 'Manual' screen appears.

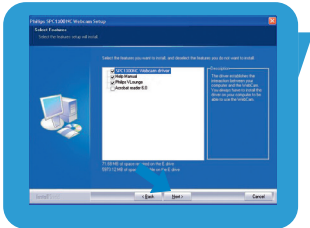
4 Select the first option if you wish to read the user manual before continuing installation. You can print out the manual so you will have it at hand during the rest of the installation process.

After you read or printed the user manual, continue installation by selecting the second option.

Or:

Select the second option if you wish to continue installation.

Click '**Next**' to continue.



> The 'Installation' screen appears. The items that can be installed are shown on the left side of the screen. An explanation of each item is given on the right side.

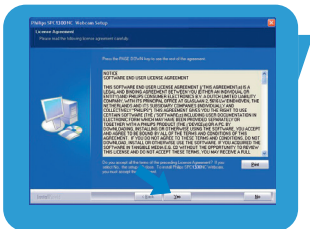
All required items are selected by default.

5 Click the '**Next**' button if you wish to install all items.

Or:

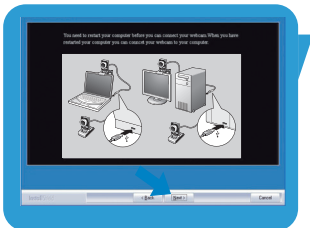
If there are certain items you do not wish to install, check the boxes before these items.

Select at least 'SPC1300NC WebCam Driver' and 'Philips VLounge'. Click the '**Next**' button.



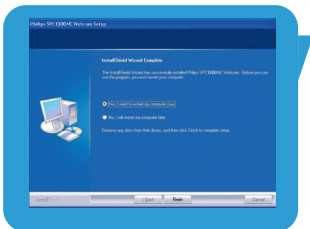
> The following software license agreement appears.

6 Click on '**Yes**' to continue the installation.



> The following screen appears.

7 Click '**Next**' to continue.



> The 'Reboot' screen appears.

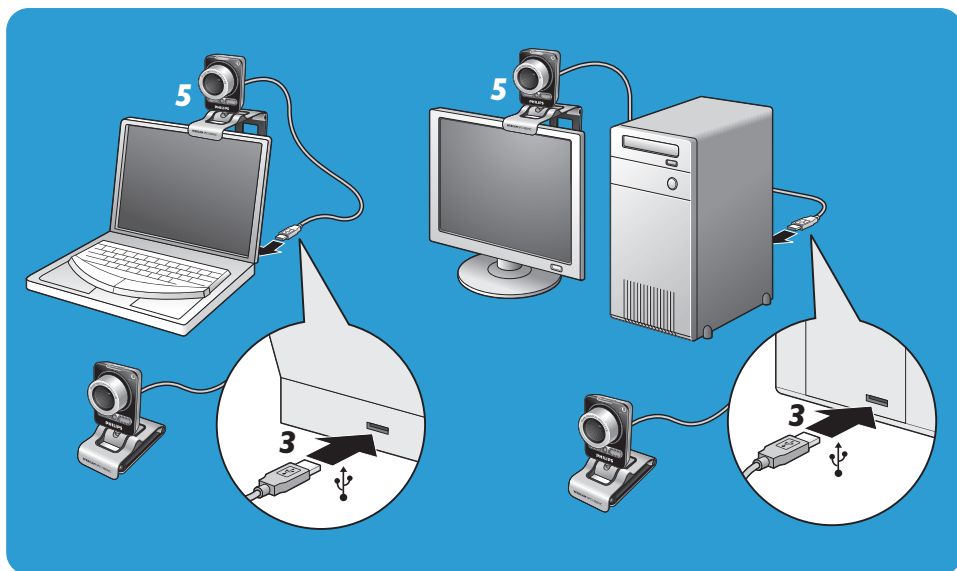
8 Select '**Yes**', then click '**Finish**' to restart your PC / laptop.

> The V(ideo)-Lounge desktop shortcut 'VLounge' will be installed after installation.

> Via VLounge you have access to all camera-related software. See 'Operating the WebCam'.

9 You can now connect your WebCam.

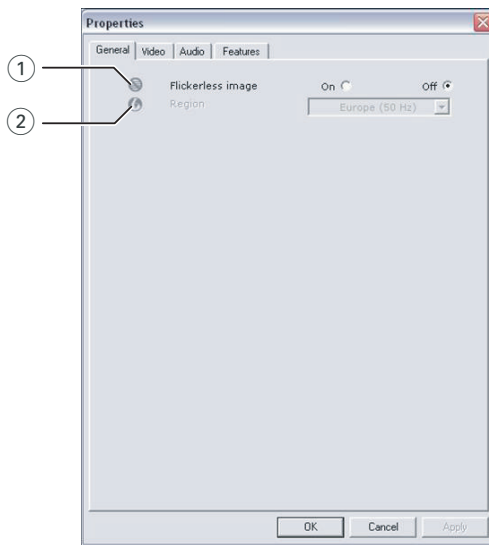
Connecting the WebCam to your PC / laptop



- 1** Be sure to run the installation CD first, before connecting the WebCam to the PC / laptop.
 - 2** Turn on the PC / laptop.
 - 3** Connect the USB connector of the USB cable to the USB port of the PC / laptop.
> *The WebCam will now derive its power from the PC / laptop.*
 - 4** Aim the webcam as required.
 - 5** Use the clamp and the two rubber rims to attach the WebCam to your (flat panel) PC monitor or laptop screen.
- Fold the clamp to place the WebCam on a desk or (large) desktop monitor.

- The Philips SPC1300NC video properties can be changed:
- from within an application;
 - by clicking the VProperty icon '📷' in the Windows taskbar, bottom right of your screen;
 - by selecting 'PC Camera Settings' under 'Preferences' in the VLounge selection screen;
 - by clicking the '📷' icon in the VLounge selection screen.

General settings



① Flickerless image

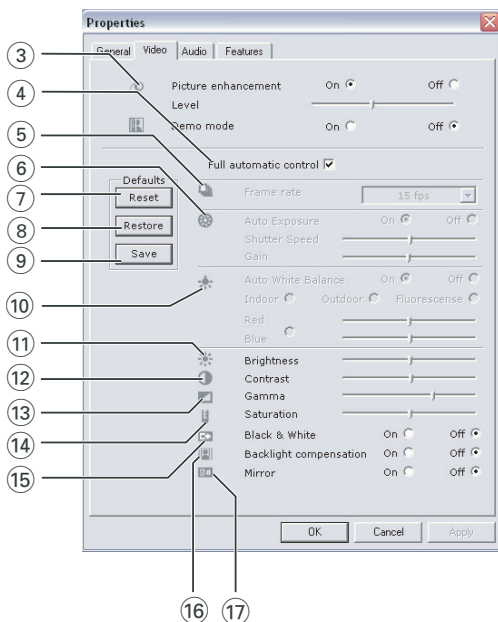
The Flickerless image option should only be used under flickering light conditions (e.g. fluorescent or neon lamps) to prevent flickering or strangely colored video images. If this option is used under normal lighting conditions the video image may be overexposed.

② Region

If you are using the Philips SPC1300NC in Europe, select '50 Hz' and if you are using the Philips SPC1300NC in North America, select '60 Hz'. For Asia this setting is dependent on the local mains output. E.g. for China, select '50 Hz' and for Taiwan, select '60 Hz'. For Japan the setting is region dependent.

Please check your local mains output to find the correct 'Region' setting.

Video settings

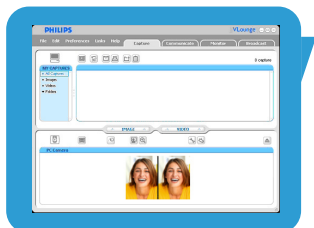


3 Picture enhancement

This option enables Philips patented Pixel Plus technology and helps you to enhance the image and video quality of the WebCam, giving you ultimate sharpness, vivid colors and smooth, natural motion. Use the slider to adjust the level of Pixel Plus, added to the live video of your WebCam.

Demo mode

Select 'Demo mode' to see a 'live preview' video image on your monitor so you can see the effect of the adjustment on your screen. The lower part of the screen will be split in two halves; on the left you see the current picture, on the right you see the enhanced picture.



④ Full automatic control: on/off

This full automatic control mode provides a very easy way to get the best out of your Philips SPC1300NC WebCam. Or you can choose to have maximum manual control over the WebCam settings by switching the full automatic control mode off. Full automatic control 'on' is the preferred setting for normal use.

Techniques active within full automatic control mode are:

- *Automatic exposure control* and automatic white balance control, to provide the best video source signal possible;
- *Automatic frame rate selection* for improved WebCam sensitivity in low light conditions.

⑤ Frame rate

You can use the scroll open menu to set the frame rate of the video you wish to capture. E.g. 30 fps means that the WebCam will capture video at 30 frames per second.

⑥ Auto Exposure

The exposure is the amount of light received by the sensor and is determined by how long the sensor is exposed to capture a snapshot or video frame. The result depends on the sensitivity of the sensor. The WebCam will find the optimal setting if you select the automatic exposure option.

Shutter speed

The shutter speed determines how long the camera shutter remains open as a picture is taken. The slower the shutter speed, the longer the exposure time. The shutter speed controls the total amount of light reaching the sensor. Use the slider to set the desired shutter speed.

Gain

In video, gain is the amount of white in a video picture. Use the slider to set the desired gain level.

⑦ Reset

Press this button if you would like to reset the WebCam settings to the default factory settings.

⑧ Restore

Press this button if you would like to restore your personal preferred settings.

⑨ Save

Press this button if you would like to save your personal preferred settings.

⑩ Auto White Balance

Most light sources are not 100% pure white but have a certain 'color temperature'. Normally our eyes compensate for lighting conditions with different color temperatures. If the automatic white balance is selected, the WebCam will look for a reference point which represents white. It will then calculate all other colors based on this white point and compensate the other colors accordingly, just like the human eye.

You can also select fixed settings for 'Indoor', 'Outdoor' and 'Fluorescence' conditions or use the 'Red' and 'Blue' sliders if you would like to set the WebCam according to your personal color temperature preferences.

⑪ Brightness

Brightness enables you to adjust the brightness of the displayed image or video to suit your own preference. Use the slider to find your preferred setting.

⑫ Contrast

Contrast enables you to control the ratio between dark and light according to your own preference. Use the slider to find your preferred setting.

⑬ Gamma

Gamma enables you to brighten dark areas within the displayed image or video and visualize more details without over-exposing already light areas. Use the slider to find your preferred setting.

⑭ Saturation

Saturation enables you to set the color reproduction from black and white to a full color image or video according to your own preference. Use the slider to find your preferred setting.

⑮ Black and white

The 'Black and white' checkbox is used to switch from color images to black and white and back.

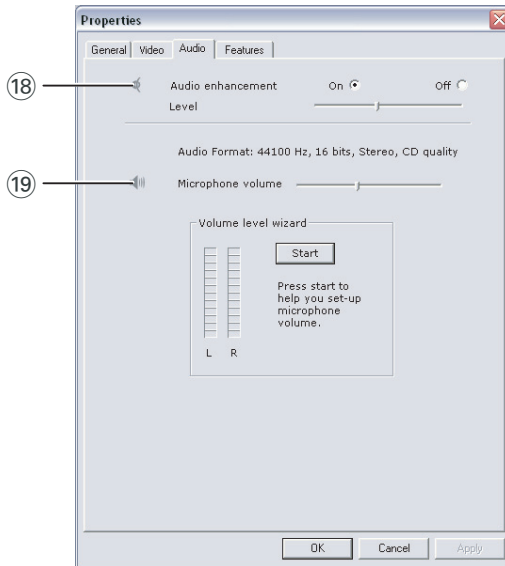
⑯ Backlight compensation

Turn on the backlight compensation to improve the image quality when you have a scene where the background has a high illumination level (for instance when you are sitting in front of a bright light).

17 Mirror

Clicking the 'Mirror Image' checkbox flips the image horizontally. You can use this feature when you want to use the Philips SPC1300NC and monitor as a mirror, or to take pictures of mirrored images.

Audio settings



18 Audio enhancement

This option helps you to enhance the audio quality of the WebCam in order to achieve optimal voice quality when video calling. Use the slider to adjust audio quality to your own personal preference.

19 Microphone volume

Volume slider

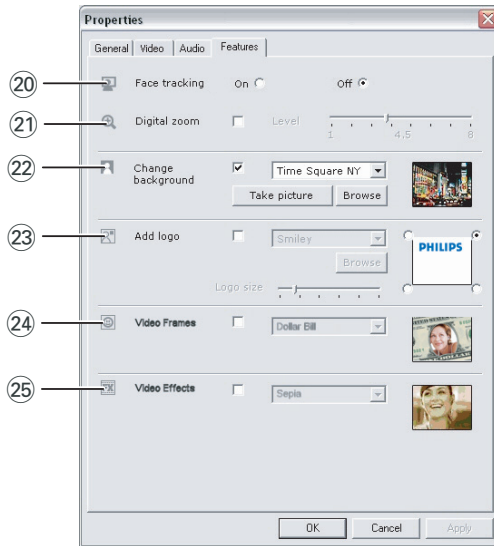
This slider provides manual control over the microphone.

Volume level wizard

Helps you set up the microphone volume level.

- Test the microphone volume level by clicking the '**Start**' button.

Features settings



20 Face tracking

If you enable the face tracking option, the WebCam will track your face. This gives you more convenience while video chatting, because you don't need to sit still during your video conversation.

21 Digital zoom

Use the digital zoom option to get an object closer. Digital zoom magnifies the pixels but not the actual image. It degrades image quality. Use the slider to set the desired zoom level.

22 Change background

This option enables you to replace the actual (real-time) background image by one from the WebCam background list or by one of your own pictures.

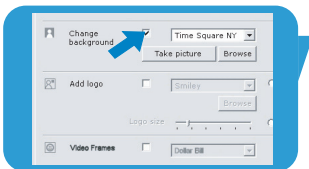
Note: When changing the background, make sure that:

- the actual background is static. There should be no movement within the WebCam field of view. Not even the movement of a curtain.
- there is sufficient light in the room. The better the lighting conditions, the better the performance of the 'Change background' feature.
- lighting conditions are not changed. Even a slight change in the lighting conditions will negatively influence the image.
- the colors of the cloths you wear are not the same as the background color.
- the WebCam does not move, even the slightest movement will negatively influence the image.

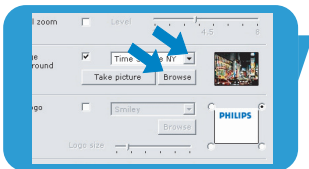
To change the background:

1 In the 'Features' menu, check the 'Change background' box.

- > The last selected background is shown in the preview window.
- > When the option is enabled for the first time, the first image from the WebCam background list is selected.



2 Use ▼ to browse through the WebCam background list and select a background.

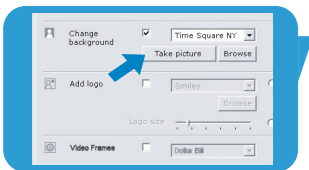


Or:

Use **'Browse'** to browse through your harddisk content and select one of your own pictures as background.

3 Make sure the background is properly lit and that there is no movement within the WebCam field of view, then click 'Take picture' and step out of the WebCam field of view.

- > Three seconds are now counted down and a picture of the actual background is taken. You will hear a shutter sound.
- > The actual background is now replaced by the selected background.



②③ Add logo

If you enable this option, a logo image will be placed in one of the corners of the Video stream. By default, the last used logo will be selected when the option is enabled. When the option is enabled for the first time, the Philips logo will be selected and shown in the upper right corner of the screen.

Select the desired corner for the logo to be placed in by checking the corresponding box in the 'Add logo' screen.

Use ▼ to browse through the WebCam logo list to select a logo.

Browse

Browse through your harddisk content to select one of your own logos.

Logo size

Use the slider to set the desired logo size.

②④ Video frames

This option enables you to place an overlay (frame) over the current video stream. By default, the last used frame will be used, when the option is enabled.

Use ▼ to browse through the WebCam frame list to select a frame.

②⑤ Video effects


This option enables you to add video effects to your video recordings and video calls. For example, you can display the video with canvas effect, distortion effect, embossing effect and many more.

By default, the last used effect will be applied to the video, when the option is enabled. When the option is enabled for the first time, the first effect from the video effects list will be selected.

Use ▼ to browse through the WebCam video effects list to select an effect.

V Lounge

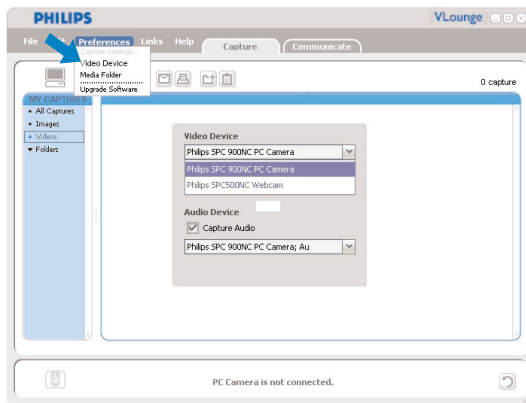
All applications can be accessed via the Philips V(ideo)-Lounge application. V Lounge is the central application for easy access to your Philips WebCam.

- **Start V Lounge:**
 - through the Windows QuickLaunch menu in your taskbar;
 - via the program group 'SPC I 300NC WebCam';
 - by clicking the V Lounge icon  on the desktop.

> The V Lounge application will now be initiated and the V Lounge selection screen appears.

Selecting your WebCam

When more than one WebCam is installed and connected to your PC / laptop, you can select the WebCam you wish to operate.

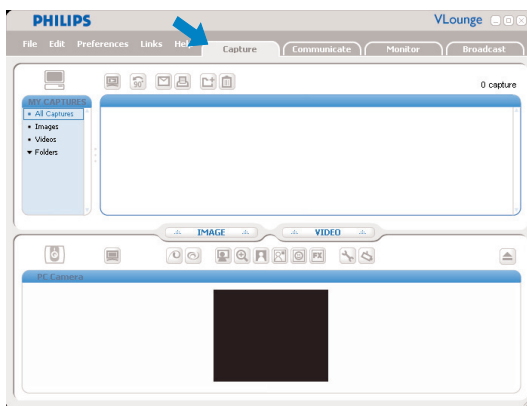


- 1 Open the **'Preferences'** menu.
- 2 Select **'Video Device'**.
 - > All WebCams connected are shown.
- 3 Select the WebCam you wish to operate.
- 4 Click the **'OK'** button.
 - > The V Lounge-selection screen for the selected WebCam appears.

Operating the WebCam

Capturing images / making video recordings

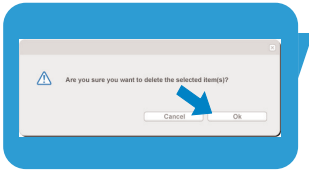
In the **'Capture'** menu you can capture images and make video recordings and transfer; preview, edit, e-mail, print and organise your photos and video recordings.



- Click the **'Capture'** tab to open the 'Capture' menu.
 - > The camera starts operating immediately.
 - > The total amount of captured items is shown above the content panel (top right).
- Click **'IMAGE'** to capture an image.
- Click **'VIDEO'** to start a video recording.
Click **'VIDEO'** again to stop recording.
- Click **'All Captures'** to display all captured items in the content panel.
- Click **'Images'**, **'Videos'** or **'Folders'** to display your captured images, video clips or folders containing captures in the content panel.
- Click **'[Maximize]**' to maximize the lower part of the screen and display the camera preview.
- Click **'[Maximize]**' to maximize the upper part of the screen and display your captured images and video recordings.
- Move your cursor onto a button to see a brief explanation of the button function.
- If you need assistance select **'Application Help'** in the **'Help'** menu.

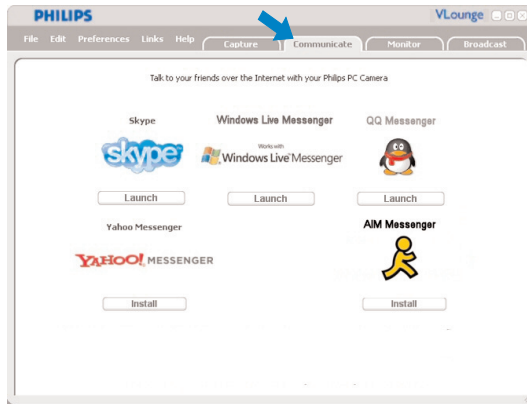
Deleting captured items

- 1 Select the items you wish to delete in the content panel or under 'Images', 'Videos' and 'Folders'.
- 2 Click '🗑️'.
> The following dialogue screen appears.
- 3 Click the **'OK'** button to delete the selected items.



Instant messaging and Internet calling (video chatting, video calling and VoIP)

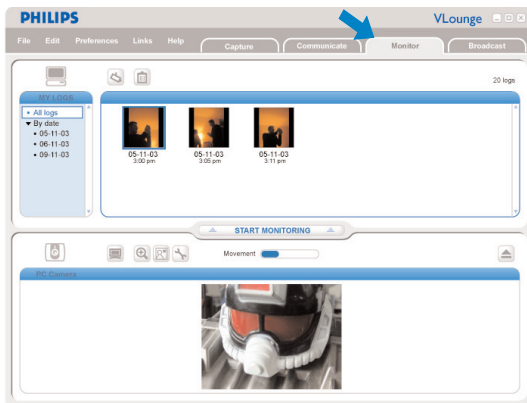
The Philips SPC1300NC WebCam works with *all* free instant messaging and VoIP (Voice over Internet Protocol) applications such as Skype, Windows® Live Messenger, Yahoo! Messenger, AOL Messenger and QQ.






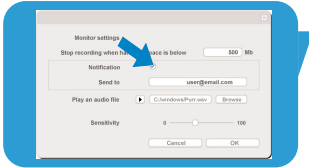
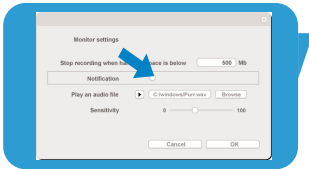
- 1 Click the **'Communicate'** tab to open the 'Communicate' menu.
> The available applications are shown by their icons.
 - 2 Click the appropriate **'Install'** button to download and install an application.
 - 3 Follow the on-screen instructions during downloading and installing.
 - 4 After installing an application, make the required WebCam settings *within* the application in order to be able to properly use the WebCam via the application.
 - 5 Click the appropriate **'Launch'** button to start an application.
- If you need assistance select **'Application Help'** in the **'Help'** menu.

Motion detection

In the **'Monitor'** menu you can set up the WebCam for motion detection and videolog recording.



- Click the **'Monitor'** tab to open the **'Monitor'** menu.
 - > The Monitor menu main screen appears.
 - > The total amount of videologs is shown above the content panel (top right).
 - > The **'Movement'** indicator () shows the amount of movement that is detected within the Webcam field of view.
- Click **'Start monitoring'** to start monitoring.
 - > If movement is detected within the field of view of the Webcam, recording starts automatically.
- Click **'Start monitoring'** again to stop monitoring.
- Click **'All logs'** to display all available logs in the content panel.
- Click **'By date'** to display the content of the various recording dates in the content panel.
- Click on a date to display the log(s) made on that date in the content panel.
- Click  to maximize the lower part of the screen and display the camera preview.
- Click  to maximize the upper part of the screen and display your videologs.
- Move your cursor onto a button to see a brief explanation of the button function.
- If you need assistance select **'Application Help'** in the **'Help'** menu.

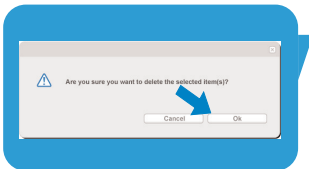


Monitor settings

- Click '📄' to access the 'Monitor settings' menu.
> The following dialogue screen appears.
- Enter the minimum memory capacity you wish to remain on your harddisk during recording.
> Recording stops automatically when harddisk space comes below the set amount of Mbs.
- Check the 'Notification' box if you wish a notification to be sent to an e-mail address when movement is detected.
- Enter the e-mail address you wish the notification to be sent to.
- Use the '**Browse**' button to select an audio file if you wish an audio file to start playing as soon as movement is detected.
- Use the sensitivity slider to set the desired sensitivity level for the WebCam detector. The sensitivity level determines the minimum amount of movement that will cause the WebCam to start recording.
The higher the sensitivity level, the sooner recording starts.
- Click the '**OK**' button to store your settings and close the dialogue box or click '✕' or the '**Cancel**' button to close the dialogue box without saving any settings.

Deleting videologs

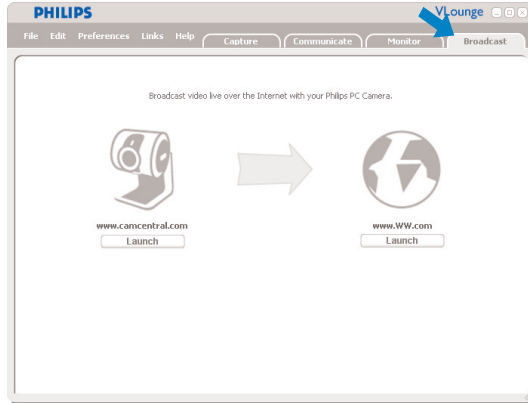
- 1 Select the logs you wish to delete in the content panel or under 'By date'.
- 2 Click '🗑️'.
- 3 Click the '**OK**' button to delete the selected videologs.



Operating the WebCam

Broadcasting your videos over the Internet

In the '**Broadcast**' menu you can select a website where you can broadcast your videos live.



- Click the '**Broadcast**' tab to open the 'Broadcast' menu.
- Select the desired website by clicking the corresponding '**Launch**' button.
- Follow the on-screen instructions for live broadcasting of your videos on the selected website.

Technical specifications

EN

Sensor	1.3MP CMOS
Real video resolution (Max.)	1.3MP
Real still image resolution (Max.)	1.3MP
Interpolated still image resolution (Max.)	5 MP
Frames per second.....	90 fps
F-number	2.8
Lens view angle	80 degrees
Minimum subject illumination	< 5 lux
Data format.....	1420, IYUV
Interfacing.....	UVC
USB cable length.....	2.1 m
Microphone.....	2 digital built-in omni directional microphones
Power	Supplied via USB cable
Voltage requirements.....	5V (— — —), 0.5A

Disclaimer

Philips makes no warranty of any kind with regard to this material, including, but not limited to, the implied warranties of merchantability and fitness for a particular purpose. Philips assumes no responsibility for any error that may appear in this document. Philips makes no commitment to update nor to keep current the information contained in this document.

FCC compliance

This device complies with Part 15 of the FCC Rules.

Operation is subject to the following two conditions:

- 1** this device may not cause harmful interference, and
- 2** this device must accept any interference received, including interference that may cause undesired operation.

Note!

This equipment has been tested and found to comply with the limits for a Class B digital device, pursuant to Part 15 of the FCC Rules. These limits are designed to provide reasonable protection against harmful interference in a residential installation. This equipment generates, uses and can radiate radio frequency energy and, if not installed and used in accordance with the instructions, may cause harmful interference to radio communications. However, there is no guarantee that interference will not occur in a particular installation. If this equipment does cause harmful interference to radio or television reception, which can be determined by turning the equipment off and on, the user is encouraged to try to correct the interference by one or more of the following measures:

- *Reorient or relocate the receiving antenna.*
- *Increase the separation between the equipment and receiver.*
- *Connect the equipment to an outlet on a circuit different from that to which the receiver is connected.*
- *Consult the dealer or an experienced radio/TV technician for help.*

Any unauthorized modification to this equipment could result in the revocation of the authorization to operate the equipment.

Environmental information

Disposal of your old product

Your product is designed and manufactured with high quality materials and components, which can be recycled and reused.



When this crossed-out wheeled bin symbol is attached to a product it means the product is covered by the European Directive 2002/96/EC

Please inform yourself about the local separate collection system for electrical and electronic products.

Please act according to your local rules and do not dispose of your old products with your normal household waste. The correct disposal of your old product will help prevent potential negative consequences for the environment and human health.

WARNING

Plastic bags can be dangerous. To avoid danger of suffocation, keep this bag away from babies and small children.

System requirements

- Microsoft® Windows® XP or Vista;
- Pentium® III, 800 Mhz or equivalent;
- 128MB RAM and 512 MB free hard disk space;
- One free USB port and CD-ROM or DVD drive.

Disclaimer of warranty

The software on the CD-ROM supplied is sold 'as is' and without warranties whether expressed or implied. Because of the various software and hardware environments into which this program may be put, no warranty of fitness for a particular purpose is offered.

Limitations of damages

The vendor will not be liable for any indirect, special, incidental or consequential damages (including damages for loss of business, loss of profits, or the like), whether based on breach of contract, tort (including negligence), product liability or otherwise, even if the vendor or its representatives have been advised of the possibility of such damages and even if a remedy set forth herein is found to have failed its essential purpose.

Where to go for information and support?

Please visit our website: www.philips.com for the latest product information.

Specifications are subject to change without notice.

Trademarks are the property of Koninklijke Philips Electronics N.V. or their respective owners.

2005 © Koninklijke Philips Electronics N.V. All rights reserved.

www.philips.com



PHILIPS