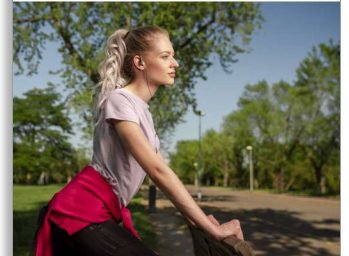




Philips  
Headphones

15mm drivers/open-back  
Earhook



SHS3300BK



## Extra bass

for powerful sound

Enjoy the bass beat sound of ear-clip headphones that designed for comfort, stability and performance.

### Music to your ears

- 27mm speaker driver delivers big sound performance
- Bass beat vents allow air movement for better sound
- Neodymium magnets enhance bass performance and sensitivity

### Made to fit you and your lifestyle

- Ear cushions improve wearing comfort and bass response
- Contoured earhook increase wearing comfort and stability
- Asymmetric cable keeps the cable out the way

### Always ready to go

- A 1.2m long cable that is ideal for outdoor use

# PHILIPS

Headphones  
15mm drivers/open-back Earhook

# Specifications

## Sound

- Acoustic system: open
- Diaphragm: Mylar dome
- Magnet type: Neodymium
- Type: Dynamic
- Voice coil: copper
- Frequency response: 12 - 22 000 Hz
- Sensitivity: 102 dB
- Speaker diameter: 15 mm
- Maximum power input: 100 mW
- Impedance: 32 ohm

## Connectivity

- Type of cable: copper
- Cable Connection: two-parallel, asymmetric
- Cable length: 1.2 m
- Connector: 3.5 mm
- Finishing of connector: gold-plated

## Convenience

- Wearing Style: Earhook

## Design

- Color: Black

## Packaging dimensions

- Packaging type: Blister
- Number of products included: 1

- Type of shelf placement: Both
- Packaging dimensions (W x H x D): 9.5 x 17 x 2.6 cm
- Gross weight: 0.0452 kg
- Nett weight: 0.0175 kg
- Tare weight: 0.0277 kg
- EAN: 69 51613 99170 1

## Outer Carton

- Number of consumer packagings: 24
- Outer carton (L x W x H): 35.4 x 19.2 x 23.2 cm
- Gross weight: 1.74 kg
- Nett weight: 0.42 kg
- Tare weight: 1.32 kg
- GTIN: 1 69 51613 99170 8

## Inner Carton

- Number of consumer packagings: 3
- Inner carton (L x W x H): 18.2 x 8.6 x 11 cm
- Gross weight: 0.1782 kg
- Nett weight: 0.0525 kg
- Tare weight: 0.1257 kg
- GTIN: 2 69 51613 99170 5

## Dimensions

- Product dimensions (WxDxH): 3.5 cm\*1.8 cm\*6.1 cm
- Weight: 0.0175 kg

SHS3300BK/10

# Highlights

## 27 mm speaker driver

Compact for wearing comfort yet big enough to deliver crisp, powerful sound, the 27 mm speaker driver is a perfect size for non-distorted listening enjoyment.

## Bass Beat vents

Bass beat vents allow air movement for better sound with a deep rich bass.

## Comfort ear cushions

The special shape and luxurious materials used for the ear cushions of these Philips headphones ensure a perfect fit for maximum comfort. They prevent audio leakage and enhance bass performance too. The ear cushions are shaped in such a way that they perfectly align with the area around a person's ear.

## Contoured earhook

The earhook stays put behind your ear even when you're on the move, keeping the earphone comfortably in place and sounding great. It's the part contacting the back of your ears and keep the headphones on your ears.

## Neodymium magnets

Neodymium is the best material for producing a strong magnetic field for greater sensitivity in a voice coil, better bass response and higher overall sound quality.

## Asymmetric cabling system

This simple yet highly effective solution to cable tangling works effectively by enabling you to hang the cable behind your neck instead of under your chin.

## 1.2m cable

The ideal cable length to give you the freedom to put your audio device where you want.



Issue date 2022-04-29

Version: 3.0.6

12 NC: 8670 001 30829  
EAN: 69 51613 99170 1

© 2022 Koninklijke Philips N.V.  
All Rights reserved.

Specifications are subject to change without notice.  
Trademarks are the property of Koninklijke Philips N.V.  
or their respective owners.

[www.philips.com](http://www.philips.com)