

Philips
Multimedia Speakers 2.1

SPDTM bass port
2.75" Satellite drive
5.25" Subwoofer
120W



SPA7355

PC speaker with powerful, rich sound

Unparalleled listening experience

50W output supported by SPD™ patented bass port technology gives deep, rounded tones with less distortion with this SPA7355/12. The 2-way tweeter + woofer design produces both high and low to mid-range frequencies, maximizing output.

Rich, complex sound

- SPD™ innovative bass port technology for deep, rounded tones
- 50W RMS total output power
- 2-way tweeter + woofer design
- Mylar material tweeter for high definition sound
- PP driver material
- Well damped driver reduces vibration and sound distortion

Contemporary design

- Attractive high gloss finish

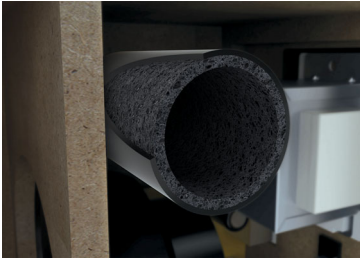
Simplicity

- Convenient aux-in and headphone out on front of speaker
- Easy volume control on satellite
- Compatible with any media

PHILIPS

Highlights

SPD™ technology



Philips Sound Purification Duct (SPD) bass port technology delivers the deep, pure tones of the original bass sound. Using an SPD foam material to process the inner surface of the bass pipe, the special acoustic damping invented by Philips reduces noise turbulence and stabilizes the tuning frequency. Philips technical and consumer tests confirm this buffer provides less colored, purer quality bass.

2-way speaker system



A dual-range speaker with two drivers produces high frequencies from the tweeter and low and mid-range frequencies from the woofer. This maximizes output with a more balanced sound than that from the commonly used one-way structure, where a single driver has to produce all the frequencies. So you can enjoy better acoustics with clear vocals and high tones along with solid bass, and all for a very competitive price with this latest Philips range of speakers.

Mylar tweeter



The unique Mylar material used in the tweeters ensures incredible sound definition. The full range of

high frequencies is perfectly reproduced, so music comes to life and movies sound like they were meant to. An integral part of the 2-way design, the tweeter improves high frequencies resulting in cleaner, more spacious and more accurate sound in tandem with the woofer. Improved clarity means you can identify all the different elements in the music. Listen to the individual instruments, hear the vocals more clearly, enjoy your music in refreshing detail.

PP driver material

The polypropylene (PP) material in the driver, which is soft, makes for better high frequency sounds. It can help rolling out and produces a purer sound with better clarity and balance. Easier to integrate with the tweeter, the use of this lightweight material results in less vibration.

AUX-in and headphone out



Now you can enjoy your favorite music and entertainment even easier and more conveniently, via the aux-in and headphone out jack on the front of these speakers. Usually, if you want to connect another device other than your PC you have to unplug the 3.5mm jack from the computer and that is not always expedient. But with the aux-in and headphone out connections on front you can quickly and easily listen to music straight from almost any device.

Well damped driver

A single speaker driver normally incurs a specific frequency division vibration near the edge of the diaphragm, often resulting in some sound distortion. This way to overcome this problem by using Mylar, a uniform monomer and a much lighter material that is more usually used, around the driver cone. Surrounding the cone in a perfectly symmetrical ring, the resulting damping effect suppresses the asynchronous vibration, resulting in a more balanced and natural sound.

Specifications

Audio systems

- Output power in total: 50W
- Power: 220V 50Hz
- Frequency range: 20Hz-20kHz
- Input impedance: 20Kohm
- Signal/Noise ratio: >75dB
- THD: <1%

Audio systems L/R channels

- Rated output power: 12.5W x2
- Audio power amplifier: Class-AB Amplifier
- Channel separation: >45dB
- Input sensitivity: 320mV

Subwoofer audio systems

- Rated output power: 25W
- audio power amplifier: Class-AB Amplifier (BTL)
- Input sensitivity: 110mV

Left/Right speakers

- Speaker driver: 2.75" full range + 1" mylar tweeter
- Driver power range: 1-30Wx2
- Frequency range: 80Hz-20kHz
- Nominal impedance: 4ohm
- Sensitivity: 86dB(2.83V/1m)

Subwoofer speaker

- Speaker driver: 5.25"
- Driver power range: 2-120W
- Frequency range: 45Hz-200Hz
- Nominal impedance: 4ohm
- Sensitivity: 88dB(2.83V/1m)

Connectivity

- Cable length: Power cord, audio cable, satellite cable : 1.3M
- Connector: 3.5 mm stereo

Power

- Power LED indicator: Amber

Packaging content

- Subwoofer
- Quick installation guide
- Remote Control: Wired
- 3.5 mm stereo line cable: Fixed
- Number of satellites: 2

Packaging dimensions

- Packaging dimensions (W x H x D): 39.3 x 26.5 x 28.3 cm
- EAN: 87 12581 64433 8
- Gross weight: 4.2 kg
- Nett weight: 3.9 kg
- Number of products included: 1
- Packaging type: Carton
- Tare weight: 0.3 kg
- Type of shelf placement: Laying

Product dimensions

- Product dimensions (W x H x D): 21.7 x 22.5 x 22.5 cm
- Weight: 2.924 kg

Outer Carton

- Gross weight: 9 kg
- GTIN: 1 87 12581 64433 5
- Outer carton (L x W x H): 39.5 x 29.5 x 54.6 cm
- Nett weight: 7.8 kg
- Number of consumer packagings: 2
- Tare weight: 1.2 kg



Issue date 2014-08-09

Version: 3.1.4

12 NC: 8670 000 90227
EAN: 87 12581 64433 8

© 2014 Koninklijke Philips N.V.
All Rights reserved.

Specifications are subject to change without notice.
Trademarks are the property of Koninklijke Philips N.V.
or their respective owners.

www.philips.com