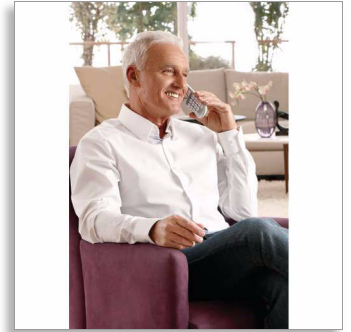


Philips SoClear
Cordless phone with
answering machine

3000 series
Silver



XL3952S

Comfortable and simple

Easy to see, easy to hear

So comfortable, so user-friendly: this phone features extra-large buttons and a big screen—to make calls easy. And with extra loud sound capabilities for easy listening, as well as an in-built answering machine, it makes it all so simple.

Hear everything loud and clear

- Extra loud sound for clear voice reproduction
- Handset speakerphone allows you to talk hands-free
- Hearing aid compatible - reduces unwanted noise
- Optimised antenna layout for great reception in any room

Smart, simple and easy to use

- Up to 30 min. message on your answering machine
- Extra loud ringer, so you never miss a call
- Large display and easy to read characters
- Instantly call your loved ones via speed-dial keys
- Ultimate convenience through easy setup
- Up to 17 hours of talk time

Eco-conscious product

- 60% reduction of radiation when ECO mode is activated
- Low power consumption: < 0.65 W in standby mode

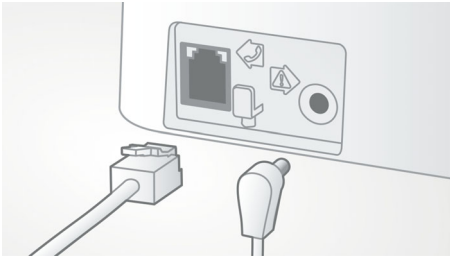


asimpleswitch.com

PHILIPS

Highlights

Easy setup



Ultimate convenience through easy set up.
Simplified installation - Plug and Play product

Extra loud ringer

Extra loud ringer, so you never miss a call

Extra loud sound



Extra loud sound for clear voice reproduction

Handset speakerphone



Hands-free mode uses a built-in loudspeaker to amplify the voice of the caller, allowing you to speak and listen during a call without holding the phone to your ear. This is especially useful if you want to share the call with others or simply multitask.

Hearing aid compatible



Hearing aid compatible - reduces unwanted noise

Instant calling



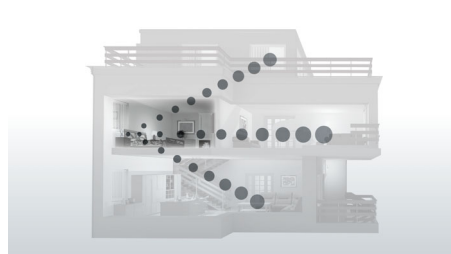
Instantly call your loved ones via speed-dial keys

Large, easy to read display



Large display and easy to read characters

Optimised antenna layout



Our optimised antenna layout ensures strong and stable reception, even in areas of the

house where cordless transmission is difficult. Now you can take a call wherever you are in the house, and enjoy a long, uninterrupted conversation even as you walk around.

Up to 17 hours talk time



The phone can support up to 17 hours conversation on a single charge.

ECO mode



60% reduction of radiation when ECO mode is activated



Philips Green Logo

Philips Green Products can reduce costs, energy consumption and CO2 emissions. How? They offer a significant environmental improvement in one or more of the Philips Green Focal Areas — Energy efficiency, Packaging, Hazardous substances, Weight, Recycling and disposal and Lifetime reliability.

Specifications

Sound

- Hearing Aid Compatible
- Volume control on handset
- Ringtones on handset: 10 polyphonic

Picture/Display

- Display size: 4.8 cm/1.9"
- Display type: FSTN — dot matrix
- Backlight: Yes
- Backlight colour: Soft Amber

Answering Machine

- Recording time capacity: up to 30 minutes
- Pre-recorded OGM
- Message counter on base: LED (Soft Amber)
- Answering machine control: from base and handset
- Loud speaker on base

Convenience

- Menu structure in the handset: List Menu
- Speakerphone — talk hands-free
- Personalisation: Silence mode
- Signal strength indicator: 3- bar indicator
- Battery level indicator: 3- bar battery icon
- Intercom — multiple handsets
- Date/Time display
- Alarm Clock
- Battery charge indication
- Programmable hot keys: Key 1 and 2, and M1/2/3
- Call Management: Call Waiting*, Caller ID*, Microphone mute, Missed Calls, Received Calls
- Key tone on/off
- Auto hang up
- Multi-base capability: 1
- Multi-handset capability: Up to 4
- Number of keys: 23
- Backlit keypad: Soft Amber
- Base Station keys: Paging key
- Up to 17 hrs talk time
- Up to 300 hrs standby time

- Charge time: 8 hours
- Line cord length: 1.8 m
- Power cord length: 1.8 m
- Range: Open field <300 m; indoor <50 m

Memory Capacity

- Phonebook: 100 names and numbers + 2 direct access memories
- Redial List Capacity: 20 entries
- Call log entries: 50 entries
- Phonebook store in the base

Power

- Battery capacity: 650 mAh
- Battery type: AAA NiMH Rechargeable
- Mains power: AC 100-240 V ~50/60 Hz

Security

- Transmission encryption: Yes

Network Features

- Compatible: GAP

SAR Value

- Philips handsets: <0.1 W/kg

Eco Design

- EcoMode: automatic and manual

Packaging dimensions

- Packaging type: Carton
- Number of products included: 1
- Type of shelf placement: Laying
- Packaging dimensions (W x H x D): 19.7 x 15.7 x 11.9 cm
- Gross weight: 0.897 kg
- Net weight: 0.746 kg
- Tare weight: 0.151 kg
- EAN: 87 12581 62664 8



Issue date 2015-02-02

Version: 5.3.4

12 NC: 8670 000 85171
EAN: 87 12581 62664 8

© 2015 Koninklijke Philips N.V.
All Rights reserved.

Specifications are subject to change without notice.
Trademarks are the property of Koninklijke Philips N.V.
or their respective owners.

www.philips.com