

Always there to help you

Register your product and get support at www.philips.com/welcome

AD385/98



EN Short User Manual

ZH-TW 短版使用手冊

PHILIPS

Before using your product, read all accompanying safety information.
使用前請閱讀所有相關安全信息。

The speaker beeps twice when it successfully pairs with a bluetooth device.
如果連接成功，音樂基座將發出兩聲蜂鳴音。

The speaker beeps twice when it successfully pairs with a bluetooth device.
如果連接成功，音樂基座將發出兩聲蜂鳴音。



iPod nano
7th generation
16GB

iPod touch
5th generation
32GB 64GB

iPhone 5
16GB 32GB 64GB

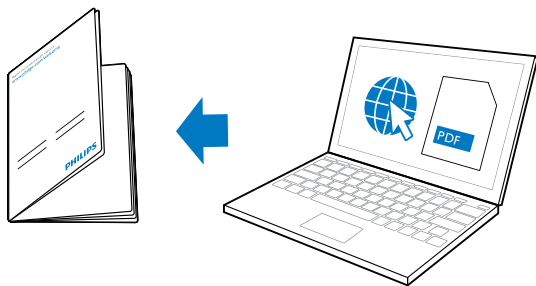
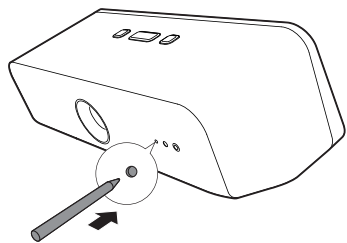
You can only charge your iPod/iPhone when the docking speaker is powered by AC supply.
音樂基座只可以通過交流電為iPod/iPhone充電。

Specifications are subject to change without notice.
© 2013 Koninklijke Philips Electronics N.V.
All rights reserved.

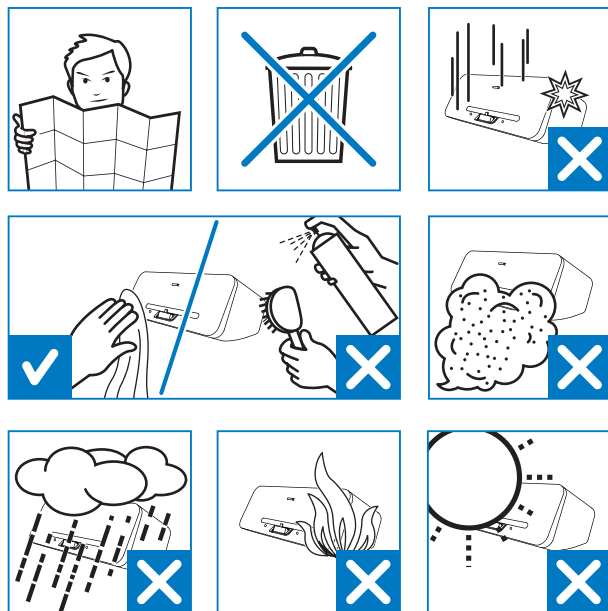
AD385_98_short UM_V1.0



! Reset / 重置



To get the detailed instructions for use, visit www.philips.com/support.
請訪問 www.philips.com/support 獲得詳細的使用幫助。



EN

Read and understand all instructions before you use this product. If damage is caused by failure to follow the instructions, the warranty does not apply.

Safety

! Warning

- Never remove the casing of this apparatus.
- Never lubricate any part of this apparatus.
- Never look into the laser beam inside this apparatus.
- Never place this apparatus on other electrical equipment.
- Keep this apparatus away from direct sunlight, naked flames or heat.
- Ensure that you always have easy access to the power cord, plug or adaptor to disconnect the apparatus from the power.

- The device shall not be exposed to dripping or splashing.
- Do not place any source of danger on the device (e.g. liquid filled objects, lit candles).
- Where the plug of the Direct Plug-in Adapter is used as the disconnect device, the disconnect device shall remain readily operable.
- Make sure that there is enough free space around the product for ventilation.
- Only use attachments/accessories specified by the manufacturer.
- The batteries should not be exposed to excessive heat such as sunshine, fire or the like.
- Danger of explosion if battery is incorrectly replaced. Replace only with the same or equivalent type.
- Only use power supplies listed in the user manual.

Notice

Any changes or modifications made to this device that are not expressly approved by Philips Consumer Lifestyle may void the user's authority to operate the equipment.



Your product is designed and manufactured with high quality materials and components, which can be recycled and reused.



When this crossed-out wheeled bin symbol is attached to a product it means that the product is covered by the European Directive 2002/96/EC. Please inform yourself about the local separate collection system for electrical and electronic products. Please act according to your local rules and do not dispose of your old products with your normal household waste. Correct disposal of your old product helps to prevent potential negative consequences for the environment and human health.



Your product contains batteries covered by the European Directive 2006/66/EC, which cannot be disposed with normal household waste. Please inform yourself about the local rules on separate collection of batteries because correct disposal helps to prevent negative consequences for the environmental and human health.

Environmental information

All unnecessary packaging has been omitted. We have tried to make the packaging easy to separate into three materials: cardboard (box), polystyrene foam (buffer) and polyethylene (bags, protective foam sheet.)

Your system consists of materials which can be recycled and reused if disassembled by a specialized company. Please observe the local regulations regarding the disposal of packaging materials, exhausted batteries and old equipment.

Be responsible Respect copyrights

The making of unauthorized copies of copy-protected material, including computer programs, files, broadcasts and sound recordings, may be an infringement of copyrights and constitute a criminal offence. This equipment should not be used for such purposes.



"Made for iPod" and "Made for iPhone" mean that an electronic accessory has been designed to connect specifically to iPod or iPhone respectively, and has been certified by the developer to meet Apple performance standards. Apple is not responsible for the operation of this device or its compliance with safety and regulatory standards. Please note that the use of this accessory with iPod or iPhone may affect wireless performance. iPod and iPhone are trademarks of Apple Inc., registered in the U.S. and other countries.

Specifications

Rated Output Power	2 x 4 W RMS
Standard	Bluetooth Standard Version 2.1+EDR
Frequency band	2.402 ~ 2.480 GHzISM Band
Range	10 m (free space)
Power supply - AC Power	Model: (KTEC)KSASB0241200150DS ; Input: 100-240 V ~50/60Hz, 0.6A; Output: 12 V \approx 1.5 A
- Battery	Li-ion polymer internal rechargeable battery 7.4V/10WH
Operation Power Consumption	<10.5 W
Standby Power Consumption	<0.5 W
Max. load for iPod/iPhone	5 V \approx 1 A
Dimensions - Main Unit (W x H x D)	300 x 119 x 164 mm
Weight - Main Unit	1.45 kg
Operation temperature and humidity	0°C to 45°C, 5% to 90% Humidity for all climates.
Storage temperature and humidity	-40°C to 70°C, 5% to 95%

! Note

- The type plate is located on the bottom of the apparatus.

ZH-TW

在您開始使用本產品之前，請先閱讀並瞭解所有指示。未遵守指示而造成的損壞，恕不在保固責任範圍內。

安全

! 警告

- 請勿打開產品外殼。
- 請勿在本產品的任何部位使用潤滑油。
- 請勿直視本產品內的雷射光。
- 請勿將本產品放置在其他電器上。
- 請勿讓本產品直接曝曬於陽光下，或靠近未隔離的火爐或熱源。
- 請確認電源線、插頭或變壓器位於容易取得的地方，以方便中斷產品電源。

- 請勿將裝置置於滴水或灑水的環境。
- 請勿在裝置上放置危險物品 (如盛裝液體的容器、點燃的蠟燭等)。
- 直接插入式電源變壓器的插頭作為中斷連接裝置時，中斷連接裝置應保持隨時可操作。
- 請確認產品周圍有足夠空間以保持通風。
- 僅使用原廠指定的附件/配件。
- 請勿將電池暴露在過熱溫度下，例如日照、火焰等。
- 電池安裝不正確會有爆炸危險。祇能用相同或相當的型號更換。
- 限用使用手冊上所列的電源供應器。

注意

未經 Philips Consumer Lifestyle 明示核可即變更或修改本裝置，可能導致使用者操作本設備的授權失效。



您的產品是使用高品質材質和元件所設計製造，可回收和重複使用。



當產品附有打叉的附輪回收標識時，代表產品適用於歐洲指令 (European Directive) 2002/96/EC。請取得當地電子產品分類收集系統的相關資訊。根據當地法規處理，請勿將廢棄產品當作一般家庭垃圾棄置。正確處理廢棄產品有助於避免對環境和人類健康帶來潛在的負面影響。



您的產品包括了符合歐洲指令 (European Directive) 2006/66/EC 的電池，不得與其他一般家用廢棄物一併丟棄。請注意有關電池分類收集的當地法規，正確處理廢棄產品有助於避免對環境和人類健康帶來負面影響。
環境保護資訊

所有非必要之包裝材料均已捨棄。我們嘗試讓包裝可以輕易拆解成三種材質：厚紙板 (外盒)、聚苯乙烯泡棉 (防震) 以及聚乙烯 (包裝袋、保護性泡棉膠紙)。產品本身含有可回收並重複使用的材質，但是需由專業公司拆解。請根據各地法規丟棄包裝材料、廢電池和舊機器。

Be responsible Respect copyrights

製作受版權保護之未經授權的資料，包括電腦程式、檔案、廣播及聲音錄製品，可能構成侵害版權之行為並引起刑事訴訟。本設備不應用於此類用途。



「iPod 專用」和「iPhone 專用」意指該電子配件產品專為連接 iPod 或 iPhone 而設計，通過開發者認證，並符合 Apple 效能標準。對該裝置操作或相容性方面的安全與法規標準，Apple 概不負責。請注意，本配件與 iPod 或 iPhone 搭配使用可能會影響無線效能。

iPod 和 iPhone 是 Apple Inc. 在美國及其他國家的註冊商標。

備註

- 機型牌位於產品底部。

規格

額定輸出功率	2 X 3 W RMS
標準	藍牙標準版本 2.1 及 EDR
頻率波段	2.402 ~ 2.480 GHzISM 波段
範圍	10 公尺 (自由空間)
電源供應 - AC 電源 - 電池	型號： (KTEC)KSASB0241200150DS ; 輸入：約 100-240 伏， 50/60 赫茲，0.6 安； 輸出：12 伏 1.5 安 7.4V/10WH 內置鋰電池
操作功耗	<10.5 W
待機耗電量	< 0.5 W
最大電荷 (iPod/iPhone)	5 V \approx 1 A
尺寸 - 主裝置 (寬 x 高 x 深)	300 x 119 x 164 公釐
重量 - 主裝置	1.45 千克
操作溫度和濕度	0° C 至 45° C，5% 至 90% 的濕度為所有的氣候。
貯藏溫度和濕度	-40° C 至 70° C， 5% 至 95%

低功率電波輻射性電機管理辦法

第十二條 經型式認證合格之低功率射頻電機，非經許可，公司、商號或

使用者均不得擅自變更頻率、加大功率或變更原設計之特性及功能。

第十四條 低功率射頻電機之使用不得影響飛航安全及干擾合法通信；經

發現有干擾現象時，應立即停用，並改善至無干擾時方得繼續

使用。