

Quick Start Guide



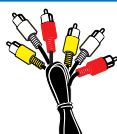
Step A *Connect*

Step B *Setup*

Step C *Enjoy*

What's in the Box?

You should find these items upon opening the box.



AV cables (Y/W/R)

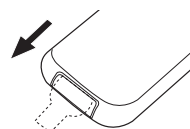


Quick Start Guide



Remote control with battery

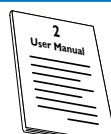
Remove the plastic protective sheet



DIN cable



FM antenna



User Manual

PHILIPS

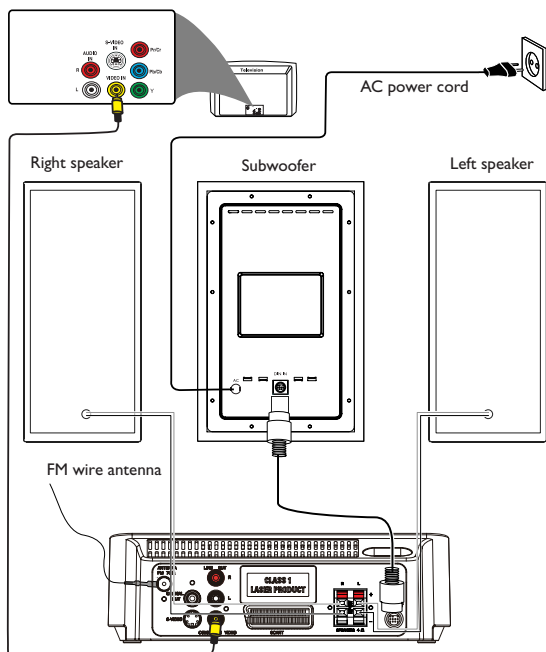
Step A **Connect**

Important!

This set can only be operated after the supplied DIN cable has been connected.

Tip

See the User Manual for other TV connection options.



1

Connect the speaker cables.

2

Connect the supplied DIN cable to DVD player's DIN jack and the subwoofer's DIN jack.

3

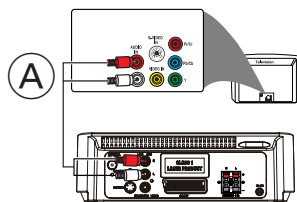
Connect the FM antenna.

4

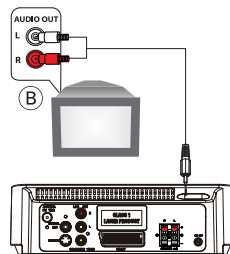
Connect the composite video cable (yellow, supplied) to a TV.

5

Connect the power cords of the system and TV.



A To hear the sound of this DVD Player through your TV, use the audio cables (white/red, supplied) to connect **LINE OUT (L/R)** jacks of the DVD Player to the corresponding **AUDIO IN** jacks on the TV.



B To listen to TV through this system, use a cinch cable (not supplied) to connect **AUX IN** jack (3.5mm) to the corresponding **AUDIO OUT** jacks on the TV set.

Step B **Setup**

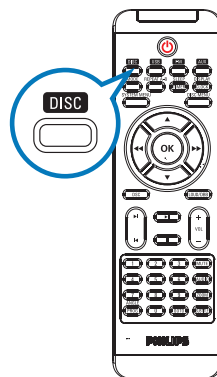
Setting up the TV

1

Press **SOURCE** (**DISC** on the remote control) to select disc source.

2

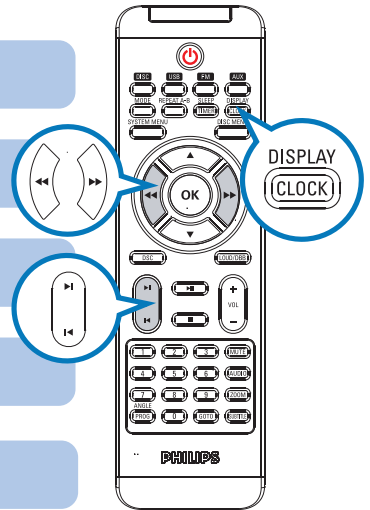
Turn on the TV and set it to the correct Video In channel.



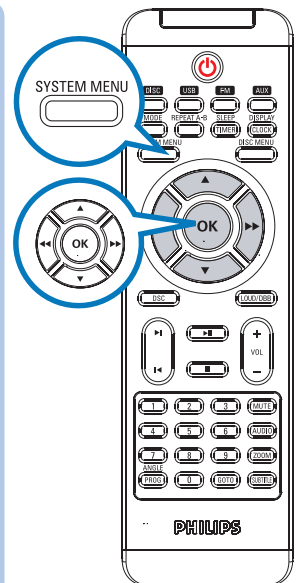
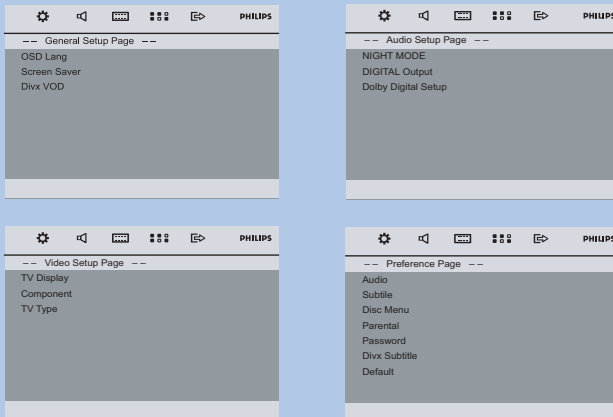
Step B Setup

Setting the clock

- 1 In standby mode, press and hold **DISPLAY/CLOCK**. The clock digits flash on the display panel.
- 2 Press **TUNING** <</> (or <</> on the remote control) to set the hours.
- 3 Press </> to set the minutes.
- 4 Press **PROG** to select between 12 hour and 24 hour display.
- 5 Press **DISPLAY/CLOCK** again to store the setting.



Setting system menu options



Tip

See chapters "Getting Started" and "System Menu Options" in the User Manual for detailed descriptions.

Playing a disc



1 Press **OPEN•CLOSE** to open the disc door and load in a disc, then press the same button again to close the disc door.
 → Make sure the label side of the disc is facing up.

2 Playback will start automatically. If not press **▶▶**.

3 To stop playback, press **■**.

Programming and tuning to radio stations

1 Press **SOURCE** (**FM** on the remote control) to select tuner source.

2 Press **PROG** for more than two seconds to program all available stations in order of waveband.

3 Press **◀/▶** until the desired preset station is displayed.

Tip

Detailed playback features and additional functions are described in the accompany owner's manual.

Playing a USB mass storage device

With the Hi-Fi system, you can use USB flash memory (USB 2.0 or USB1.1), USB flash players (USB 2.0 or USB1.1), memory cards (requires an additional card reader to work with this Hi-Fi system).

1 Insert the USB device's USB plug into the socket on the front panel of the main set.

2 Press **SOURCE** (or **USB** on the remote control) once or more to select **USB**.

3 Play the USB's audio files as you do with the albums/tracks on a CD.

