

Always there to help you
Register your product and get support at
www.philips.com/support

Question?
Contact
Philips



Short User Manual

AJ6200DBZ

PHILIPS



Specifications are subject to change without notice.
2015 © Gibson Innovations Limited. All rights reserved.
This product has been manufactured by, and is sold under the responsibility of Gibson Innovations Ltd., and Gibson Innovations Ltd. is the warrantor in relation to this product. Philips and the Philips Shield Emblem are registered trademarks of Koninklijke Philips N.V. and are used under license from Koninklijke Philips N.V.

AJ6200DBZ_98_SUM_V2.0

Safety

Warning

- Never remove the casing of this product.
- Never lubricate any part of this product.
- Never place this product on other electrical equipment.
- Keep this product away from direct sunlight, naked flames or heat.
- Make sure that you always have easy access to the power cord, plug or adaptor to disconnect the product from the power.

- Make sure that there is enough free space around the product for ventilation.
- The product shall not be exposed to dripping or splashing.
- Do not place any sources of danger on the product (e.g. liquid filled objects, lighted candles).
- Where the plug of the Direct Plug-in Adapter is used as the disconnect device, the disconnect device shall remain readily operable.
- Only use power supplies listed in the user manual.
- Battery usage CAUTION – To prevent battery leakage which may result in bodily injury, property damage, or damage to the product:
 - Install all batteries correctly, + and - as marked on the unit.
 - Do not mix batteries (old and new or carbon and alkaline, etc.).
 - Remove batteries when the unit is not used for a long time.
 - The batteries should not be exposed to excessive heat such as sunshine fire or the like.

Notice

Any changes or modifications made to this device that are not expressly approved by Gibson Innovations may void the user's authority to operate the equipment.

Care of the environment

Disposal of your old product



Your product is designed and manufactured with high quality materials and components, which can be recycled and reused.

Do not throw away the product with the normal household waste at the end of its life, but hand it in at an official collection point or recycling. By doing this, you help to preserve the environment.

Environmental information

All unnecessary packaging has been omitted. We have tried to make the packaging easy to separate into three materials: cardboard (box), polystyrene foam (buffer) and polyethylene (bags, protective foam sheet.)

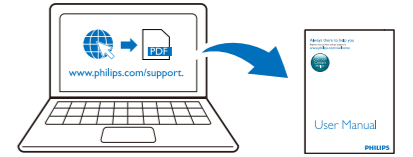
Your system consists of materials which can be recycled and reused if disassembled by a specialized company. Please observe the local regulations regarding the disposal of packaging materials, exhausted batteries and old equipment.

Made for
iPod iPhone

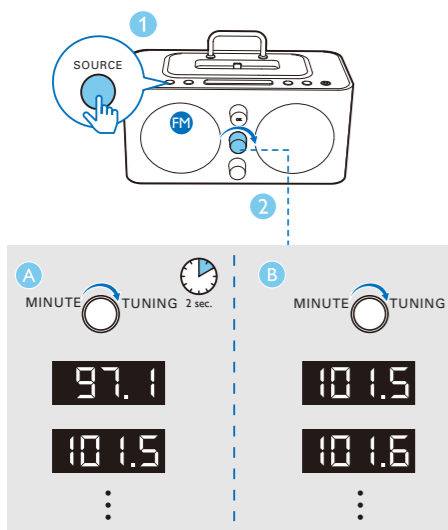
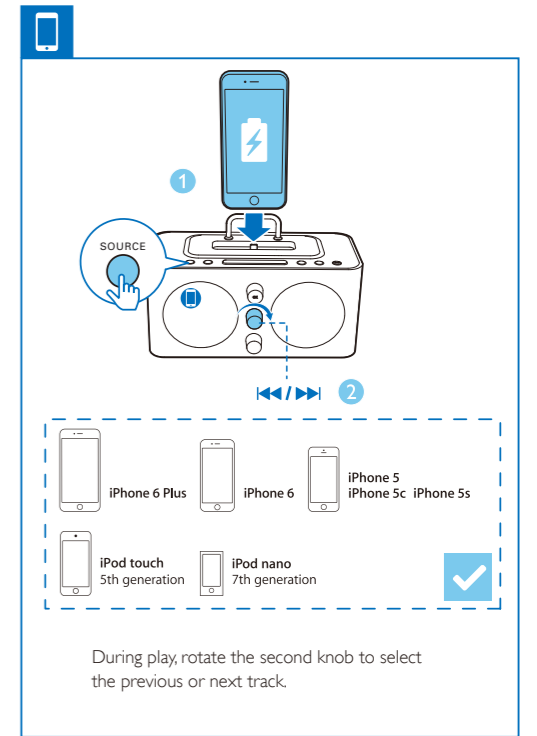
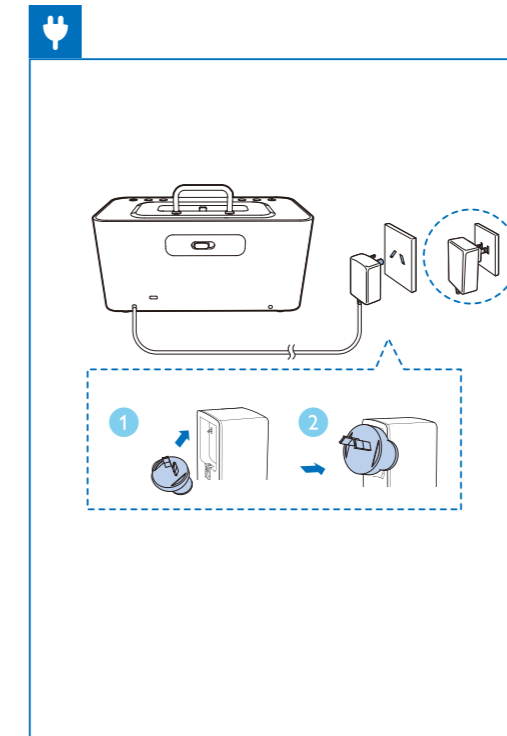
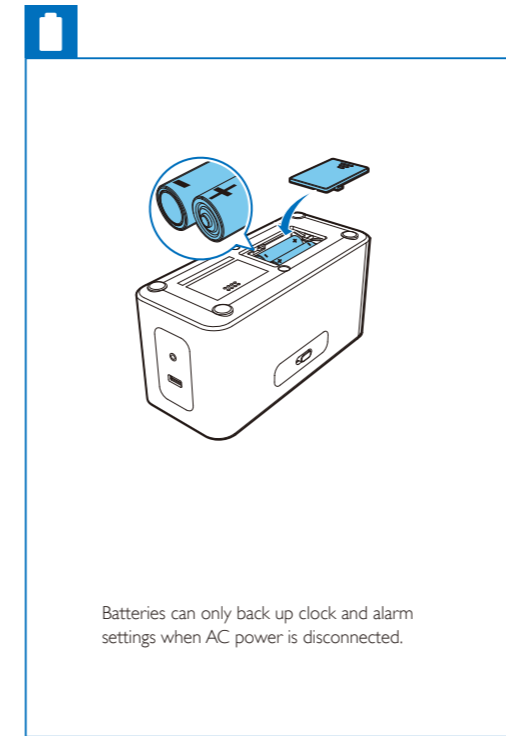
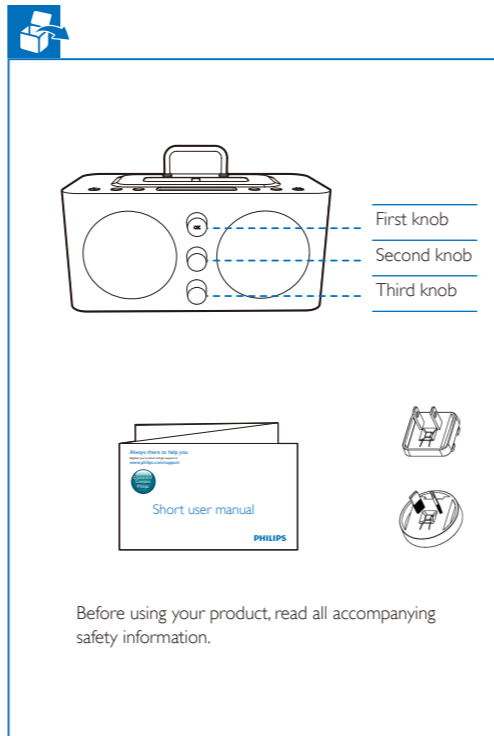
"Made for iPod" and "Made for iPhone" mean that an electronic accessory has been designed to connect specifically to iPod or iPhone respectively, and has been certified by the developer to meet Apple performance standards. Apple is not responsible for the operation of this device or its compliance with safety and regulatory standards. Please note that the use of this accessory with iPod or iPhone may affect wireless performance. iPod and iPhone are trademarks of Apple Inc., registered in the U.S. and other countries.

Note

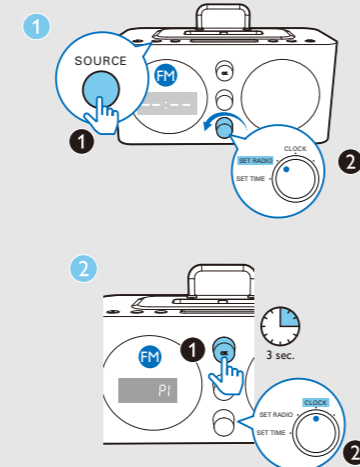
- The type plate is located on the bottom of the apparatus.



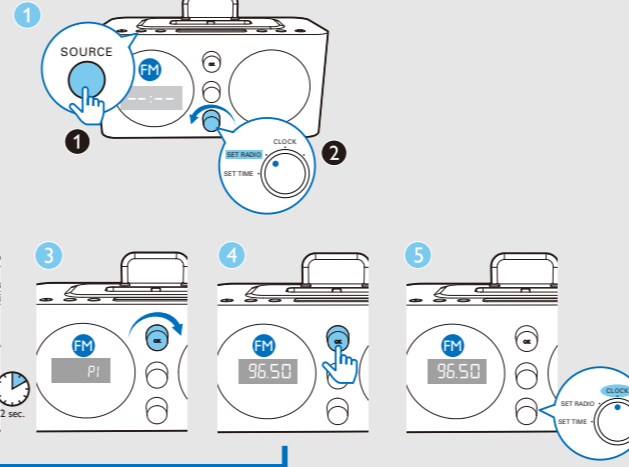
To download the full user manual, visit
www.philips.com/support



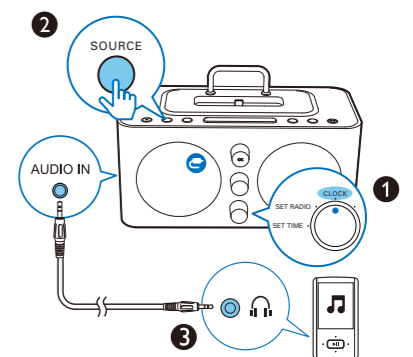
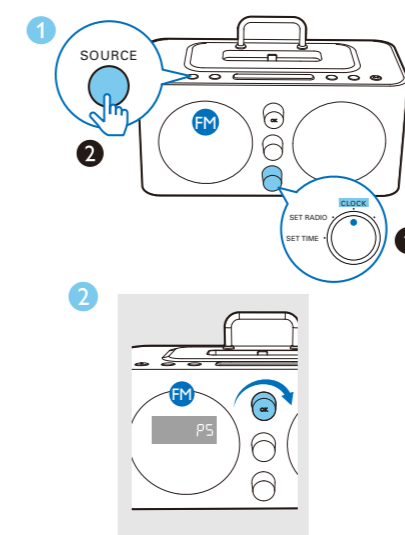
Store FM radio stations automatically



Store FM radio stations manually



Select a preset radio station



Set time

Note: When an iPod/iPhone is connected, the product synchronizes time from the iPod/iPhone automatically.

Set alarm

Note: Make sure that time is set correctly.

Slide the switch to select an alarm source: buzzer, your last listened radio channel, or the latest played audio on your iPod/iPhone. When an alarm rings, the alarm volume rises gradually.

Press **AL1** or **AL2** repeatedly to activate or deactivate the alarm timer.

- ↳ The alarm icon appears if the alarm timer is on, and disappears if it is off.
- To stop the alarm, press the corresponding **AL1** or **AL2**.
- ↳ The alarm repeats ringing for the next day.

When alarm sounds, press **SNOOZE** → The alarm snoozes and repeats ringing nine minutes later.

Sleep timer

Press **SLEEP** repeatedly to select a period (in minutes).

- ↳ After the set period, the product switches to standby mode automatically.
- To deactivate the sleep timer, press **SLEEP** repeatedly until **[OFF]** is displayed.

Snooze

USB charging

Volume control

Standby mode

Press **SOURCE** for 3 sec. to switch to standby mode.

Precautions

Specifications

Amplifier	
Rated Output Power	5W RMS
Frequency Response	60 -20000 Hz, ±3 dB
Signal to Noise Ratio	> 50 dBA
Audio in/AUX input	600mV RMS Rin≥22kΩ

Tuner	
Tuning Range	FM: 87.5 - 108 MHz
Tuning Grid	FM: 50 KHz
- Mono, 26dB S/N Ratio	<22 dBf
Search Selectivity	<35 dBf
Total Harmonic Distortion	< 2 %
Signal to Noise Ratio	>50 dB
Number of Presets	20

Speakers	
Speaker Impedance	8 ohm
Speaker Driver	1 X 2.5" full range
Sensitivity	85± 3dB/m/W

General information	
AC Power	Brand name: PHILIPS; Model: AS190-090-AD160;
	Input: 100-240 V~, 50/60 Hz, 0.7 A;
	Output: 9V = 1.6 A;
Battery	2 x AA batteries (not supplied)
Operation Power Consumption	< 15 W
Standby Power Consumption	< 1 W
USB Charging	5V, 1A
Dimensions	- Main Unit (W x H x D) 195 X 99 X 123 mm
Weight	- Main Unit 0.79 kg

PHILIPS

Warranty against Defects

In this warranty:
We or us means Gibson Innovations ARBN 165 105 975, and our contact details are set out at the end of this warranty;
You means the purchaser or the original end-user of the Goods;
Supplier means the authorised distributor or retailer of the Goods that sold you the Goods in Australia or New Zealand; and
Goods means the product or equipment which was accompanied by this warranty and purchased in Australia or New Zealand.

If you require assistance with the operation of the product, its features or specifications please call the Philips Consumer Care Centre on 1300 850 633 in Australia or 0800 639 953 in New Zealand.

Australia: Our Goods come with guarantees that cannot be excluded under the Australian Consumer Law. You are entitled to a replacement or refund for a major failure and for compensation for any other reasonably foreseeable loss or damage. You are also entitled to have the Goods repaired or replaced if the goods fail to be of acceptable quality and the failure does not amount to a major failure. This is not a complete statement of your legal rights as a consumer.

New Zealand: Our Goods come with guarantees that cannot be excluded under the Consumer Guarantees Act 1993. This guarantee applies in addition to the conditions and guarantees implied by that legislation.

- Additional Warranty:**
In addition to the rights and remedies that you have under the Australian Consumer Law, Consumer Guarantees Act of New Zealand or any other applicable law, we provide the following warranty against defects:
1. If, during the first **12 months** from their date of purchase from the Supplier (**Warranty Period**), the Goods prove defective by reason of improper workmanship or materials and none of your statutory rights or remedies apply, we will repair or replace the Goods without charge.
 2. We do not have to repair or replace the Goods under this Additional Warranty if the Goods have been used for a commercial purpose; misused, improperly or inappropriately installed, operated or repaired; abused; damaged; or not maintained in accordance with the manufacturer's instructions.
 3. Even when we do not have to repair or replace the Goods, we may decide to do so anyway. In some cases, we may decide to substitute the Goods with a similar alternative product of our choosing. All such decisions are at our absolute discretion.
 4. All such repaired, replaced or substituted Goods continue to receive the benefit of this Additional Warranty for the time remaining on the original Warranty Period.
 5. This Additional Warranty is limited to repair, replacement or substitution only. As far as the law permits, we will not be liable for any loss or damage caused to property or persons arising from any cause whatsoever.
 6. In order to claim under this Additional Warranty you must telephone us on 1300 850 633 in Australia or 0800 639 953 in New Zealand within the Warranty Period. You will be asked for details of the Goods, a description of the defect and your personal details. Upon accepting your claim, we shall assist you with either returning the Goods to the Supplier for replacement or to the most convenient Philips Authorised Service Centre for your Goods to be repaired. In some cases we may require that you return to the Goods to us (at the address below) for repair, replacement or substitution.
 - * All returned Goods must be accompanied by satisfactory proof of purchase which clearly indicates the name and address of the Supplier, the date and place of purchase and identifies product. It is best to provide a legible and unmodified receipt or sales invoice.
 - * You must bear any expense for return of the Goods or otherwise associated with making your claim under this Additional Warranty.
 7. This warranty is only valid and enforceable in Australia and New Zealand.

Contact us or the place of purchase for further details.

Australia Gibson Innovations Suite 22a 33 Waterloo Rd Nth Ryde, NSW 2113 Consumer Care: 1300 850 633 E-mail: pccw.woox@gibson.com Website: www.philips.com/support	New Zealand Consumer Care: 0800 639 953 Email: pccw.woox@gibson.com Website: www.philips.com/support
--	---