

Register your product and get support at  
[www.philips.com/welcome](http://www.philips.com/welcome)

**Immersive**  
6000 series



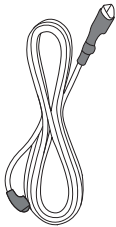
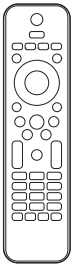
# Quick start guide

**PHILIPS**

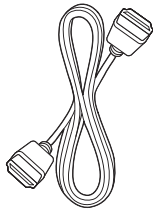


**EN** Before using your product, read all accompanying safety information

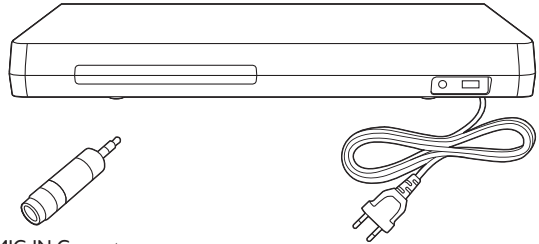
**ZH** 使用产品前，请阅读所有随附的安全信息



FM Antenna



HDMI

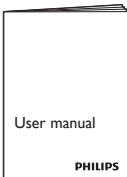


MIC-IN Converter



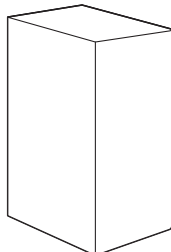
Quick start guide

PHILIPS



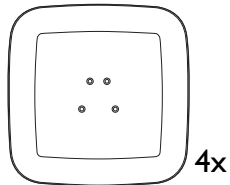
User manual

PHILIPS

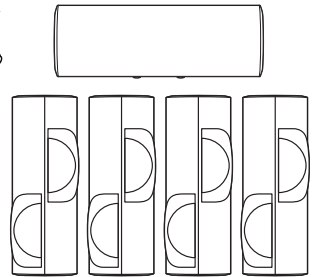


16x

4x



4x



4x

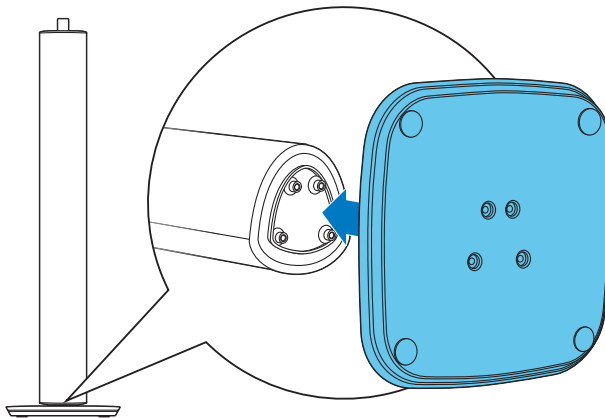


# 1

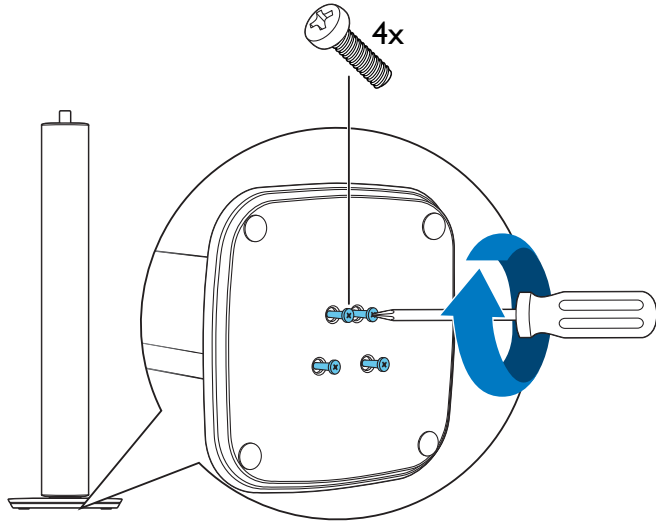
EN Stand mount the speakers

ZH 使用扬声器支架

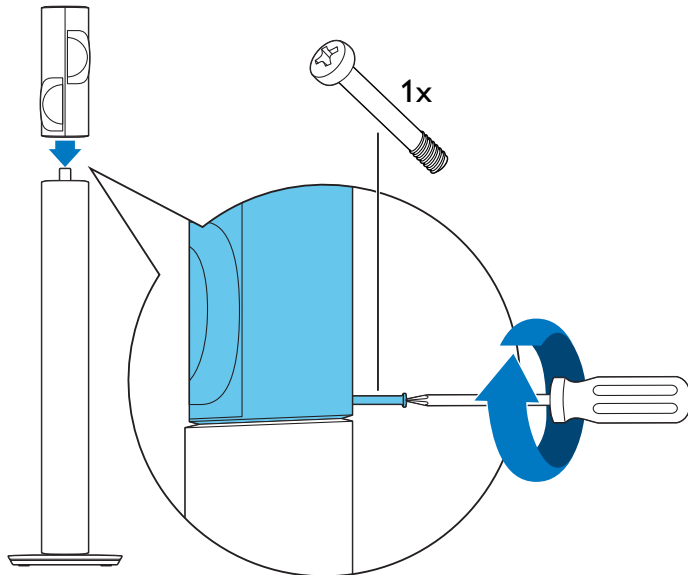
## 1



2



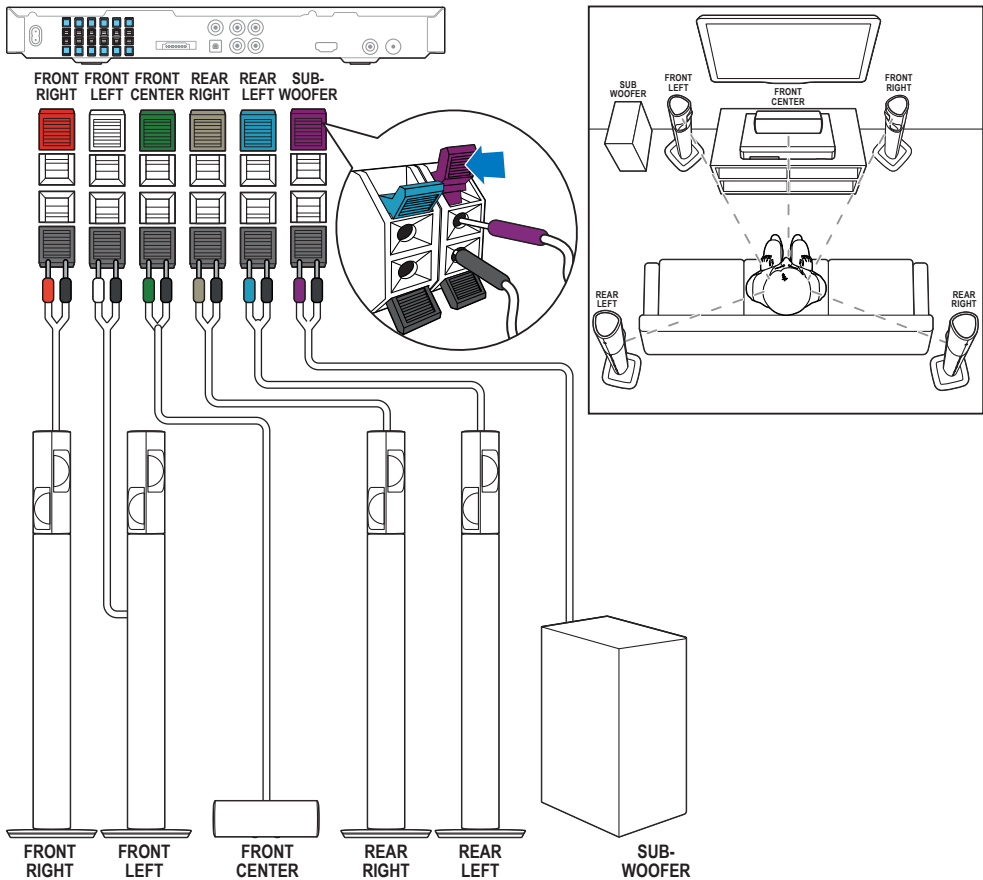
3



# 2

EN Connect the home theater

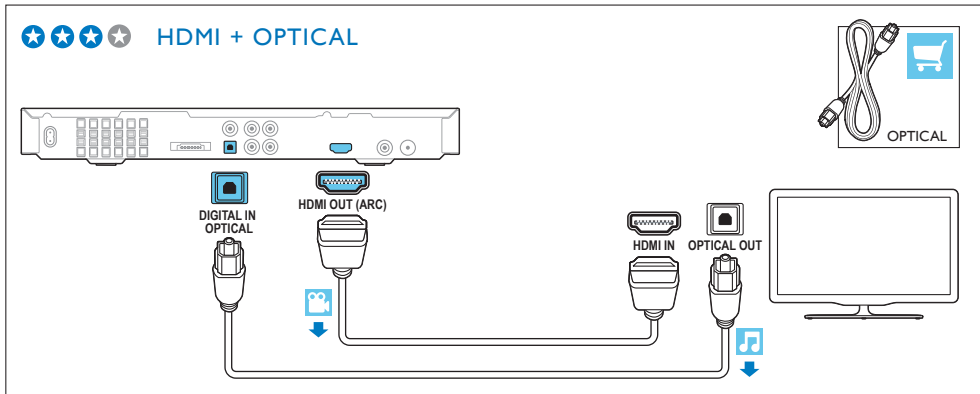
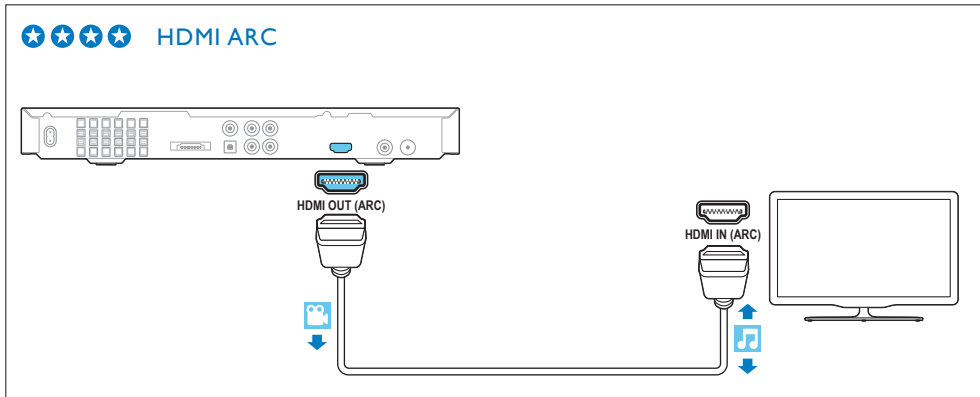
ZH 连接家庭影院



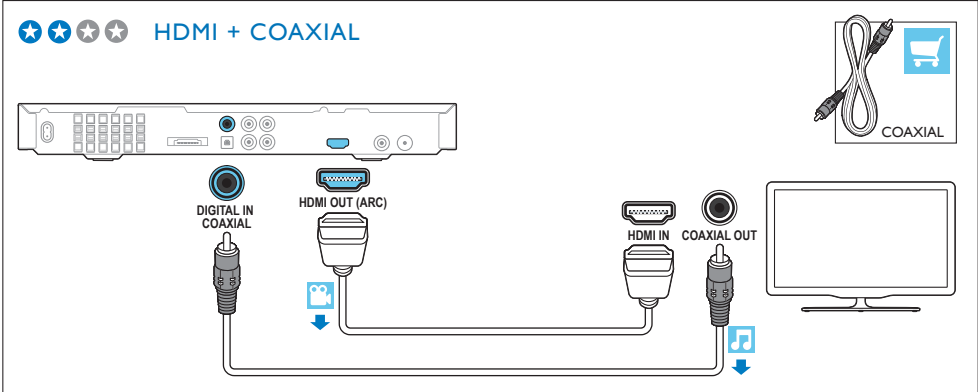
# 3

EN Connect to TV in one of these ways

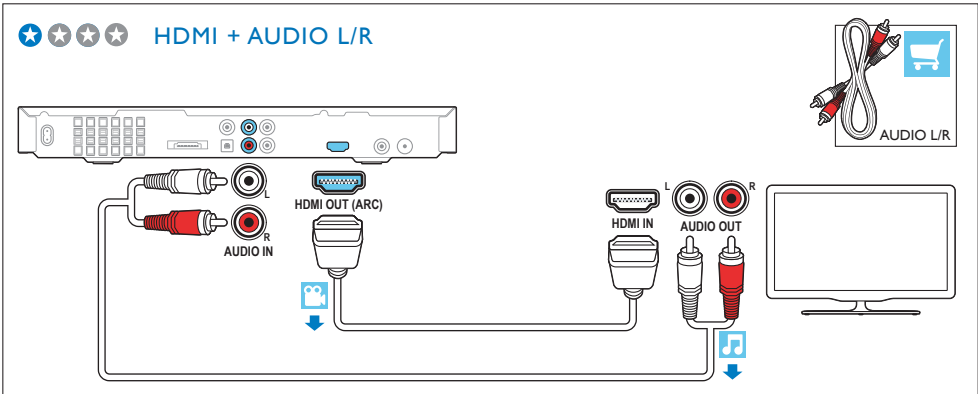
ZH 通过这些方式连接至电视



★ ★ ★ ★ HDMI + COAXIAL



★ ★ ★ ★ HDMI + AUDIO L/R

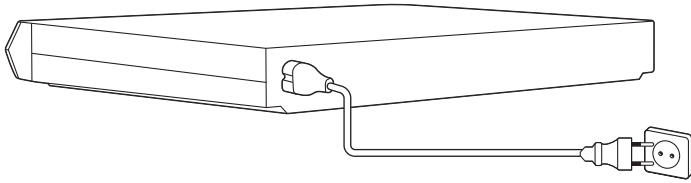


# 4

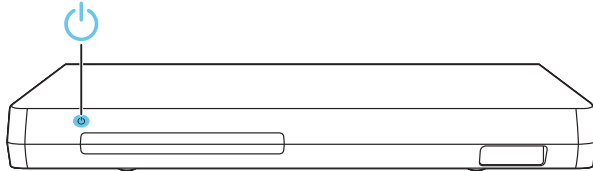
**EN** Switch on the home theater

**ZH** 打开家庭影院

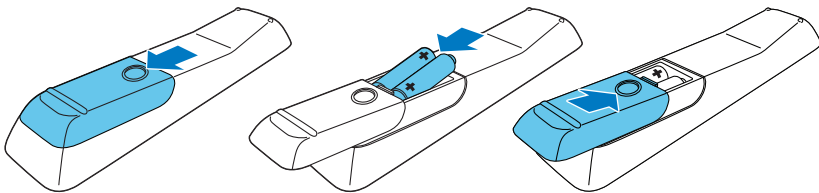
1



2



3

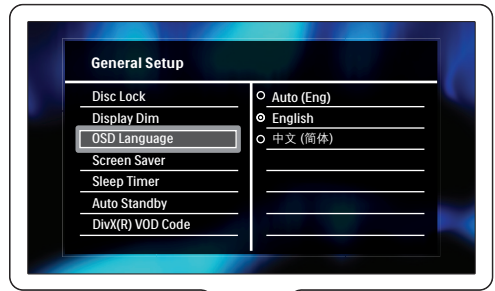
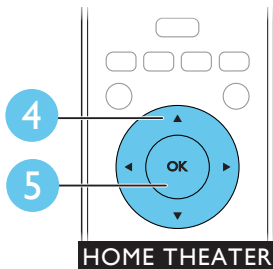
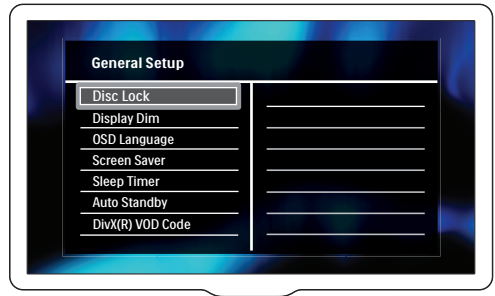
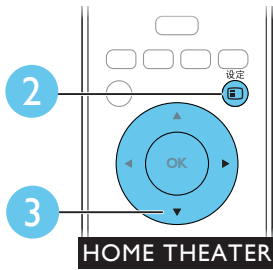
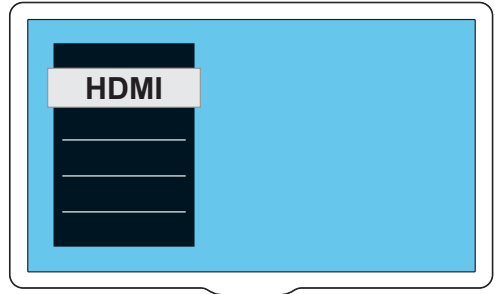
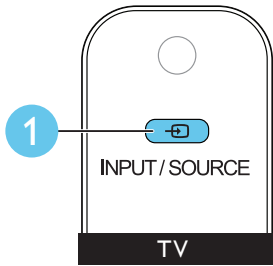




# 5

EN Complete the first time setup

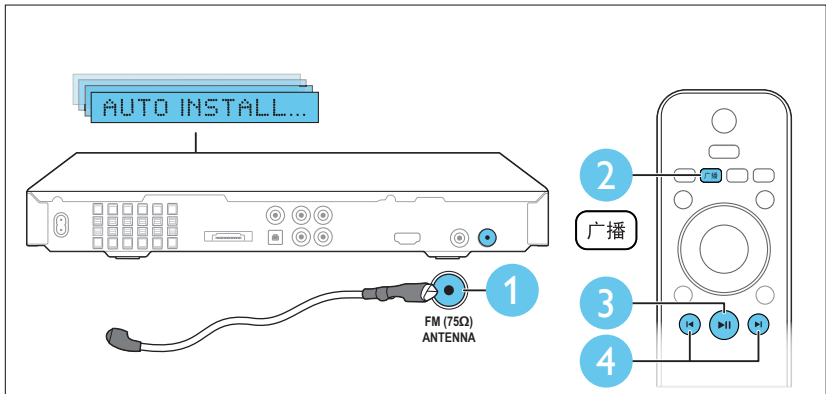
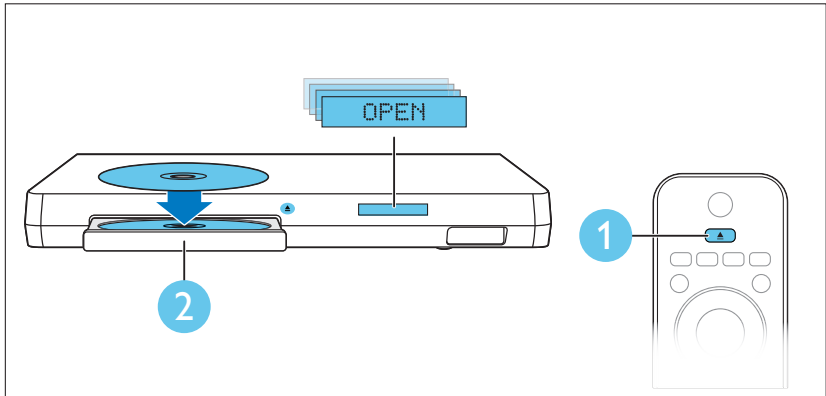
ZH 完成首次设置

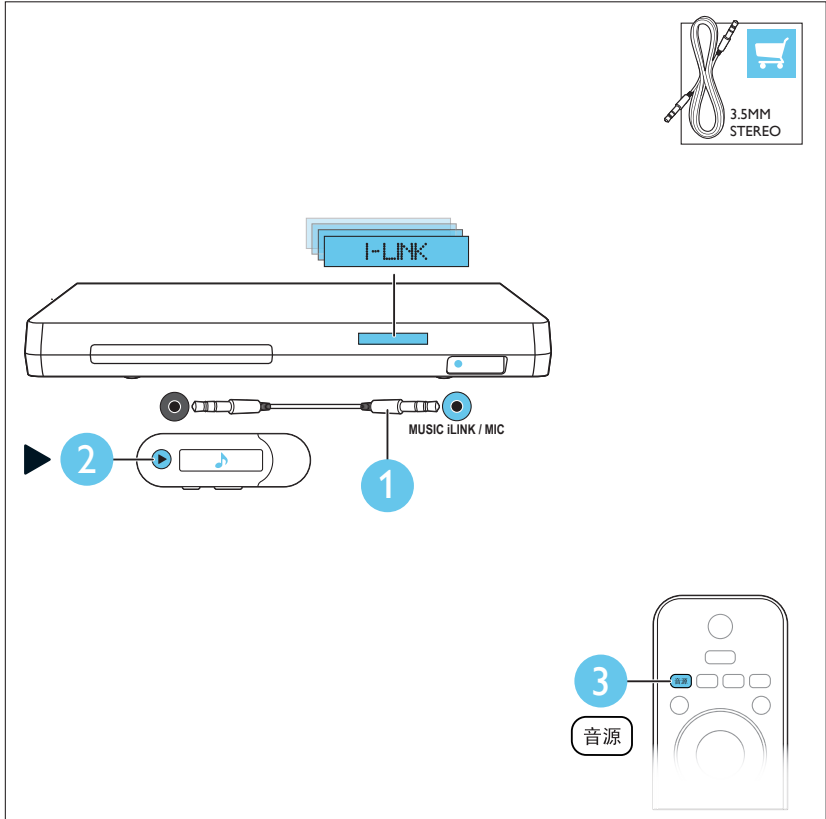
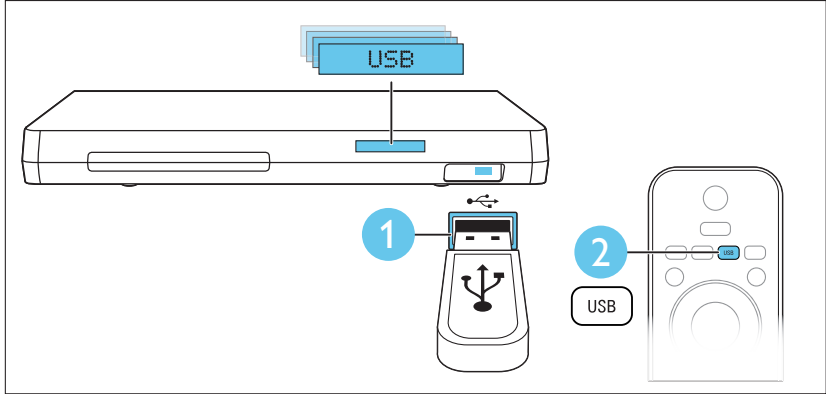


# 6

EN Use your home theater

ZH 使用家庭影院







**EN** For more information about using this product visit  
[www.philips.com/support](http://www.philips.com/support)

**ZH** 有关使用本产品的更多信息，  
请访问 [www.philips.com/support](http://www.philips.com/support)



[www.philips.com/support](http://www.philips.com/support)



Non-contractual images. / Images non contractuelles. /  
Außervertragliche Bilder.

All registered and unregistered trademarks are property  
of their respective owners.

Specifications are subject to change without notice  
Trademarks are the property of Koninklijke Philips Electronics  
N.V. or their respective owners  
2012 © Koninklijke Philips Electronics N.V. All rights reserved  
[www.philips.com](http://www.philips.com)  
sgsn\_1151/93\_v1

