

PHILIPS

Wireless Speaker

4000 series

TAS4405

User manual



Register your product and get support at
www.philips.com/support

Contents

1	Important	2
	Safety	2

2	Your wireless speaker	3
	Introduction	3
	What's in the box	3
	Overview	3

3	Get started	4
	Charge the built-in battery	4
	Install batteries for the microphone	4
	Install a micro-SD card	5

4	Power on/off	5
----------	---------------------	----------

5	Use Bluetooth devices	6
----------	------------------------------	----------

6	Micro-SD card mode	7
----------	---------------------------	----------

7	Mix your sound with an audio source	7
	Record	7

8	Product information	8
----------	----------------------------	----------

10	Notice	8
	Compliance	8
	Care of the environment	8
	FCC Statement	9
	Trademark notice	9

1 Important

Safety

Warning

- Never remove the casing of this product.
 - Never lubricate any part of this product.
 - Never place this product on other electrical equipment.
 - Keep this product away from direct sunlight, naked flames or heat.
-
- Read and follow these instructions.
 - Make sure that there is enough space around the product for ventilation.
 - Refer all servicing to qualified service personnel. Servicing is required when the product has been damaged in any way, such as power-supply cord or plug is damaged, liquid has been spilled or objects have fallen into the product, the product has been exposed to rain or moisture, does not operate normally, or has been dropped.
 - Only use attachments/accessories specified by the manufacturer.
 - Use only power supplies listed in this user manual.
 - Unplug this product during lightning storms or when unused for long periods of time.
 - This product should not be exposed to dripping or splashing.
 - Do not place any sources of danger on the product (e.g. liquid filled objects, lighted candles).
 - Where the plug of the Direct Plug-in Adapter is used as the disconnect device, the disconnect device shall remain readily operable.

- Do not use this product near water.
- Install in accordance with the manufacturer's instructions.
- Do not install near any heat sources such as radiators, heat registers, stoves, or other apparatus (including amplifiers) that produce heat.

This device contains licence-exempt transmitter(s)/receiver(s) that comply with Innovation, Science and Economic Development Canada's licence-exempt RSS(s). Operation is subject to the following two conditions:

- (1) This device may not cause interference; and
- (2) This device must accept any interference, including interference that may cause undesired operation of the device.

L'émetteur/récepteur exempt de licence contenu dans le présent appareil est conforme aux CNR d'Innovation, Sciences et Développement économique Canada applicables aux appareils radio exempts de licence. L'exploitation est autorisée aux deux conditions suivantes :

- 1) L'appareil ne doit pas produire de brouillage;
- 2) L'appareil doit accepter tout brouillage radioélectrique subi, même si le brouillage est susceptible d'en compromettre le fonctionnement.

TAS4405/37-MIC

This device operates on a no-protection, no-interference basis. Should the user seek to obtain protection from other radio services operating in the same TV bands, a radio licence is required. For further details, consult Innovation, Science and Economic Development Canada's document Client Procedures Circular CPC-2-1-28, Voluntary Licensing of Licence-Exempt Low-Power Radio Apparatus in the TV Bands.

TAS4405/37-MIC

Ce dispositif fonctionne sur une base de non-protection, sans interférence. Si l'utilisateur cherche à obtenir la protection d'autres services de radio opérant dans les mêmes bandes de télévision, une licence de radio est requise. Pour plus de détails, consultez le document de Innovation, Science et Développement économique Canada intitulé La circulaire CPC-2-1-28 sur les procédures clients, licence volontaire d'appareils radio à faible puissance exempté de licence dans les bandes de télévision.

2 Your wireless speaker

Congratulations on your purchase, and welcome to Philips! To fully benefit from the support that Philips offers, register your product at www.philips.com/welcome.

Introduction

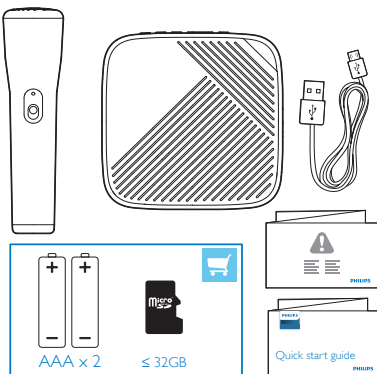
With this speaker and microphone, you can

- enjoy audio from a Bluetooth device,
- enjoy audio from a micro-SD card,
- one touch recording to micro-SD card.

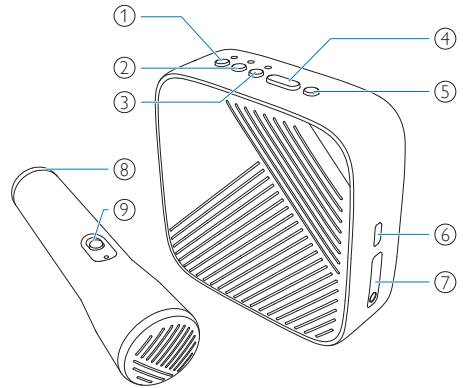
What's in the box

Please check and identify the contents of your package:

- Wireless speaker
- Wireless microphone
- USB cable
- Quick start guide
- Safety sheet



Overview



- ① Press and hold for 2 seconds to power on or off.
- ② Press to start or stop the recording of audio from both the wireless microphone and the speaker.
- ③ Press to select Bluetooth or micro-SD card source.
- ④ Press to adjust the volume.
- ⑤ Press to play or pause.
• Press twice to skip to the next track.
- ⑥ **Micro-USB charging port**
- ⑦ **Micro-SD card slot**
- ⑧ **Battery compartment lid**
- ⑨ **Microphone power switch**

3 Get started

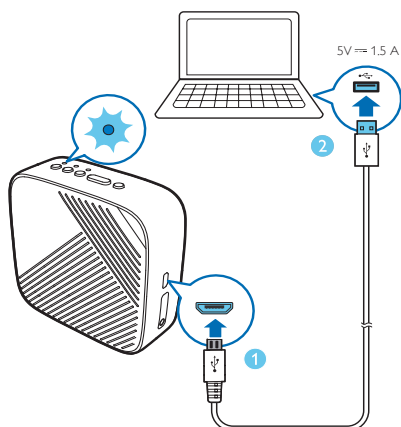
Always follow the instructions in this chapter in sequence.

Charge the built-in battery

The speaker is powered by a built-in rechargeable battery.

Note

- Fully charge the built-in battery before using.



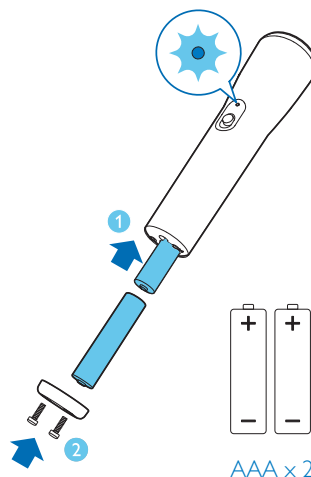
Connect the USB cable between the micro-USB socket on the speaker and a USB socket on your computer or a charger.

LED indicator (Power)

Flashing red	Being charged when powered off
Solid red	Fully charged when powered off
Flashing red/green alternatively	Being charged when powered on
Solid green	Fully charged when powered on

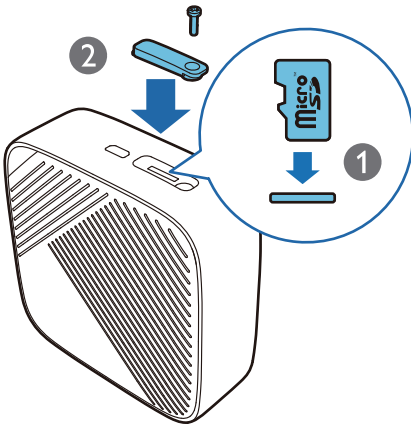
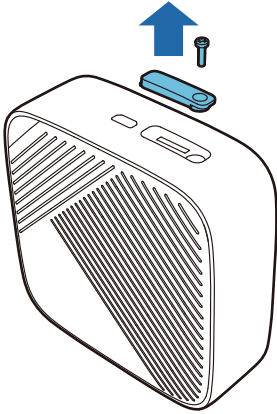
Install batteries for the microphone

- 1 Open the battery compartment lid.
- 2 Install 2 AAA alkaline batteries (not provided) with the correct polarity.
- 3 Close the battery compartment lid.



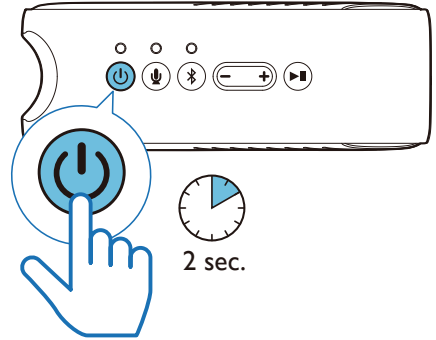
Install a micro-SD card

- 1 Open the lid of the card slot.
- 2 Insert a micro-SD card (not provided) with the pin side facing down till you hear a click. Then close the lid of the card slot.

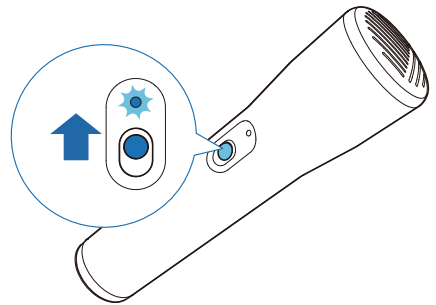


4 Power on/off

- 1 Press and hold  for 2 seconds to power on or off the speaker.



- 2 Slide up the power switch to power on the microphone.
Mic up to 5 m wireless range



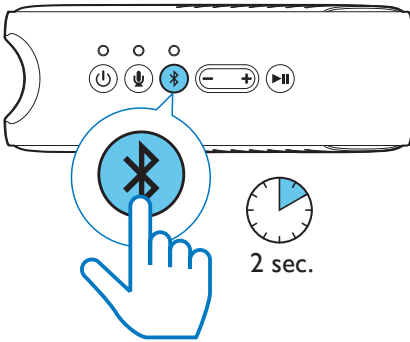
5 Use Bluetooth devices

With this speaker, you can enjoy audio from your Bluetooth device.

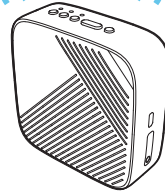
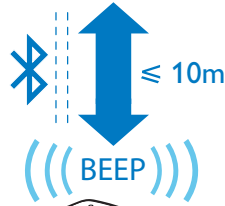
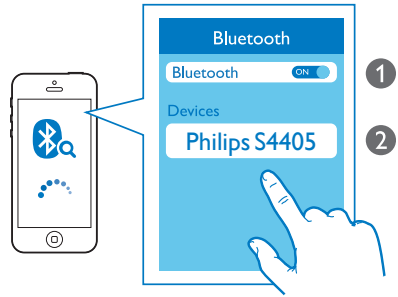
Note

- Make sure that the Bluetooth function is enabled on your device.
- Keep away from any other electronic device that may cause interference.

- 1 Press and hold  for 2 seconds to enter the Bluetooth pairing mode.




- 2 Select "Philips S4405" in the Bluetooth list on your device.
- ↳ If a message prompts for permission for Bluetooth connection, confirm it.
 - ↳ If a password is required, enter 0000 and then confirm.
 - ↳ The speaker beeps when successfully connected.



LED indicator (Bluetooth)


Flashing blue	Bluetooth pairing
Solid blue	Bluetooth connected

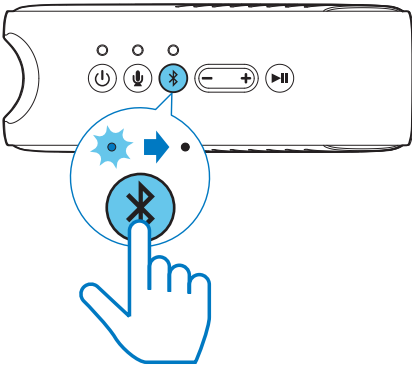
Note

- To disconnect, disable the Bluetooth connection with this product on your device or press  again to switch to micro-SD card mode.

6 Micro-SD card mode

You can enjoy audio from a micro-SD card that stores audio files.

Press  repeatedly to select the micro-SD source. The Bluetooth LED indicator will be turned off for micro-SD auto playback.




7 Mix your sound with an audio source

Note

- Do not directly point the microphone to the speaker to prevent microphone feedback.

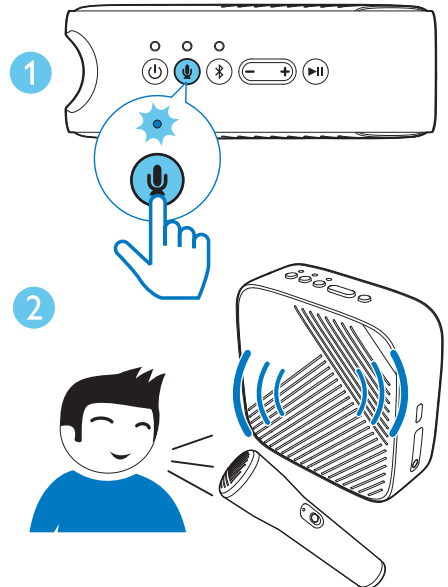
By using the wireless microphone, you can mix your sound with an audio source

Record

In the Bluetooth mode, press  to start or stop the recording.

LED indicator (REC)

Flashing red	Error (no micro-SD card inserted or the card is full)
Solid red	Recording



8 Product information

Note

- Product information is subject to change without prior notice.

General information

Power supply:	5V = 1.5A
Speaker driver	1.5"
Charging time (Speaker)	2.5 hours
Playtime	6 hours
Built-in Lithium battery (Speaker)	3.7V, 1500mAh
Dimensions (Speaker)	105 × 105 × 38 mm
Weight (Speaker)	250 g

Bluetooth

Bluetooth version	V4.2
Bluetooth range	10 m / 32.1 ft

Mic

Mic wireless range	max 5m
--------------------	--------

10 Notice

Any changes or modifications made to this device that are not expressly approved by **MMD Hong Kong Holding Limited** may void the user's authority to operate the product.

Compliance



Hereby, **MMD Hong Kong Holding Limited** declares that this product is in compliance with the essential requirements and other relevant provisions of Directive 2014/53/EU. You can find the Declaration of Conformity on www.philips.com/support.

Care of the environment

Disposal of your old product and battery



Your product is designed and manufactured with high quality materials and components, which can be recycled and reused.



This symbol on a product means that the product is covered by European Directive 2012/19/EU.



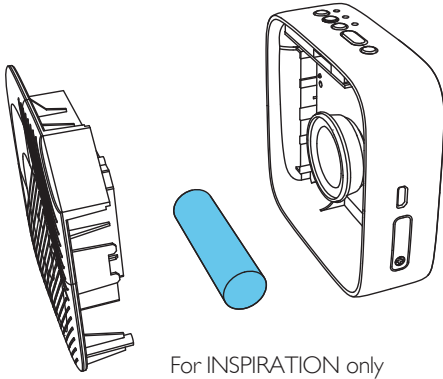
This symbol means that the product contains batteries covered by European Directive 2013/56/EU which cannot be disposed of with normal household waste.

Inform yourself about the the local separate collection system for electrical and electronic products and batteries. Follow local rules and

never dispose of the product and batteries with normal household waste. Correct disposal of old products and batteries helps prevent negative consequences for the environment and human health.

Removing the disposal batteries

To remove the disposable batteries, see battery install section.



Environmental information

All unnecessary packaging has been omitted. We have tried to make the packaging easy to separate into three materials: cardboard (box), polystyrene foam (buffer) and polyethylene (bags, protective foam sheet.)

Your system consists of materials which can be recycled and reused if disassembled by a specialized company. Please observe the local regulations regarding the disposal of packaging materials, exhausted batteries and old equipment.

FCC Statement

This device complies with Part 15 of the FCC Rules. Operation is subject to the following two conditions: (1) This device may not cause harmful interference, and (2) This device must accept any interference received, including interference that may cause undesired operation.

Warning: Changes or modifications not expressly approved by the party responsible for compliance could void the user's authority to operate the equipment.

Note: This equipment has been tested and found to comply with the limits for a Class B digital device, pursuant to Part 15 of the FCC Rules.

These limits are designed to provide reasonable protection against harmful interference in a residential installation.

This equipment generates, uses and can radiate radio frequency energy and, if not installed and used in accordance with the instructions, may cause harmful interference to radio communications. However, there is no guarantee that interference will not occur in a particular installation. If this equipment does cause harmful interference to radio or television reception, which can be determined by turning the equipment off and on, the user is encouraged to try to correct the interference by one or more of the following measures: (1) Reorient or relocate the receiving antenna. (2) Increase the separation between the equipment and receiver. (3) Connect the equipment into an outlet on a circuit different from that to which the receiver is connected. (4) Consult the dealer or an experienced radio/TV technician for help.

RF Warning Statement

The device has been evaluated to meet general RF exposure requirements. The device can be used in portable exposure conditions without restriction.

Trademark notice



The Bluetooth® word mark and logos are registered trademarks owned by the Bluetooth SIG, Inc. and any use of such marks by **MMD Hong Kong Holding Limited** is under license. Other trademarks and trade names are those of their respective owners.



Specifications are subject to change without notice.

Philips and the Philips Shield Emblem are registered trademarks of Koninklijke Philips N.V. and are used under license. This product has been manufactured by and is sold under the responsibility of MMD Hong Kong Holding Limited or one of its affiliates, and MMD Hong Kong Holding Limited is the warrantor in relation to this product.

