

D260  
D265



## Short user manual

**PHILIPS**

# Important safety instructions

### Warning

- The Electrical network is classified as hazardous. The only way to power down the charger is to unplug the power supply from the electrical outlet. Ensure that the electrical outlet is always easily accessible.
- Refer to safety information before using the product.
- Hereby, TP Vision Europe B.V. declares that this product is in compliance with the essential requirements and other relevant provisions of Directive 2014/53/EU.
- Use only the power supply listed in the user instructions.
- Use only the batteries listed in the user instructions.
- Do not allow the product to come into contact with liquids.
- Risk of explosion if battery is replaced by an incorrect type.
- Dispose of used batteries according to the instructions.
- When the handset rings or when the handsfree is activated, keep the handset away from your ear to avoid hearing damage.

## 1 Overview

### In call

- MENU OK** Enter the option menu.
- REDIAL C** Access the redial list.
- ▲/▼** Adjust the volume.
- R** Recall (network dependent).
- ☎** End calls.
- #a/A** Enter a pause (press and hold).
- 🔊** Turn the speaker on/off.
- 🔇** Mute/unmute the microphone.

### In menu

- MENU OK** Confirm / Select / Enter the option menu.
- REDIAL C** Cancel /back
- ▲/▼** Up / down
- ☎** Exit menu.

### Display icons

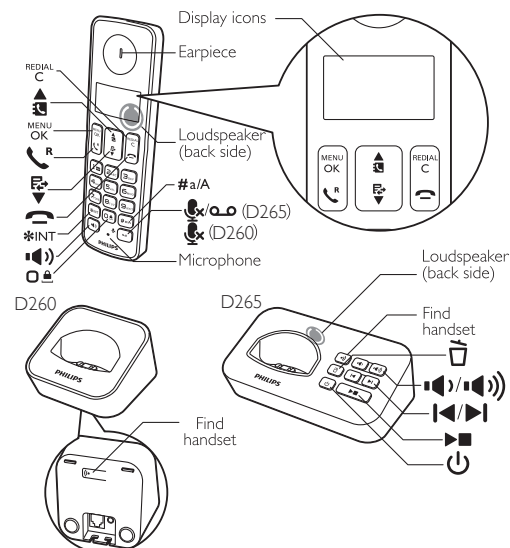
- 📶** It displays the connection between the handset and the base. The more bars are shown, the better the signal strength is.
- 📞** It remains steadily on when browsing incoming calls in the call log.
- 📞** It indicates an outgoing call in the redial list.
- 📞** It flashes when there is a new missed call or when browsing new missed calls. It remains steadily on when browsing the missed calls in call log that are already read.
- 📞** It flashes when receiving incoming call. It remains steadily on during a call.
- 🔊** The speaker is on.
- 🔇** The ringer is off.
- 📞** D265 only; answering machine: it flashes when there is a new message or when the memory is full. It remains steadily on when the telephone answering machine is turned on.
- ✉** Voice messages indicator: flashes for new messages, is steady for reviewed messages.  
\* This is network dependent
- ▲/▼** It is displayed when you scroll up/down a list or increase and decrease the volume.
- ▶** There are more digits on the right. Press **REDIAL C** to read.
- ECO+** The ECO+ mode is activated.

### Standby

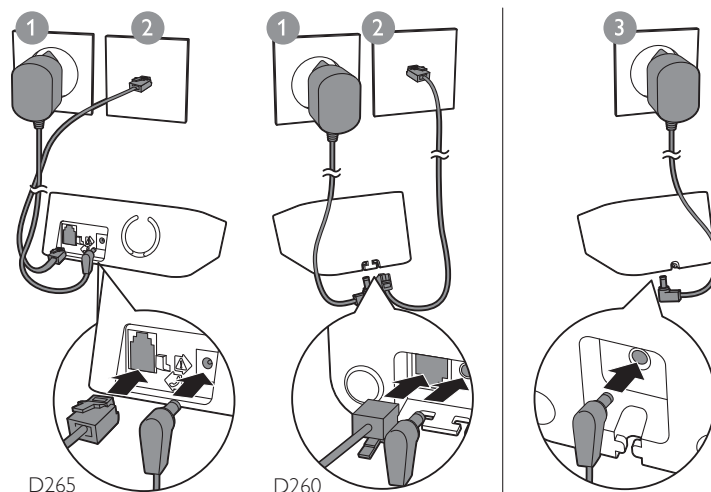
- MENU OK** Access the main menu.
- REDIAL C** Access the redial list.
- 📖** Phonebook
- 📞** Call log
- ☎** Make and receive calls.
- ☎** Switch the handset on/off (press and hold).
- \*INT** Make intercom call (press and hold).
- 🔒** Lock/unlock the keypad (press and hold).
- 🔊** Make and receive calls through the speaker.
- 📞** D265 only:  
Press to listen to new message from the answer machine. / Access the answer machine menu.

### In text input

- REDIAL C** Delete text.
- 📶** Enter a space.
- #a/A** Switch upper/lower case.



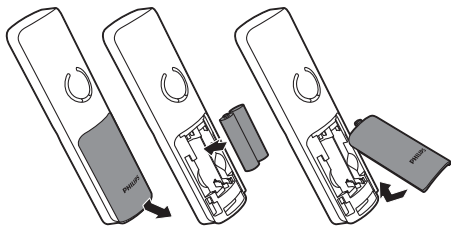
## 2 Connect



Multi-handset version only.

## 3 Get started

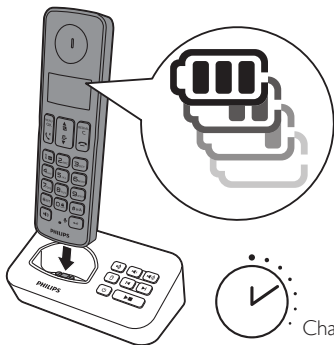
### Insert batteries



### Configure your phone

- 1 When using your phone for the first time, you see a welcome message (country dependent).
- 2 Set the country and language if prompted.
- 3 Set the date and time.
  - If the time is in 12-hour format, press  $\uparrow/\downarrow$  to select **[am]** or **[pm]** (country dependent).

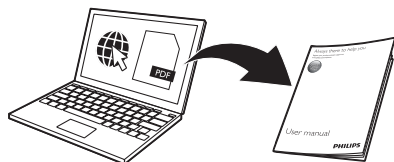
### Charge your phone



- > 70%
- 40% - 70%
- 10% - 40%
- < 10%

Flashing: low battery  
Scrolling: charging in progress

## i



[www.philips.com/support](http://www.philips.com/support)

To access the user instructions online, use the reference model number written on the product label at the bottom of the base station.



This symbol on a product means that the product is covered by European Directive 2012/19/EU.

2022 © MMD Hong Kong Holding Limited. All rights reserved.  
This product has been manufactured by, and is sold under the responsibility of MMD Hong Kong Holding Limited and MMD Hong Kong Holding Limited is the warrantor in relation to this product. Philips and the Philips Shield Emblem are registered trademarks of Koninklijke Philips N.V. and are used under license from Koninklijke Philips N.V.



UMS\_D260/265  
EN\_V1.0

## 4 Enjoy

### Phonebook

#### Add record

- 1 Press  $\text{MENU}$   $\text{OK}$ .
- 2 Select **[Phonebook]** > **[Add new]**.
- 3 Follow on-screen instructions.

#### Call from the phonebook

- 1 Press  $\uparrow$ .
- 2 Select a record and press  $\text{CALL}$ .

#### Direct access memory

You have 2 direct access memories (keys 1 and 2). To dial the saved phone number automatically, press and hold on the keys in standby mode.

Depending on your country, keys 1 and 2 are preset to the voice mail number and information service number of your service provider respectively. (network dependent).

### Call log

#### Call from the call log

- 1 Press  $\text{CALL}$ .
- 2 Select a record and press  $\text{CALL}$ .

#### View record

Press  $\text{CALL}$  >  $\text{MENU}$   $\text{OK}$  > **[View]**.

#### Save record

- 1 Press  $\text{CALL}$  >  $\text{MENU}$   $\text{OK}$  > **[Save number]**.
- 2 Follow on-screen instructions.

#### Delete record

- 1 Press  $\text{CALL}$  >  $\text{MENU}$   $\text{OK}$  > **[Delete]**.
- 2 Follow on-screen instructions.

### Redial list

#### Call from the redial list

- 1 Press  $\text{REDIAL}$   $\text{C}$ .
- 2 Select a record and press  $\text{CALL}$ .

#### Save record

- 1 Press  $\text{REDIAL}$   $\text{C}$  >  $\text{MENU}$   $\text{OK}$  > **[Save number]**.
- 2 Follow on-screen instructions.

#### Delete record

- 1 Press  $\text{REDIAL}$   $\text{C}$  >  $\text{MENU}$   $\text{OK}$  > **[Delete]**.
- 2 Follow on-screen instructions.

### Telephone answering machine (for D265 only)

#### Record an announcement

- 1 Press  $\text{MENU}$   $\text{OK}$  > **[Answ machine]** > **[Announcement]**.
- 2 Follow on-screen instructions.

#### Listen to the incoming messages

Press  $\text{MENU}$   $\text{OK}$  > **[Answ machine]** > **[Play]**.

#### Delete an incoming messages

- 1 When you listen to the message, press  $\text{MENU}$   $\text{OK}$  to enter the options menu.
- 2 Select **[Delete]**, then press  $\text{MENU}$   $\text{OK}$  to confirm.

### Register additional handsets

You can register additional handsets to the base station.

- 1 Press  $\text{MENU}$   $\text{OK}$ .
- 2 Select **[Services]** > **[Register]**, then press  $\text{MENU}$   $\text{OK}$  to confirm.
- 3 Press and hold  $\bullet$  on the base station for 5 seconds.
- 4 Enter the system PIN/passcode (0000).
- 5 Press  $\text{MENU}$   $\text{OK}$  to confirm the PIN/passcode.
  - Registration is complete in less than 2 minutes.

### Restore default settings

You can reset your phone settings to the original factory settings.

- 1 Press  $\text{MENU}$   $\text{OK}$ .
- 2 Select **[Services]** > **[Reset]**, then press  $\text{MENU}$   $\text{OK}$  to confirm.
- 3 Follow on-screen instructions.

## ≡ Note

- You may recall the original PIN/passcode by following this procedure.

## Technical data

### Battery

- Philips: 2 x AAA NiMH 1.2 V Rechargeable 550 mAh batteries
- Use only the supplied batteries.

### Adapter

Base and charger:

	Input:	Output:
Meic:	100-240 V~, 50/60 Hz, 200 mA	6 V DC, 400 mA
HuaJin:	100-240 V~, 50/60 Hz, 150 mA	6 V DC, 400 mA
HJ-0600400PI-EU	50/60 Hz, 150 mA	400 mA

Phonebook with 50 entries

Call log with 20 entries

Talk time: 16 hours

Standby time: 180 hours

## ≡ Note

- You can install a DSL (digital subscriber line) filter to prevent noise and caller ID problems caused by the DSL interference.
- You can find the Declaration of Conformity on [www.p4c.philips.com](http://www.p4c.philips.com).

## ? Frequently asked questions

### No signal bar is displayed on the screen.

- The handset is out of range. Move it closer to the base station.
- If the handset displays **[Unregistered]**, register your handset (see the section on "Register additional handsets").

### If I fail to pair (register) the additional handsets to the base station, what do I do?

Your base memory is full. Access  $\text{MENU}$   $\text{OK}$  > **[Services]** > **[Unregister]** to unregister the unused handsets and try again.

### I have chosen a wrong language which I cannot read, what do I do?

- 1 Press  $\text{CALL}$  to go back to the standby screen.
- 2 Press  $\text{MENU}$   $\text{OK}$  to access the main menu screen.
- 3 The following options will appear on the screen:

<b>[Phone setup]</b> > <b>[Language]</b>
<b>[Réglages]</b> > <b>[Langue]</b>
<b>[Config. tel.]</b> > <b>[Sprache]</b>
<b>[Config. telef.]</b> > <b>[Lingua]</b>

- 4 Select them to access the language options.
- 5 Select your own language.

### My handset is in searching status, what do I do?

- Make sure that the base station has power supply.
- Register the handset to the base station.
- Move the handset closer to the base station.

### I cannot change the settings of my voice mail, what do I do?

The voice mail service is managed by your service provider but not the phone itself. Contact your service provider to change the settings.

### No display

- Make sure the batteries are charged.
- Make sure there are power and phone connections.

### The handset on the charger does not charge.

- Make sure the batteries are inserted correctly.
- Make sure the handset is placed properly on the charger. The battery icon animates when charging.
- Make sure the docking tone setting is turned on. When the handset is placed correctly on the charger, you can hear a docking tone.
- The charging contacts are dirty. Disconnect the power supply first and clean the contacts with a damp cloth.
- Batteries are defective. Purchase new ones with the same specifications.

### Bad audio (crackles, echo, etc.)

- The handset is nearly out of range. Move it closer to the base station.
- The phone receives interference from the nearby electrical appliances. Move the base station away from them.
- The phone is at a location with thick walls. Move the base away from them.

### The handset does not ring.

Make sure the handset ringtone is turned on.

### The caller ID does not display.

- The service is not activated. Check with your service provider.
- The caller's information is withheld or unavailable.