

Always there to help you

Register your product and get support at
www.philips.com/welcome

DS7520/93



User manual

PHILIPS

Contents

1	Important	3
----------	------------------	----------

2	Your Docking Speaker	4
	Introduction	4
	What's in the box	4
	Overview of the main unit	5

3	Get started	6
	Connect power	6
	Turn on	7

4	Play	8
	Play from iPod/iPhone	8
	Play from an external audio device	9
	Adjust volume	9
	Enrich sound output	9

5	Product information	10
	Specifications	10

6	Troubleshooting	11
----------	------------------------	-----------

7	Notice	12
----------	---------------	-----------

1 Important

- Follow all instructions.
- Do not block any ventilation openings. Install in accordance with the manufacturer's instructions.
- Do not install near any heat sources such as radiators, heat registers, stoves, or other apparatus (including amplifiers) that produce heat.
- Protect the power cord from being walked on or pinched, particularly at plugs, convenience receptacles, and the point where they exit from the apparatus.
- Only use attachments/accessories specified by the manufacturer.
- Unplug this apparatus during lightning storms or when unused for long periods of time.
- Refer all servicing to qualified service personnel. Servicing is required when the apparatus has been damaged in any way, such as power-supply cord or plug is damaged, liquid has been spilled or objects have fallen into the apparatus, the apparatus has been exposed to rain or moisture, does not operate normally, or has been dropped.
- Battery usage CAUTION – To prevent battery leakage which may result in bodily injury, property damage, or damage to the unit:
 - Install all batteries correctly, + and - as marked on the unit.
 - Do not mix batteries (old and new or carbon and alkaline, etc.).
 - Remove batteries when the unit is not used for a long time.
 - Batteries (battery pack or batteries installed) shall not be exposed to excessive heat such as sunshine, fire or the like.
- Apparatus shall not be exposed to dripping or splashing.

- Do not place any sources of danger on the apparatus (e.g. liquid filled objects, lighted candles).
- Where the plug of the Direct Plug-in Adapter is used as the disconnect device, the disconnect device shall remain readily operable.



Warning

- Never remove the casing of this apparatus.
- Never place this apparatus on other electrical equipment.
- Keep this device away from direct sunlight, naked flames or heat.
- Ensure that you always have easy access to the power cord, plug or adaptor to disconnect the apparatus from the power.

2 Your Docking Speaker

Congratulations on your purchase, and welcome to Philips! To fully benefit from the support that Philips offers, register your product at www.philips.com/welcome.

If you contact Philips, you will be asked for the model and serial number of this apparatus. The model number and serial number are on the back of the apparatus. Write the numbers here:

Model No. _____

Serial No. _____

Introduction

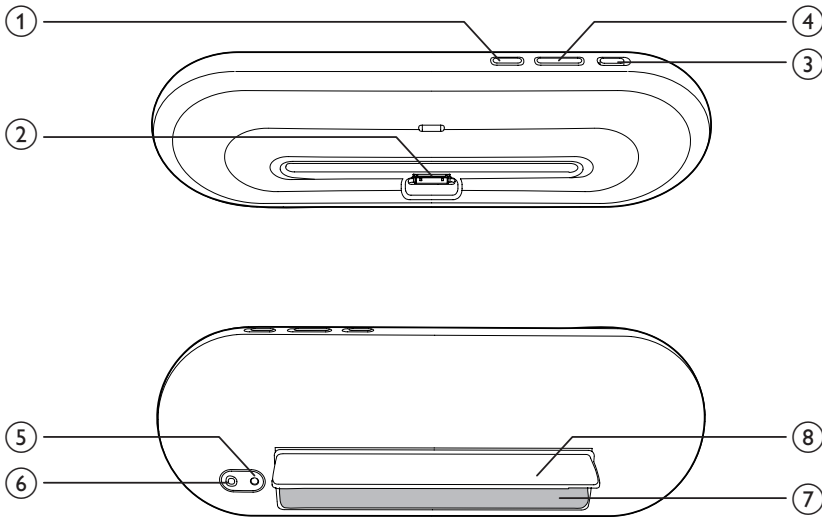
With this docking speaker, you can enjoy audio from the iPod/iPhone, and other external audio devices.

What's in the box

Check and identify the contents of your package:

- Main unit
- AC power adaptor
- Quick start guide

Overview of the main unit



- ① **DBB**
 - Switch on/off Dynamic Bass Boost.
- ② **Dock for the iPod/iPhone.**
- ③ **ON/OFF**
 - Switch on/off the docking speaker.
- ④ **-VOLUME +**
 - Adjust volume.
- ⑤ **DC IN**
 - Connect power.
- ⑥ **AUX IN**
 - Connect an external audio device.
- ⑦ **Battery compartment**
- ⑧ **Stand foot**

3 Get started

Always follow the instructions in this chapter in sequence.

Connect power

This docking speaker can be powered by either AC power or batteries.

Option 1: AC power

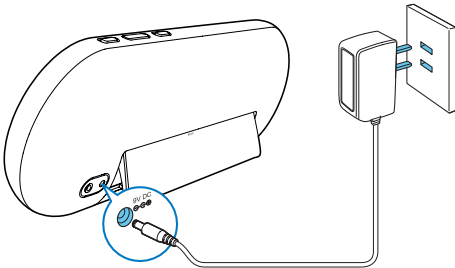


Caution

- Risk of product damage! Make sure that the power supply voltage matches the voltage printed on the bottom of the unit.
- Risk of electric shock! When you unplug the AC adaptor, always pull the plug from the socket. Never pull the cord.

Connect the AC power adaptor to:

- the power socket at the back of the docking speaker;
- the wall socket.



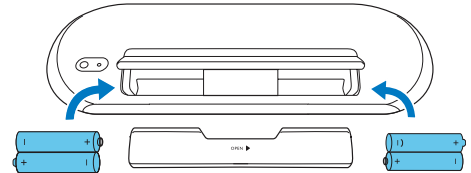
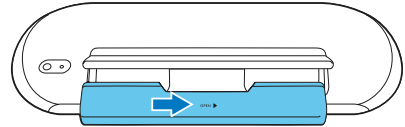
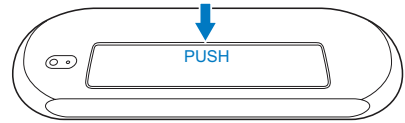
Option 2: Battery power



Caution

- Risk of explosion! Keep batteries away from heat, sunshine or fire. Never discard batteries in fire.
- Remove batteries if they are exhausted or will not be used for a long time.
- Batteries contain chemical substances, so they should be disposed of properly.

- 1 Open the battery compartment.
- 2 Insert 4 x 1.5V AA batteries with correct polarity (+/-) as indicated.
- 3 Close the battery compartment.



Turn on

Switch the power button to **ON** position to turn on the docking speaker:

- ↳ The LED indicator lights up.

Switch to standby mode

The docking speaker switches to economic standby mode in the following situations:

- The speaker is idle for 15 minutes when powered by AC supply;
- The iPod/iPhone or external audio device is disconnected when the speaker is operated on batteries.
 - ↳ The LED indicator lights off.

4 Play

Play from iPod/iPhone

You can enjoy audio from your iPod/iPhone through this docking speaker.

Compatible iPod/iPhone

The docking speaker supports the following iPod and iPhone models:

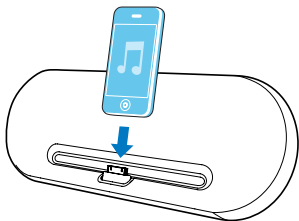
Made for:

- iPod touch (2nd, 3rd, and 4th generation)
- iPod classic
- iPod nano (1st, 2nd, 3rd, 4th, 5th, and 6th generation)
- iPhone 4S
- iPhone 4
- iPhone 3GS
- iPhone 3G

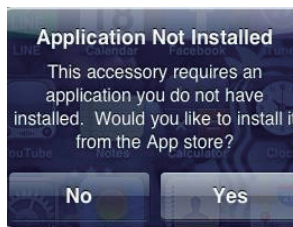
Listen to the iPod/iPhone

Philips **DockStudio** app brings a suite of new features to your docking speaker, including Internet radio and a multi-function alarm clock. To enjoy more features, you are recommended to install this free application.

- 1 Switch the power button to **ON** position.
 - ↳ The LED indicator lights up.
- 2 Insert the iPod/iPhone into the dock.



- 3 For first-time use, you will be asked to install **DockStudio** app on your iPod/iPhone.
- 4 Tap **[Yes]** (yes) to accept the installation request.
- 5 Follow the on-screen instructions to complete the installation.



- 6 Launch the app after the installation.
- 7 Play audio on your iPod/iPhone.
 - ↳ You can hear audio from this docking speaker.

Charge the iPod/iPhone

When the docking speaker is connected to power, the docked iPod/iPhone begins to charge automatically.

Play from an external audio device

With this docking speaker, you can also enjoy audio from an external device such as an MP3 player.



Note

- Make sure that no iPod/iPhone is docked in the docking speaker.

- 1 Connect an MP3 link cable (not supplied) to:
 - the **MP3-LINK** socket at the back of the docking speaker.
 - the headphone socket on an external device.

↳ The docking speaker switches to MP3 link mode automatically.
- 2 Play music on the device (see the device's user manual).

Adjust volume

During play, press **-VOLUME +** to adjust volume.

Enrich sound output

During play, switch on **DBB** to enrich sound output.

5 Product information



Note

- Product information is subject to change without prior notice.

Specifications

Amplifier

Total Output Power	2 x 5 W RMS
Signal to Noise Ratio	>60 dBA
MP3 Link	0.6V RMS 22 kohm

General information

AC Power	Model: S018KC0900200 Input: 100-240V ~ 50/60Hz, 500mA; Output: 9V === 2000 mA
Operation Power Consumption	<18 W
Eco Standby Power Consumption	<0.5 W
Max. load for iPod/iPhone	5 V === 1 A
Dimensions	
- Main Unit (W x H x D)	311 x 111 x 37.6mm
Weight	
- Main Unit	0.28 kg

6 Troubleshooting



Warning

- Never remove the casing of this device.

To keep the warranty valid, never try to repair the system yourself.

If you encounter problems when using this device, check the following points before requesting service. If the problem remains unsolved, go to the Philips Web page (www.philips.com/support). When you contact Philips, make sure that the device is nearby and the model number and serial number are available.

No power

- Ensure that the AC power plug of the unit is connected properly.
- Ensure that there is power at the AC outlet.

No sound

- Adjust the volume.

No response from the unit

- Disconnect and reconnect the AC power plug, then turn on the unit again.

7 Notice

Any changes or modifications made to this device that are not expressly approved by Philips Consumer Lifestyle may void the user's authority to operate the equipment.



“Made for iPod” and “Made for iPhone” mean that an electronic accessory has been designed to connect specifically to iPod or iPhone respectively, and has been certified by the developer to meet Apple performance standards. Apple is not responsible for the operation of this device or its compliance with safety and regulatory standards. Please note that the use of this accessory with iPod or iPhone may affect wireless performance.

iPod and iPhone are trademarks of Apple Inc., registered in the U.S. and other countries.

Disposal of your old product and batteries

Your product is designed and manufactured with high quality materials and components, which can be recycled and reused. Never dispose of your product with other household waste. Please inform yourself about the local rules on the separate collection of electrical and electronic products and batteries. The correct disposal of these products helps prevent potentially negative consequences on the environment and human health.

Your product contains batteries, which cannot be disposed of with normal household waste. Please inform yourself about the local rules on separate collection of batteries. The correct disposal of batteries helps prevent potentially negative consequences on the environment and human health.

Please visit www.recycle.philips.com for additional information on a recycling center in your area.

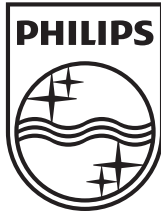
Environmental information

All unnecessary packaging has been omitted. We have tried to make the packaging easy to separate into three materials: cardboard (box), polystyrene foam (buffer) and polyethylene (bags, protective foam sheet.)

Your system consists of materials which can be recycled and reused if disassembled by a specialized company. Please observe the local regulations regarding the disposal of packaging materials, exhausted batteries and old equipment.

Note

- The type plate is located inside the stand foot of the docking speaker.



Specifications are subject to change without notice
© 2012 Koninklijke Philips Electronics N.V.
All rights reserved.

DS7520_93_UM_V1.0

