

Always there to help you

HTL5120

Register your product and get support at
www.philips.com/welcome



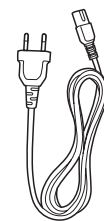
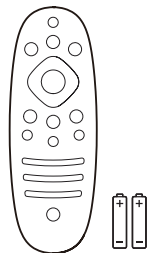
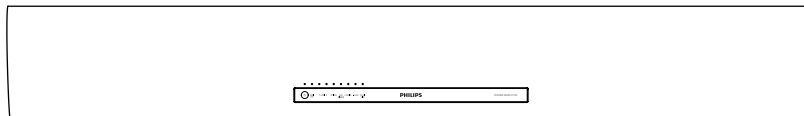
Quick start guide

PHILIPS

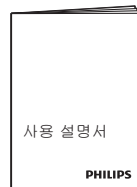
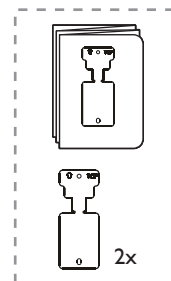


EN Before using your product, read all accompanying safety information

KO 제품을 사용하기 전에 제공된 모든 안전 정보를 숙지하십시오



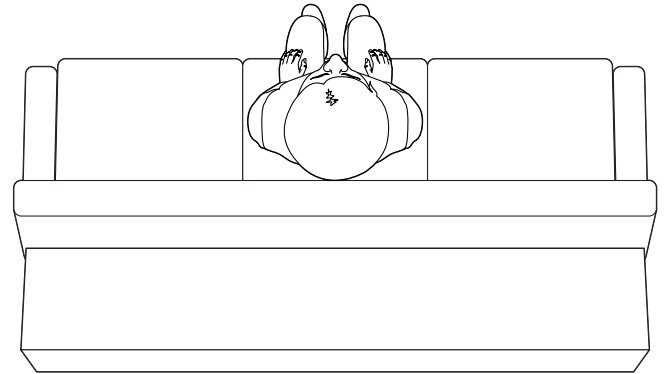
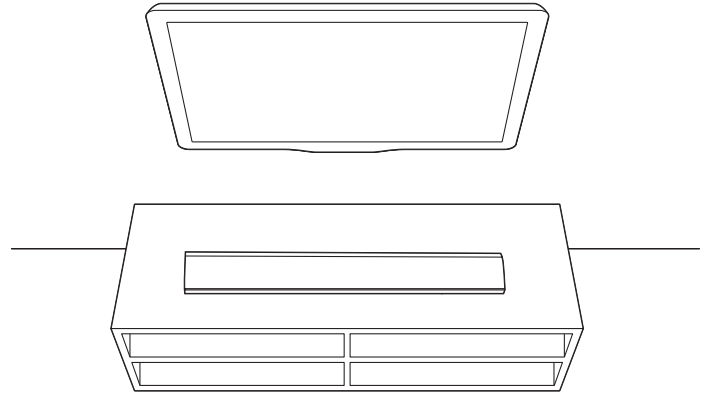
Power Cord



1

EN Position the SoundBar

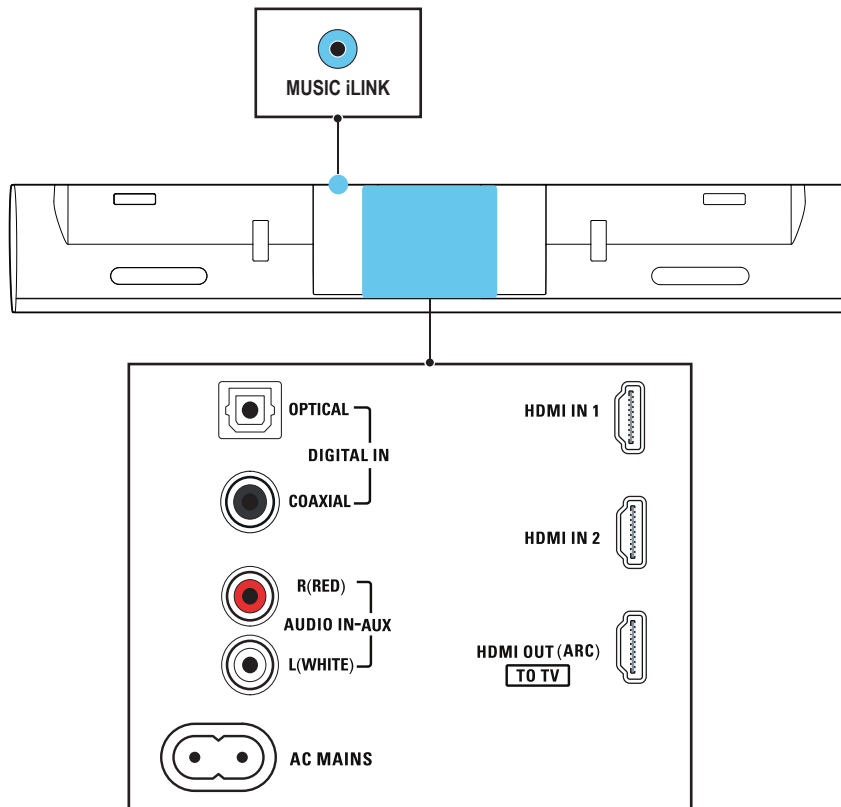
KO 사운드바 배치



2

EN Connect the SoundBar

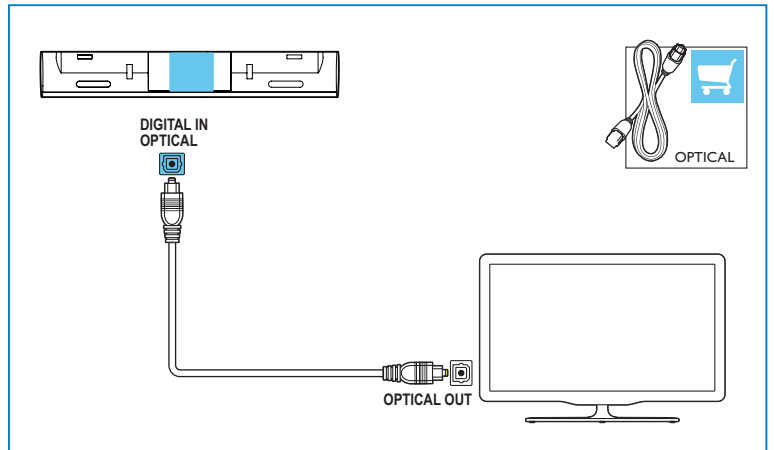
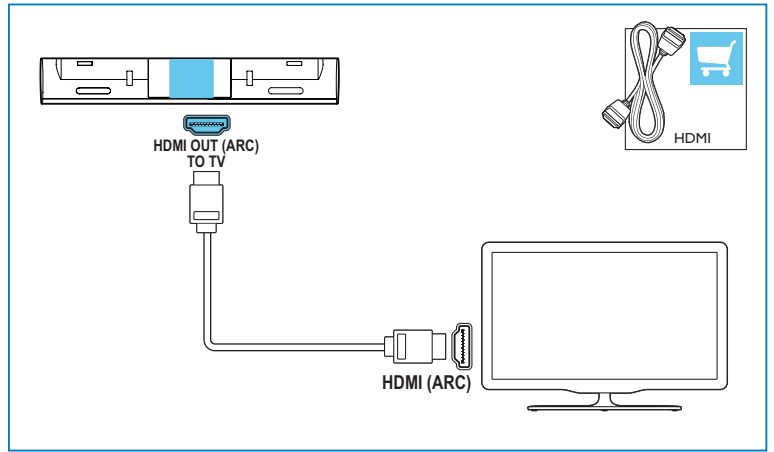
KO 사운드바 연결



3

EN Hear audio from TV in one of the following ways

KO 다음 중 한 가지 방법으로 TV 오디오 청취

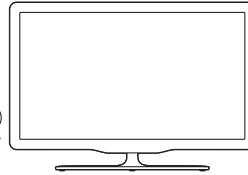




DIGITAL IN
COAXIAL

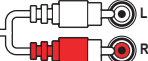
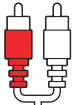


COAXIAL OUT

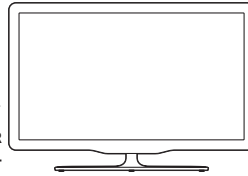


AUDIO IN-AUX

R L



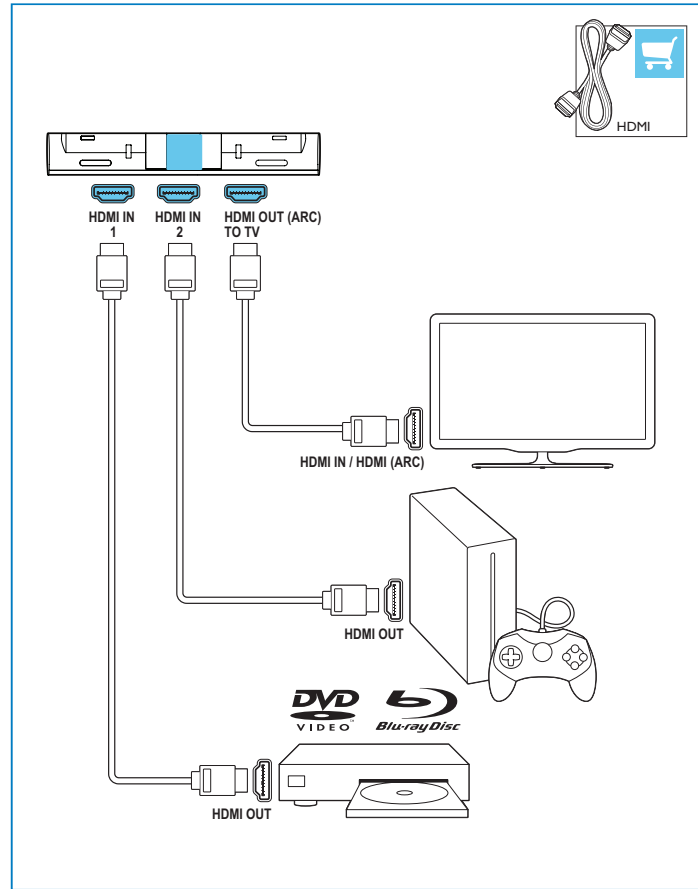
AUDIO OUT



4

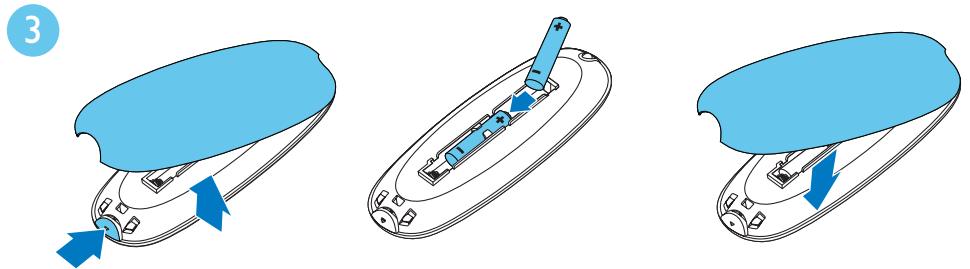
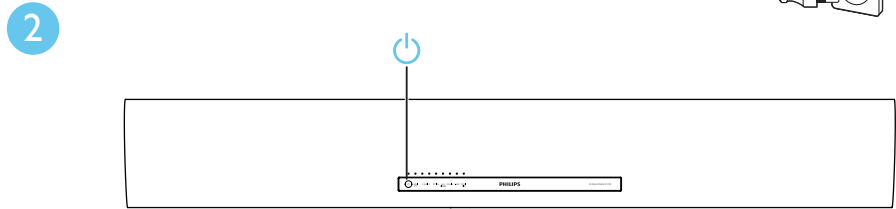
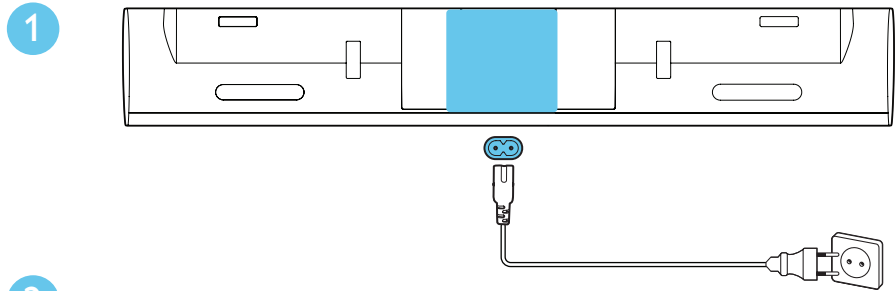
EN Enjoy audio and video from your devices

KO 장치의 오디오 및 비디오 감상



5

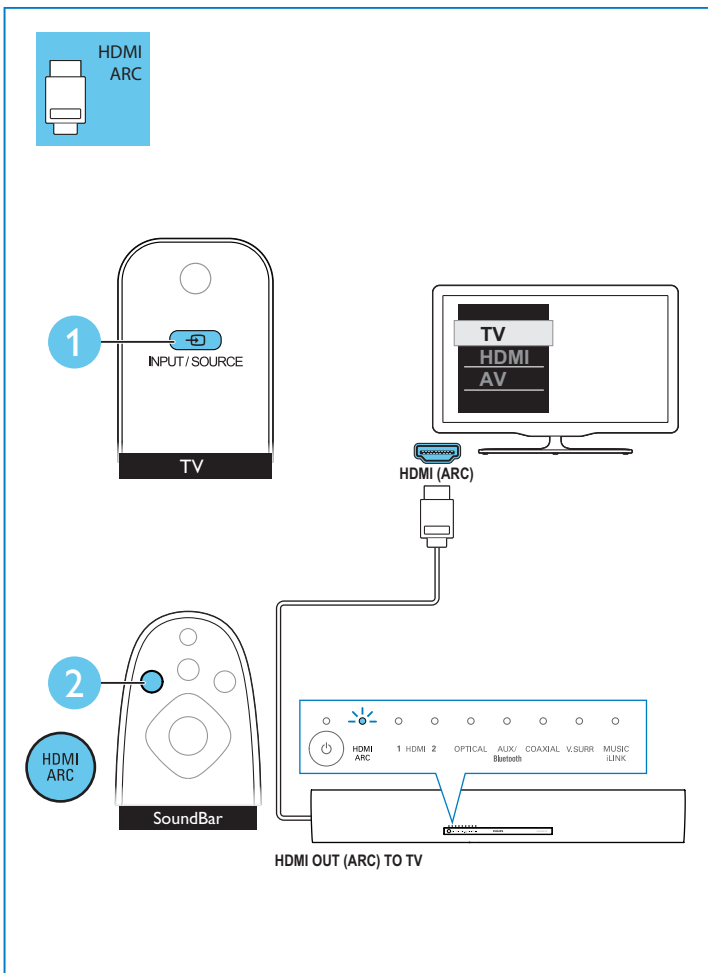
EN Switch on the SoundBar
KO 사운드바 켜기

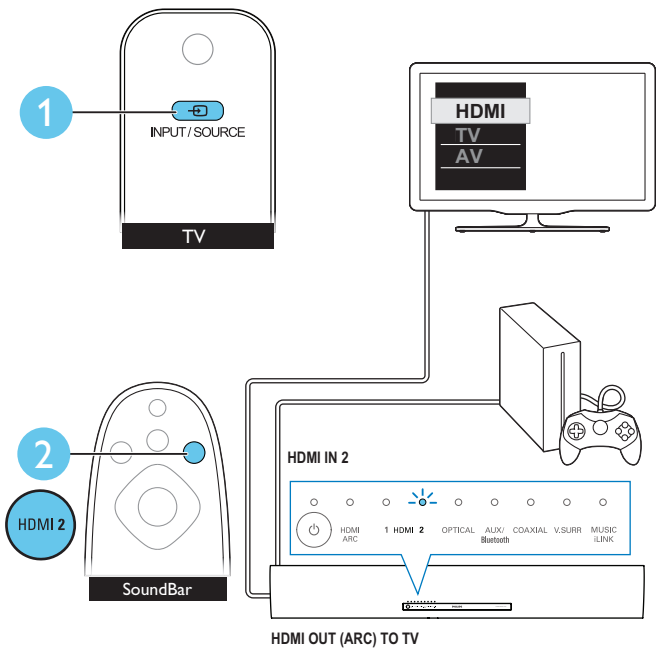
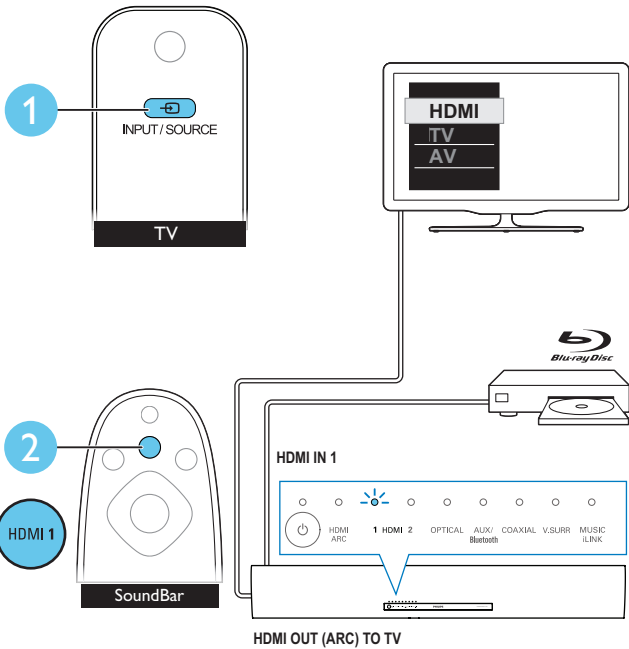


6

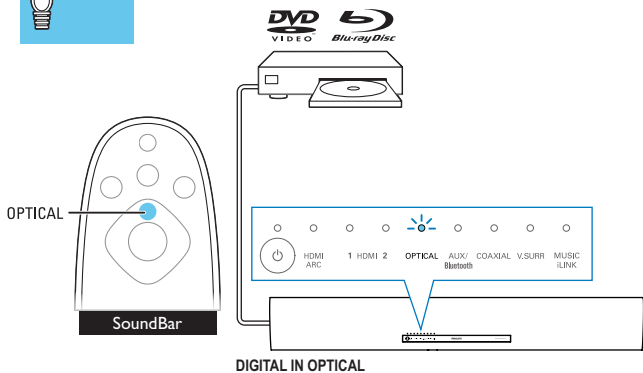
EN Select the correct audio source

KO 정확한 음원 선택

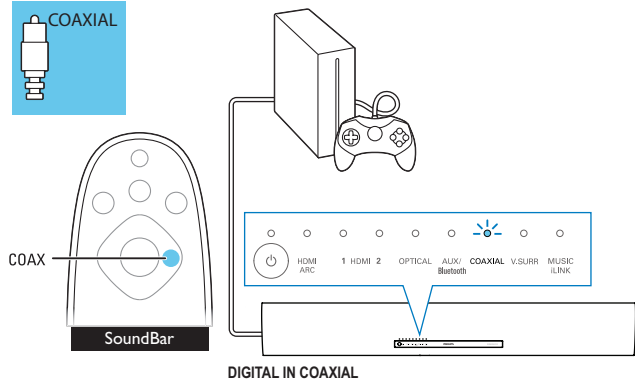




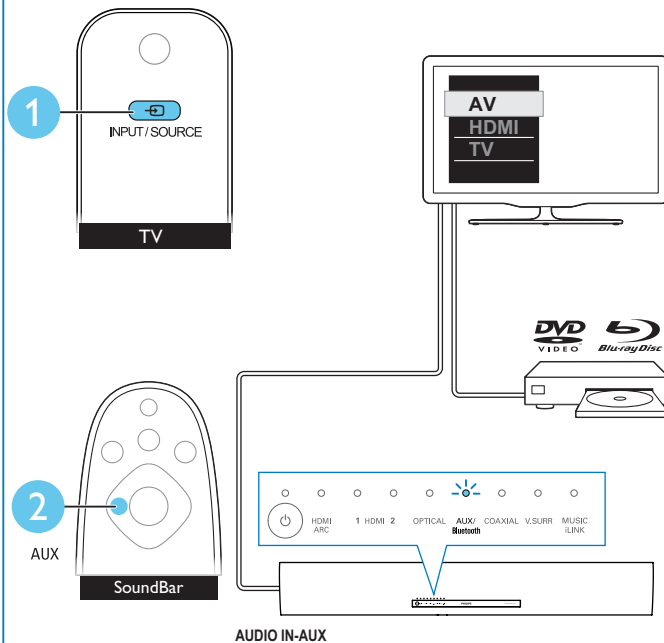
OPTICAL



COAXIAL



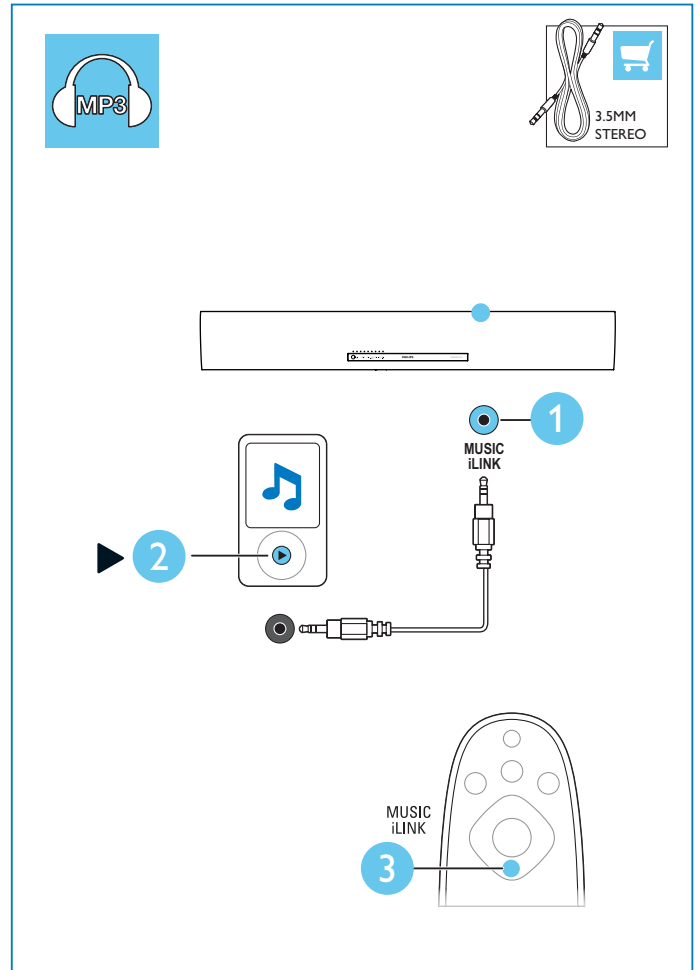
AUX



7

EN Play other devices

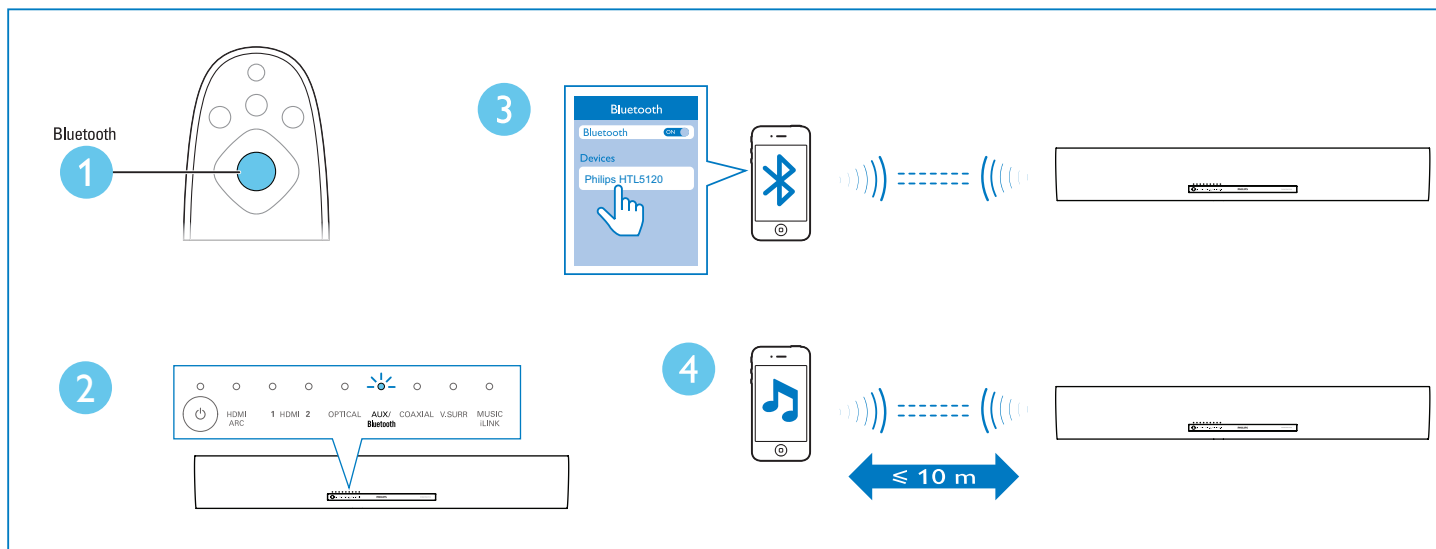
KO 기타 장치 재생



8

EN Play audio through Bluetooth

KO Bluetooth를 통한 오디오 재생





EN For more information about using this product,
visit www.philips.com/support

KO 본 제품의 자세한 사용 방법을 확인하려면
www.philips.com/support를 방문하십시오.



www.philips.com/support



Manufactured under license under U.S. Patent Nos: 5,956,674; 5,974,380; 6,487,535 & other U.S. and worldwide patents issued & pending. DTS, the Symbol, & DTS and the Symbol together are registered trademarks & DTS Digital Surround and the DTS logos are trademarks of DTS, Inc. Product includes software. © DTS, Inc. All Rights Reserved.



Manufactured under license from Dolby Laboratories. Dolby and the double-D symbol are trademarks of Dolby Laboratories.



The terms HDMI and HDMI High-Definition Multimedia Interface, and the HDMI Logo are trademarks or registered trademarks of HDMI Licensing LLC in the United States and other countries.



The Bluetooth® word mark and logos are registered trademarks owned by Bluetooth SIG, Inc. and any use of such marks by Philips is under license. Other trademarks and trade names are those of their respective owners.



Non-contractual images. / Images non contractuelles. / Außervertragliche Bilder.
All registered and unregistered trademarks are property of their respective owners.
Specifications are subject to change without notice
Trademarks are the property of Koninklijke Philips Electronics
N.V. or their respective owners
2013 © Koninklijke Philips Electronics N.V. All rights reserved
www.philips.com
HTL5120_61_QSG_V1.0

