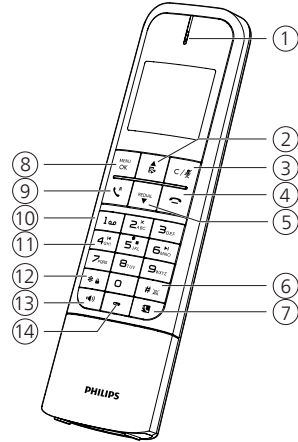




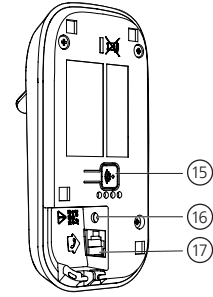
## 1 Overview



### In call/Standby

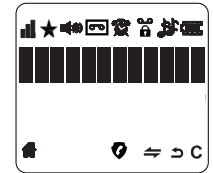
- 1 Earpiece
- 2 Call log / Up
- 3 Mute/unmute the microphone or stop the alarm

- 4 End calls
- 5 Access the redial list / Down
- 6 Mute/unmute the ringer
- 7 Access the phonebook
- 8 Enter the option menu
- 9 Recall (network dependent)
- 10 Access voice mails
- 11 Message Keys (M475 only)
  - 2 - Delete
  - 4 - Repeat
  - 5 - Play /Stop
  - 6 - Skip
- 12 Lock/unlock the keypad (press and hold)
- 13 Turn the speaker on/off
- 14 Microphone



- 15 Find all handsets
- 16 DC power jack
- 17 Telephone line jack

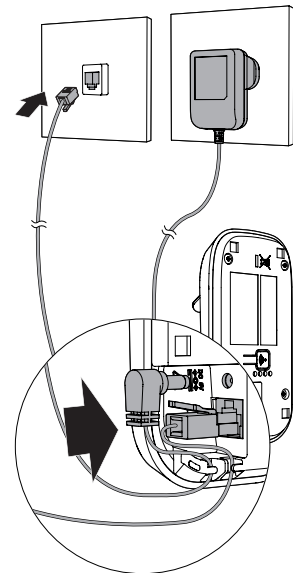
### Display icons



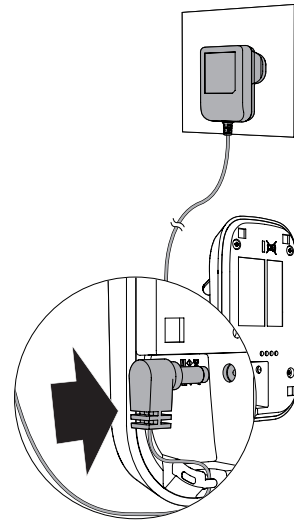
- It displays the connection between the handset and the base. The more bars are shown, the better the signal strength is.
- It displays when the line is in use. It flashes when there is an incoming call.

- The speaker is on.
- M475 only: It is displayed when answering machine [TAM] is on. It flashes when there is a new message.
- The alarm is on.
- Voice messages indicator: it flashes when there is a new message (network dependent).
- The keypad is locked.
- The ringer is off.
- The battery is low and needs charging.
- The battery is fully charged.
- The call blocker is on.
- Press for an intercom call within 2 or up to 4 handsets.
- Press to go back to the previous menu or cancel the current operation.
- When displays, press to clear a character or digit.

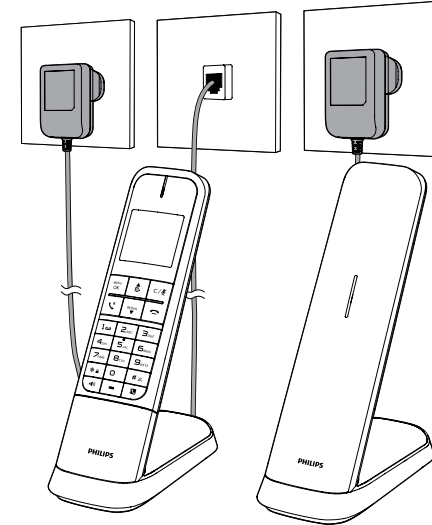
## 2 Connect



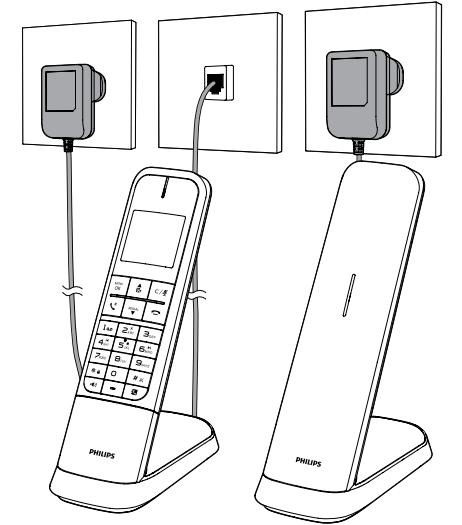
M470/M475



Charger



M470

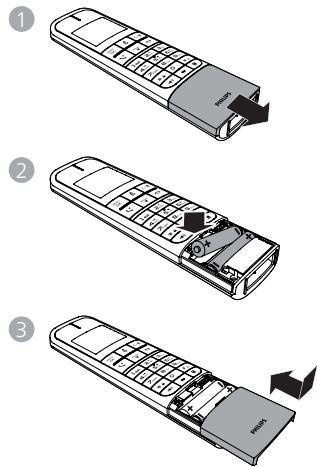


M475



### 3 Get started

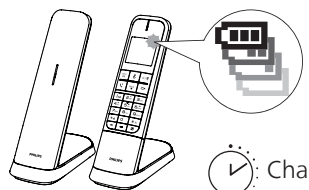
#### Insert batteries



#### Configure your phone

1. Set the language when prompted.
2. Set the date and time:  
Press **MENU** > **[HS SETTINGS]** > **MENU** > **[DATE & TIME]** > follow on-screen instructions.

#### Charge handset either way around



Charge 8 hours

> 70%    10% - 40%

40% - 70%    < 10%

Flashing : low battery

Scrolling: charging in progress

#### Note

- You can install a DSL (digital subscriber line) filter to prevent noise and caller ID problems caused by the DSL interference.
- You can find the Declaration of Conformity on [www.philips.com/support](http://www.philips.com/support)

### 4 Operate

#### Make /Answer /End a call

- To make a call, press or and dial the number.
- To answer a call, press or when the phone rings.
- To end a call, press .

#### Adjust the earpiece volume

- Press or to adjust the volume during a call.

#### Phonebook

##### Add a contact in the phonebook

1. Press > **MENU** > **[ADD]**.
2. Follow on-screen instructions.

##### Make a call from the phonebook

1. Press .
2. Select a record and press .

#### Call log

##### View a call log entry

- Press > **MENU** > **[DETAILS]**.

##### Save a call log entry to phonebook

1. Press > **MENU** > **[ADD TO PB]**.
2. Follow on-screen instructions.

##### Make a call from the call log

1. Press .
2. Select a record and press .

##### Delete a call log entry

1. Press > **MENU** > **[DELETE]**.
2. Follow on-screen instructions.

#### Redial list

##### Make a call from the redial list

1. Press .
2. Select a record and press .

#### Save a redial list entry to phonebook

1. Press > **MENU** > **[ADD TO PB]**.
2. Follow on-screen instructions.

#### Delete a redial entry

1. Press > **MENU** > **[DELETE]**.
2. Follow on-screen instructions.

#### Call blocker

If you subscribe to Caller ID service, you can block calls by adding the numbers to the Black List. You can also block or allow certain types of calls.

#### Set block mode

1. Press > **[CALL BLOCKER]** > **[SETTINGS]** > **[BLOCK MODE]**.
2. Follow on-screen instructions.

#### Set type of calls to be blocked

1. Press > **[CALL BLOCKER]** > **[SETTINGS]** > **[CALL TYPE]**.
2. Follow on-screen instructions.

#### Add number to Black List

1. Press > **[CALL BLOCKER]** > **[BLACK LIST]** > **[ADD]**.
2. Follow on-screen instructions.

#### Register additional handsets

You can register additional handsets to the base station.

1. Press .
2. Select **[REGISTRATION]**, enter PIN **0000**.
3. **Press and hold** () on the base bottom for 5 seconds.

#### Restore default settings

You can reset your phone settings to the original factory settings.

1. Press .
2. Select **[DEFAULT]**, enter PIN **0000** to confirm.
3. Follow on-screen instructions.

### 5 Answering machine (M475 only)

#### Turn on/off the answering machine

1. Press > **[ANS. MACHINE]** > **[TAM ON/OFF]**.
2. Follow on-screen instructions.

#### Set answer mode

1. Press > **[ANS. MACHINE]** > **[TAM SETTINGS]** > **[ANSWER MODE]**.
2. Follow on-screen instructions.

#### Play recorded messages

1. Press > **[ANS. MACHINE]** > **[MSG PLAYBACK]**.
2. Follow on-screen instructions.

#### Record a memo

1. Press > **[ANS. MACHINE]** > **[MEMO]**.
2. Follow on-screen instructions.

#### Technical data

**Battery:** 2 x AAA Ni-MH 1.2V 500 mAh rechargeable batteries

Use only the supplied batteries.

**Base and charger adapters:** Jiangxi Jian Aohai Technology Co., Ltd.

A318-060045W-UK1

Input: 100-240V AC 50/60Hz 0.15A Output: 6VDC 0.45A 2.7W

**Phonebook** with 50 entries

**Call log** with 20 entries

**Talk time:** 14 hours

**Standby time:** 180 hours

**DECT technology**

Frequency Bands: 1881.792-1897.344MHz

Max power: 21.9 dBm

Modulation Mode: GFSK

Antenna Type: Integrated antenna

Antenna Gain: 0dBi

Operating temperature range: 0° C to 40° C



[www.philips.com/support](http://www.philips.com/support)

To access the user instructions online, use the reference model number written on the product label at the bottom of the base station.

### Important safety instructions

#### Warning

- The electrical network is classified as hazardous. The only way to power down the charger is to unplug the power supply from the electrical outlet. Ensure that the electrical outlet is always easily accessible.
- Refer to safety information before using the product.
- Hereby, TP Vision Europe B.V. declares that the product is in compliance with the essential requirements and other relevant provisions of RED Directive 2014/53/EU and UK Radio Equipment Regulations SI 2017 No 1206. You can find the Declaration of Conformity on [www.philips.com/support](http://www.philips.com/support).
- Use only the power supply listed in the user instructions.
- Use only the batteries listed in the user instructions.
- Do not allow the product to come into contact with liquids.
- Risk of explosion if battery is replaced by an incorrect type.
- Dispose of used batteries according to the instructions.
- When the handset rings or when the handsfree is activated, keep the handset away from your ear to avoid hearing damage.
- SAR value < 0.1W/kg

#### Care of the environment

Disposal of your old product and battery

Your product is designed and manufactured with high quality materials and components, which can be recycled and reused.

This symbol means the product must not be discarded as household waste and should be delivered to an appropriate collection facility recycling.

This symbol means that the product contains batteries covered by European Directive 2013/56/EU which cannot be disposed of with normal household waste.

#### Information on the safety of users and non-users:

Compliance with specific usage restrictions on certain places (hospitals, planes, petrol stations, schools...). Precautions to be taken by electronic implants wearers (cardiac stimulators, insulin pumps, neurostimulators...), concerning in particular the distance between the radio equipment and the implant (15 centimeters in the case of the strongest sources of exposure such as mobile phones).

#### Information on the behaviors to follow to reduce exposure to radiation emitted by equipment:

Use your device in good reception conditions to reduce the amount of radiation received. Make reasoned use of radio equipment, such as mobile phones by children and teens, for example by avoiding night-time communications and limiting the frequency and duration of calls. Keep radio equipment away from the womb of pregnant women. Keep radio equipment away from teenagers' lower abdomens.