

Register your product and get support at  
[www.philips.com/welcome](http://www.philips.com/welcome)

**Immersive**  
5000 series



# Quick start guide

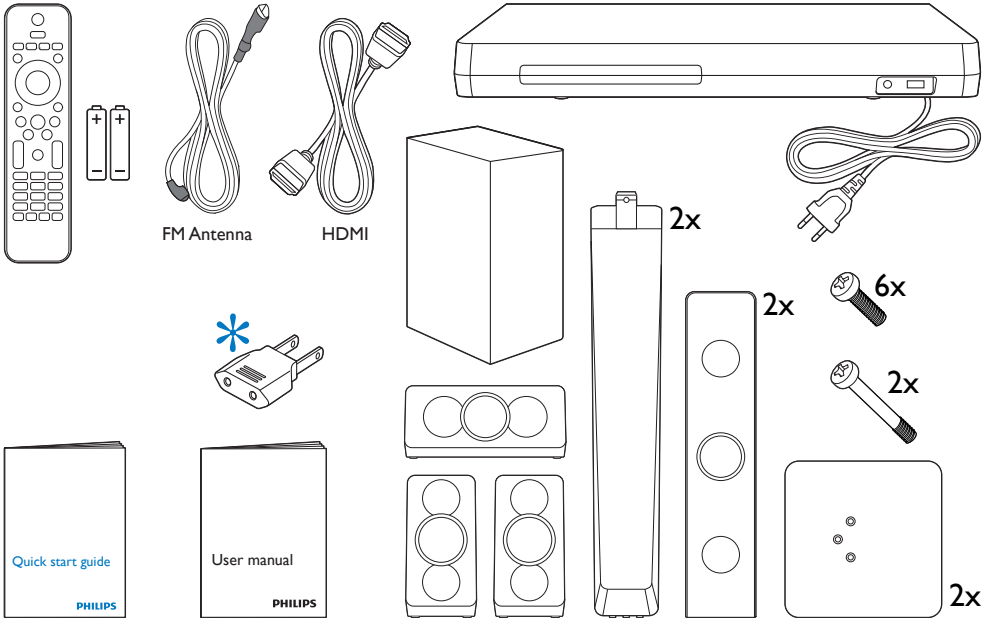
**PHILIPS**



**EN** Before using your product, read all accompanying safety information

**ES** Antes de usar el producto, consulte la información de seguridad que se encuentra adjunta

**PT** Antes de usar o produto, leia todas as informações de segurança em anexo



\* Adaptador fornecido como acessório não deverá ser usado nas redes elétricas do Brasil, seu uso é destinado exclusivamente a outros países da América Latina.

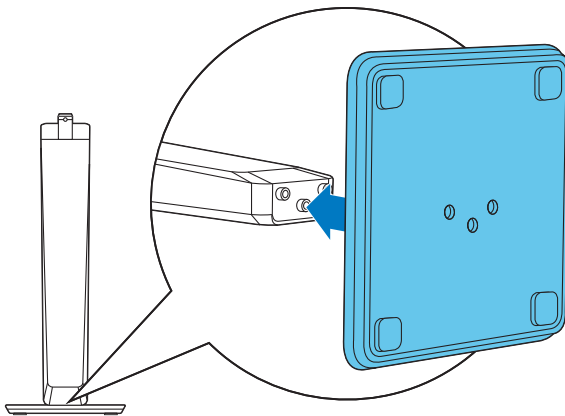
# 1

**EN** Stand mount the speakers

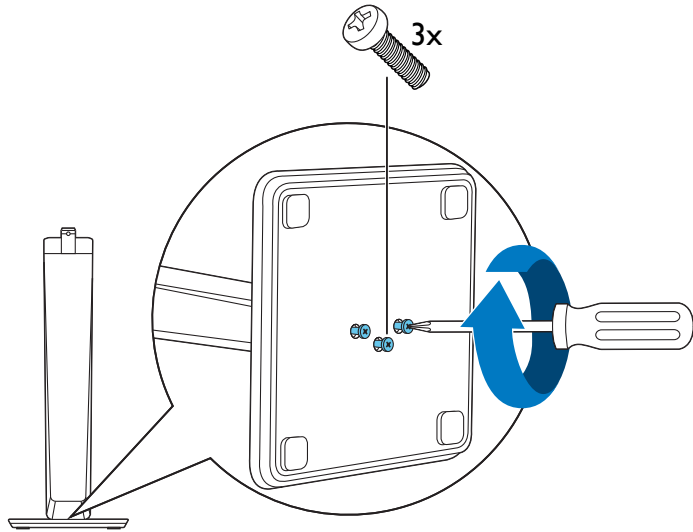
**ES** Montaje de los altavoces en el soporte

**PT** Montar as caixas acústicas

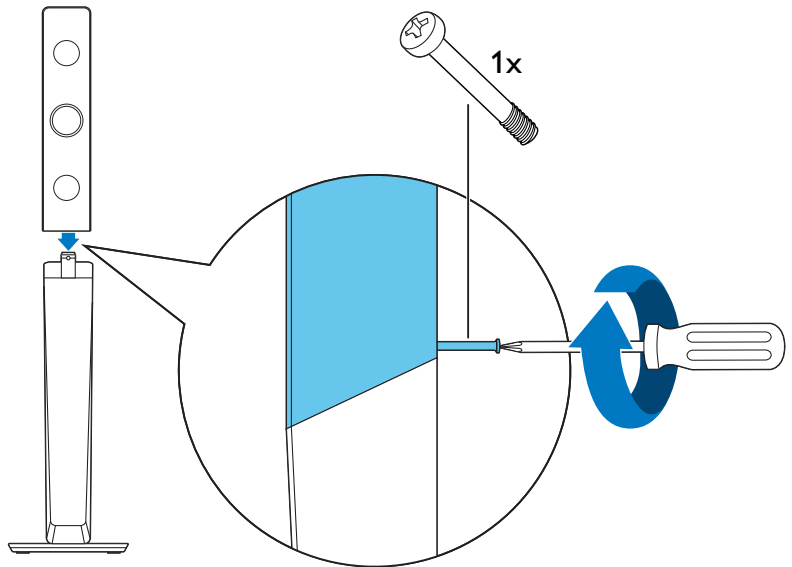
# 1



2

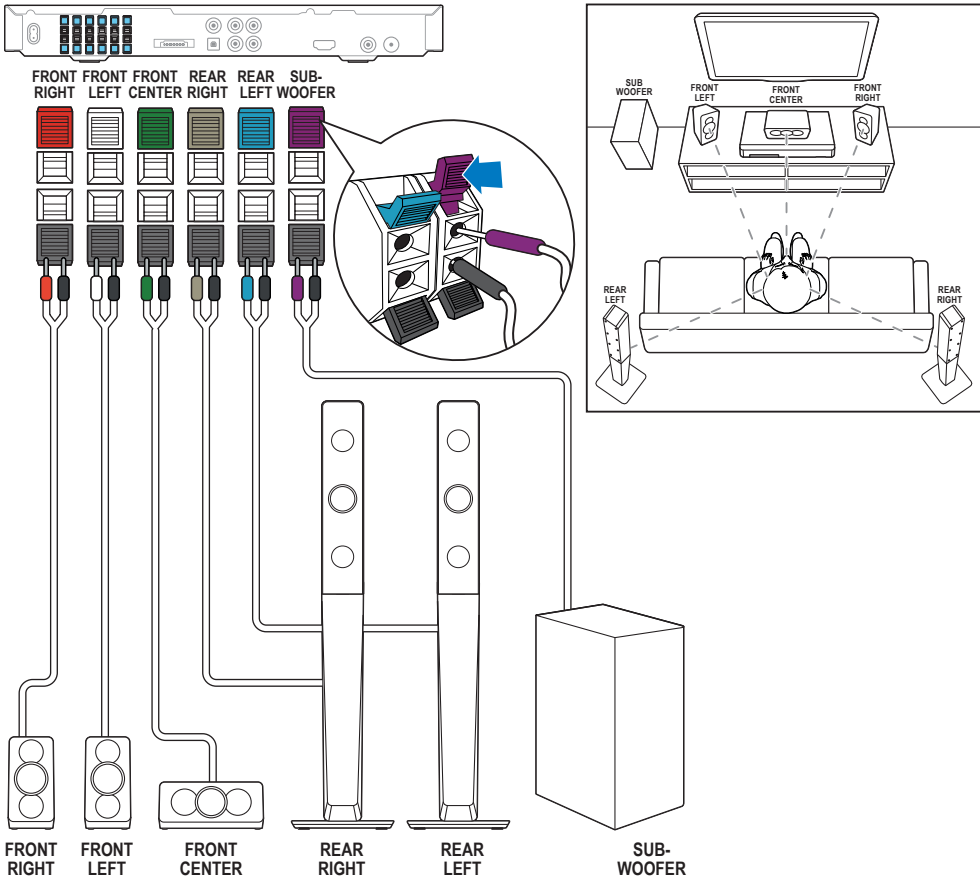


3



# 2

- EN** Connect the home theater
- ES** Conecte el sistema de cine en casa
- PT** Conectar o Home Theater

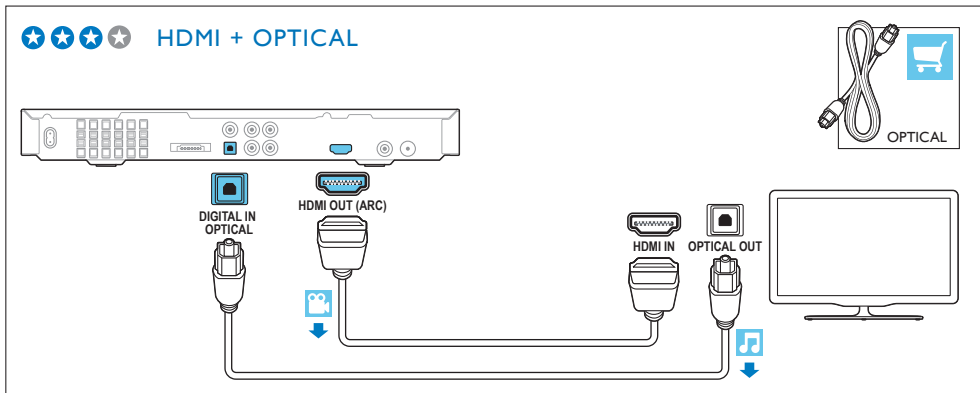
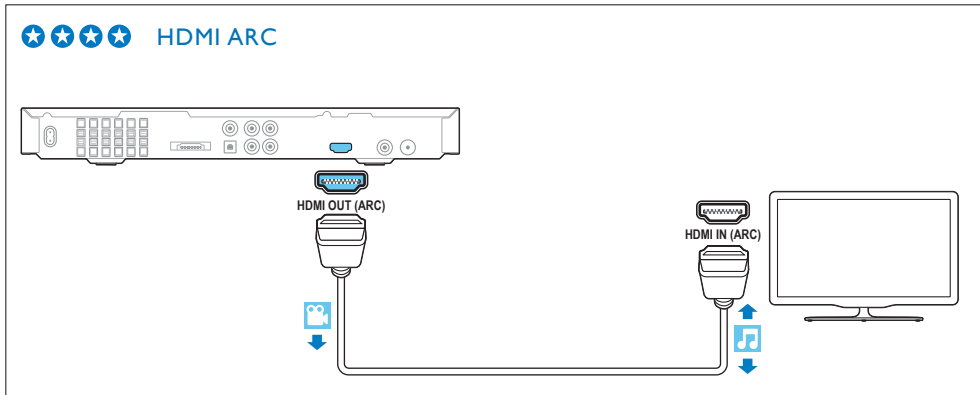


# 3

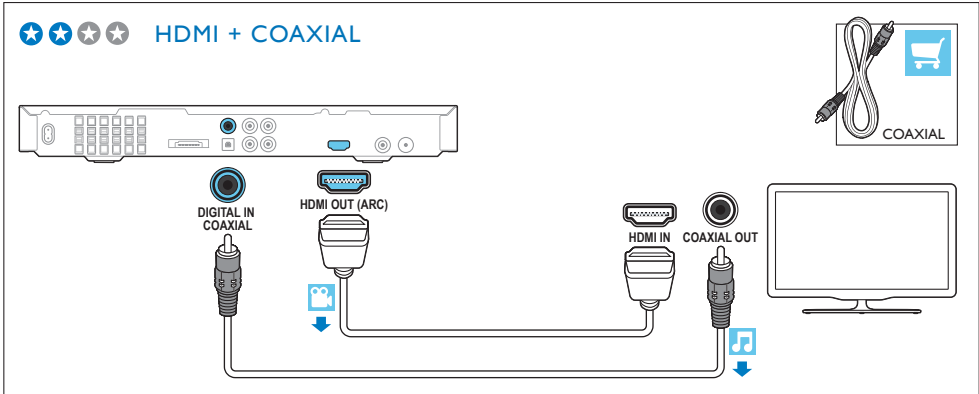
**EN** Connect to TV in one of these ways

**ES** Conecte al TV de alguna de las siguientes maneras

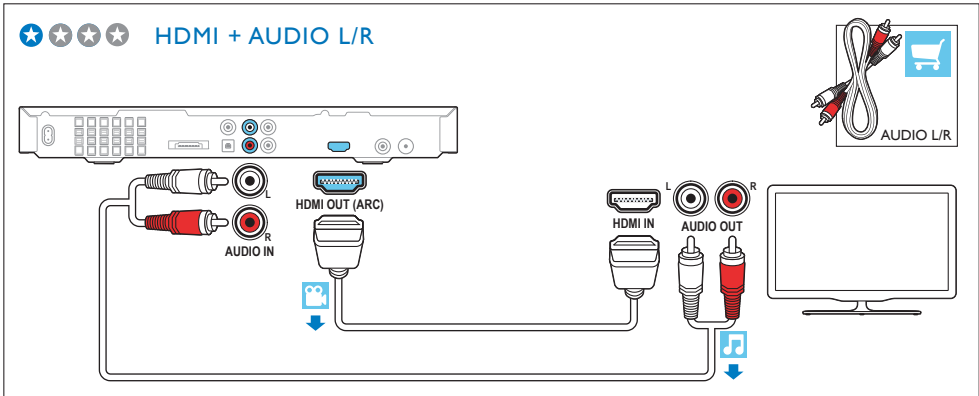
**PT** Conecte à TV de uma destas maneiras



★ ★ ★ ★ HDMI + COAXIAL



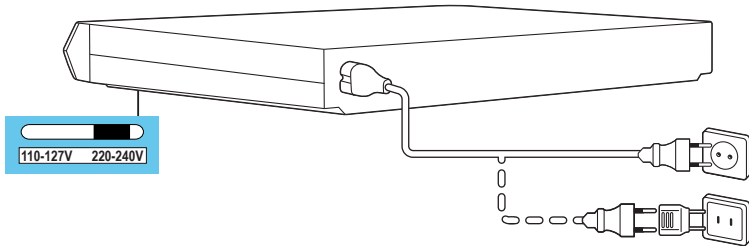
★ ★ ★ ★ HDMI + AUDIO L/R



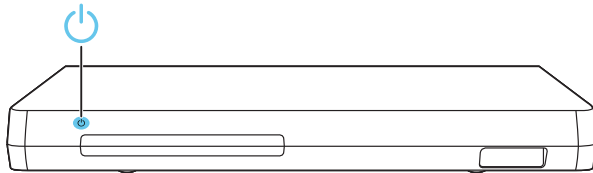
# 4

- EN** Switch on the home theater
- ES** Encienda el sistema de cine en casa
- PT** Ligar o Home Theater

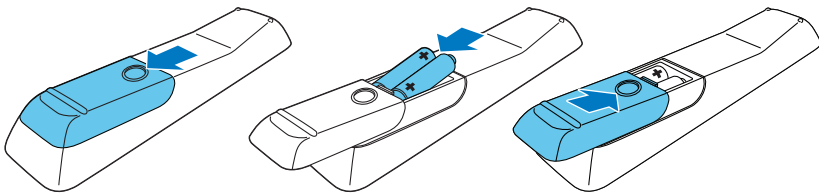
1



2



3



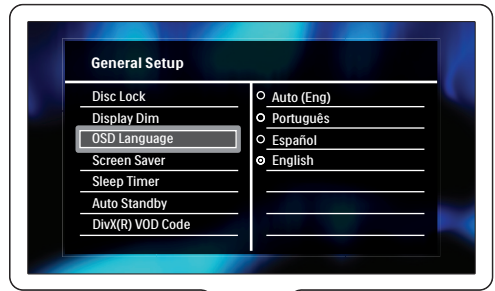
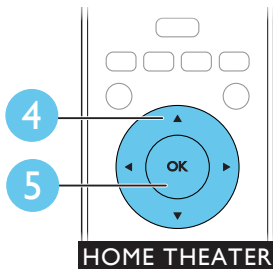
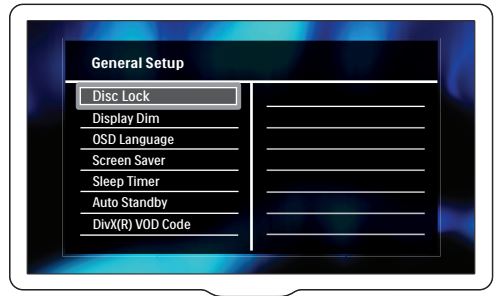
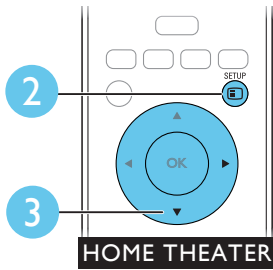
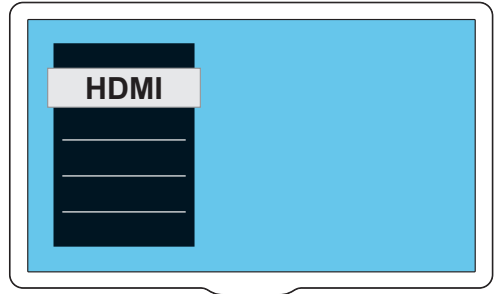
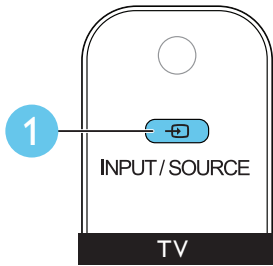


# 5

**EN** Complete the first time setup

**ES** Complete la configuración inicial

**PT** Fazer a configuração inicial

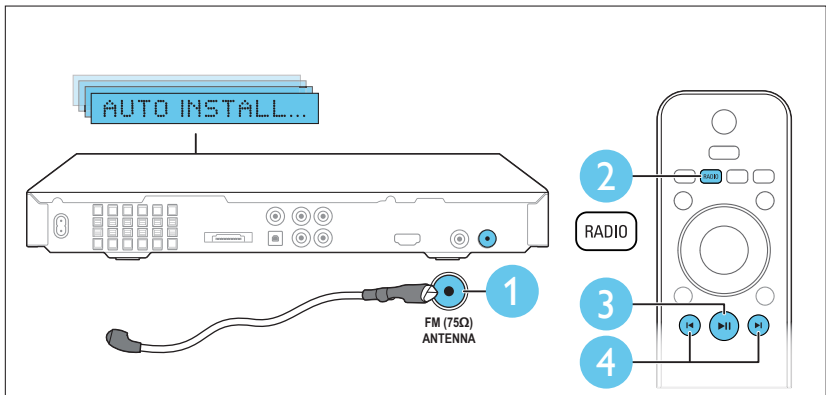
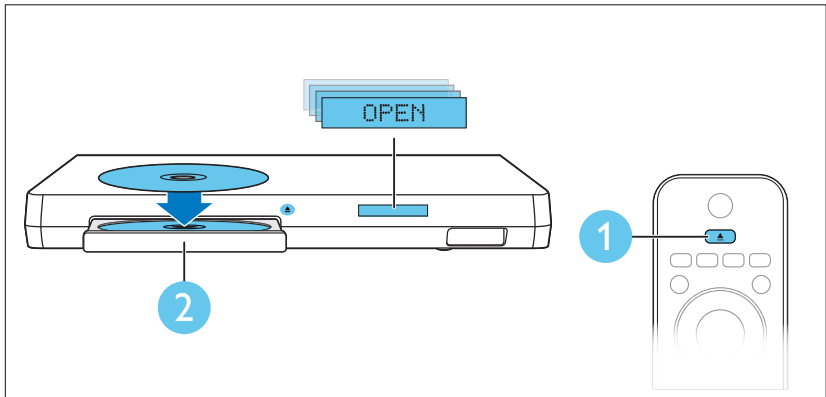


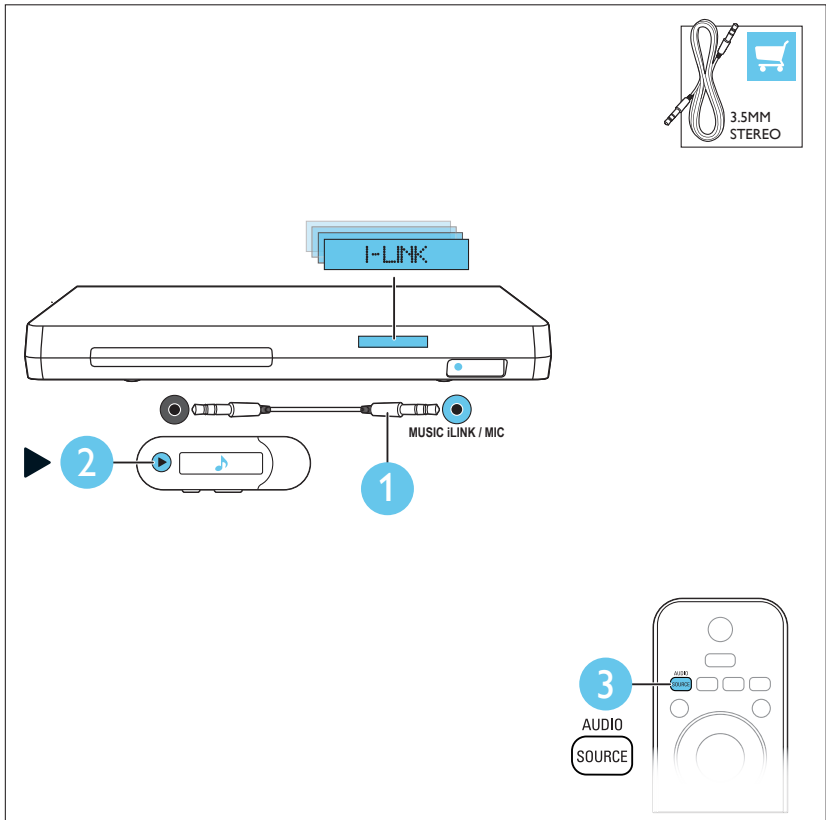
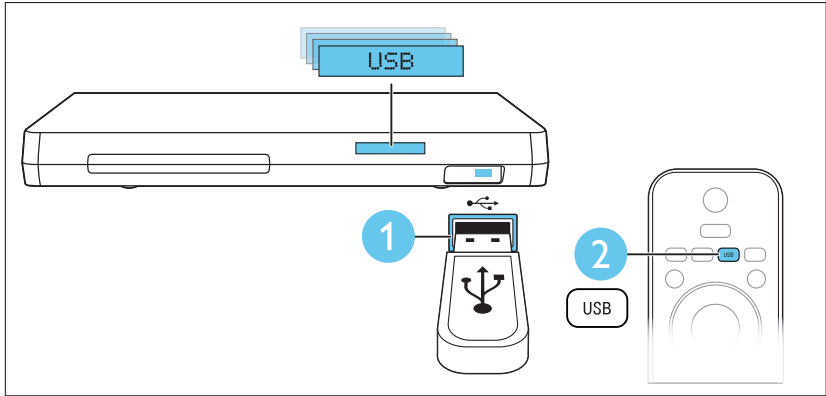
# 6

**EN** Use your home theater

**ES** Use el sistema de cine en casa

**PT** Usar o Home Theater







**EN** For more information about using this product visit [www.philips.com/support](http://www.philips.com/support)

**ES** Para obtener más información sobre el uso de este producto, visite [www.philips.com/support](http://www.philips.com/support)

**PT** Para obter mais informações sobre o uso deste produto, visite o site [www.philips.com/support](http://www.philips.com/support)



[www.philips.com/support](http://www.philips.com/support)



Non-contractual images. / Images non contractuelles. /  
Außervertragliche Bilder.

All registered and unregistered trademarks are property  
of their respective owners.

Specifications are subject to change without notice  
Trademarks are the property of Koninklijke Philips Electronics  
N.V. or their respective owners  
2012 © Koninklijke Philips Electronics N.V. All rights reserved  
[www.philips.com](http://www.philips.com)  
sgsn\_1151/55\_v1

Evite o uso prolongado do aparelho  
com volume superior a 85 decibéis, pois  
isto poderá prejudicar a sua audição.  
Potência total de saída de  
1000W RMS (+/- 0.5dB, 30% THD)



Be responsible  
Respect copyrights

