

# Көмектесу үшін әрдайым осындамын

Өнімді мына жерде тіркеп, оған қолдау алыңыз:

[www.philips.com/welcome](http://www.philips.com/welcome)

FWD410/51

Сұрағыңыз  
бар ма? Philips  
компаниясына  
хабарласыңыз



## Қолданушының нұсқасы

# PHILIPS



# Мазмұндар кестесі

<b>1 Маңызды ақпарат</b>	4
Қауіпсіздік	4
Ескерту	5
<b>2 Your DVD Mini Hi-Fi System</b>	8
Introduction	8
What's in the box	8
Overview of the main unit	9
Overview of the remote control	10
<b>3 Қосы</b>	12
Place the unit	12
Connect speakers	12
Connect video cables	12
Optional connections	13
Connect power	14
<b>4 Жұмысты бастау</b>	15
Prepare the remote control	15
Turn on	15
Find the correct viewing channel	15
Select the correct TV system	15
Change system menu language	16
Turn on progressive scan	16
<b>5 Play</b>	17
Play a disc	17
Play from USB or recored discs	17
Play a slideshow with background music	18
Play control	18
Play options	19
Picture view options	19
<b>6 Радио тыңдау</b>	20
Store radio stations automatically	20
Tune to a radio station	20
Program radio stations	20
Tune to a preset radio station	21
Change tuning grid	21

<b>7 Adjust sound</b>	21
Adjust volume level	21
Select a sound effect	21
Mute sound	21
<b>8 Adjust settings</b>	22
General setup	22
Audio setup	22
Video setup	22
Preference setup	23
<b>9 Басқа мүмкіндіктер</b>	24
Set the sleep timer	24
Listen to an audio device	24
<b>10 Өнім туралы ақпарат</b>	25
Ерекшеліктер	25
Supported disc formats	25
USB playability information	26
<b>11 Troubleshooting</b>	27

# 1 Маңызды ақпарат

## Қауіпсіздік

### Know these safety symbols



This 'bolt of lightning' indicates uninsulated material within your unit may cause an electrical shock. For the safety of everyone in your household, please do not remove product covering.



The 'exclamation point' calls attention to features for which you should read the enclosed literature closely to prevent operating and maintenance problems.

**WARNING:** To reduce the risk of fire or electric shock, this apparatus should not be exposed to rain or moisture and objects filled with liquids, such as vases, should not be placed on this apparatus.

**CAUTION:** To prevent electric shock, match wide blade of plug to wide slot, fully insert.

## Important Safety Instructions

- ① Read these instructions.
- ② Keep these instructions.
- ③ Heed all warnings.
- ④ Follow all instructions.
- ⑤ Do not use this apparatus near water.
- ⑥ Clean only with dry cloth.
- ⑦ Do not block any ventilation openings. Install in accordance with the manufacturer's instructions.
- ⑧ Do not install near any heat sources such as radiators, heat registers, stoves, or other apparatus (including amplifiers) that produce heat.
- ⑨ Protect the power cord from being walked on or pinched, particularly at plugs, convenience receptacles, and the point where they exit from the apparatus.
- ⑩ Only use attachments/accessories specified by the manufacturer.
- ⑪ Use only with the cart, stand, tripod, bracket, or table specified by the manufacturer or sold with the apparatus. When a cart is used, use caution when moving the cart/apparatus combination to avoid injury from tip-over.



- ⑫ Unplug this apparatus during lightning storms or when unused for long periods of time.
- ⑬ Refer all servicing to qualified service personnel. Servicing is required when the apparatus has been damaged in any way, such as power-supply cord or plug is damaged, liquid has been spilled or objects have fallen into the apparatus, the apparatus has been exposed to rain or moisture, does not operate normally, or has been dropped.

- ⑭ **Battery usage CAUTION – To prevent battery leakage which may result in bodily injury, property damage, or damage to the unit:**

- Install all batteries correctly, + and - as marked on the unit.
- Do not mix batteries (old and new or carbon and alkaline, etc.).
- Remove batteries when the unit is not used for a long time.

- ⑮ **Apparatus shall not be exposed to dripping or splashing.**

- ⑯ **Do not place any sources of danger on the apparatus (e.g. liquid filled objects, lighted candles).**

- ⑰ **Where the MAINS plug or an appliance coupler is used as the disconnect device, the disconnect device shall remain readily operable.**

Қатты қызып кету қаупі бар! Бұл құралды тар жерде орнатуға болмайды. Желдетілуі үшін, құралдың айналасында міндетті түрде кемінде 10 сантиметр орын қалдырыңыз. Құралдағы желдеткіш тесіктердің перделер немесе басқа заттармен жабылып қалмауын қадағалаңыз.



### Ескерту

- Осы жердегіден басқа басқару элементтерін, реттеулерді пайдалану немесе техникалық қызмет көрсету процедураларын орындау зиянды радиацияның шығуын немесе қауіпсіз жұмысты тудыруы мүмкін.



### Абайлаңыз

- Never remove the casing of this unit.
- Never lubricate any part of this unit.
- Place this unit on a flat, hard and stable surface.
- Never place this unit on other electrical equipment.
- Only use this unit indoors. Keep this unit away from water, moisture and liquid-filled objects.
- Keep this unit away from direct sunlight, naked flames or heat.
- Never look into the laser beam inside the unit.

## Ескерту



This product is in compliance with the essential requirements and other relevant provisions of Directives 2006/95/EC (Low Voltage), 2004/108/EC (EMC).

WOOX Innovations тікелей рұқсат бермеген құрылғыға енгізілген қандайда бір өзгерістер немесе түрлендірулер пайдаланушының жабдықты пайдалану құқығынан айыруы мүмкін.

Philips және Philips Shield Emblem — Koninklijke Philips N.V. компаниясының тіркелген сауда белгілері және оларды WOOX Innovations Limited компаниясы Koninklijke Philips N.V. компаниясынан алған лицензия бойынша пайдаланады.

Техникалық сипаттамалары ескертусіз өзгертіледі. WOOX кез келген уақытта бұрынғы жеткізілген жабдықтарды тиісінше реттеу міндетінсіз өнімдерді өзгерту құқығын өзінде қалдырады.

## Ескірген бұйымдарды және батареяларды жою.



Бұйымыңыз басқа мақсатқа және қайта қолдануға мүмкін жоғары сапалы материалдармен және бөлшектермен әзірленіп жасалған.



Бұйымдағы сызылған дөңгелекшелі қоқыс жәшігінің белгісі көрінсе, ол бұйымдың Еуропалық 2002/96/ЕС нұсқауына сәйкес оралғанын білдіреді. Электр және электрондық бұйымдарды қоқысқа лақтыру жергілікті ережелерімен танысып алыңыз.

Жергілікті ережелерді сақтап, ескірген бұйымдарды әдепкі қоқысқа қоспай, жеке лақтыруыңызды өтінеміз.

Ескі бұйымыңызды қоқысқа дұрыс тастау қоршаған ортаға және адам денсаулығына кері әсерін тигізуден сақтайды.



Сіздің бұйымыңызда 2006/66/EC Еуропалық директивасына сәйкестендірілген қондырылған қайта жандандыруға болатын батарея бар, оны кәдімгі тұрмыстық қалдық ретінде лақтыруға болмайды.

Батареяларды қоқысқа тастау жергілікті ережелерімен танысып алыңыз.

Себебі бұйымдарды қоқысқа лақтыру ережелерін сақтау қоршаған ортаға және адам денсаулығына көрсететін кері әсерлерден сақтайды.

**Батареяларды пайдалану туралы ақпарат:**



#### Ескерту

- Ағу қаупі: батареялардың тек көрсетілген түрін пайдаланыңыз. Жаңа және пайдаланылған батареяларды араластырмаңыз. Батареялардың әртүрлі брендтерін араластырмаңыз. Полюстерін дұрыс қаратыңыз. Ұзақ уақыт пайдаланылмаған өнімдерден батареяларды алып тастаңыз. Батареяларды құрғақ орында сақтаңыз.
- Жарақат алу қаупі: аққан батареяларды шығару кезінде қолғап киіңіз. Батареяларды балалар мен үй жануарларына қол жетімсіз жерде сақтаңыз.
- Жарылу қаупі: батареяларды қысқартпаңыз. Батареялардың қатты қызып кетуін болдырмаңыз. Батареяларды өртке тастамаңыз. Батареяларды зақымдамаңыз немесе бөлшектемеңіз. Қайта зарядталмайтын батареяларды зарядтамаңыз;

#### Айналаны қорғау мәселелер ақпараты

Барлық қажетсіз орамдар алынып тасталған. Біз орамды үш материалға оңай ажыратылатын етіп жасауға тырыстық: картон (қорап), көбік полистирол (буфер) және полиэтилен (дорбалар, қорғағыш көбік орауышы.)

Жүйе мамандандырылған компания тарапынан бөлшектенген жағдайда

қайта өңдеп, қайта пайдалануға болатын материалдардан тұрады. Орауыш материалдар, ресурсы біткен батареялар мен ескірген жабдықты тастауға қатысты жергілікті ережелерді ұстаныңыз.

#### Авторлық құқық ескертпесі



Be responsible  
Respect copyrights

Бұл өнім авторлық құқықтарды қорғау технологиясын қамтиды, бұл технология АҚШ-тағы Rovi Corporation корпорациясының патенттер және басқа да зияткерлік меншік құқықтарымен қорғалған. Қайта құрастыруға және бөлшектеуге тыйым салынған.

#### Trademark notice

**DIVX**  
**ULTRA**

DivX®, DivX Ultra®, DivX Certified® and associated logos are trademarks of Rovi Corporation or its subsidiaries and are used under license.

DivX Ultra® Certified to play DivX® video with advanced features and premium content.

ABOUT DIVX VIDEO: DivX® is a digital video format created by DivX, LLC, a subsidiary of Rovi Corporation. This is an official DivX Certified® device that plays DivX video. Visit [divx.com](http://divx.com) for more information and software tools to convert your files into DivX videos.

ABOUT DIVX VIDEO-ON-DEMAND: This DivX Certified® device must be registered in order to play purchased DivX Video-on-Demand (VOD) movies. To obtain your registration code, locate the DivX VOD section in your device setup menu. Go to [vod.divx.com](http://vod.divx.com) for more information on how to complete your registration.

**DOLBY**  
**DIGITAL**

Manufactured under license from Dolby Laboratories. Dolby and the double-D symbol are trademarks of Dolby Laboratories.



'DVD Video' DVD Format/Logo  
Licensing корпорациясының сауда  
белгісі болып табылады.

Бұл құрылғыда мына белгі бар:



#### Ескертпе

- The type plate is located on the back of the unit.

## 2 Your DVD Mini Hi-Fi System

Congratulations on your purchase, and welcome to Philips! To fully benefit from the support that Philips offers, register your product at [www.philips.com/welcome](http://www.philips.com/welcome).

### Introduction

With this unit, you can:

- Watch video from DVD/VCD/SVCD or USB storage devices
- Enjoy audio from discs, USB storage devices, or MP3 devices
- View pictures from discs or USB storage devices
- Listen to FM radio

You can enrich sound output with these sound effects:

- Dynamic Bass Boost (DBB)
- Digital Sound Control (DSC)
- Max sound for instant power boost

The unit supports these media/disc formats:



You can play DVD discs marked with the following region code:



Russia

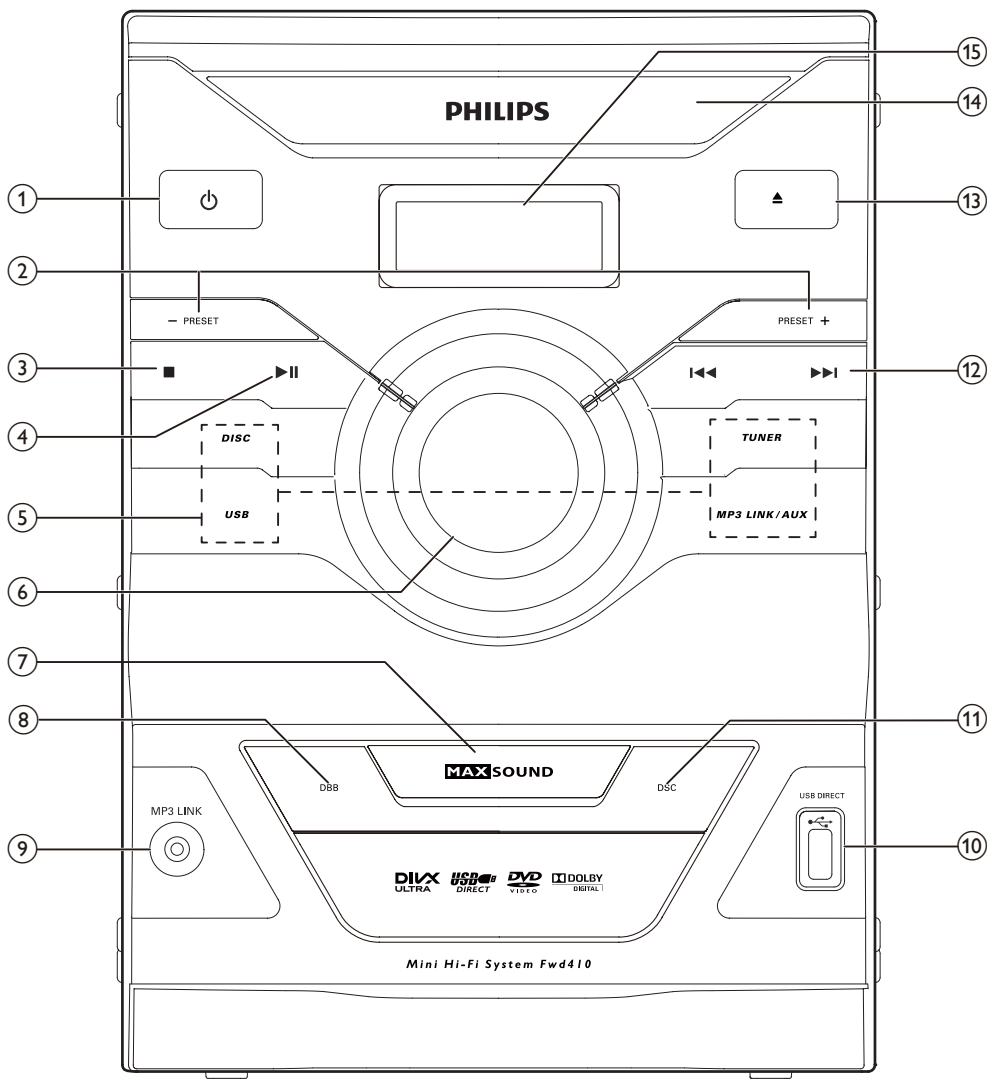
### What's in the box

Check and identify the contents of your package:

- Main unit
- 2 x speakers
- Remote control with batteries
- Composite video cable (yellow)
- Power cord
- FM antenna
- User manual
- Quick start guide



## Overview of the main unit



①

- Turn on the unit or switch to standby mode.

② PRESET +/-


- Select a preset radio station.

③

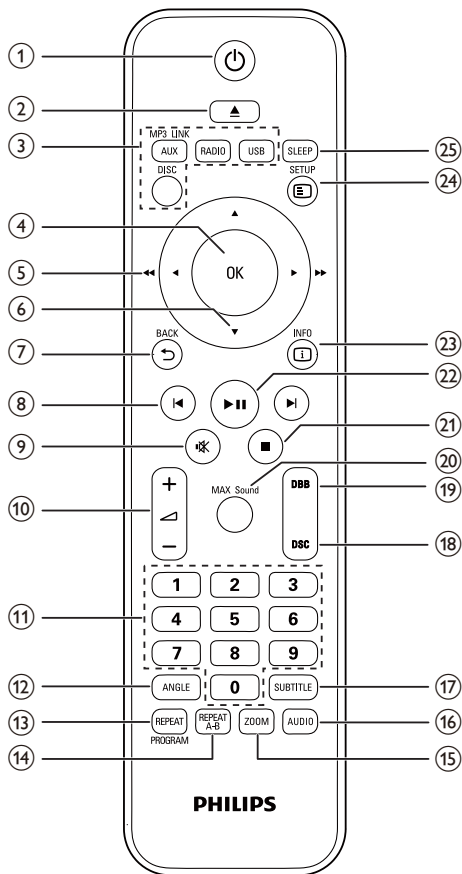
- Stop play or erase a program.

④

- Ойнатуды бастау немесе уақытша тоқтату.

- ⑤ **Source selection keys**
  - **DISC**: Switch to disc source.
  - **USB**: Switch to USB storage device.
  - **TUNER**: Switch to FM radio.
  - **MP3 LINK/AUX**: Switch to external MP3 or auxiliary device.
- ⑥ **Volume knob**
  - Adjust volume.
- ⑦ **MAX SOUND**
  - Turn on or off instant power boost for sound.
- ⑧ **DBB**
  - Turn on or off dynamic bass enhancement.
- ⑨ **MP3 LINK**
  - Audio input socket (3.5mm ) for an external audio device.
- ⑩ **USB DIRECT** 
  - Socket for a USB mass storage device.
- ⑪ **DSC**
  - Select a preset sound equalizer setting.
- ⑫ **⏮ / ⏭**
  - Skip to the previous/next track, title, or chapter.
  - Tune to a radio station.
- ⑬ **⏮**
  - Open or close the disc compartment.
- ⑭ **Disc compartment**
- ⑮ **Display panel**
  - Display current status.

## Overview of the remote control

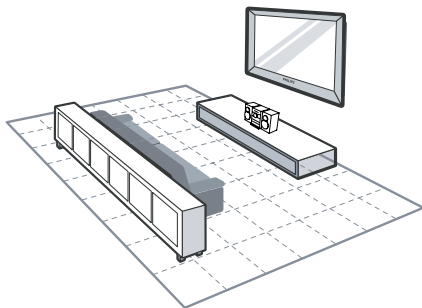


- ① **⏻**
  - Turn on the unit or switch to standby mode.
- ② **⏮**
  - Open or close the disc compartment.
- ③ **Source selection keys**
  - **DISC**: Switch to disc source.
  - **USB**: Switch to USB storage device.
  - **RADIO**: Switch to FM radio.
  - **MP3 LINK/AUX**: Switch to external MP3 or auxiliary device.

- ④ **OK**
- Confirm a selection.
- ⑤ **◀/▶ (◀◀/▶▶)**
- Search in a track or disc.
  - Navigate left/right in a menu.
  - Tune to a radio station.
- ⑥ **▲/▼**
- Navigate up/down in a menu.
  - Rotate a picture.
  - During video play, select a slow backward/forward mode.
- ⑦ **↶ BACK**
- Return to the previous menu.
- ⑧ **⏮/⏭**
- Skip to the previous/next track.
  - Skip to the previous/next title or chapter.
  - Select a preset radio station.
- ⑨ **🔊**
- Дыбысты өшіру немесе қалпына келтіру.
- ⑩ **🔊 +/-**
- Adjust volume.
- ⑪ **Numeric keypad**
- Select a title/chapter/track.
  - Select a preset radio station.
- ⑫ **ANGLE**
- Select video scenes recorded in different camera angels.
- ⑬ **REPEAT/PROGRAM**
- Select a repeat play mode.
  - Program radio stations.
- ⑭ **REPEAT A-B**
- Repeat a specific section within a track/chapter.
- ⑮ **ZOOM**
- Zoom in or out a picture/video image.
- ⑯ **AUDIO**
- For VCD/SVCD, select stereo, mono-left, mono-right, or mix-mono channel.
  - For DVD/DivX video, select an audio language.
- ⑰ **SUBTITLE**
- During video play, select a subtitle language.
- ⑱ **DSC**
- Select a preset sound setting.
- ⑲ **DBB**
- Select a level of dynamic bass boost.
- ⑳ **MAX Sound**
- Turn on or off instant power boost for sound.
- ㉑ **■**
- Stop play.
  - Erase a program.
- ㉒ **▶||**
- Start or pause play.
- ㉓ **ℹ INFO**
- For discs, access the play options or display the current disc status.
  - For slideshow, display a thumbnail view of photo files.
- ㉔ **⚙ SETUP**
- Access or exit the system setup menu.
- ㉕ **SLEEP**
- Switch the unit to standby after a specified duration.

# 3 Кочы

## Place the unit



- 1 Place the unit near the TV.
- 2 Place the left and right speakers at equal distance from the TV and at an angle of approximately 45 degrees from the listening position.

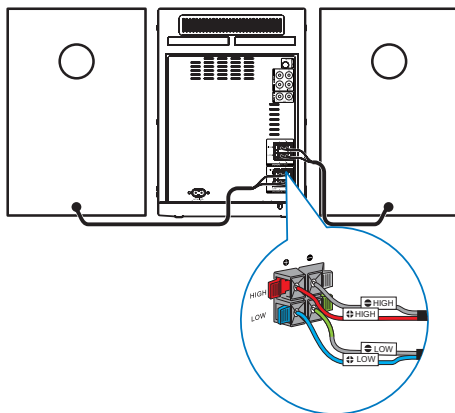
### Ескертпе

- To avoid magnetic interference or unwanted noise, never place both the main set and speakers too close to any radiation devices.
- Place this unit on top of a table.
- Never place this unit in an enclosed cabinet.
- Place this unit near the AC outlet where the AC power plug can be easily reached.

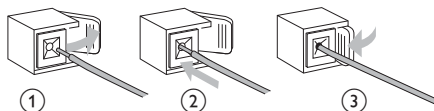
## Connect speakers

### Ескертпе

- For better sound effect, use the supplied speakers only.
- Connect only speakers with impedance that is the same or higher than the supplied speakers. Refer to the specifications section of this manual.



- 1 On the back of the main set, find the left and right speaker sockets.
- 2 Check that the colors and polarities of the speaker cables match those of the speaker sockets.
- 3 Insert the speaker wires into the corresponding speaker sockets.

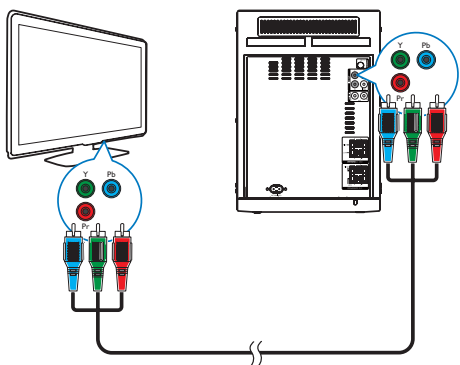


## Connect video cables

Select the best video connection that the TV can support.

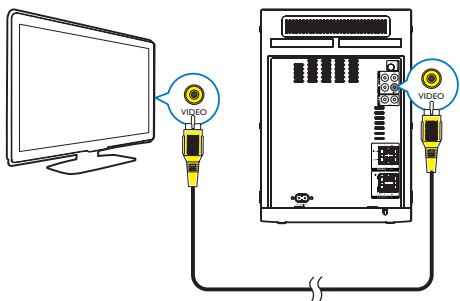
- **Option 1:** Connect to the component video sockets (for a standard TV or Progressive Scan TV).
- **Option 2:** Connect to the video (CVBS) socket (for a standard TV).

## Option 1: Connect to the component video sockets



- Connect component video cables (not supplied) to:
  - the **Y Pb Pr** sockets on this unit.
  - the component video input sockets on the TV.

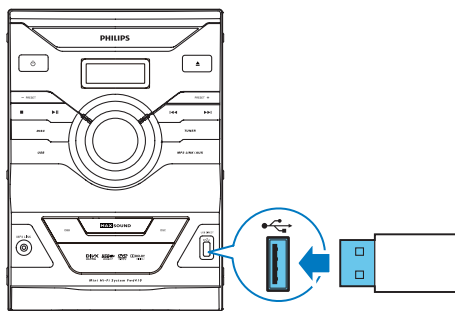
## Option 2: Connect to the video (CVBS) socket



- Connect the composite video cable (supplied) to:
  - the **VIDEO** socket on this unit.
  - the video input socket on the TV.

## Optional connections

### Connect USB flash drive



- 1 Connect a USB storage device to the **USB DIRECT** socket on the front panel.

### Ескертпе

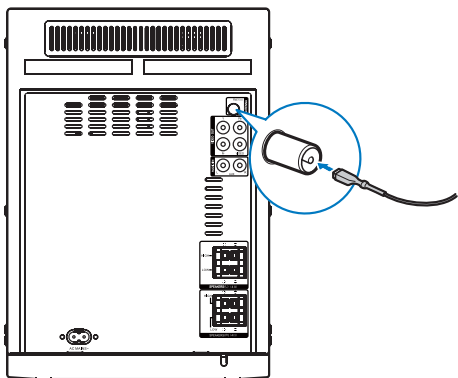
- This unit only supports play of MP3, DivX (Ultra) or JPEG files that are stored on a USB storage device.
- Press **USB** to access the content and play the files.

### Connect FM antenna

### Кеңес

- For optimal reception, fully extend and adjust the position of the antenna.
- For better FM stereo reception, connect an outdoor FM antenna to the **FM ANTENNA (75Ω)** socket.
- The unit does not support MW radio reception.

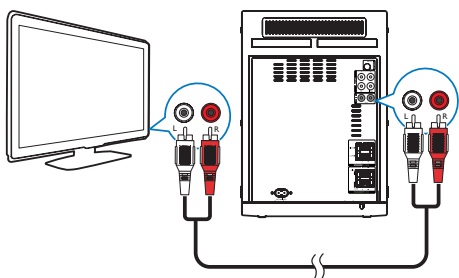
- Connect the supplied FM wire antenna to the **FM ANTENNA (75Ω)** socket on the back of the unit.



## Route audio from other devices

### Route audio from TV or other devices

You can use this unit to play audio from a TV or other device such as a cable box.



- Connect audio cables (white/red) to:
  - the **AUDIO IN (AUX L/R)** sockets on the back panel.
  - the audio output sockets on the external device.

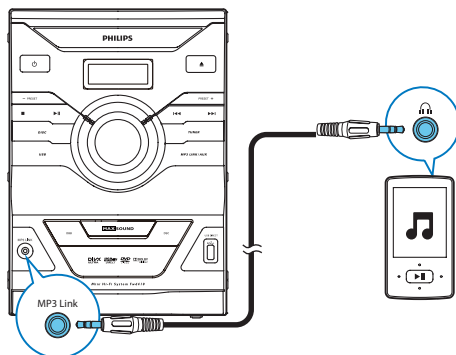


#### Кеңес

- Press **MP3 LINK/AUX** to select the audio output of your connection.

### Listen to an audio player

You can listen to an audio player through this unit.



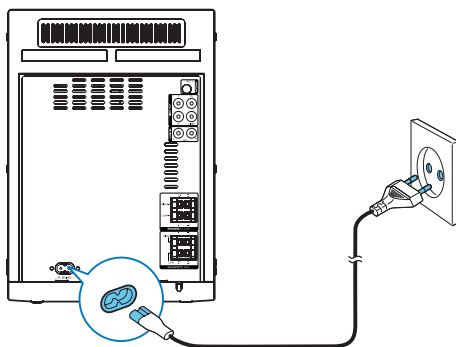
- Connect an MP3 Link cable to:
  - the **MP3 LINK** socket on the front panel.
  - the headphone socket on the audio player.



#### Кеңес

- Press **MP3 LINK/AUX** to select the audio output of your connection.

## Connect power



#### Ескерту

- Risk of product damage! Make sure that the power supply voltage corresponds to the voltage printed on the back or the underside of the unit.
- Before connecting the AC power cord, make sure that you have completed all other connections.

- Connect the AC power cord to
  - the **AC MAINS~** socket on this unit.
  - the wall power socket.

# 4 Жұмысты бастау



## Ескерту

- Осы жердегіден басқа басқару элементтерін, реттеулерді пайдалану немесе техникалық қызмет көрсету процедураларын орындау зиянды радиацияның шығуын немесе қауіпсіз жұмысты тудыруы мүмкін.

Әрдайым осы тараудағы нұсқауларды реті бойынша орындаңыз.

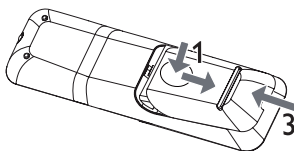
If you contact Philips, you will be asked for the model and serial number of this apparatus. The model number and serial number are on the back of the apparatus. Write the numbers here:

Model No. \_\_\_\_\_

Serial No. \_\_\_\_\_

## Prepare the remote control


- 1 Press and push the battery compartment to slide it open (see "1" in the illustration).
- 2 Insert two AAA batteries with correct polarity (+/-) as indicated.
- 3 Push and slide back the battery compartment (see "3" in the illustration).




## Ескертпе

- The batteries shall not be exposed to excessive heat such as sunshine, fire or the like.
- If you are not going to use the remote control for a long time, remove the batteries.
- Do not mix batteries (old and new or carbon and alkaline, etc.).
- Batteries contain chemical substances, so they should be disposed of properly.


## Turn on

- 1 Press .  
↳ The unit switches to the last selected source.

## Switch to standby mode

- 1 Press  again to switch the unit to standby mode.  
↳ The backlight on the display panel turns off.  
↳ The power indicator beside the display panel turns on (red).

## Find the correct viewing channel

- 1 Press  to turn on the unit.
- 2 Press **DISC** to switch to disc mode.
- 3 Turn on the TV and switch to the correct video-in channel in one of the following ways:
  - Go to the lowest channel on your TV, then press the Channel Down button until you see the blue screen.
  - Press the source button repeatedly on the remote control of your TV.



## Кеңес

- The video-in channel is between the lowest and highest channels and may be called FRONT, A/V IN, VIDEO etc. See the TV user manual on how to select the correct input on the TV.

## Select the correct TV system

Change this setting if the video does not appear correctly. By default, this setting matches the most common setting for TVs in your country.

- 1 Press  **SETUP**.

- 2 Select **□** ([Video Setup]).
- 3 Select **[TV System]** and then press **▶** (**▶▶**).
- 4 Select a setting and then press **OK**.
  - **[PAL]** - For TV with PAL color system.
  - **[NTSC]** - For TV with NTSC color system.
  - **[Multi]** - For TV that is compatible with both PAL and NTSC.
- 5 To exit the menu, press **⏏** **SETUP**.

## Change system menu language

- 1 Press **⏏** **SETUP**.
- 2 Select **✱** ([General Setup]).
- 3 Select **[OSD Language]** and then press **▶** (**▶▶**).
- 4 Select a setting and then press **OK**.
- 5 To exit the menu, press **⏏** **SETUP**.

## Turn on progressive scan

### Ескертпе

- To use the progressive scan feature, you need to connect a progressive scan TV with the component video sockets (ақылдасы 'Option 1: Connect to the component video sockets' бет 9).

- 1 Turn on the TV to the correct viewing channel for this unit.
- 2 Press **⏏** **SETUP**.
- 3 Select **□** ([Video Setup]).
- 4 Select **[Progressive]** -> **[On]**, and then press **OK**.
  - ↳ The progressive setup is complete.

### Ескертпе

- If a blank/distorted screen is displayed, wait for 15 seconds for the auto recovery.
- If no picture is displayed, turn off the progressive scan mode as follows:
  - 1) Press **▲** to open the disc compartment.
  - 2) Press **◀**.
  - 3) Press **AUDIO**.

- 5 Press **⏏** **SETUP** to exit the menu.
  - ↳ You can now turn on the progressive scan mode on the TV (see the TV user manual).

### Ескертпе

- During play, when the progressive scan mode is on for both this unit and the TV, distorted picture may display. In this case, turn off the progressive scan feature on both this unit and the TV.



# 5 Play

## ! Ескерту

- Risk of damage to the unit! During play, never move the unit.

## Play a disc

### ! Ескерту

- Never look at the laser beam inside the unit.
- Risk of product damage! Never play discs with accessories such as disc stabilizer rings or disc treatment sheets.
- Never put any objects other than discs into the disc compartment.

- 1 Press **DISC** to select the disc source.
- 2 Press **▲**.  
↳ The disc tray opens.
- 3 Place a disc onto the tray and press **▲** again to close the disc tray.  
↳ Make sure that that the label side faces up.
- 4 If play does not start automatically, select a title/chapter/track, then press **▶||** to start play.
  - To stop play, press **■**.
  - To pause or resume play, press **▶||**.
  - To skip to the previous/next title/ chapter/track, press **◀|** / **|▶**.

### \* Кеңес

- To play a locked DVD, enter the 4-digit parental control password.

## Select an audio language

You can select an audio language for a DVD or DivX (Ultra) video.

- 1 During disc play, press **AUDIO**.  
↳ The language options appear. If the selected audio channels is unavailable, the default disc audio channel is used.

### ☰ Ескертпе

- For some DVDs, the language can only be changed from the disc menu. Press **↩ BACK** to access the menu.

## Select a subtitle language

You can select a subtitle language for a DVD or DivX (Ultra) video.

- 1 During play, press **SUBTITLE** repeatedly.

### ☰ Ескертпе

- For some DVDs, the language can only be changed from the disc menu. Press **↩ BACK** to access the menu.

## Play from USB or recored discs

You can play DivX (Ultra)/MP3/JPEG picture files copied onto a CD-R/RW, recordable DVD or USB storage device.

- 1 Select a source.
  - For a USB storage device, press **USB**.
  - For a disc, press **DISC**.
- 2 Insert the USB storage device (ақылдасу 'Connect USB flash drive' бет 9) or load the disc.
- 3 Press **▲** / **▼** to select a folder, then press **OK** to confirm.
- 4 Press **▲** / **▼** to select a file, then press **OK** to start play.
  - To stop play, press **■**.
  - To pause/resume play, press **▶||**.

- To return to the upper-level directory, press **↩ BACK**.
- To skip to the previous/next file, press **◀ / ▶**.
- To change the subtitle language during play of a DivX (Ultra) video, press **SUBTITLE**.



#### Ескертпе

- You can only play DivX (Ultra) videos rented or purchased through the DivX registration code of this unit.
- Subtitle files with the following filename extensions (.srt, .smi, .sub, .ssa, .ass) are supported but do not appear on the file navigation menu.
- The subtitle filename has to be the same as the file name of the video.

## Play a slideshow with background music

This apparatus can play MP3 files and JPEG photos simultaneously.



#### Ескертпе

- The MP3 and JPEG files must be stored on the same disc or USB storage device.

- 1 Play an MP3 file.
  - 2 Select a photo from your photo folder; then press **OK** to start the slideshow.
    - ↳ Slideshow begins and continues until the end of the photo folder.
    - ↳ Audio continues until the end of the last file.
- To return to the menu, press **↩ BACK**.
  - To stop the slideshow, press **■**.

## Play control

### Select repeat play options

- 1 During play, press **REPEAT/PROGRAM** repeatedly to select a repeat play option.
  - To resume normal play, press **REPEAT/PROGRAM** repeatedly until **[Repeat Off]** is displayed.

### Search forward/backward

- 1 During video/audio play, press **◀ / ▶ (◀◀ / ▶▶)** repeatedly to select a search speed.
  - To resume play at normal speed, press **▶ II**.

### Set repeat play for a specific section

- 1 During play, press **REPEAT A-B** at where you want to set the starting point.
- 2 Press **REPEAT A-B** again to set the ending point.
  - ↳ Repeat play starts.
- 3 To cancel repeat play, press **REPEAT A-B** again.



#### Ескертпе

- The marked section for repeat play is only possible within a track/title.

## Resume video play from last stopped point



#### Ескертпе

- This feature is only available for DVD/VCD play.

- 1 In stop mode and when the disc has not been removed, press **▶ II**.

To cancel resume mode and stop play completely:

- 1 In stop mode, press **■**.

## Play options

### Display play information

- 1 During play, press **INFO** to display play information on the TV.

### Zoom in/out image

- 1 During video play, press **ZOOM** to zoom in/out the image at different scales.
  - When the image is zoomed in, you can press use the navigation buttons to pan across the image.

### Slow forward/backward play

- 1 During video play, press **▲** / **▼** to select a slow backward/forward speed.
  - To resume play at normal speed, press **▶II**.

### Change the audio channel



#### Ескертпе

- This feature is only available for VCD/SVCD.
- During play, press **AUDIO** repeatedly to select an audio channel available on the disc:
  - Stereo
  - Mono Left
  - Mono Right
  - Mix Mono

### Select a camera angle



#### Ескертпе

- Some DVD discs contain alternate scenes, such as scenes recorded from different camera angles. For such discs, you can select from the available alternate scenes.
- During DVD play, press **ANGLE** repeatedly to select a camera angle.

## Picture view options

### Select a slide show play mode

- During photo play, press **INFO** to display a thumbnail view of available photo files.
- To return to normal play, press **OK**.
- To exit thumbnail view, press **↩ BACK**.

### Rotate picture

- 1 During play, press **▲** / **▼** to rotate the picture clockwise/anti-clockwise.

## 6 Радио тыңдау

The unit can automatically search and store radio stations. You can also search and store radio stations manually.

### Store radio stations automatically

If no radio stations are stored, the unit can store radio stations automatically.

- 1 Turn on the unit.
  - 2 Press **RADIO**.  
↳ **[AUTO INSTALL PRESS PLAY]** (press ►► to start automatic installation) is displayed.
  - 3 Press ►►.  
↳ The unit automatically stores radio stations with sufficient signal strength.  
↳ After all available radio stations are stored, the first stored radio station is broadcast automatically.
- To stop automatic installation, press ■.

### Tune to a radio station

- 1 Press **RADIO**.
- 2 Press ◀/▶ (◀◀/▶▶).  
↳ The radio tunes to a station with strong reception automatically.
- 3 Repeat step 2 to tune to more stations.
  - To tune to a weak station, press ▲/▼ repeatedly until you find optimal reception.



#### Ескертпе

- **[STEREO]** is the default setting for tuner mode.
- In tuner mode, you can press **RADIO** repeatedly to switch between **[STEREO]** and **[MONO]**. The unit memorizes your setting even if you turn off the unit or turn to other sources.

## Program radio stations



#### Ескертпе

- You can program a maximum of 40 preset radio stations.

### Program radio stations automatically

- Press and hold **REPEAT/PROGRAM** for more than 2 seconds to activate automatic programming.
  - ↳ All available stations are programmed in the order of waveband reception strength.
  - ↳ The first programmed radio station is broadcast automatically.

### Program radio stations manually

- 1 Tune to a radio station (ақылдасу 'Tune to a radio station' бет 16).
- 2 Press **REPEAT/PROGRAM** to activate programming.
- 3 Press ◀/▶ to allocate a number from 1 to 40 to this radio station, then press **REPEAT/PROGRAM** to confirm.
  - ↳ The preset number and the frequency of the preset station are displayed.
- 4 Repeat the previous steps to program other stations.



#### Ескертпе

- You can also use the numeric keypad directly to allocate a preset number. To allocate a 2-digit number, press the number corresponding to the first digit, and then press the number corresponding to the second digit within 2 seconds.



#### Ескертпе

- To overwrite a programmed station, store another station in its place.

---

## Tune to a preset radio station

- Press **◀/▶** to select a preset number that you want.



### Кеңес

- You can also use the numeric keypad directly to select a preset number. To select a 2-digit number, press the number corresponding to the first digit, and then press the number corresponding to the second digit within 2 seconds.

---

## Change tuning grid

In some countries, you can switch the FM tuning grid between 50 kHz and 100 kHz. Changing the tuning grid erases all preset radio stations.

- 1 Press **RADIO**.
- 2 Press **■**.
- 3 Press and hold **▶||** to toggle between 100 kHz and 50 kHz frequency.

---

## 7 Adjust sound

---

### Adjust volume level

- During play, press **◀ +/-** to increase/decrease the volume level.

---

### Select a sound effect



### Ескертпе

- You cannot use different sound effects at the same time.

---

### Boost sound power

This feature allows you to give an instant boost to the sound power.

- Press **MAX Sound** to turn on or off instant power boost.

---

### Select a preset sound effect

The DSC (Digital Sound Control) feature allows you to enjoy special sound effects.

- During play, press **DSC** repeatedly to select:
  - **[POP]** (pop)
  - **[TECHNO]** (techno)
  - **[OPTIMAL]** (optimal)
  - **[JAZZ]** (jazz)

---

### Enhance bass

The best DBB (Dynamic Bass Enhancement) setting is generated automatically for each DSC selection. You can manually select the DBB setting that best suits your listening environment.

- During play, press **DBB** repeatedly to select:
  - DBB 1
  - DBB 2
  - DBB 3
  - DBB off

---

### Mute sound

- During play, press **⏏** to mute/resume sound.

# 8 Adjust settings

- 1 Press **SETUP**.  
→ The following menu is displayed.

Symbol	Description
	[General Setup]
	[Audio Setup]
	[Video Setup]
	[Preference Setup]

- 2 Select a setup page.
- 3 Select an option and then press **▶** (**▶▶**).
- 4 Select a setting and then press **OK**.
  - To return to the previous menu, press **◀** (**◀◀**) or **↩ BACK**.
  - To exit the menu, press **SETUP** again.

## General setup

On the **[General Setup]** page, you can set the following options:

### [OSD Language]

Select the preferred language for on-screen display.

### [Screen Saver]

The screen saver protects the TV screen damage due to prolonged exposure to a static image.

- **[On]** – Enable the screen saver.
- **[Off]** – Disable the screen saver.

### [Auto Standby]

Turn off or on automatic standby switching mode. It is an energy saving feature.

- **[On]** – Switch to standby after 15 minutes of inactivity (for example, in pause or stop mode).
- **[Off]** – Disable auto standby mode.

## [DivX(R) VOD Code]

Display the DivX® registration code.



Кеңес

- Enter this DivX registration code when you rent or purchase video from [www.divx.com/vod](http://www.divx.com/vod). The DivX videos rented or purchased through the DivX® VOD (Video On Demand) service can be played only on the device to which it is registered.

## Audio setup

On the **[Audio Setup]** page, you can set the following options:

### [Night Mode]

Make loud sound level softer and soft sound level louder so that you can watch the DVD movies at a low volume, without disturbing others.

- **[On]** – enjoy quiet viewing at night (DVDs only).
- **[Off]** – enjoy surround sound with its full dynamic range.

## Video setup

On the **[Video Setup]** page, you can set the following options:

### [TV System]

Change this setting if the video does not appear correctly. By default, this setting matches the most common setting for TVs in your country.

- **[PAL]** – For TV with PAL color system.
- **[NTSC]** – For TV with NTSC color system.
- **[Multi]** – For TV that is compatible with both PAL and NTSC.

### [TV Display]

The TV format determines the aspect ratio of display according to the type of TV you have connected.



4:3 Pan Scan (PS)

4:3 Letter Box (LB)

16:9 (Wide Screen)

- **[4:3 Pan Scan]** – For 4:3 screen TV: full-height display with the trimmed sides.
- **[4:3 Letter Box]** – For 4:3 screen TV: wide-screen display with black bars on the top and bottom of the screen.
- **[16:9 Wide Screen]** – For wide-screen TV: display ratio 16:9.

### [Picture Settings]

Select a predefined set of picture color settings.

- **[Standard]** – Original color setting.
- **[Bright]** – Vibrant color setting.
- **[Soft]** – Warm color setting.
- **[Personal]** – Customizes the color setting. Set the level of brightness, contrast, sharpness/tint and color saturation, then press **OK**.

### [Progressive]

If a progressive scan TV is connected to this product, turn on the progressive scan mode.

- **[On]** – Turn on progressive scan.
- **[Off]** – Turn off progressive scan mode.

## Preference setup

On the **[Preference Setup]** page, you can set the following options:

### [Audio]

Select the preferred audio language for disc play.

### [Subtitle]

Select the preferred subtitle language for disc play.

### [Disc Menu]

Select the preferred disc menu language.

### Ескертпе

- If the language you have set is not available on the disc, the disc uses its own default language.
- For some discs, the subtitle/audio language can only be changed from the disc menu.

### [Parental]

Restricts access to discs that are unsuitable for children. These types of discs must be recorded with ratings.

- 1) Press **OK**.
- 2) Select a rating level, then press **OK**.
- 3) Press the numeric keys to enter the password.

### Ескертпе

- Rated discs above the level you set in **[Parental]** require a password to be played.
- The ratings are country-dependent. To allow all discs to play, select **'8'**.
- Some discs have ratings printed on them but are not recorded with ratings. This function has no effect on such discs.

### [PBC]

Turns on or off the content menu of VCDs/ SVCDs with PBC (playback control) feature.

- **[On]** – display index menu when you load a disc for play.
- **[Off]** – skip the menu and start play from the first title.

### [Password]

Set or change the password for locked discs and play restricted DVDs.

- 1) Press the numeric keys to enter '0000' or your last set password at **[Old Password]** field.
- 2) Enter the new password at **[New Password]** field.
- 3) Enter the new password again at **[Confirm Password]** field.
- 4) Press **OK** to exit the menu.

## Ескертпе

- If you forget the password, enter '0000' before you set a new password.

### [DivX Subtitle]

Select a character set that supports the DivX subtitle.

## Ескертпе

- Ensure that the subtitle file has the exact same file name as the movie file. If for example the file name of the movie is 'Movie.avi', then you will need to name the text file 'Movie.sub' or 'Movie.srt'.

### [Version Info]

Display the software version of this apparatus.

### [Default]

Reset all the settings to factory default, except for the password and parental settings.

## 9 Басқа мүмкіндіктер

---

### Set the sleep timer

This unit can switch to standby mode automatically after a set period.

- When the unit is turned on, press **SLEEP** repeatedly to select a preset period (in minutes).

#### To deactivate the sleep timer

- Press **SLEEP** repeatedly until **[OFF]** is displayed.

---

### Listen to an audio device

You can listen to an audio device through this unit.

- 1 Make sure that the external audio device is connected to this unit (ақылдасу 'Route audio from other devices' бет 10).
- 2 Press **MP3 LINK/AUX** repeatedly to select the audio input through the **MP3-LINK** socket or **AUDIO IN (AUX L/R)** sockets.
- 3 Start to play the device (see the device user manual).



# 10 Өнім туралы ақпарат

## Ескертпе

- Өнім туралы ақпарат алдын ала ескертусіз өзгертіледі.

## Ерекшеліктер

### Amplifier

Rated Output Power	4 X 40 W RMS + 1/0.5 dB
Frequency Response	30 Hz - 16000 Hz
Signal to Noise Ratio	≥ 65 dBA
Aux Input	900mV RMS 22k ohm

### Disc

Laser Type	Semiconductor
Disc Diameter	12 cm/8 cm
Video Decoding	MPEG-1 / MPEG-2 / DivX
Video DAC	12 Bits
Signal System	PAL / NTSC
Video Format	4:3 / 16:9
Video Luminance S/N	> 55 dB
Audio DAC	24 Bits / 96 kHz
Total Harmonic Distortion	≤ 1% (1 kHz)

### Tuner (FM)

Tuning Range	87.5 - 108 MHz
Tuning grid	100 KHz
Sensitivity - Mono, 26dB S/N Ratio	< 22 dBf
Total Harmonic Distortion	< 3%
Signal to Noise Ratio	> 50dB

### Speakers

Speaker	4 ohm
Impedance	
Speaker Driver	13cm woofer + 4.0cm Dome tweeter
Sensitivity	> 86 dB/m/W±4dB/m/W

### General information

AC power	110-240 V ~ 50-60 Hz
Operation Power Consumption	40 W
Standby Power Consumption	< 0.9 W
Composite Video Output	1.0Vp-p, 75 ohm
Component Video Output	
USB Direct	Version 1.1
Dimensions	
- Main Unit (W x H x D)	223 X 258 X 310 mm
- Speaker (W x H x D)	210 X 242 X 310 mm
Weight	
- With Packing	9.7 kg
- Main Unit	2.5 kg
- Speaker Box	2 x 2.8 kg

## Supported disc formats

- Digital Video Discs (DVDs)
- Video CDs (VCDs)
- SuperVideo CDs (SVCDs)
- Digital Video Discs + Rewritable (DVD+RW)
- Compact Discs (CDs)
- Picture (Kodak, JPEG) files on CDR(W)
- DivX(R) disc on CD-R(W):
- DivX 3.11, 4.x and 5.x

### Supported MP3-CD formats:

- ISO 9660
- Max. title/album name: 12 characters
- Max. title number plus album: 255.
- Max. nested directory: 8 levels.
- Max. album number: 32.
- Max. MP3 track number: 999.
- Supported sampling frequencies for MP3 disc: 32 kHz, 44.1 kHz, 48 kHz.
- Supported Bit-rates of MP3 disc are: 32, 64, 96, 128, 192, 256 (kbps).
- The following formats are not supported:
  - Files like \*.VMA, \*.AAC, \*.DLF, \*.M3U,
  - \*.PLS, \*.WAV
  - Non-English Album/Title name
  - Discs recorded in Joliet format
  - MP3 Pro and MP3 with ID3 tag

### Unsupported formats:

- Empty albums: an empty album is an album that does not contain MP3 files, and is not be shown in the display.
- Unsupported file formats are skipped. For example, Word documents (.doc) or MP3 files with extension .dlf are ignored and not played.
- AAC, WAV, PCM audio files
- WMA files

---

## USB playability information

### Compatible USB storage devices:

- USB flash memory (USB 2.0 or USB1.1)
- USB flash players (USB 2.0 or USB1.1)
- memory cards (requires an additional card reader to work with this apparatus)

### Supported formats:

- USB or memory file format FAT12, FAT16, FAT32 (sector size: 512 bytes)
- MP3 bit rate (data rate): 32-320 Kbps and variable bit rate
- Directory nesting up to a maximum of 8 levels
- Number of albums/ folders: maximum 99
- Number of tracks/titles: maximum 999
- ID3 tag v2.0 or later
- File name in Unicode UTF8 (maximum length: 128 bytes)

# 11 Troubleshooting



## Ескерту

- Never remove the casing of this apparatus.

To keep the warranty valid, never try to repair the system yourself.

If you encounter problems when using this apparatus, check the following points before requesting service. If the problem remains unsolved, go to the Philips web site ([www.Philips.com/support](http://www.Philips.com/support)). When you contact Philips, ensure that your apparatus is nearby and the model number and serial number are available.

### No power

- Make sure that the power cord of the unit is connected properly.
- Make sure that there is power at the AC outlet.
- If **[Auto Standby]** has been turned on, the system switches off automatically after 15 minutes of inactivity (for example, in pause or stop mode).

### No disc detected

- Insert a disc.
- Check if the disc is inserted upside down.
- Wait until the moisture condensation at the lens has cleared.
- Replace or clean the disc.
- Use a finalized CD or correct format disc.

### No picture

- Check the video connection.
- Turn on the TV to the correct Video-In channel.

### Black and white or distorted picture

- The disc does not match the TV color system standard (PAL/NTSC).
- Sometimes a slight picture distortion may appear. This is not a malfunction.
- Clean the disc.

- A distorted picture may appear during progressive scan setup (ақылдасу 'Turn on progressive scan' бет 12).

**The aspect ratio of the TV screen cannot be changed even though you have set the TV display format.**

- The aspect ratio is fixed on the loaded DVD disc.
- The aspect ratio may not be changed for some TV systems.

### No sound or poor sound

- Adjust the volume.
- Check whether the unit is muted.
- Check that the speakers are connected correctly.
- Check if the stripped speaker wires are clamped.

### Remote control does not work

- Before you press any function button, first select the correct source with the remote control instead of the main unit.
- Reduce the distance between the remote control and the unit.
- Insert the battery with its polarities (+/- signs) aligned as indicated.
- Replace the battery.
- Aim the remote control directly at the sensor on the front of the unit.

### Disc does not play

- Insert a readable disc with the label side facing up.
- Check the disc type, color system and regional code. Check for any scratches or smudges on the disc.
- Press **[F4] SETUP** to exit the system setup menu.
- Disable the password for parental control or change the rating level.
- Moisture has condensed inside the unit. Remove the disc and leave the unit turned on for about an hour. Disconnect and reconnect the AC power plug, and then turn on the unit again.

**DivX video files cannot be played.**

- Make sure that the DivX video file is complete.
- Make sure that the file extension is correct.
- Due to Digital Rights issues, the DRM-protected video files cannot be played through an analog video connection (for example, composite and component connection). Transfer the video content onto the disc media and play these files.

**Poor radio reception**

- Increase the distance between the apparatus and your TV or VCR.
- Fully extend the FM antenna.
- Connect an outdoor FM antenna instead.

**Audio or subtitle languages cannot be set**

- The disc is not recorded with sound or subtitles in multiple languages.
- The audio or subtitle language setting is prohibited on the disc.

**Cannot display some files in USB device**

- The number of folders or files in the USB device has exceeded a certain limit. This phenomenon is not a malfunction.
- The formats of these files are not supported.

**USB device not supported**

- The USB device is incompatible with the unit. Try another one.





2013 © WOOX Innovations Limited. All rights reserved.

This product was brought to the market by WOOX Innovations Limited or one of its affiliates, further referred to in this document as WOOX Innovations, and is the manufacturer of the product.

WOOX Innovations is the warrantor in relation to the product with which this booklet was packaged. Philips and the Philips Shield Emblem are registered trademarks of Koninklijke Philips N.V.

FWD410\_51\_UM\_V3.0

