

EN Quick start guide

ZH-CN 快速入门指南

PHILIPS



End of life disposal

- Your new product contains materials that can be recycled and reused. Specialized companies can recycle your product to increase the amount of reusable materials and to minimize the amount to be disposed of.
 - Please find out about the local regulations on how to dispose your old monitor from your local Philips dealer.
 - (For customers in Canada and U.S.A.) Dispose the old product in accordance to local-state and federal regulations.
- For additional information on recycling contact www.eia.org (Consumer Education Initiative).

Recycling Information for Customers

Philips establishes technically and economically viable objectives to optimize the environmental performance of the organization's product, service and activities. From the planning, design and production stages, Philips emphasizes the importance of making products that can easily be recycled. At Philips, end-of-life management primarily entails participation in national take-back initiatives and recycling programs whenever possible, preferably in cooperation with competitors.

There is currently a system of recycling up and running in the European countries, such as The Netherlands, Belgium, Norway, Sweden and Denmark.

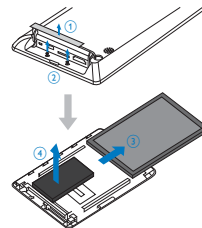
In U.S.A., Philips Consumer Lifestyle North America has contributed funds for the Electronic Industries Alliance (EIA) Electronics Recycling Project and state recycling initiatives for end-of-life electronics products from household sources. In addition, the Northeast Recycling Council (NERC) - a multi-state non-profit organization focused on promoting recycling market development - plans to implement a recycling program.

In Asia Pacific, Taiwan, the products can be taken back by Environment Protection Administration (EPA) to follow the IT product recycling management process, detail can be found in web site www.epa.gov.tw.

! Caution

- RISK OF EXPLOSION IF BATTERY IS REPLACED BY AN INCORRECT TYPE.
- DISPOSE OF USED BATTERIES ACCORDING TO THE INSTRUCTIONS.
- Never remove the built-in battery except for disposal of the product.

Always bring your product to a professional to remove the built-in battery.



North Europe Information (Nordic Countries)

VAROITUS:
SIJÖTÄ LAITE SITEN, ETTÄ VERKKÖJOHTO VOIDAAN TARVITTAESSA HELPOTSI IRROTTA PISTORASIASTA.
Placering/Ventilasjon

ADVARSEL:
SØRG FØR PLACERENGEN FOR AT NETLEDNINGENS STIK OG STIKKONTAKT ER NEMT TILGÆNGELIGE.
Pakkal/mankerto

ADVARSEL:
NÅR DETTE UTSTYRET PLASSERES, MÅ DU PASSE PÅ AT KONTAKTENE FOR STØMTILFØRSEL ER LETTE Å NÅ.

Banned Substance Declaration

This product complies with RoHS.

Class II statement

Class II equipment symbol:



This symbol indicates that this product has a double insulation system.

Know these buttons

	- Press to turn on the PhotoAlbum - Press and hold to turn off the PhotoAlbum - Press to switch modes (between slideshow and clock/calendar; or between wave view and album view)
	- Hold to go to the home screen - Tap to go back to the upper-level menu
MENU	- Tap to access or to exit the option menu
	- Tap to zoom in/out - Tap to switch modes (wave mode <-> album mode <-> slideshow mode <-> zoom in twice <-> zoom in 4 times)
	- Tap to scroll up - Tap to scroll down
OK	- Tap to play/pause slideshow - Tap to confirm a selection
	- Tap to skip left - Tap to skip right

Know these keypad icons

	Input in English
	Input in supported European languages
	Input in Simplified Chinese
Русский	Input in Russian
\$/# / ABC	Switch to select symbols, punctuations, alphabet or numbers
▲/▼	Switch between upper and lower case
	Enter a blank space
	Enter a line break

English

1 Important

Safety

Safety precautions and maintenance

- Never touch, push, rub or strike the screen with hard objects as this may damage the screen permanently.
 - When the product is not used for long periods, unplug it.
 - Before you clean the screen, turn off and unplug the power cord. Only clean the screen with a soft, water-damp cloth. Never use substances such as alcohol, chemicals or household cleaners to clean the product.
 - Never place the product near naked flames or other heat sources, including direct sunlight.
 - Never expose the product to rain or water. Never place liquid containers, such as vases, near the product.
 - Never drop the product. When you drop the product, it will be damaged.
 - Ensure that you install and use services or software only from trustworthy sources free of virus or harmful software.
 - This product is designed for indoor use only.
 - Only use the supplied power adaptor for the product.
- Before you store the PhotoAlbum in to the carrying pouch, turn off the PhotoAlbum.

Notice



This product is in compliance with the essential requirements and other relevant provisions of Directives 2006/95/EC (Low Voltage), 2004/108/EC (EMC).

Respect copyrights



The making of unauthorized copies of copy-protected material, including computer programs, files, broadcasts and sound recordings, may be an infringement of copyrights and constitute a criminal offence. This equipment should not be used for such purposes.

Transfer/Play media via a storage device

! Caution

- Do not disconnect the storage device from the PhotoAlbum during media transfer.

Media type supported:

- Photo (JPEG)

Storage device supported:

- SD/SDHC/MMC/MMC Plus/xD/M/MS/MS Pro

- Insert a storage device into the PhotoAlbum.
 - An option menu is displayed.
- Select an option, and then tap **OK**.
- Follow the on screen instructions to:
 - Play media on the storage device.
 - Browse media on the storage device.
 - Copy media on the storage device to PhotoAlbum.

View a created event reminder



- In the home screen, select **[Event Reminder]** and then tap **OK**.
- Select **[View Event Reminder]**, and then tap **OK**.
- Select an event reminder, and then tap **OK**.
 - An event reminder is displayed.
 - Tap **MENU** and then select one of the following options to continue.
 - [Re-schedule]**: Reschedule the event reminder.
 - [Delete]**: Delete the event reminder.
 - To go back to view other reminders, select **[Done]** and then tap **OK**.



Startup



认识这些按钮

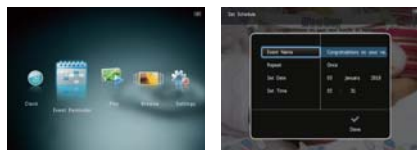
- - 按下打开数码相机
- 按下关闭数码相机
- 按下进入切换模式 (在幻灯片放映和时/日/月; 或波形视图或相册视图之间切换)
- ⏪ - 按下进入主屏幕
- 轻击返回上一级菜单
- MENU - 轻击进入或退出选项菜单
- 🔍 - 轻击放大/缩小
- 轻击进入切换模式 (波形模式 <-> 相册模式 <-> 幻灯片模式 <-> 放大/缩小 <-> 放大 4 倍)
- ▲▼ - 轻击向上滚动
- 轻击向下滚动
- OK - 轻击播放/暂停幻灯片
- 轻击确认选择
- ◀▶ - 轻击向左滚动
- 轻击向右滚动

认识这些键盘图标

- 🇬🇧 - 输入英语
- 🇪🇺 - 输入支持的欧洲语言
- 🇨🇳 - 输入简体中文
- 🇷🇺 - 输入俄语
- 🇸🇦/ABC - 切换选择符号、标点符号、字母或数字
- 🇦🇪 - 在大写字母和小写字母之间切换
- 📏 - 输入空格
- 👉 - 输入换行符

© 2009 Samsung Electronics Co., Ltd. All rights reserved.

Create an event reminder



- Note**
- Charge the built-in battery for about 2 hours before using the PhotoAlbum for the first time. The fully charged built-in battery lets you operate the PhotoAlbum for up to 1 hour.
- Battery level 0%~5%
 - Battery level 5%~20%
 - Battery level 20%~40%
 - Battery level 40%~60%
 - Battery level 60%~80%
 - Battery level 80%~100%
 - PhotoAlbum in charging
 - PhotoAlbum in dock, AC-powered, not charging
- Connect the DC plug of the supplied power cord to the DC jack of the supplied charging dock.
 - Feed the cord through the cord channel.
 - Connect the AC plug of the power cord to a power supply socket.
 - Connect the PhotoAlbum to the charging dock.
 - Press **○** to turn on the PhotoAlbum.
 - Select a language or set time and date if applicable.
 - Follow the on screen instructions to:
 - Play media
 - Select or set clock/calendar
 - Create or view event reminders
 - Browse media
 - Adjust settings

通过存储设备传输/播放媒体

- 注意**
- 在媒体传输期间, 请勿断开存储设备与数码相机的连接。
- 支持的媒体类型:
- 照片 (JPEG)
- 支持的存储设备:
- SD/SDHC/MMC/MMC PlusxD/MS/MS Pro
- 将存储设备插入数码相机。
 - 将显示选项菜单。
 - 选择选项, 然后轻击 **OK**。
 - 按照屏幕上的说明执行以下操作:
 - 在存储设备上播放媒体
 - 在存储设备上浏览媒体
 - 将存储设备上的媒体复制到数码相机

查看已创建的事件提醒



- 在主屏幕中, 选择 **[事件提醒]**, 然后轻击 **OK**。
- 选择 **[查看事件提醒]**, 然后轻击 **OK**。
- 选择一个事件提醒, 然后轻击 **OK**。
 - 事件提醒将显示。
 - 轻击 **MENU**, 然后选择以下选项之一:
 - [重新排定]**: 重新排定事件提醒
 - [删除]**: 删除事件提醒
 - 要返回查看其他事件提醒, 请选择 **[完成]**, 然后轻击 **OK**。

简体中文

1 注意事项

安全

安全注意事项与维护

- 切勿用硬物接触、推按、摩擦或敲击屏幕, 否则可能造成永久性的损坏。
 - 若打算长期不用本产品, 请拔下电源插头。
 - 清洁屏幕之前, 请关闭电源并拔下电源线。仅用柔软的湿布清洁屏幕。切勿使用酒精、化学药品或清洁剂等刺激性清洁剂产品。
 - 切勿将本产品放置在靠近明火或其它热源的地方, 包括阳光直射处。
 - 切勿让本产品与雨或水接触。切勿将液体容器 (如花瓶) 置于产品旁边。
 - 切勿让本产品跌落。跌落产品会造成损坏。
 - 多数仅从不含病毒或有毒软件的可靠来源安装和使用服务或软件。
 - 根据设计, 本产品只能在室内使用。
 - 只能对本产品使用随附的电源适配器。
- 将数码相机用便携软袋存放之前, 请先关闭数码相机电源。

公告



本产品符合指令 2006/65/EC (低电压)、2004/108/EC (EMC) 的基本要求及其它相关规定。

尊重版权



进行受版权保护材料 (包括计算机程序、文件、广播和录音) 的未授权复制可能会侵犯版权并构成犯罪。不得将此设备用于这些目的。

回收



启动



注

- 在首次使用数码相机时, 先为内置电池充电约 2 小时。完全充电的内置电池允许您操作数码相机长达 1 小时。

- ☐ 电池电量 0%~5%
- ☐ 电池电量 5%~20%
- ☐ 电池电量 20%~40%
- ☐ 电池电量 40%~60%
- ☐ 电池电量 60%~80%
- ☐ 电池电量 80%~100%
- 🔌 数码相机正在充电
- 🔌 底座式数码相机、交流电供电、非充电

- 将随附电源线的直流插头连接到随附充电座的 DC 插孔。
- 将电源线从线槽穿过。
- 将电源线的交流插头连接到电源插座。
- 将数码相机连接到充电座。
- 按 **○** 启动数码相机。
 - 选择语言并在必要时设置时间和日期。
- 按照屏幕上的说明执行以下操作:
 - 播放媒体
 - 选择或设置时/分/日/月
 - 创建或查看事件提醒
 - 浏览媒体内容
 - 调整设置

本产品采用可回收利用的高性能材料和组件制造而成。如果产品上贴有带箭头的轮式垃圾桶符号, 则表示该产品符合欧盟指令 2002/96/EC:



切勿将本产品与其它生活垃圾一起处理。请自行了解当地关于分类收集电子和电气产品的规定。正确弃置旧产品有助于避免对环境及人类健康造成潜在的负面影响。本产品包含欧盟指令 2006/66/EC 涉及的内置可充电电池, 该电池不可与普通生活垃圾一起处理。

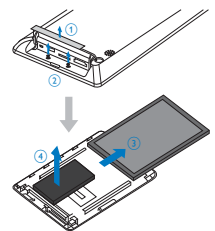


为保护本产品的功能和安全, 请将本产品送到官方收集点或服务中心, 由专业人员移除或替换电池。请自行了解当地关于分类收集电池的规定。正确弃置电池有助于避免对环境及人类健康造成潜在的负面影响。

注意

- 如果所更换的电池型号不正确, 则存在爆炸危险。
- 请按照产品说明弃置废旧电池。
- 切勿拆卸内置电池 (弃置产品时除外)。

始终要让专业人员来拆卸产品中的内置电池。



创建事件提醒



- 在主屏幕中, 选择 **[事件提醒]**, 然后轻击 **OK**。
- 选择 **[创建事件提醒]**, 然后轻击 **OK**。
- 轻击 **◀** 选择事件提醒的模板, 然后轻击 **OK**。
 - 更改事件提醒的图像。
 - 编辑事件提醒的文字。
 - 如果适用, 设置确切的时间和日期。
- 选择 **[完成]**, 然后轻击 **OK**。
- 屏幕将提示您排定事件提醒。
 - 排定留言。
 - [事件名称]**: 输入名称。
 - [重复播放]**: 选择重复播放频率
 - [设置日期]**: 设置日期或星期几
 - [设置时间]**: 设置时间
- 在完成事件提醒之后, 选择 **[完成]**, 然后轻击 **OK**。
- 要返回主屏幕, 请按 **⏪**。

North Europe Information (Nordic Countries)

WARNING:
FÖRSÄKRÅ DIG OM ATT HUVJUDBYRTARE OCH UTTAG ÄR LÄTÅTKOMLIGA, NÅR DU STÄLLER DIN UTRUSTNING PÅ PLÅTS.
Placering/Ventilation
ADVÄRSEL:
SÖRG VEID PLACERINGEN FOR AT NETLEDNINGENS STIK OG STIKKONTAKT ER NEMT TILGÆNGELIGE.
Påkkilsmærketto
VAROITUS:
SIOJITA LAITE SITEN, ETTÄ VERKKÖJOHTO VOIDAAN TARVITTAESSA HELPOSTI IRROTTAA PISTORÄSIÄSTÄ.
Pistoräsiön Ventilaatio
ADVÄRSEL:
NÅR DETTE UTSTYRET PLASSERES, MÅ DU PASSE PÅ AT KONTAKTENE FOR STØTTEILFØRSEL ER LETTE Å NÅ.

II 类声明

II 类设备符号:



此符号表示本产品具有双层绝缘系统。

Environmental Information

产品中含有毒有害物质或元素名称及含量
Names and Contents of Toxic or Hazardous Substances or Elements

部件名称 Name of the Parts	有毒有害物质或元素 Hazardous/Toxic Substance					
	铅 (Pb, Lead)	汞 (Hg, Mercury)	镉 (Cd, Cadmium)	六价铬 (Chromium 6v)	多氯联苯 (PCB)	多氯二噁英 (PBDE)
Housing 外壳	○	○	○	○	○	○
LCD Panel 液晶面板	X	X	○	○	○	○
PWBs 电路板组件	X	○	○	○	○	○
Accessories (Remote control & cables) 附件 (遥控器、电源线、连接线)	X	○	○	○	○	○

○: 表示该有毒有害物质在该部件所有均质材料中的含量符合SJ/T11363-2006标准规定的限值要求以下。
○: Indicates that this toxic or hazardous substance contained in all of the homogeneous materials for this part is below the limit requirement in SJ/T11363-2006.

X: 表示该有毒有害物质至少在该部件的某一均质材料中的含量超出SJ/T11363-2006标准规定的限值要求。
X: Indicates that this toxic or hazardous substance contained in at least one of the homogeneous materials used for this part is above the limit requirement in SJ/T11363-2006.

10
环保使用期限 Environmental Protection Use Period
This logo refers to the period (10 years) during which the toxic or hazardous substances or elements contained in electronic information products will not leak or mutate so that the use of these [substances or elements] will not result in any severe environmental pollution, any bodily injury or damage to any assets.