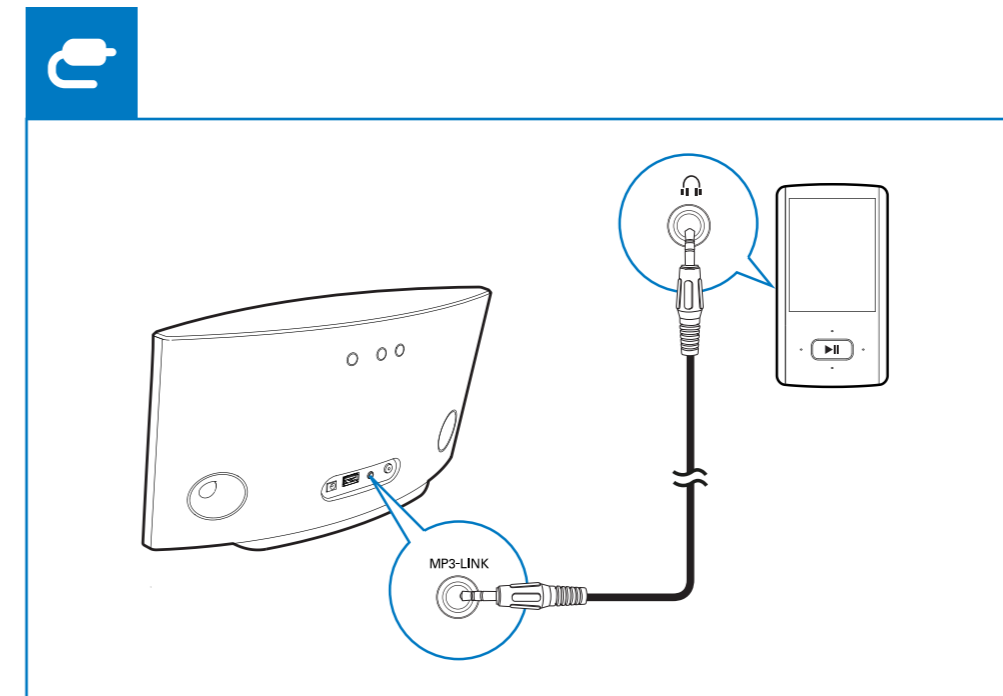
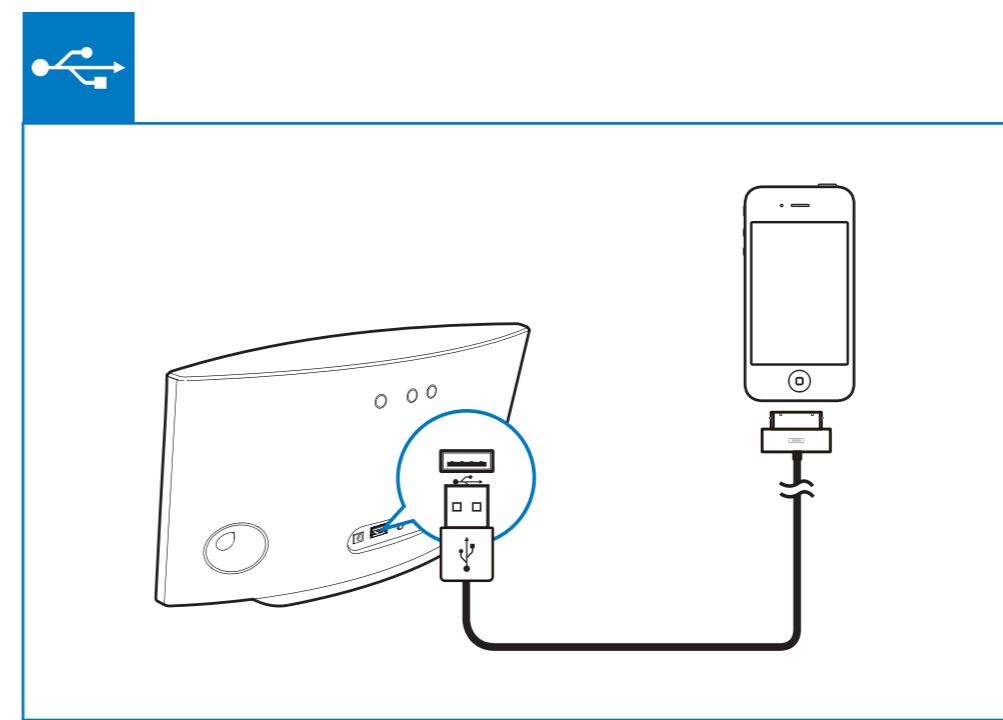
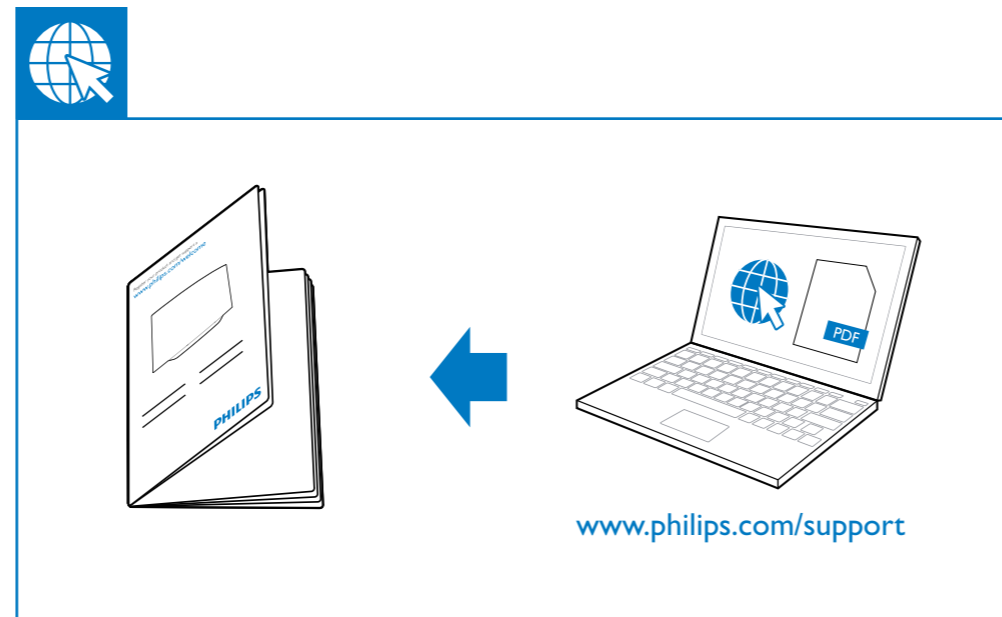
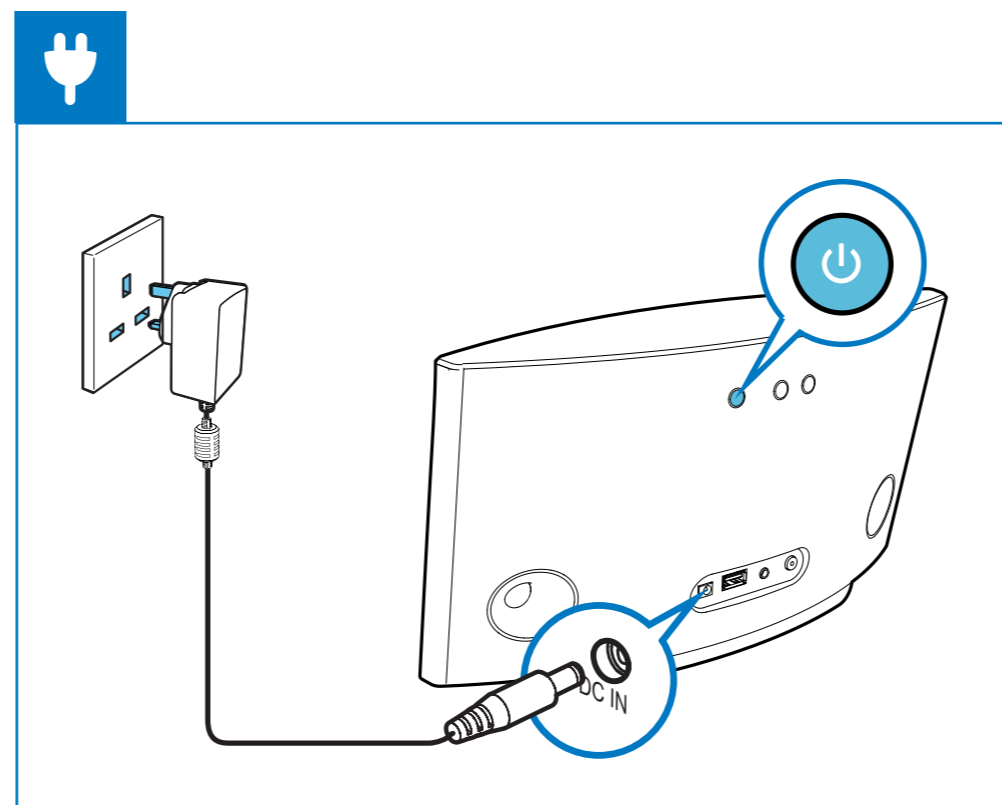
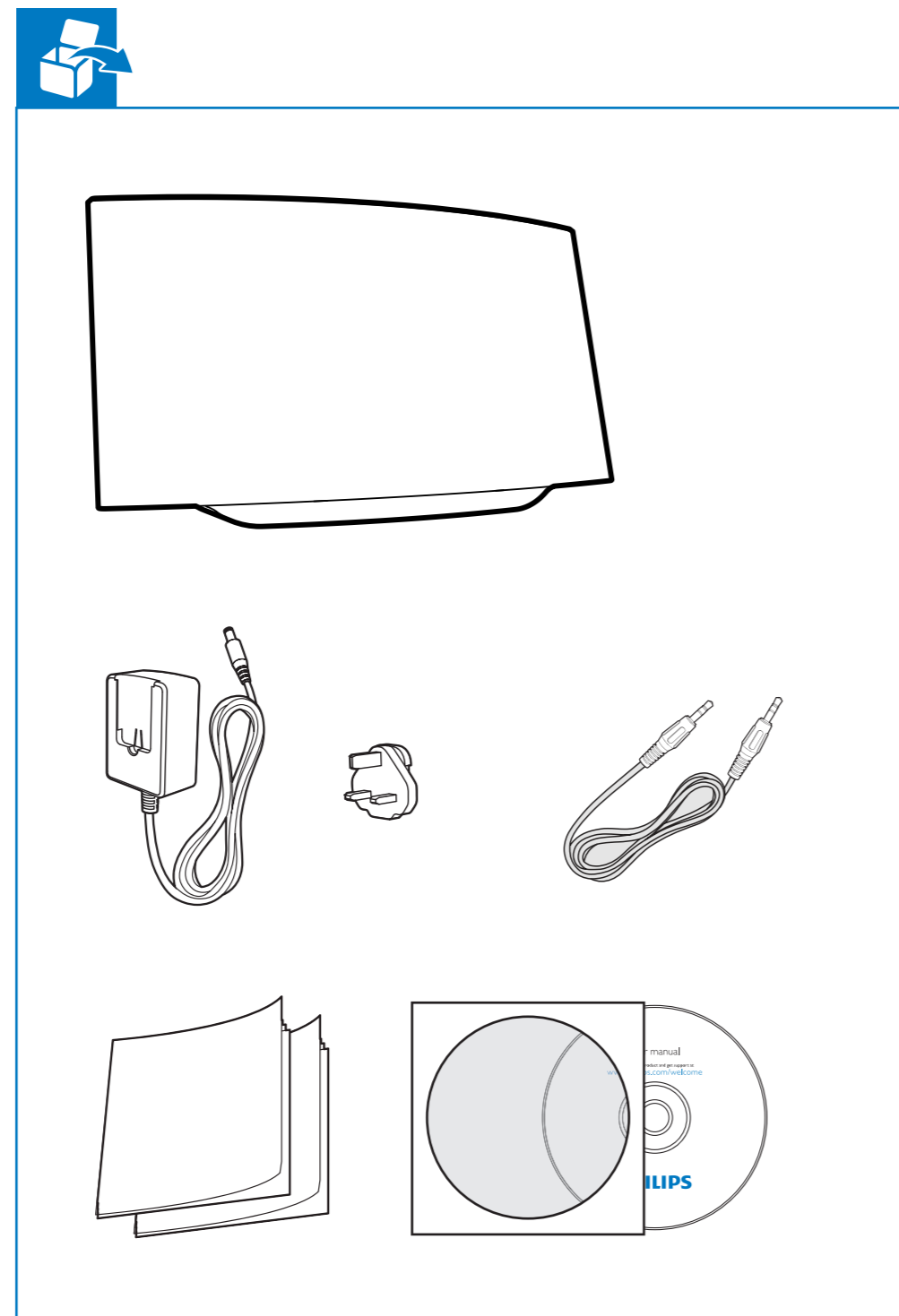


Quick start guide

Always there to help you

Register your product for further support at www.philips.com/welcome

AD6000W



CLASS II apparatus with double insulation, and no protective earth provided.

Note

- The type plate is located on the bottom of the apparatus.

Product information

Note

- Product information is subject to change without prior notice.

Specifications

Amplifier	
Rated Output Power	2 X 5 W RMS
Frequency Response	63 Hz - 18 kHz, ±3 dB
Signal to Noise Ratio	> 90 dB
MP3 Link	600 mV RMS 20 kohm

Speakers	
Speaker Impedance	8 ohm
Speaker Driver	66 mm full range
Sensitivity	82 dB/m/W

Wireless	
Wireless standard	802.11b/g
Wireless security	WEP (64 or 128 bit), WPA/WPA2 (8-63 characters)
Frequency range	2412 - 2462 MHz (CH1-CH11) (for /79, /37, /55, /97) 2412 - 2472 MHz (CH1-CH13) (for /12, /10, /05)
PBC (one button push)	Yes

General information	
AC power	Input: 100 - 240V~, 50/60 Hz 1A/1.2 A Output: 12 V = 3.0 A
Operation Power Consumption	25 W
Power Consumption in Standby Mode	< 0.5 W
Dimensions	
- Main Unit (L x W x H)	298 x 98 x 168 mm
Weight	
- With Packing	2.02 kg
- Main Unit	1.36 kg

EN

Important

Safety

Information for Europe:

Know these safety symbols



The 'exclamation mark' calls attention to features for which you should carefully read the supplied literature to prevent operating and maintenance problems.

The 'lightening bolt' symbol indicates uninsulated components within the product that can cause an electric shock.

To reduce the risk of fire or electric shock, do not expose the product to rain or moisture and do not place any objects filled with liquids, such as vases, on the product.

- Read these instructions.
- Keep these instructions.
- Heed all warnings.
- Follow all instructions.
- Do not use this product near water.
- Clean only with dry cloth.
- Do not block any ventilation openings. Install in accordance with the manufacturer's instructions.
- Do not remove the casing of this product.
- Do not expose the product to dripping / splashing water, rain or high humidity.
- Keep this product away from direct sunlight, naked flames or heat.

- Do not install near any heat sources such as radiators, heat registers, stoves, or other electrical equipment (including amplifiers).
- Do not place any other electrical equipment on the product.
- Do not place any sources of danger on the product (e.g. objects containing liquids, burning candles).
- Where the mains plug or an appliance coupler is used as the disconnect device, the disconnect device shall remain readily operable.

Warning

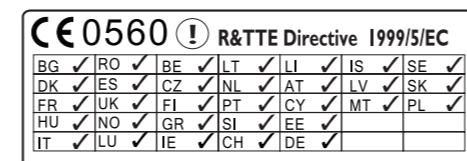
- Never remove the casing of this apparatus.
- Never lubricate any part of this apparatus.
- Never place this apparatus on other electrical equipment.
- Keep this apparatus away from direct sunlight, naked flames or heat.
- Ensure that you always have easy access to the power cord, plug or adaptor to disconnect this apparatus from the power.

Risk of overheating! Never install this apparatus in a confined space. Always leave a space of at least four inches around this apparatus for ventilation. Ensure curtains or other objects never cover the ventilation slots on this apparatus.

Notice



This product complies with the radio interference requirements of the European Community.



The device can be operated in the EU without restrictions indoor, but cannot be operated outdoors in France in the whole of the band until further notice.

This product complies with the requirement of the 1999/5/EC directive.

Modifications

Modifications not authorized by the manufacturer may void user's authority to operate this product.



Your product is designed and manufactured with high quality materials and components, which can be recycled and reused.



When this crossed-out wheeled bin symbol is attached to a product it means that the product is covered by the European Directive 2002/96/EC.

Please inform yourself about the local separate collection system for electrical and electronic products.

Please act according to your local rules and do not dispose of your old products with your normal household waste. Correct disposal of your old product helps to prevent potential negative consequences for the environment and human health.

Environmental information

All unnecessary packaging has been omitted. We have tried to make the packaging easy to separate into three materials: cardboard (box), polystyrene foam (buffer) and polyethylene (bags, protective foam sheet).

Your system consists of materials which can be recycled and reused if disassembled by a specialized company. Please observe the local regulations regarding the disposal of packaging materials, exhausted batteries and old equipment.



"Made for iPod," "Made for iPhone," and "Made for iPad" mean that an electronic accessory has been designed to connect specifically to iPod, iPhone, or iPad, respectively, and has been certified by the developer to meet Apple performance standards. Apple is not responsible for the operation of this device or its compliance with safety and regulatory standards. Please note that the use of this accessory with iPod, iPhone, or iPad may affect wireless performance.

AirPlay, iPod, and iPhone are trademarks of Apple Inc., registered in the U.S. and other countries. iPad is a trademark of Apple Inc.

Class II equipment symbol:

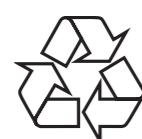


All registered and unregistered trademarks are property of their respective owners.

© 2012 Koninklijke Philips Electronics N.V.

All rights reserved.

AD6000W 05 QSG V1.0





Option 1: Set up through Wi-Fi network login sharing (recommended)

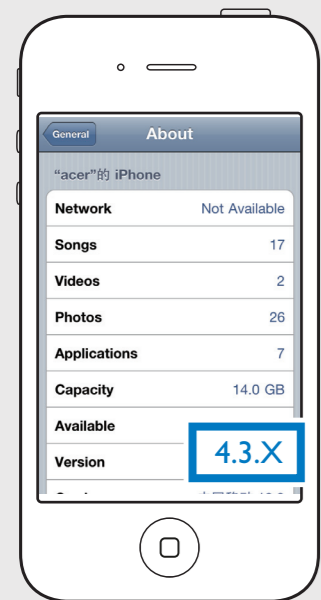
- Connect your iPod touch/iPhone/iPad to your home Wi-Fi network.
- Connect power.
- Wait for 35 seconds until the green light blinks slower.
- Connect your iPod touch/iPhone/iPad to AD6000W through an Apple USB cable (not supplied).
- Press **WIFI SETUP** to initiate Wi-Fi sharing.
- Tap **ALLOW** (allow) to share your Wi-Fi settings with AD6000W.
- Wait for up to 1 minute until the light stops flashing and you hear a confirmation tone.

Start to enjoy your AirPlay

- Open Settings.
- Check that your router is selected.
- Open iPod application.
- Tap **AirPlay** icon.
- Select your device.
- Tap **▶** to play music.

***** If the AirPlay icon does not appear or there is no sound output, try the following ways:
 ① Turn on and off the **Airplane Mode** in Settings.
 ② Restart your iPhone.
 ③ It is recommended to restart your home router.

Check your iOS version



Settings → General → About

Upgrade your iPod touch, iPhone, or iPad to iOS 4.3 or above.
Note: Make sure that Wi-Fi is enabled on your iPod touch, iPhone, or iPad.

Before setup, you are recommended to upgrade your iPod touch/iPhone/iPad to the latest iOS version. For iPhone 4S users, please upgrade to iOS 5.1 or above for optimal performance.

- *** If your Wi-Fi router has a **WPS** button, you can connect the device to the router through **WPS**.
1. Press **WIFI SETUP**, then the light blinks yellow and green alternately.
 2. Press the **WPS** button on the Wi-Fi router.
 3. Wait up to 2 minutes until the light stops blinking and you hear a confirmation tone.



Option 2: Set up through web page configuration

- Connect power.
- Wait for 35 seconds until the green light blinks slower.
- Press and hold **Wi-Fi SETUP** for 5 seconds, then the light alternates between green and yellow.
- Open Settings.
- Tap **Wi-Fi**.
- Wait up to 30 seconds until "Philips Fidelio AirPlay" is detected. Then, tap it.
- Disable the 3G network.
- Open Safari.
- Enter the IP address 192.168.1.1.
- Follow the on-screen instructions to configure the Wi-Fi settings for the device.
- Wait up to 2 minutes until the light stops flashing and you hear a confirmation tone.

***** Remember to turn on the 3G network after successful AirPlay connection.

***** If it takes more than 2 minutes to see the screen of step 9, try to turn on/off the Airplane mode (Settings > Airplane Mode) and start from step 3 again.
 ② If the problem remains, restart your iPhone and start from step 3 again.

***** If the light does not turn solid green after 2 minutes, power off and power on to restart the device, then repeat steps from the beginning.