

PHILIPS

Party Speaker

3000 Series

TAX3208



www.philips.com/welcome



— |

| —

— |

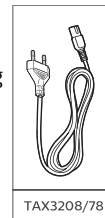
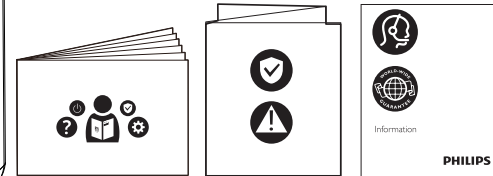
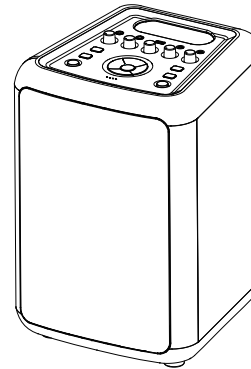
| —



- EN** Before using your Product, read all accompanying safety information
- ES** Antes de usar el producto, lea toda la información de seguridad que lo acompaña
- FR** Avant d'utiliser votre produit, lisez toutes les informations de sécurité qui l'accompagnent.
- PT** Antes de utilizar o produto, leia todas as informações de segurança que o acompanham
- DE** Bevor Sie Ihr Produkt verwenden, lesen Sie alle begleitenden Sicherheitsinformationen

AR قبل استخدام المنتج الخاص بك ، اقرأ جميع معلومات السلامة المصاحبة

- ID** Sebelum menggunakan produk, baca semua informasi petunjuk keamanan
- TH** ก่อนใช้งานผลิตภัณฑ์ โปรดอ่านข้อมูลด้านความปลอดภัยทั้งหมดที่แนบมาด้วย
- TW** 使用產品前，請閱讀隨附的所有安全資訊
- JA** 本製品を使用する前に、付属の安全情報をすべてお読みください。
- KO** 제품을 사용하기 전에 동봉된 모든 안전 정보를 읽어보십시오
- VT** Trước khi sử dụng Sản phẩm của bạn, hãy đọc tất cả thông tin an toàn kèm theo

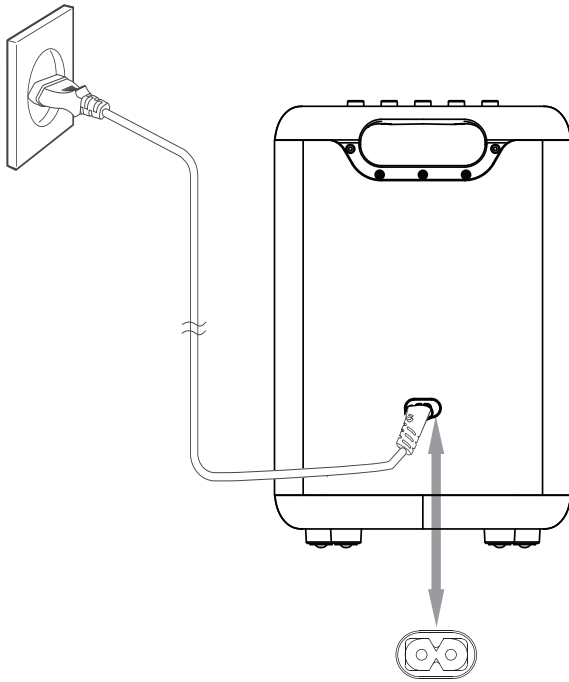


Power cord quantity and plug type vary by regions.

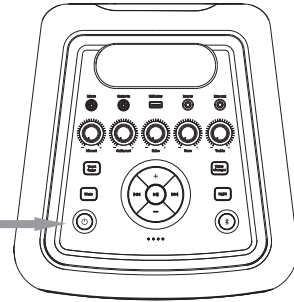
1



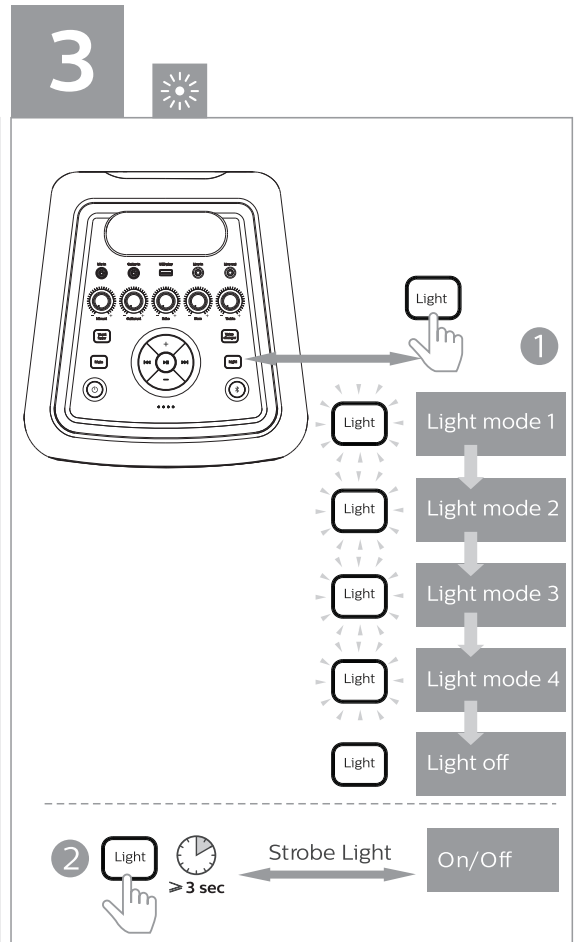
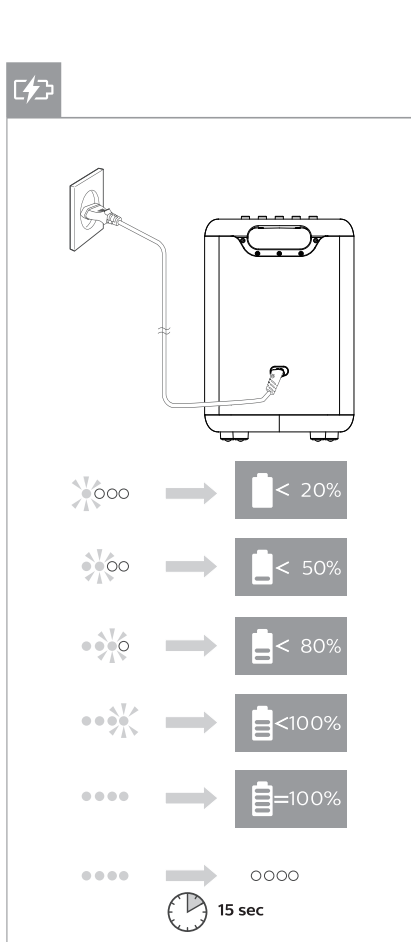
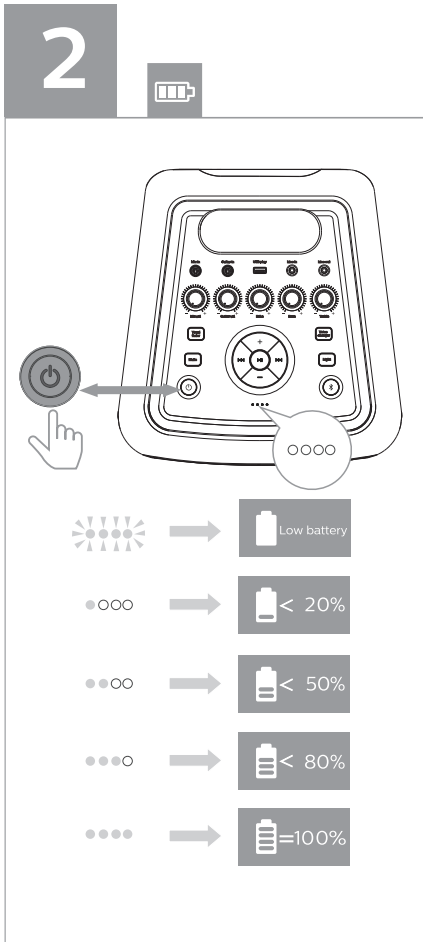
1



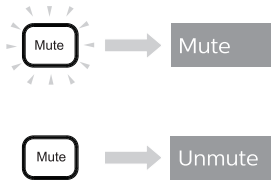
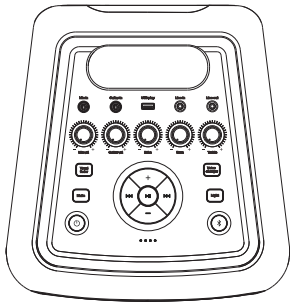
2



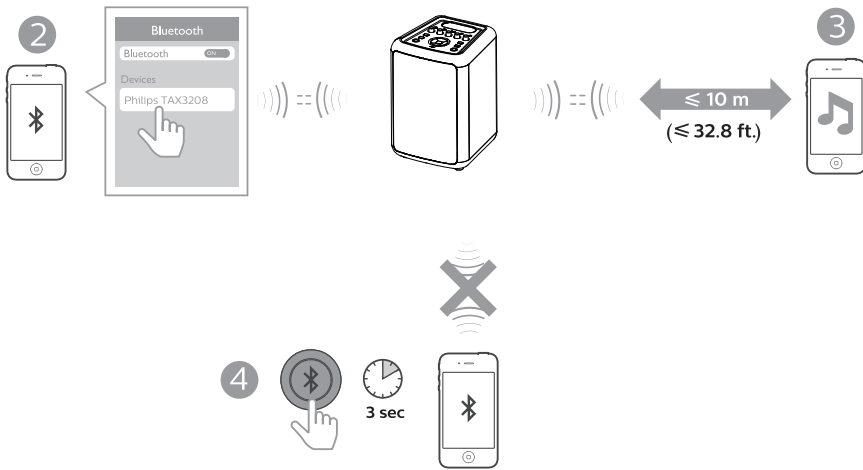
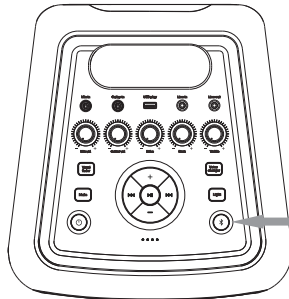
Power cord quantity and plug type vary by regions.



4



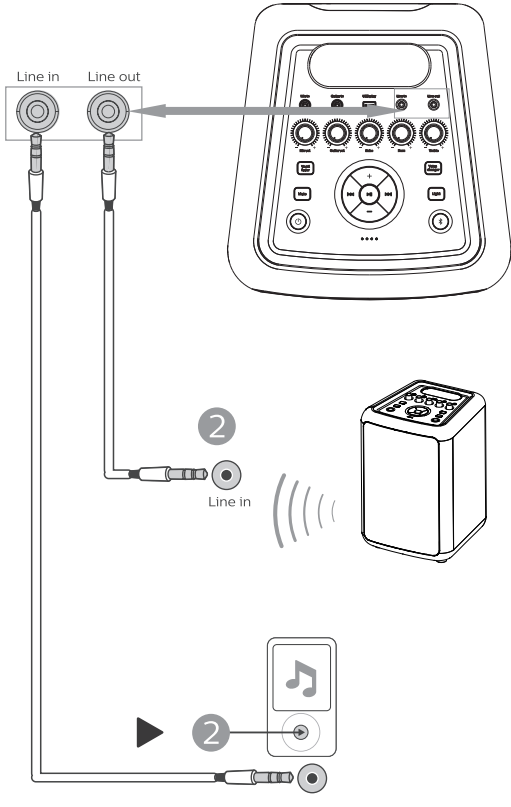
5



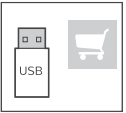
≤ 10 m
(≤ 32.8 ft.)



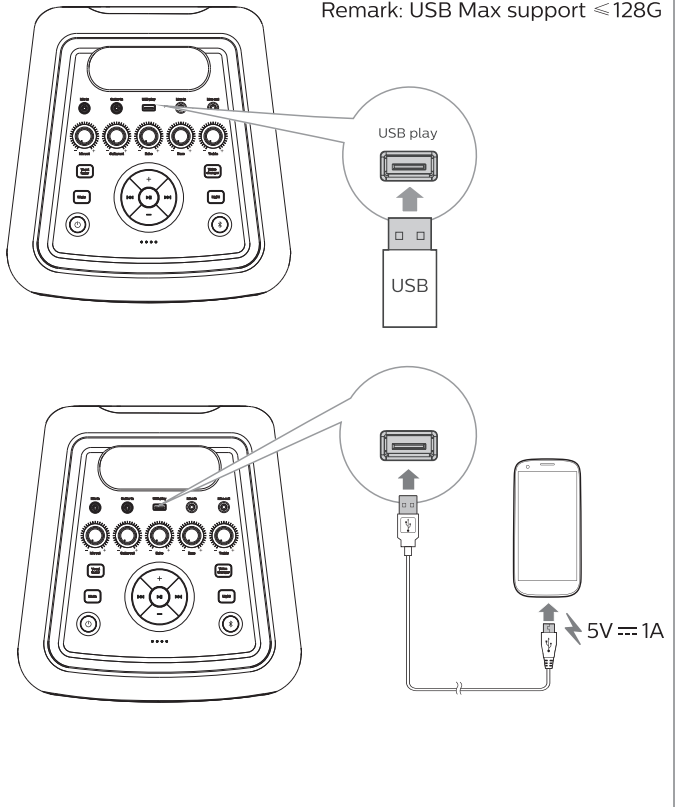
6



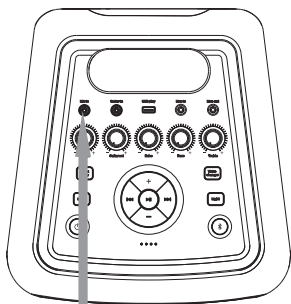
7



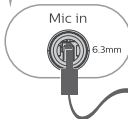
Remark: USB Max support $\leq 128G$



8



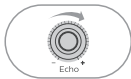
1



2



3



Vocal fader: On



Vocal fader: Off



Voice 1



Voice 2



Voice 3

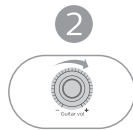
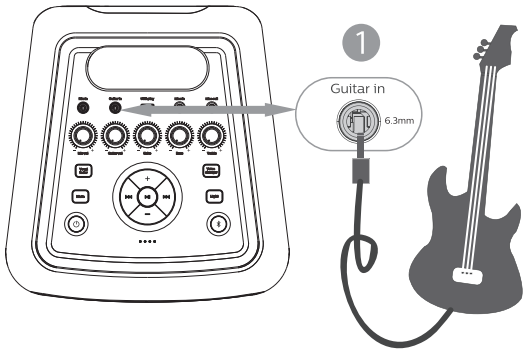


Voice 4



Voice Off

9



i

EN For more information about using this product, visit www.philips.com/support

ES Para obtener más información sobre el uso de este producto, visite www.philips.com/support

FR Pour plus d'informations sur l'utilisation de ce produit, visitez www.philips.com/support

PT Para obter mais informações sobre a utilização deste produto, visite www.philips.com/support.

DE Weitere Informationen zur Verwendung dieses Produkts finden Sie unter www.philips.com/support

لمزيد من المعلومات عن استخدام هذا المنتج، يرجى زيارة الرابط التالي **AR**
www.philips.com/support

ID Untuk informasi lebih lanjut tentang produk ini, kunjungi www.philips.com/support

TH สำหรับข้อมูลเพิ่มเติมเกี่ยวกับการใช้งานผลิตภัณฑ์ โปรดไปที่ www.philips.com/support

TW 欲知有關使用本產品的更多資訊，請瀏覽 www.philips.com/support

JA 本製品の使用方法の詳細については、www.philips.com/support にアクセスしてください。

KO 제품 사용에 대한 자세한 내용은 사이트를 방문하십시오. www.philips.com/support

VT Để biết thêm thông tin về cách sử dụng sản phẩm này, hãy truy cập www.philips.com/support

Bluetooth

The Bluetooth® word mark and logos are registered trademarks owned by Bluetooth SIG, Inc. and any use of such marks by MMD Hong Kong Holding Limited is under license. Other trademarks and trade names are those of their respective owners.



www.philips.com/support

— |

| —

— |

| —

— |

| —

— |

| —



Modelo: PVX930



08791-21-10947

Para maiores informações, consulte a site da ANATEL: www.anatel.gov.br
Este equipamento não tem direito à proteção contra interferência prejudicial
e não pode causar interferência em sistemas devidamente autorizados.
"Este produto contém a placa PVX930 código de homologação
08791-21-10947"

Specifications are subject to change without notice. Please visit
www.philips.com/support for the latest updates and documents.

Philips and the Philips Shield Emblem are registered trademarks of Koninklijke Philips N.V. and are used under license. This product has been manufactured by and is sold under the responsibility of MMD Hong Kong Holding Limited or one of its affiliates, and MMD Hong Kong Holding Limited is the warrantor in relation to this product.

TAX3208_78_QSG_V1.0

