

Always there to help you

Register your product and get support at
www.philips.com/welcome

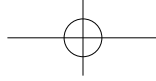


HTL2150
HTL2150T
HTL2150W
HTL2150G
HTL2150S
HTL2150C

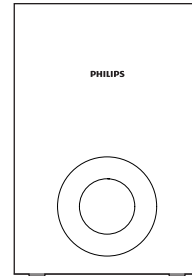


Quick start guide

PHILIPS



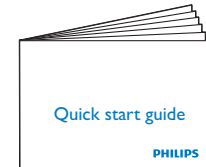
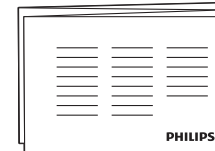
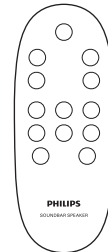
EN Before using your product, read all accompanying safety information



4 X



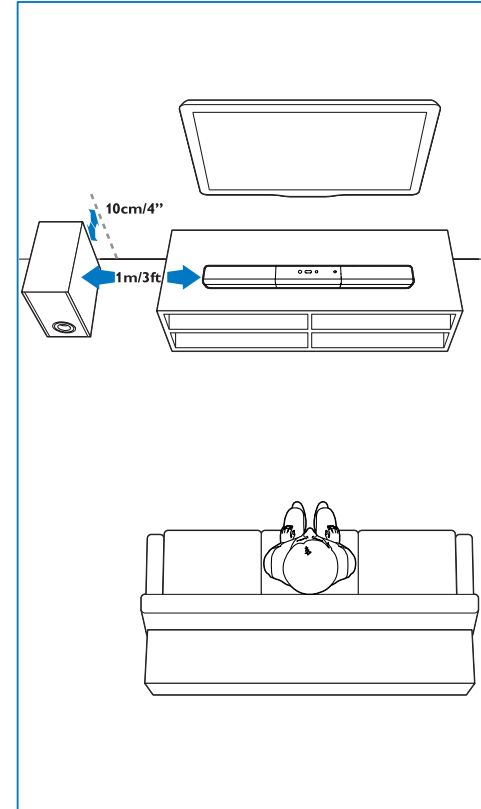
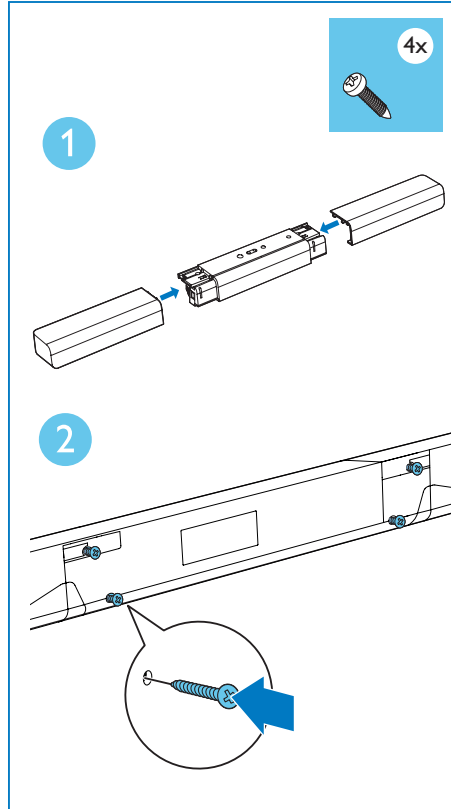
Power Cord





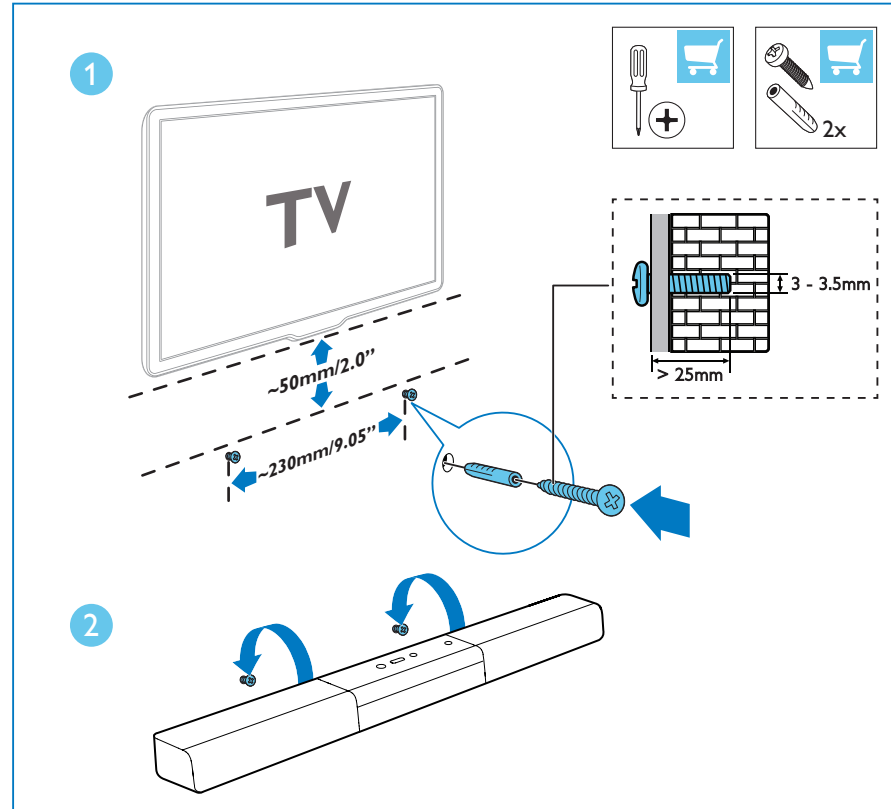
1

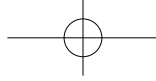
EN Assemble your SoundBar





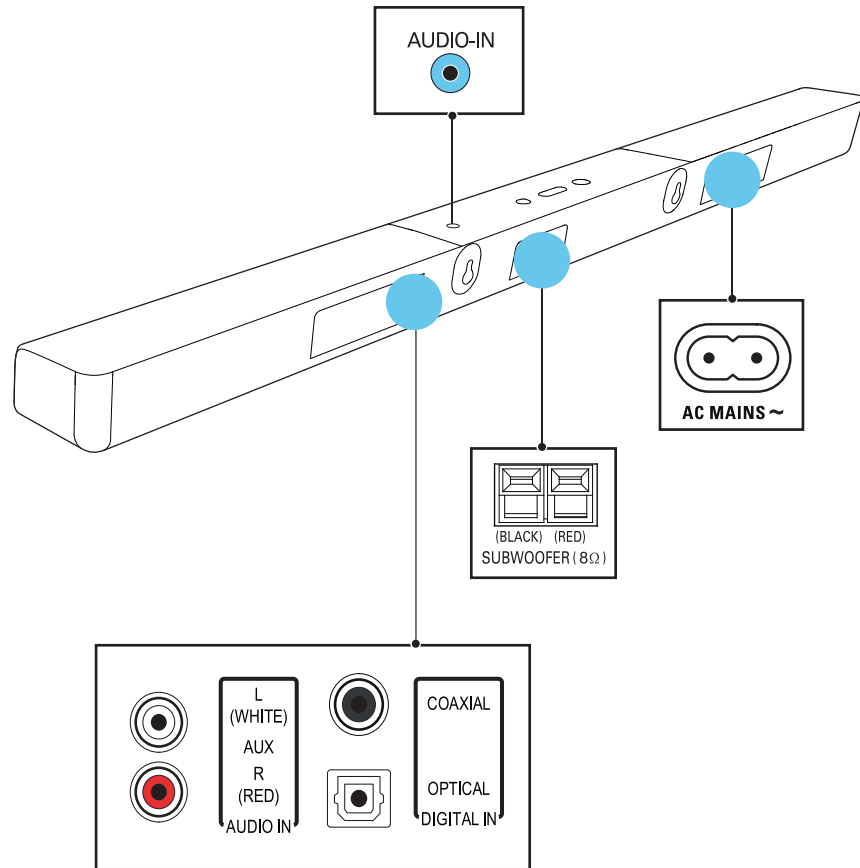
EN Wall mount the SoundBar (optional)





2

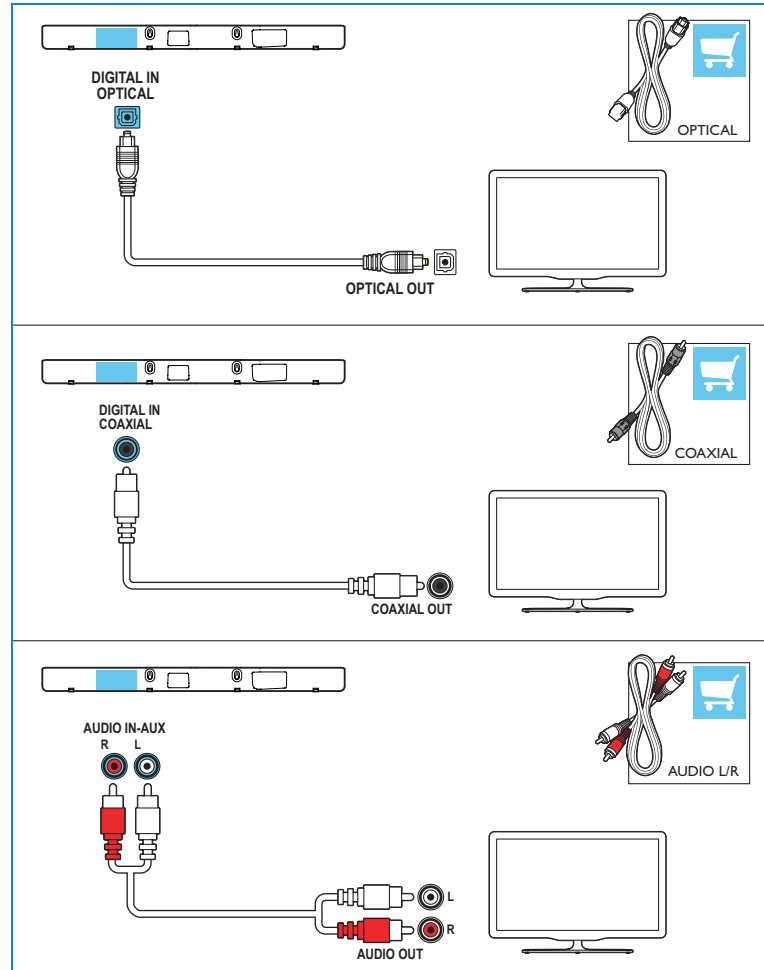
EN Connect the SoundBar





3

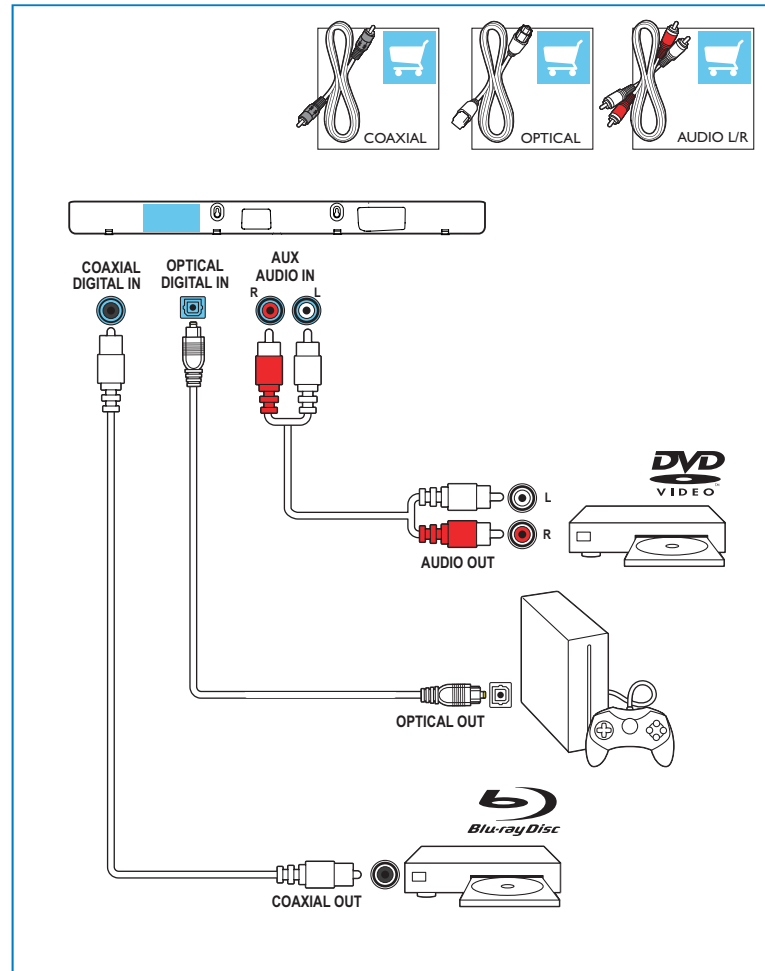
EN Hear audio from TV in one of the following ways (Mute your TV).

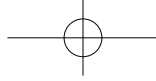




4

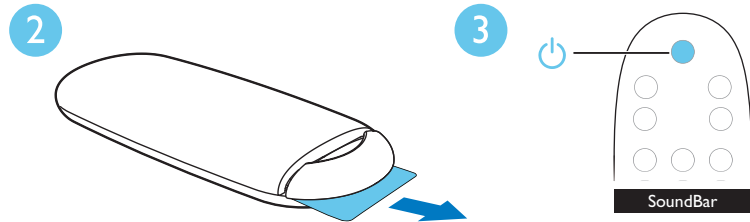
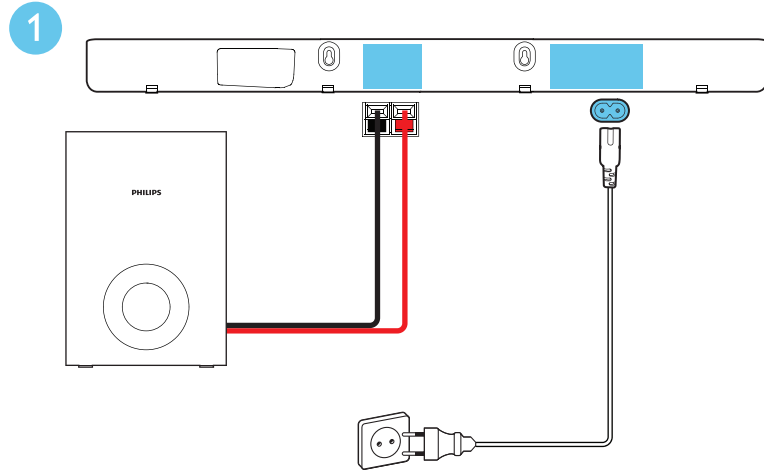
EN Enjoy audio from your devices

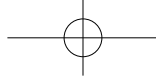




5

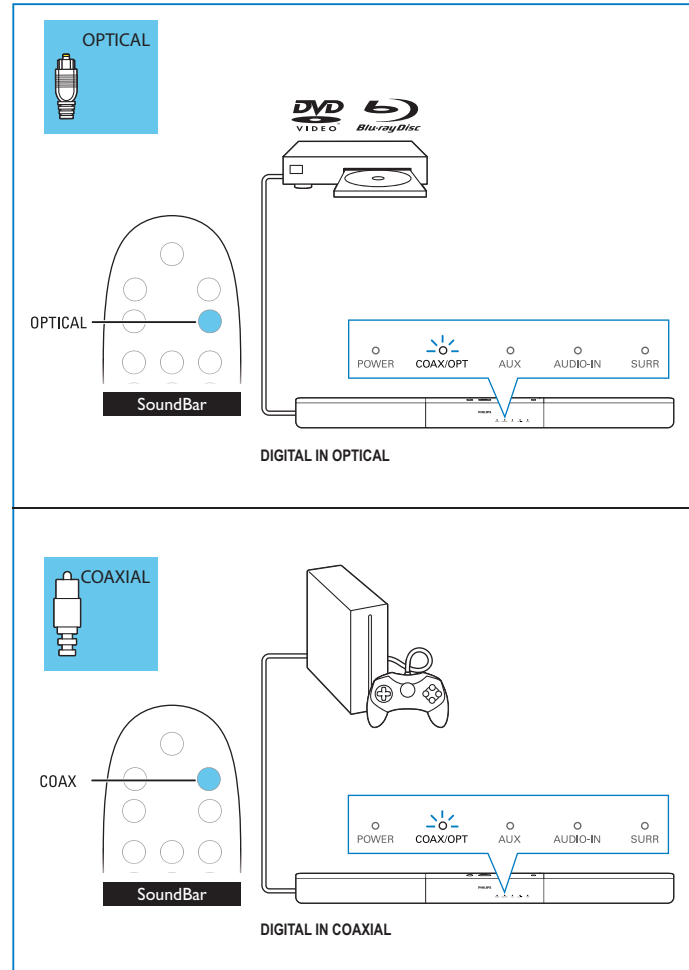
EN Switch on the SoundBar

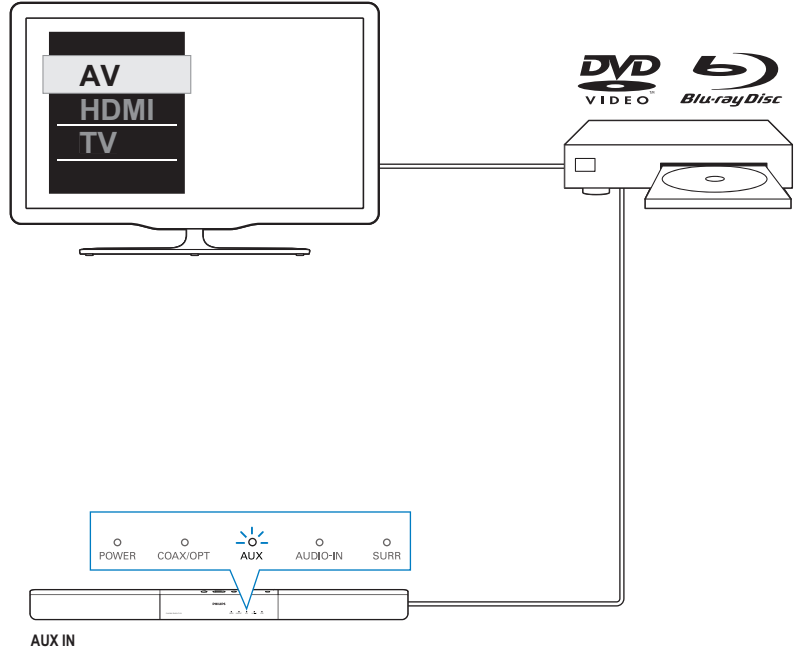
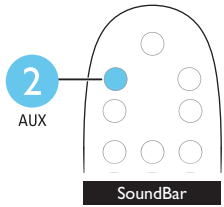
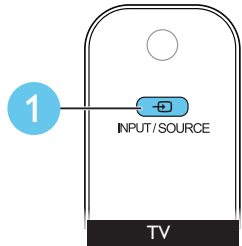
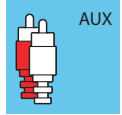
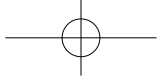




6

EN Select the correct audio source

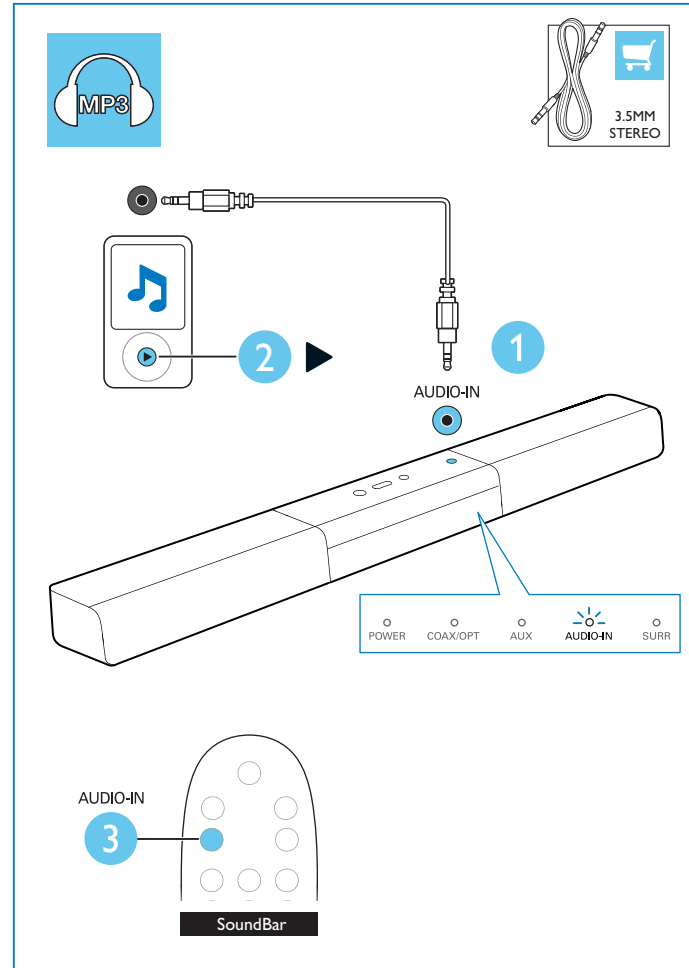


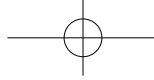




7

EN Play other devices





EN For more information about using this product, visit www.philips.com/support



Manufactured under license from Dolby Laboratories. Dolby and the double-D symbol are trademarks of Dolby Laboratories.



Non-contractual images. / Images non contractuelles. / Außervertragliche Bilder:
 All registered and unregistered trademarks are property of their respective owners.
 Specifications are subject to change without notice
 Trademarks are the property of Koninklijke Philips Electronics N.V. or their respective owners
 2013 © Koninklijke Philips Electronics N.V. All rights reserved
www.philips.com
 HTL2150_79_QSG_V1.0

